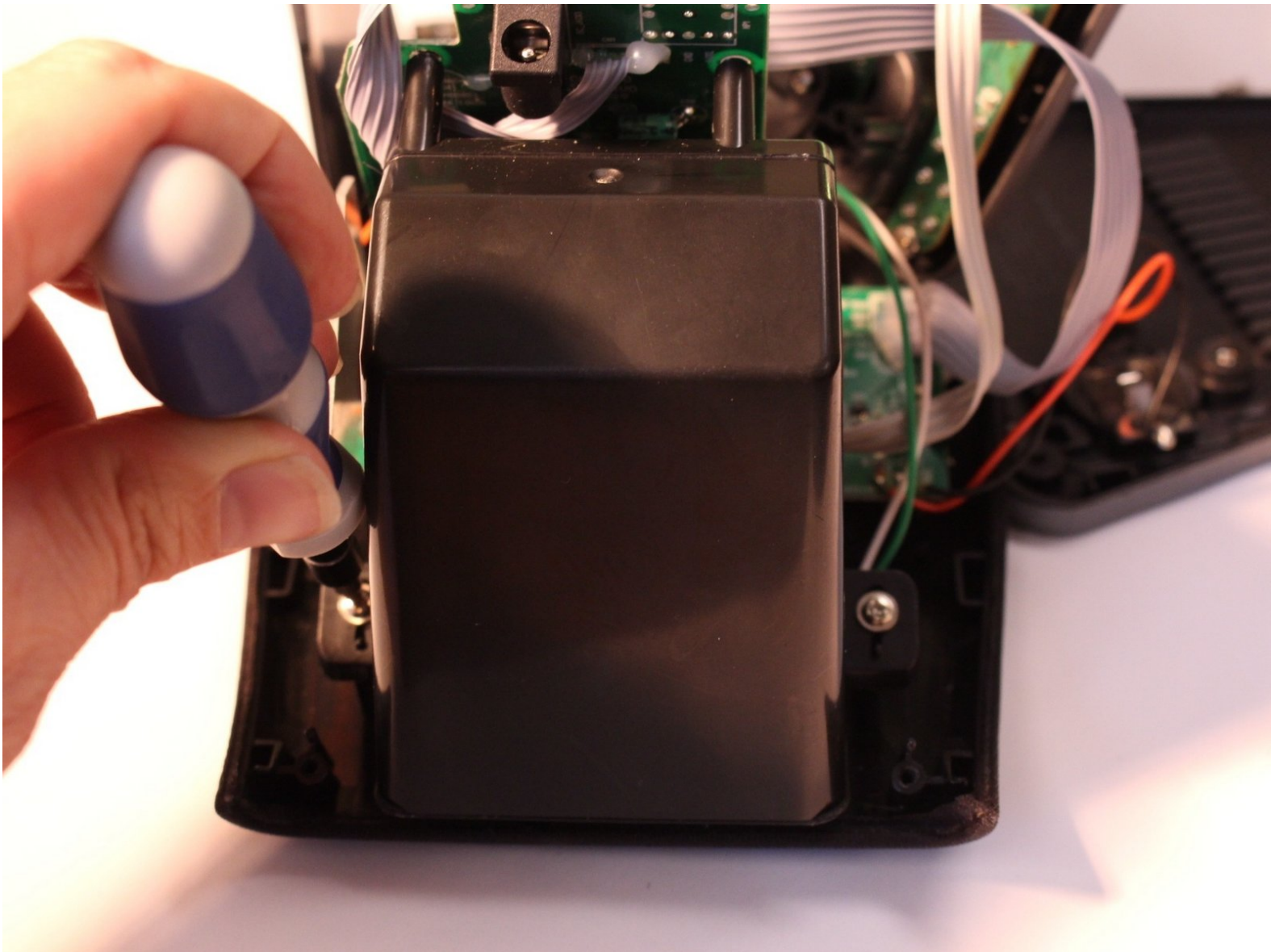




iHome iP21 Speaker Replacement

Replacing the speaker of the iP21 is a quick and easy process to extend the life of your product.

Written By: Brandy





TOOLS:

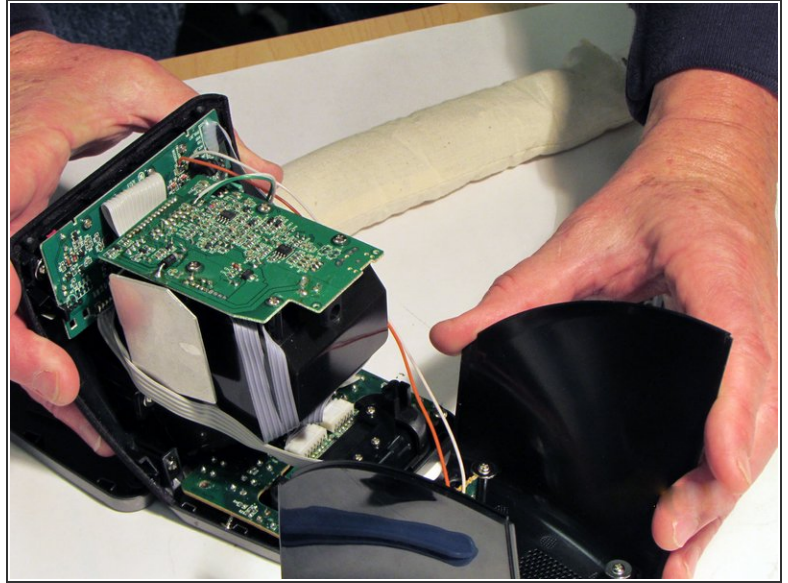
- [Phillips #1 Screwdriver](#) (1)
- [Phillips #2 Screwdriver](#) (1)
- [Spudger](#) (1)

Step 1 — Base



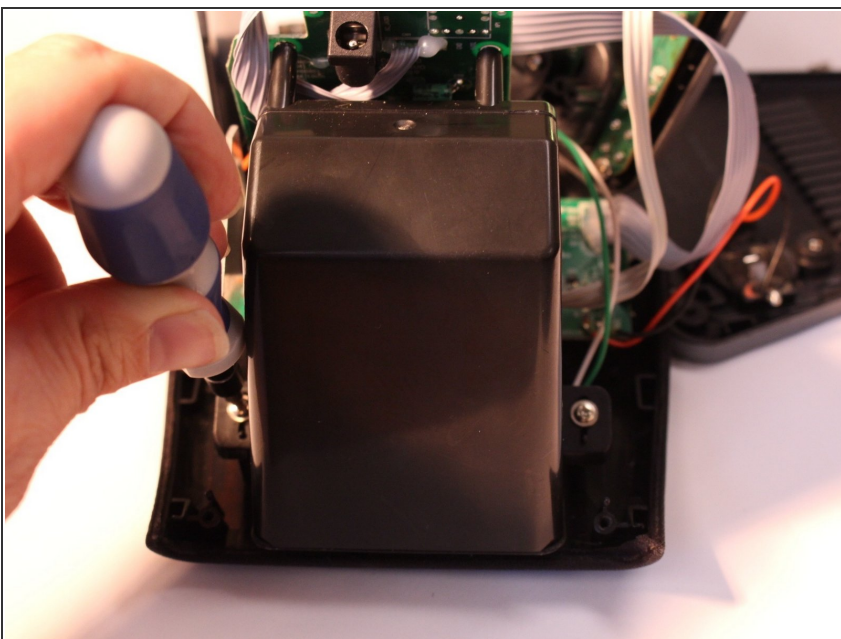
- Pry the four rubber feet from the bottom of the iP21 to expose four 11mm screws.
- Unscrew the four 11mm screws from the base.
- Pry the base loose using the spudger.
- Remove the base by hand.

Step 2 — Housing



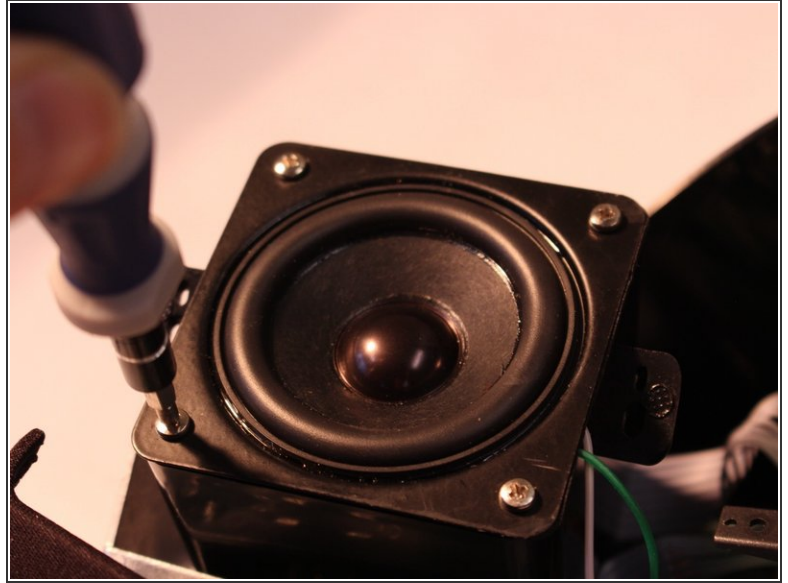
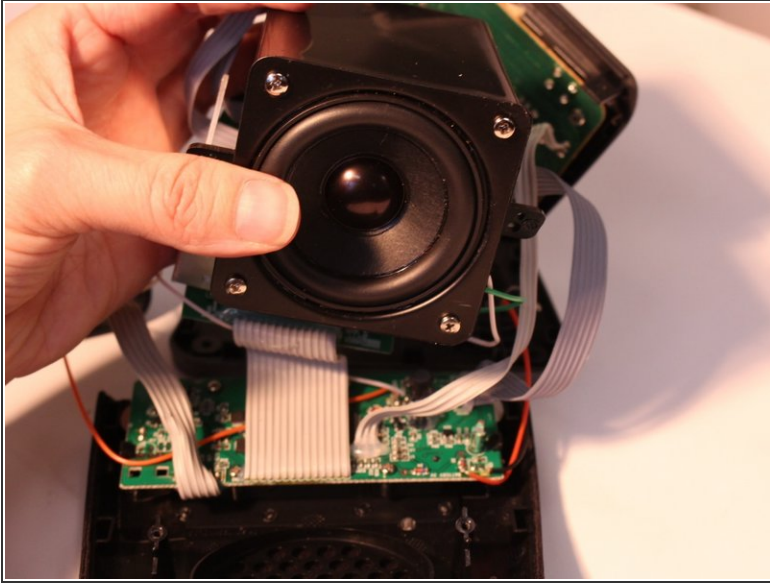
- Remove the two black 6mm screws connecting the main circuit board to the housing top.
- Grasp front housing and back housing firmly.
- Gently pull front housing from the back housing.

Step 3 — Remove Speaker Assembly



- Remove two 9mm screws holding speaker assembly in iP21, using iFixit Phillips #2 bit

Step 4 — Remove speaker from speaker assembly



- Lift speaker assembly
- Remove four 7mm screws to detach speaker from speaker assembly

To reassemble your device, follow these instructions in reverse order.