



# iHome iP41BR Top Buttons Replacement

Replace the top buttons (play/pause, power, alarm etc.) on an iHome iP41BR.

Written By: Paige Reisman



---

## INTRODUCTION

Use this guide to replace the buttons (alarm, hour, minute, power, play/pause, and volume) on the top of the iHome.


---

### TOOLS:

- [Phillips #1 Screwdriver](#) (1)
  - [Phillips #0 Screwdriver](#) (1)
-

## Step 1 — Remove Front Cover



 Unplug your iHome before starting disassembly.

- Unscrew the four 13mm Phillips #1 screws, located in the 4 indented holes on the back of the iHome.

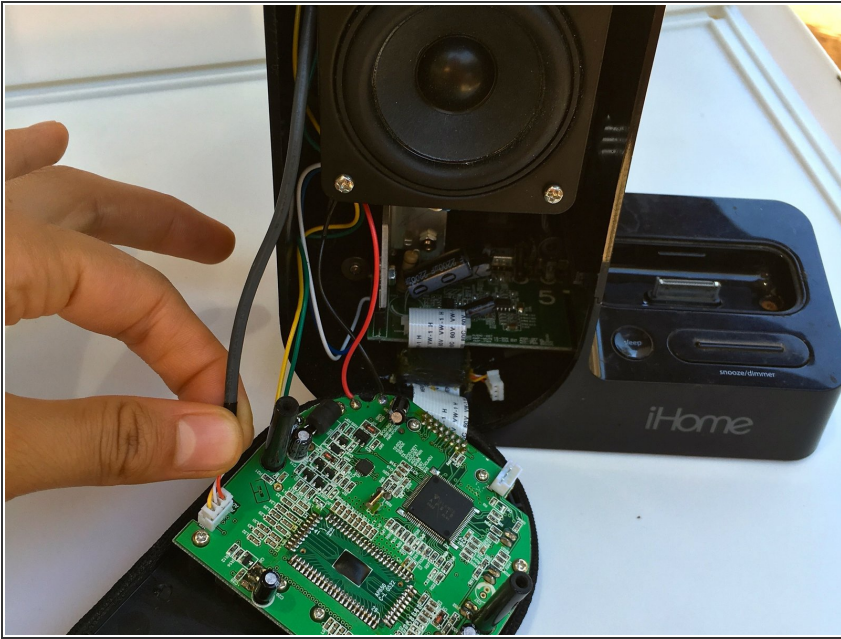
## Step 2



- Pull front cover directly out and away from iHome base.
- Pulling firmly should detach the cable on the bottom right. If not, use the tweezers to firmly pull the cable out of its socket.

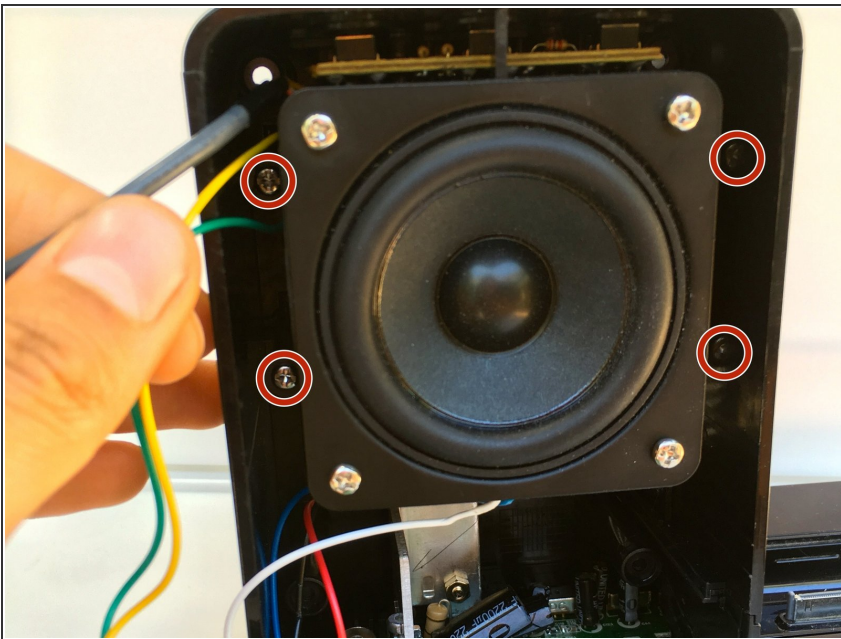


## Step 3



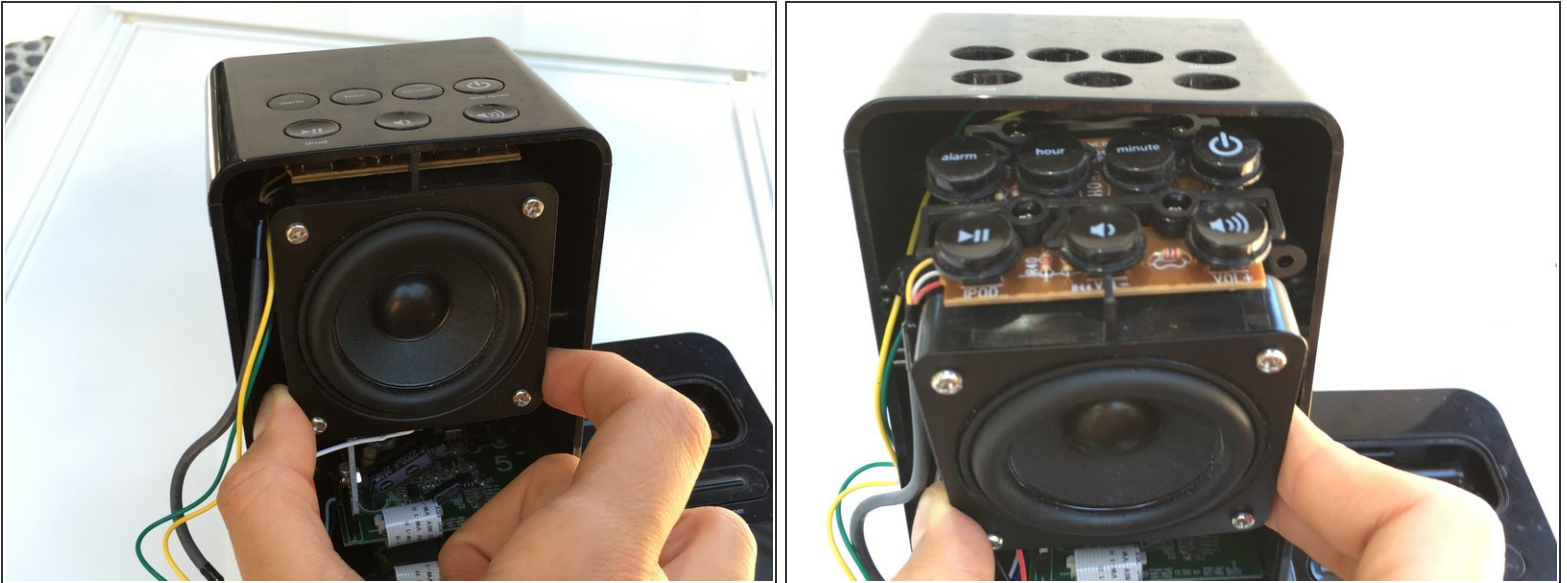
- Lay the front cover face down.
- ⓘ Pull the cover away from the housing gently to ensure no damage is done to the ribbon cable or the soldered connections.
- Pinch the cable on the left and firmly pull it out of its socket.

## Step 4 — Detach Speaker



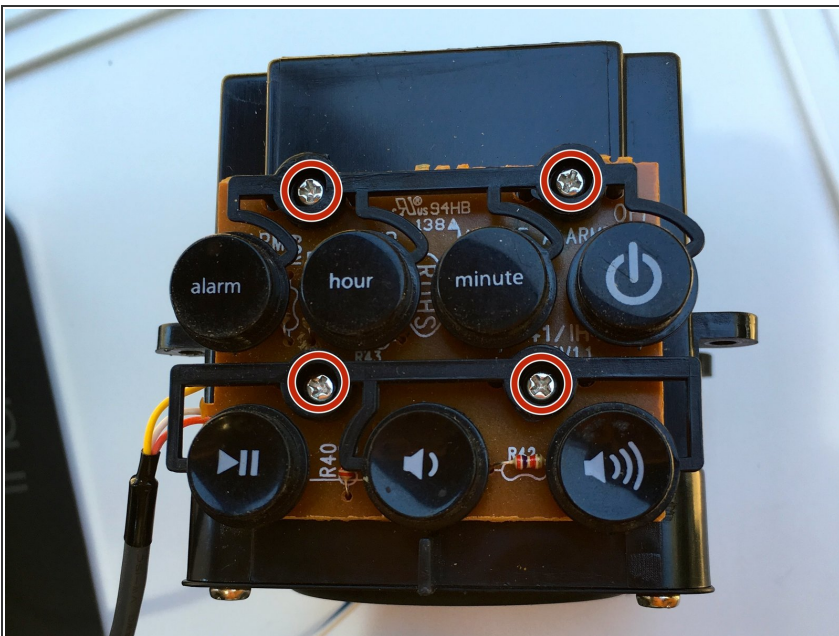
- Remove the four 10mm Phillips #1 screws located on either side of the speaker.

## Step 5



- Pinching the speaker with your thumb and pointer finger, pull it firmly down and out, away from the housing.
- If the speaker is difficult to pull out, push down on the buttons from the top to help loosen it.

## Step 6 — Remove Buttons



- Remove the four 8mm Phillips #0 screws from the top of the speaker.
- Remove the two rows of buttons and replace.

To reassemble your device, follow these instructions in reverse order.