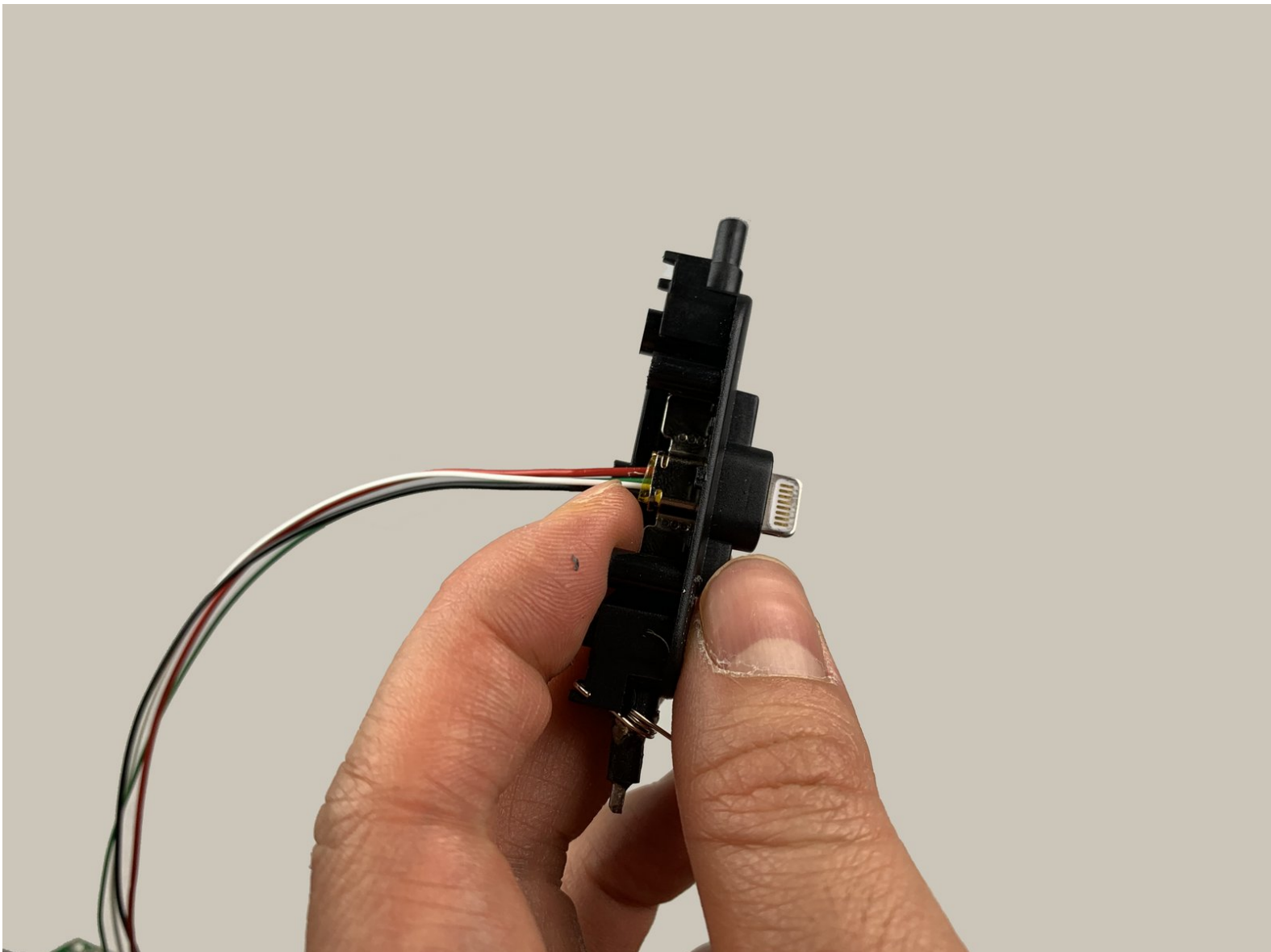




iHome iPL8 Lightning Connector Replacement

How to replace the lightning connector of an iHome iPL8.

Written By: Chen Zhong



INTRODUCTION

This guide instructs you to replace the lightning connector in an iHome iPL8. The process includes using two sizes of screwdrivers.

TOOLS:

- [Phillips #2 Screwdriver](#) (1)
 - [Phillips #1 Screwdriver](#) (1)
-

Step 1 — Battery



- Turn the device over to access the bottom panel.
- Locate the 6mm Phillips #2 screw under the label "unscrew to open door."

Step 2



- Using a Phillips #2 screwdriver, unscrew the captive screw.
- Keep turning until the screw and the door are loose.

Step 3



- Lift and remove the battery access panel.
- ⓘ The captive screw will remain attached to the panel.

Step 4



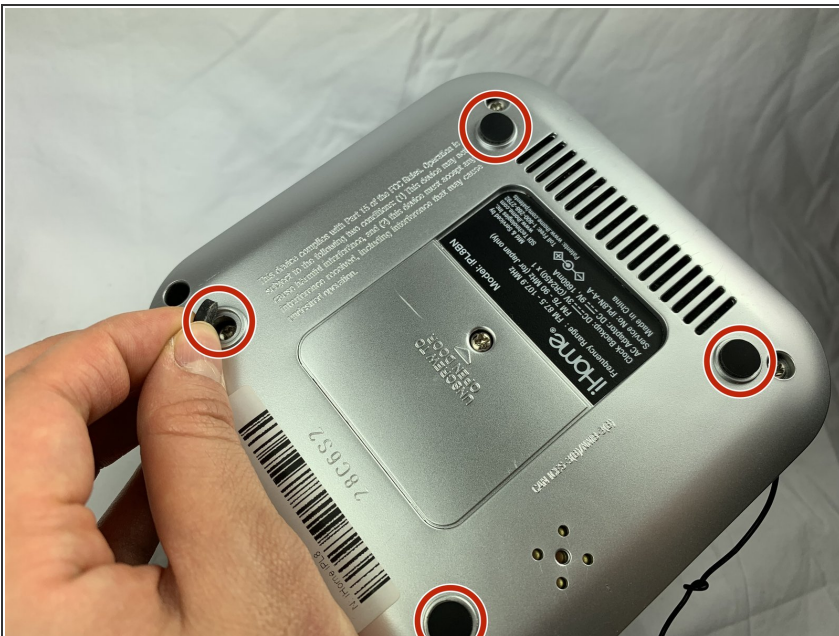
- Gently press on the rim of the 3V battery.
- Remove the 3V battery.

Step 5 — Lightning Connector



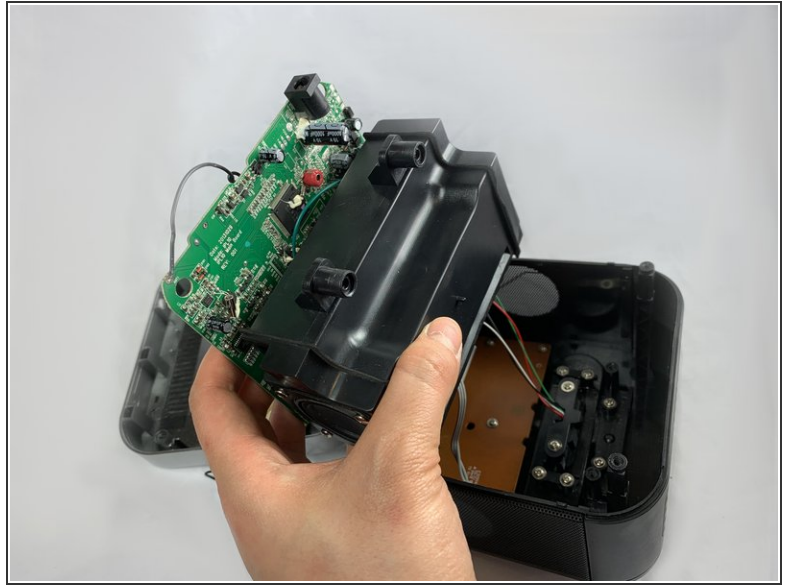
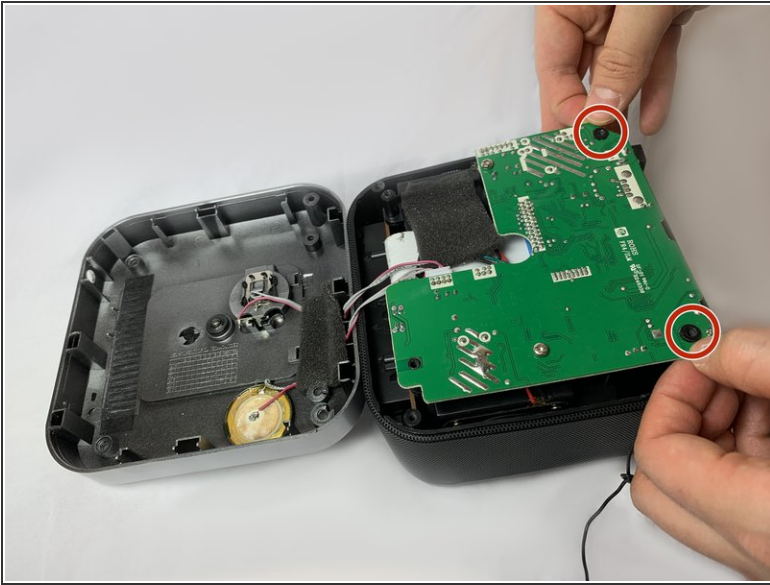
- Keeping your device upside-down, locate the four 6mm Phillips #2 screws near each corner.
- Remove the four 6mm Phillips #2 screws.

Step 6



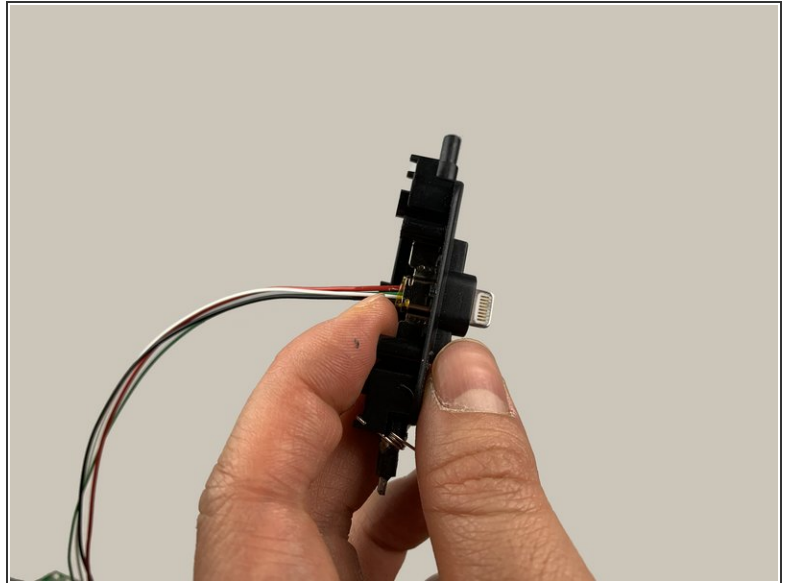
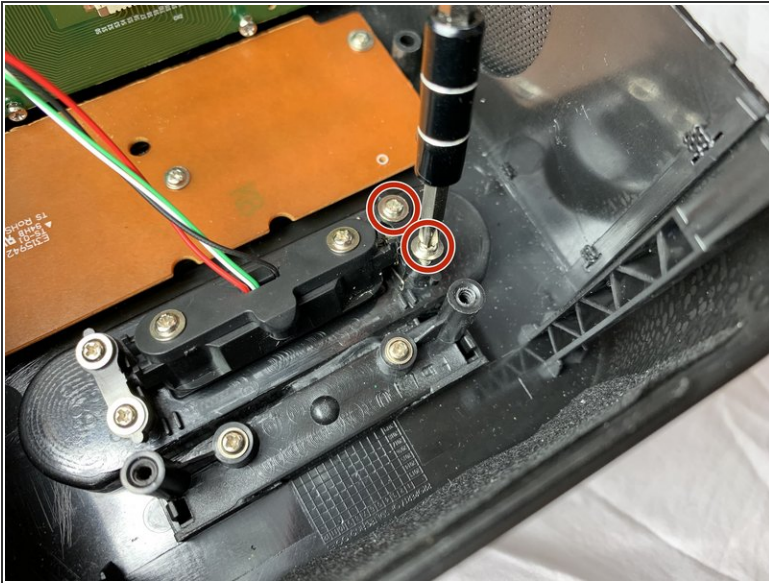
- Remove the four round pads from the bottom of the device.
- ⓘ There are two additional 6mm Phillips #2 screws under the pads.
- Using a Phillips #2 screwdriver, remove the two remaining screws.
- Put your hand on the silver bottom case and gently pull it outward.

Step 7



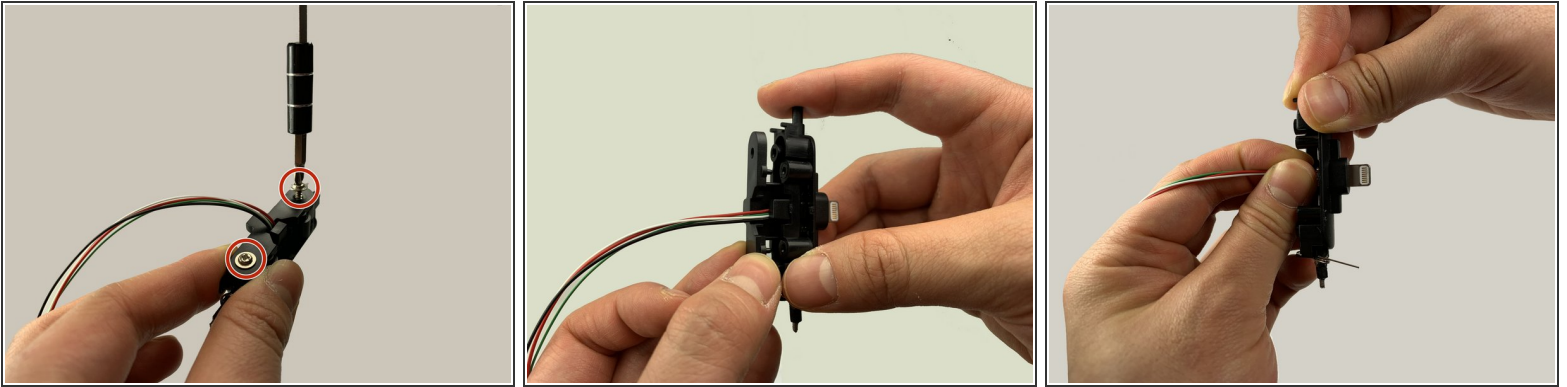
- Locate the green circuit board. This panel is clipped onto two black, circular-shaped columns at two corners.
- Pull out the green circuit board on the two corners.
- The green circuit board is attached to a black box at the bottom. Flip the panel and the black box together to open the device.

Step 8



- Remove the two 2.5 mm Phillips #1 screws securing the lightning dock assembly to the device.
 - Remove the two screws and the black cover.
 - Gently remove the lightning dock assembly.
- ⚠ The lightning dock assembly is connected to wires.

Step 9



- Remove the two 2.5mm screws using a Phillips #1 screwdriver.
- Remove the back cover.
- Use your fingers to reposition the lightning connector.
- ⓘ Make sure ALL of the lightning connector is exposed.

To reassemble your device, follow these instructions in reverse order.