



# iHome iPL8 Screen Replacement

How to replace the screen of an iHome iPL8.

Written By: Chen Zhong



## INTRODUCTION

This guide instructs you to replace the screen in an iHome iPL8. The process includes using two sizes of screwdrivers.

---

### TOOLS:

- [Phillips #2 Screwdriver](#) (1)
  - [Phillips #1 Screwdriver](#) (1)
-

## Step 1 — Battery



- Turn the device over to access the bottom panel.
- Locate the 6mm Phillips #2 screw under the label "unscrew to open door."

## Step 2



- Using a Phillips #2 screwdriver, unscrew the captive screw.
- Keep turning until the screw and the door are loose.

## Step 3



- Lift and remove the battery access panel.
- ⓘ The captive screw will remain attached to the panel.

## Step 4



- Gently press on the rim of the 3V battery.
- Remove the 3V battery.

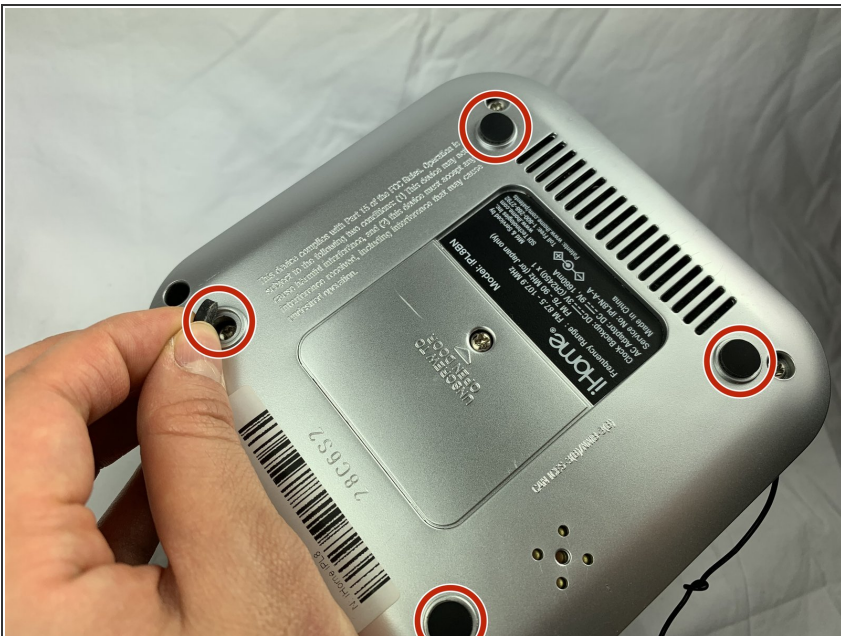


## Step 5 — Lightning Connector



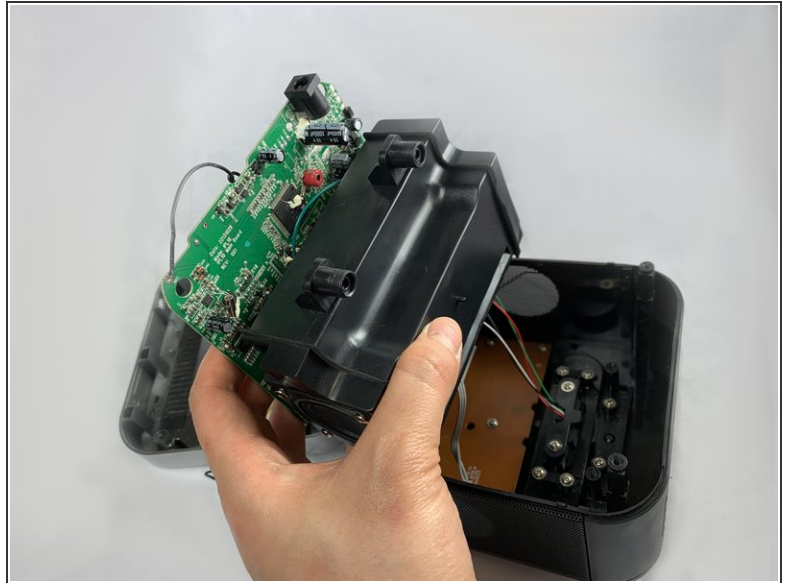
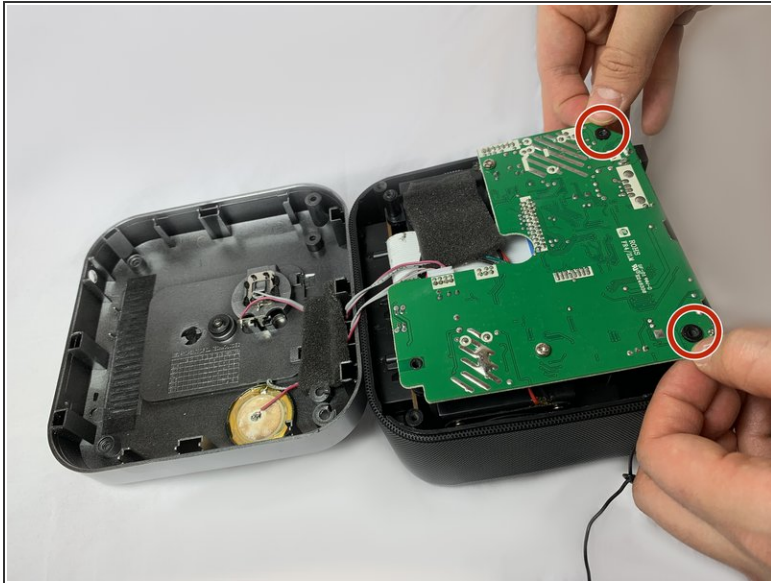
- Keeping your device upside-down, locate the four 6mm Phillips #2 screws near each corner.
- Remove the four 6mm Phillips #2 screws.

## Step 6



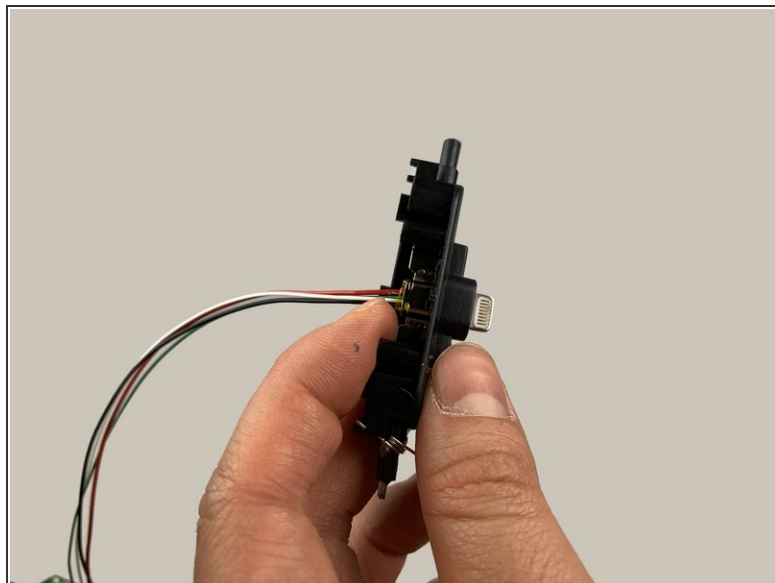
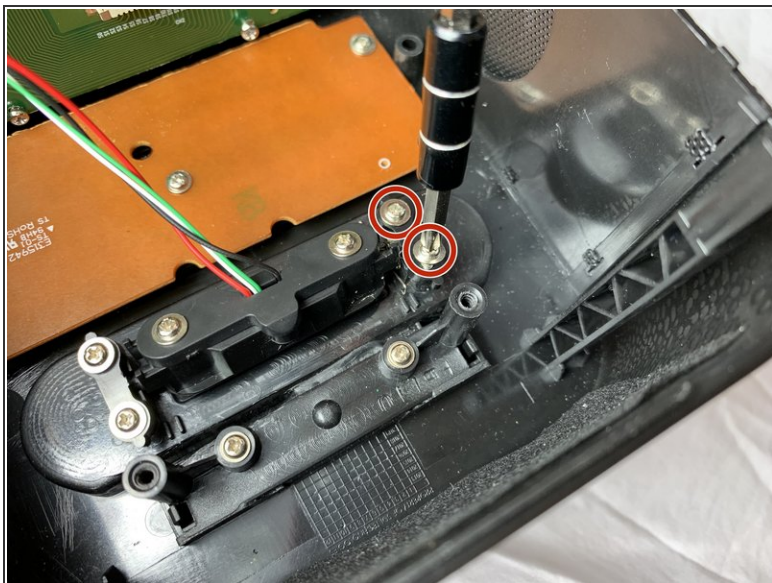
- Remove the four round pads from the bottom of the device.
- ⓘ There are two additional 6mm Phillips #2 screws under the pads.
- Using a Phillips #2 screwdriver, remove the two remaining screws.
- Put your hand on the silver bottom case and gently pull it outward.

## Step 7



- Locate the green circuit board. This panel is clipped onto two black, circular-shaped columns at two corners.
- Pull out the green circuit board on the two corners.
- The green circuit board is attached to a black box at the bottom. Flip the panel and the black box together to open the device.

## Step 8

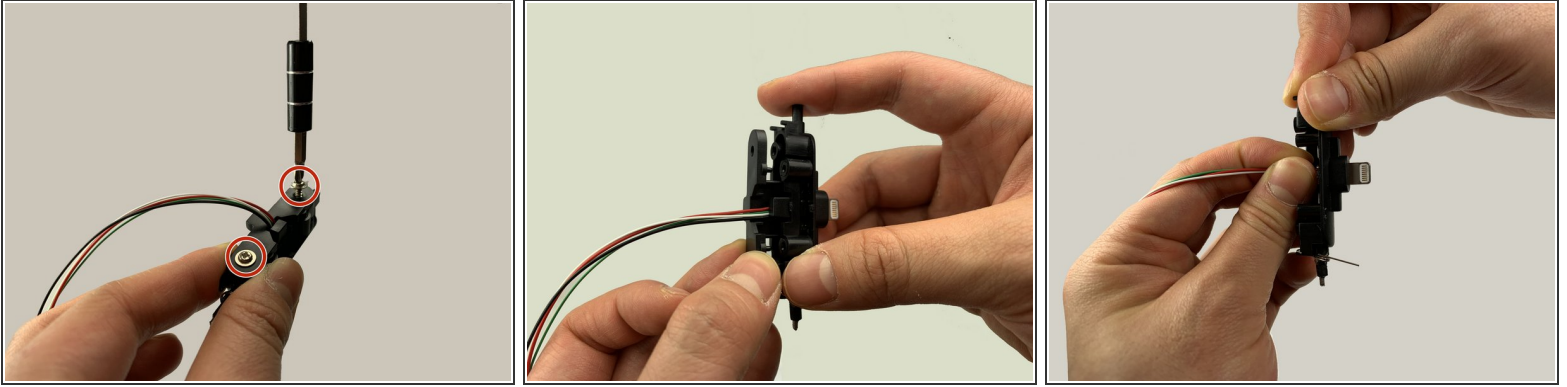


- Remove the two 2.5 mm Phillips #1 screws securing the lightning dock assembly to the device.
- Remove the two screws and the black cover.
- Gently remove the lightning dock assembly.

⚠ The lightning dock assembly is connected to wires.

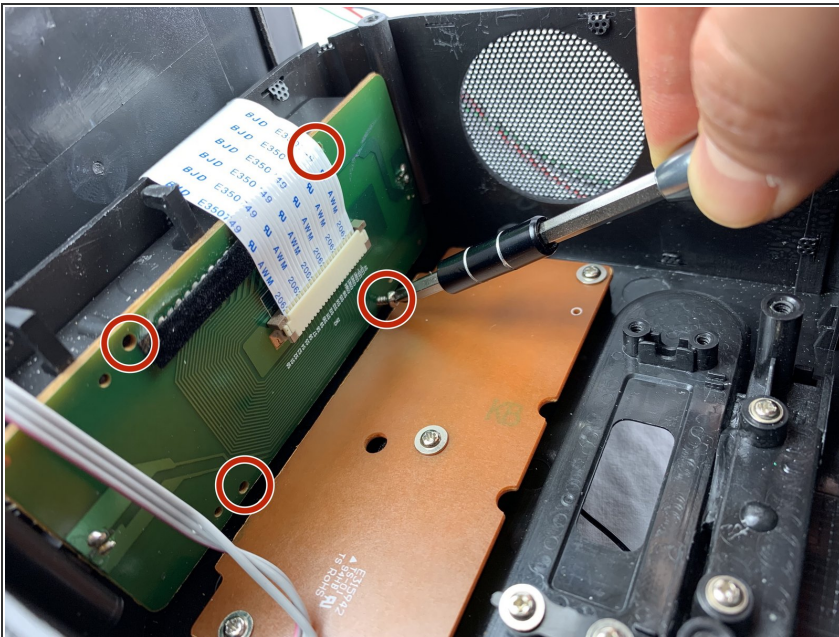


## Step 9



- Remove the two 2.5mm screws using a Phillips #1 screwdriver.
- Remove the back cover.
- Use your fingers to reposition the lightning connector.
- ⓘ Make sure ALL of the lightning connector is exposed.

## Step 10 — Screen



- Look at the side of the device. You will see a green panel connecting to the black box by a white stripe.
- Remove the four 2.5 mm Phillips #1 screws on the green panel.
- Flip the green panel to reveal the front of the screen.



## Step 11



- Locate the transparent, rectangular plastic screen cover.
- Gently lift the cover off.
- The screen is now revealed. Replace the screen with a functioning one.

To reassemble your device, follow these instructions in reverse order.