



# iHome iW1 Speaker Charging Nodes Replacement

This guide shows the steps needed to replace worn or damaged charging nodes.

Written By: Victor Germino



# INTRODUCTION

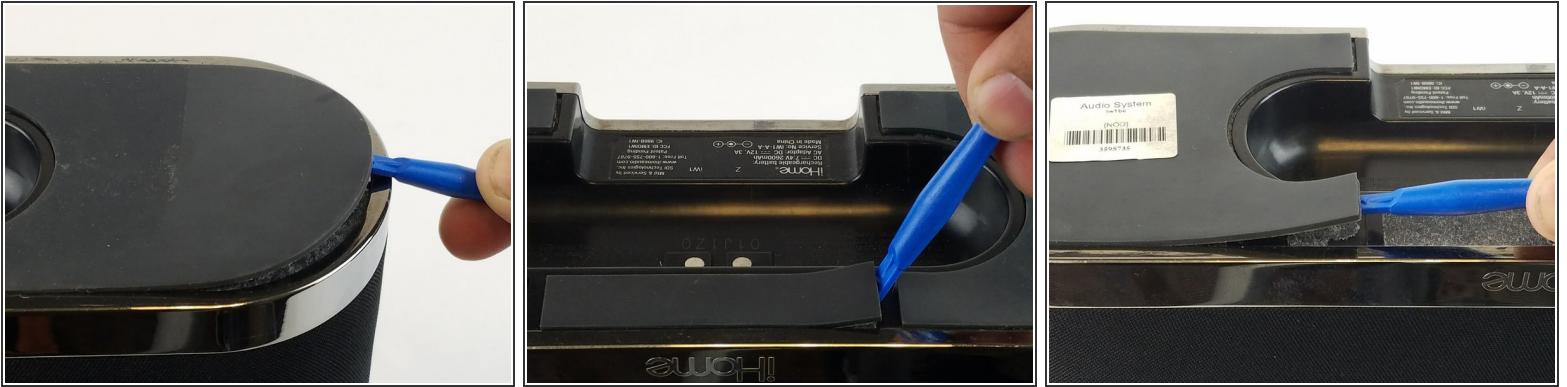
After replacing the battery and charging problems still persist, use this guide to replace the charging node.

---

## TOOLS:

- [iFixit Opening Tools](#) (1)
  - [Phillips #00 Screwdriver](#) (1)
  - [Phillips #1 Screwdriver](#) (1)
-

## Step 1 — Battery



- Remove the rubber from the bottom of the speaker, use a medium blue plastic spudger to gently work its way under the rubber and slowly peel off for each of the three feet. The order does not matter.

## Step 2



- Remove the six 11 mm Philips #1 screws found underneath the foam to remove the steel outer metal frame.
- Once the screws come off, keep them safely off to the side.

### Step 3



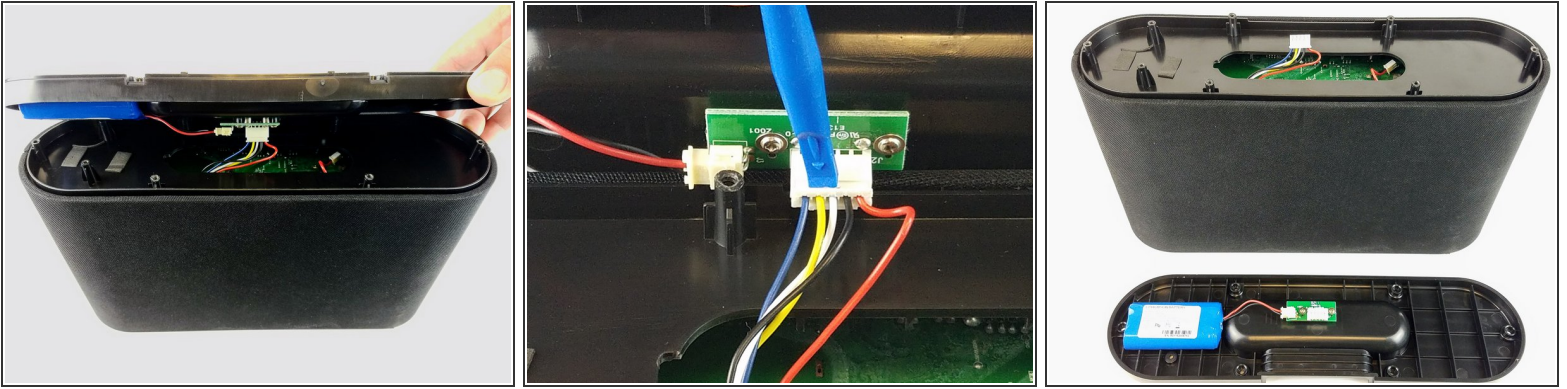
- Remove the metal frame gently and set aside.

### Step 4



- Remove the two remaining 11 mm Philips #1 screws holding the base and set them aside.

## Step 5



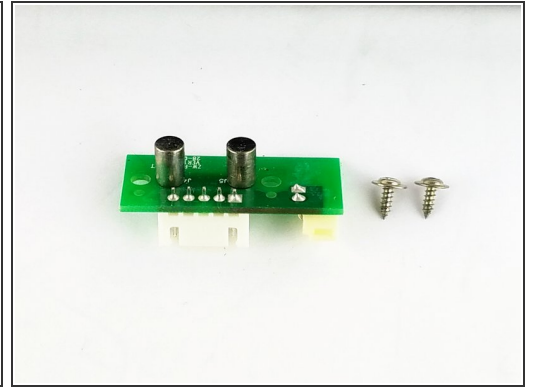
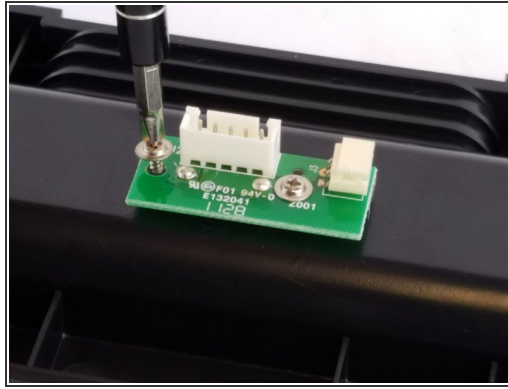
- Lift the base up gently keeping in mind that the base is connected with wires to internal parts of the speaker.
- Disconnect the white bundled cable connector attached to the charging node using a spudger. The base of the speaker is now free to be removed.

## Step 6



- Remove the white power cable connector that connects the charging node to the battery, using the plastic spudger.
- Pry the battery off using the plastic spudger.

## Step 7 — Charging Nodes



- Unscrew the two 11 mm Philips #1 screws on the charging nodes.
- Remove the charging node from the speaker and set aside.

To reassemble your device, follow these instructions in reverse order.