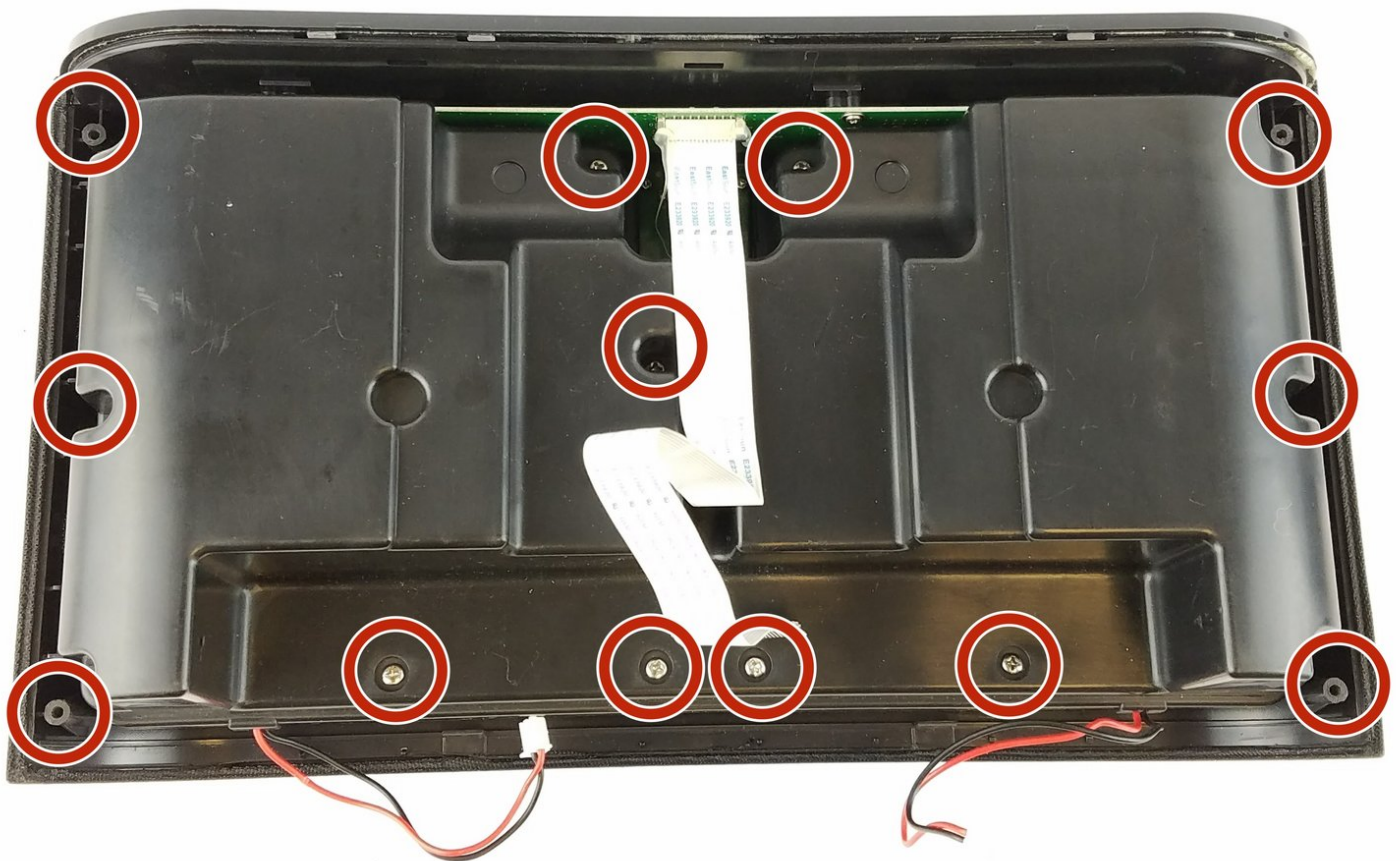




iHome iW1 Speaker Woofer Replacement

This guide demonstrates how to replace the woofers in your iHome iW1 speaker.

Written By: Victor Germino



INTRODUCTION

If you are experience poor sound quality, or the sound is not properly dispensing, replacing the woofers can resolve these issues. This guide provides the step by step procedure to replacing this part.

TOOLS:

- [iFixit Opening Tools](#) (1)
 - [Phillips #00 Screwdriver](#) (1)
 - [Phillips #1 Screwdriver](#) (1)
 - [Soldering Iron](#) (1)
-

Step 1 — Battery



- Remove the rubber from the bottom of the speaker, use a medium blue plastic spudger to gently work its way under the rubber and slowly peel off for each of the three feet. The order does not matter.

Step 2



- Remove the six 11 mm Philips #1 screws found underneath the foam to remove the steel outer metal frame.
- Once the screws come off, keep them safely off to the side.

Step 3



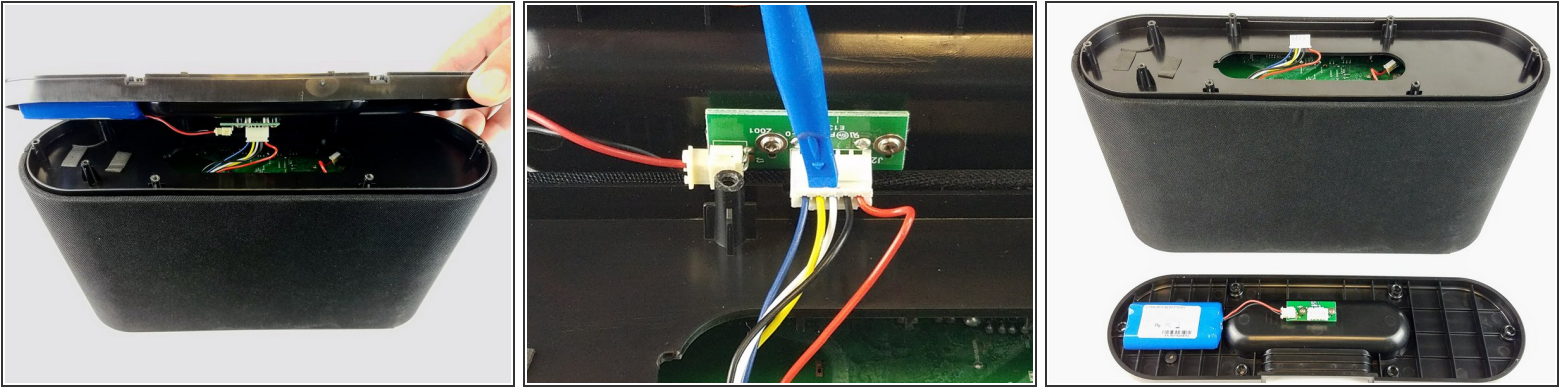
- Remove the metal frame gently and set aside.

Step 4



- Remove the two remaining 11 mm Philips #1 screws holding the base and set them aside.

Step 5



- Lift the base up gently keeping in mind that the base is connected with wires to internal parts of the speaker.
- Disconnect the white bundled cable connector attached to the charging node using a spudger. The base of the speaker is now free to be removed.

Step 6



- Remove the white power cable connector that connects the charging node to the battery, using the plastic spudger.
- Pry the battery off using the plastic spudger.

Step 7 — Wi-Fi Adapter



- Pry off the mesh frame from the back side of the speaker with a plastic spudger until you hear a click noise when the clip is removed.

Step 8



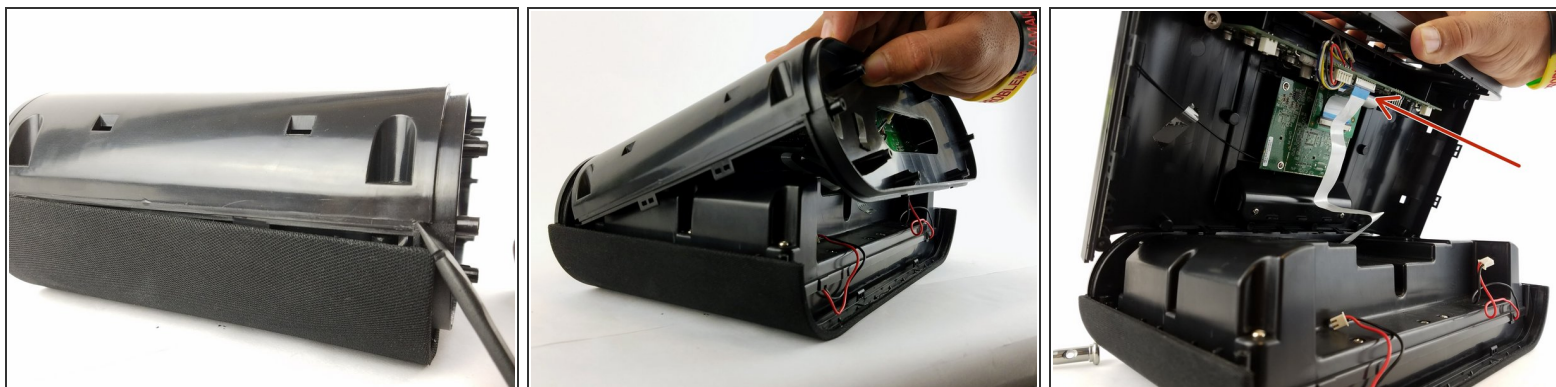
- Use a plastic spudger to remove the rubber grommets from the four corners of the speaker underneath the mesh frame.

Step 9



- Remove the four 11 mm Philips #1 screws from beneath the rubber grommet that was removed from the previous step in all four corners.

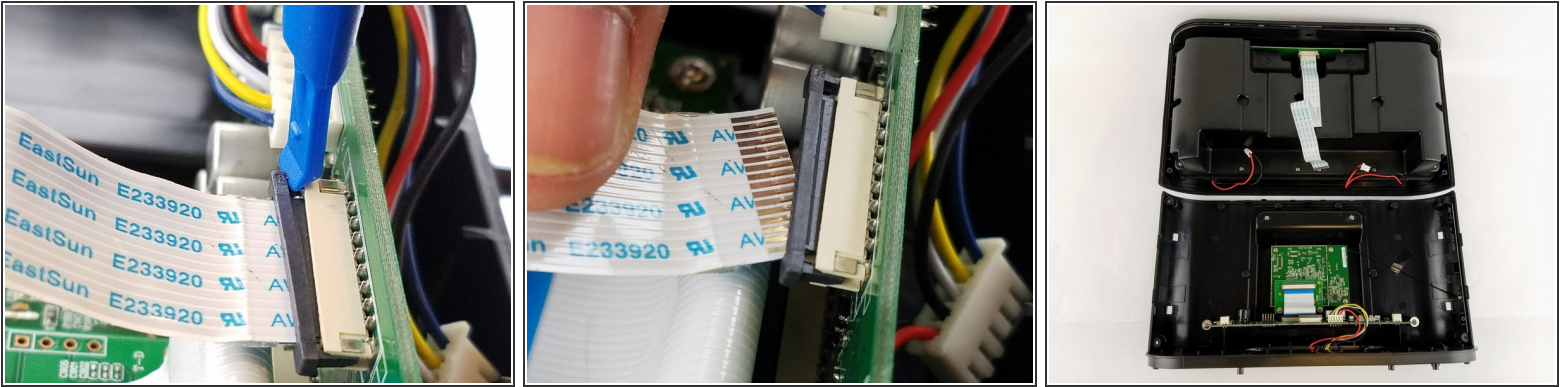
Step 10



- Separate the mesh frame and plastic frame by placing the spudger in between them.

⚠ Do not pull the two pieces since the two pieces are held together with the ribbon cable.

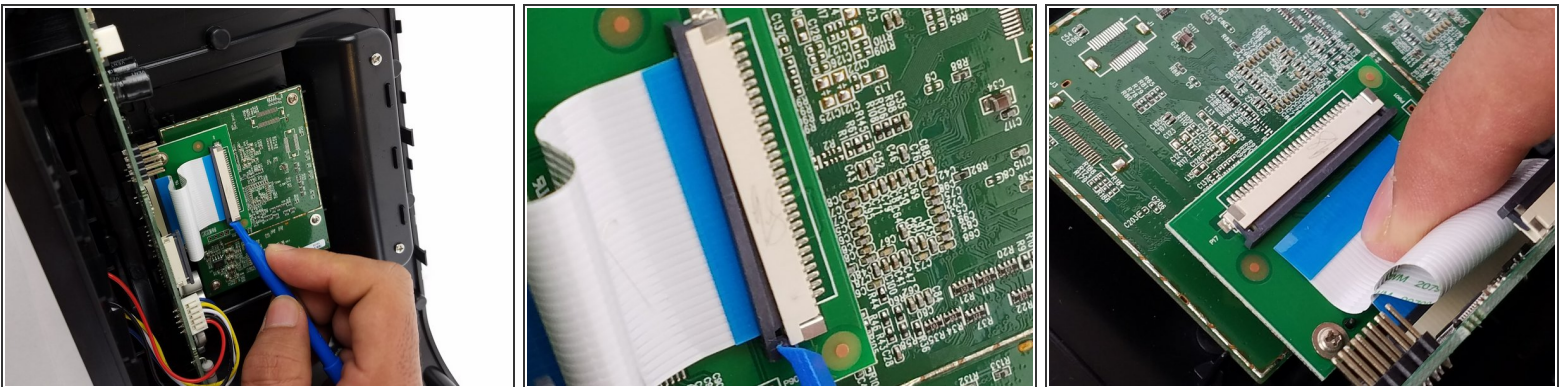
Step 11



- Remove the ribbon cable by pulling the black clip towards the cable, then gently pull the ribbon cable to fully separate the mesh frame and plastic frame.

i The black locking clip will only move about 2mm out.

Step 12



- Remove the second ribbon cable that is connected to the main circuit board and the WiFi adapter.

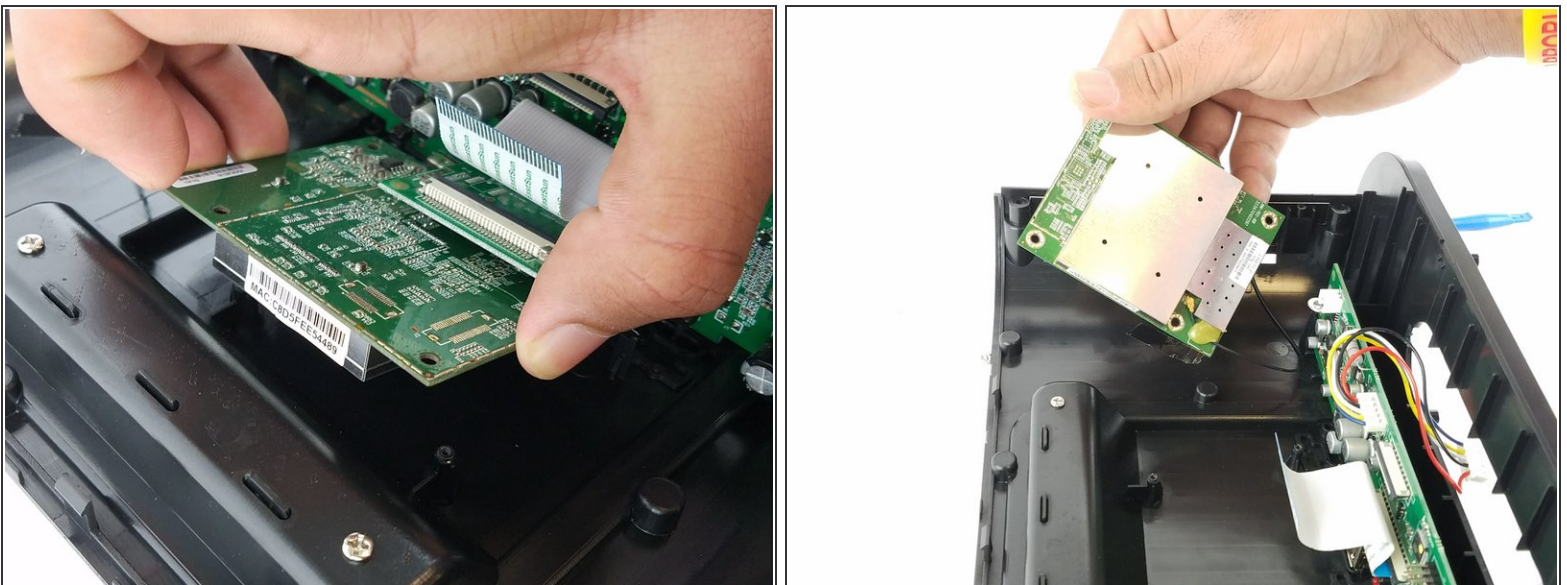
i The black locking clip will only move about 2mm out.

Step 13



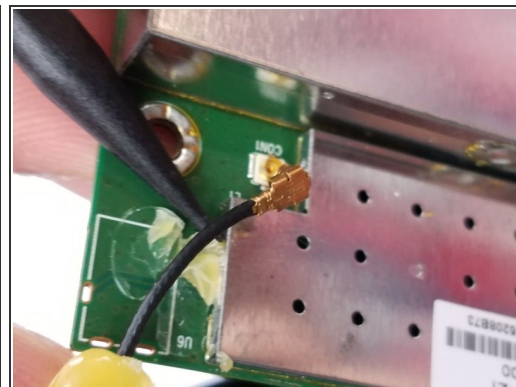
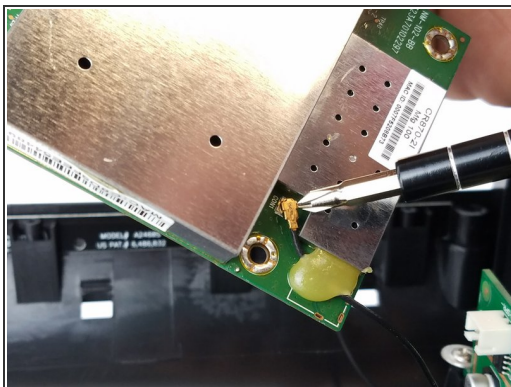
- Unscrew the five 11 mm Philips #1 screws found on the outside of the circuit board.

Step 14



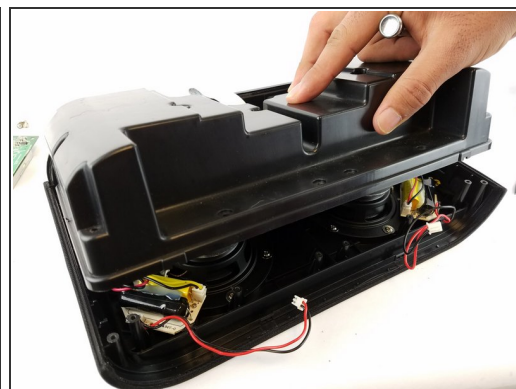
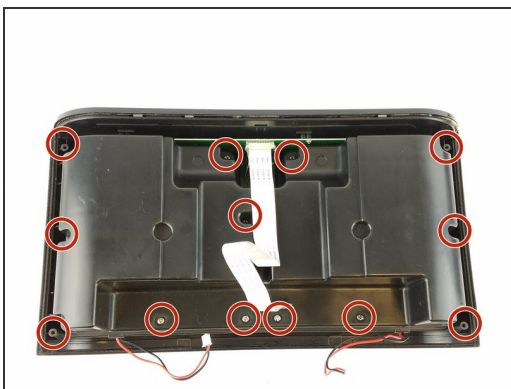
- Lift the circuit board to expose the wifi antenna wire.

Step 15



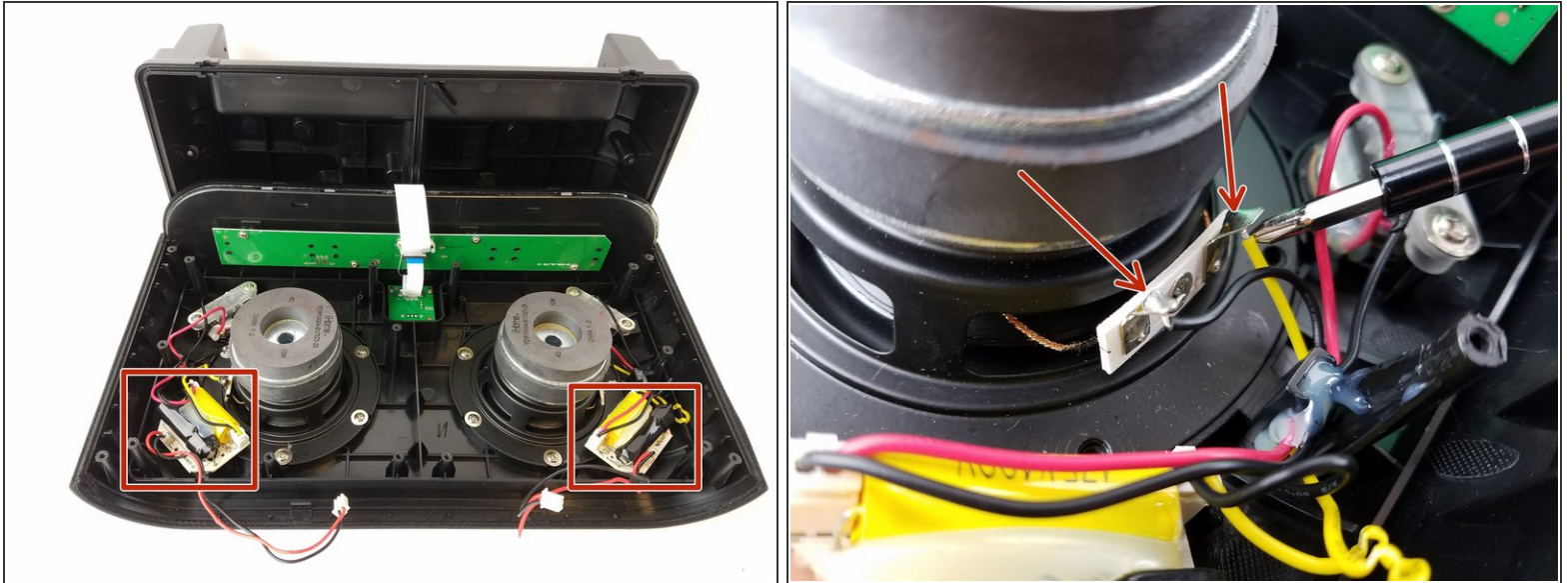
- Pry the glue and unclip the wifi antenna plug from the circuit board.

Step 16 — Woofer



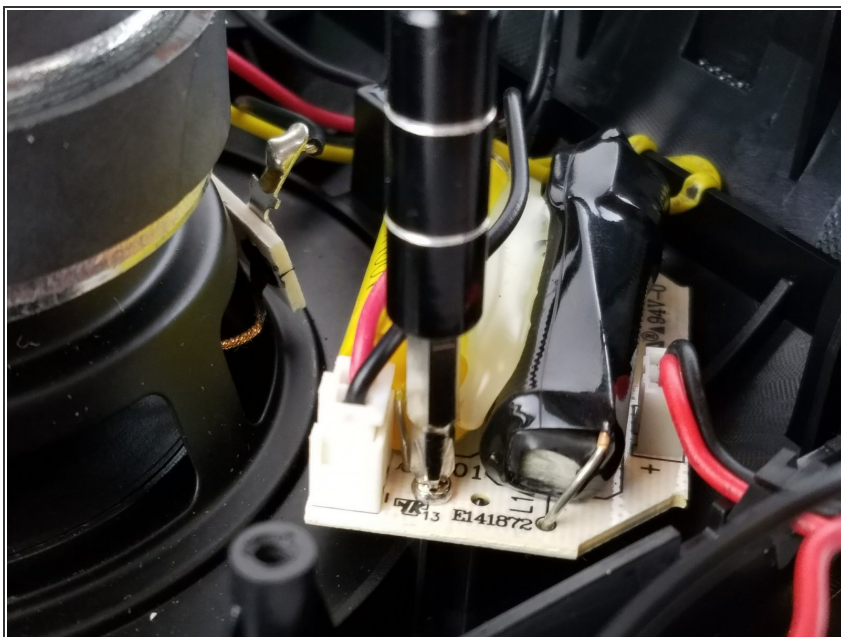
- Remove the thirteen 11 mm Philips #1 screws from the perimeter of the plastic case.
- Remove the screws from the center of the plastic case as well.
- Lift the case up to expose the Woofer, Tweeter, and filter.

Step 17



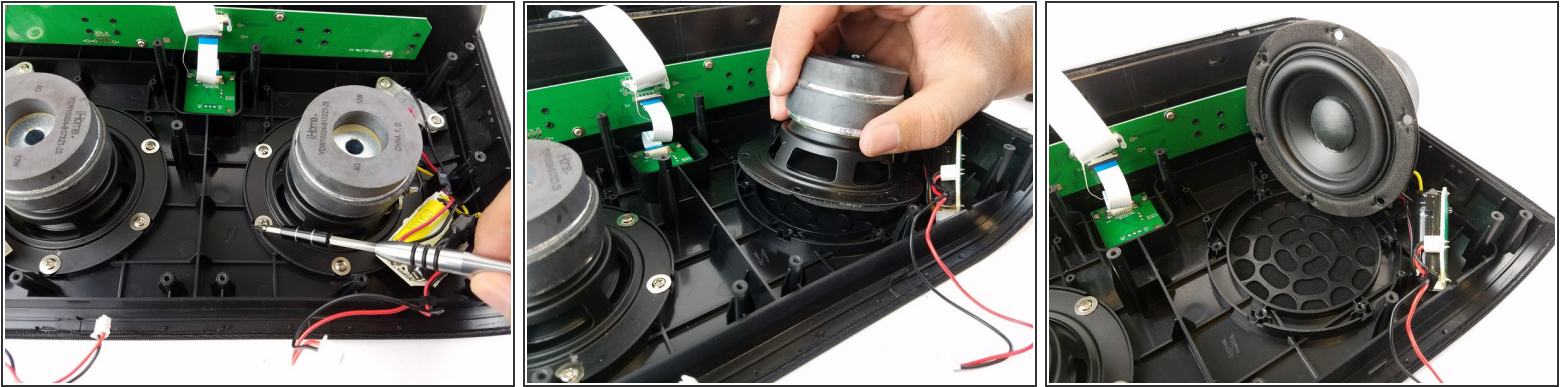
- Desolder the wires going from the woofer to the filter.
- Some tips on soldering can be found by clicking this link. [How To Solder and Desolder Connections](#)
- ⓘ Make sure to remember the orientation and color coding of the wires before desoldering.

Step 18



- Remove the two 11 mm Philips #1 screws holding the filter to move it out of the way.

Step 19



- Remove the six 11 mm Philips #1 screws from the perimeter of the woofer.
- Gently lift the woofer from the plastic frame.

To reassemble your device, follow these instructions in reverse order.