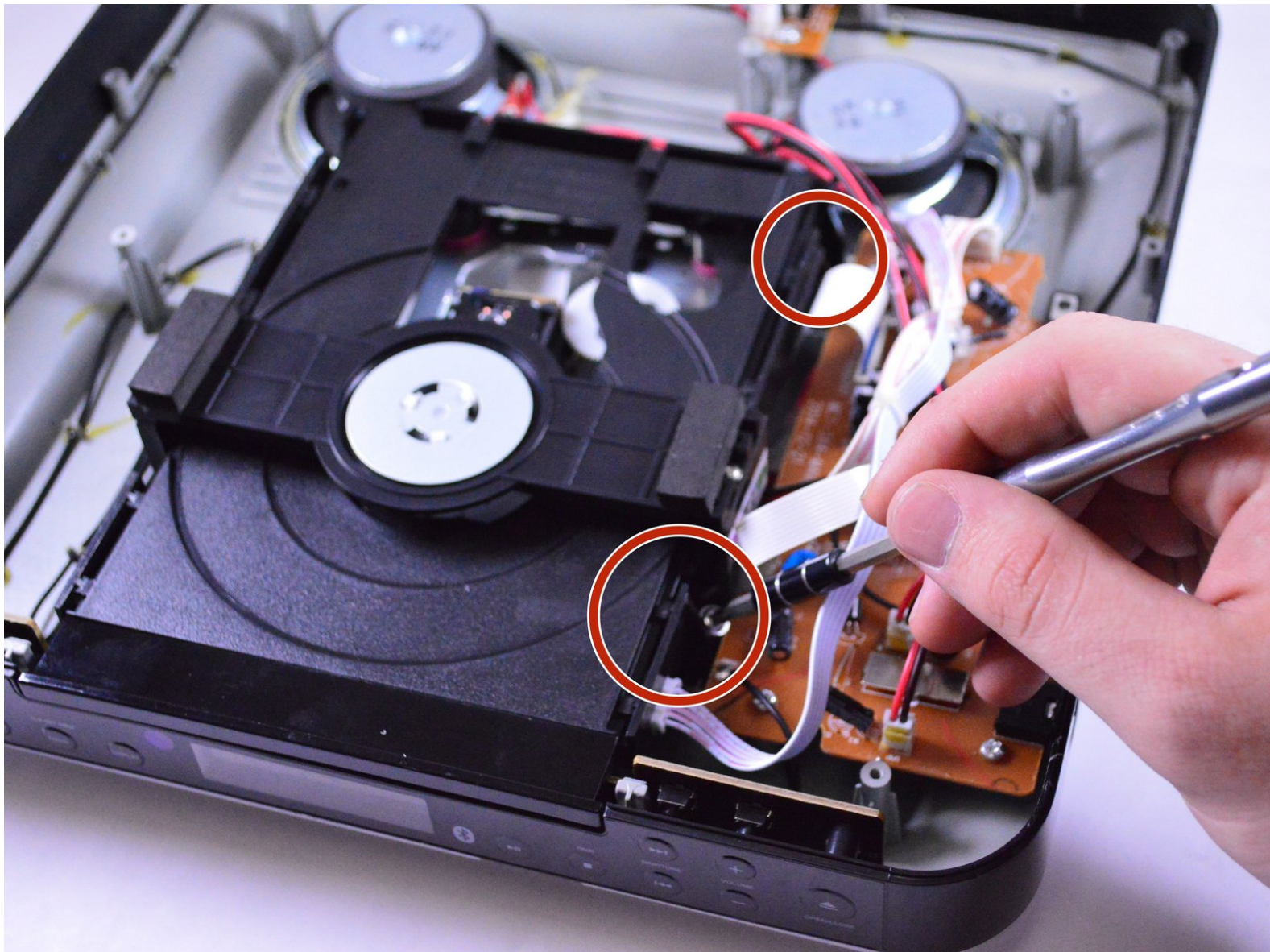




iLive IKBC384S Disk Drive Replacement

Replace your faulty disk drive in your iLive IKBC384S.

Written By: Allen Dover



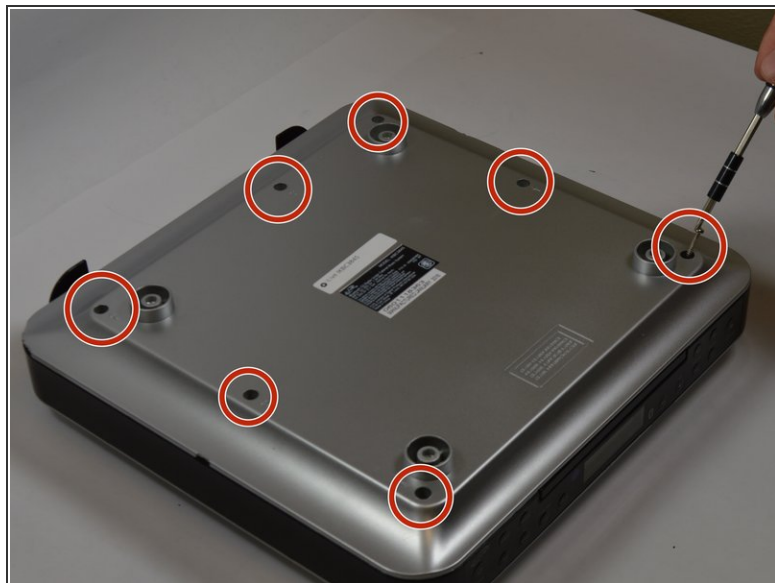
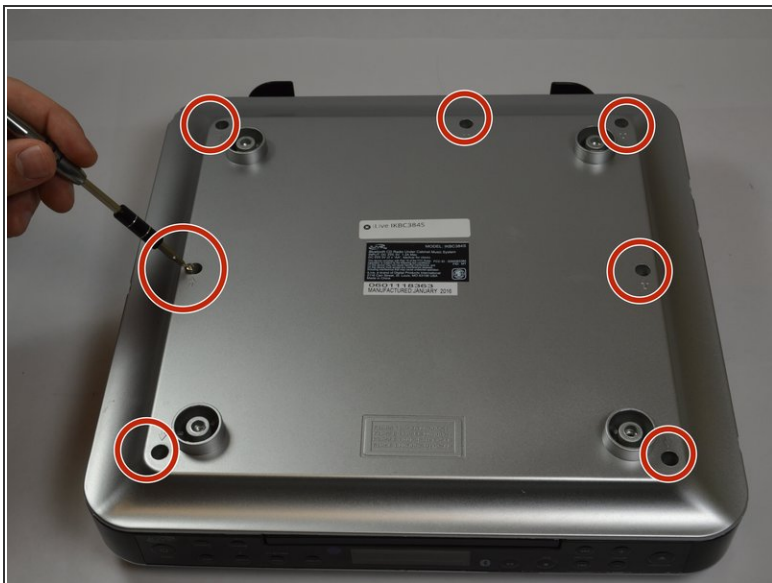
INTRODUCTION

You will be replacing the entire disk drive in your radio, the only special tool that is needed for this replacement are the iOpener or heat gun because of the adhesive.

TOOLS:

- [iOpener](#) (1)
 - [iFixit Opening Tools](#) (1)
 - [Phillips #00 Screwdriver](#) (1)
-

Step 1 — Top Cover



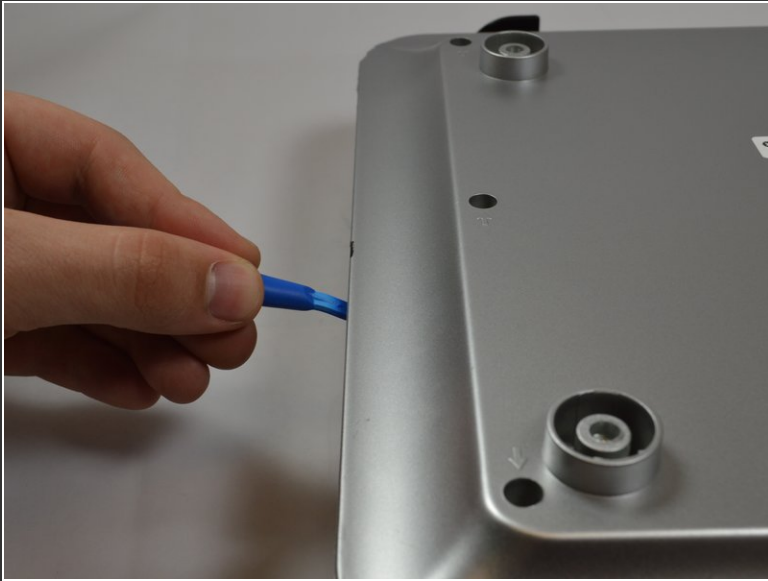
- Make sure you remove all seven 3 mm screws before proceeding to the next step.

Step 2



- Use iOpener or heat gun on all sides except the front.

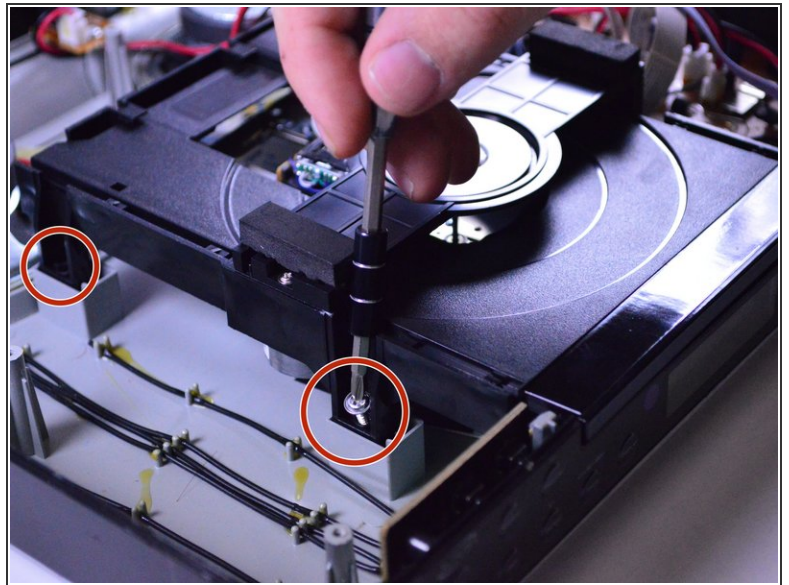
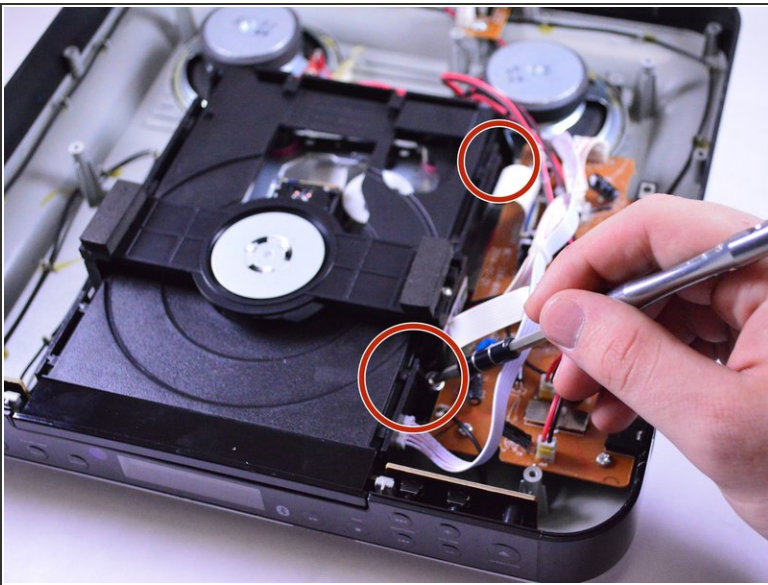
Step 3



- Be cautious when taking the top of the device off there may still be some adhesive stuck to device.

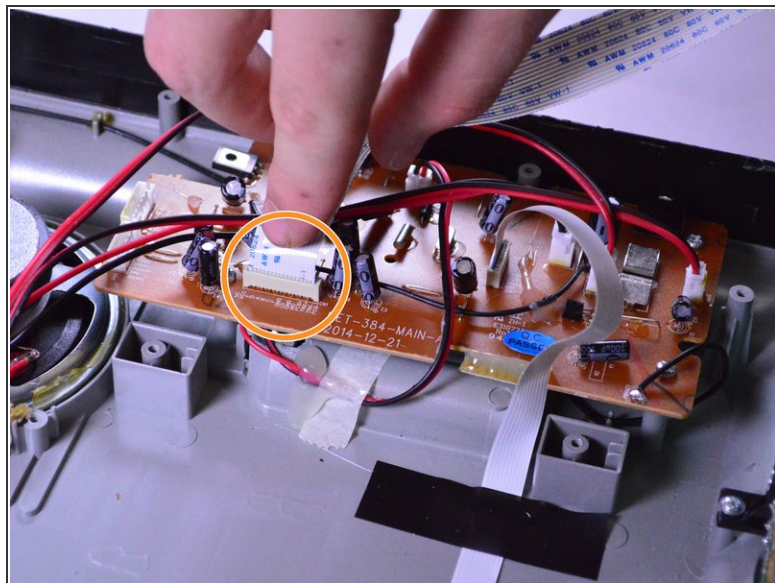
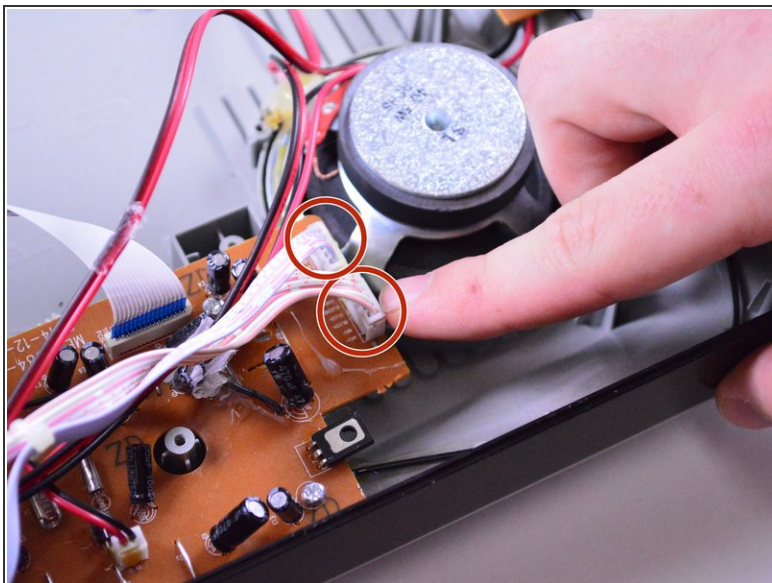
⚠ The top of the device will be very difficult to remove because of the adhesive holding it together.

Step 4 — Disk Drive



- Remove all four screws(13.5 mm in length) that are securing the device

Step 5



- Remove both of the connected cords on the motherboard.
- Also remove the flat ribbon cable that is connected to the motherboard.
- ⓘ Once you have removed all screws and cables connected to motherboard the disk drive can be easily removed

To reassemble your device, follow these instructions in reverse order.