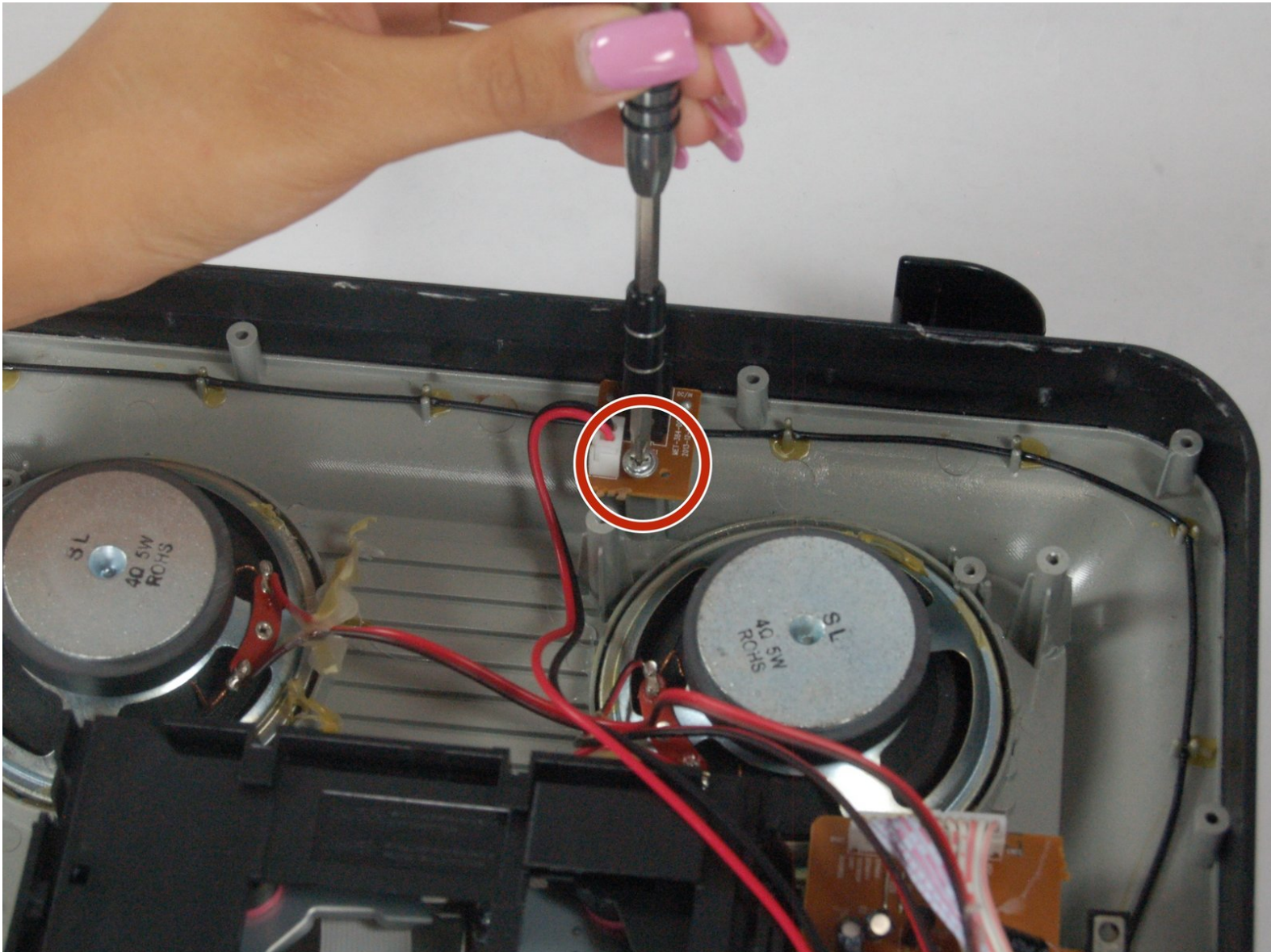




iLive IKBC384S Power cord and connector Replacement

iLive IKBC384S Power cord and connector Replacement.

Written By: Allen Dover



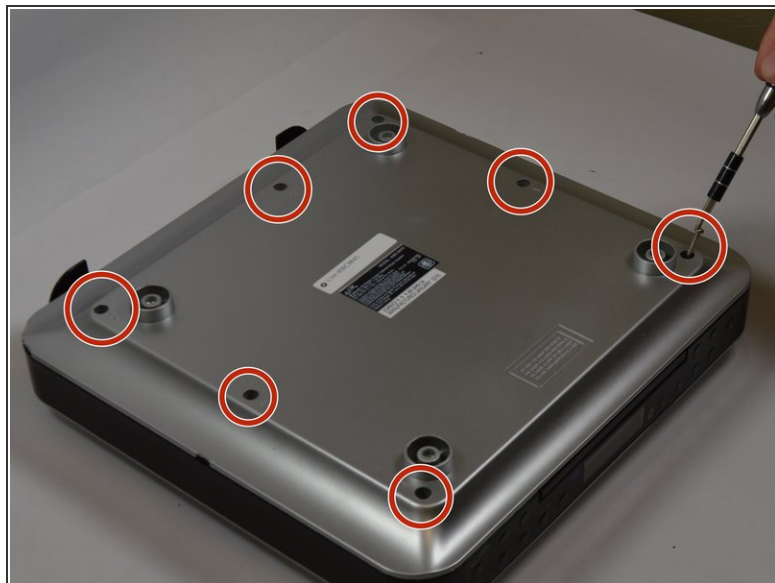
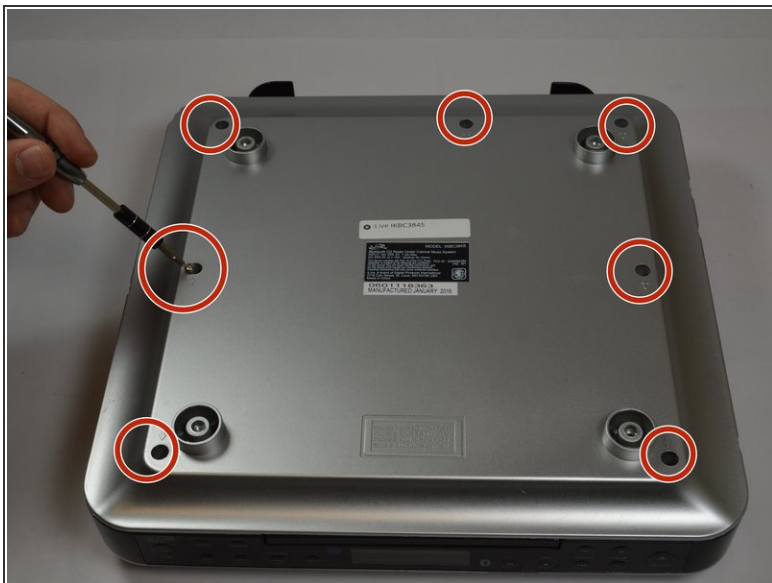
INTRODUCTION

You will be replacing the AC power connector and cord in the device to make sure you will have power to the device.

TOOLS:

- [iOpener](#) (1)
 - [iFixit Opening Tools](#) (1)
 - [Phillips #00 Screwdriver](#) (1)
-

Step 1 — Top Cover



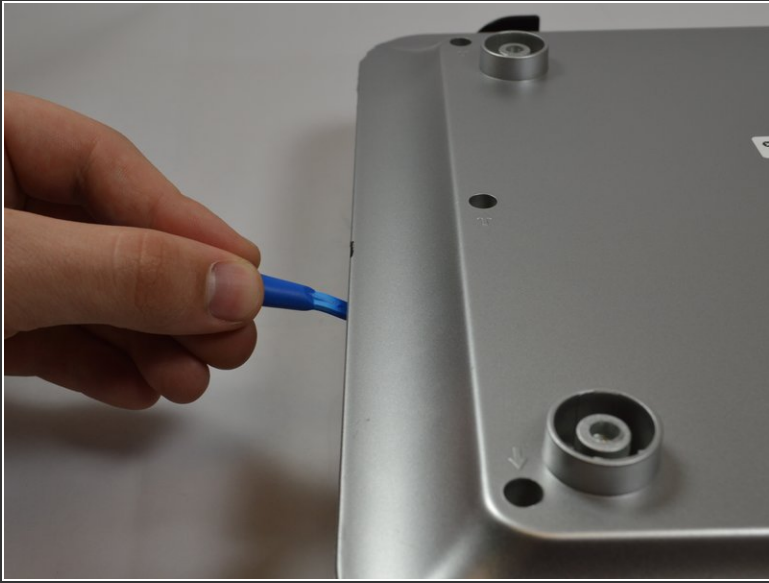
- Make sure you remove all seven 3 mm screws before proceeding to the next step.

Step 2



- Use iOpener or heat gun on all sides except the front.

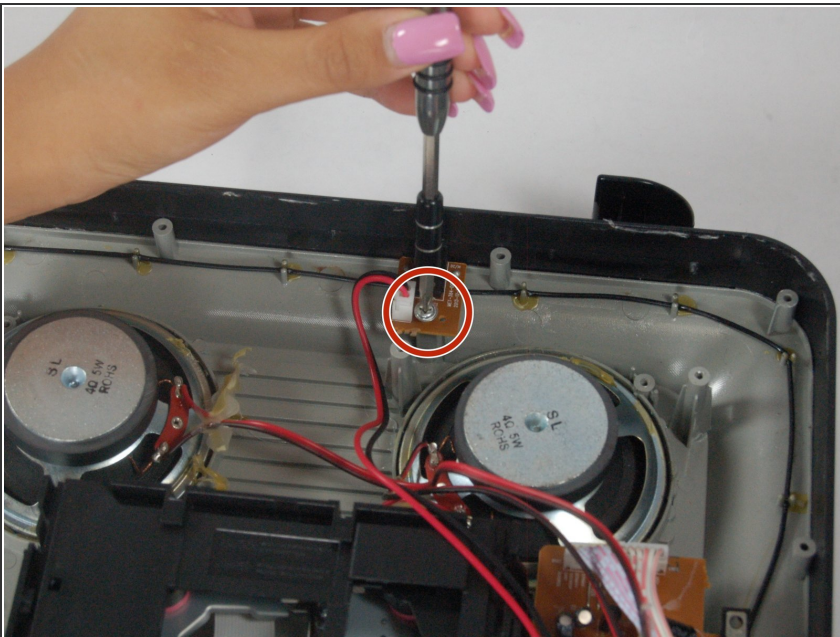
Step 3



- Be cautious when taking the top of the device off there may still be some adhesive stuck to device.

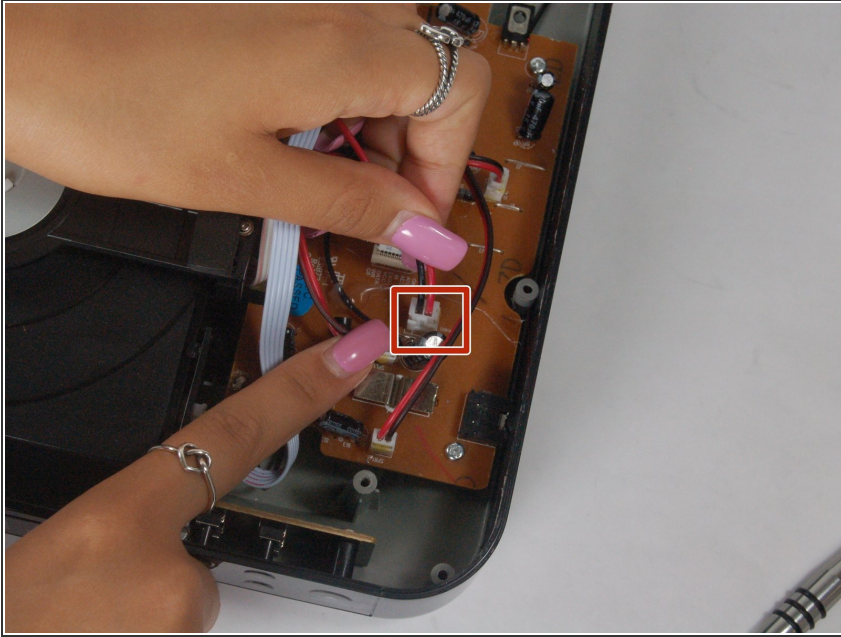
⚠ The top of the device will be very difficult to remove because of the adhesive holding it together.

Step 4 — Power cord and AC connector



- Remove the one (13.5mm in length) screw holding the power connector and cord in place.

Step 5



- Remove the power cord connected to the motherboard.

To reassemble your device, follow these instructions in reverse order.