



# iMac 2011 SSD Upgrade

Prereq-only to upgrade a mid 2011 iMac with a fast new 2.5" SSD.

Written By: Arthur Shi



# INTRODUCTION

Follow this guide to upgrade your iMac's hard drive with an SSD. It includes steps on installing the SSD's temperature sensor so that the Mac's fans will operate at the correct speed.

Prerequisite-only guide. SSD upgrade with temperature sensor for mid 2011 iMacs.



## TOOLS:

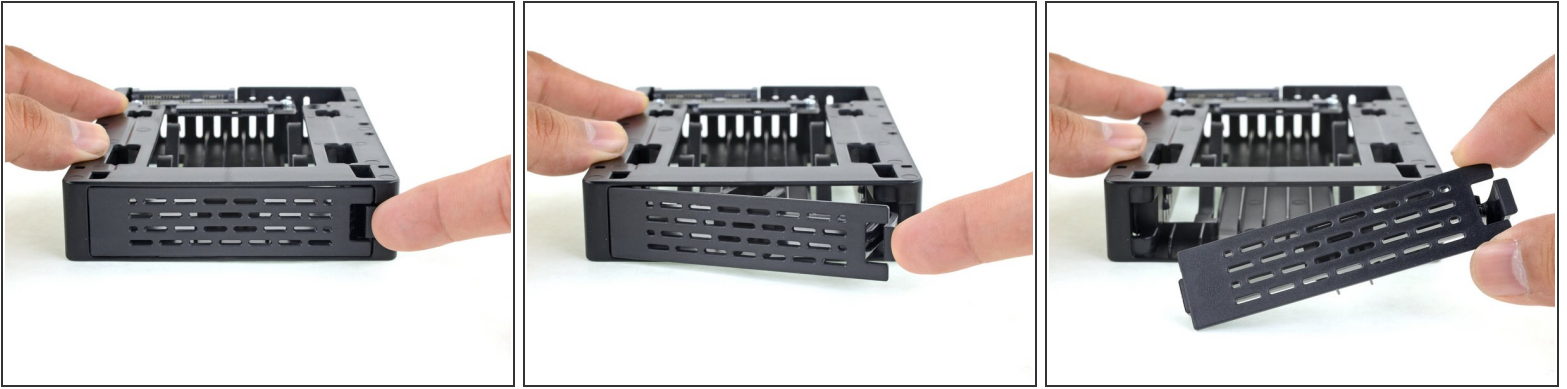
- [Phillips #1 Screwdriver](#) (1)



## PARTS:

- [iMac Intel 21.5" and 27" Mid 2011 SSD Upgrade Bundle](#) (1)

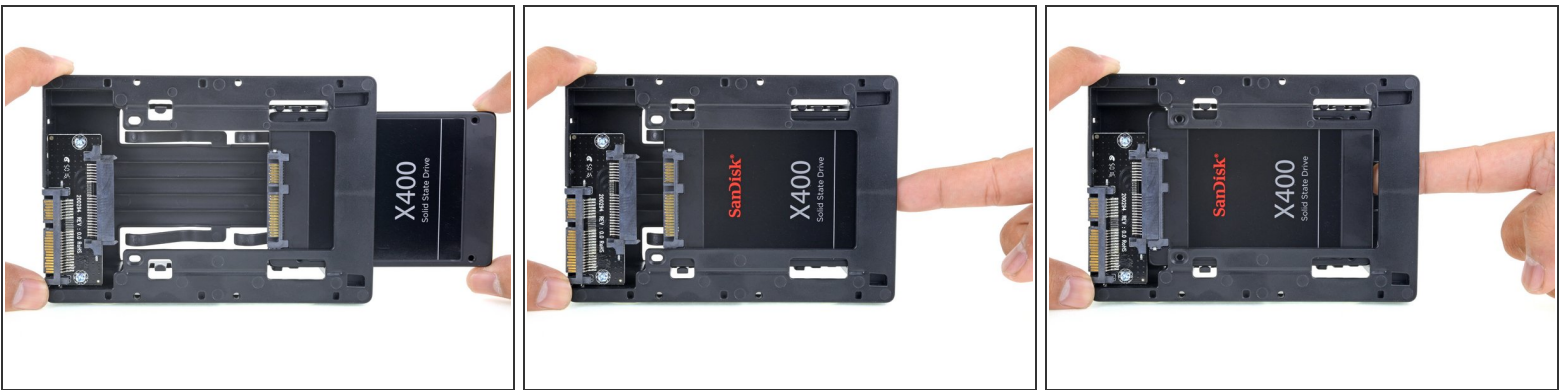
## Step 1 — SSD



**i** Only follow the next 9 steps if you are replacing your hard drive with an SSD kit.

- Depress the enclosure's front plate latch with your finger. While holding the latch down, swing the plate out.
- Remove the front plate.

## Step 2



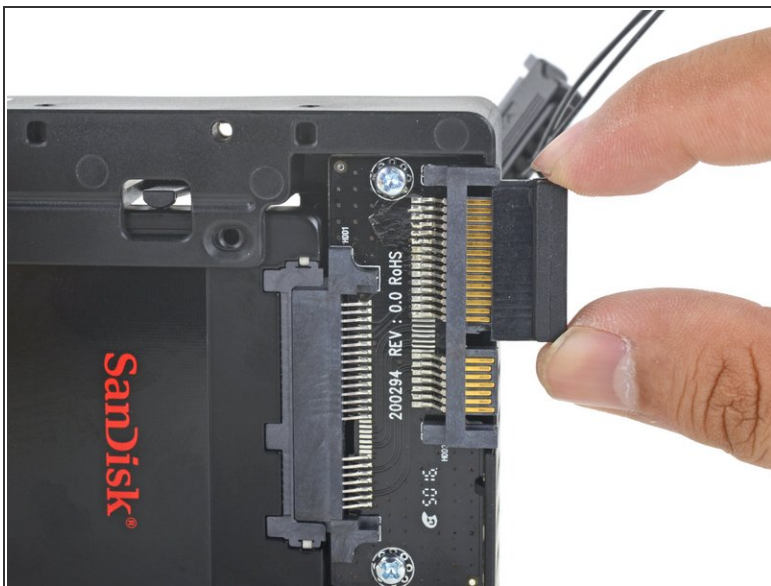
- Line up the small SATA connectors so that the narrow side of the connector on the SSD matches the narrow side on the enclosure connector.
- Slide the drive in through the front of the enclosure until the SATA connector is fully seated.
- i** The SSD's ports connect with the enclosure in only one way. If the ports are not lining up, rotate the SSD and try again.

### Step 3



- You may optionally install two Philips #1 screws that came with the enclosure kit to secure the SSD in the enclosure.

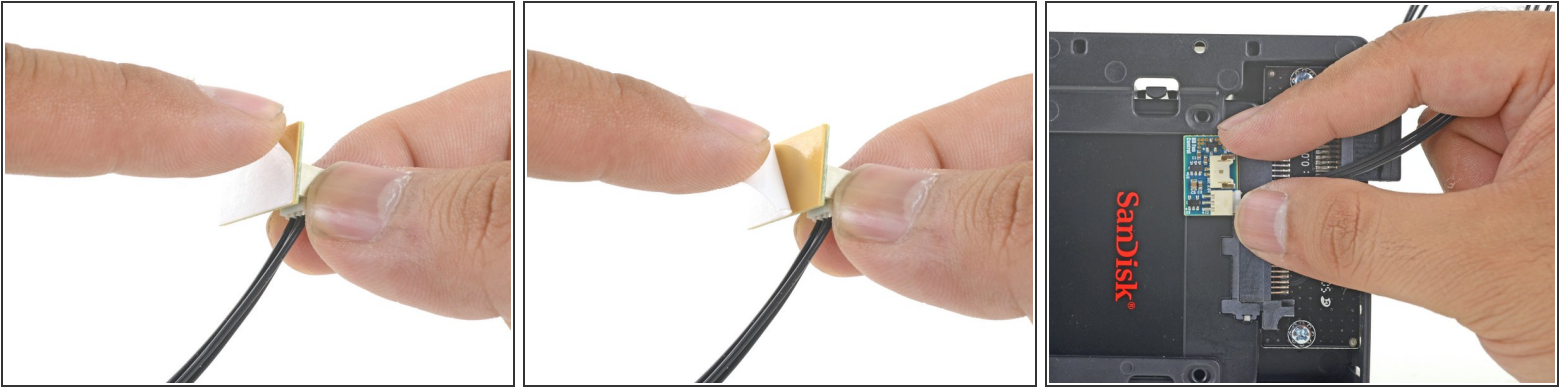
### Step 4



- Plug the included sensor-enabled SATA power cable into the wide side of the enclosure's SATA connector.
- ⓘ The cable is keyed to connect in only one way. If you can't connect the cable, rotate it 180°, and try again.

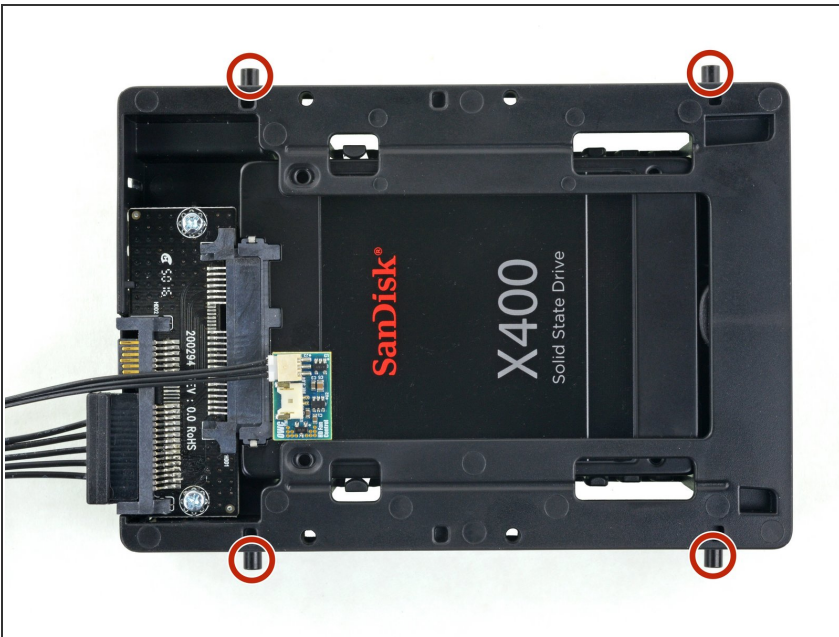


## Step 5



- Peel the backing off of the adhesive back of the small temperature sensor board.
- Adhere the temperature sensor board to an exposed, metal area of the surface of the SSD, as close as possible to the SATA connector.
- Fold the excess temperature sensor wires so that they are out of the way while you install the enclosure.

## Step 6



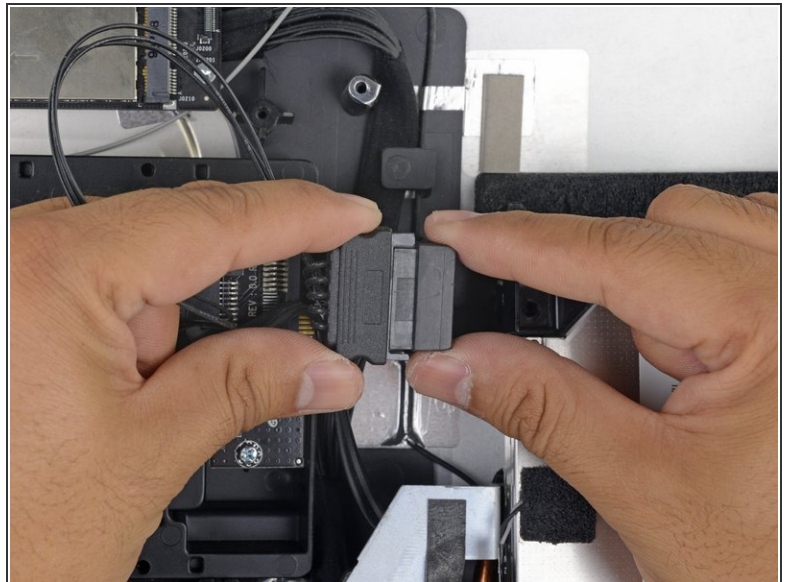
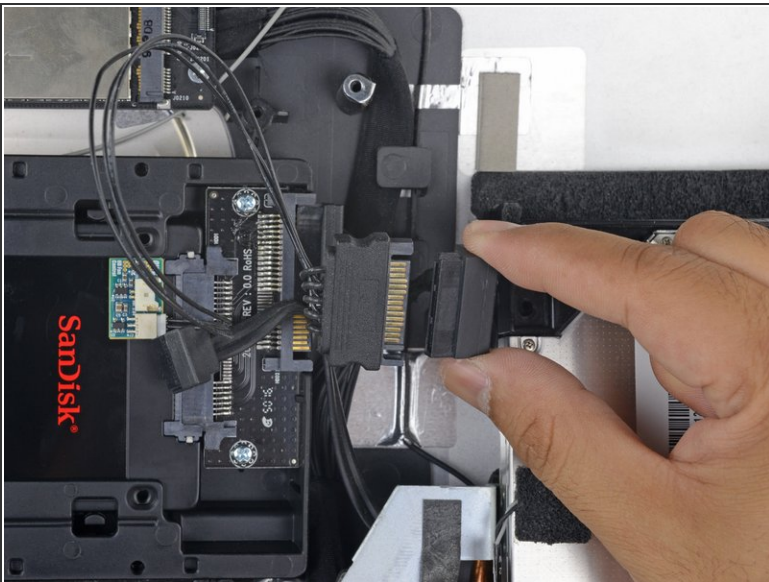
- Install the mounting pins from the old hard drive onto the sides of the enclosure.
- ⓘ The holes on the enclosure may not be threaded, so screwing the mounting pins into them may require extra effort. Take your time and screw them in slowly, making sure they go in straight.

## Step 7



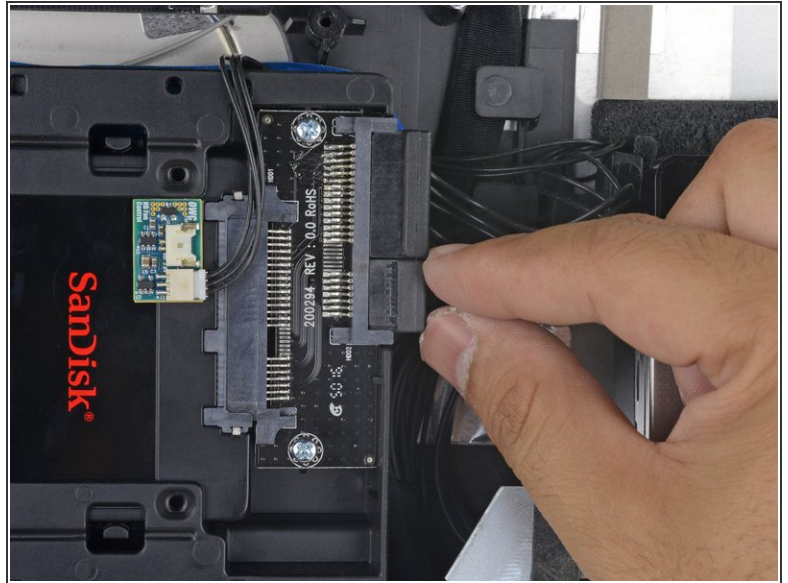
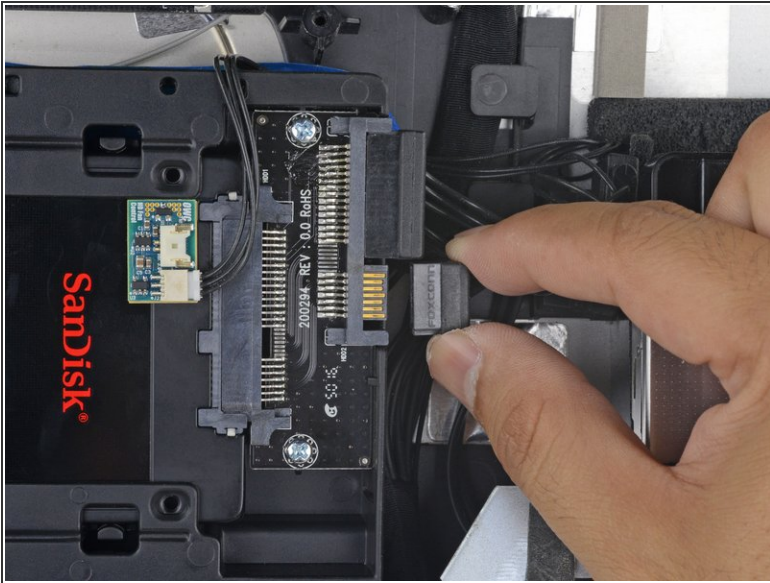
- Attach any mounting brackets removed from the old hard drive onto the enclosure.

## Step 8



- Connect the iMac's SATA power cable to the new temperature-capable SATA power cable.
- Route the SATA cables where they will not interfere with any other components.

## Step 9



- Connect the iMac's SATA data cable to the enclosure's SATA data connector.

To reassemble your device, follow these instructions in reverse order.