



iMac 2012-2017 SSD Upgrade

Prerequisite-only guide to upgrade a 2012-2017 iMac to an SSD.

Written By: Arthur Shi



INTRODUCTION

Follow this guide to upgrade your iMac's hard drive with an SSD. It includes steps on installing the SSD's temperature sensor so that the Mac's fans will operate at the correct speed.

Prerequisite-only guide. SSD upgrade with temperature sensor for 2012-2017 iMacs.



TOOLS:

- [Phillips #1 Screwdriver](#) (1)



PARTS:

- [iMac Intel 27" Late 2012-Mid 2017 SSD Upgrade Bundle](#) (1)

Step 1 — SSD



i Only follow the next 8 steps if you are replacing your hard drive with an SSD kit.

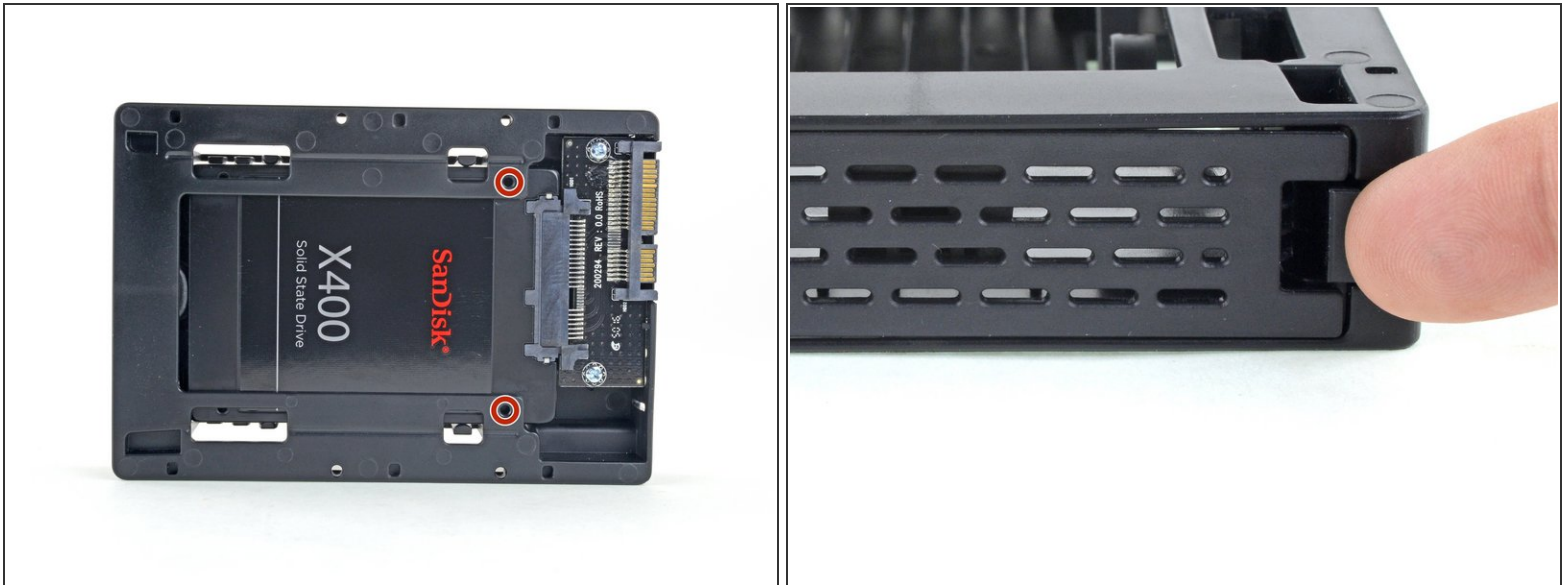
- Depress the enclosure's front plate latch with your finger. While holding the latch down, swing the plate out.
- Remove the front plate.

Step 2



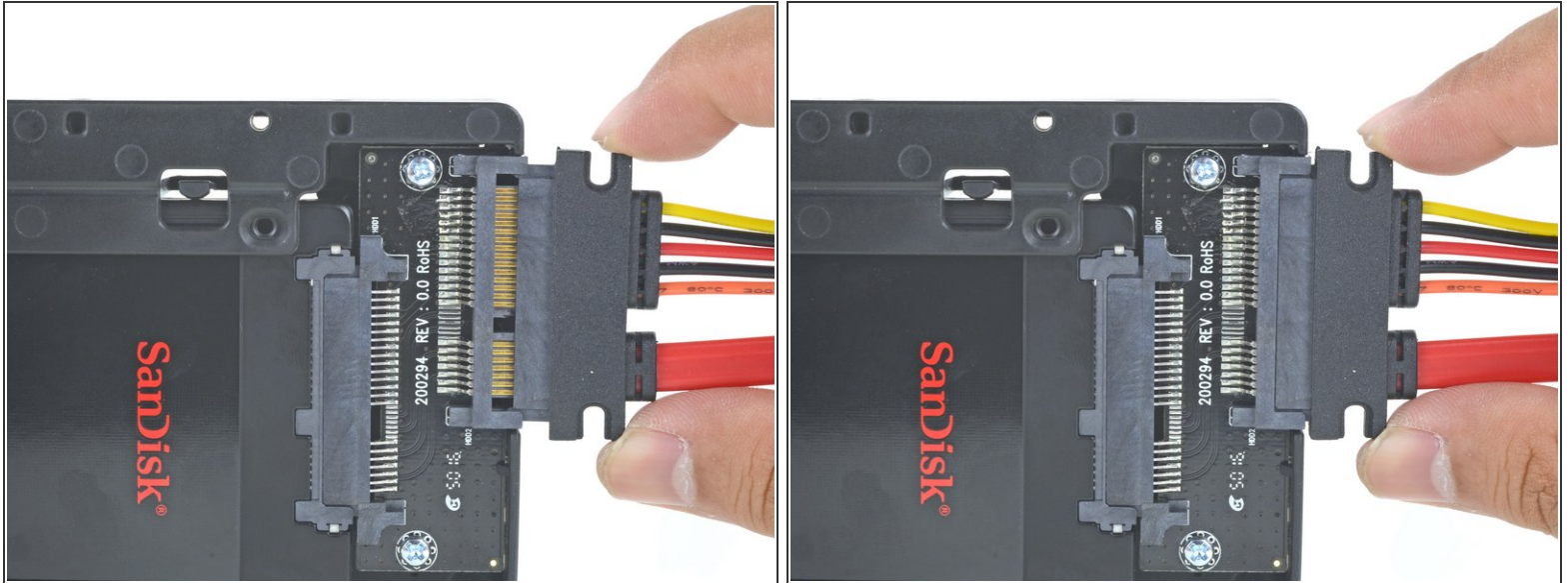
- Line up the small SATA connector so that the short side on the SSD connector matches the short side on the enclosure connector.
- Slide the drive in through the front of the enclosure until the SATA connector is fully seated.
- i** The SSD connects with the enclosure in only one way. If the connectors are not lining up, rotate the SSD and try again.

Step 3



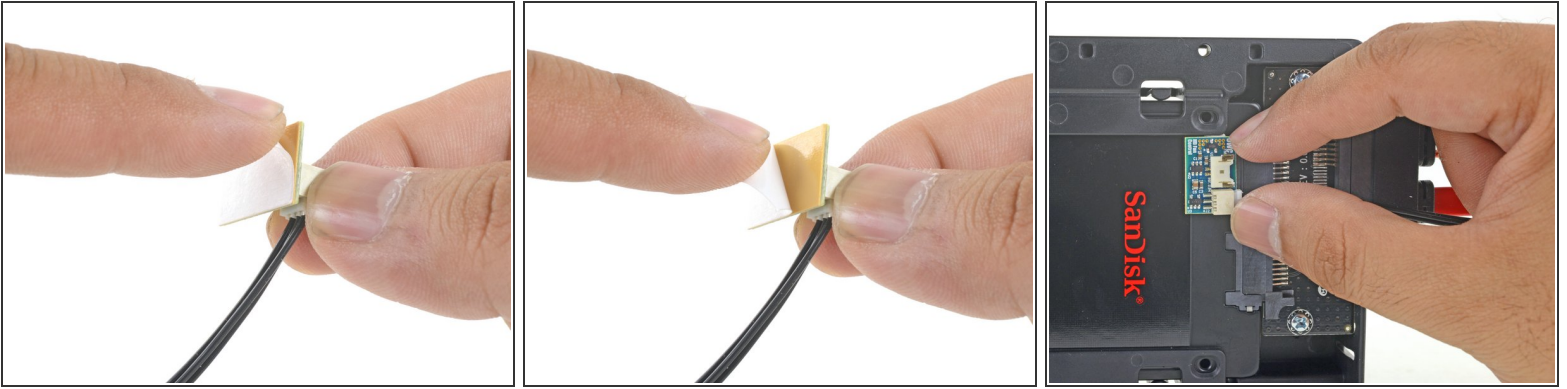
- You may optionally install two Philips #1 screws that came with the enclosure kit to secure the SSD in the enclosure.
- Replace the front plate.

Step 4



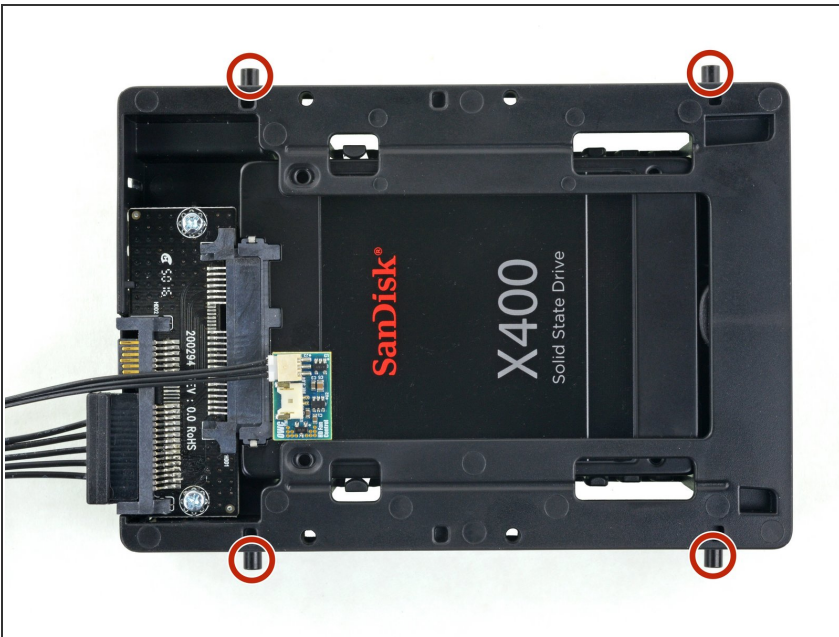
- Plug the included sensor-enabled SATA cable into the enclosure's port.
 - ⓘ Line up the narrow side of the cable connector with the narrow side of the enclosure connector. The cable is keyed to connect in only one way. If you can't connect the cable, rotate it 180°, and try again.

Step 5



- Peel the backing off of the adhesive back of the small temperature sensor board.
- Adhere the temperature sensor board to an exposed, metal area of the surface of the SSD, as close as possible to the SATA connector.
- Fold the excess temperature sensor wires so that they are out of the way while you install the enclosure.

Step 6



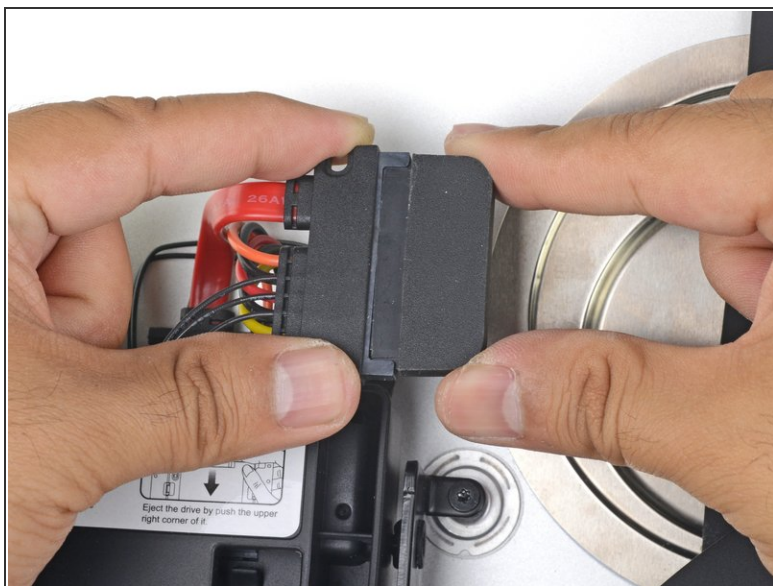
- Install the mounting pins from the old hard drive onto the sides of the enclosure.
- ⓘ The holes on the enclosure may not be threaded, so screwing the mounting pins into them may require extra effort. Take your time and screw them in slowly, making sure they go in straight.

Step 7



- Attach any mounting brackets removed from the old hard drive onto the enclosure.

Step 8



- Attach the iMac's SATA-combo cable to the new temperature-capable SATA-combo cable.
- Route the SATA cables where they will not interfere with any other components.
 - ⓘ Try to keep the cables free from any sharp bends and route them such that they are not pinched.

To reassemble your device, follow these instructions in reverse order.