



iMac G4 15" 700 MHz EMC 1873 PRAM Battery Replacement

Replacing the PRAM battery.

Written By: Ryan Kozak



INTRODUCTION

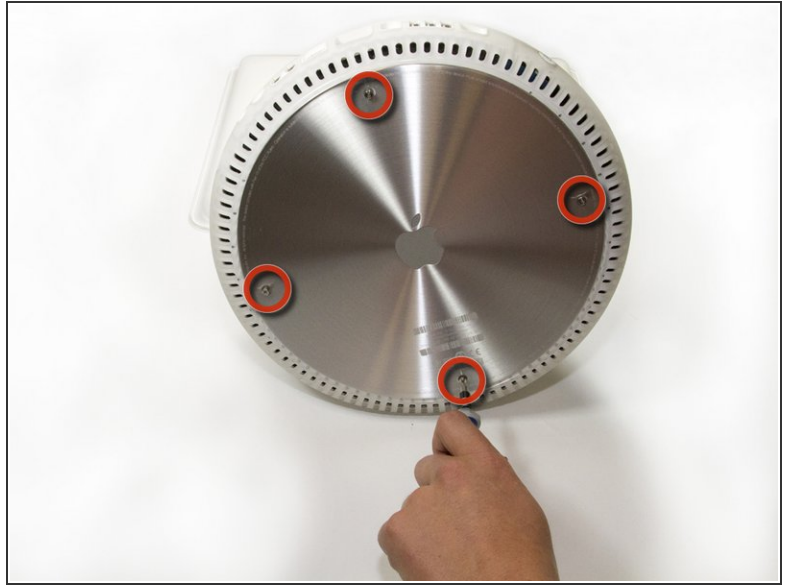
How to replace the PRAM battery on your iMac G4.



TOOLS:

- [Phillips #00 Screwdriver](#) (1)
 - [Spudger](#) (1)
 - [T15 Torx Screwdriver](#) (1)
-

Step 1 — Outer Base Plate



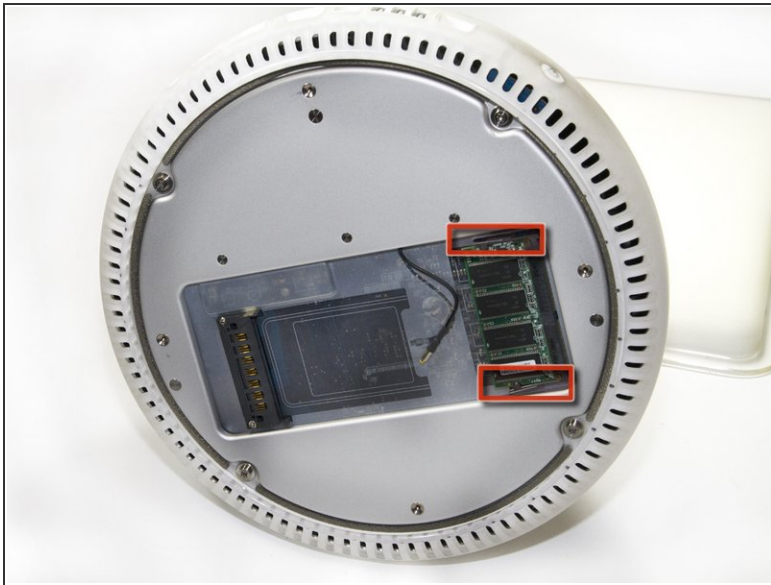
- ① Place the computer monitor face down on a safe, harmless surface.
- Using a Phillips #00 screw driver, remove the four 6.86 mm screws from the metal plate.

Step 2



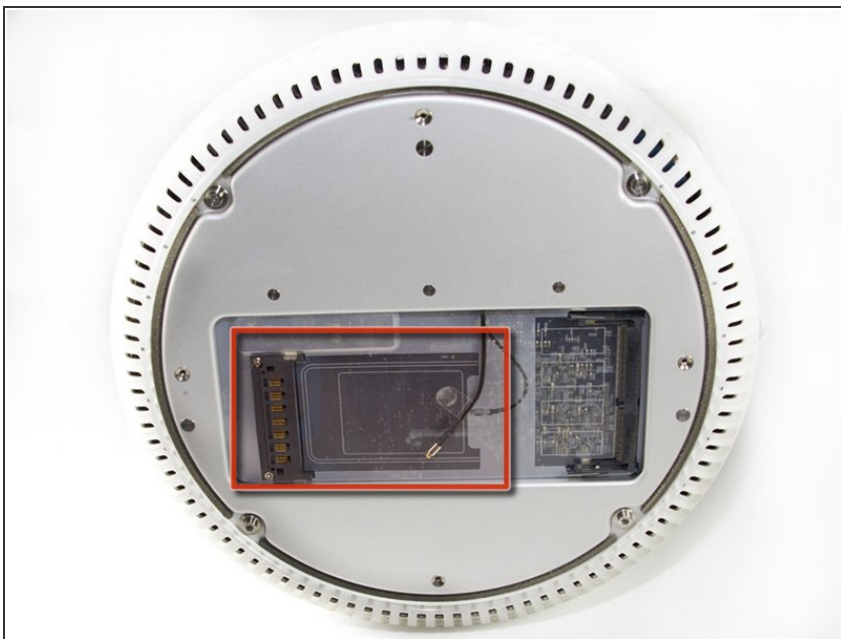
- Remove the metal plate from bottom of the iMac G4.
- ① The four screws do not completely separate from the metal plate.

Step 3 — RAM DIMM



- Release the tabs on each side of the module by simultaneously pushing each tab away from the RAM.
- ⓘ These tabs lock the module in place and releasing them will cause the module to "pop" up.
- Remove the RAM module from the iMac.

Step 4 — AirPort Card



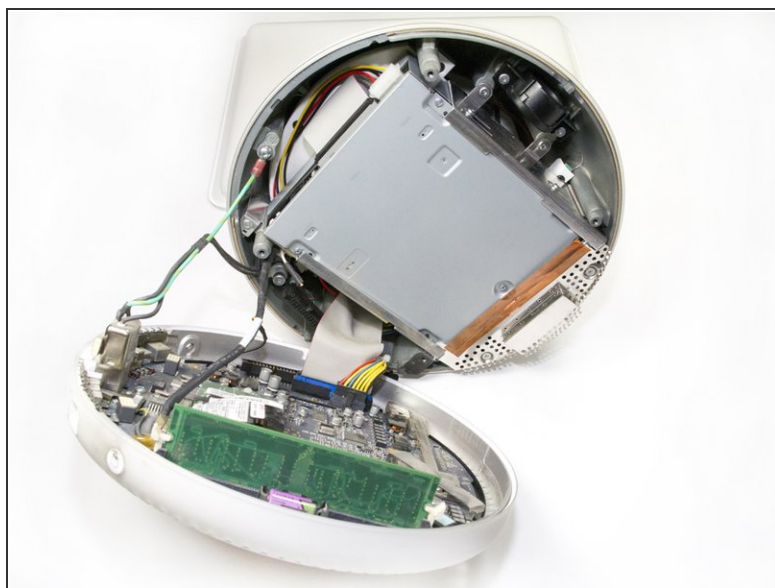
- Use a spudger to lift and remove the AirPort's antenna connector.
- ⓘ This step is only applicable to iMacs that came with an AirPort card installed.

Step 5 — Removing the Lower Case



- Remove the four 28.07mm Torx #15 screws from the lower case.

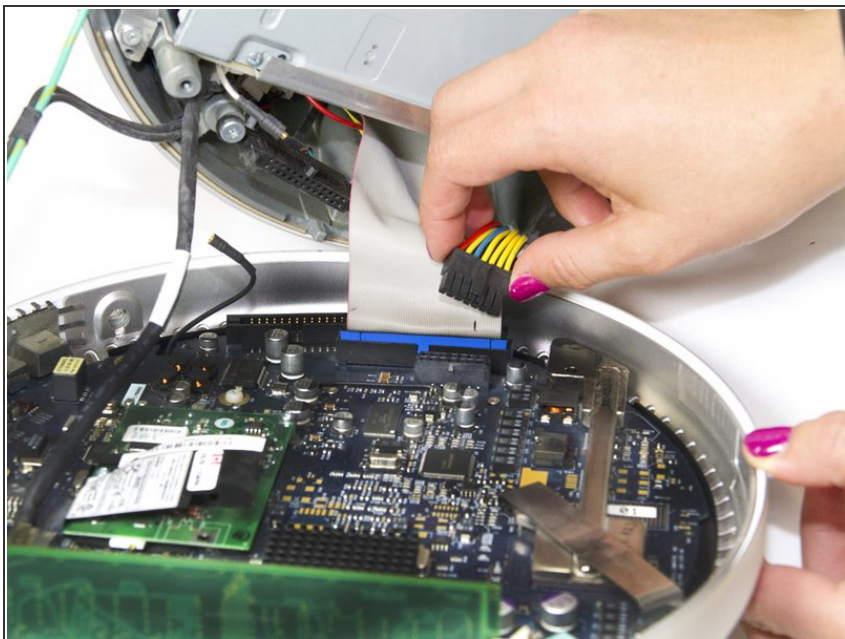
Step 6



- Open the base by carefully pulling straight off, do not rotate the cover.

⚠ Open slowly to ensure that no cables are damaged or disconnected.

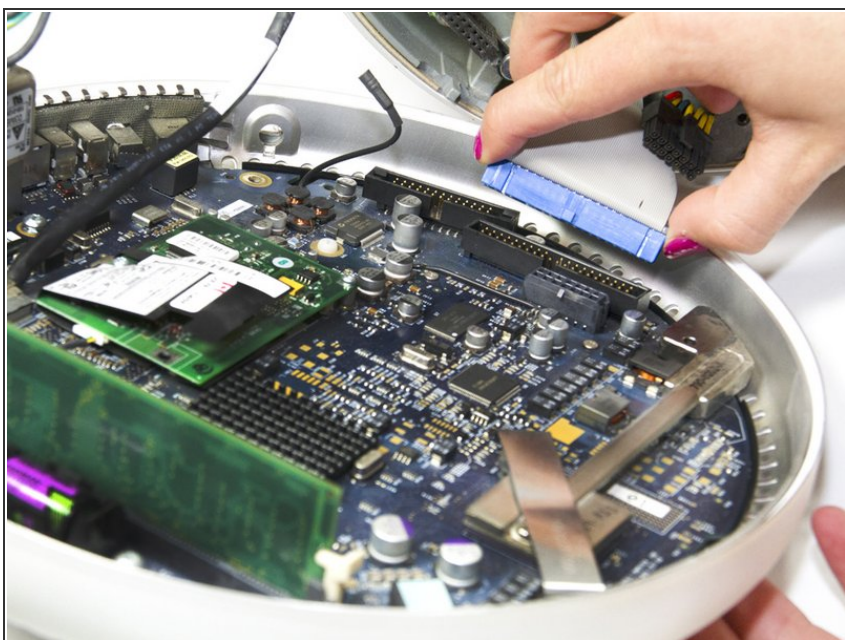
Step 7



- Squeeze the small black tab and wiggle gently to remove the colored power cable.

- ⚠ Do not pull directly on the colored wires.
- ⓘ Do not remove black grounding wire.

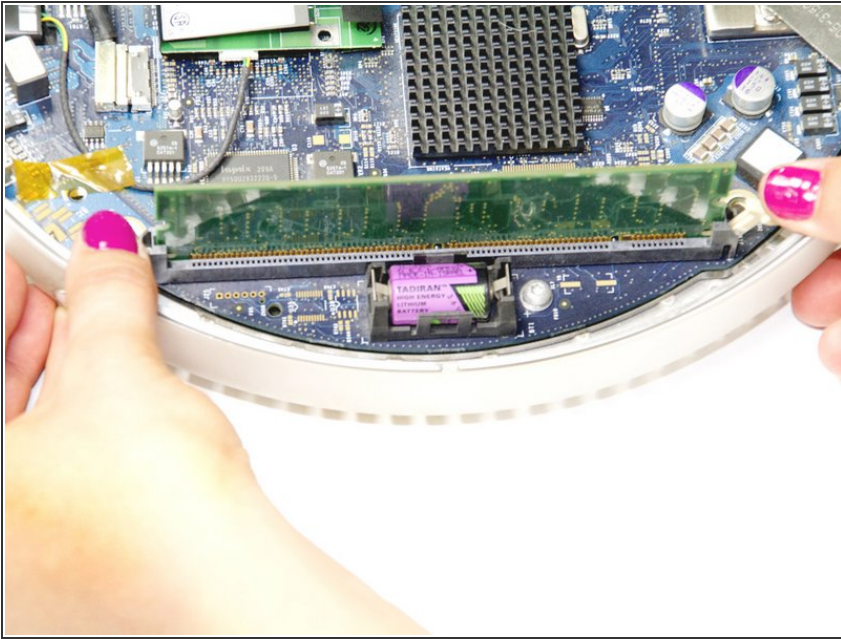
Step 8



- Grab both sides of the blue connector and firmly pull to remove it from the motherboard.

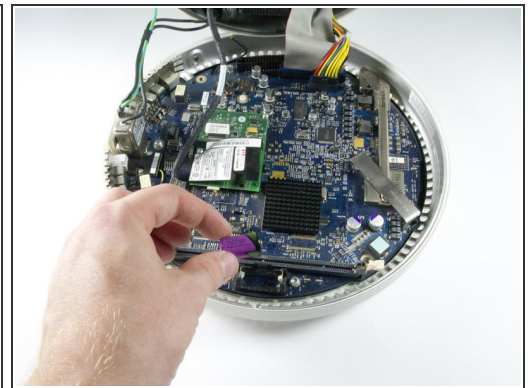
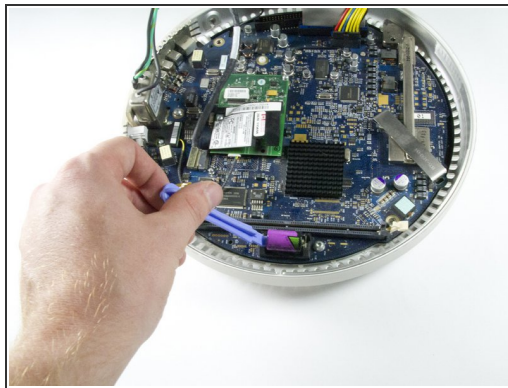
- ⚠ Do not pull directly on the ribbon cable.

Step 9 — Internal RAM



- Release the tabs on each side of the module by pulling them away from the internal RAM
- ⓘ Once the tabs are pulled the module will "pop" out and you can slowly remove it.

Step 10 — PRAM Battery



- Use a spudger to gently pull the side of the battery out of the socket.
- Remove the PRAM battery

To reassemble your device, follow these instructions in reverse order.