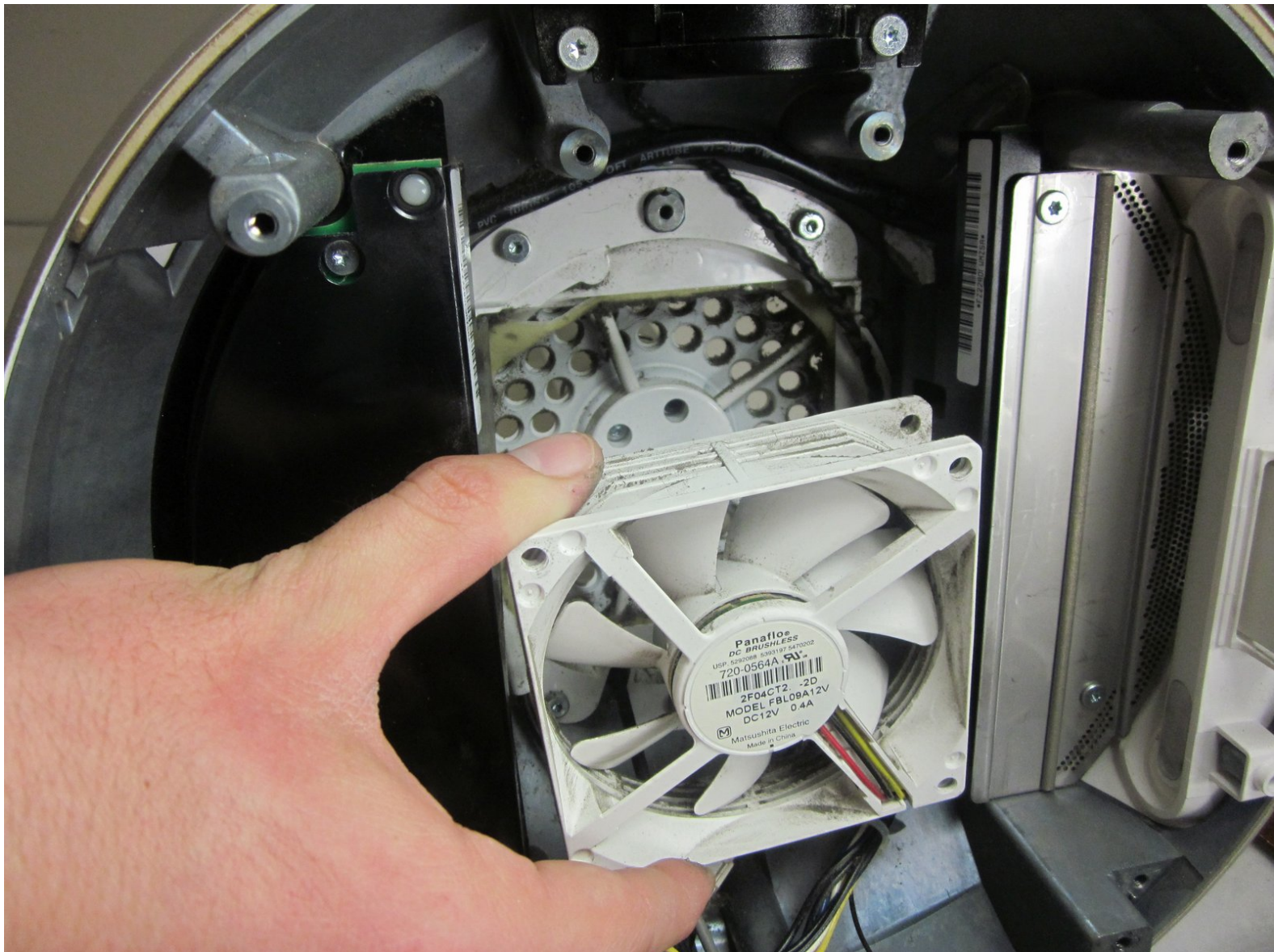




# iMac G4 17 800 MHz EMC 1936 Fan Replacement

Removing the fan from the computer

Written By: David Hunter



---

## INTRODUCTION

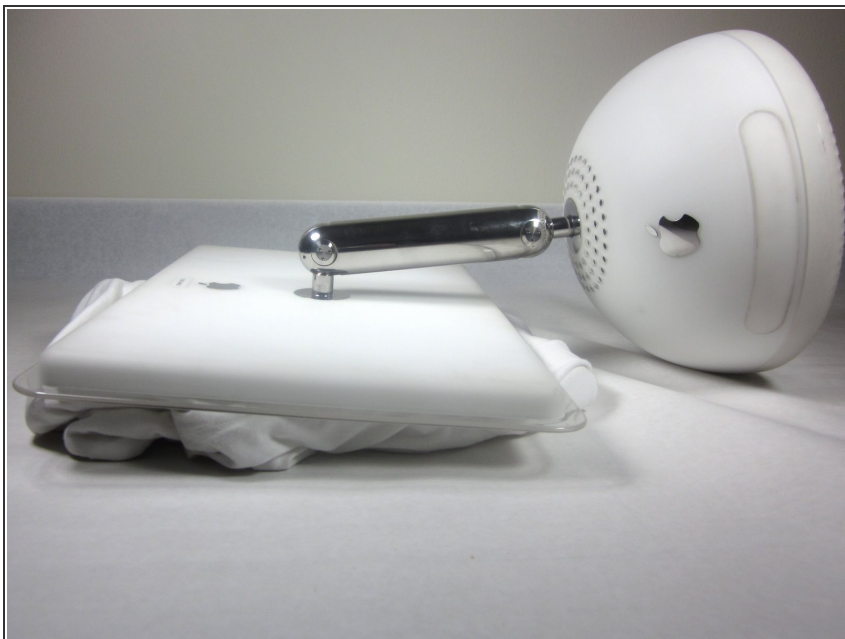
Remove all electrical wires from the computer, and lay the computer flat on its screen. The computer should rest on a smooth, padded surface.

---

### TOOLS:

- [Phillips #0 Screwdriver](#) (1)
  - [TR10 Torx Security Screwdriver](#) (1)
  - [T15 Torx Screwdriver](#) (1)
-

## Step 1 — Bottom Plate



- Unplug all the cables from the computer, including the power cable. Lay the computer face-down, supporting the neck and base with a soft cloth under the screen.

## Step 2



- Loosen the four Phillips #0 screws.

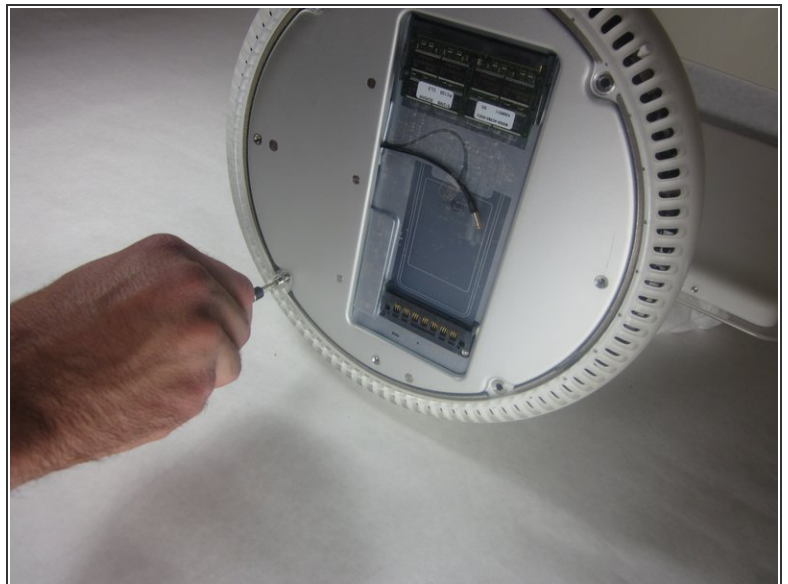


### Step 3



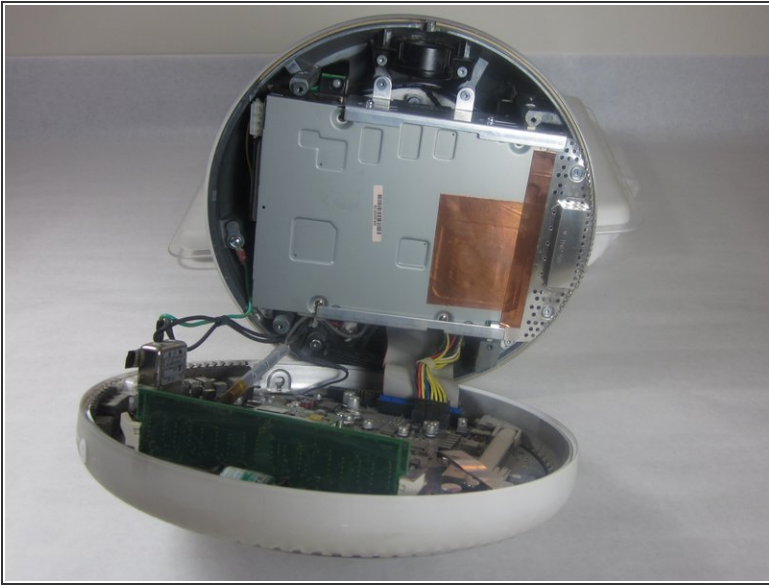
- Carefully remove the base access panel.

### Step 4 — Bottom Plate Housing



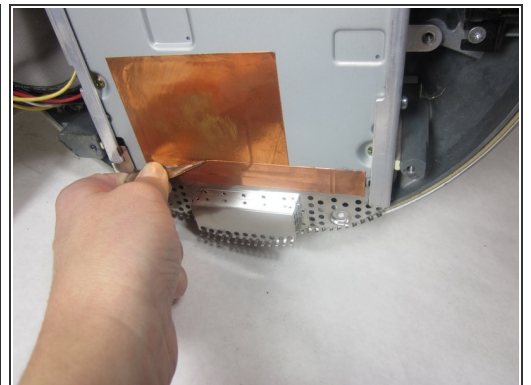
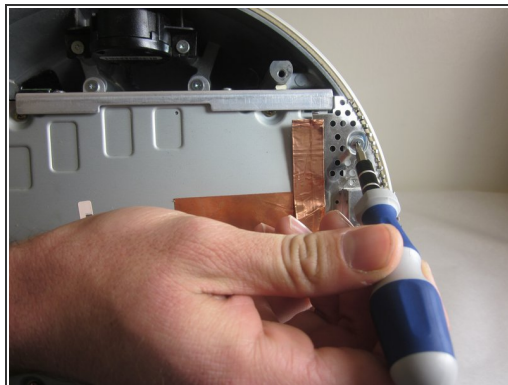
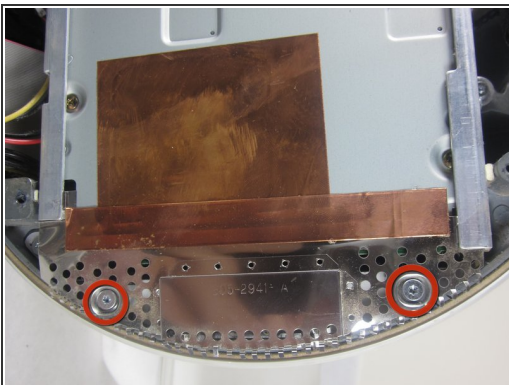
- Remove the four 25mm T-15 screws.

## Step 5



- Open the housing plate.
- ⚠ Be gentle with the wires still connected to the logic board so as not to ruin the cables.
- A fixed plug connector between the logic board and upper unit will cause some resistance. Pull gently but firmly.

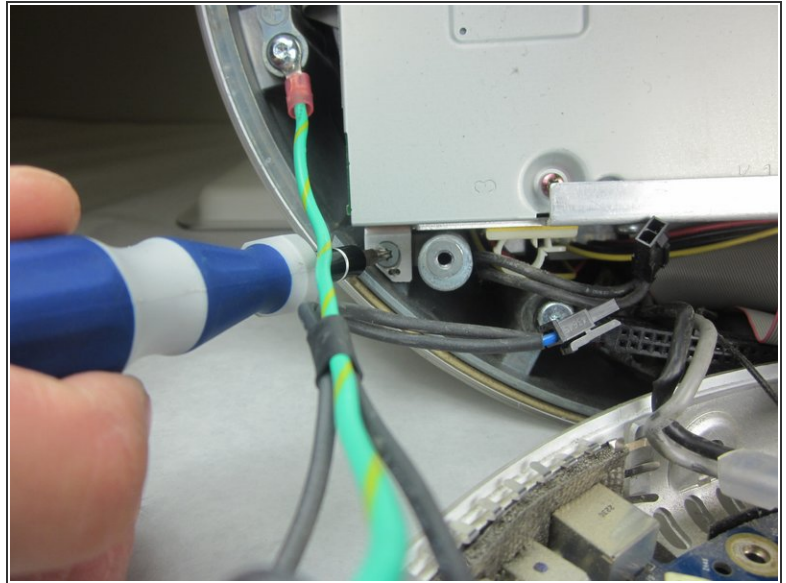
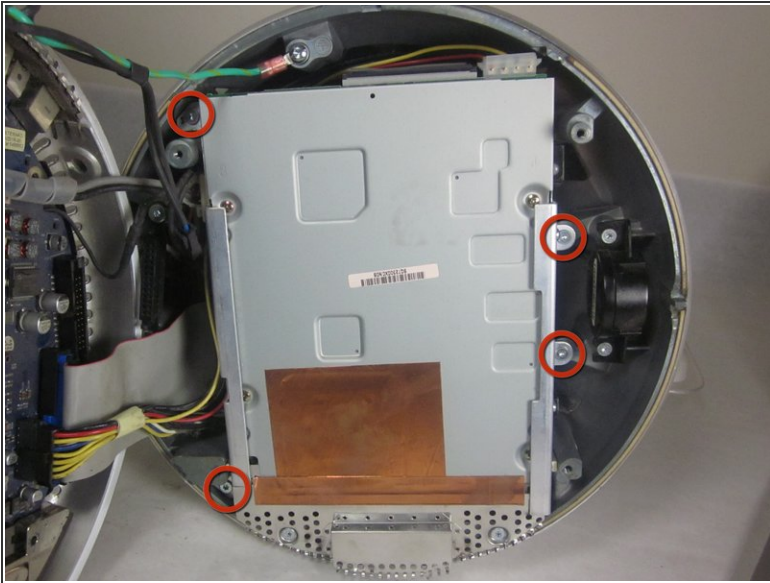
## Step 6 — Drive Carrier Assembly



- Remove the 2 torx 10mm screws on the EMI shield
- Carefully remove shield and copper tape



## Step 7



- Remove the 4 10mm torx screws attached to the drive carrier.

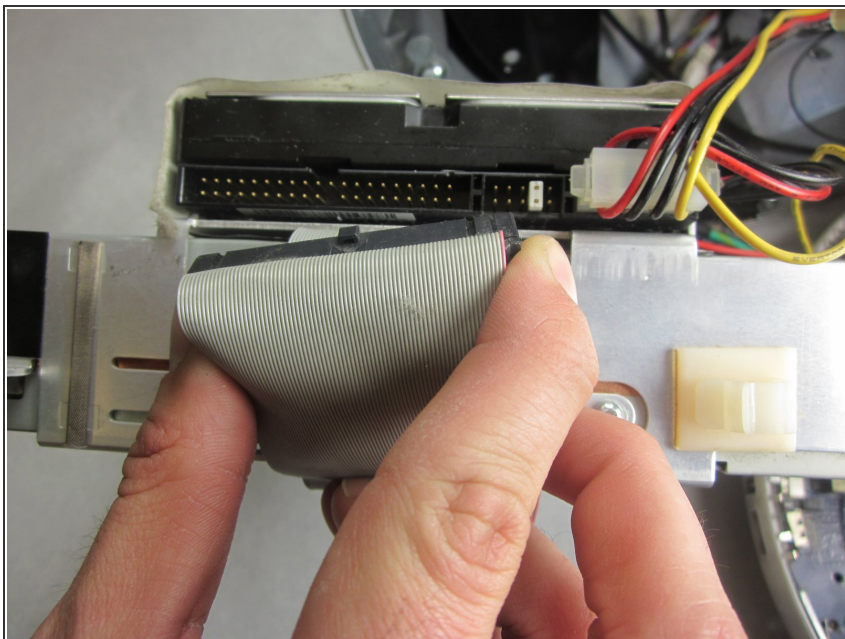
**i** The drive carrier includes optical drive and hard drive.

## Step 8



- Grasp the carrier with both hands on each side.
  - Remove the carrier by lifting up and out.
- i** Pull gently but firmly. The carrier is meant to fit snugly.

## Step 9



- Flip the removed carrier to the right and pull out power cables.

## Step 10 — Hard Drive



- Peel back the white paper, revealing the screws that connect the hard drive to the carrier.
- Remove the 4 T-10 5mm screws connecting the hard drive and frame. (There are 2 screws on each side)

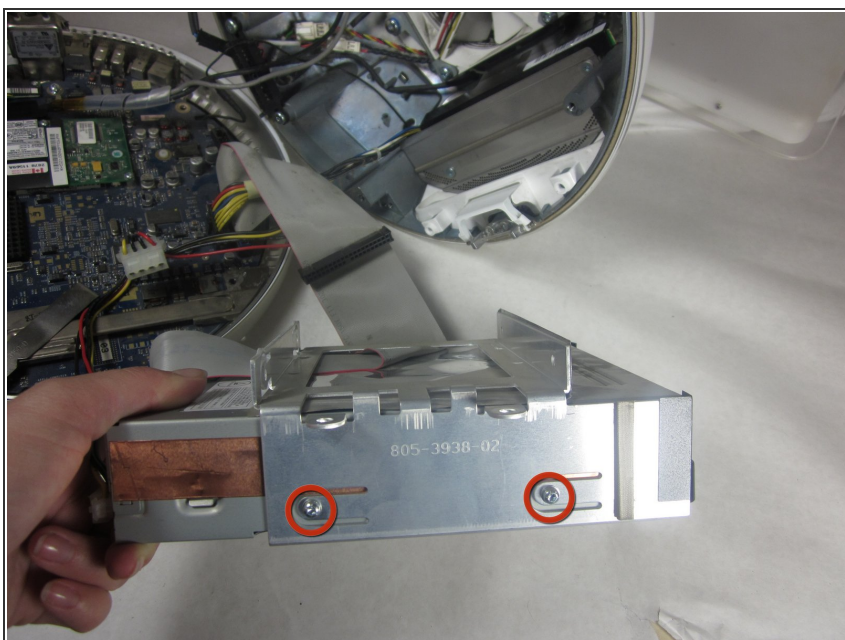


## Step 11



- Slide the hard drive out from the frame and optical drive.

## Step 12 — Optical Drive



- Remove the four T-10 6mm screws at the sides of the drive.

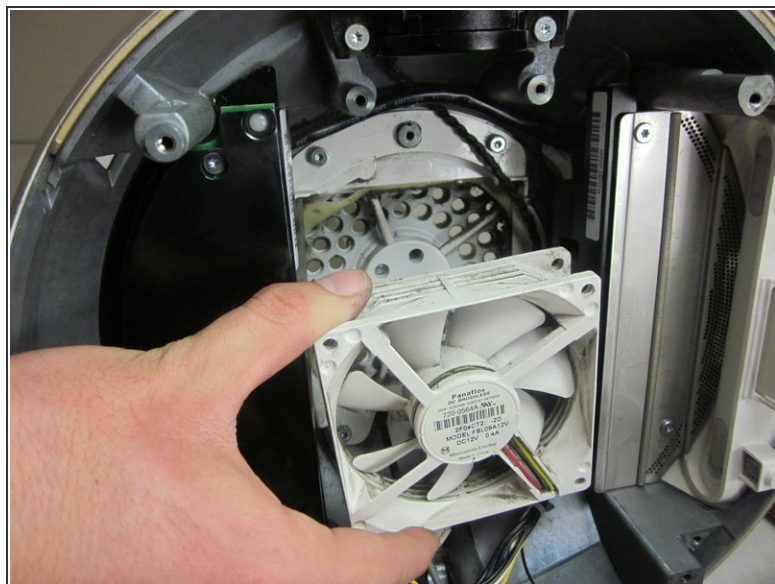
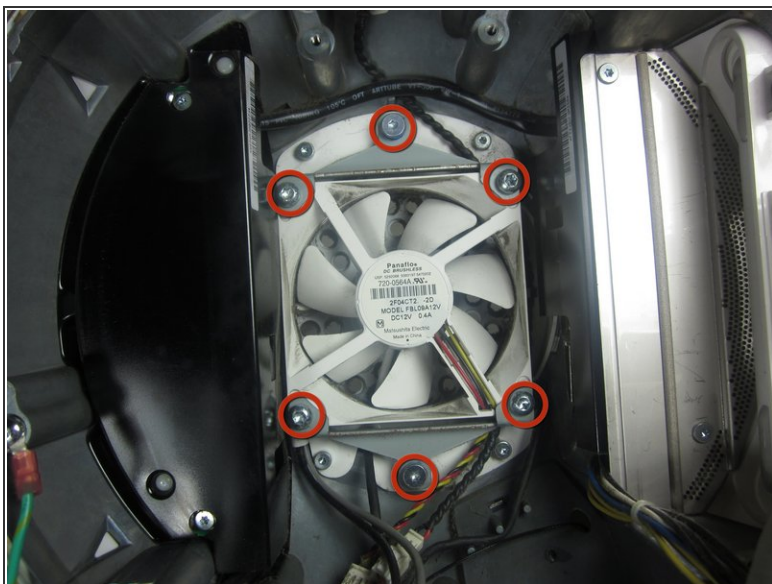


## Step 13



- Slide the optical drive out of the carrier

## Step 14 — Fan



- Take out the six T-15 screws that hold the fan in place, and remove the fan.

To reassemble your device, follow these instructions in reverse order.