



iMac G4 17 800 MHz EMC 1936 LCD Replacement

This guide is a prerequisite for replacing the display or inverter on your iMac G4.

Written By: Austin Krause



INTRODUCTION

This guide gives step-by-step directions for reaching the inner-workings of the display screen of the iMac G4.

TOOLS:

- [Phillips #00 Screwdriver](#) (1)
 - [T10 Torx Screwdriver](#) (1)
 - [1.5mm Hex Screwdriver](#) (1)
-

Step 1 — LCD



- Position the computer so that all three screws on the underside of the display are accessible. This may be upright or laid flat with the screen face down on a soft surface.

⚠ Be careful not to put any stress on the metal arm connecting the base to the display.

Step 2



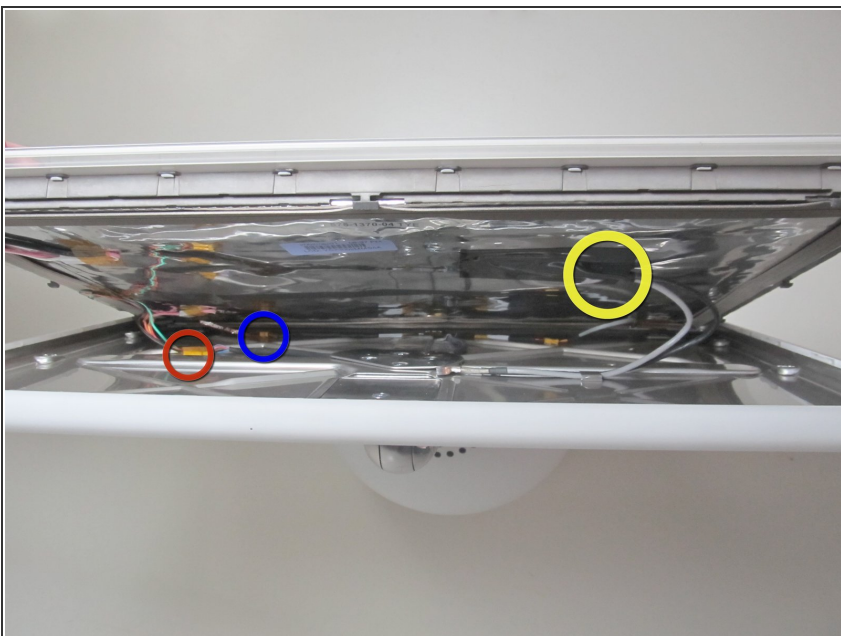
- Unscrew the three underside 1.5 mm hex screws with the tight fitting, hexagonal screw head.
- ☑ Be careful not to lose the screws as they will fall out when unscrewed completely.

Step 3



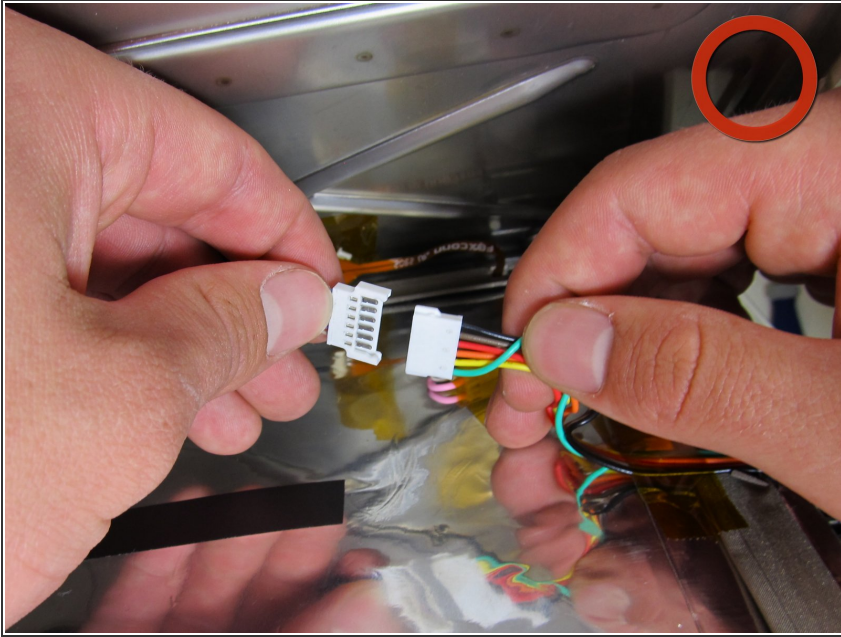
- Separate the front panel of display from base by firmly, but carefully, applying pressure upward. As a result, the two panels should slide apart.
- ⓘ This may be difficult and require more force than expected, but they will disassemble.
- ⚠ Once you feel the front panel beginning to slide upward, be careful not to separate the two sections more than a couple of inches. The two sections are connected by several cords that can easily break.

Step 4



- While the cords are still connected, access the inter-workings of the display from the top.
- The red circle indicates the LED cable.
- The blue circle indicates the inverter cable.
- The yellow circle indicates TMDS connector.

Step 5



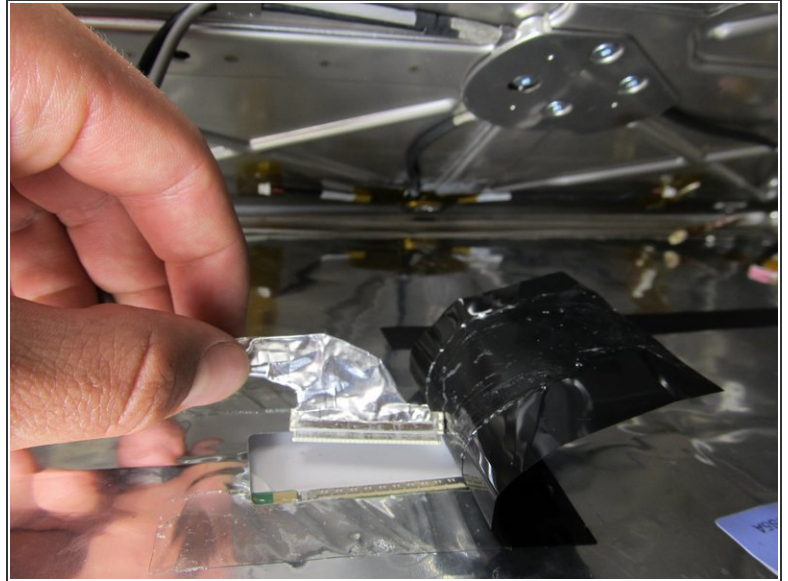
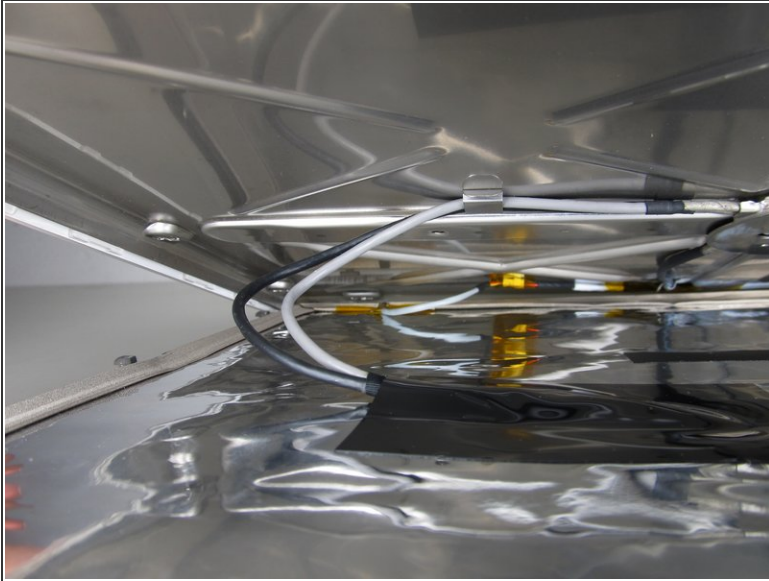
- Disconnect the inverter cable by grasping the chords on each side of the white connection and gently pull your hands away from each other.
- ⓘ There may be a strip of clear yellow tape over white connection. Gently remove it.

Step 6



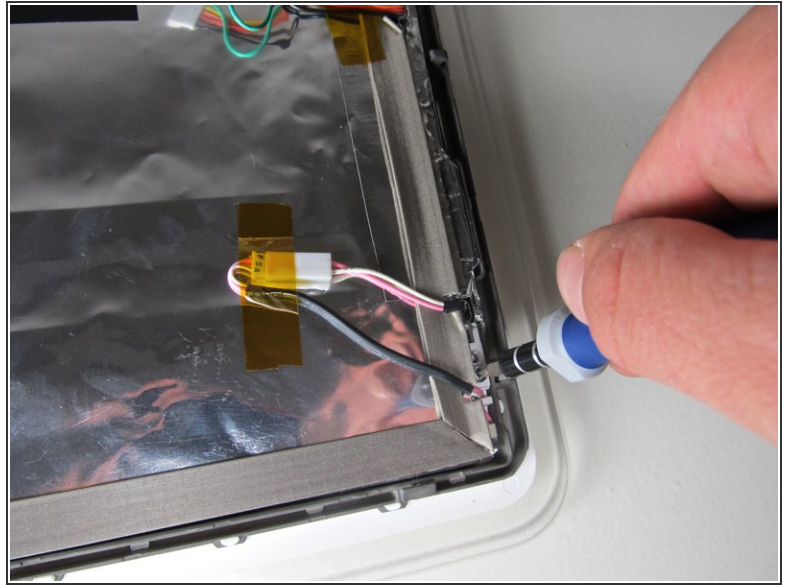
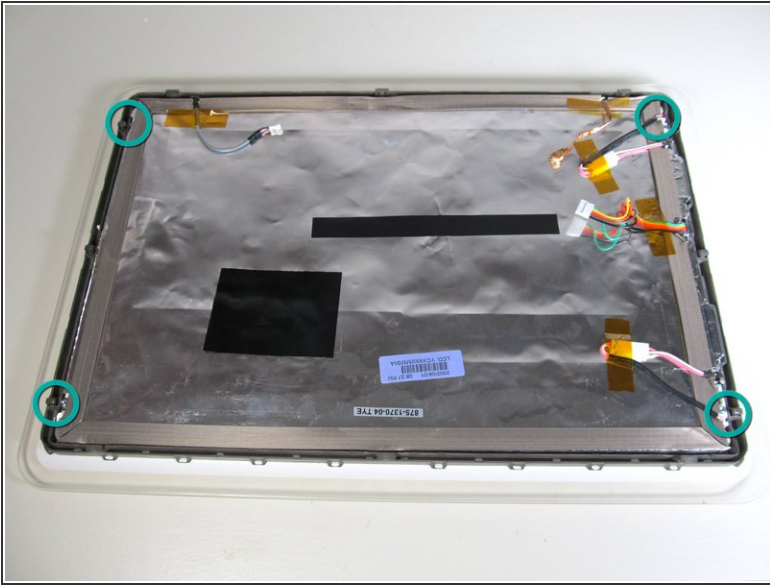
- The next cord to unplug between the two panels of the display is the inverter cable. This will be located under the inverter closer to the bottom of the screen and will have only two cables connecting at a smaller white connection.
- ⓘ Go ahead and remove the yellow tape if it covers this connection.
- Like the inverter cable, grasp each side of the white connection and gently unplug the inverter cable.

Step 7



- The third, and final, cable you will need to unplug is the TMDS connector. This is located under a rectangular strip of black tape that has a gray and black cord coming out of one end.
- Peel back the black tape, starting at the end with the cords protruding out.
- Under the black tape, you will see the gray and black cords going into a connection that looks like it is wrapped in aluminum foil. Grasp that connection and pull carefully in the downward direction toward the bottom of the display.

Step 8



- Now that you have unplugged all of the cables, you can lay the front panel of the display face down on a soft surface.
- Next, you will unscrew the four 5 mm T-10 screws located at the corners of the display.

Step 9



- Once the four screws are removed, the display is ready to be removed and the inverter is accessible.

To reassemble your device, follow these instructions in reverse order.