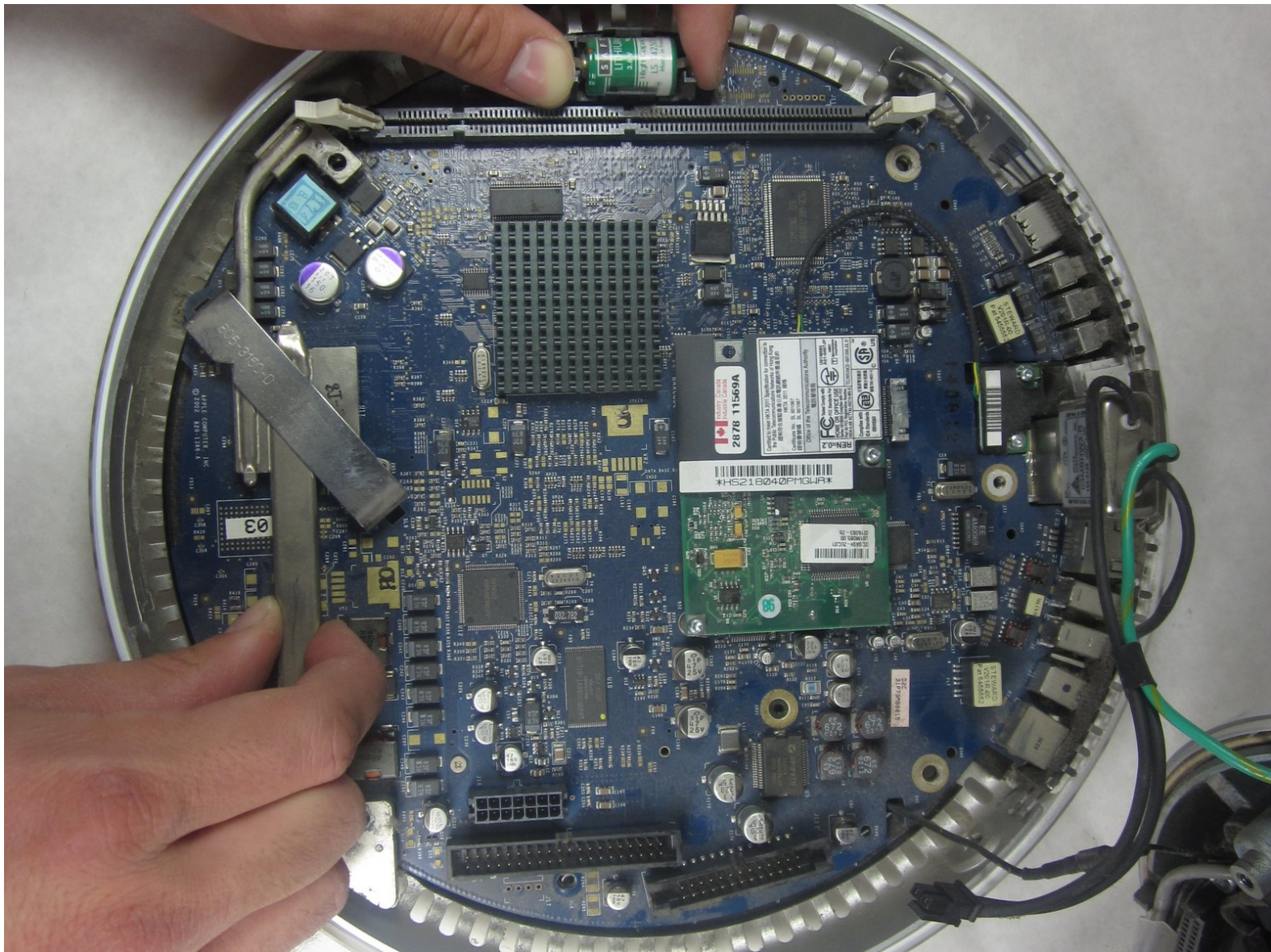




iMac G4 17 800 MHz EMC 1936 Logic Board Assembly Replacement

Removing or Replacing logic board on a 17 inch iMac G4.

Written By: Justin



INTRODUCTION

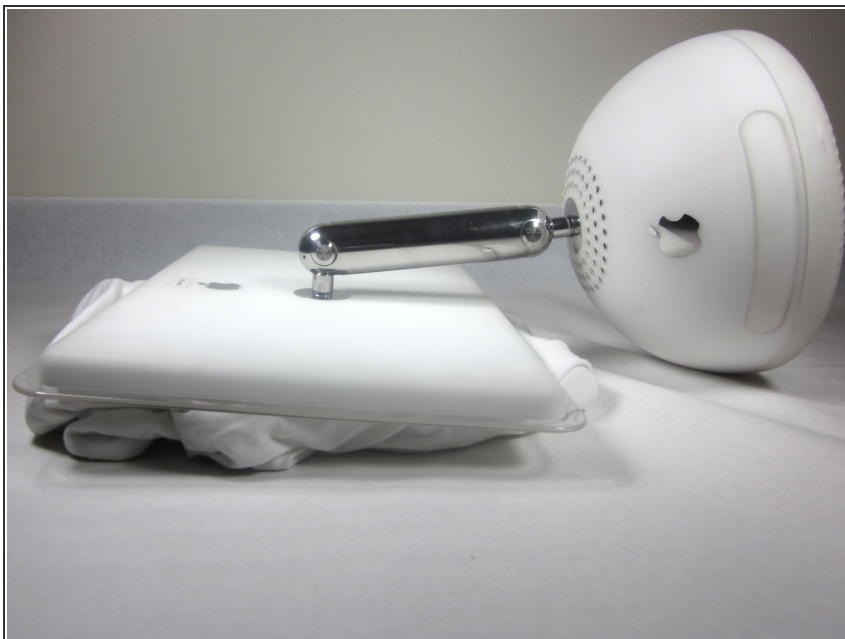
Removing the logic board assembly to replace it with a new one.



TOOLS:

- [Phillips #0 Screwdriver](#) (1)
 - [T15 Torx Screwdriver](#) (1)
-

Step 1 — Bottom Plate



- Unplug all the cables from the computer, including the power cable. Lay the computer face-down, supporting the neck and base with a soft cloth under the screen.

Step 2



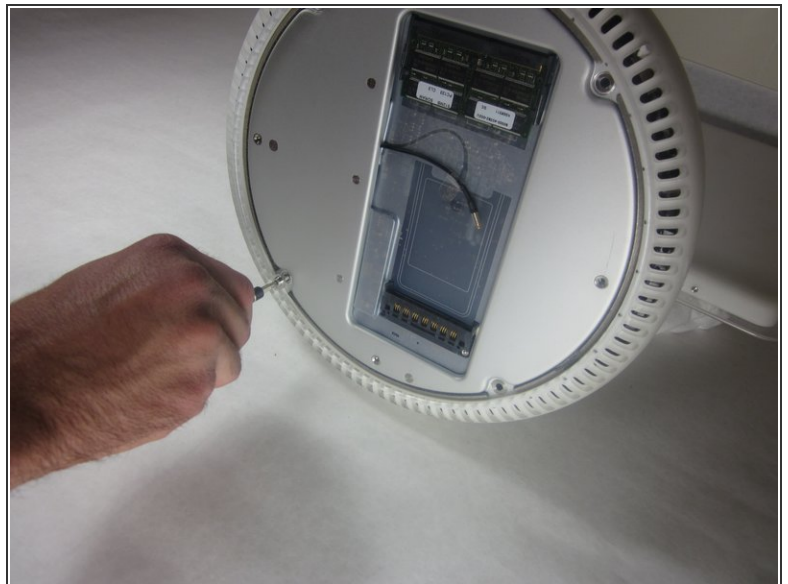
- Loosen the four Phillips #0 screws.

Step 3



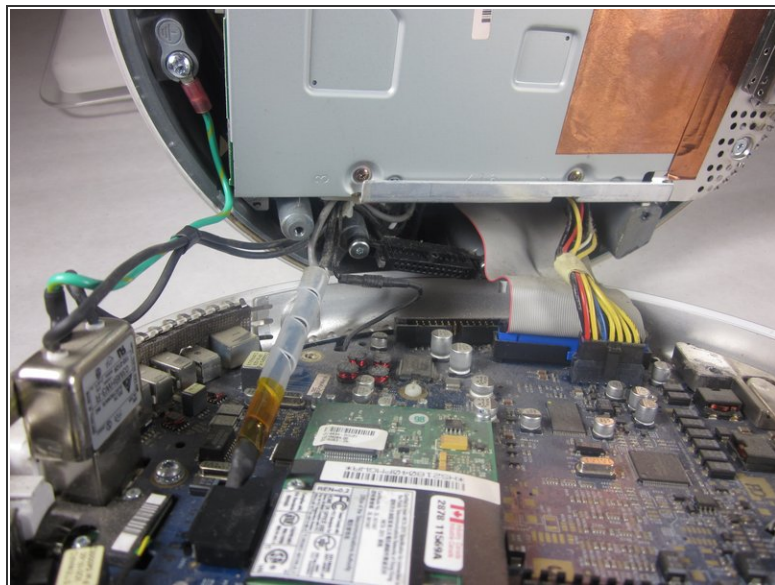
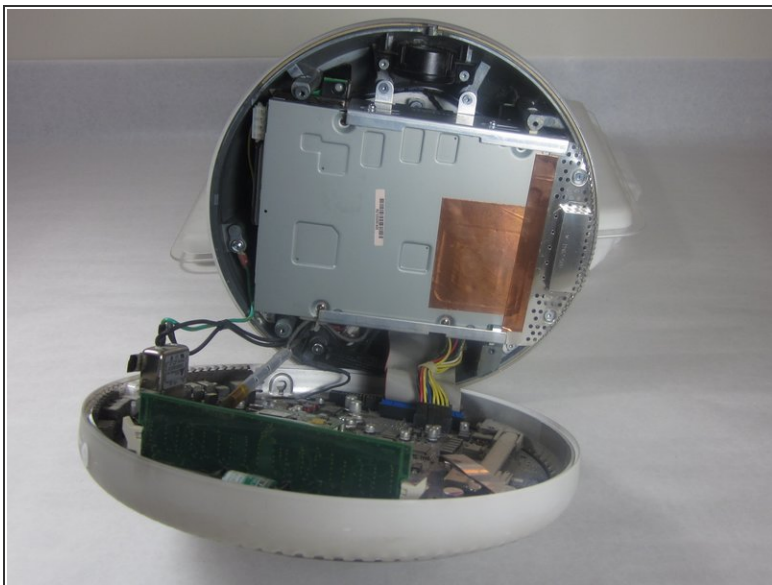
- Carefully remove the base access panel.

Step 4 — Bottom Plate Housing



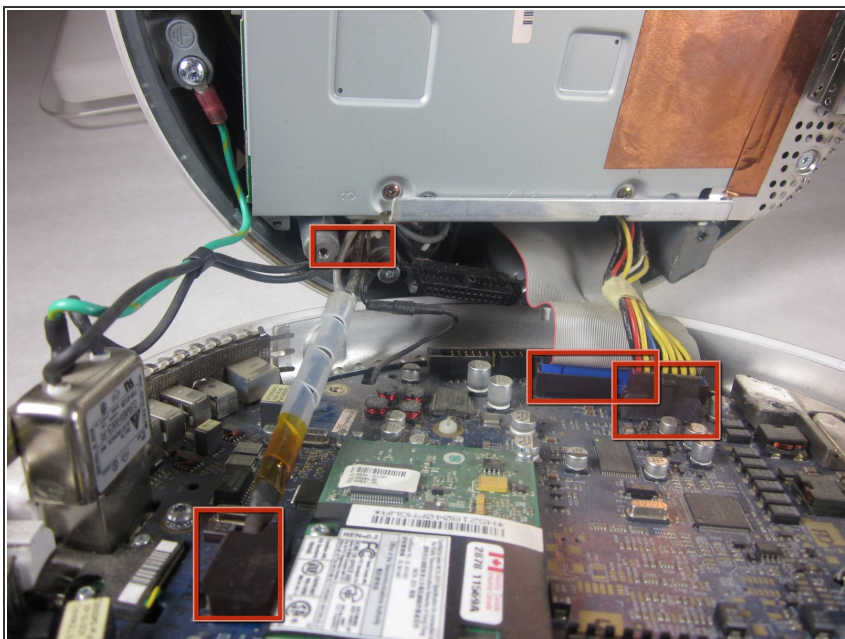
- Remove the four 25mm T-15 screws.

Step 5



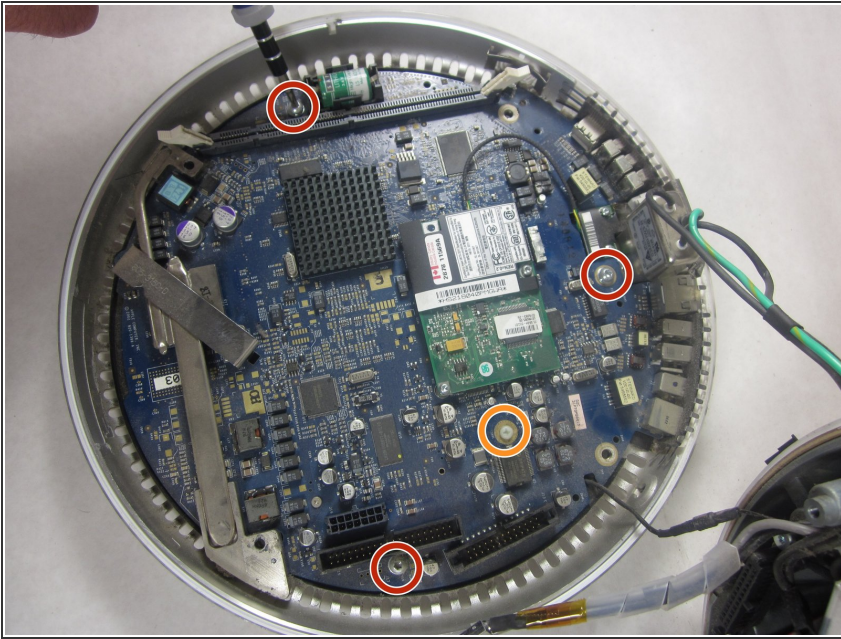
- Open the housing plate.
- ⚠ Be gentle with the wires still connected to the logic board so as not to ruin the cables.
- A fixed plug connector between the logic board and upper unit will cause some resistance. Pull gently but firmly.

Step 6 — Logic Board Assembly



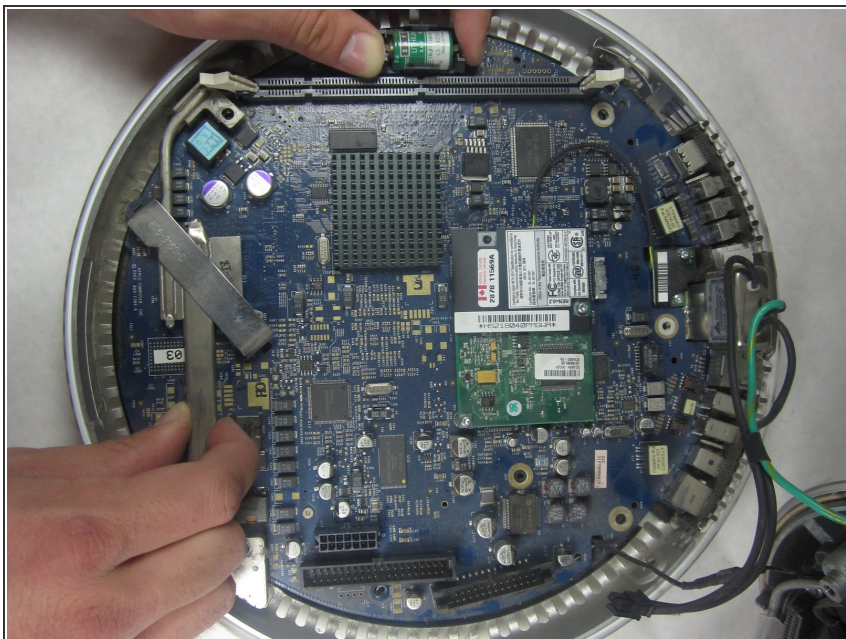
- Gently remove the cables marked in red.

Step 7



- Remove the three metal 10mm T-15 screws.
- Remove the one nylon 10mm T-15 screw.

Step 8



- Using thumbs and forefingers, firmly grasp the battery holder in one hand while grasping the metal bar in the other. Gently lift and pull the logic board to release it.

To reassemble your device, follow these instructions in reverse order.