



iMac G4 Screen Replacement

This guide gives information on installing a new display into the iMac G4. If your screen is cracked or broken, or your display is not working, while the rest of the computer still seems to be functioning, this guide will help you replace it.

Written By: Austin Krause



INTRODUCTION

This guide shows will help you install a new display into your iMac G4. You can purchase such display from iFixit, other websites online, or possibly a local business in your area. You will also need a screwdriver, size 00 with a Phillips and a hexagonal attachment.

TOOLS:

- [1.5mm Hex Screwdriver](#) (1)
 - [Phillips #00 Screwdriver](#) (1)
 - [T10 Torx Screwdriver](#) (1)
-

Step 1 — LCD



- Position the computer so that all three screws on the underside of the display are accessible. This may be upright or laid flat with the screen face down on a soft surface.

⚠ Be careful not to put any stress on the metal arm connecting the base to the display.

Step 2



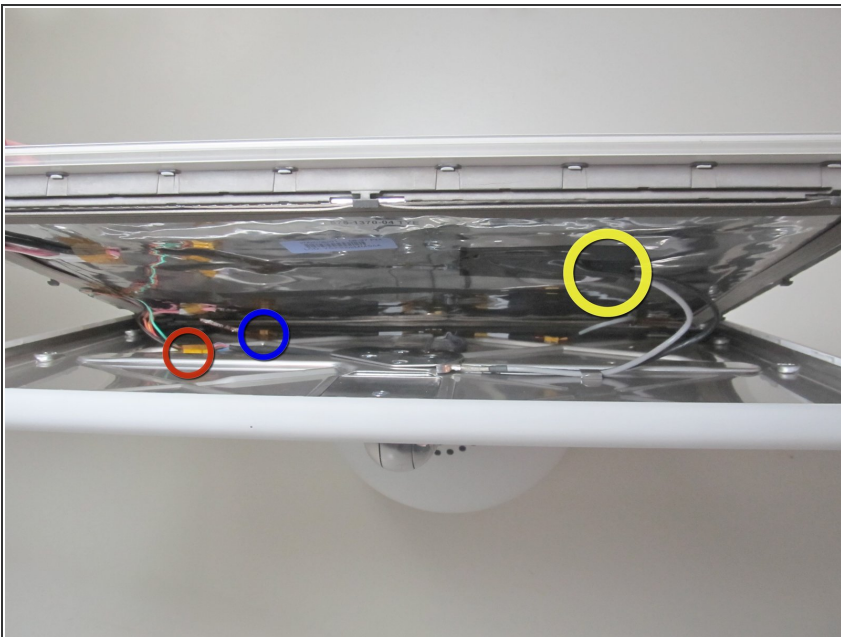
- Unscrew the three underside 1.5 mm hex screws with the tight fitting, hexagonal screw head.
- ☑ Be careful not to lose the screws as they will fall out when unscrewed completely.

Step 3



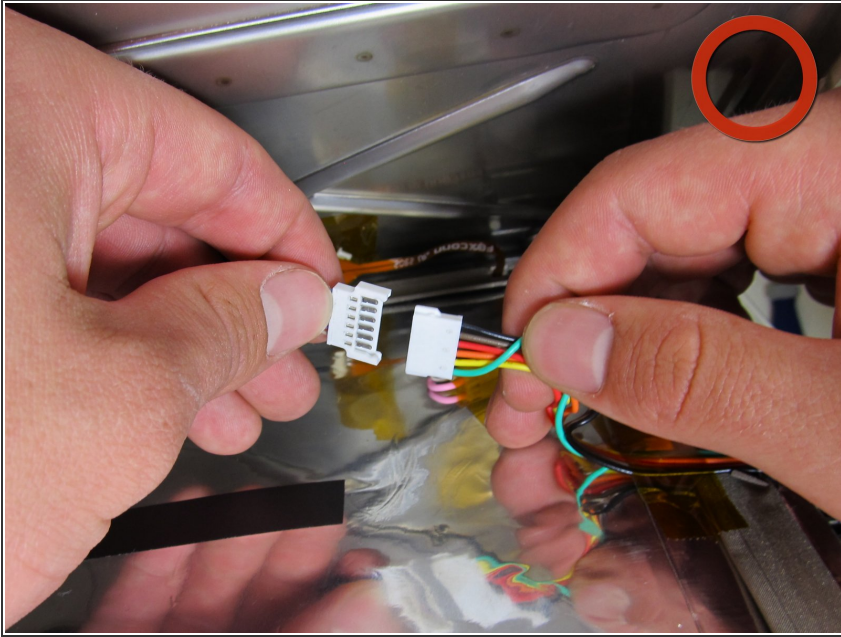
- Separate the front panel of display from base by firmly, but carefully, applying pressure upward. As a result, the two panels should slide apart.
- ⓘ This may be difficult and require more force than expected, but they will disassemble.
- ⚠ Once you feel the front panel beginning to slide upward, be careful not to separate the two sections more than a couple of inches. The two sections are connected by several cords that can easily break.

Step 4



- While the cords are still connected, access the inter-workings of the display from the top.
- The red circle indicates the LED cable.
- The blue circle indicates the inverter cable.
- The yellow circle indicates TMDS connector.

Step 5



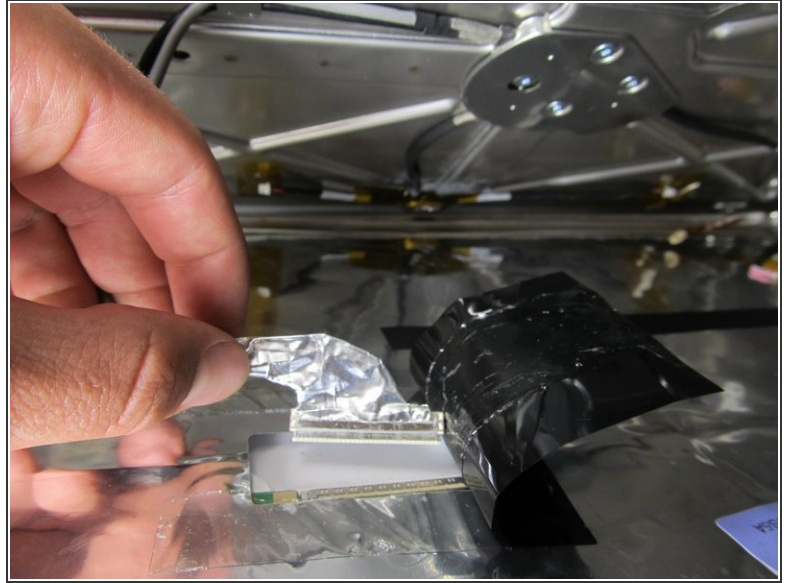
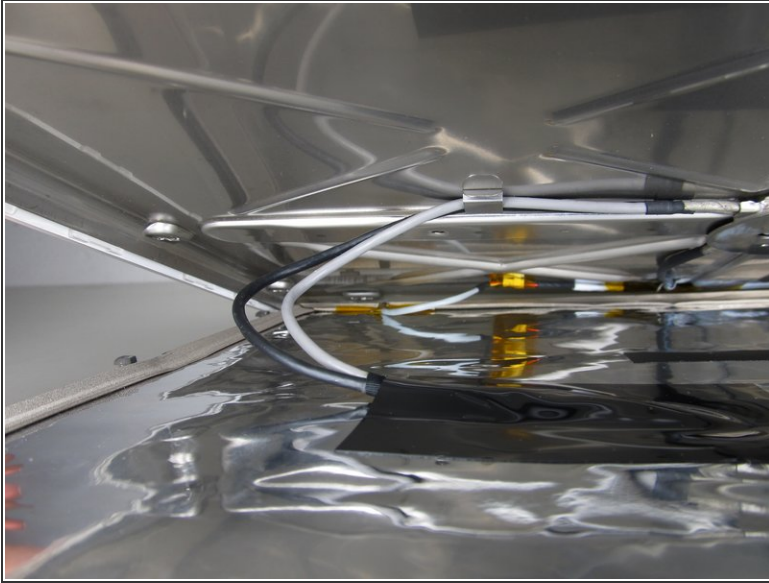
- Disconnect the inverter cable by grasping the chords on each side of the white connection and gently pull your hands away from each other.
- ⓘ There may be a strip of clear yellow tape over white connection. Gently remove it.

Step 6



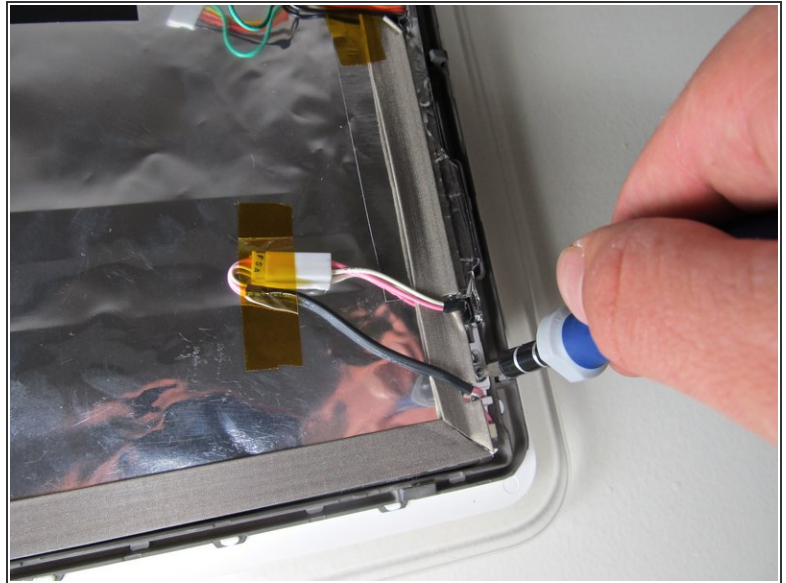
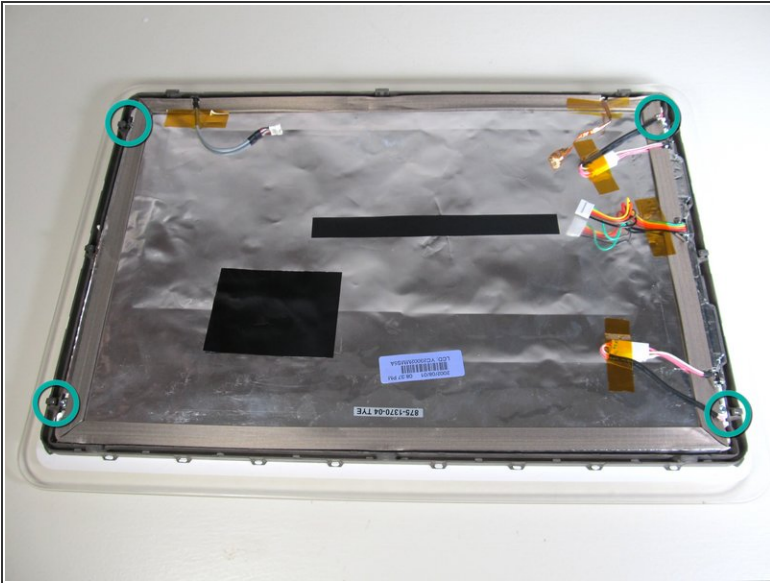
- The next cord to unplug between the two panels of the display is the inverter cable. This will be located under the inverter closer to the bottom of the screen and will have only two cables connecting at a smaller white connection.
- ⓘ Go ahead and remove the yellow tape if it covers this connection.
- Like the inverter cable, grasp each side of the white connection and gently unplug the inverter cable.

Step 7



- The third, and final, cable you will need to unplug is the TMDS connector. This is located under a rectangular strip of black tape that has a gray and black cord coming out of one end.
- Peel back the black tape, starting at the end with the cords protruding out.
- Under the black tape, you will see the gray and black cords going into a connection that looks like it is wrapped in aluminum foil. Grasp that connection and pull carefully in the downward direction toward the bottom of the display.

Step 8



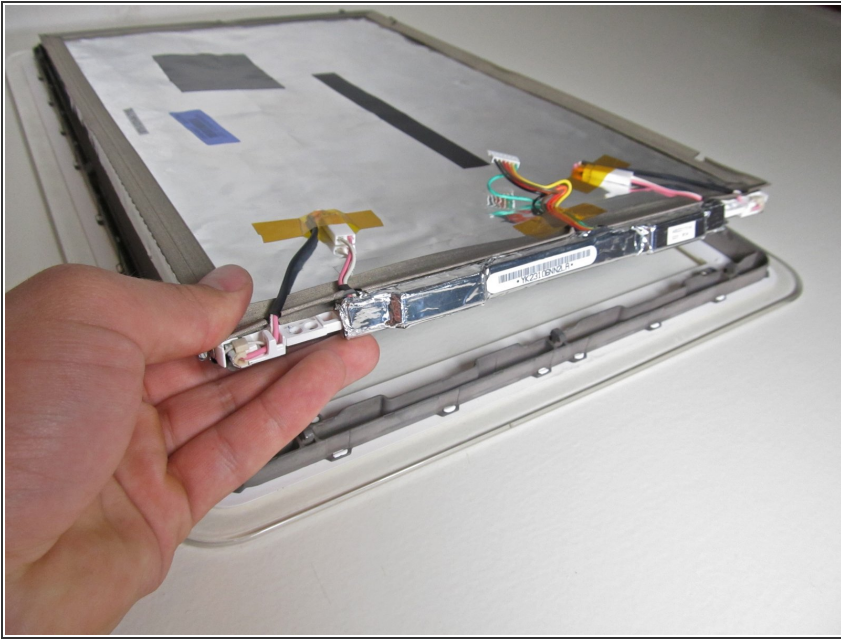
- Now that you have unplugged all of the cables, you can lay the front panel of the display face down on a soft surface.
- Next, you will unscrew the four 5 mm T-10 screws located at the corners of the display.

Step 9



- Once the four screws are removed, the display is ready to be removed and the inverter is accessible.

Step 10 — Screen



- Remove old display from frame and place new display with same exact orientation as the old.
- ★ Before you place the new display in the frame, you will need to install the new display shield and EMI gasket that are included with the new LCD panel. Directions for completing these tasks will be included with your new display.

To reassemble your device, follow these instructions in reverse order.