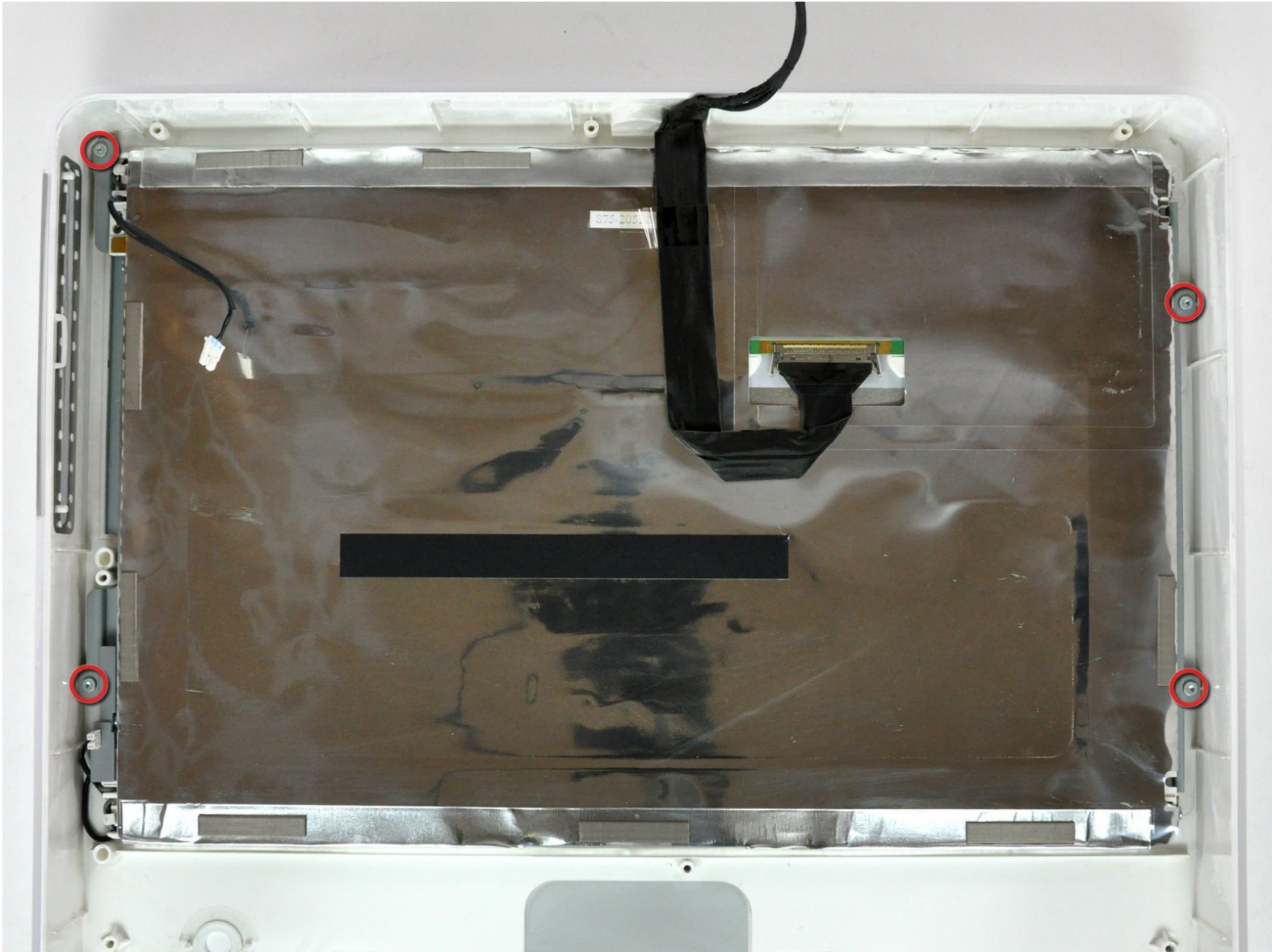




iMac G5 17" Model A1058 Display Replacement

Written By: Walter Galan



INTRODUCTION

Replace the display in your iMac.



TOOLS:

- [Phillips #1 Screwdriver](#) (1)
- [Spudger](#) (1)
- [T10 Torx Screwdriver](#) (1)



PARTS:

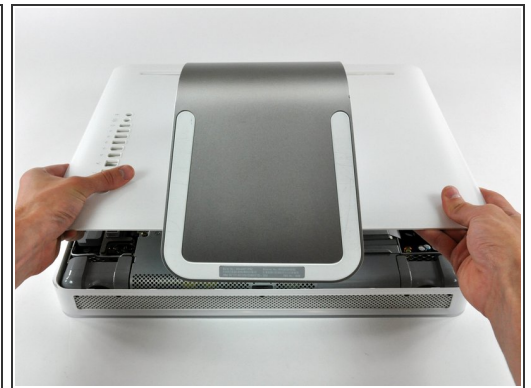
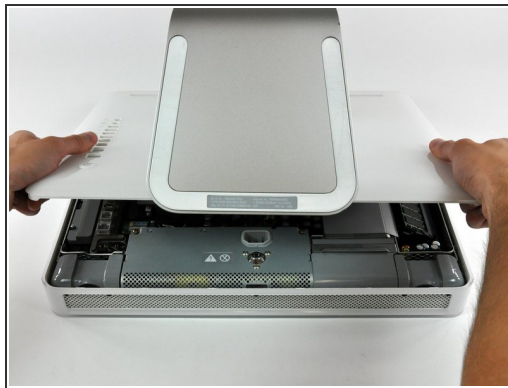
- [iMac G5 17" \(EMC No. 1989\) LCD Assembly](#) (1)

Step 1 — Rear Panel



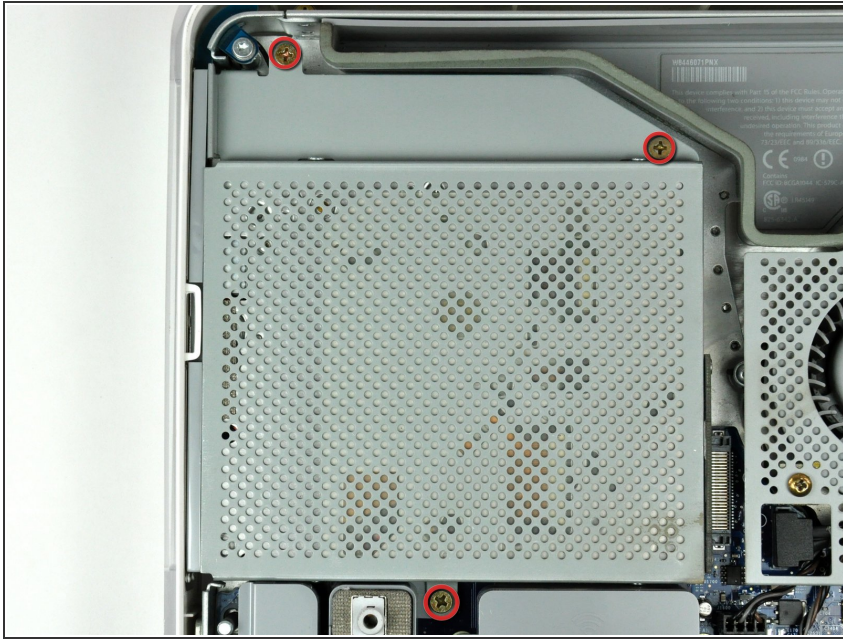
- Lay the iMac display-side down on a flat surface.
 - Loosen the three Phillips screws securing the rear panel to the iMac.
- ⚠ These screws are captive in the iMac. The center screw will stop turning after about 3.5 turns and the outer screws will stop turning after about 5.5 turns. Do not try to remove these screws from your iMac.

Step 2



- Lift the rear panel slightly from the bottom edge of the iMac.
- Pull the rear panel toward yourself and remove it from the iMac.

Step 3 — Optical Drive



- Remove the three 8 mm brass Phillips screws securing the optical drive to the midplane.

Step 4



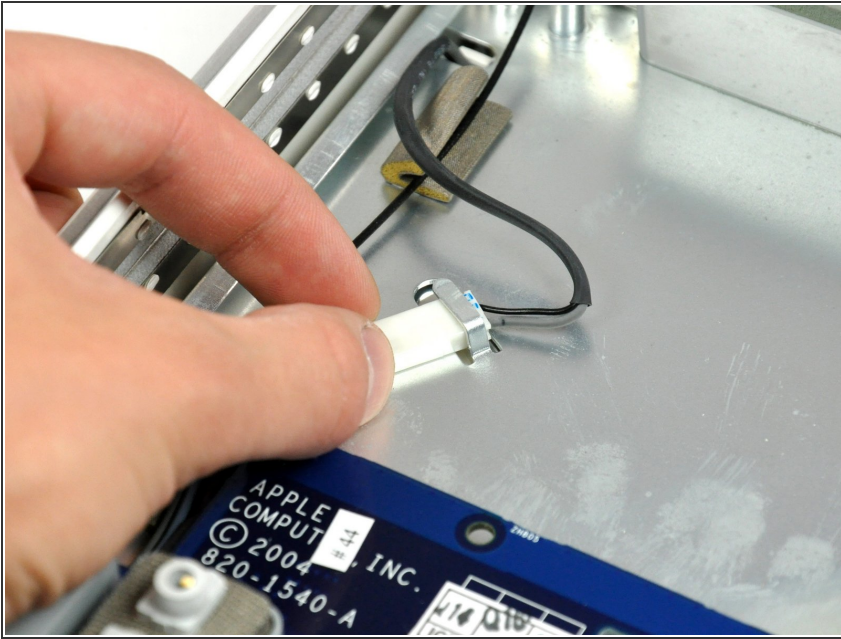
- Lift the optical drive near the connector to separate it from the logic board.

⚠ Lift the free end of the optical drive just enough to clear the fan cover. Lifting the free end of the optical drive too far may break the plastic positioning pins off the front bezel.

- Lift the free end of the optical drive slightly, then pull it away from the edge of the rear case to clear the two plastic positioning pins.
- Lift the optical drive out of your iMac.

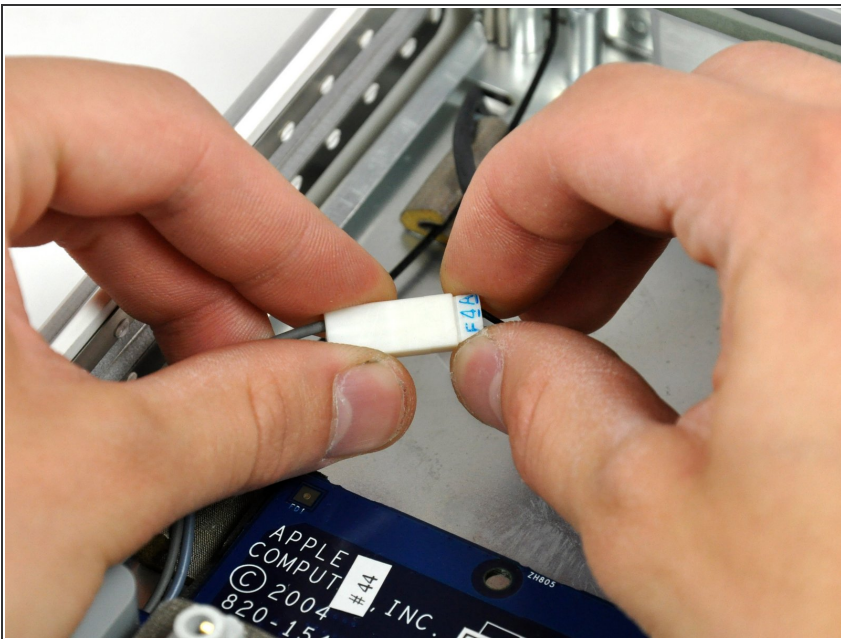
★ When reinstalling your optical drive it may be necessary to set the bezel attached to the open end of the drive on the plastic positioning pins molded into the front bezel of the iMac and pull the connector side of the drive toward the edge of the rear case, bending it outward slightly, to properly seat the connector.

Step 5 — Inverter



- Slide the inverter-to-display cable connector from under the metal clip on the midplane.

Step 6



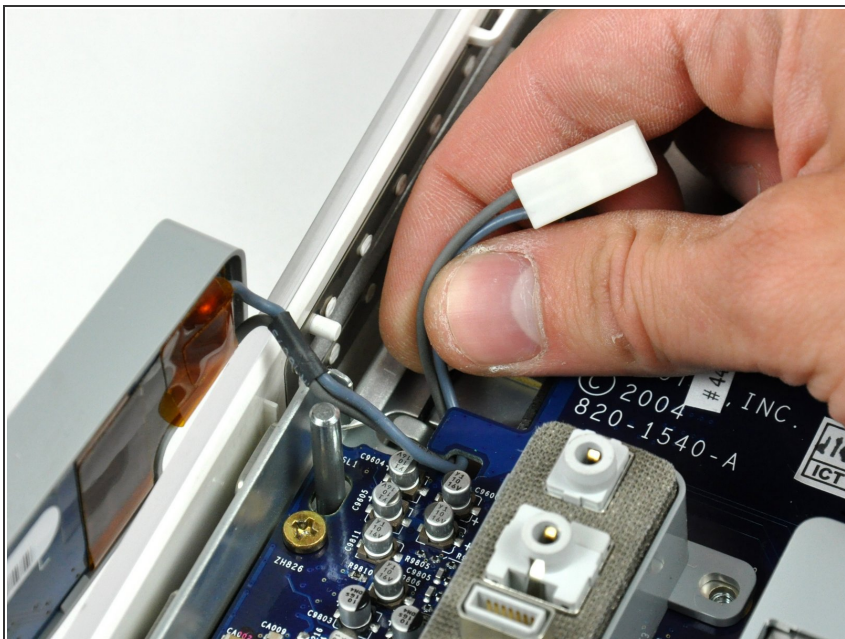
- Disconnect the inverter-to-display cable connector by pulling it straight away from its socket.

Step 7



- Remove the single Phillips screw securing the inverter to the logic board.
 - Lift the inverter straight up off the pins on the logic board.
- i** Be sure to lift the inverter straight up off the logic board, as the connector pins are very long and easily bent. If the pins bend during removal, use the connector on the inverter as a guide to bend them straight.

Step 8



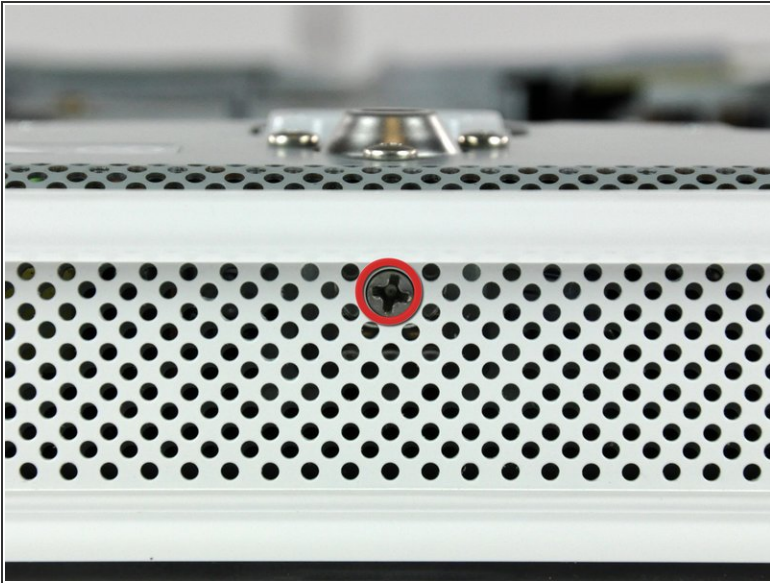
- De-route the inverter cable connector from the channel in the logic board.

Step 9



- Disconnect the inverter cable from the logic board by pulling it straight up from its socket.
- ★ Replacement note: it may be helpful to carefully reattach this connector before seating the midplane assembly, making sure the connector safely passes through the hole in the midplane assembly.



Step 10 — Power Supply



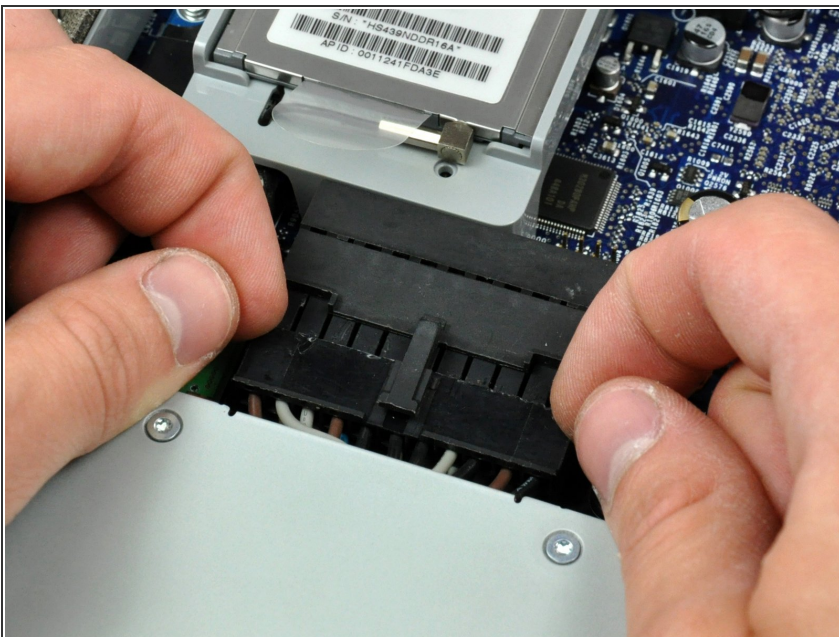
- Rotate the center Phillips screw on the bottom of the iMac clockwise until the rear panel clamp contacts the edge of the case.
- ⓘ On our specific machine, the threaded portion of the clamp broke off the clamp body causing the center screw to turn without moving the bracket. If your machine is broken like ours, skip to the next step.

Step 11



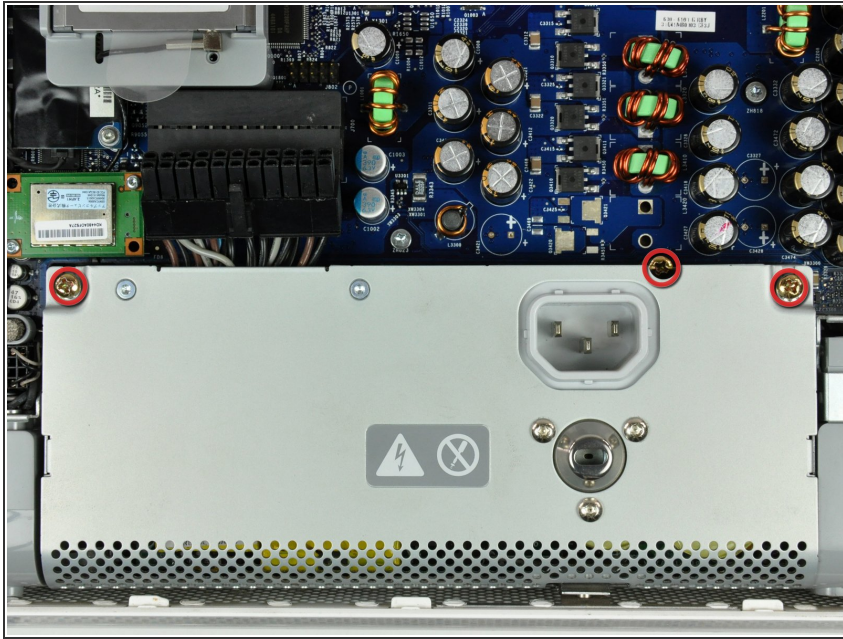
- While depressing the connector lock, insert the flat end of a heavy duty spudger into the gap between the power supply connector and its socket.
 - Twist the heavy duty spudger to slightly separate the connector from its socket.
-  It will be necessary to work from alternate sides until the connector is free.
-  Your power supply may have an ambient light sensor cable attached from the power supply to the logic board. If so, carefully use a spudger to push out the cable towards you using the sides of the cable alternatively to help you slide it out.

Step 12



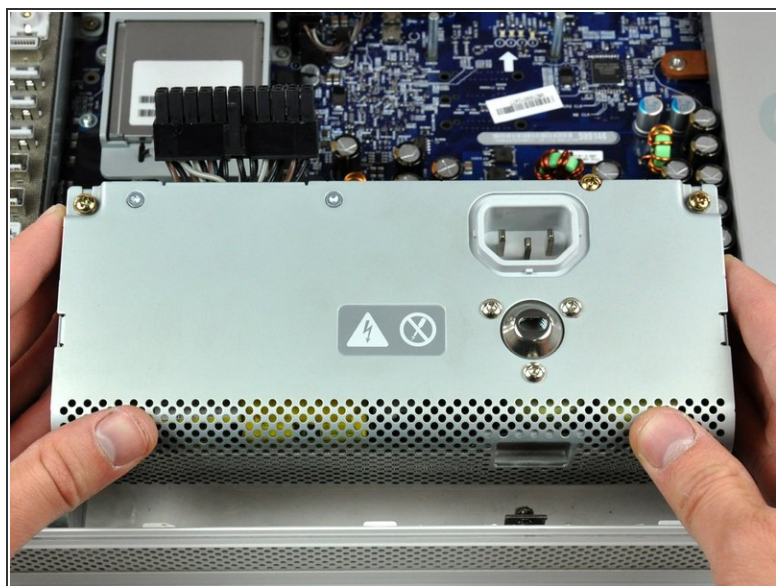
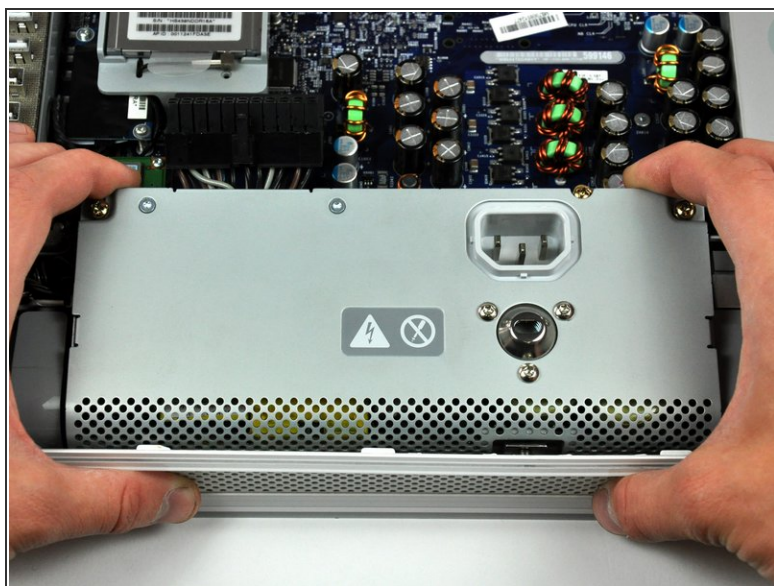
- Pull the power supply connector straight away from its socket on the logic board.
- This step is very simple if you remove the power supply first.


Step 13




- Remove the three Phillips screws securing the power supply to the chassis.
- ⓘ All three screws are captive in the power supply.
- ⓘ To aid in removal, it may be helpful to lift the center screw slightly away from the midplane.

Step 14

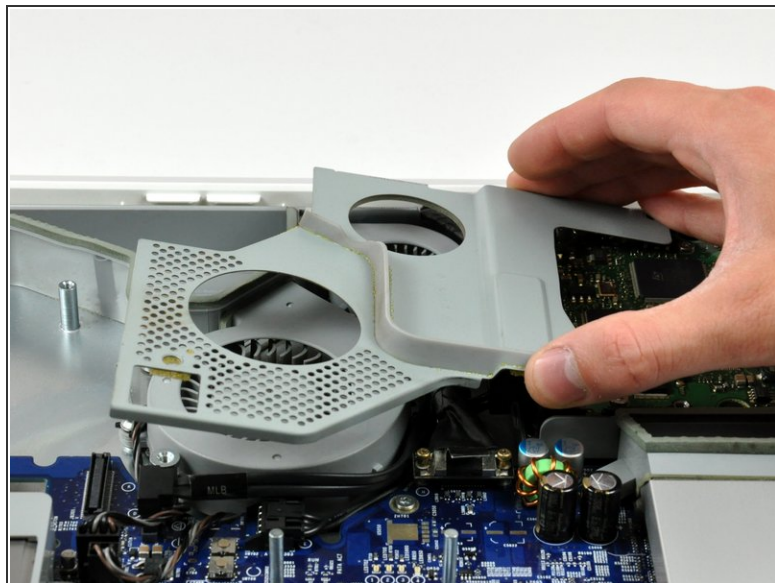


 There are several capacitors mounted to the logic board in close proximity to the power supply. Try not to disturb them, as they are delicate and may break off the board.

- Grab the power supply from each side and rotate its top edge toward yourself until it clears the logic board.
- Lift the power supply out of the midplane.

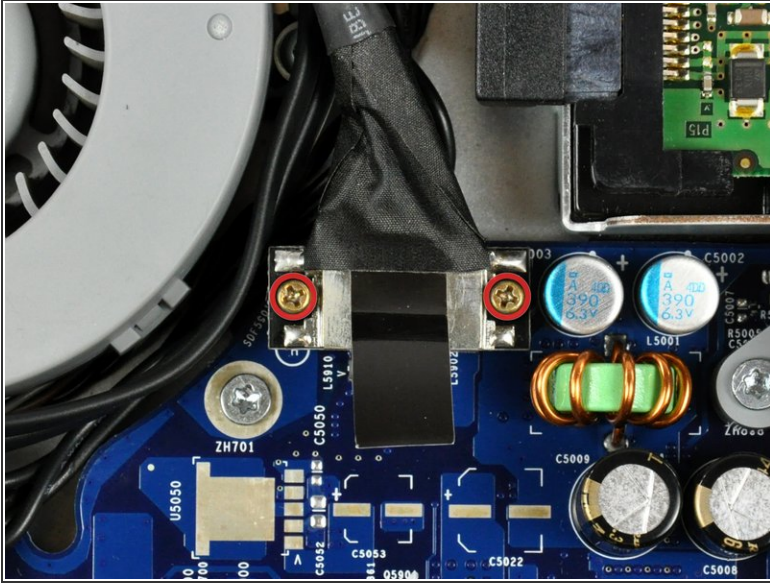
 The power supply requires a large amount of force to remove. You may need to slightly bend the edge of the front case toward yourself for enough clearance to remove the power supply.

Step 15 — Midplane Assembly



- Remove the two Phillips screws securing the fan cover to the midplane.
- ⓘ The shouldered screw belongs in the lower left corner of the fan cover.
- Lift the fan cover up off midplane.

Step 16



- Remove the two Phillips screws securing the display data cable to the logic board.
- Using its black pull tab, pull the display data cable connector straight up off its socket on the logic board.

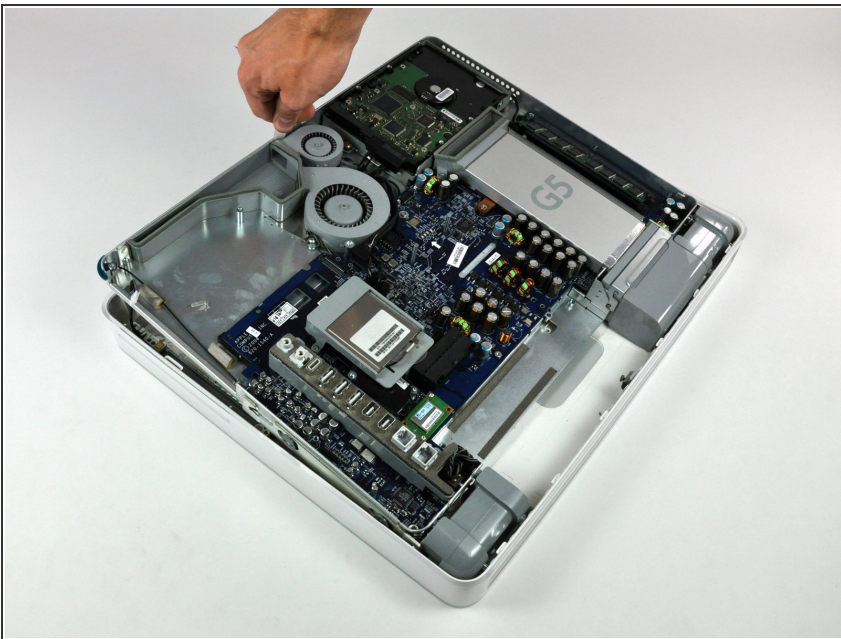
Step 17



- Remove the six Phillips screws securing the midplane to the front bezel.
- ☑ The three shorter screws fasten along the top edge of the iMac.

- i** The three screws along the top of the iMac often fall down into the front bezel when removed. We recommend using a magnetic screwdriver or placing a strip of duct tape over the tip of your screwdriver to help keep the screws from falling into the front bezel.

Step 18



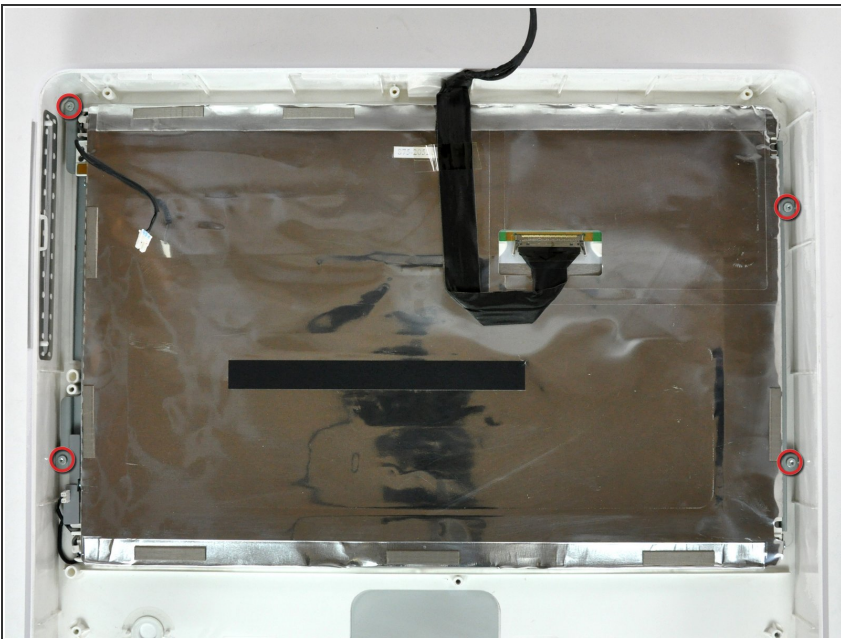
- Using its attached pull tab, lift the free edge of the midplane assembly slightly out of the front bezel.
- !** Don't completely remove the midplane assembly just yet.

Step 19



- Push the inverter-to-display cable connector through the hole in the midplane.
- Lift the now-free midplane assembly out of the front bezel.

Step 20 — Display



- Remove the four T10 Torx screws securing the display to the front bezel.

Step 21



- Grab the display from its outer edges and lift it out from the front bezel.
- ⓘ When lifting the display out of the front bezel, do not squeeze the lcd screen portion to avoid damaging the lcd element.

To reassemble your device, follow these instructions in reverse order.