



iMac G5 17" Model A1144 AirPort/Bluetooth Board Replacement

Written By: Walter Galan



INTRODUCTION

Regain wireless connectivity by replacing your broken AirPort/Bluetooth board.



TOOLS:

- [Phillips #1 Screwdriver](#) (1)
- [Plastic Cards](#) (1)
- [Spudger](#) (1)
- [T10 Torx Screwdriver](#) (1)
- [T6 Torx Screwdriver](#) (1)
- [T8 Torx Screwdriver](#) (1)



PARTS:

- [Mid/Late 2005 Airport/Bluetooth Board](#) (1)

Step 1 — Access Door



⚠ Before you work on the computer, unplug the computer and press the power button for 20-30 seconds to drain the stored energy in the power supply.

- Loosen the two Phillips screws securing the access door to your iMac.

i These screws are captive in the access door.

Step 2



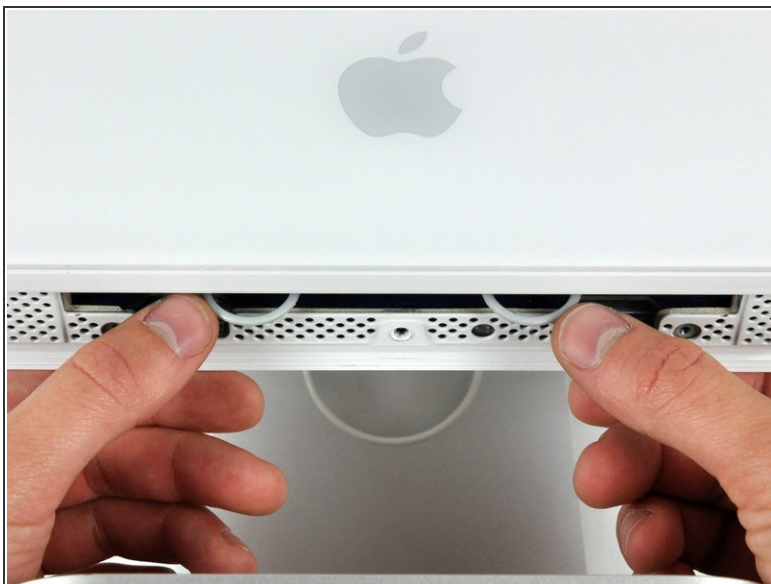
- Remove the access door from your iMac.

Step 3 — Front Bezel



- Remove the three T8 Torx screws securing the front bezel to the rear panel.

Step 4



i Orient the iMac face-up, on its backside.

- Use your thumbs to press both RAM arms in past the front bezel for enough clearance to lift it off the rear case.

Step 5



- While holding the RAM arms in with your thumbs, lift the lower edge of the front bezel enough to clear the rear case.

Step 6



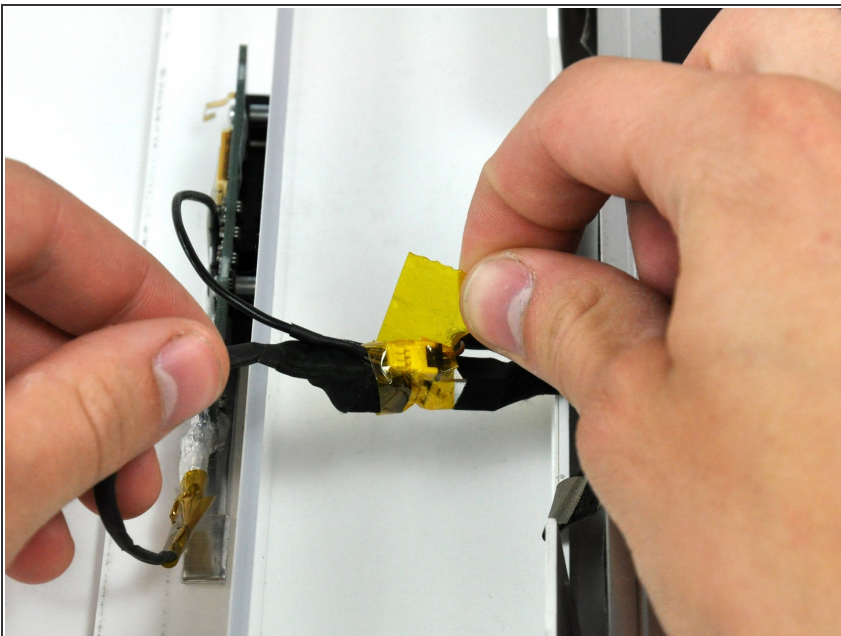
- ① Re-orient your iMac so it sits upright on the stand.
 - Insert a plastic card up into the corner of the air vent slot at the top of the rear case.
 - Push the card toward the top of the iMac to release the front bezel latch.
 - Pull the front bezel away from the rear case.
 - Repeat this process for the other side of the front bezel.
- ① It may be necessary to apply several layers of duct tape to the top of the access card to aid in releasing the latches.
- ① If the bezel refuses to release, try pressing the lower edge back onto the rear case and repeat this opening process.

Step 7



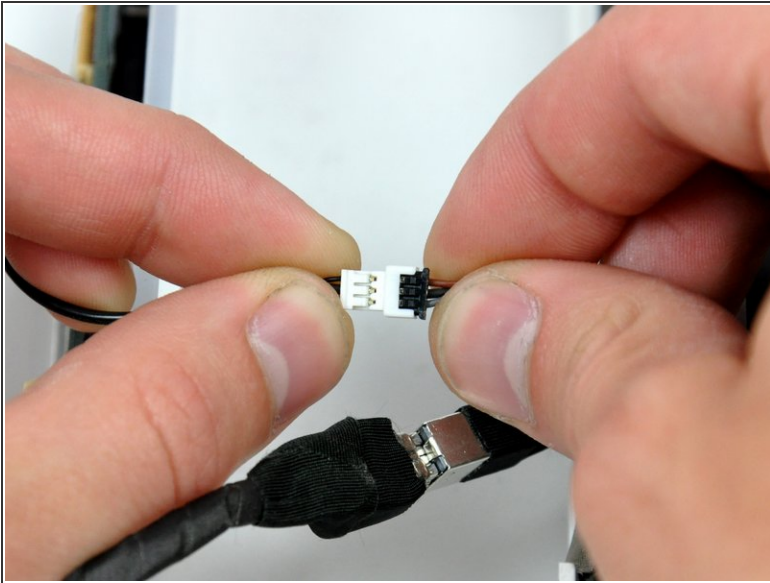
- Lay your iMac stand-side down on a table.
- Lift the front bezel from its lower edge and rotate it away from the rest of your iMac, minding the RAM arms that may get caught.
- Lay the front bezel above the rest of the iMac.

Step 8



- If necessary, remove the piece of kapton tape wrapped around the microphone and camera cables.

Step 9



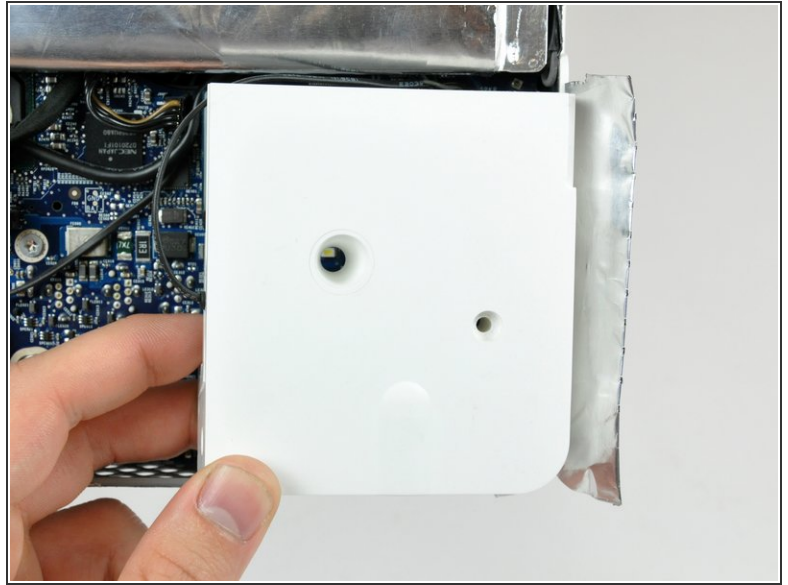
- Disconnect both the camera and microphone cables.

Step 10 — AirPort/Bluetooth Board



- Peel back the aluminum EMI shield up off the lower three edges of the rear case.
- ⓘ It is not necessary to peel the EMI shield off the display.
- ⓘ We found it helpful to tape the EMI shield up against the display to keep it out of the way.

Step 11



- Remove the single T10 Torx screw securing the right speaker to the rear case.
 - Pull the rear speaker out of the rear case, and move it out of the way.
- i** It is not necessary to disconnect the right speaker.

Step 12



- Remove the two T6 Torx screws securing the AirPort/Bluetooth board to the logic board.
- Lift the AirPort/Bluetooth board up from its left edge to separate it from its socket on the logic board.
- ⚠ Lift the AirPort/Bluetooth board from its left edge **only**. Trying to lift from its right edge may break the socket off the logic board.

Step 13



- Use the flat end of a spudger to pry the AirPort and Bluetooth antenna connectors up off the AirPort/Bluetooth board.

To reassemble your device, follow these instructions in reverse order.