



# iMac G5 17" Model A1144 IR Board Replacement

Written By: Walter Galan



---

# INTRODUCTION

The ins and outs of replacing your IR board.

---



## TOOLS:

- [Phillips #1 Screwdriver](#) (1)
  - [Plastic Cards](#) (1)
  - [T6 Torx Screwdriver](#) (1)
  - [T8 Torx Screwdriver](#) (1)
-

## Step 1 — Access Door



**!** Before you work on the computer, unplug the computer and press the power button for 20-30 seconds to drain the stored energy in the power supply.

- Loosen the two Phillips screws securing the access door to your iMac.

**i** These screws are captive in the access door.

## Step 2



- Remove the access door from your iMac.

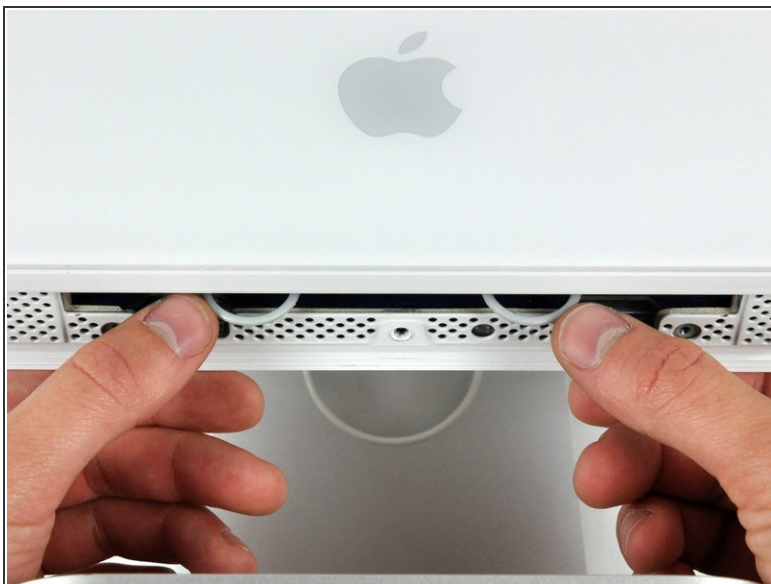


## Step 3 — Front Bezel



- Remove the three T8 Torx screws securing the front bezel to the rear panel.

## Step 4



**i** Orient the iMac face-up, on its backside.

- Use your thumbs to press both RAM arms in past the front bezel for enough clearance to lift it off the rear case.

## Step 5



- While holding the RAM arms in with your thumbs, lift the lower edge of the front bezel enough to clear the rear case.

## Step 6



- ① Re-orient your iMac so it sits upright on the stand.
  - Insert a plastic card up into the corner of the air vent slot at the top of the rear case.
  - Push the card toward the top of the iMac to release the front bezel latch.
  - Pull the front bezel away from the rear case.
  - Repeat this process for the other side of the front bezel.
- ① It may be necessary to apply several layers of duct tape to the top of the access card to aid in releasing the latches.
- ① If the bezel refuses to release, try pressing the lower edge back onto the rear case and repeat this opening process.

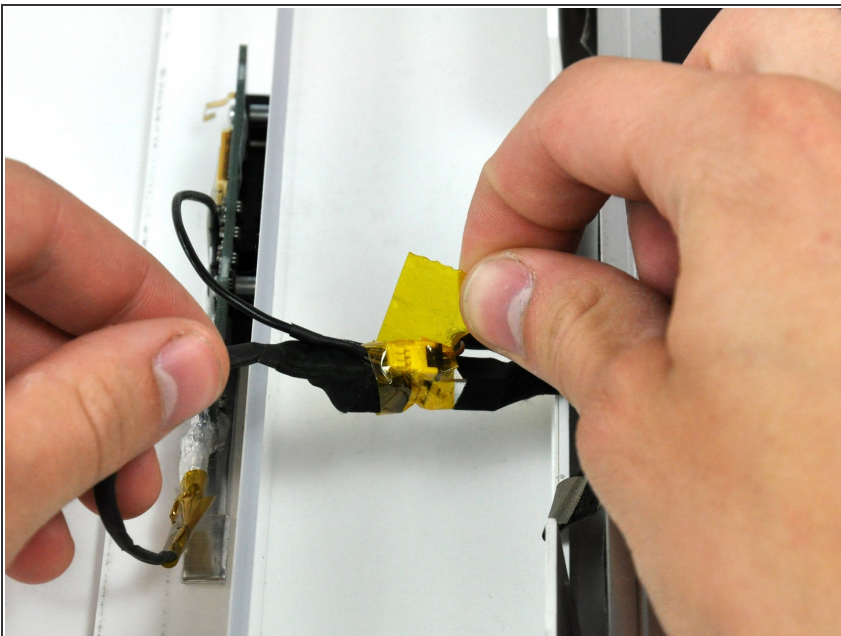


## Step 7



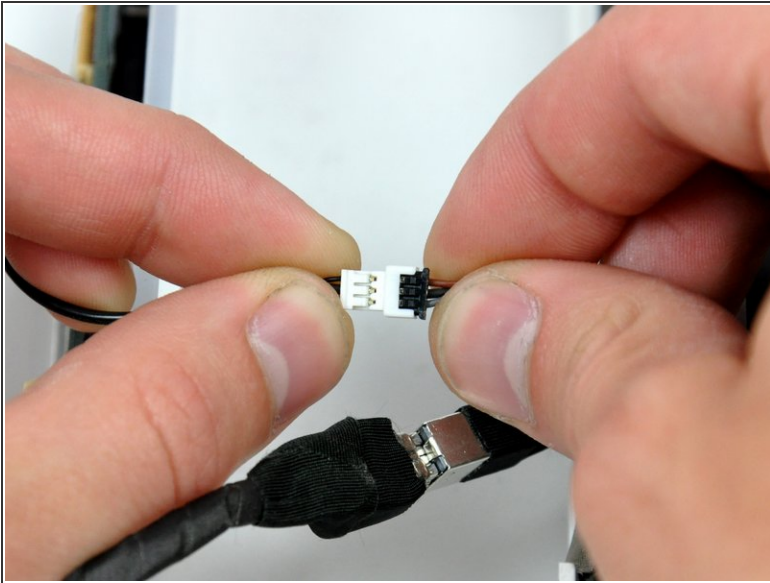
- Lay your iMac stand-side down on a table.
- Lift the front bezel from its lower edge and rotate it away from the rest of your iMac, minding the RAM arms that may get caught.
- Lay the front bezel above the rest of the iMac.

## Step 8



- If necessary, remove the piece of kapton tape wrapped around the microphone and camera cables.

## Step 9



- Disconnect both the camera and microphone cables.

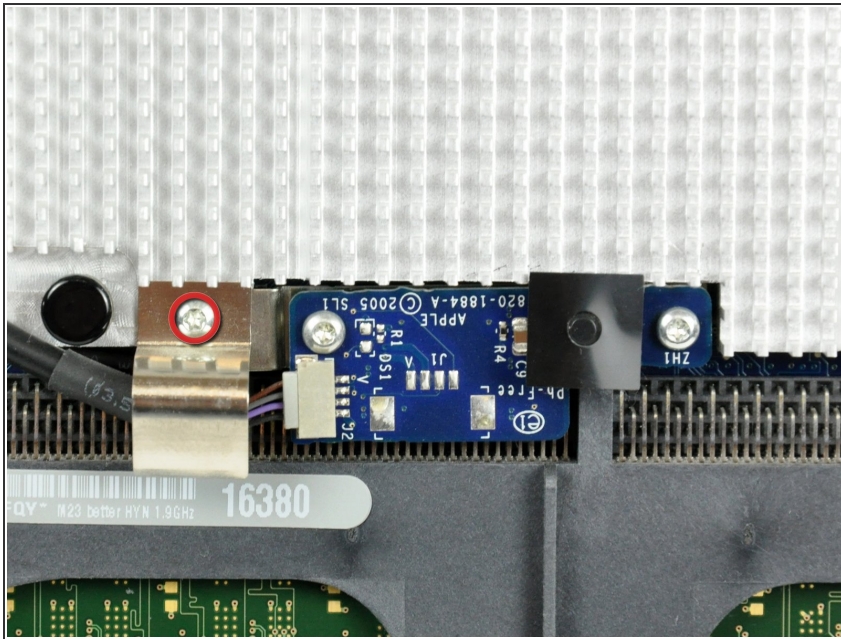
## Step 10 — IR Board



- Peel back the aluminum EMI shield up off the lower three edges of the rear case.
- ⓘ It is not necessary to peel the EMI shield off the display.
- ⓘ We found it helpful to tape the EMI shield up against the display to keep it out of the way.

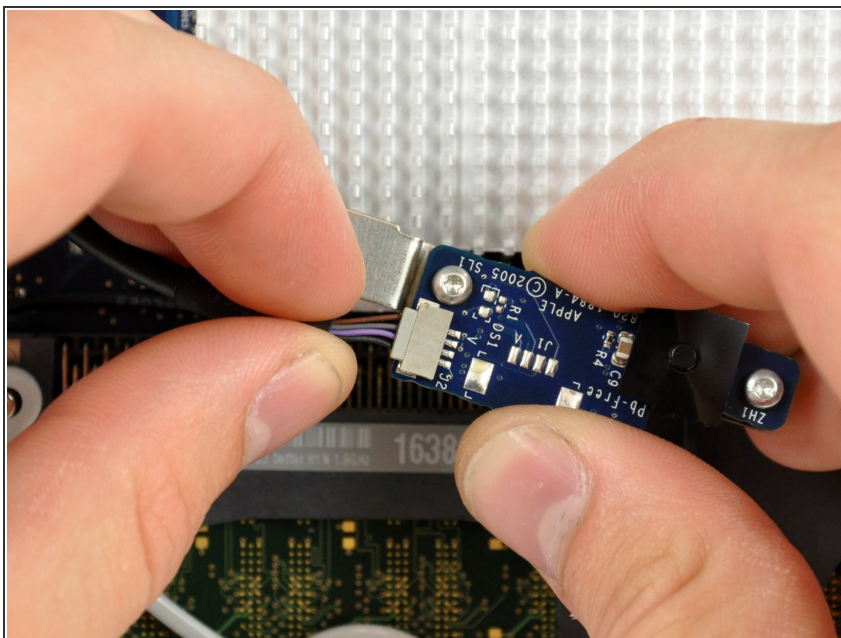


## Step 11



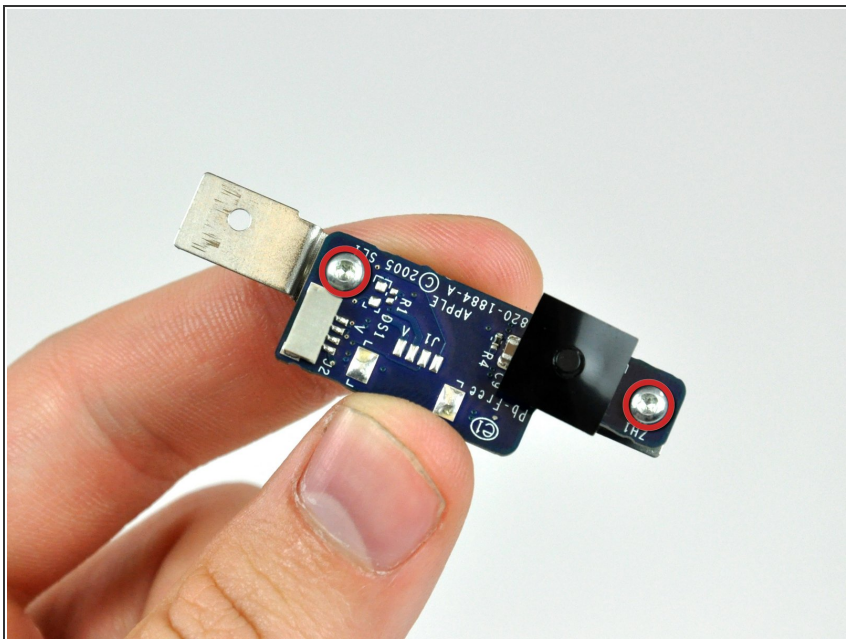
- Remove the single T6 Torx screw securing the IR board bracket to the logic board.
- ⚠ The IR board and cable finger are now free from the logic board and may fall.

## Step 12



- Pull the IR Board cable connector straight away from its socket on the IR board.

## Step 13



- Transfer the two T6 Torx screws and the IR bracket to your new IR board.

To reassemble your device, follow these instructions in reverse order.