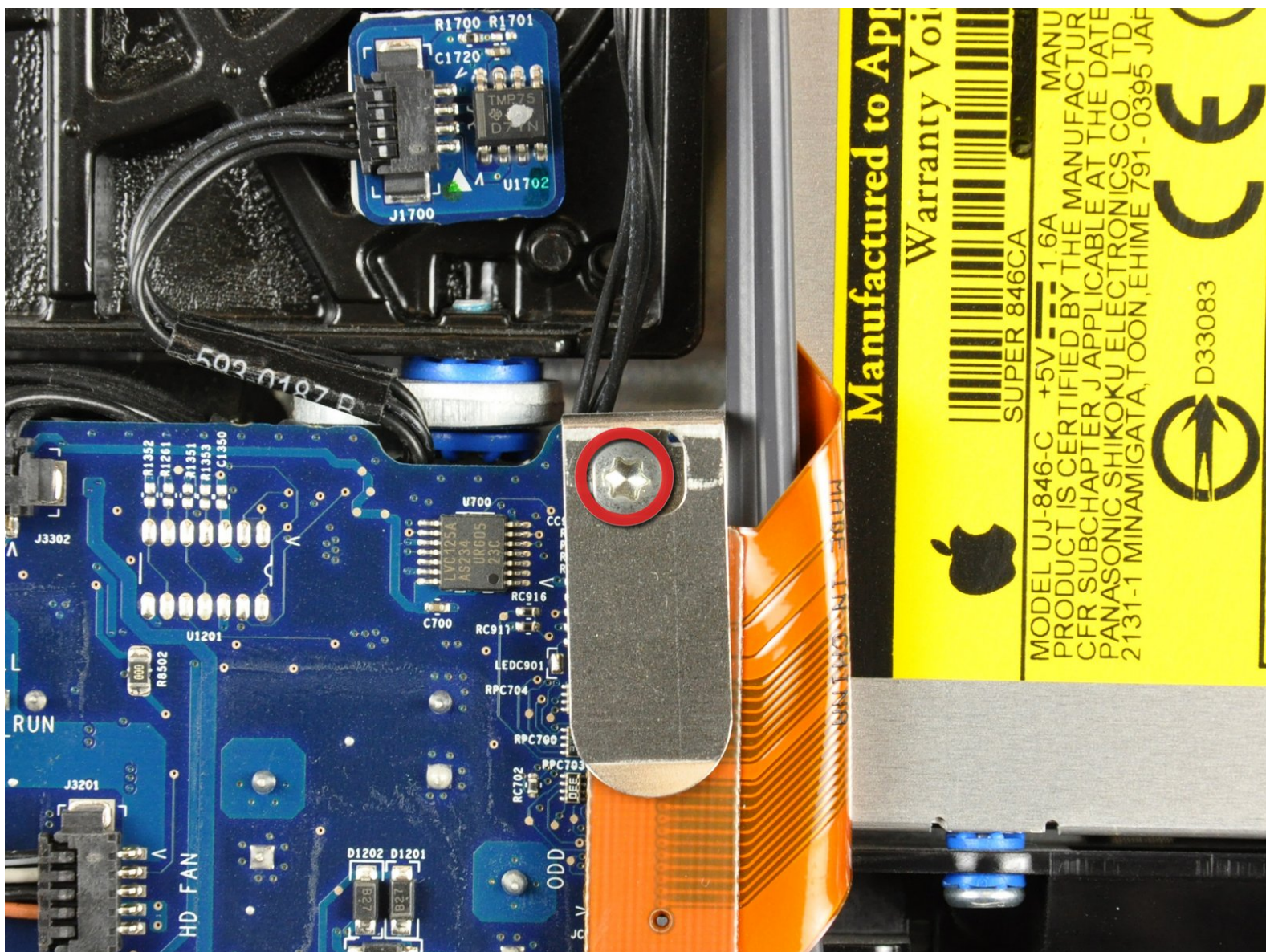




iMac G5 17" Model A1144 Optical Drive Replacement

Written By: Walter Galan

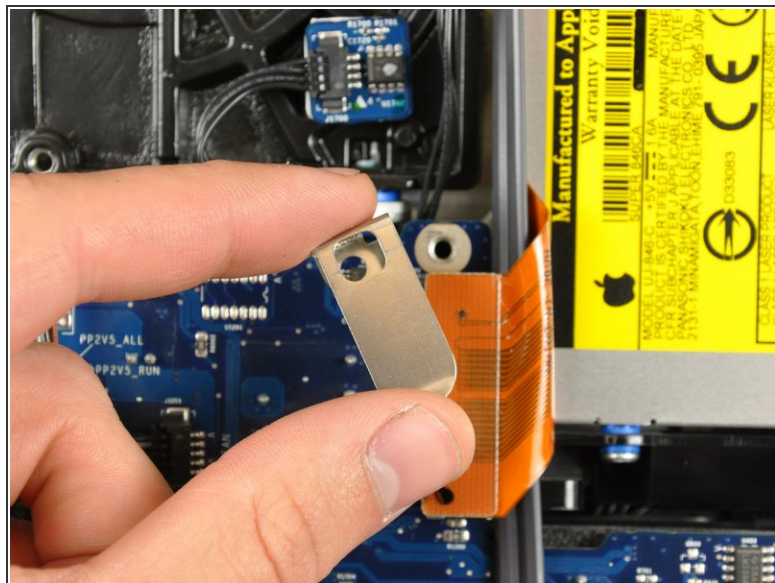
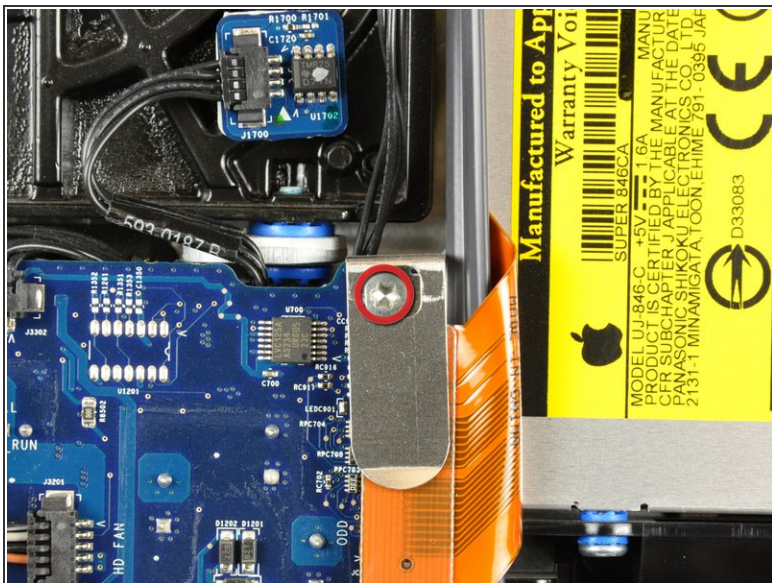




TOOLS:

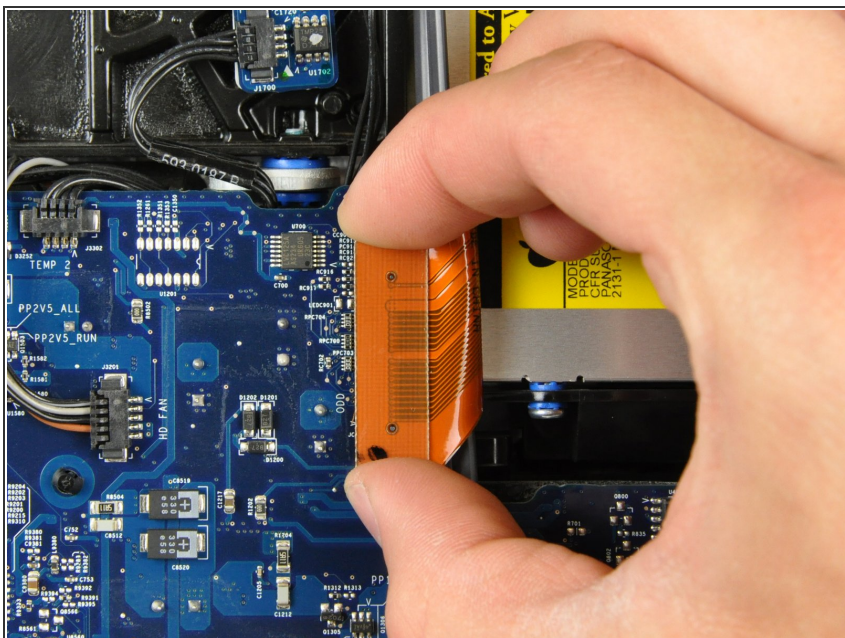
- [T10 Torx Screwdriver](#) (1)
- [Spudger](#) (1)

Step 1 — Optical Drive



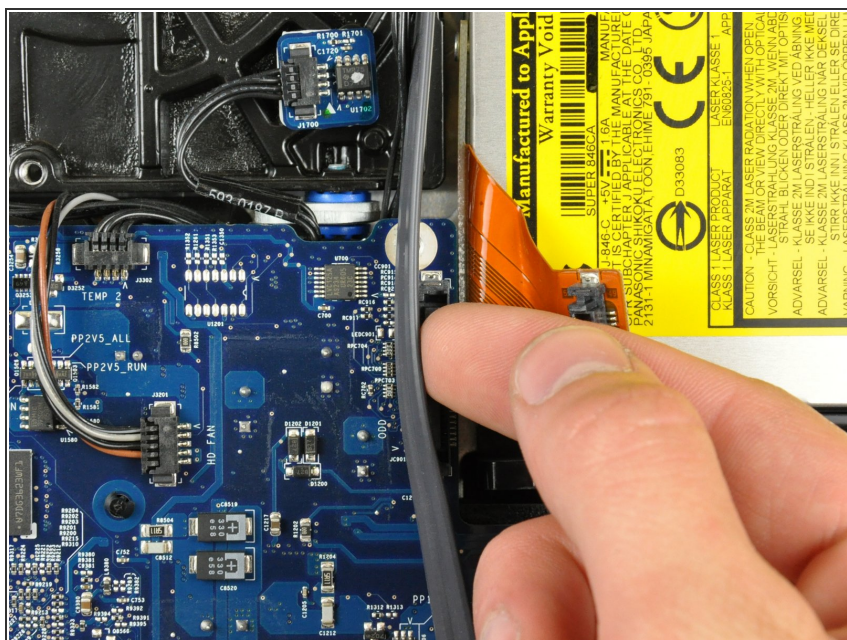
- Remove the T10 Torx screw securing the optical drive flex cable mounting bracket to the logic board.
- Remove the flex cable mounting bracket.

Step 2



- Lift the optical drive flex cable connector straight up off the logic board.
- ⚠ This ribbon cable is thin and easily torn. Use caution.

Step 3



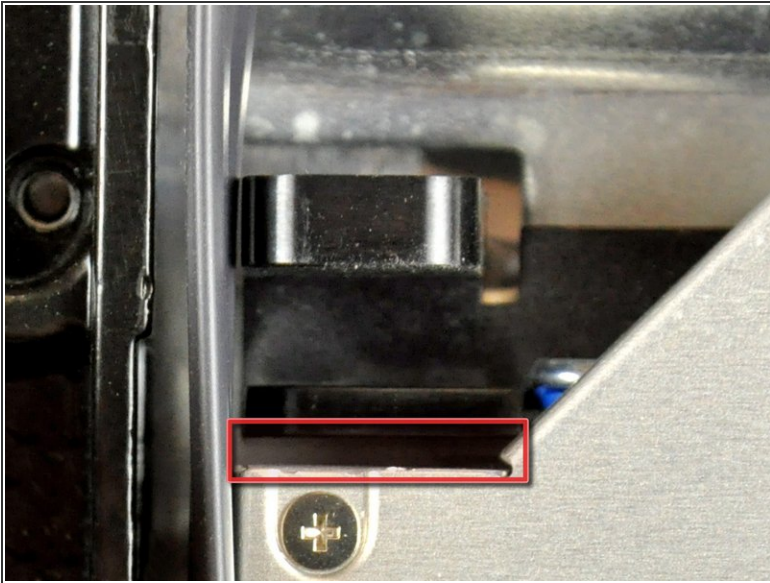
- Move the SATA data cable away from the edge of the optical drive.

Step 4



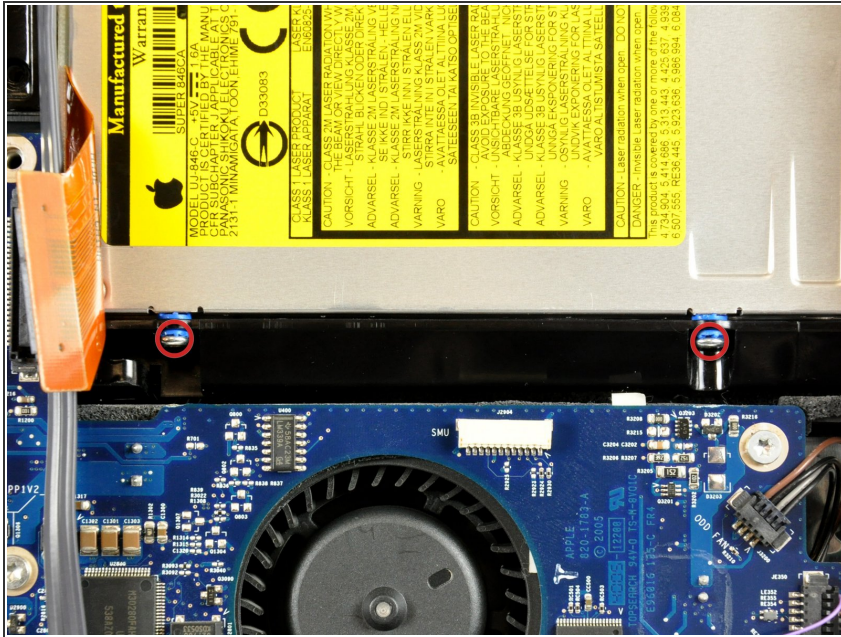
- Disconnect the optical drive thermal sensor.

Step 5



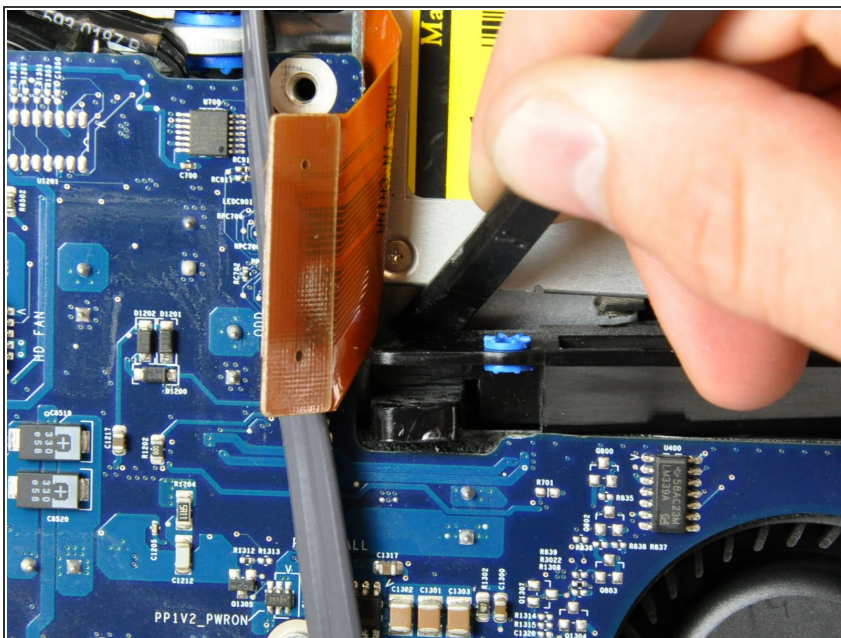
- i** Apple's "engineers" didn't learn much about deflection and material stiffness when they went to "college", so this optical drive is particularly difficult to remove because the bracket flexes too much. The next few steps require some patience and a good amount of force.
- Insert the flat end of a spudger into the gap between the optical drive and its bracket until it contacts the chassis.
 - Grab the spudger as close to the surface of the optical drive as you can, then depress the release tab with your thumb while pulling toward yourself.
- i** The wedge shape of the spudger may cause it to slip out of the gap toward yourself. Be sure to press the spudger in toward the rear case while squeezing the release tab.

Step 6



- Remove the two T10 Torx screws from the side of the optical drive.
- ⓘ It's a good idea to lay your iMac flat on a table before removing these screws to avoid them falling behind the logic board.

Step 7



- Use the flat end of a spudger to press the bottom edge of the lower optical drive bracket release tab toward the lower edge of the iMac.
- ⓘ The optical drive should now be free from the rear case.
- Maneuver the optical drive out of the rear case, minding the two plastic pins molded into the rear case near the open end of the optical drive that can break off.

To reassemble your device, follow these instructions in reverse order.