



# iMac G5 20" Model A1076 Hard Drive Replacement

Written By: Walter Galan



# INTRODUCTION

Upgrade your hard drive for more storage capacity.



## TOOLS:

- [Phillips #1 Screwdriver](#) (1)
- [Spudger](#) (1)
- [T10 Torx Screwdriver](#) (1)



## PARTS:

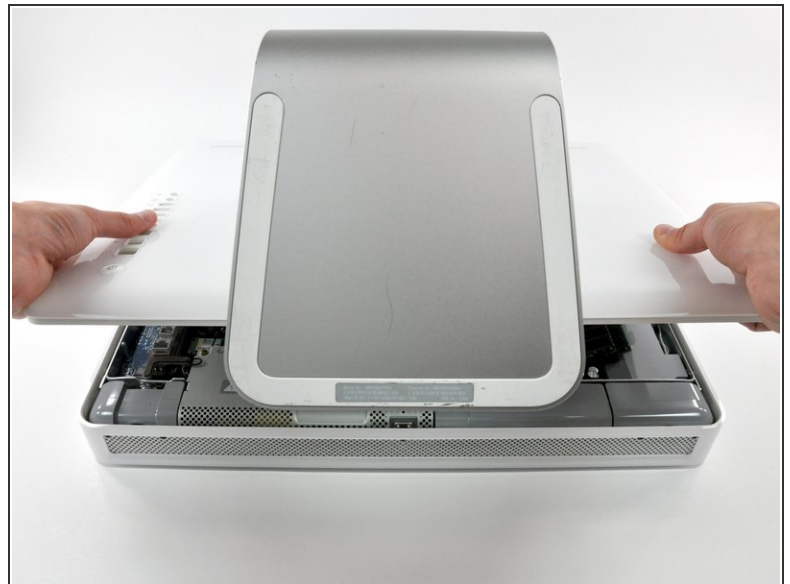
- [2 TB SATA Desktop Hard Drive](#) (1)
- [1 TB SATA Desktop Hard Drive](#) (1)
- [3 TB SATA Desktop Hard Drive](#) (1)
- [Universal Drive Adapter](#) (1)
- [4 TB 3.5" Hard Drive](#) (1)
- [2 TB SSD Hybrid 3.5" Hard Drive](#) (1)
- [1 TB SSD Hybrid 3.5" Hard Drive](#) (1)
- [4 TB SSD Hybrid 3.5" Hard Drive](#) (1)
- [iMac G5 20" 1.8 GHz Hard Drive Bracket](#) (1)

## Step 1 — Rear Panel



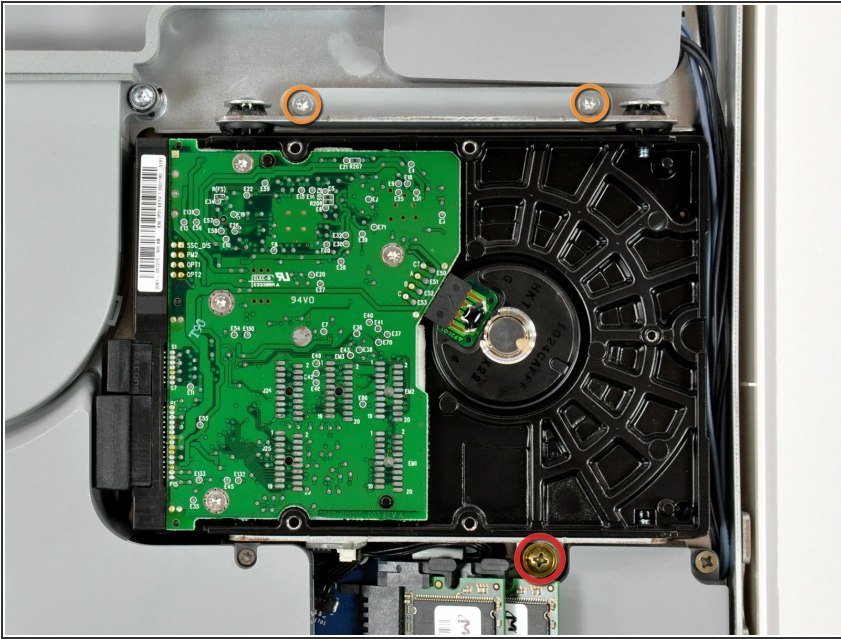
- Lay the iMac display-side down on a flat surface.
  - Loosen the three Phillips screws securing the rear panel to the iMac.
- ⚠ These screws are captive in the iMac. The center screw will stop turning after about 3.5 turns and the outer screws will stop turning after about 5.5 turns. Do not try to remove these screws from your iMac.

## Step 2



- Lift the rear panel slightly near the bottom of the iMac.
- Pull the rear panel toward yourself and remove it from the iMac.

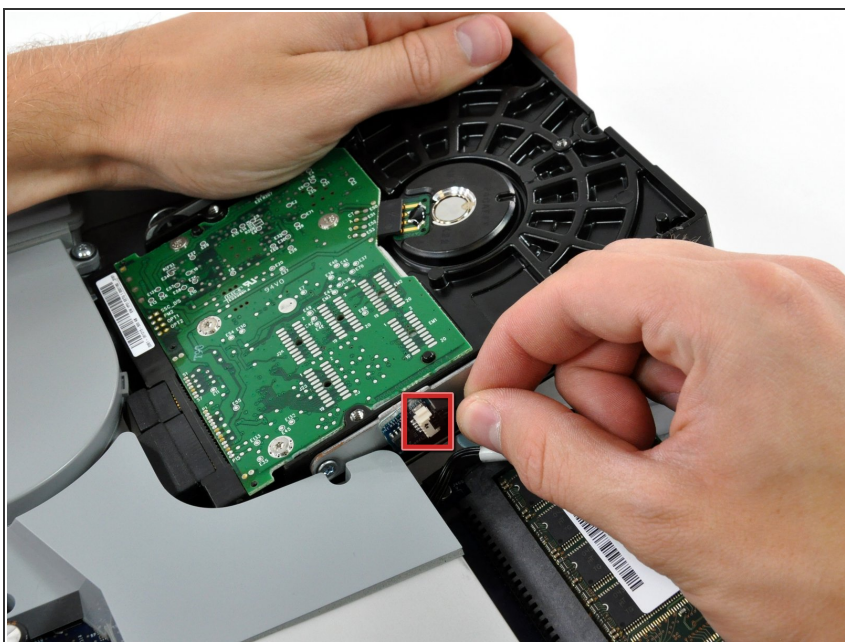
## Step 3 — Hard Drive




- Remove the following three screws:
  - One shouldered 12.4 mm Phillips.
  - Two 7 mm T10 Torx.



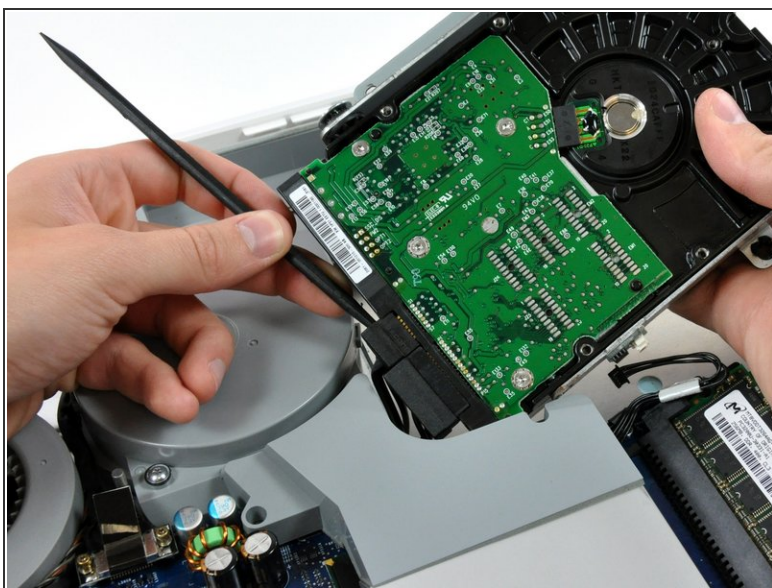
## Step 4




 The following action is optional. If you skip this step, be very careful not to strain the thermal sensor cable as you disconnect the hard drive cables and transfer this bracket to your new hard drive.

- Lift the hard drive slightly and disconnect the hard drive thermal sensor connector.

## Step 5



- Insert the flat end of a spudger into the gap between the SATA data connector and the hard drive.
  - Twist the spudger to separate the SATA data connector from the hard drive, then disconnect it from the hard drive.
-  Repeat this process for the SATA power connector.

This document was generated on 2019-09-23 09:33:57 AM (MST).

## Step 6



- Lift the hard drive out of the iMac.
- ⓘ If you are installing a new hard drive, we have an [OS X install guide](#) to get you up and running.

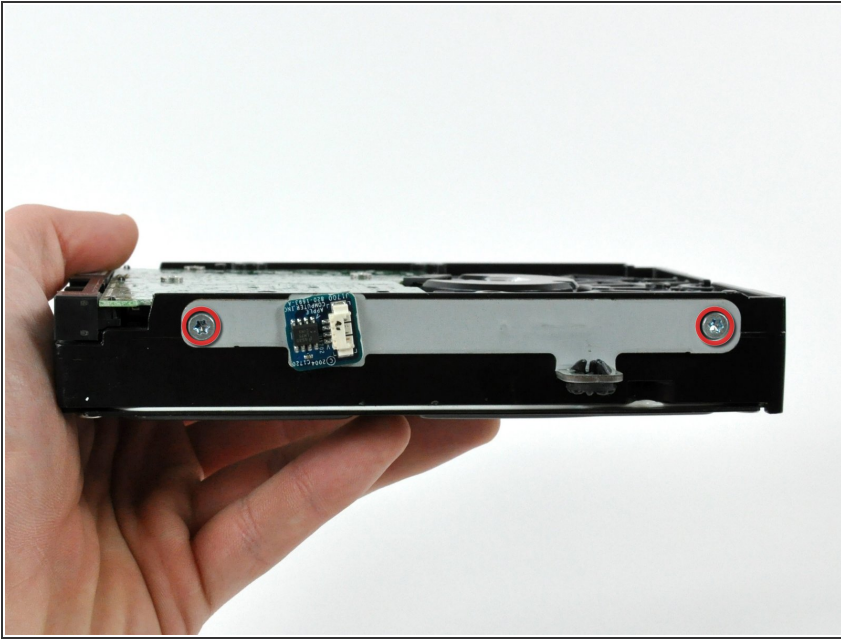
## Step 7 — Hard Drive



- Remove the two 15 mm shouldered T10 Torx screws from the hard drive and remove the bracket.



## Step 8



- Remove the two 6 mm T10 Torx screws from the hard drive and remove the hard drive bracket.
- ★ The hard drive bracket with the thermal sensor board is attached to the SATA connector side of the hard drive.
- ⓘ If you are installing a new hard drive, we have an [OS X install guide](#) to get you up and running.

To reassemble your device, follow these instructions in reverse order.