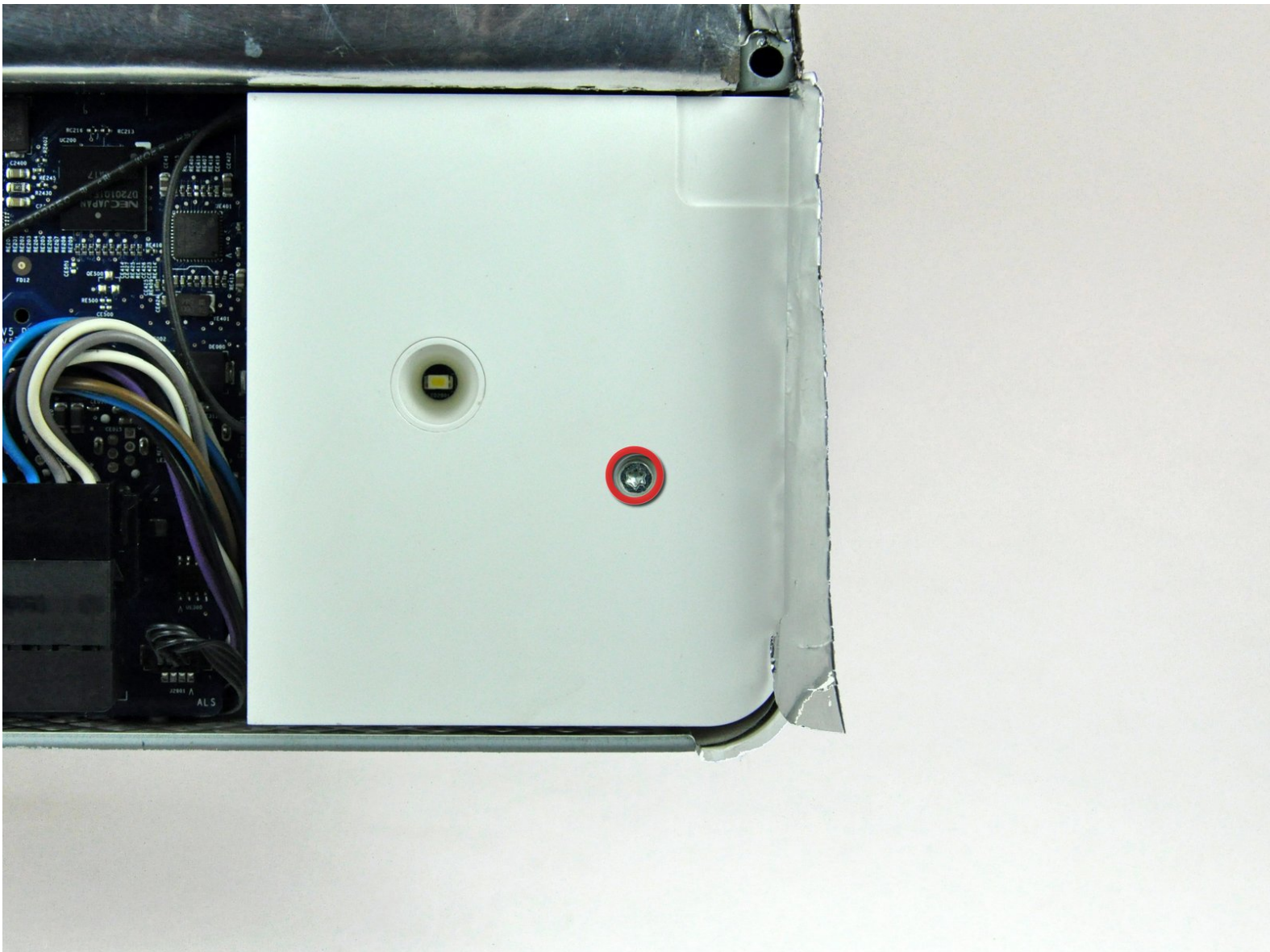




# iMac G5 20" Model A1145 AirPort/Bluetooth Board Replacement

Written By: Andrew Bookholt



# INTRODUCTION

Replace a broken AirPort/Bluetooth board to regain wireless connectivity.



## TOOLS:

- [Phillips #00 Screwdriver](#) (1)
- [Phillips #1 Screwdriver](#) (1)
- [Plastic Cards](#) (1)
- [Spudger](#) (1)
- [T10 Torx Screwdriver](#) (1)
- [T6 Torx Screwdriver](#) (1)
- [T8 Torx Screwdriver](#) (1)




## PARTS:


- [Mid/Late 2005 Airport/Bluetooth Board](#) (1)

## Step 1 — Access Door



- Orient the iMac face-side down on a table with the bottom edge facing yourself.
- Remove the two Phillips screws securing the access door to the bottom grille of your iMac.

 The screws are captive in the access door.

 **Before beginning the repair, unplug the computer and press and hold the power switch for 20-30 seconds, to discharge internal capacitors.**

## Step 2



- Remove the access door.

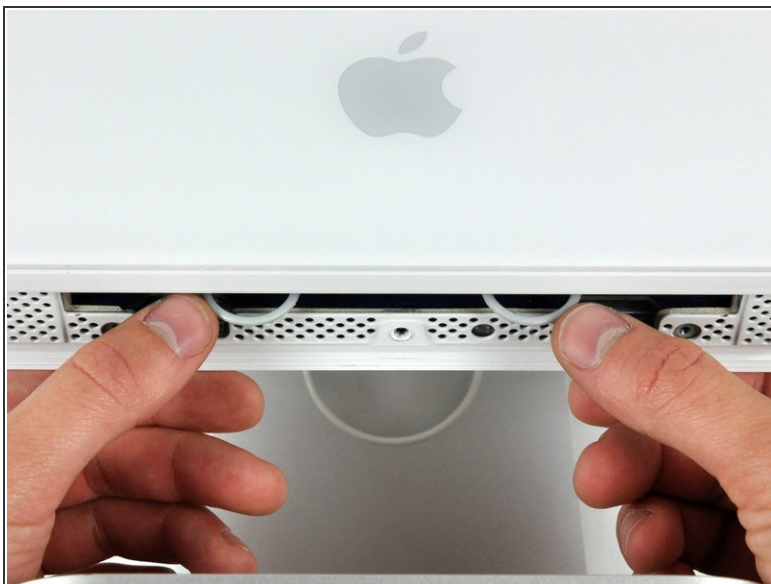


## Step 3 — Front Bezel



- Remove the three T8 Torx screws securing the front bezel to the rear case along the lower edge of the iMac.

## Step 4



- Turn the computer over.
- Use your thumbs to press both RAM arms in past the front bezel for enough clearance to lift it off the rear case.

## Step 5



- While holding the RAM arms in with your thumbs, lift the lower edge of the front bezel enough to clear the rear case.

## Step 6



**i** Re-orient your iMac so it sits upright on the stand.

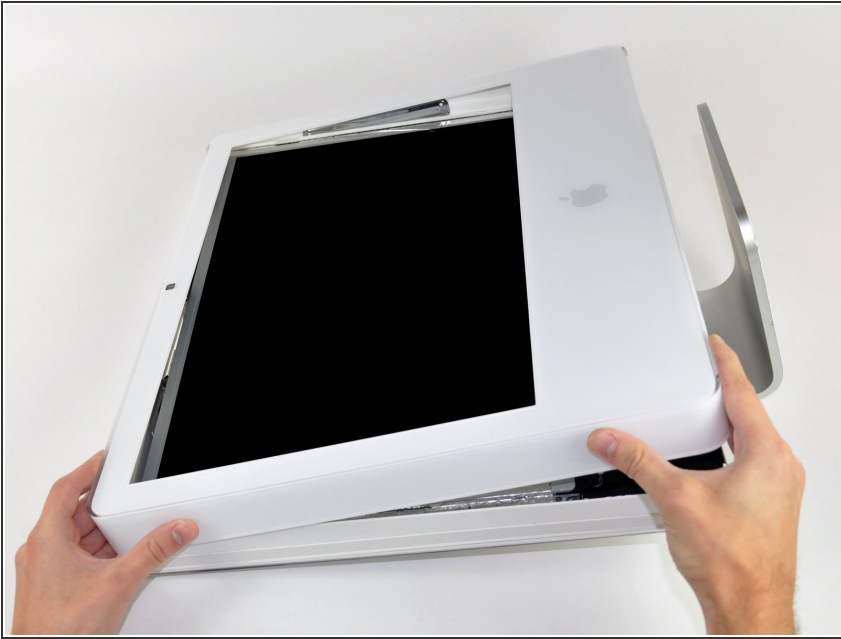
- Insert a plastic card up into the corner of the air vent slot near the top of the rear case.
- Push the card toward the top of the iMac to release the front bezel latch.
- Pull the front bezel away from the rear case.
- Repeat this process for the other side of the front bezel.

**i** It may be necessary to apply several layers of duct tape to the top of the access card to aid in releasing the latches.

- If the bezel refuses to release, try pressing the lower edge back onto the rear case and repeat this opening process.

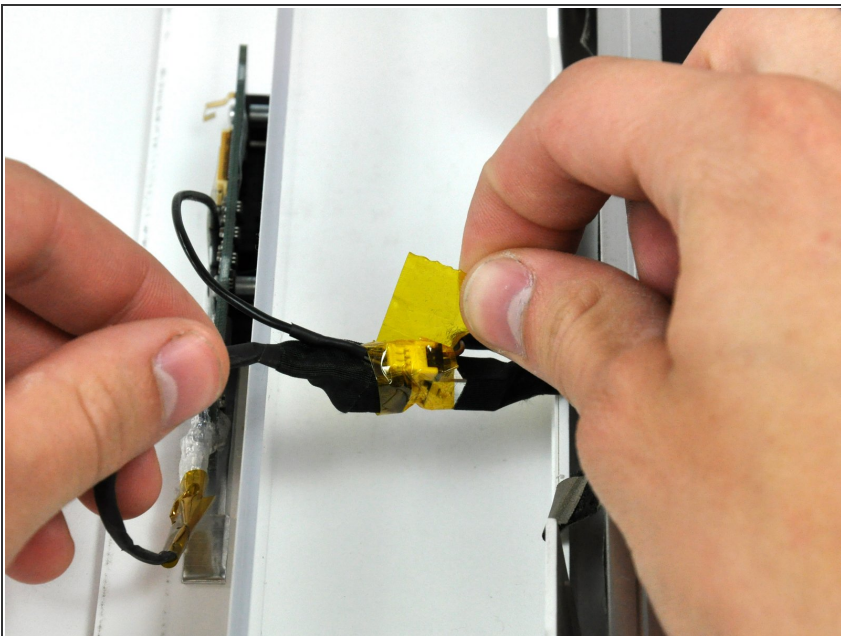
**i** Alternatively, you can use a strong magnet by holding it to the front top left/right corner of the display. You will hear a snapping sound when the hatch is released.

## Step 7



- Lay your iMac stand-side down on a table.
- Lift the front bezel from its lower edge and rotate it away from the rest of your iMac, minding the RAM arms that may get caught.
- Lay the front bezel above the rest of the iMac.

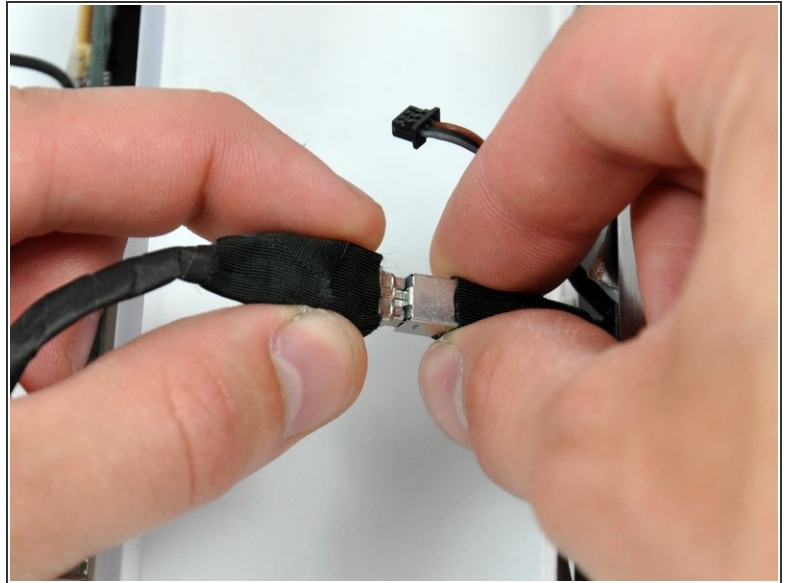
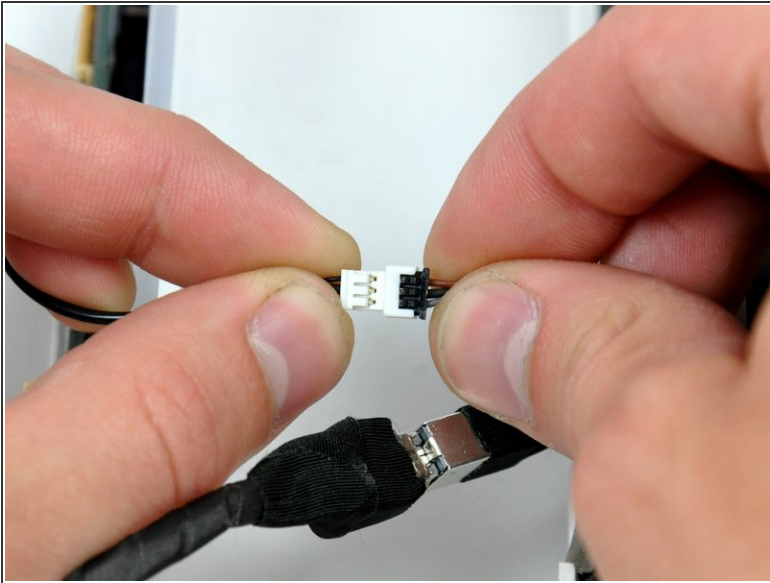
## Step 8



- If necessary, remove the piece of kapton tape wrapped around the microphone and camera connectors.



## Step 9



- Disconnect both the camera and microphone cables.

## Step 10 — Lower EMI Shield



- Peel the lower EMI shield off the lower edge of the iMac and off the two vertical 4" sections on either side of the iMac.
- ⓘ It is not necessary to peel the lower EMI shield off the display.

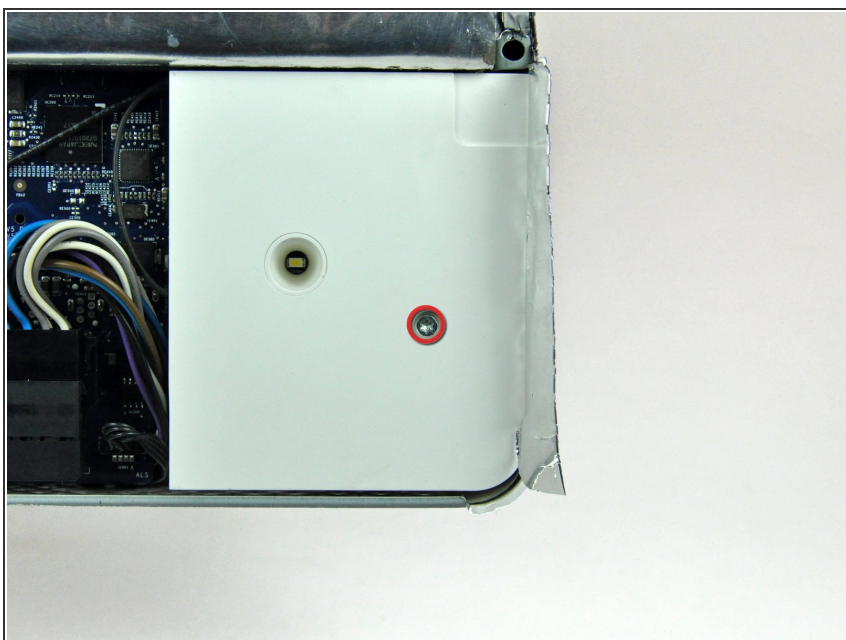


## Step 11



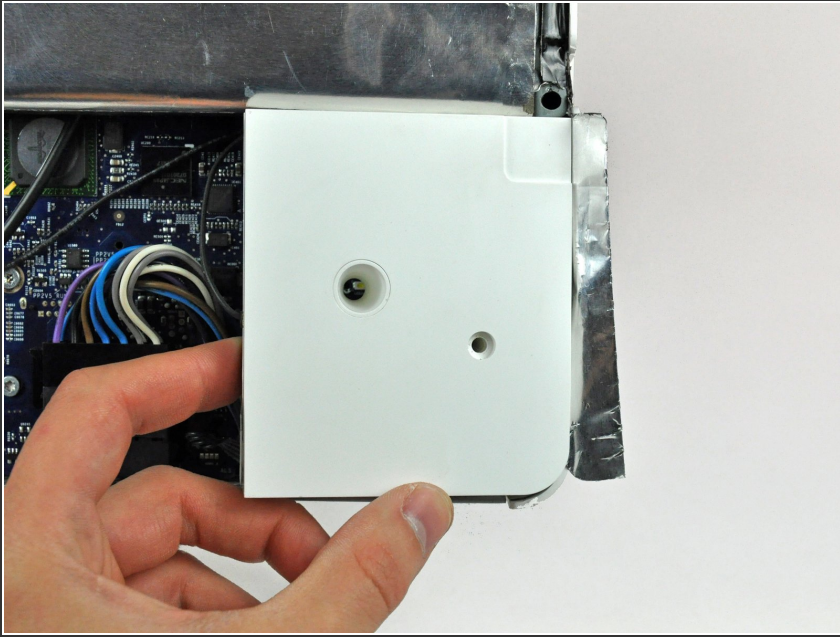
- Tape the lower EMI shield up against the face of the display to keep it out of the way while you work.

## Step 12 — AirPort/Bluetooth Board



- Remove the single T10 Torx screw securing the right speaker to the rear case.

## Step 13



- Lift the right speaker out of the rear case.
- ⓘ The cable between the speaker and its connector is short, so either hold the speaker or allow it to hang from the iMac for the next few steps.

## Step 14



- Remove the two Phillips screws securing the AirPort/Bluetooth board to the logic board.
- ⓘ On some models, these may be T6 Torx screws.



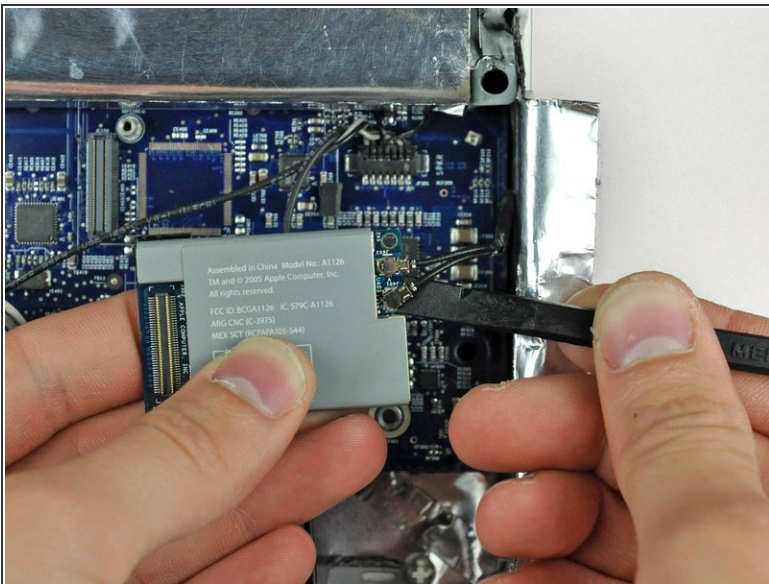
## Step 15



- Use your finger to lift the AirPort/Bluetooth board from its left edge, disconnecting it from the logic board.

⚠ Lift the board from its left edge **only**.

## Step 16



- Use the flat end of a spudger to pry both antenna connectors up off the AirPort/Bluetooth board.

To reassemble your device, follow these instructions in reverse order.