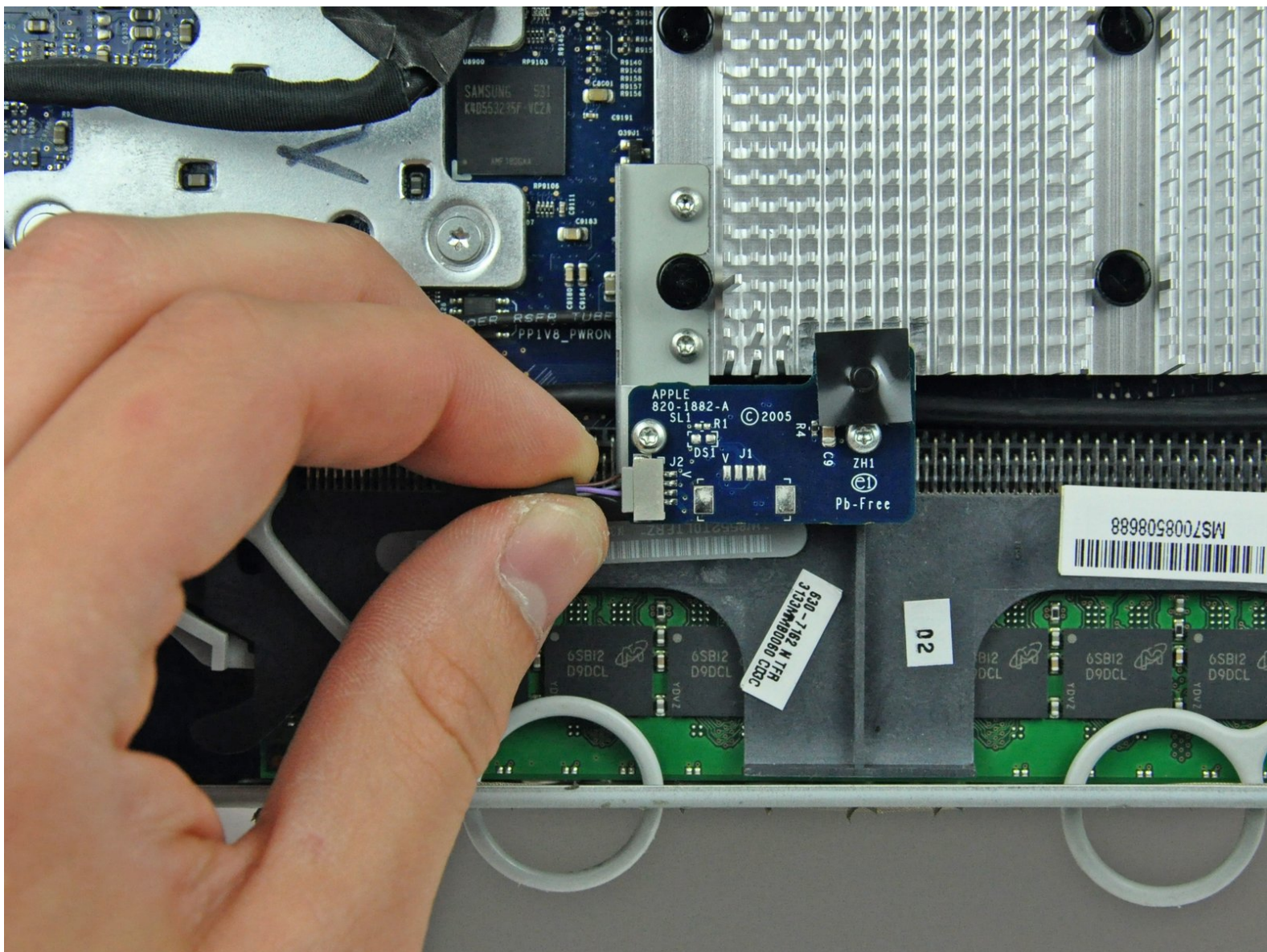




iMac G5 20" Model A1145 IR Board Replacement

Written By: Andrew Bookholt



INTRODUCTION

Replace a faulty IR board to restore control of your iMac with an Apple remote.


TOOLS:


- [Phillips #1 Screwdriver](#) (1)
 - [Plastic Cards](#) (1)
 - [T6 Torx Screwdriver](#) (1)
 - [T8 Torx Screwdriver](#) (1)
-

Step 1 — Access Door



- Orient the iMac face-side down on a table with the bottom edge facing yourself.
- Remove the two Phillips screws securing the access door to the bottom grille of your iMac.

 The screws are captive in the access door.

 **Before beginning the repair, unplug the computer and press and hold the power switch for 20-30 seconds, to discharge internal capacitors.**

Step 2



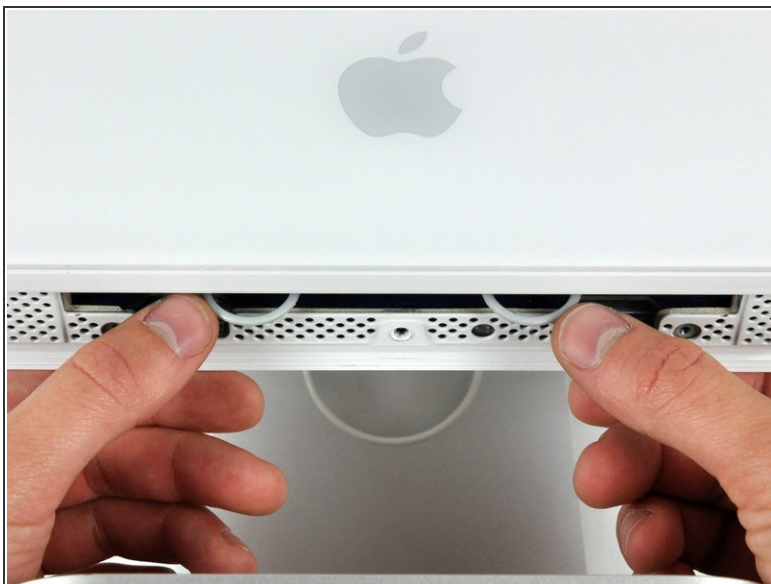
- Remove the access door.

Step 3 — Front Bezel



- Remove the three T8 Torx screws securing the front bezel to the rear case along the lower edge of the iMac.

Step 4



- Turn the computer over.
- Use your thumbs to press both RAM arms in past the front bezel for enough clearance to lift it off the rear case.

Step 5



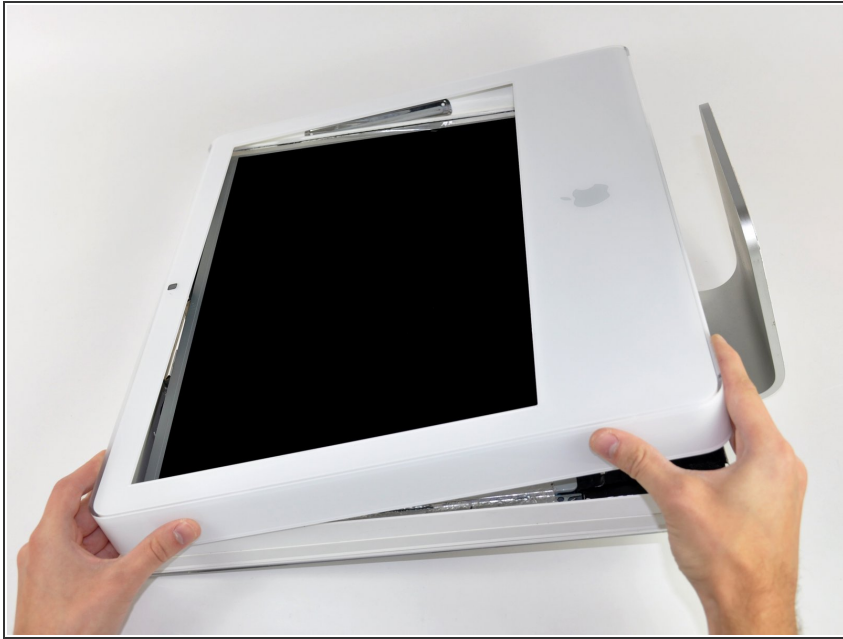
- While holding the RAM arms in with your thumbs, lift the lower edge of the front bezel enough to clear the rear case.

Step 6



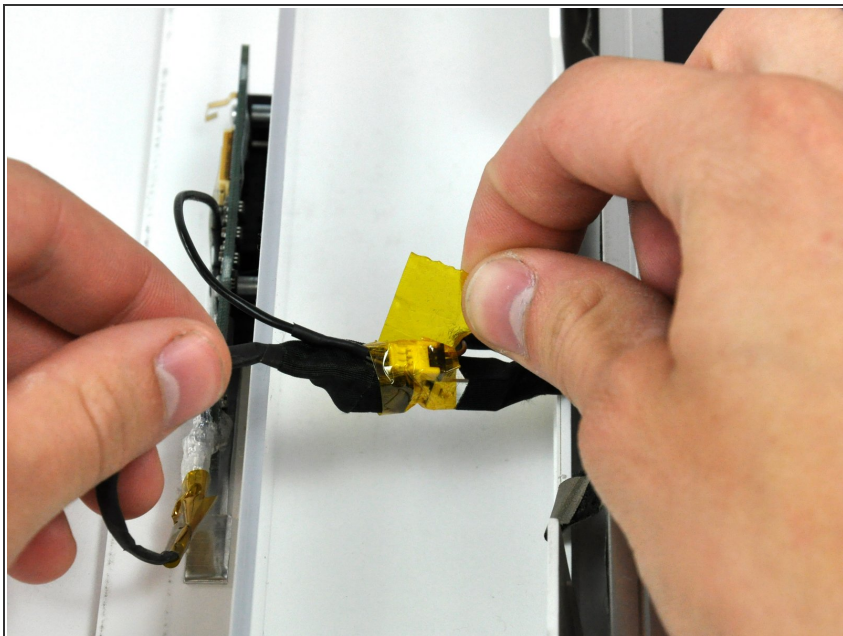
- ❗ Re-orient your iMac so it sits upright on the stand.
 - Insert a plastic card up into the corner of the air vent slot near the top of the rear case.
 - Push the card toward the top of the iMac to release the front bezel latch.
 - Pull the front bezel away from the rear case.
 - Repeat this process for the other side of the front bezel.
- ❗ It may be necessary to apply several layers of duct tape to the top of the access card to aid in releasing the latches.
 - If the bezel refuses to release, try pressing the lower edge back onto the rear case and repeat this opening process.
- ❗ Alternatively, you can use a strong magnet by holding it to the front top left/right corner of the display. You will hear a snapping sound when the hatch is released.

Step 7



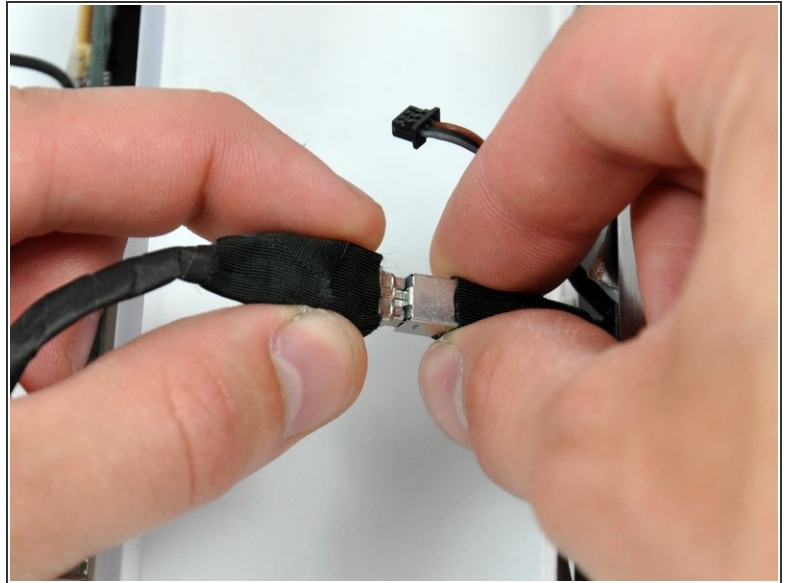
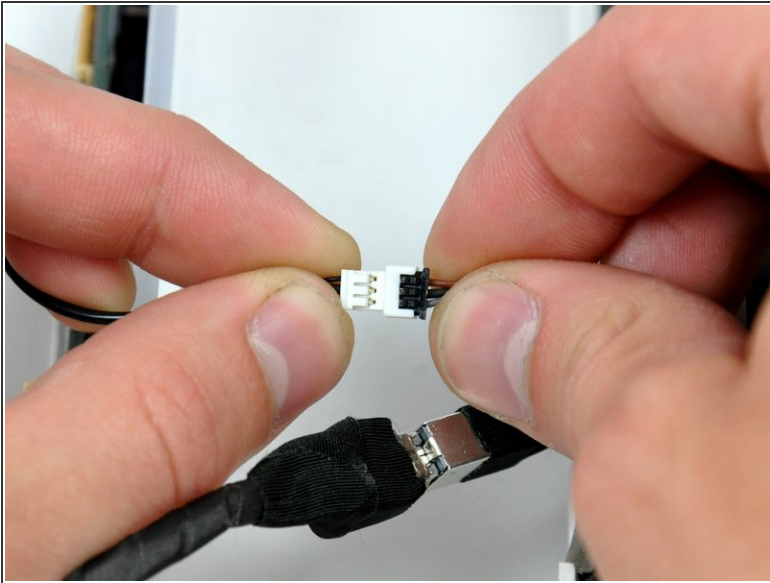
- Lay your iMac stand-side down on a table.
- Lift the front bezel from its lower edge and rotate it away from the rest of your iMac, minding the RAM arms that may get caught.
- Lay the front bezel above the rest of the iMac.

Step 8



- If necessary, remove the piece of kapton tape wrapped around the microphone and camera connectors.

Step 9



- Disconnect both the camera and microphone cables.

Step 10 — Lower EMI Shield



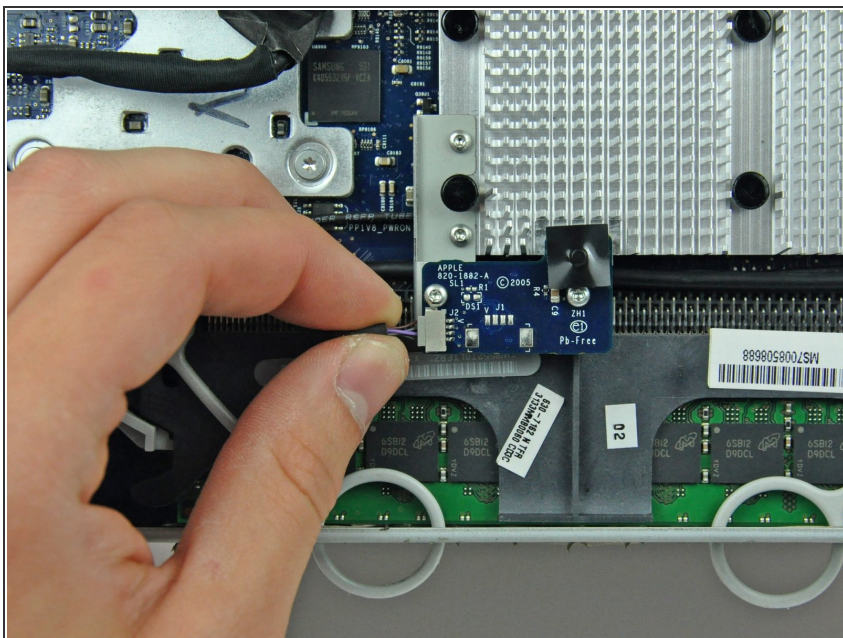
- Peel the lower EMI shield off the lower edge of the iMac and off the two vertical 4" sections on either side of the iMac.
- ⓘ It is not necessary to peel the lower EMI shield off the display.

Step 11



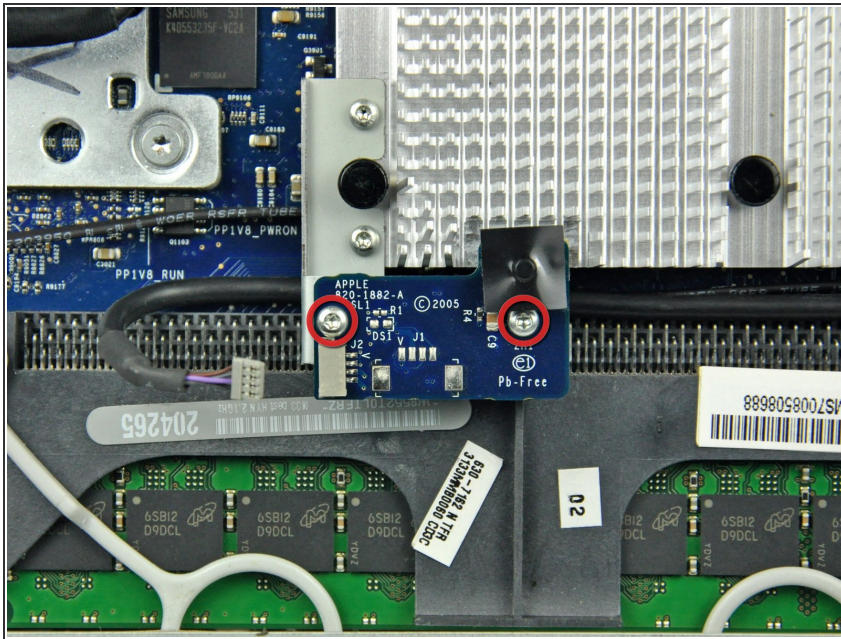
- Tape the lower EMI shield up against the face of the display to keep it out of the way while you work.

Step 12 — IR Board



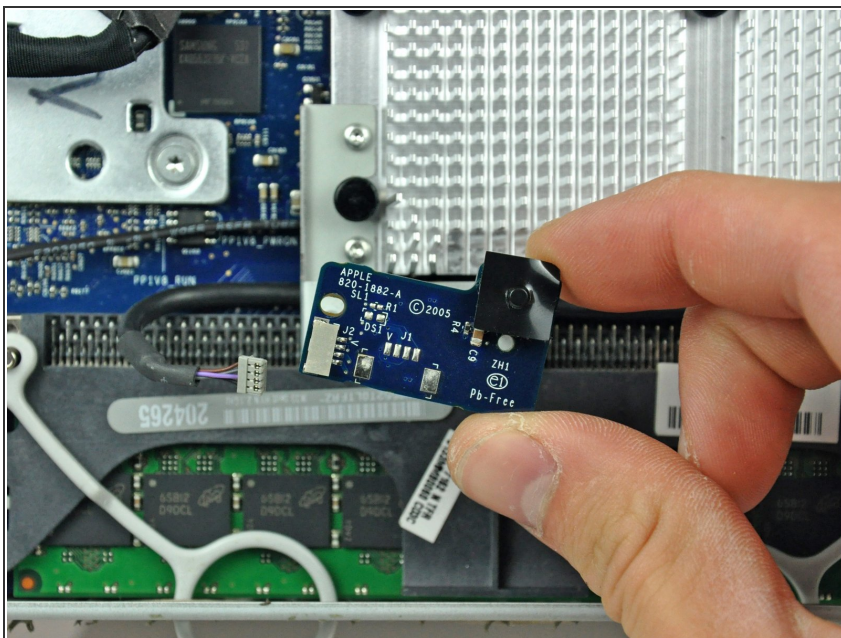
- Disconnect the IR board cable by pulling its connector toward the left edge of your iMac.

Step 13



- Remove the two T6 Torx screws securing the IR board to its metal bracket.
- ⚠ Hold the IR board as you remove the last screw, as it may fall.

Step 14



- Remove the IR board from your iMac.

To reassemble your device, follow these instructions in reverse order.