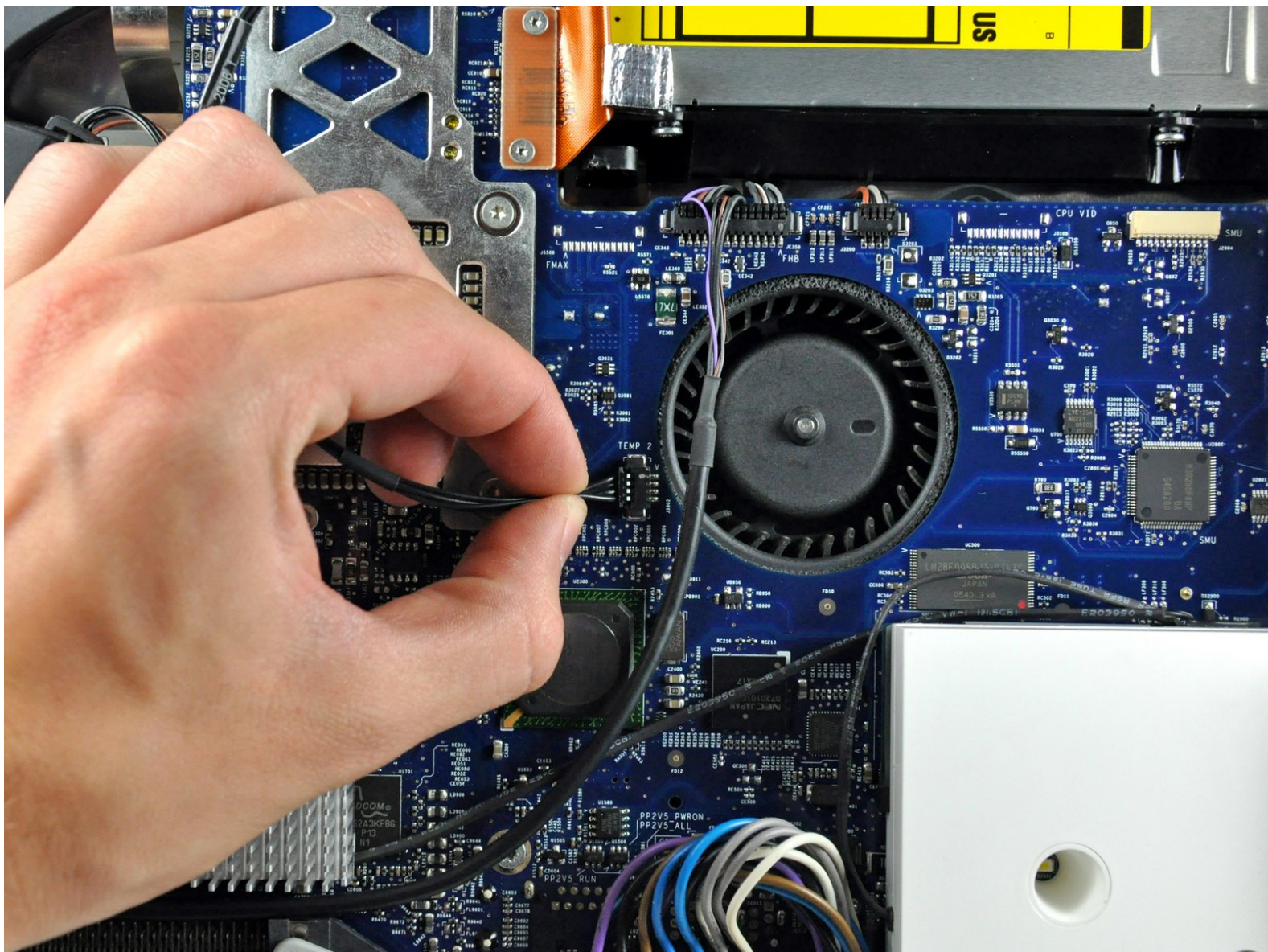




iMac G5 20" Model A1145 Optical Drive Replacement

Written By: Andrew Bookholt

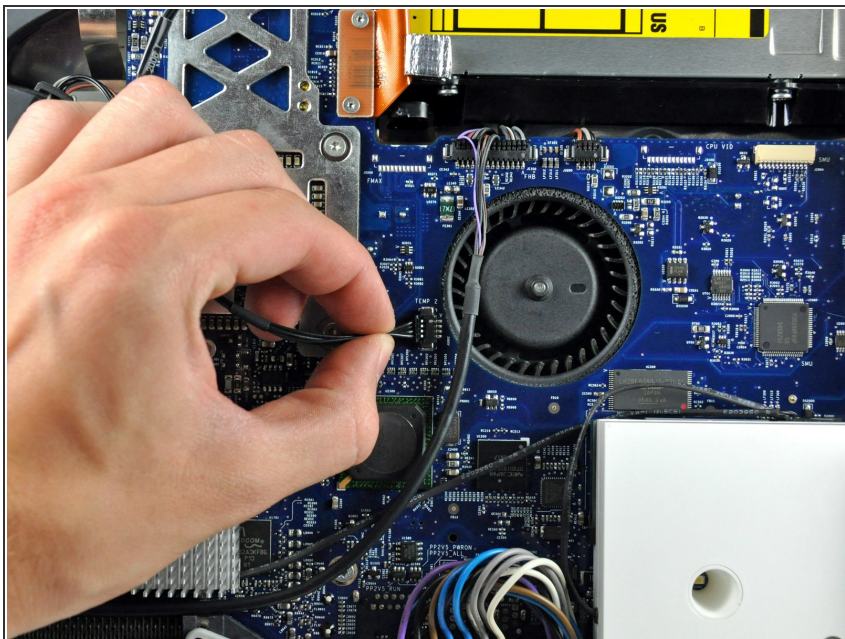




TOOLS:

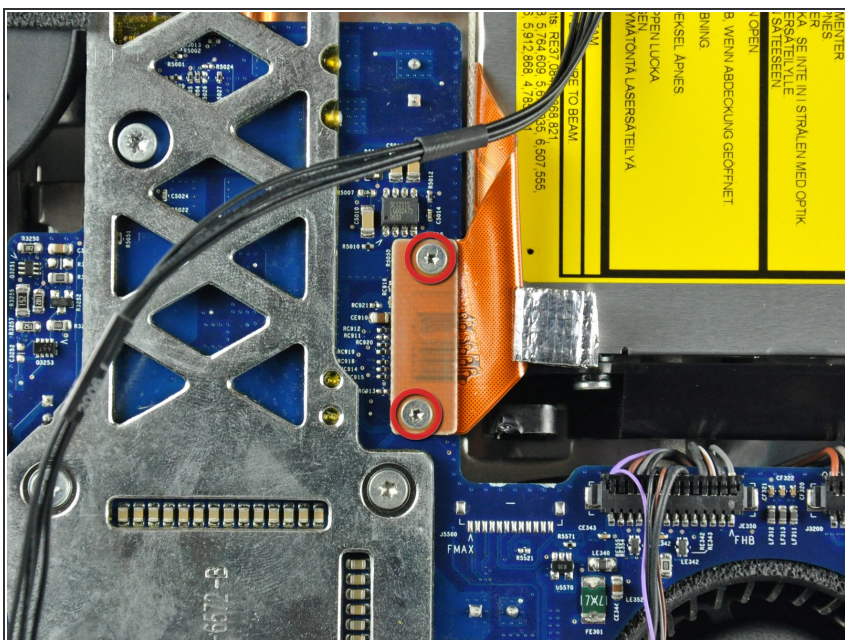
- [T6 Torx Screwdriver](#) (1)
- [T10 Torx Screwdriver](#) (1)
- [Spudger](#) (1)

Step 1 — Optical Drive



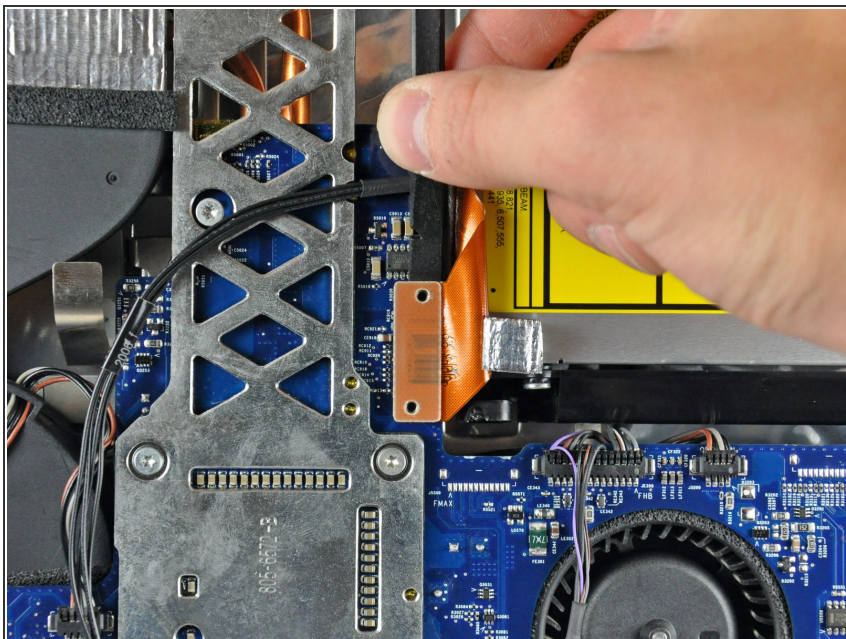
- Disconnect the optical drive thermal sensor by pulling its cable toward the left edge of your iMac.

Step 2



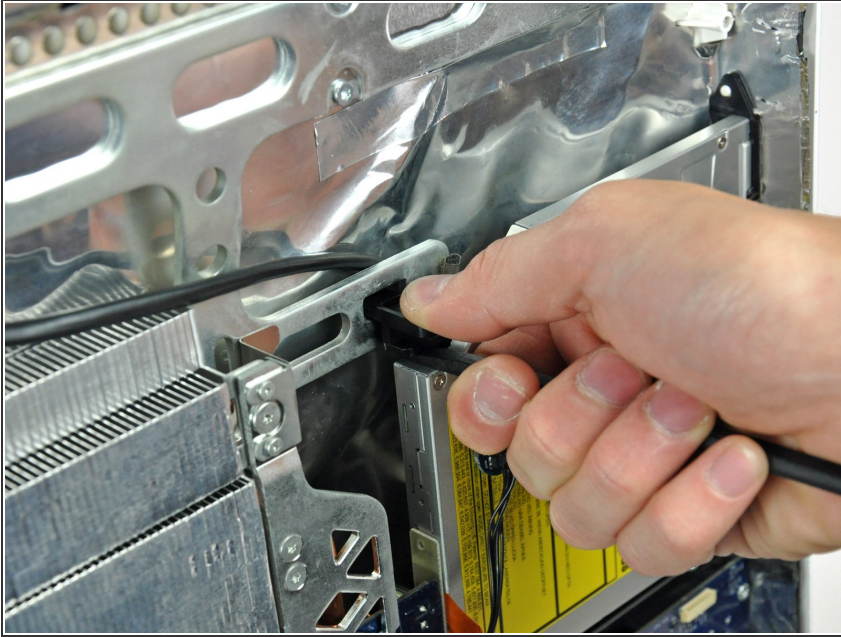
- Remove the two T6 Torx screws holding the optical drive connector to the logic board.

Step 3



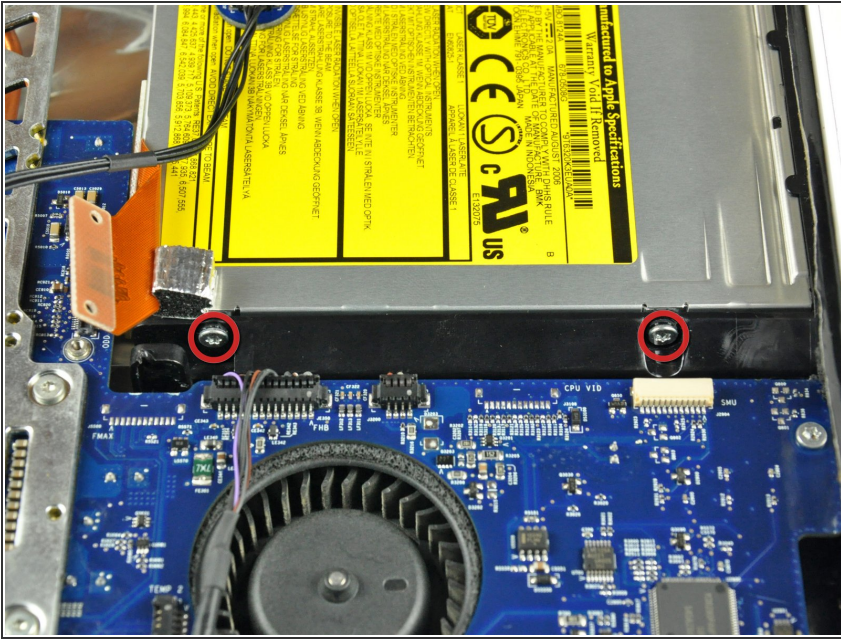
- Use the flat end of a spudger to pry the optical drive connector up off the logic board.
- ⓘ It is helpful to insert the spudger under the top or bottom edge of the optical drive connector and twist to separate the connector from the logic board.

Step 4



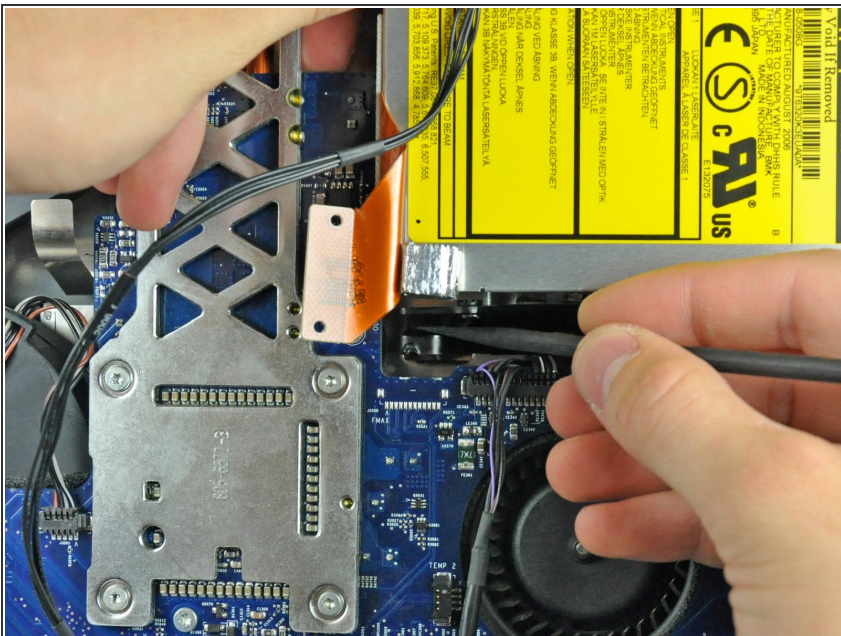
- ❗ Apple's "engineers" didn't learn much about deflection and material stiffness when they went to "college", so this optical drive is particularly difficult to remove because the bracket flexes too much. The next few steps require some patience and a good amount of force.
- Insert the flat end of a spudger into the gap between the optical drive and its bracket until it contacts the chassis.
- Grab the spudger as close to the surface of the optical drive as you can, then depress the release tab with your thumb while pulling toward yourself.
- ❗ The wedge shape of the spudger may cause it to slip out of the gap toward yourself. Be sure to press the spudger in toward the rear case while squeezing the release tab.

Step 5



- ❗ To avoid the screws falling behind the logic board, lay your iMac stand-side down on a table.
- Remove the two T10 Torx screws from the lower edge of the optical drive.

Step 6



- Use the flat end of a spudger to press the bottom edge of the lower optical drive bracket release tab toward the lower edge of the iMac.
- ❗ The optical drive should now be free from the rear case.
- Maneuver the optical drive out of the rear case, minding the two plastic pins molded into the rear case near the open end of the optical drive that can break off.

Step 7



- Maneuver the optical drive out of the rear case, minding the two plastic pins molded into the rear case near the open end of the optical drive that can break off.

To reassemble your device, follow these instructions in reverse order.