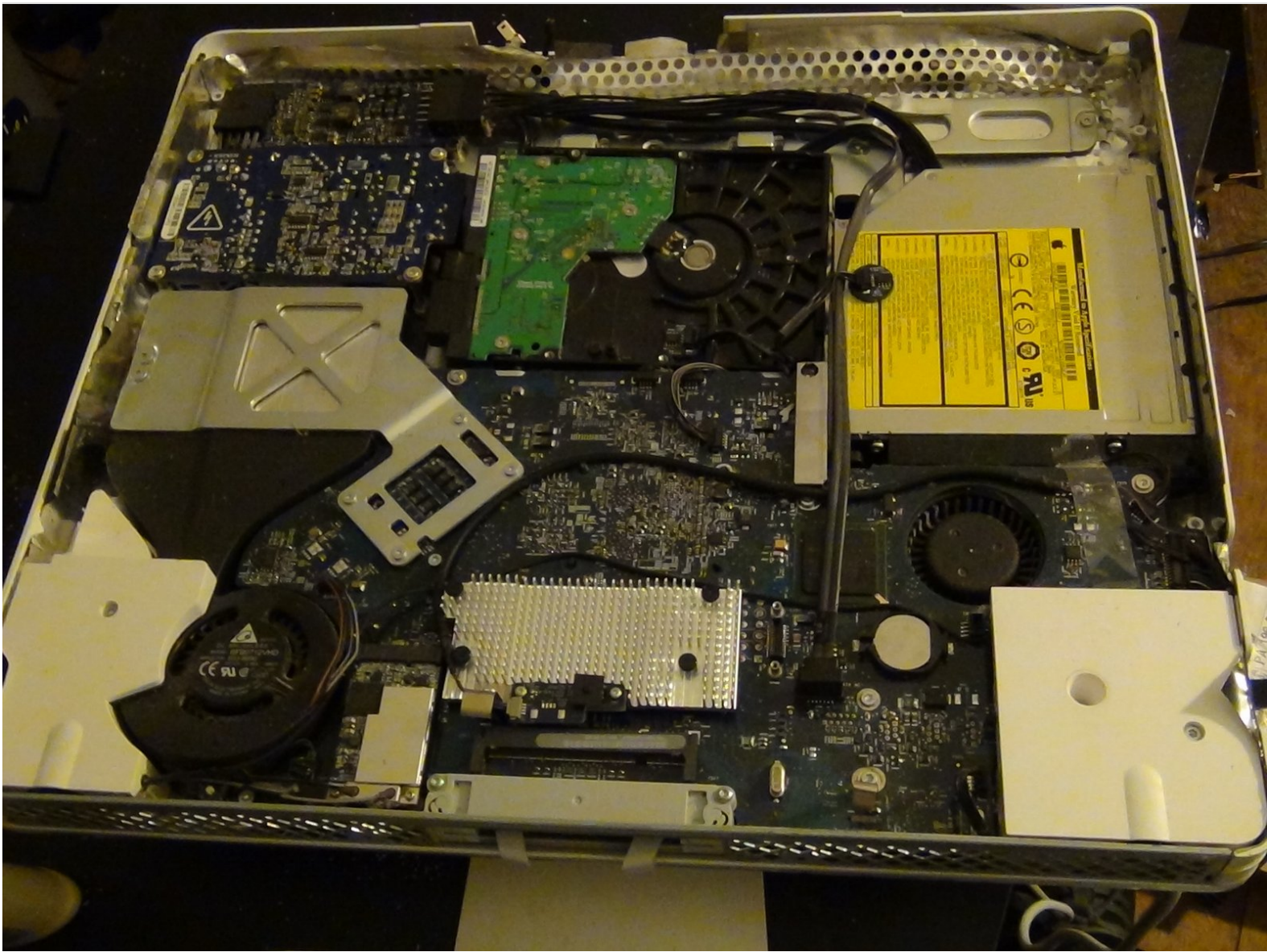




iMac Intel 17" UniMac Version 2 Screen Adapter Replacement

This will demonstrate how to install the UniMac V2 Adapter. This enables the usage of a standard laptop style 17" in an Intel iMac. This will also enable usage of a high resolution (1920x1200) LCD Panel. Available from www.realmacmods.com

Written By: [senordingdong](#)



INTRODUCTION

Unimac Version 2 Kit available from

<http://www.realmacmods.com>

Most likely reason for this product is to replace your LCD that has been plagued with the all too common vertical line issue.

This is a pretty easy install, but it is very important that you follow some safety guidelines.

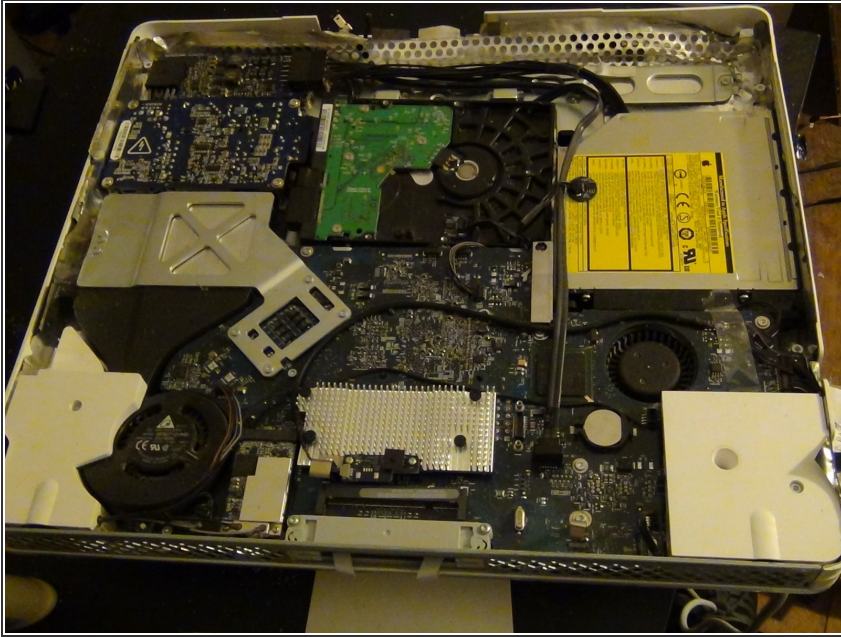
First and foremost DO NOT work on the iMac if it is plugged in. The power supply is exposed and extremely dangerous. Wait a minimum of 30 minutes after unplugging it to give the power supply enough time to discharge.



TOOLS:

- [Essential Electronics Toolkit](#) (1)
-

Step 1 — UniMac Version 2 Screen Adapter



- Step one is disassembly, i am not going to go into that in this guide. It is very easily available elsewhere on the internet. That being said, dissassemble to the point where the screen is removed. be sure to remove the lvds cable as well

Step 2



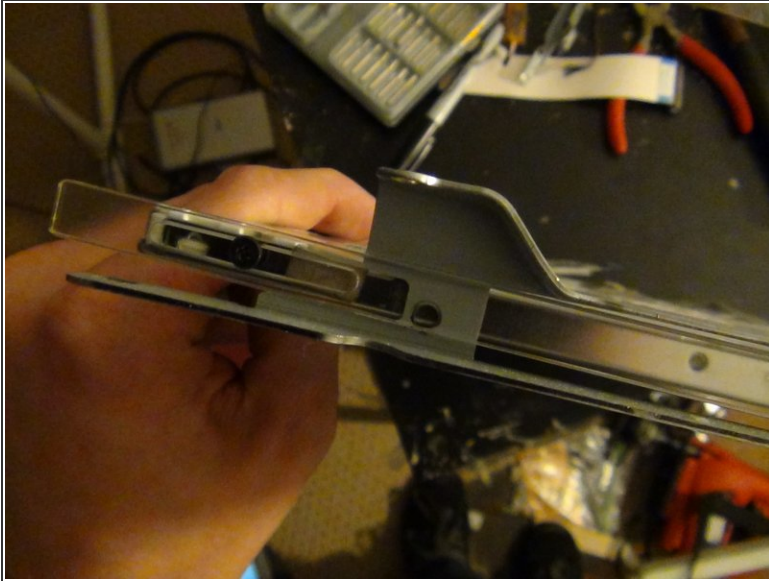
- What you will need for this repair.
- Contents of UniMac V2 Kit: Unimac V2 Adapter board, FFC Cable, Y-Cable, Plastic mounting spacers. 4 small black screws.
- Other Items: Compatible LCD Panel, Insulation Tape (Packing tape works well).

Step 3



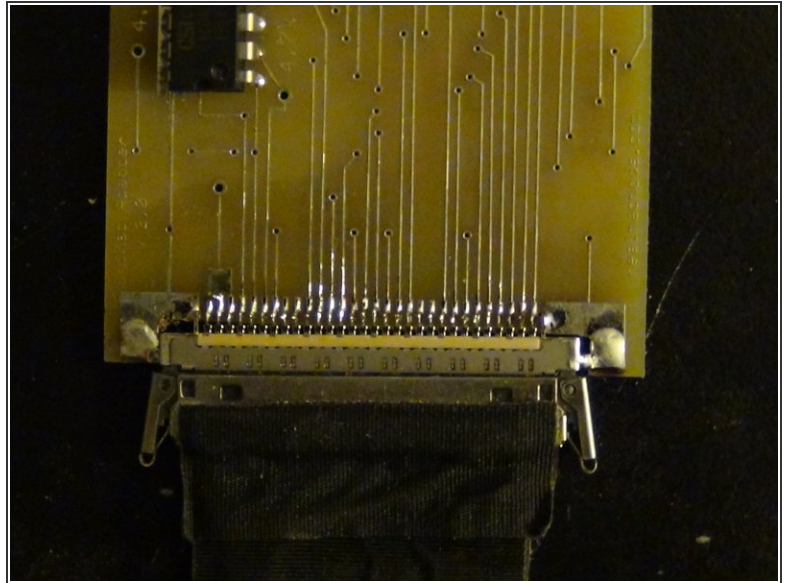
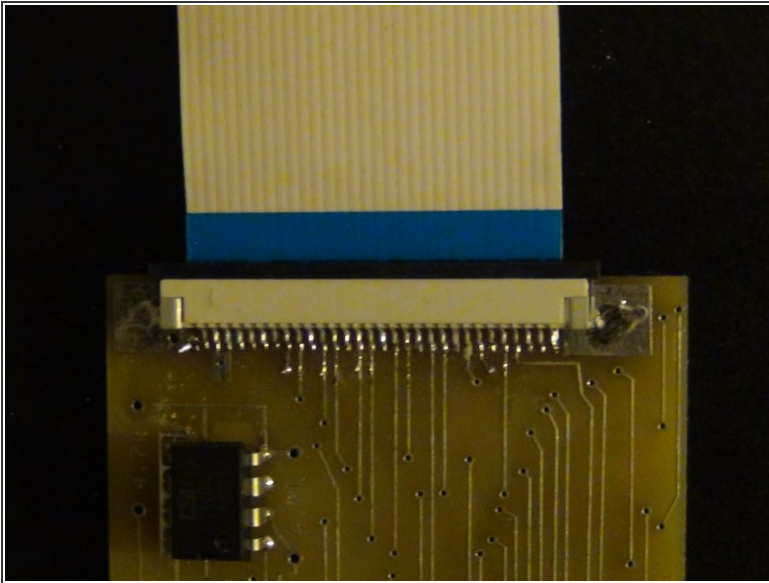
- Next we will remove the metal screen brackets. Each side is held on by 2 Torx screws. Remove these screws, remove the brackets, and put them aside. You will need 2 of them later.

Step 4



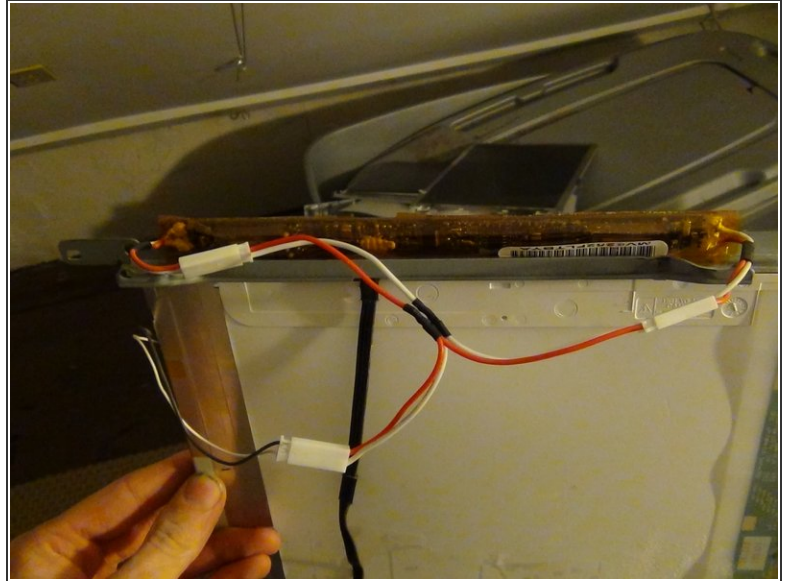
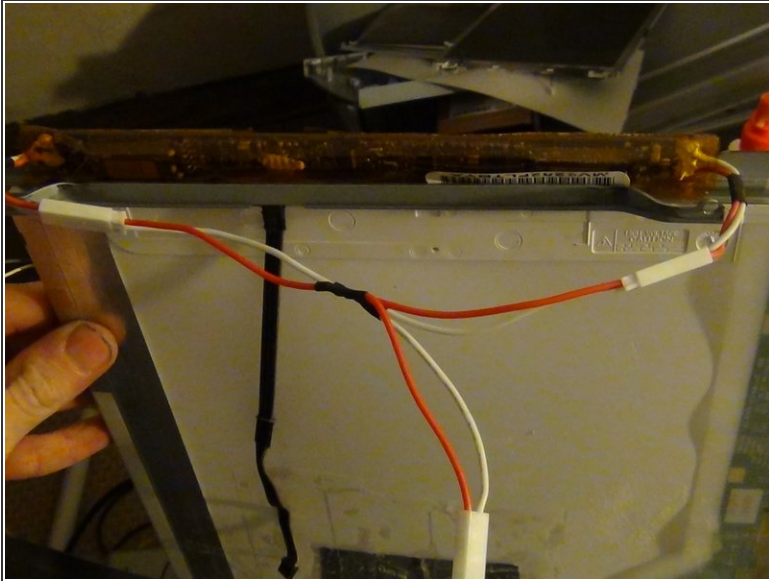
- New screen assembly
- In your Unimac Version 2 kit, you will find 2 plastic spacers, one is much larger than the other. The thinner one will go on the "inverter side" of the screen, the other will go on the opposite side.
- You will also find 4 small black screws.
- Use the small screws to attach the non inverter spacer as shown in the picture. It has slots to allow for height adjustment, no matter how you mount it, it's going to be close to centered, but later in the guide we will get it perfect. Attach the metal bracket to the spacer with the torx screws as shown.
- Take the inverter (metal) bracket, and remove the inverter, but don't pull out the cable. (you will just have to put it back in place anyway) It is held in with some adhesive and should come out easily, just don't break it.
- Slide the metal bracket in place, and secure the spacer as shown. Put the inverter back in its original place.

Step 5



- Adapter Installation:
- Install the pre-folded(dont unfold it) FFC Cable into the replacement LCD screen as shown. If you happen to have a non-locking style screen connector, you must cut off the lock tabs on the FFC cable. I highly recommend getting a screen with a locking connector.
- Install the UniMac Adapter as shown. The FFC cable will slide into the receptacle, it is a standard "slide lock" style receptacle.
- Use the double sided adhesive on the underside of the adapter to attach it to the back of the lcd screen.
- Install the lvds cable into the adapter. You will feel it lock into place. Be sure not to attempt to install the cable upside down. The contacts are on the bottom, install the cable as such.
- Cover all connections with clear plastic tape, to ensure nothing can possibly short anything else out. DO NOT IGNORE THIS STEP.

Step 6



- Attach the included Y-Cable as shown
- Install the now assembled screen, just as the old one came out. It should line up with the plastic screw holes in the iMac.
- Install the LVDS cable to the board, just as it came off. Plug in the inverter cable.
- Put the front of the iMac back on. Take note of any height adjustments need to be made to center the display area. You may not need to make any. If necessary remove the screen and make your adjustments by loosening the small black screws, moving the spacer, and tightening the screws. Test and repeat as necessary.

Step 7



- Check, double check, and triple check everything. Finish reassembly. Plug it in and hit the power button. If you did everything correctly you will be greeted with that wonderful Apple, and best of all, no vertical lines on your screen.
- If not review the guide and see where you may have gone wrong.

To reassemble your device, follow these instructions in reverse order.