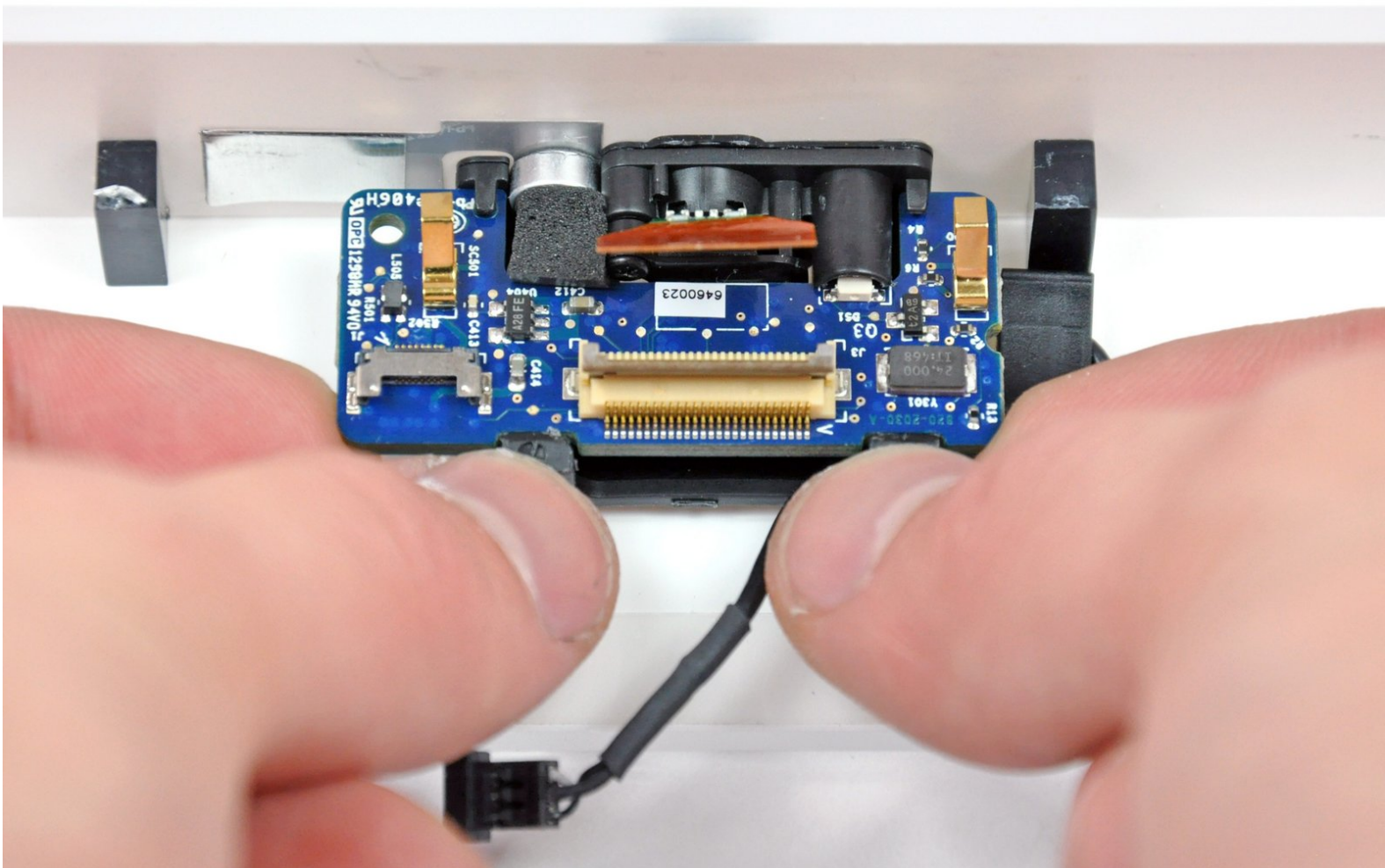




# iMac Intel 20" EMC 2105 and 2118 Camera Board Replacement

Written By: Walter Galan



# INTRODUCTION

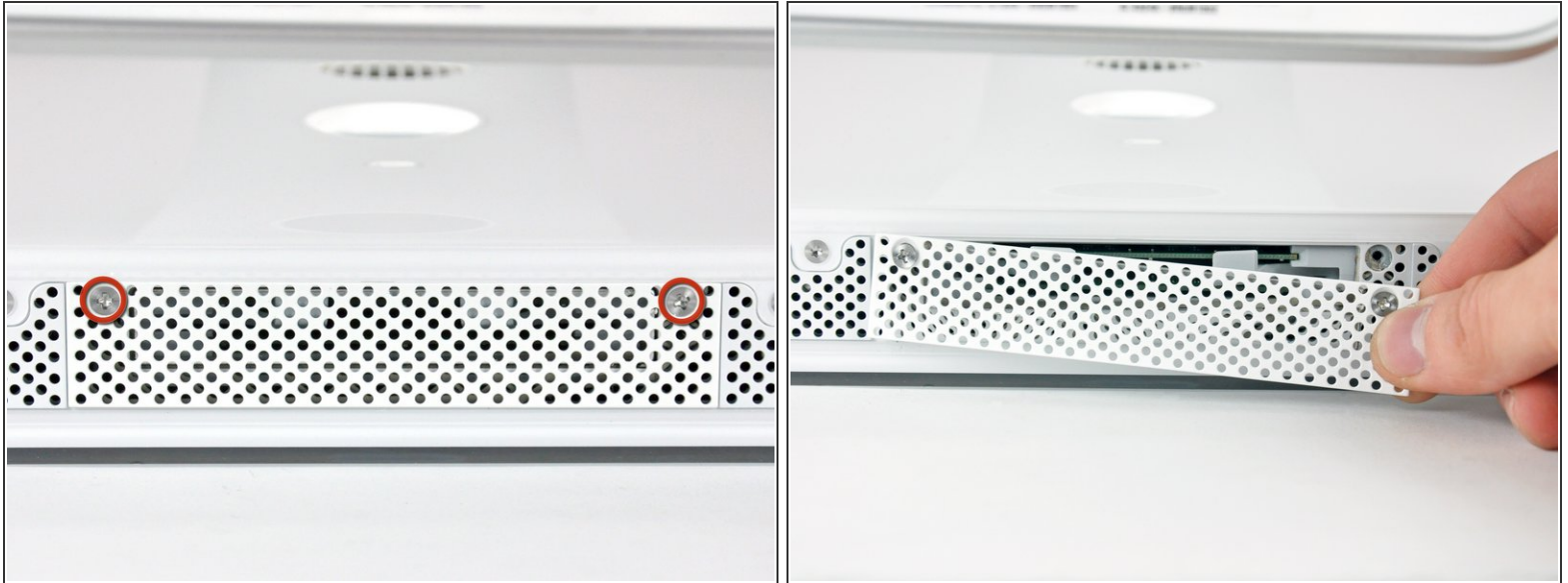
Replace a faulty camera board to regain iSight functionality.

---

## TOOLS:

- [Phillips #1 Screwdriver](#) (1)
  - [Plastic Cards](#) (1)
  - [Spudger](#) (1)
  - [T8 Torx Screwdriver](#) (1)
-

## Step 1 — Access Door



- Loosen the two Phillips screws securing the access door to your iMac.

 Both screws remain captive within the access door.

- Remove the access door.

 **Before beginning the repair, unplug the computer and press and hold the power switch for 20-30 seconds, to discharge internal capacitors.**

## Step 2 — Front Bezel



- Remove the following screws along the lower edge of your iMac:
  - Three 6 mm T8 Torx screws
  - One 8 mm T8 Torx screw (Right side of the RAM slot on 2105)

## Step 3



- ❗ Re-orient your iMac so it sits upright on the stand.
  - Insert a plastic card up into the corner of the air vent slot near the top of the rear case.
  - Push the card toward the top of the iMac to release the front bezel latch.
  - Pull the front bezel away from the rear case.
  - Repeat this process for the other side of the front bezel.
- ❗ It may be necessary to apply several layers of duct tape to the top of the access card to aid in releasing the latches. Or use two cards for the additional thickness.
  - If the bezel refuses to release, try lifting the lower edge of the front bezel slightly away from the rear case (detailed in the next few steps) and repeat the latch release process.



## Step 4



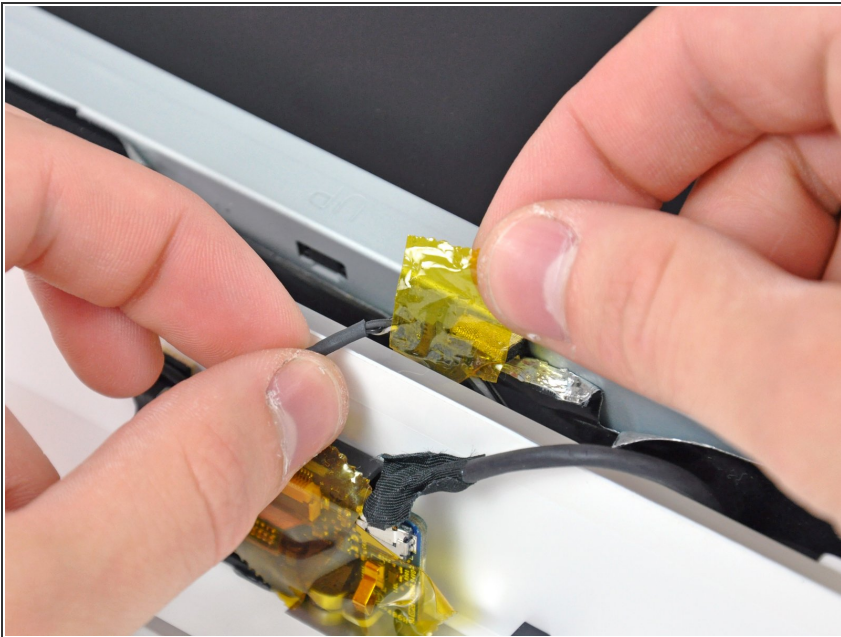
- Lay your iMac stand-side down on a flat surface.
- To lift the front bezel off the iMac, simultaneously:
  - Use your thumbs to press in the RAM arms and hold the iMac down.
  - Use your index fingers to pull the small bridge of material on the front bezel toward yourself.
  - Pull the front bezel up with your index fingers.
- Once the small bridge of material has cleared the RAM arms, lift the front bezel by its lower edge just enough to clear the bottom edge of the rear case.

## Step 5



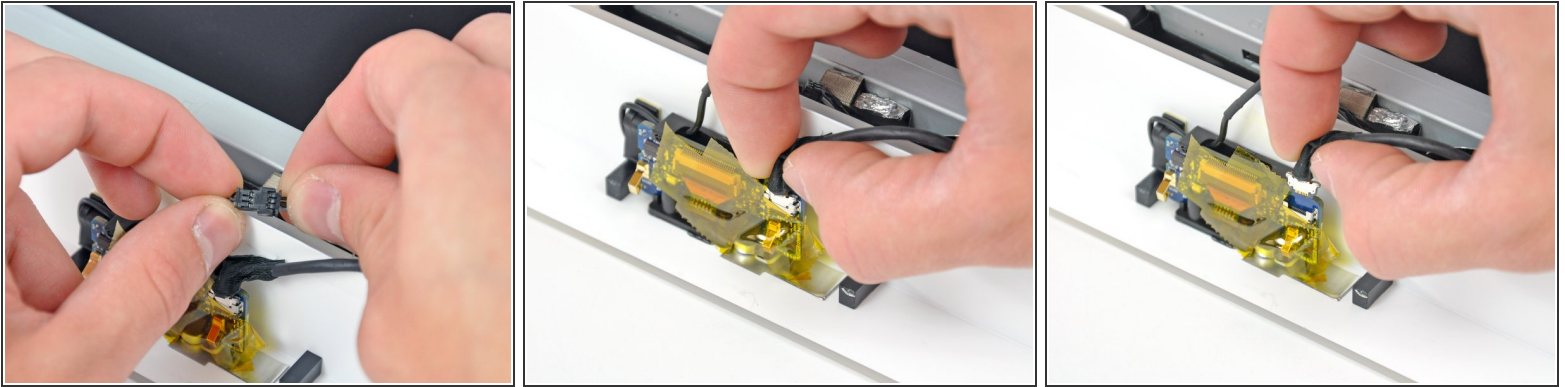
- Lift the front bezel off the rear case and rotate it away from the bottom edge of the iMac, minding the camera and microphone cables still attached to its upper edge.

## Step 6




- ⓘ If necessary, remove the strip of tape covering the microphone cable connector.
- ★ The microphone connector is located near the inside of top edge of your iMac.

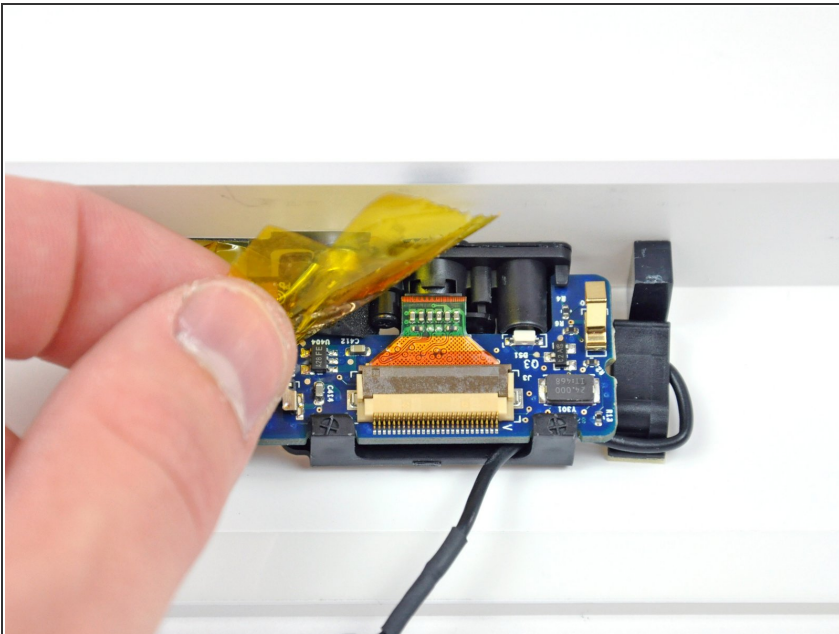
## Step 7





- Disconnect the microphone cable.
- Disconnect the camera cable by pulling its connector away from the socket on the camera board.

 The camera cable connector and socket are delicate and easily bent. Remove with caution.

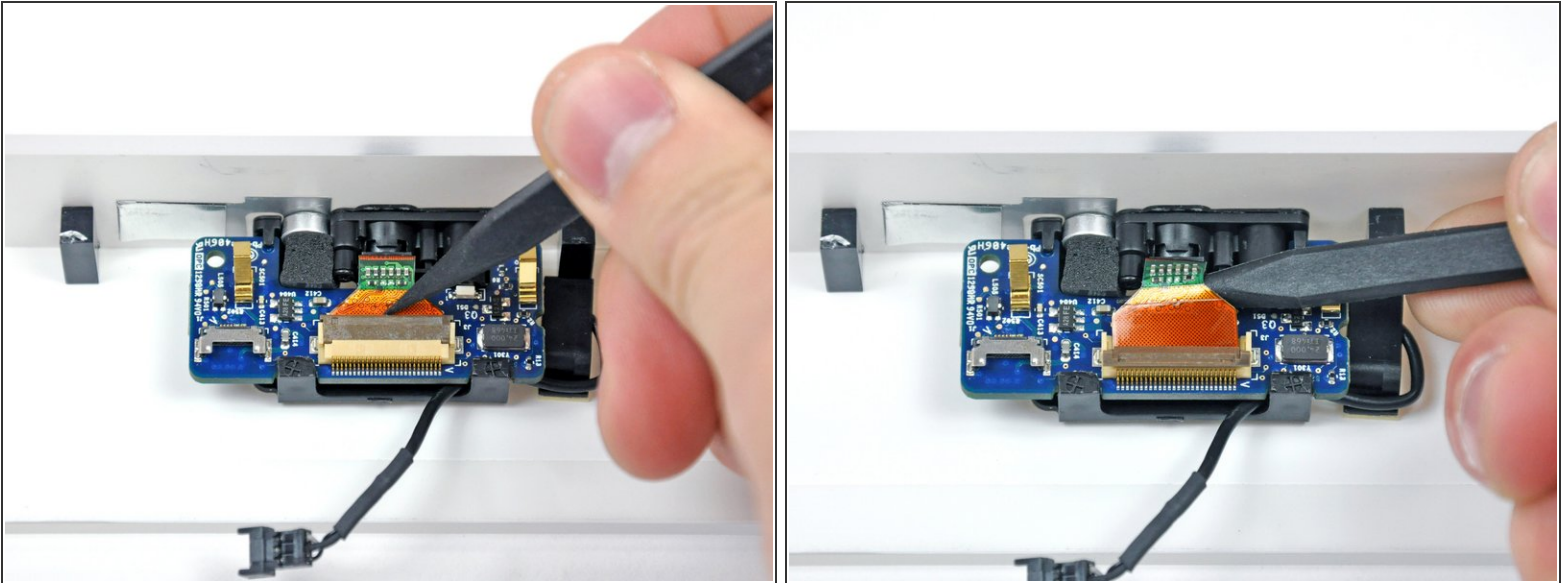
## Step 8 — Camera Board



-  If necessary, remove the strips of tape covering the camera board.
-  Don't forget to reapply tape to the face of the camera board to avoid electrical shorts.

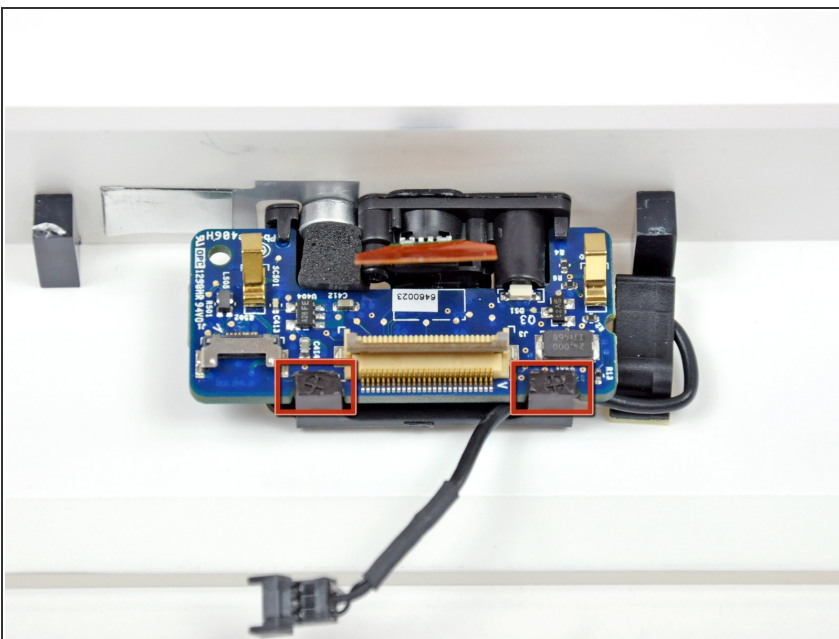


## Step 9



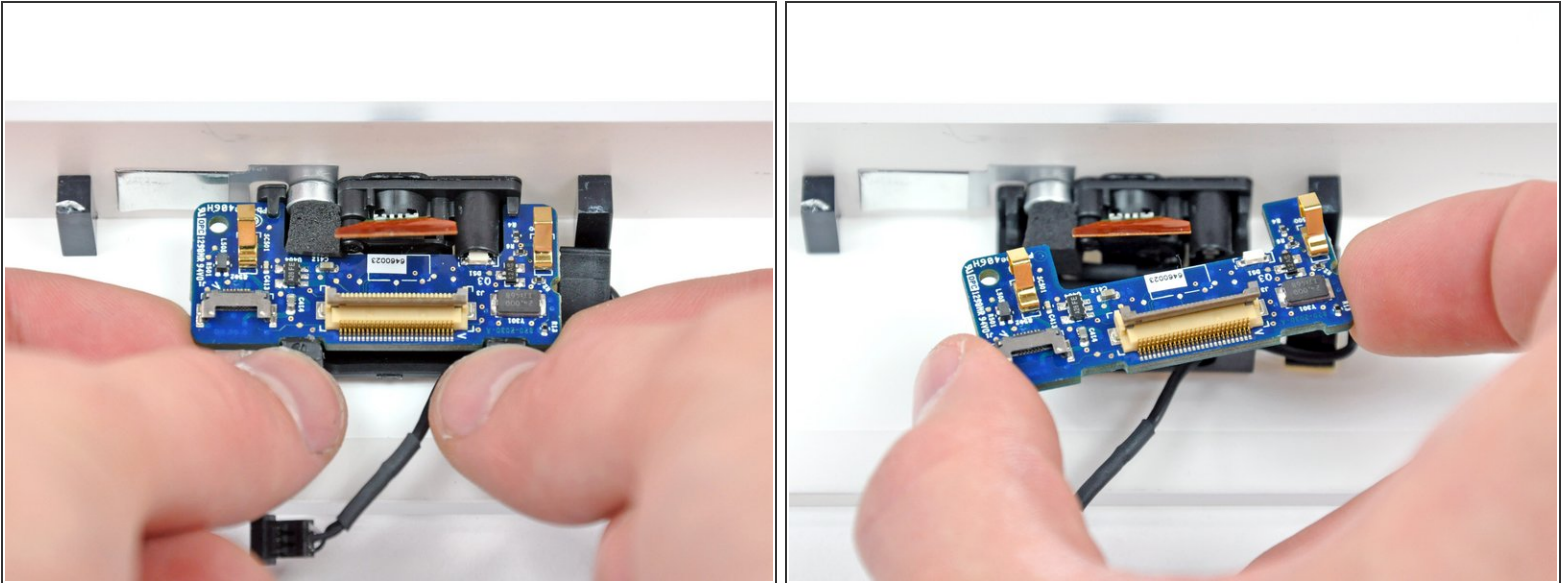
- Use the tip of a spudger to flip up the camera ribbon cable retaining flap.
- ⓘ Flip the tab away from the front face of the front bezel.
- Use the tip of a spudger to pull the camera ribbon cable away from its socket on the camera board.

## Step 10



- ⓘ Rather than being held down by screws, the camera board is held down by a black plastic bracket attached to the front bezel.
- In the next step, you will rotate the two black retaining clips (shown in red) away from the camera board to free it from the front bezel.

## Step 11



- Use your thumbs to simultaneously rotate both retaining tabs away from the camera board while pushing the board up from either side with your index fingers.
- Remove the camera board from the front bezel.

To reassemble your device, follow these instructions in reverse order.