



iMac Intel 20" EMC 2105 and 2118 Power On Button Replacement

Short guide for replacing the power on button.

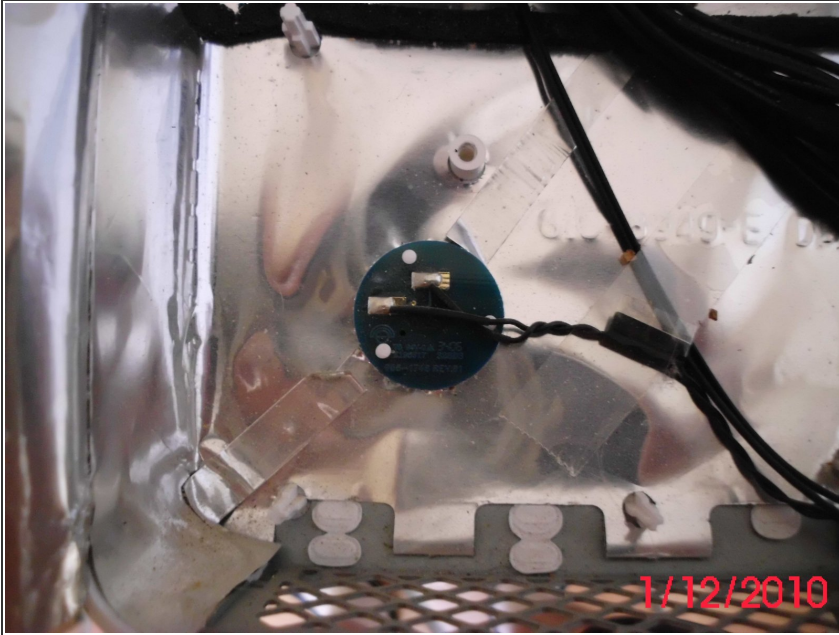
Written By: mayer



INTRODUCTION

How to replace the power button in an intel iMac.

Step 1 — Power On Button



- To get to the power button first remove the hard drive fan as seen in other guides.

Step 2



- This is a picture of the button in place with the connector to the logic board removed.
- There are three plastic pins protruding up from the main back case that the button fits over. They appear to be slightly melted and mashed to hold it in place. I used a pocket knife to pry it up and off the posts.

Step 3



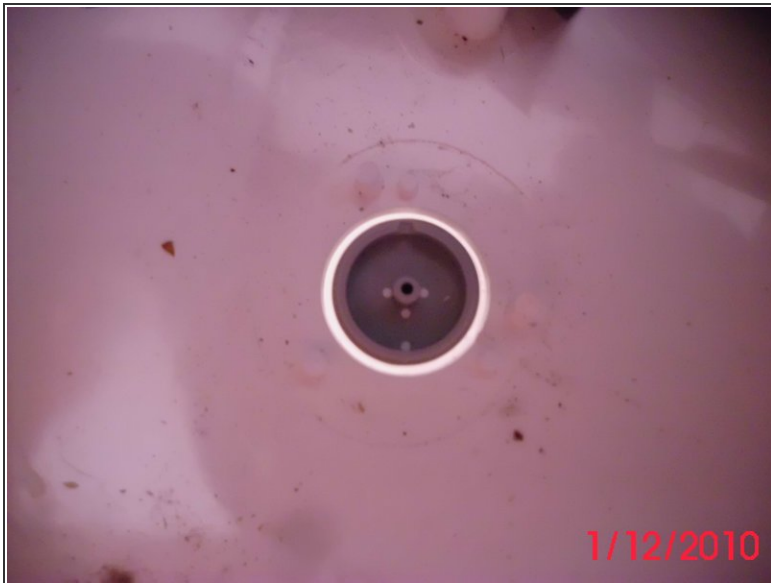
- Here it is with the back plate of the button pried off. This exposes a white plastic washer under it.

Step 4



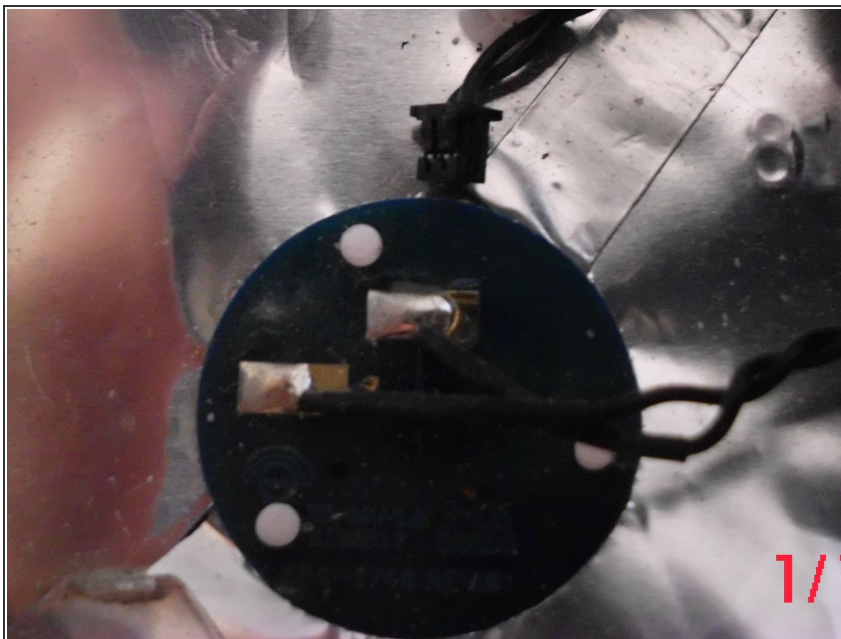
- The center of the washer has a center locking pin to correctly place it on the back of the button. The washer is concave and the concave side faces the button, This gives the button a spring to it so that it will pop back out.

Step 5



- This is the back of the button that will now just push out. Picture #2 is with the button removed.

Step 6



- Test the button to see if it works.
- After replacing the button, use something (like a low temperature soldering iron) that will melt the tops of the white plastic pegs to secure the button in place.

To reassemble your device, follow these instructions in reverse order.