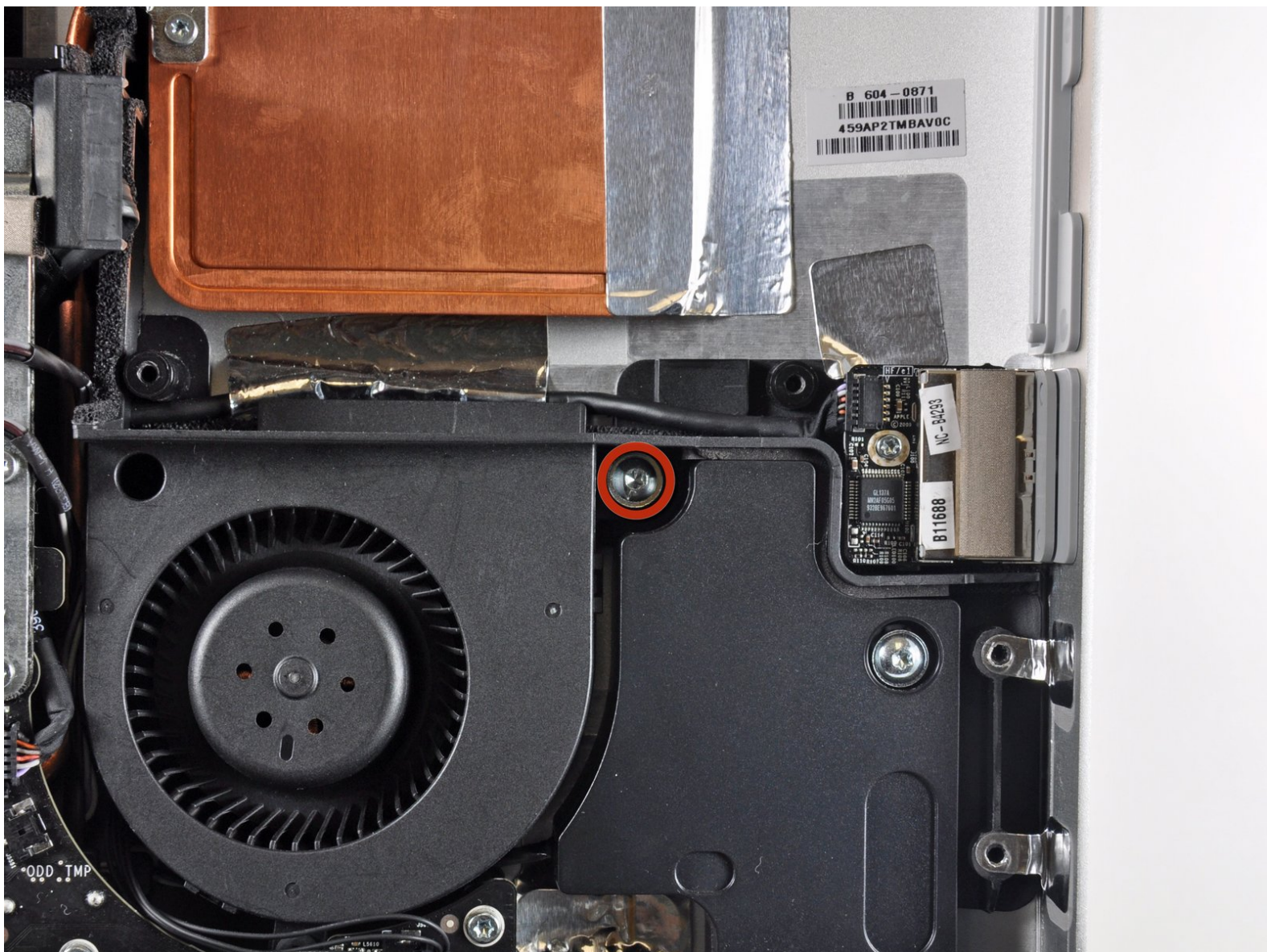




# iMac Intel 21.5" EMC 2308 Optical Drive Fan Replacement

Written By: Andrew Bookholt



# INTRODUCTION

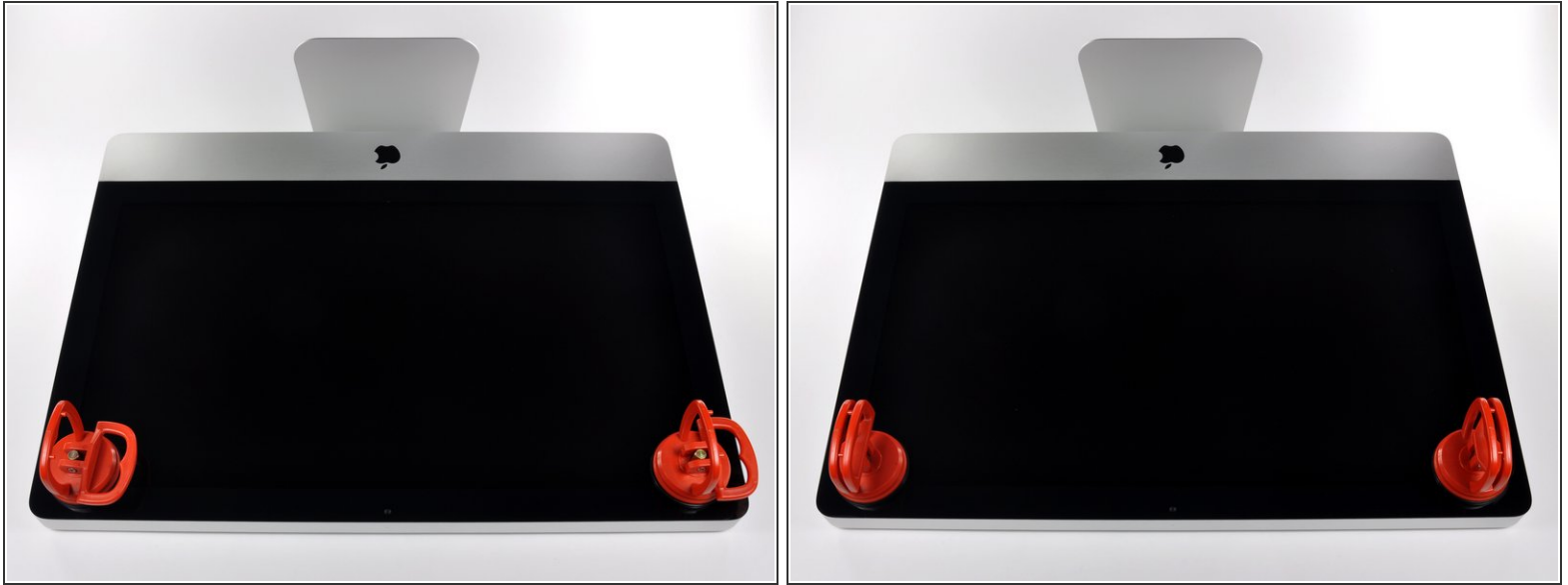
Replace a burned-out optical drive fan to keep temperatures down.



## TOOLS:

- [Heavy-Duty Suction Cups \(Pair\)](#) (1)
  - [Spudger](#) (1)
  - [T10 Torx Screwdriver](#) (1)
-

## Step 1 — Glass Panel



- i** Before beginning, unplug your iMac and lay it on a soft surface as shown.

  - Stick a suction cup near each of the two top corners of the glass panel.
- i** To attach the [suction cups](#) we sell, first position the suction cup with the movable handle parallel to the face of the glass panel. While lightly holding the suction cup against the glass, raise the movable handle until it is parallel with the other handle.

  - If your suction cups refuse to stick, try cleaning both the glass panel and the suction cup with a mild solvent.

## Step 2



- Gently lift the glass panel perpendicular to the face of the LCD enough to clear the steel mounting pins attached along the underside of the top edge of the glass panel.
  - Pull the glass panel away from the lower edge of the iMac and carefully set it aside.
- ✦ During reinstallation, be sure to meticulously clean the inside of the glass panel and the face of the LCD as any dust or fingerprints trapped inside will be annoyingly visible when the machine is turned on.

## Step 3 — Display




- Remove the eight 8 mm T10 Torx screws securing the display to the outer case.
- i** The last two pictures are detail shots of each side of the display.



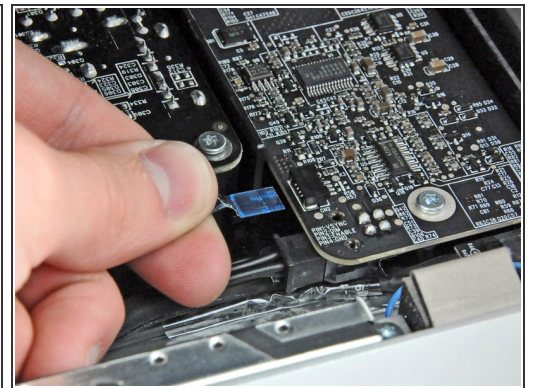
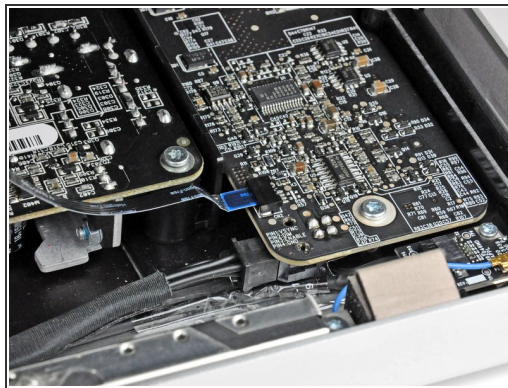
## Step 4




- Slightly lift the top edge of the display out of the outer case.

 Do not lift it too much. There are several cables attaching the display to the logic board.

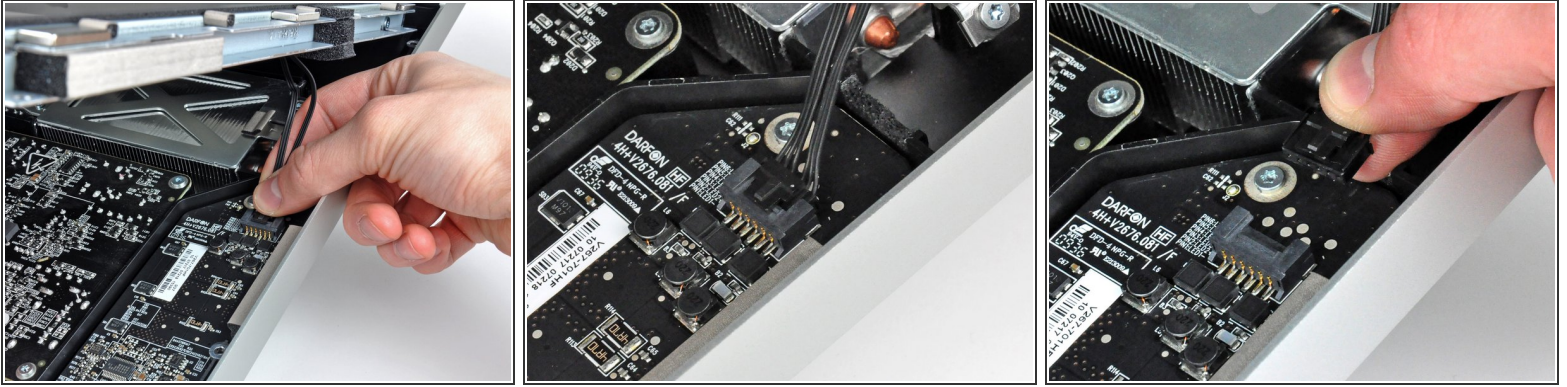
## Step 5



- Pull the vertical sync ribbon cable out of its socket on the LED driver board near the top left corner of your iMac.

 The vertical sync ribbon cable has a ZIF style end, but the socket has no lock or retaining flap. Simply pull the cable away from its socket toward the optical drive side of the iMac to disconnect it from the LED driver board.

## Step 6



- Rotate the display out of the outer case enough to disconnect the LED backlight power cable from the LED driver board.
- ⓘ Disconnect the LED backlight power cable by depressing the locking mechanism while pulling the connector away from its socket (toward the bottom edge of the iMac).

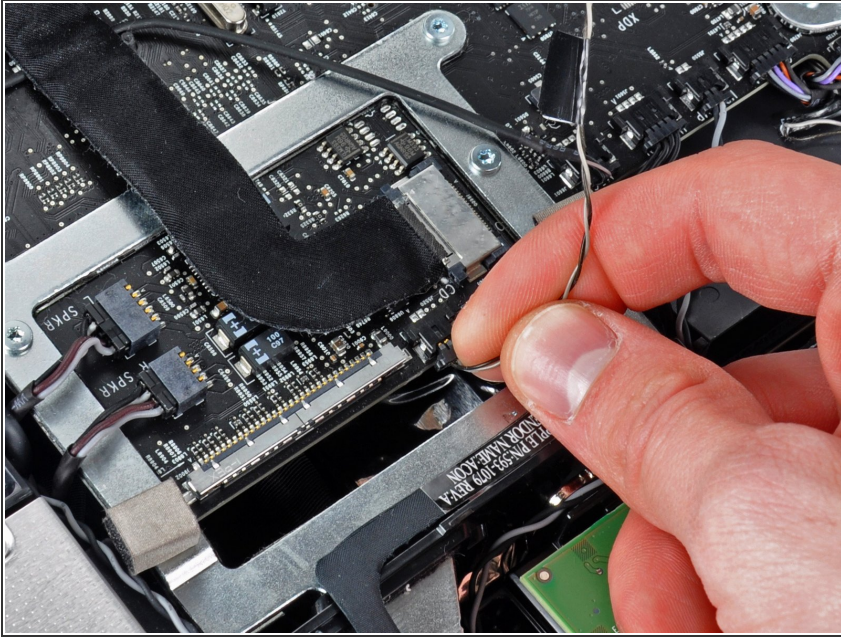
## Step 7



- Squeeze the two display data cable connector arms together to unlock it from its socket on the logic board.
  - Pull the display data cable connector away from its socket on the logic board.
- ⚠ Be careful when disconnecting and reconnecting this cable, as it is easily damaged.



## Step 8



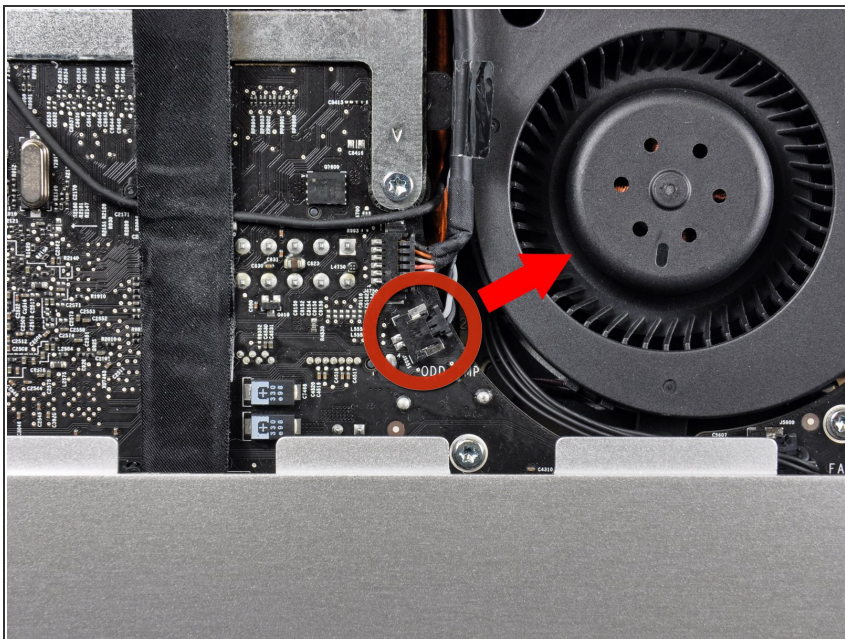
- Disconnect the LCD thermal sensor cable connector from its socket on the logic board.
- ⓘ If your fan is spinning full speed after completion, check this connection or the hard drive's thermal sensor cable.

## Step 9



- Carefully pull the display toward the top edge of your iMac and lift it out of the outer case, minding any cables that may get caught.

## Step 10 — Optical Drive



- Pull the optical drive thermal sensor connector straight away from its socket on the logic board.

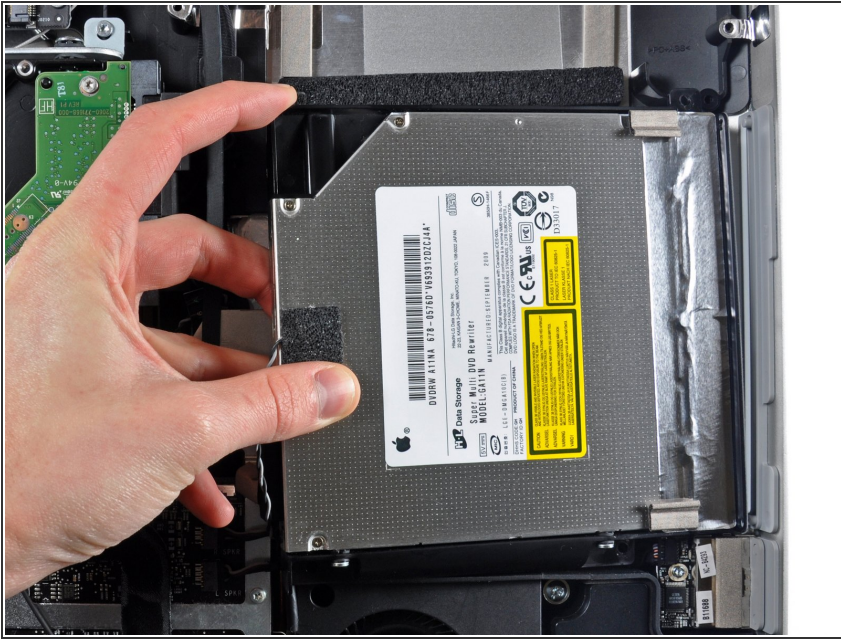
## Step 11



- Remove the four 9 mm T10 Torx screws securing the optical drive to the outer case.

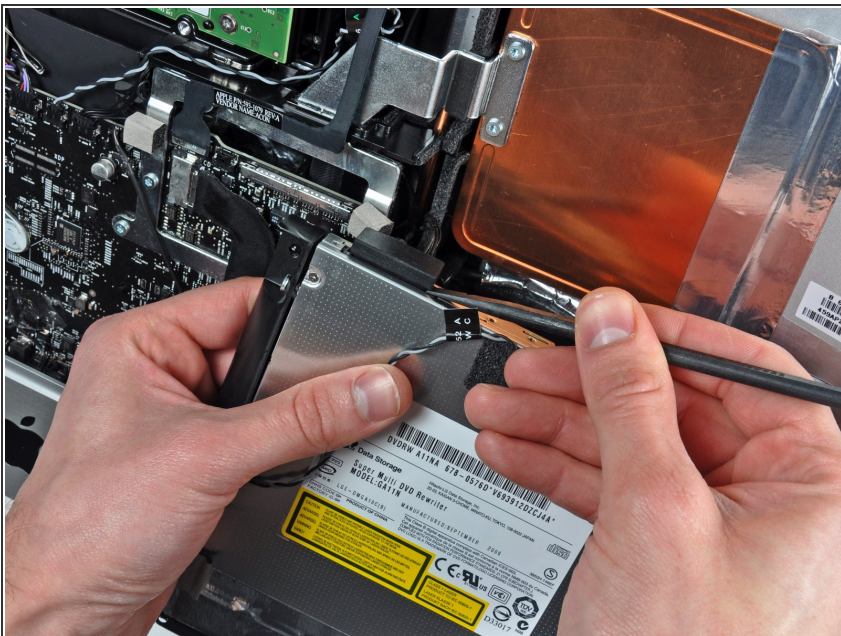


## Step 12



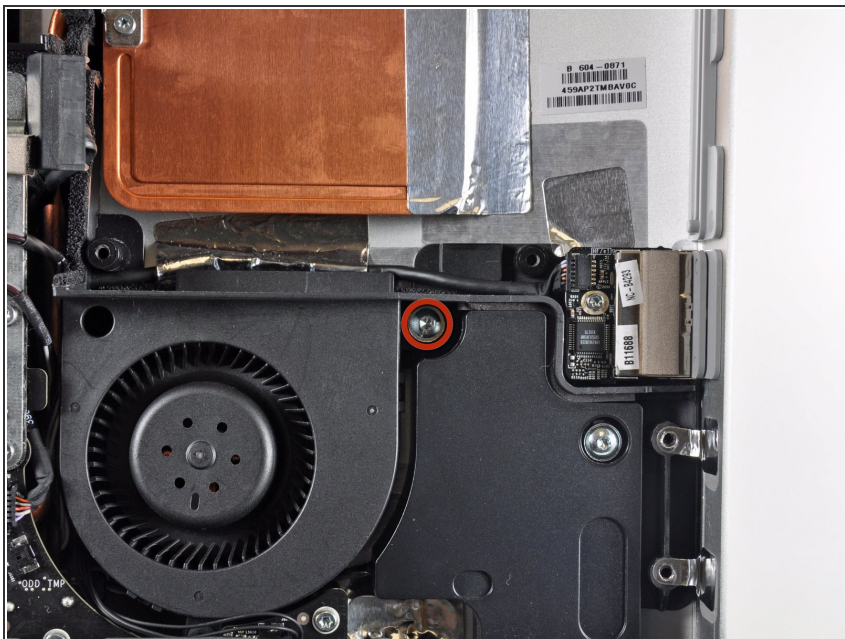
- Lift the inner edge of the optical drive and maneuver its connector past the frame attached to the logic board.
- Carefully pull the optical drive off its mounting pins on the edge of the outer case to gain clearance for disconnecting the optical drive cable.

## Step 13



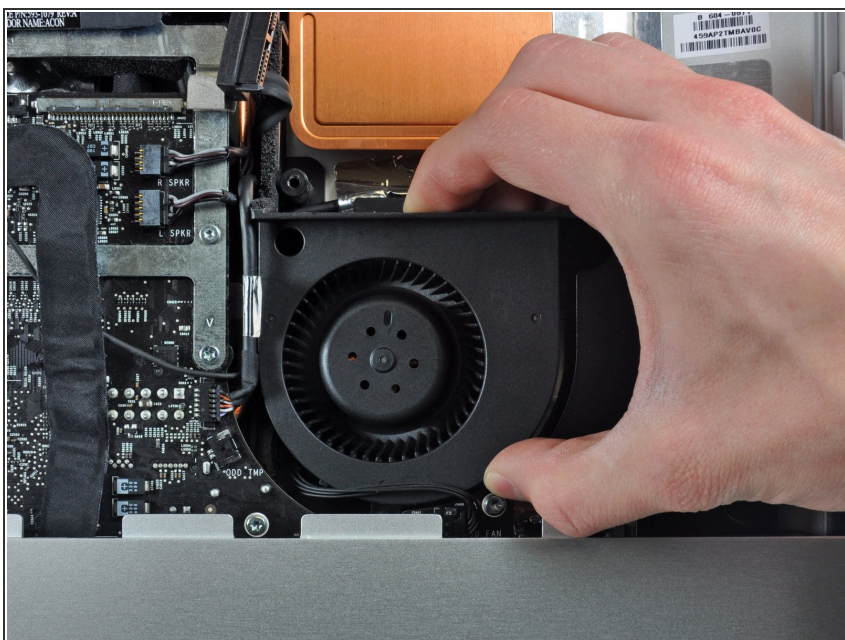
- Use the flat end of a spudger to help disconnect the optical drive cable.

## Step 14 — Optical Drive Fan



- Remove the single 13 mm T10 Torx screw securing the optical drive fan to the outer case.

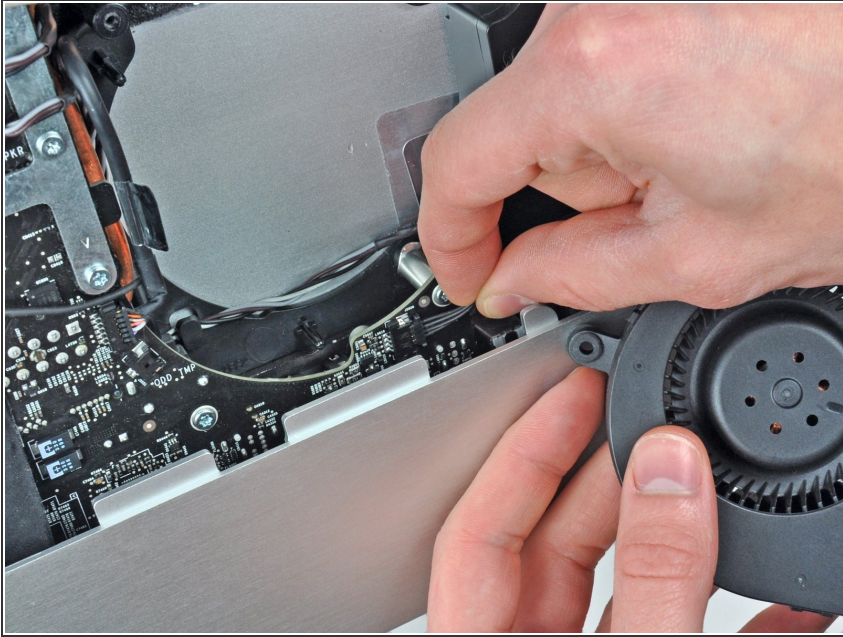
## Step 15



- Pull the optical drive off the pins attached to the outer case.



## Step 16



- Pull the optical drive fan connector away from its socket on the logic board.
- Remove the optical drive fan from the iMac.

To reassemble your device, follow these instructions in reverse order.