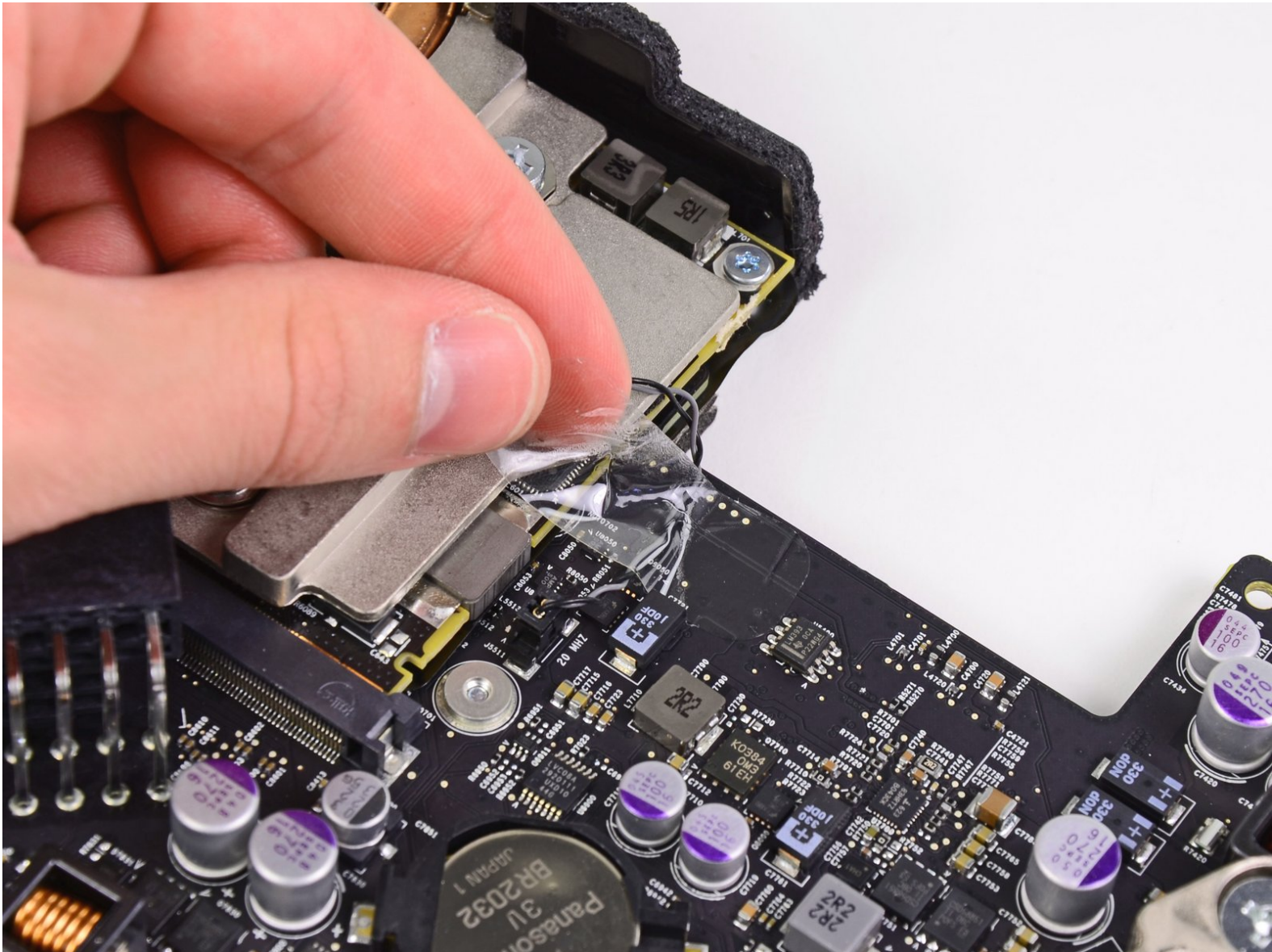




# iMac Intel 21.5" EMC 2389 GPU Assembly Replacement

Internal Prerequisite.

Written By: Andrew Bookholt



---

# INTRODUCTION

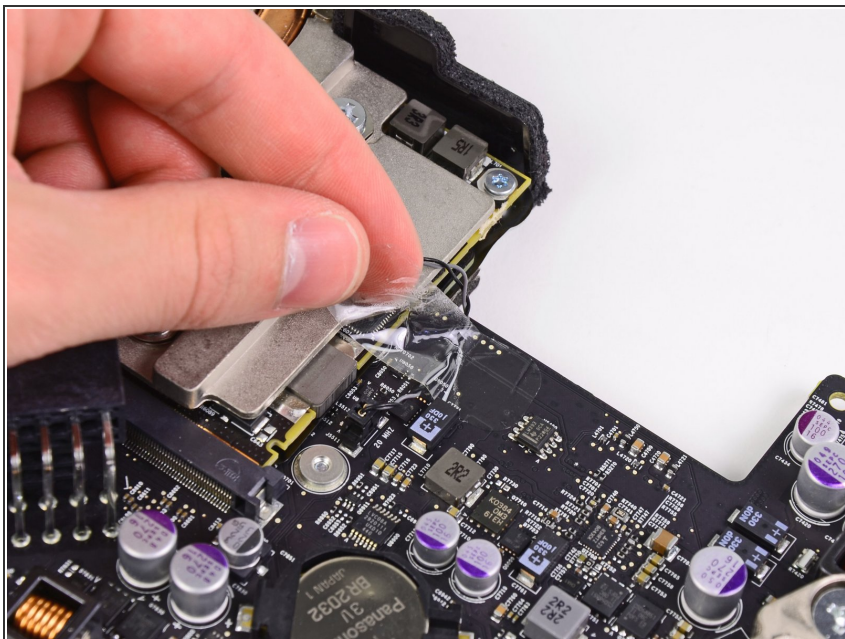
Internal Prerequisite.



## TOOLS:

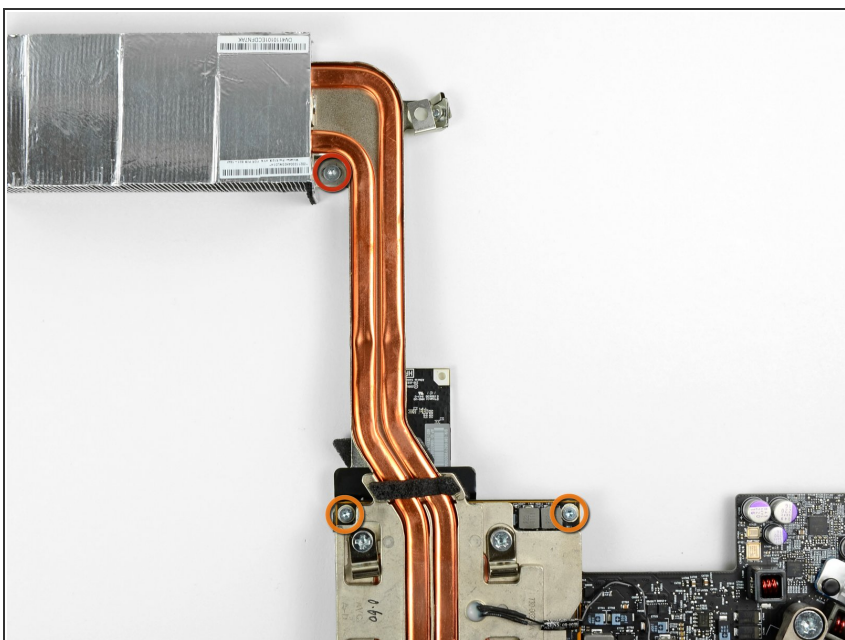
- [T8 Torx Screwdriver](#) (1)
  - [T10 Torx Screwdriver](#) (1)
-

## Step 1 — GPU Assembly



- Remove the strip of tape securing the GPU thermal sensor cable to the logic board.

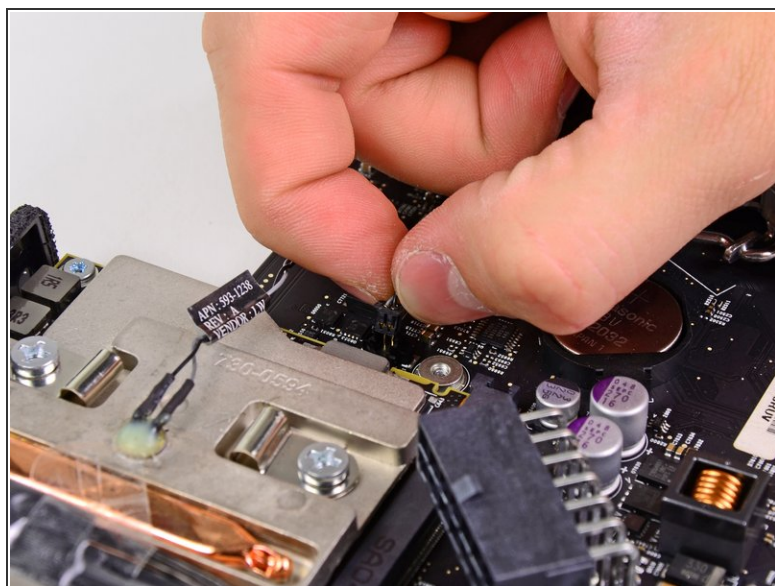
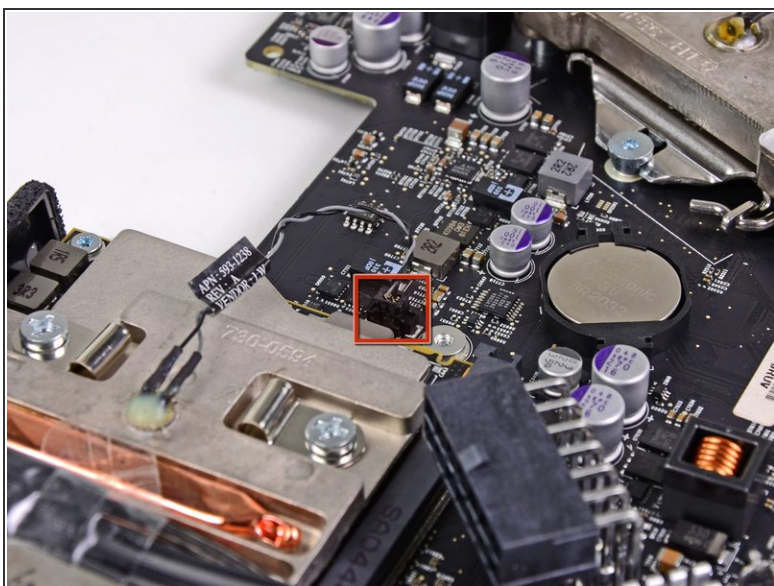
## Step 2



- Remove the following three screws:
  - One 4.2 mm T10 Torx screw
  - Two 5 mm T8 Torx screws



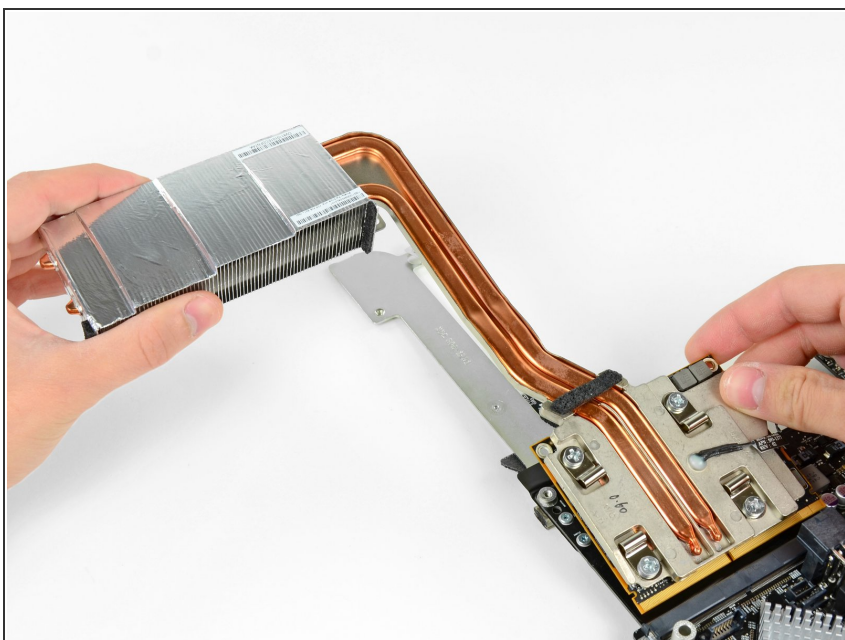
## Step 3



- Grab the GPU thermal sensor cable connector and pull it straight up and out of its socket on the logic board.

⚠ Do not pull the connector out by its cables.

## Step 4



- Lift the GPU heat sink slightly and pull the GPU board out of its socket on the logic board.

To reassemble your device, follow these instructions in reverse order.