



iMac Intel 21.5" EMC 2544 Hard Drive Assembly Replacement

Prereq only.

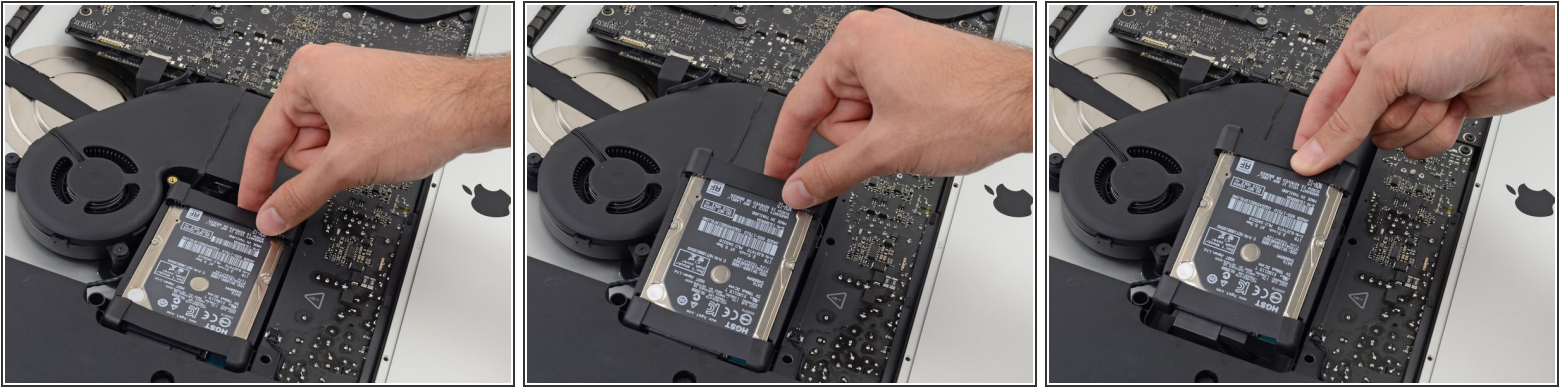
Written By: Sam Goldheart



INTRODUCTION

Prereq only.

Step 1 — Hard Drive Assembly



- Lift the hard drive from the edge nearest the fan and pull it slightly out of its recess.

⚠ The hard drive is attached by two cables, **do not** attempt to fully remove it from the iMac just yet.

Step 2



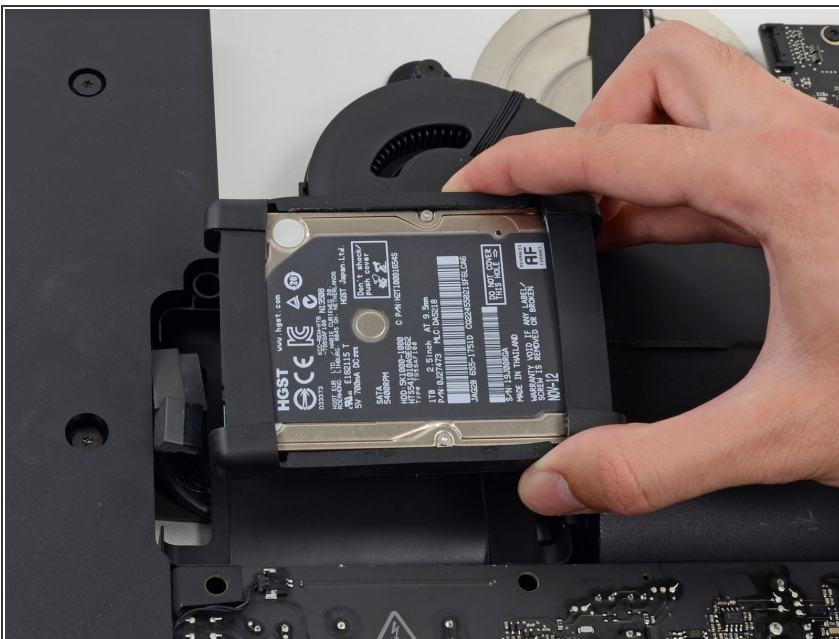
- Disconnect the SATA power cable.

Step 3



- Unplug the SATA data cable from the hard drive.

Step 4



- Lift and remove the hard drive from the iMac.

To reassemble your device, follow these instructions in reverse and use our [Adhesive Strips Guide](#) to reattach the display glass.

This document was generated on 2020-03-30 02:17:18 PM (MST).

