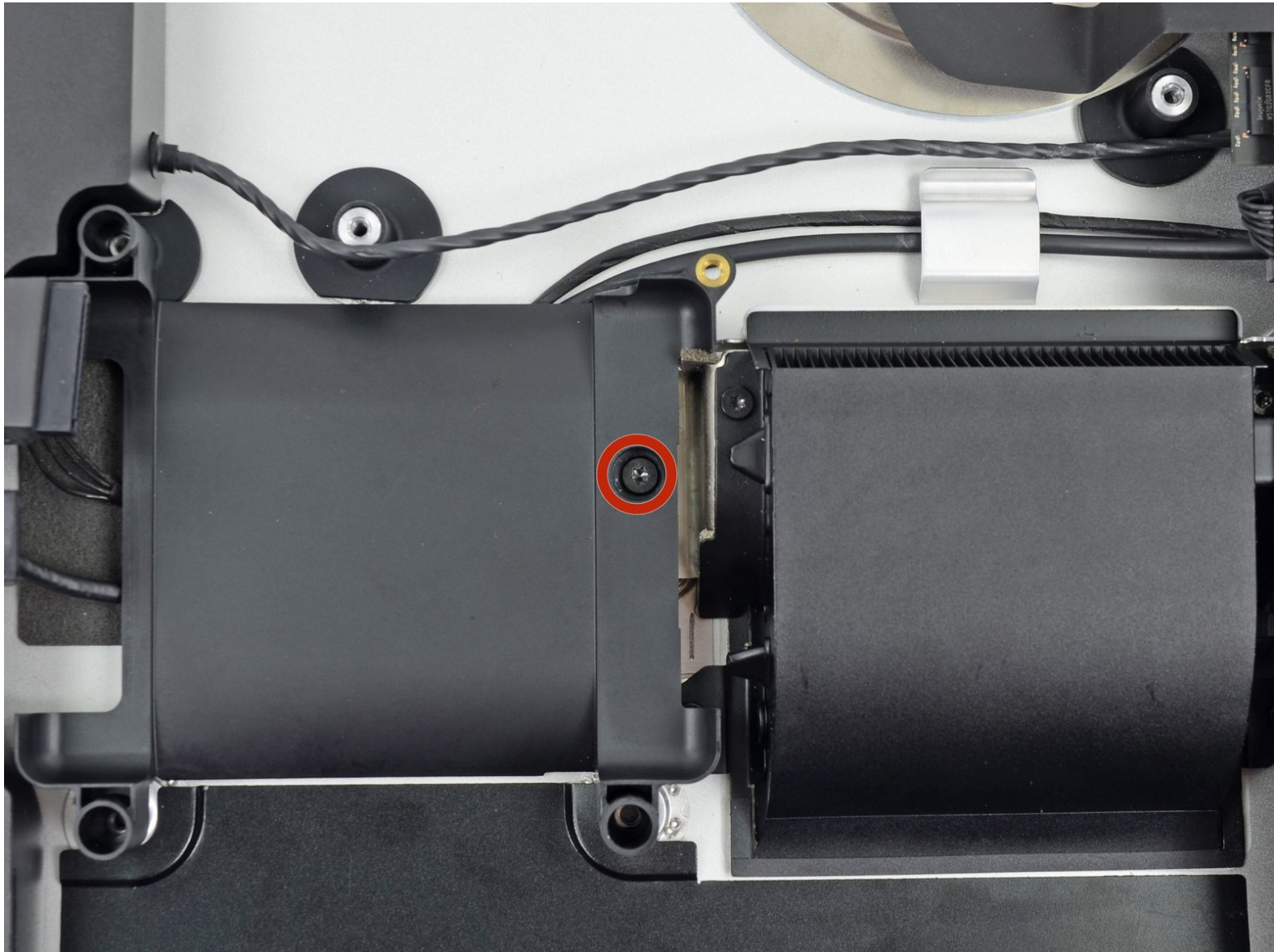




iMac Intel 21.5" EMC 2544 Hard Drive Tray Replacement

Prereq only for removing logic board, fan out.

Written By: Walter Galan



INTRODUCTION

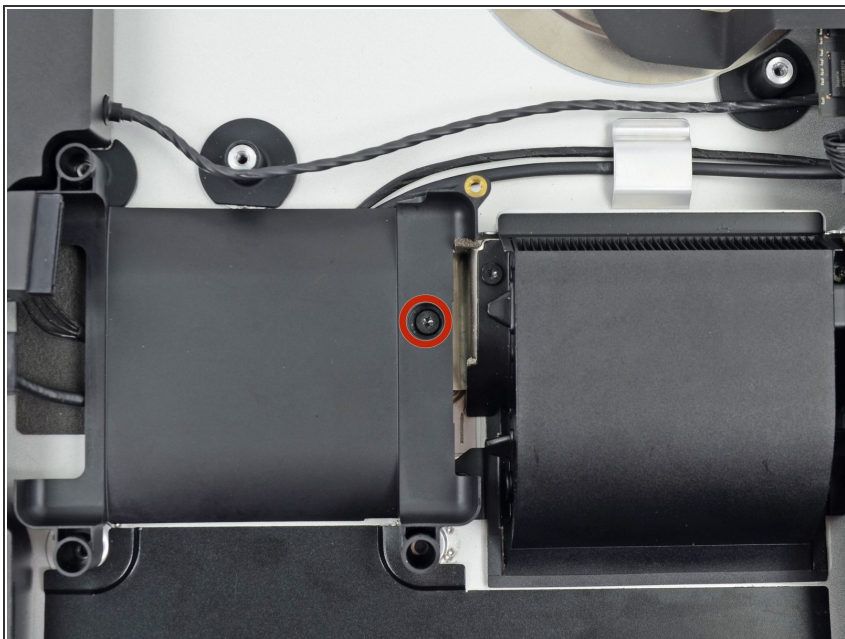
Prereq only for removing logic board, fan out.



TOOLS:

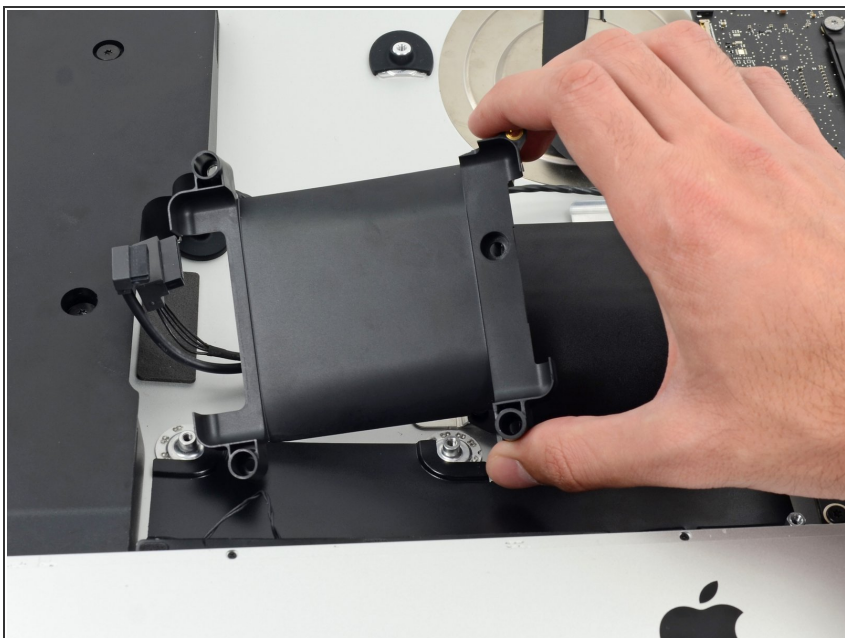
- [T10 Torx Screwdriver](#) (1)
-

Step 1 — Hard Drive Tray



- Remove the single 7.2 mm T10 screw securing the hard drive tray to the rear enclosure.

Step 2



- Remove the hard drive tray from the rear enclosure.

To reassemble your device, follow these instructions in reverse order.