



iMac Intel 21.5" EMC 2544 Logic Board Assembly Replacement

Prereq only.

Written By: Sam Goldheart



INTRODUCTION

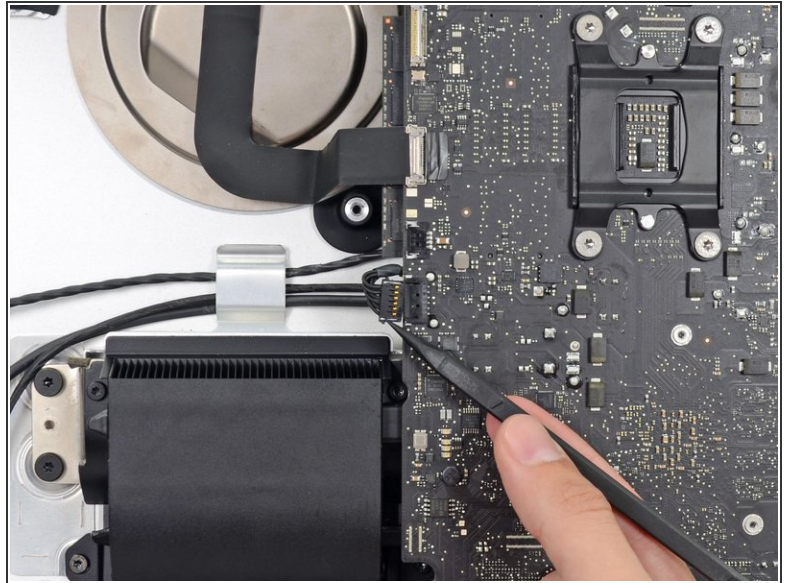
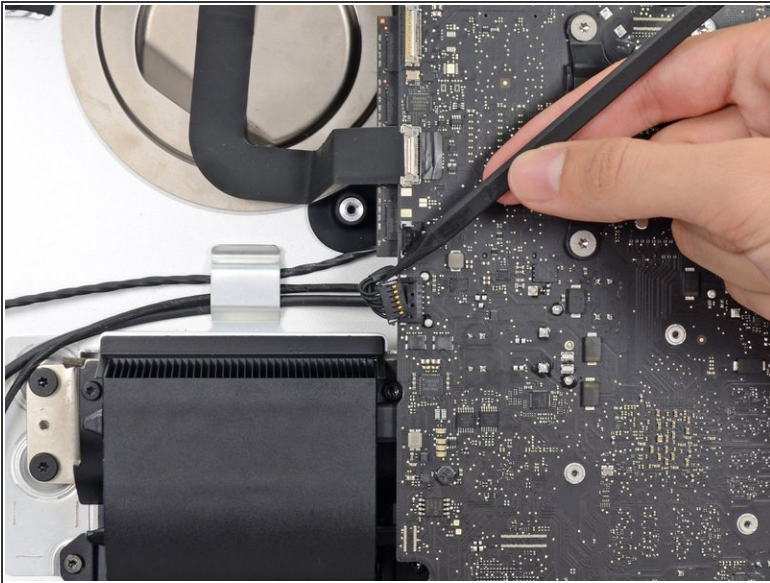
Prereq only.



TOOLS:

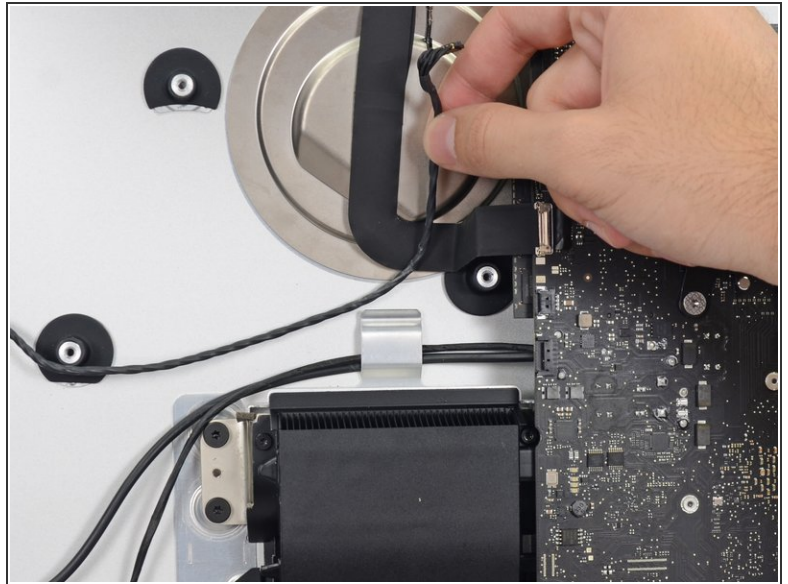
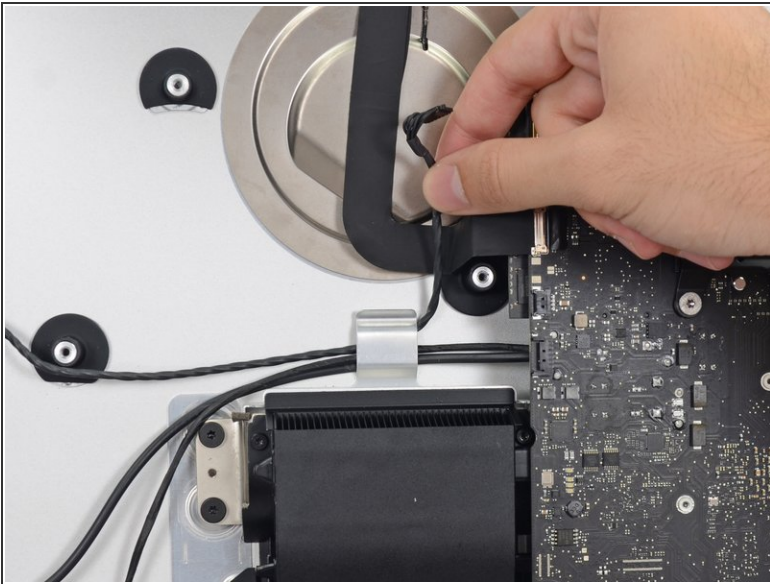
- [T10 Torx Screwdriver](#) (1)
 - [T8 Torx Screwdriver](#) (1)
 - [Spudger](#) (1)
-

Step 1 — Logic Board Assembly



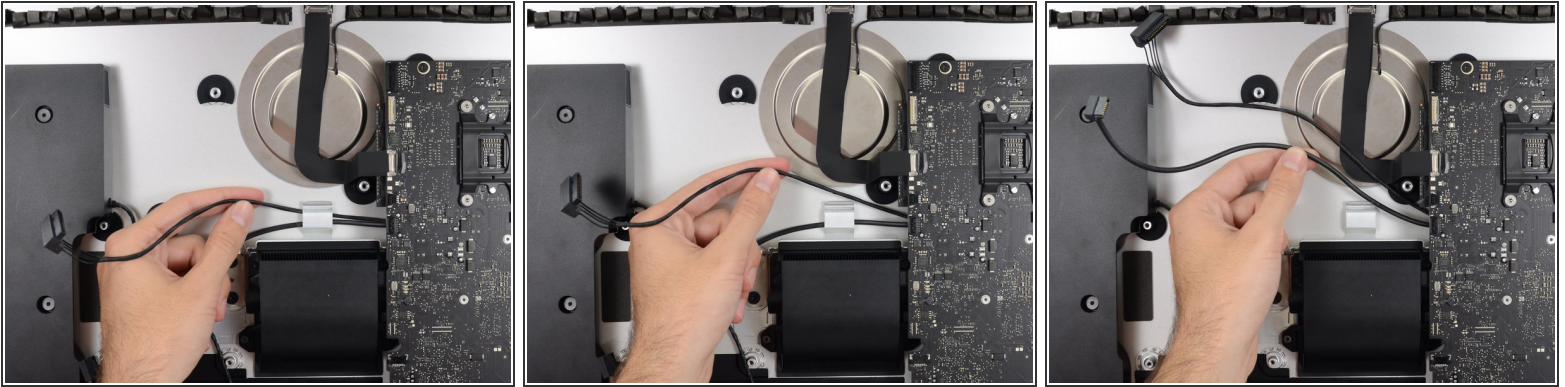
- Push on each side of the left speaker cable connector with the tip of a spudger and gently "walk" it out of its socket.

Step 2



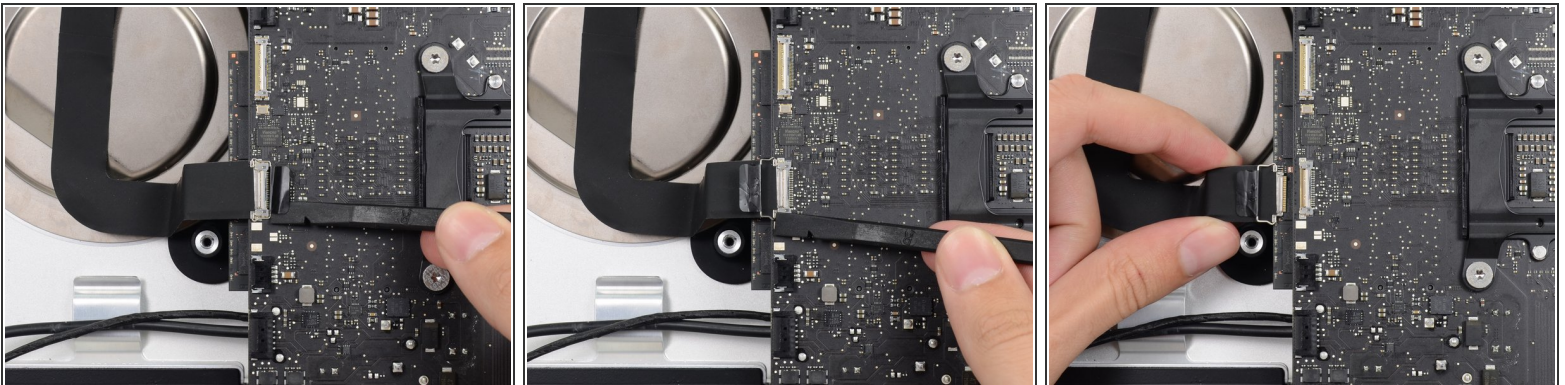
- De-route the left speaker cable by pulling it straight up out of the retaining clip in the back of the rear enclosure.

Step 3



- In a similar fashion as the previous step, de-route the SATA data and power cables up out of the retaining clip.

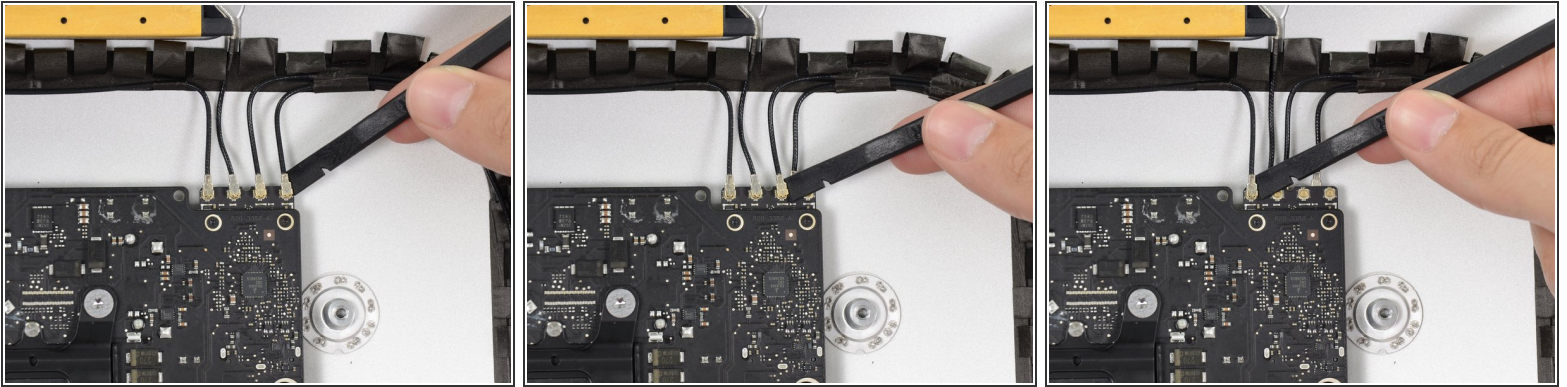
Step 4



- Use the flat edge of a spudger to flip up the metal retaining bracket on the iSight camera cable connector.
- Pull the iSight camera cable straight out of its socket on the logic board.

⚠ This is a delicate connector that can be easily damaged.

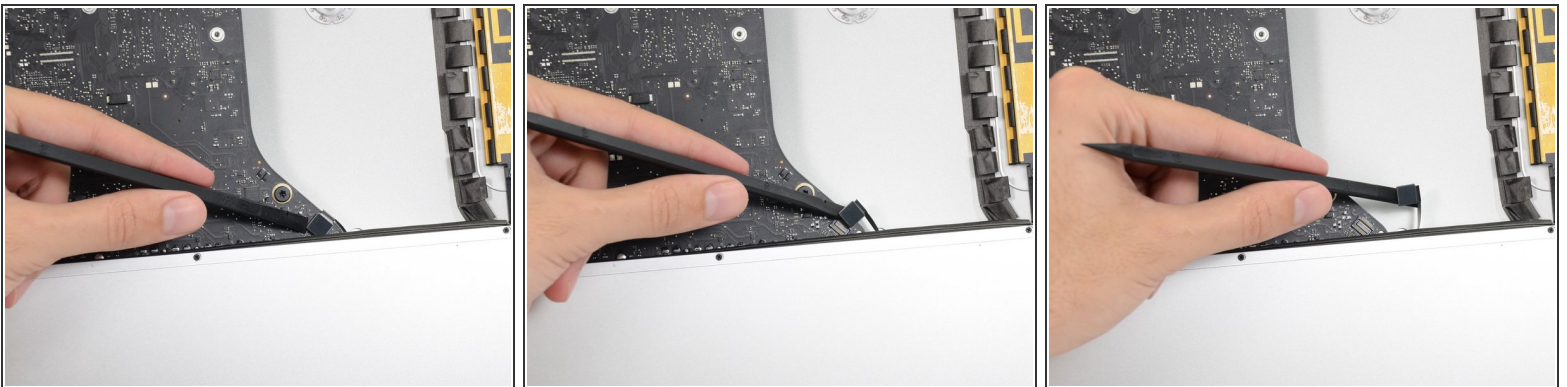
Step 5



- Use the flat edge of a spudger to disconnect each of the four antenna connectors from the AirPort/Bluetooth card.

☞ Note the original positions for each connector when reconnecting the cables.

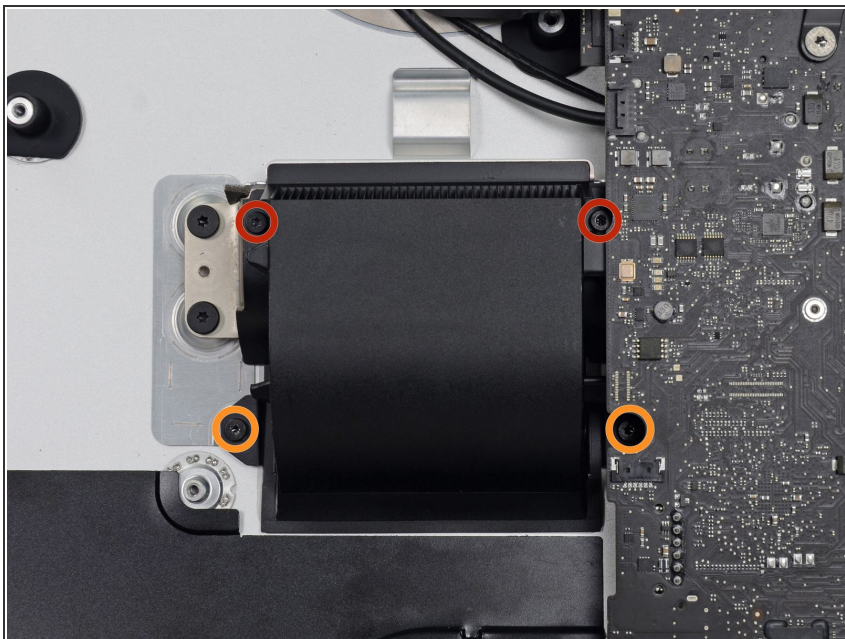
Step 6



- Use the flat edge of a spudger to pry the headphone jack cable connector from its socket on the logic board.

ⓘ Push the cable slightly to the right.

Step 7



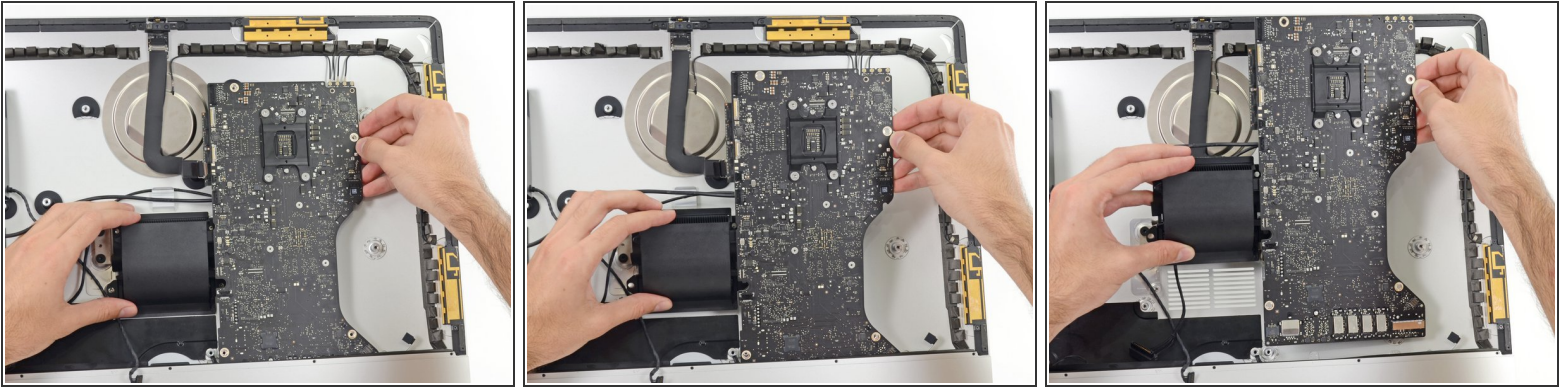
- Remove the following screws securing the exhaust duct to the rear enclosure:
 - Two 6.3 mm T8 screws
 - Two 4.7 mm T8 screws

Step 8






- Remove the four 7.2 mm T10 screws securing the logic board to the rear enclosure.

Step 9



- Tilt the top of the logic board away from the rear enclosure.
- Lift the logic board straight up and out of the iMac.

 Be careful not to snag the board on any of the rear case's screw posts.

-  The I/O boards at the bottom of the logic board will be the greatest challenge. It is recommended to pull gently to avoid any damage.
-  During reassembly of the logic board, pay attention to the position of the I/O connectors. When the board is back in the case, insert a USB or Thunderbolt cable into one of the connectors to align it perfectly.

To reassemble your device, follow these instructions in reverse order.