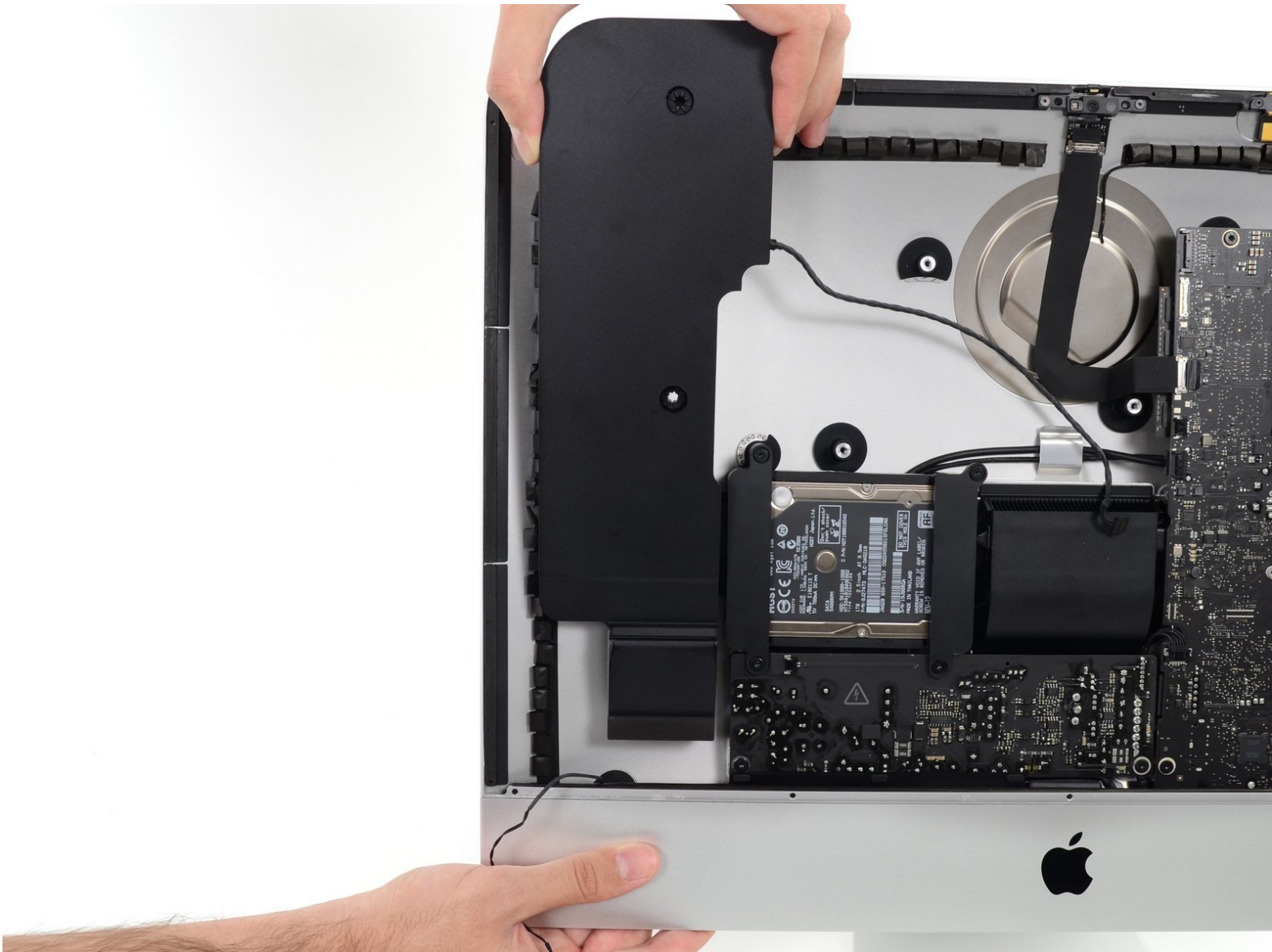




# iMac Intel 21.5" EMC 2638 Left Speaker Replacement

Replace the Left Speaker in your iMac Intel 21.5" EMC 2638.

Written By: Sam Goldheart



# INTRODUCTION

Use this guide to replace the left speaker.



## TOOLS:

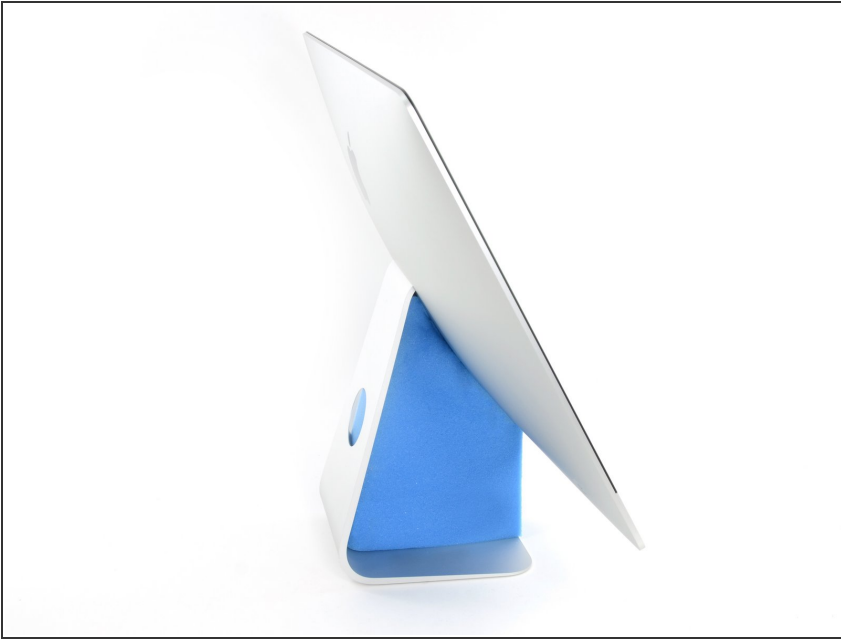
- [Tweezers](#) (1)
- [Phillips #0 Screwdriver](#) (1)
- [iMac Opening Tool](#) (1)
- [Plastic Cards](#) (1)
- [Spudger](#) (1)
- [T10 Torx Screwdriver](#) (1)



## PARTS:

- [iMac 21.5" \(Late 2012 - Mid 2017\) Left Speaker](#) (1)
- [iMac Intel 21.5" \(2012-2017\) Adhesive Strips](#) (1)

## Step 1 — Display Assembly

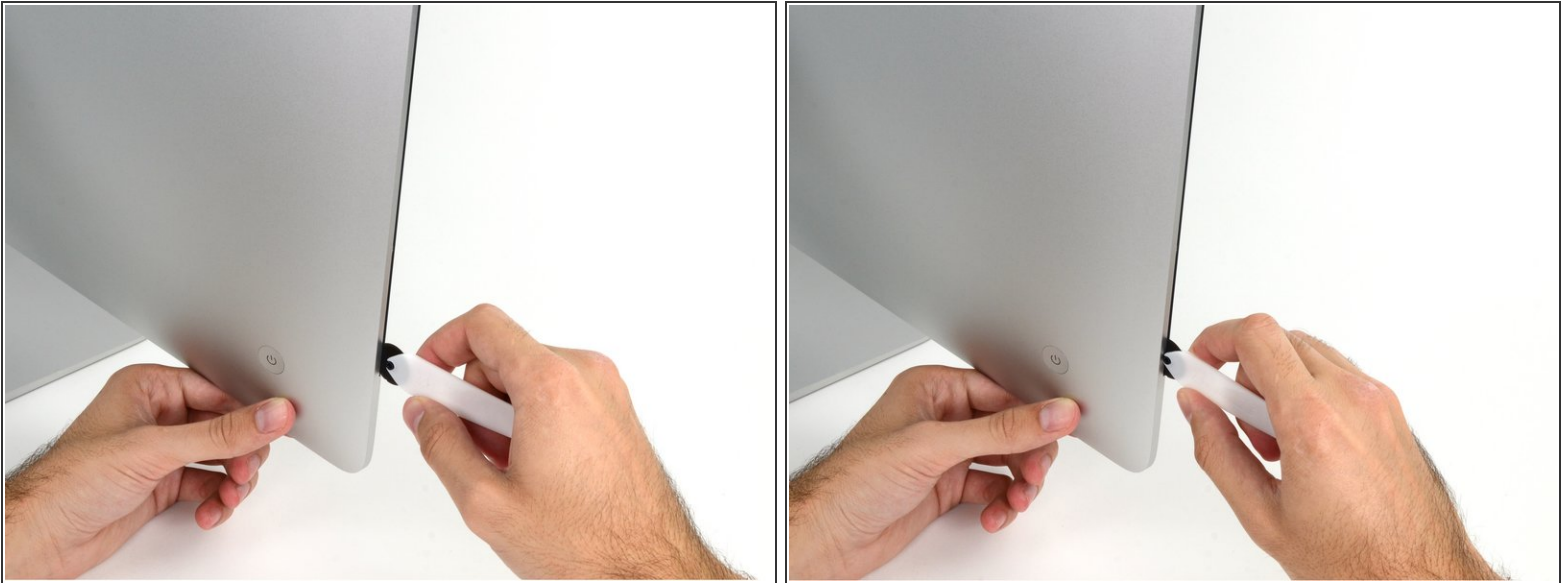


**i** With the hinge free to move, the iMac will be unbalanced and hard to work on. Repairs are fast and easy with an [iMac service wedge](#), but can be completed without one.


- **Before beginning any work on your iMac:** Unplug the computer and press and hold the power button for ten seconds to discharge the power supply's capacitors.

**!** **Be very careful** not to touch the capacitor leads or any exposed solder joints on the back of the power supply. Only handle the board by the edges.

## Step 2



- Starting on the left of the display, near the power button, insert the iMac Opening Tool into the gap between the glass panel and the rear enclosure.

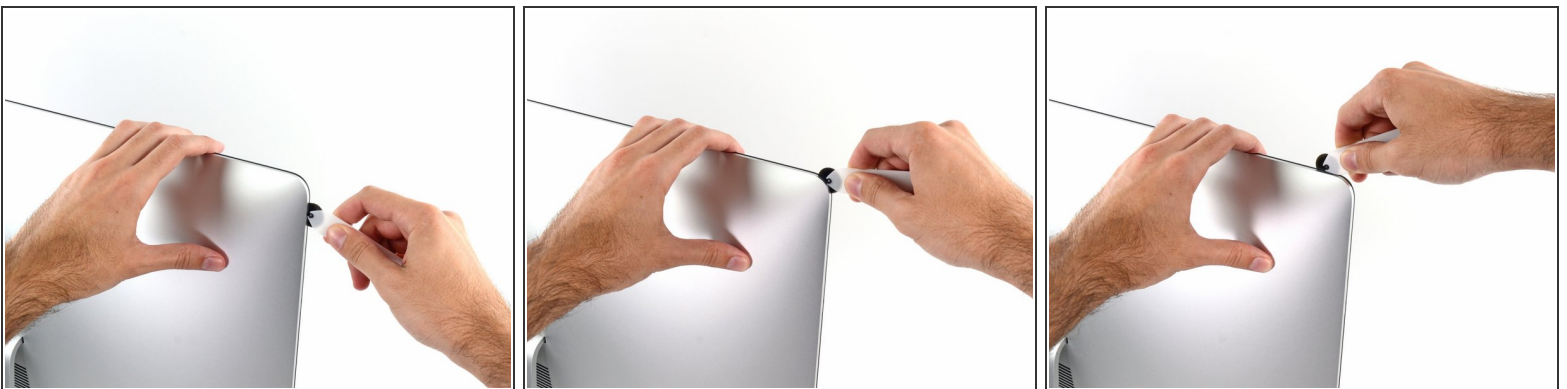
 The hub on the iMac Opening Tool will keep you from pushing the wheel in too far. If using a different tool, insert no more than 3/8" into the display. Otherwise, you risk severing antenna cables and causing serious damage.

## Step 3



- Use the tool like a pizza cutter—roll it along through the gap, and it will cut the foam adhesive through the center.
- ⓘ Be sure to always push with the handle behind the cutting wheel. If you pull, the wheel might get pulled out of the handle.
- Run the tool up along the left side of the display.

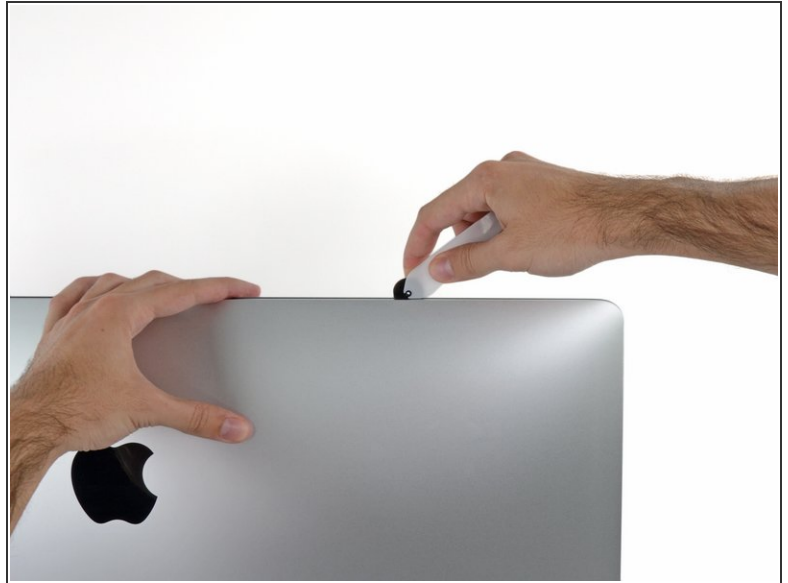
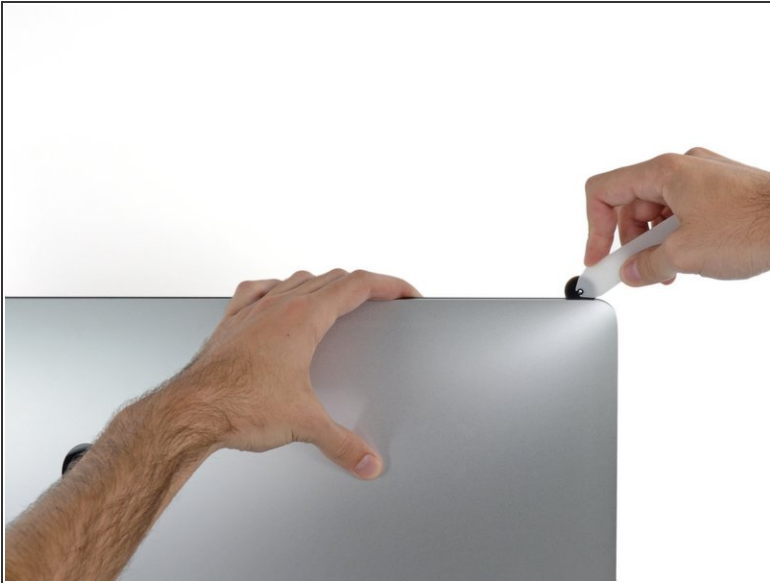
## Step 4



- Continue running the tool up around the top left corner.

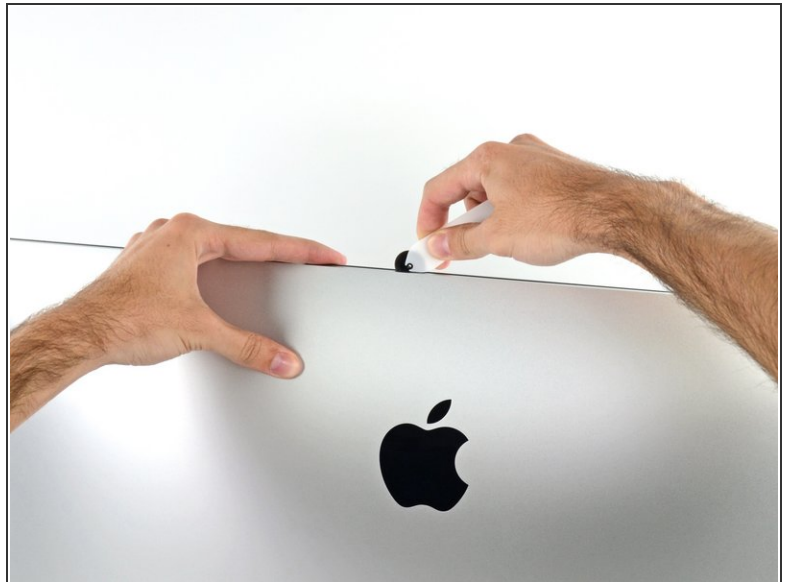


## Step 5



- Cut the adhesive along the top left of the display.

## Step 6



- Continue along the top of the display.

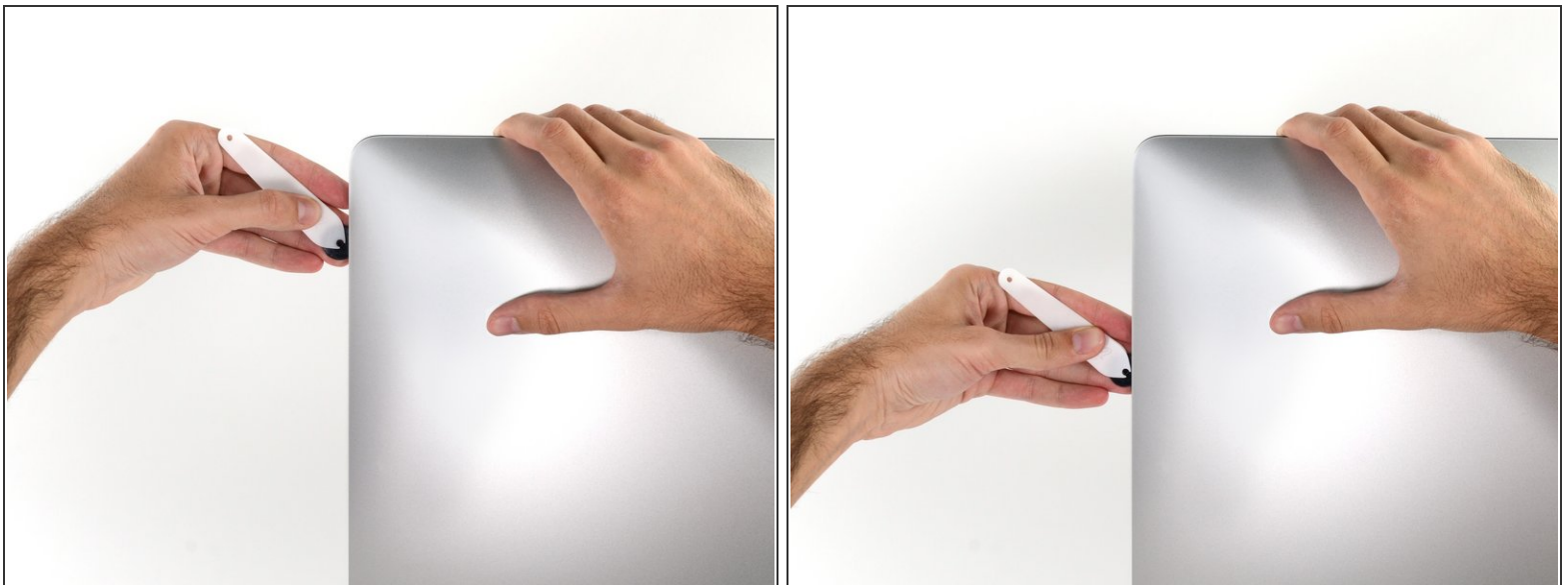
**i** You may want to run the tool back and forth through what you've already cut a few times, to ensure you get as much of the adhesive separated as possible.

## Step 7



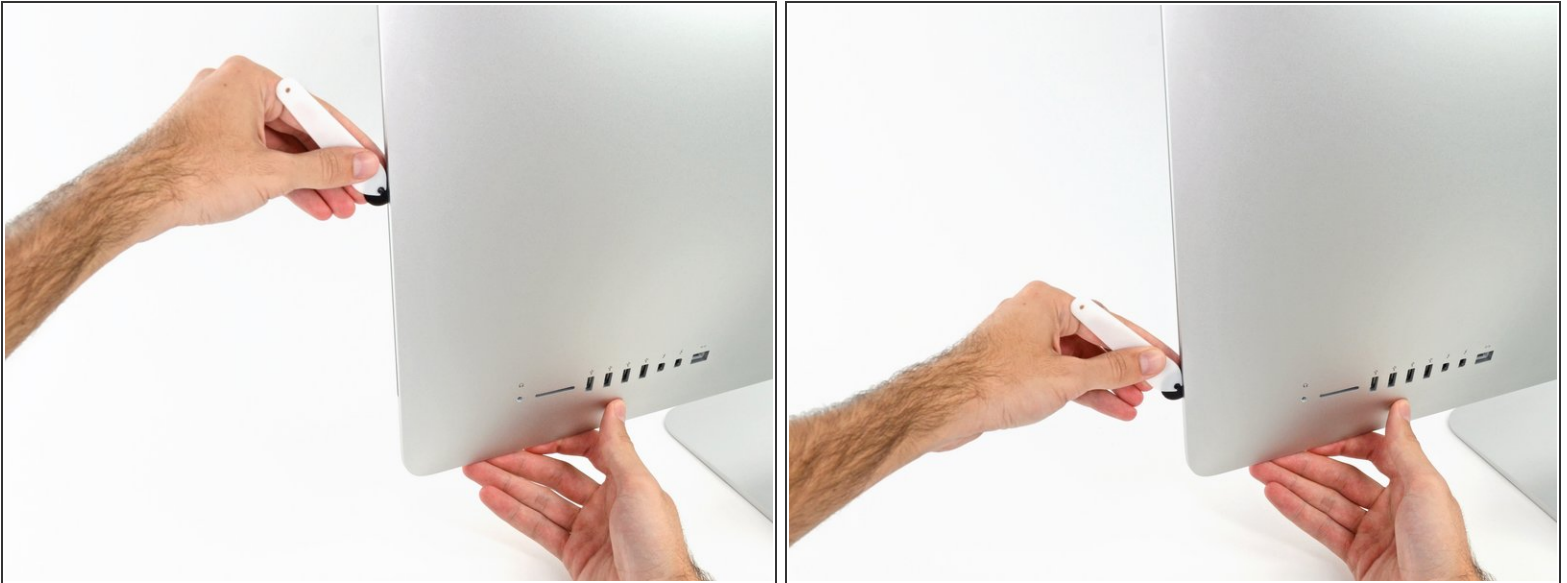
- Push the tool around the top right corner of the display.

## Step 8



- Wheel the tool down along the right side of the display.

## Step 9






- Finish pushing the opening tool to the bottom of the right side of the display.
- ⓘ At this point, you'll want to run the tool back around the entire display, to ensure you cut as much adhesive as possible.

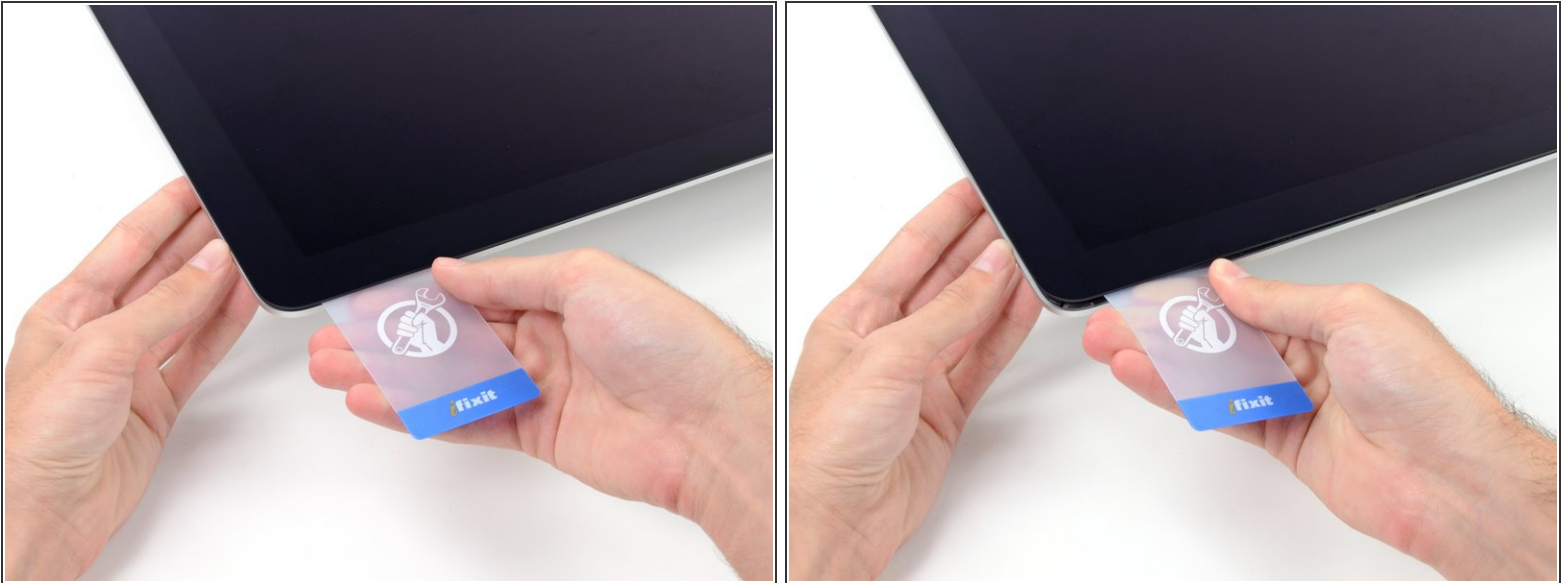


## Step 10



-  While the opening tool cut most of the adhesive, the display will still be slightly adhered to the case. A plastic card will be necessary to free up the last of this adhesive.
-  Set the iMac face-up on a table.
  - Starting from the top right corner of the iMac, wedge a plastic card between the display and frame.
-  Be careful **not** to insert the plastic card more than 3/8", or you may damage internal components.

## Step 11



- Gently twist the plastic card sideways to create a gap between the display and frame.
- Move slowly and be careful not to stress the display glass too much—you only need to make a gap of about 1/4".

## Step 12



- Slide the card toward the center of the display to cut any of the remaining adhesive along the top right corner of the iMac.

 Be sure to **stop** before the iSight camera, or you may damage it.

## Step 13



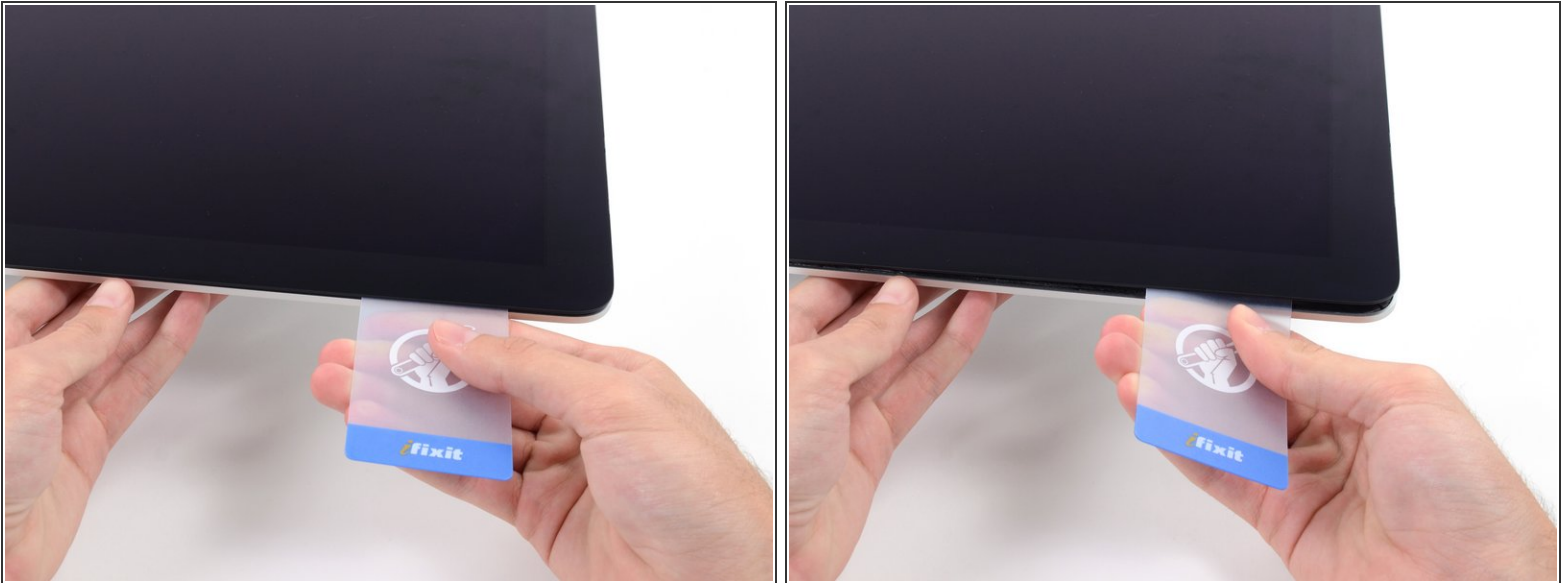
- Wedge the plastic card into the top right corner once again, and leave it there to prevent the adhesive from resticking.

## Step 14



- Insert a second plastic card into the gap between the display and frame near the top left corner of the iMac.

## Step 15



- Gently twist the card upward, slightly increasing the space between the display and frame.
- ⓘ As with the other side, twist slowly to allow the adhesive time to separate, and be careful not to over-stress the display glass.

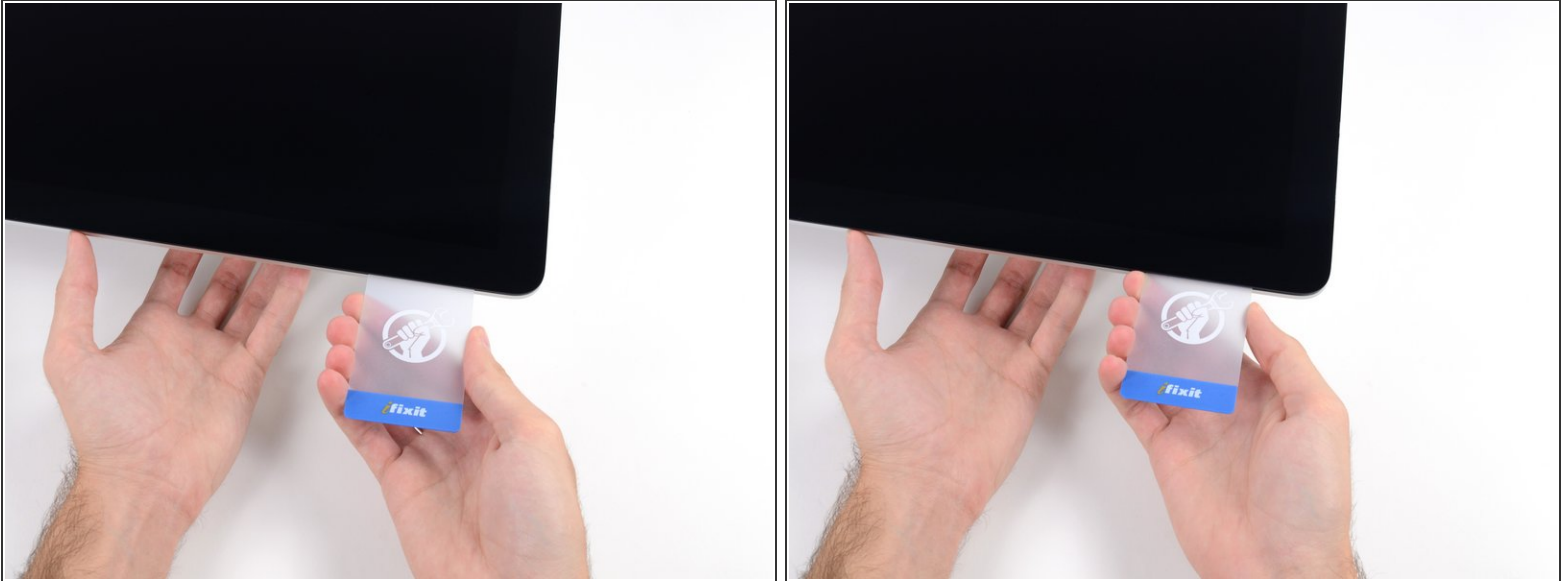
## Step 16



- Slide the plastic card toward the center, again stopping just before the iSight camera.



## Step 17



- Wedge the plastic card back into the top left corner.

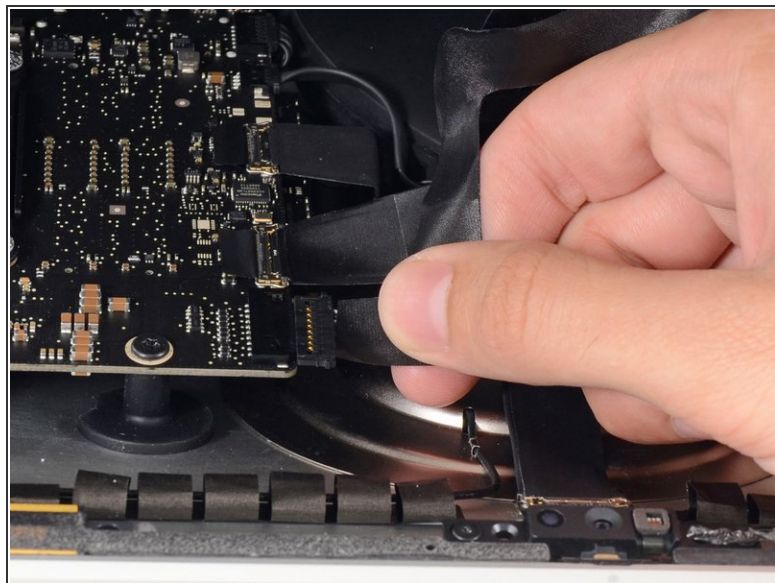
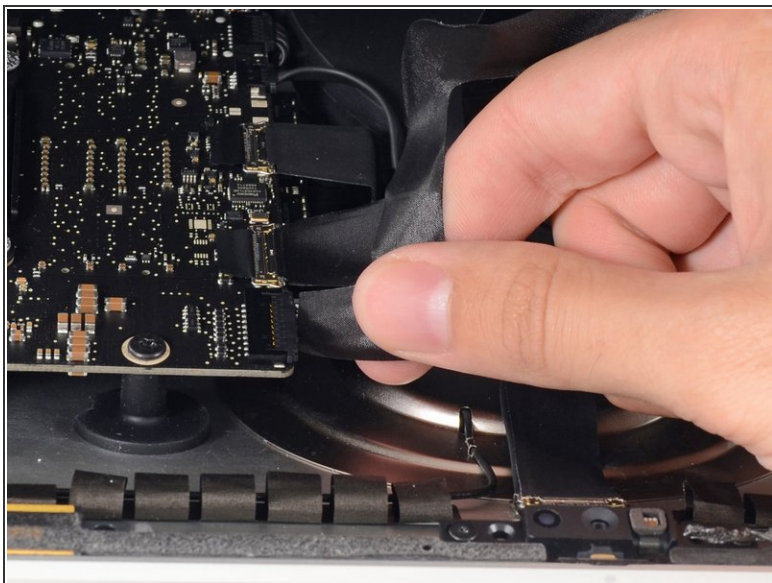
## Step 18



- With both plastic cards inserted as shown near the corners, gently twist the cards sideways to increase the gap between display and case.
- ⓘ If there are any sections that seem to stick and won't separate, stop twisting and use one of the cards to cut the remaining adhesive.
- Begin to lift the top of the display up from the frame.
- ⚠ Only lift the display a few inches—the display data and power cables are still connected to the logic board.

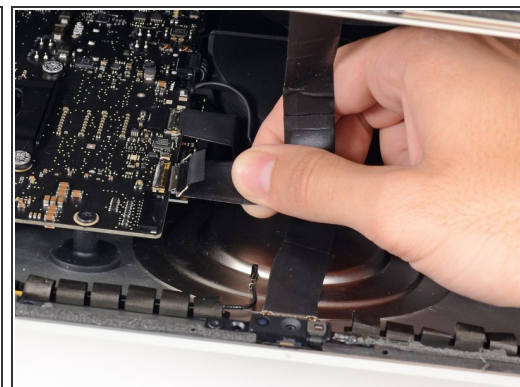
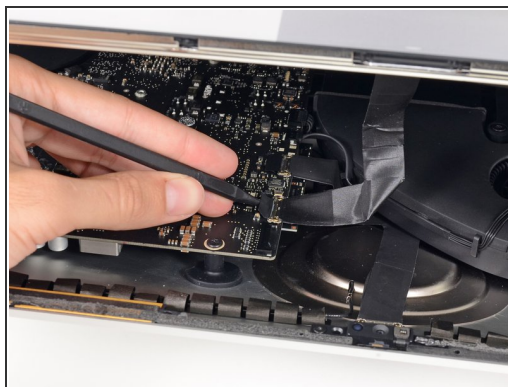
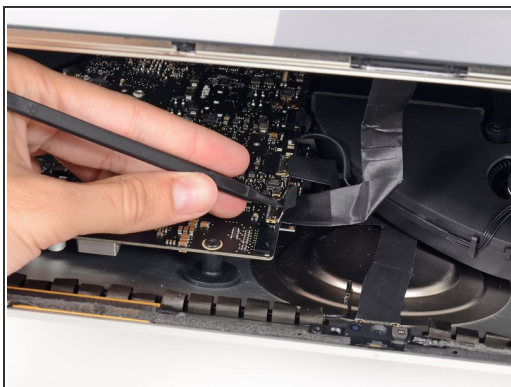


## Step 19 — Display



- While holding the display up with one hand, use the other hand to unplug the display power cable.
- ⓘ Lift the display up enough to have easy access to the connector, but not so much that you stretch the cables and stress their connections (about 8").

## Step 20



- Use the tip of a spudger to flip up the metal retaining bracket on the display data cable.
  - Carefully pull the display data cable from its socket on the logic board.
- ⚠ Be sure to pull the display data cable connector straight out of its socket.

## Step 21



- Lift the display up to a near-vertical position.
- ⓘ At this point there is still a strip of adhesive along the bottom of the display, that will hold the display to the frame like a hinge. You can loosen this adhesive by working the display up and down a few times.

## Step 22



- ⓘ If necessary, a plastic card can be used to cut any remaining sections of the bottom adhesive strip.

## Step 23

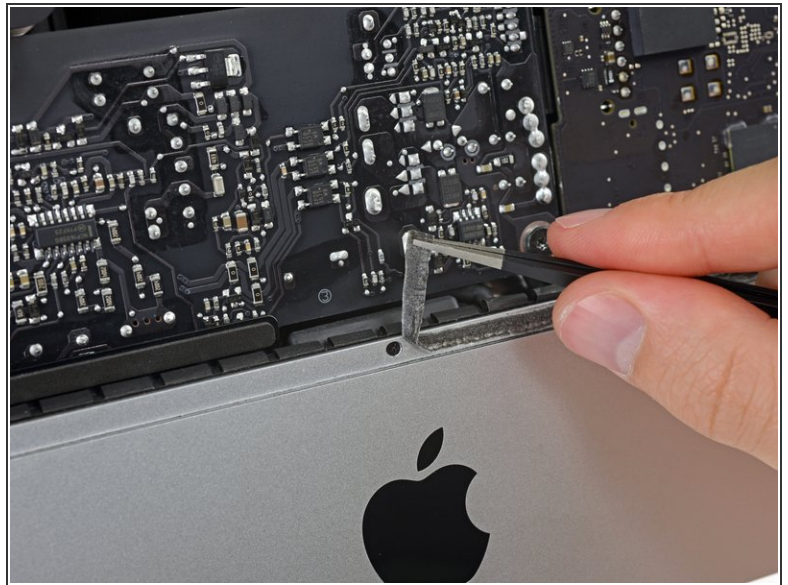


- Lift the display up from the frame and remove it from the iMac.
- It may be necessary to slowly lift from one side, to peel against the remaining adhesive.

 Be very careful handling the display—it's big, heavy, and made of glass.



## Step 24 — Lower Support Bracket



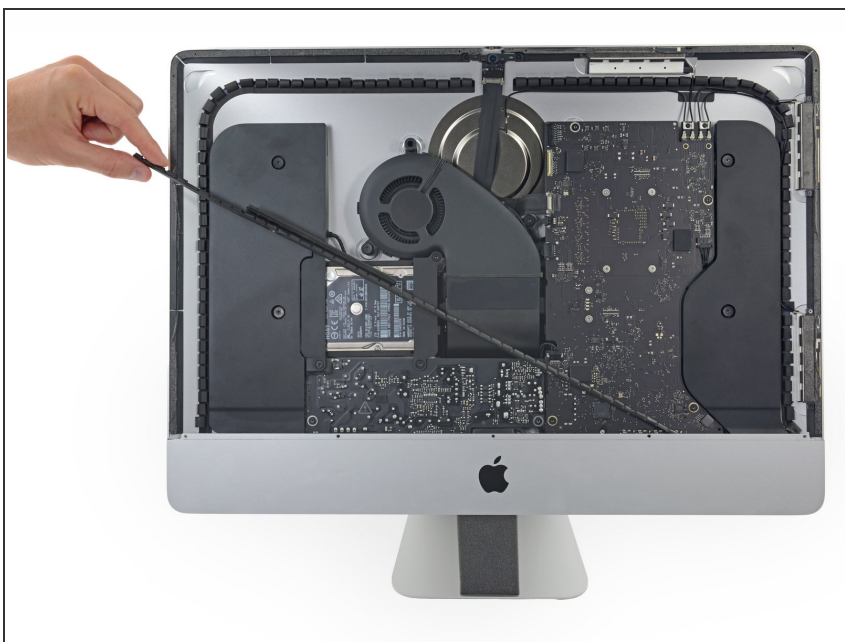
- Remove the following five Phillips screws holding the lower support bracket in place:

- Four 3.2 mm screws
- One 1.7 mm screw

ⓘ On at least some EMC 2544 machines, all five screws are the same size.

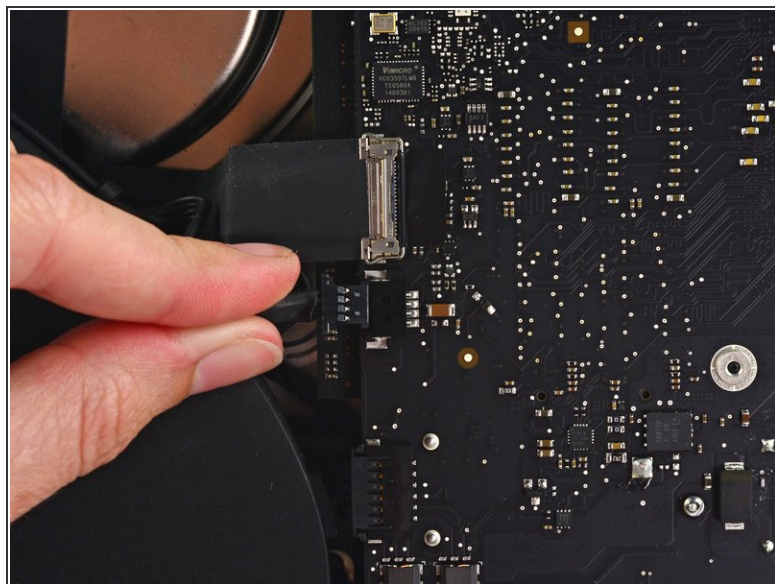
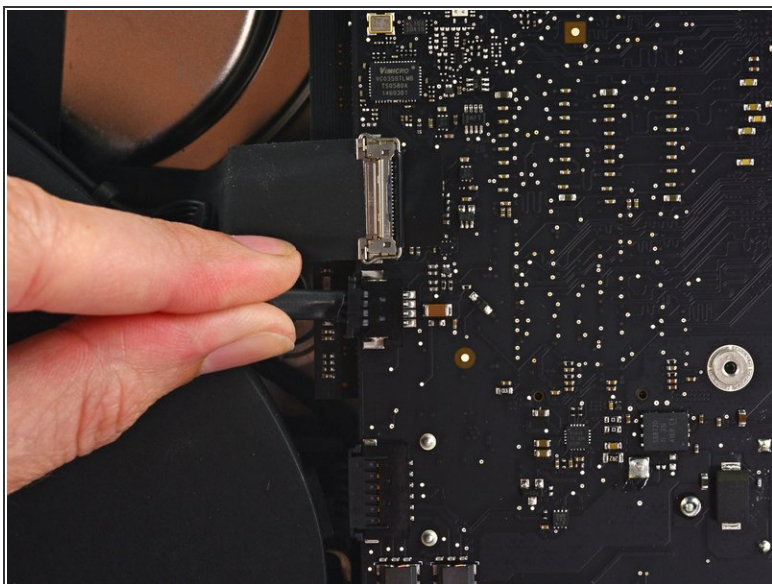
ⓘ You may need to peel up the display adhesive lining the bottom edge of the iMac enclosure to access the screws.

## Step 25



- Remove the lower support bracket from the iMac enclosure.

## Step 26 — Fan



- Pull the fan cable connector straight away from its socket on the logic board.

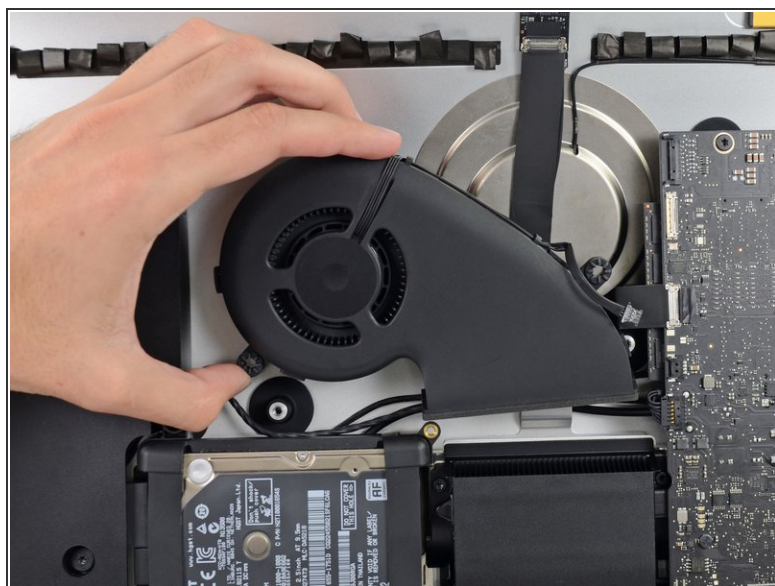
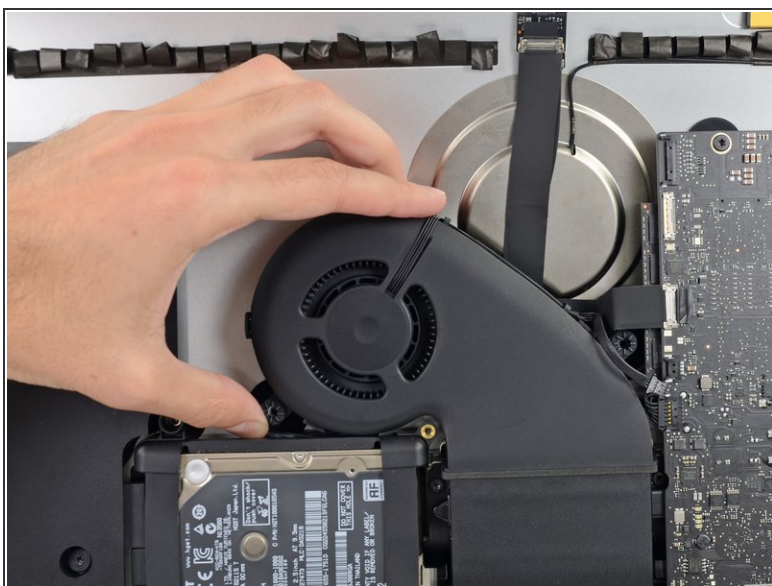


## Step 27



- Remove the three 12.3 mm T10 shoulder screws from the fan enclosure.

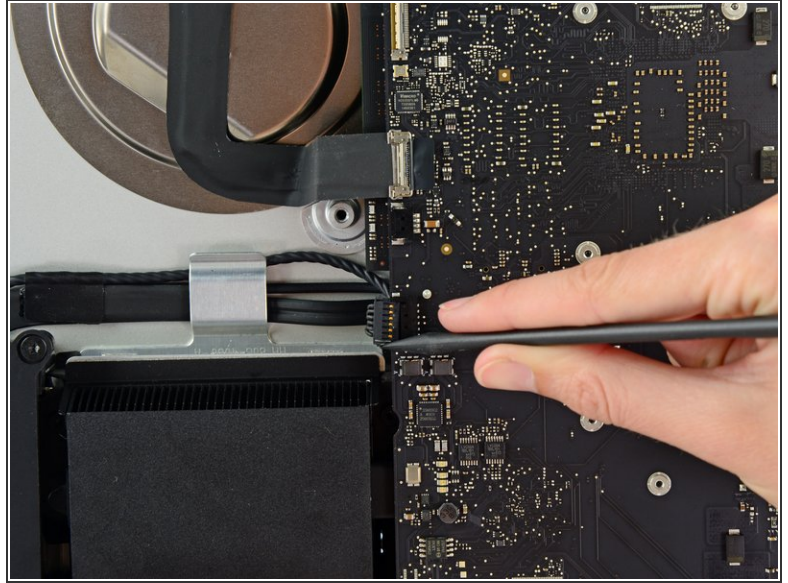
## Step 28



- Lift and remove the fan from the iMac.

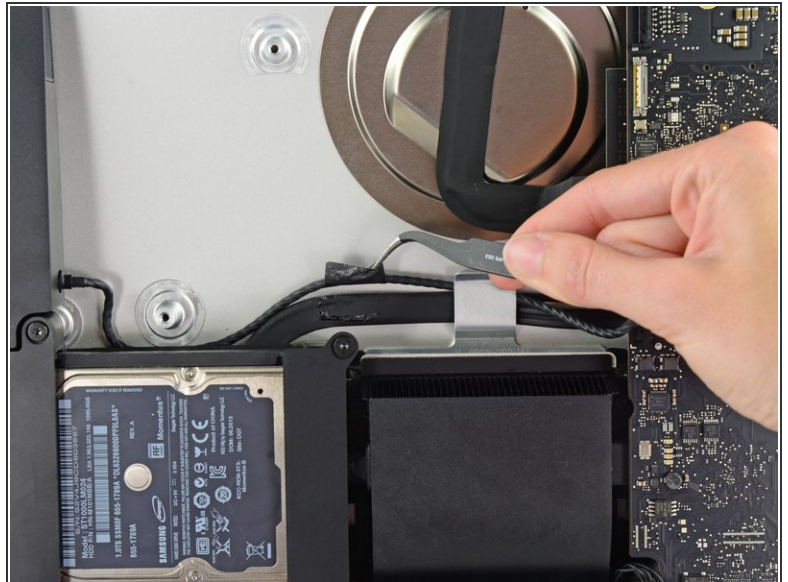
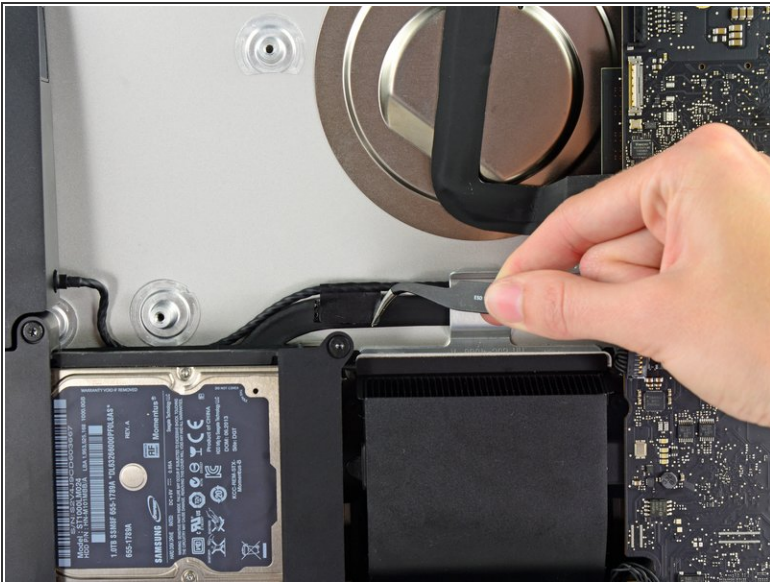


## Step 29 — Left Speaker



- Use the tip of a spudger to *walk* the left speaker cable connector out of its socket.
- ⓘ It is recommended to first press on one side of the connector, then press on the other side until freed.

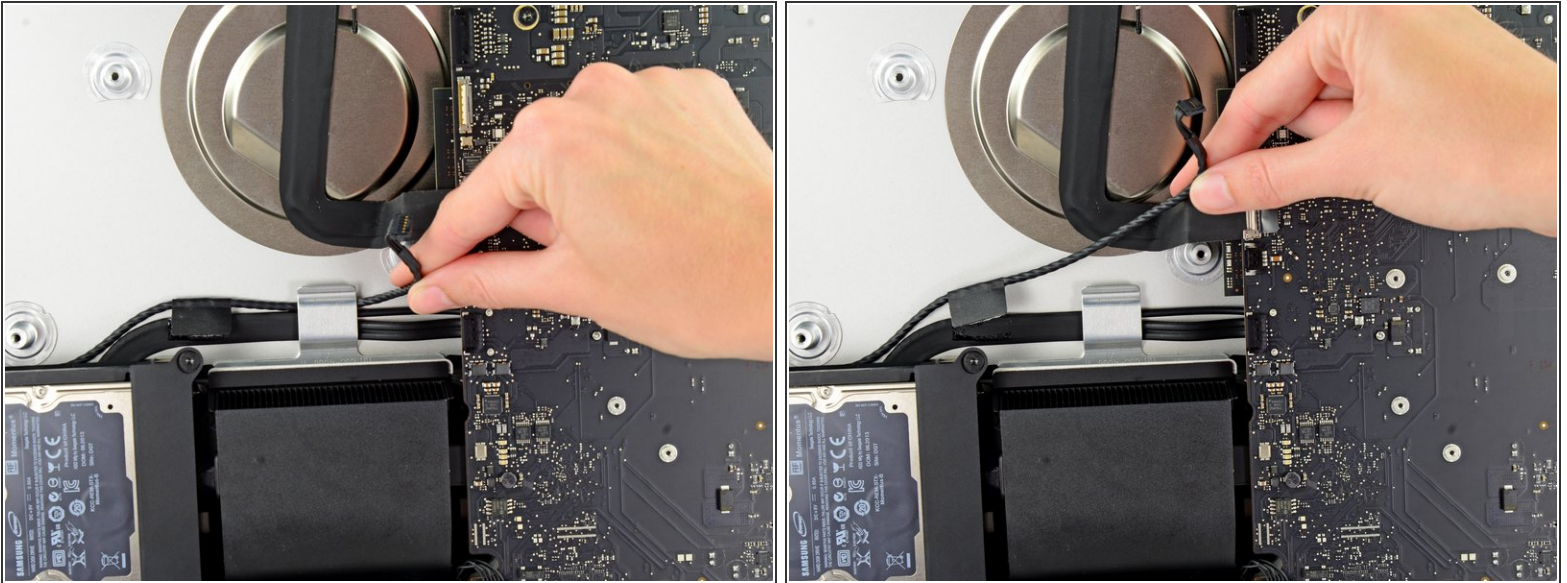
## Step 30



- ⓘ If necessary, use a pair of tweezers to peel the tape securing the left speaker cable to the SATA data/power cable.

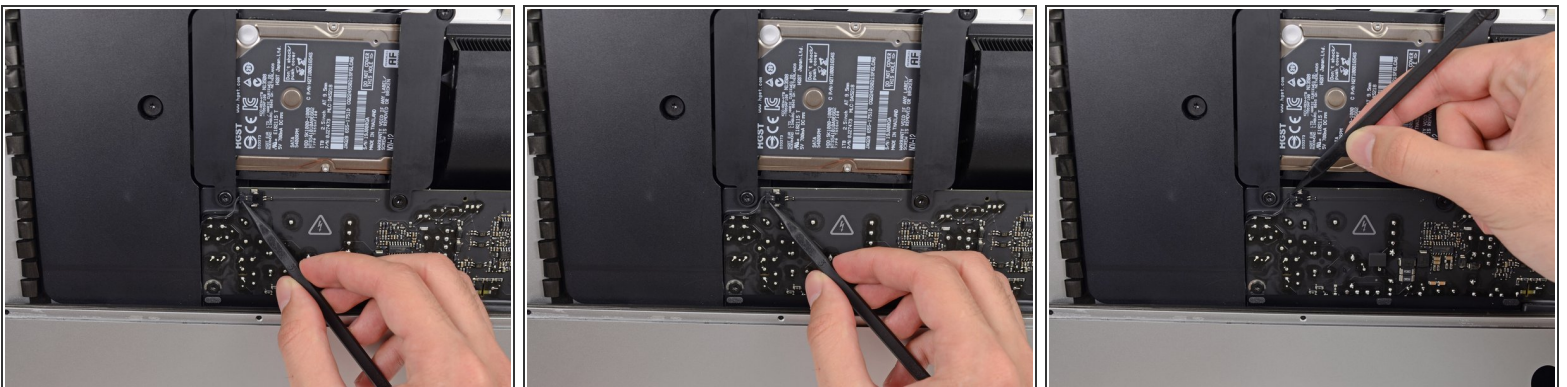


## Step 31




- Gently lift the left speaker cable upwards to de-route it from the clip holding it to the rear case.

## Step 32



- Use the tip of a spudger to *walk* the power button connector out of its socket on the logic board.

 It is recommended to first push on one side, then the other.

 **Be very careful not to touch any solder joints** on the back of the power supply. The power supply's capacitors may be charged enough to give you a dangerous shock.

## Step 33



- Remove the two 10.0 mm T10 screws securing the left speaker to the rear case.

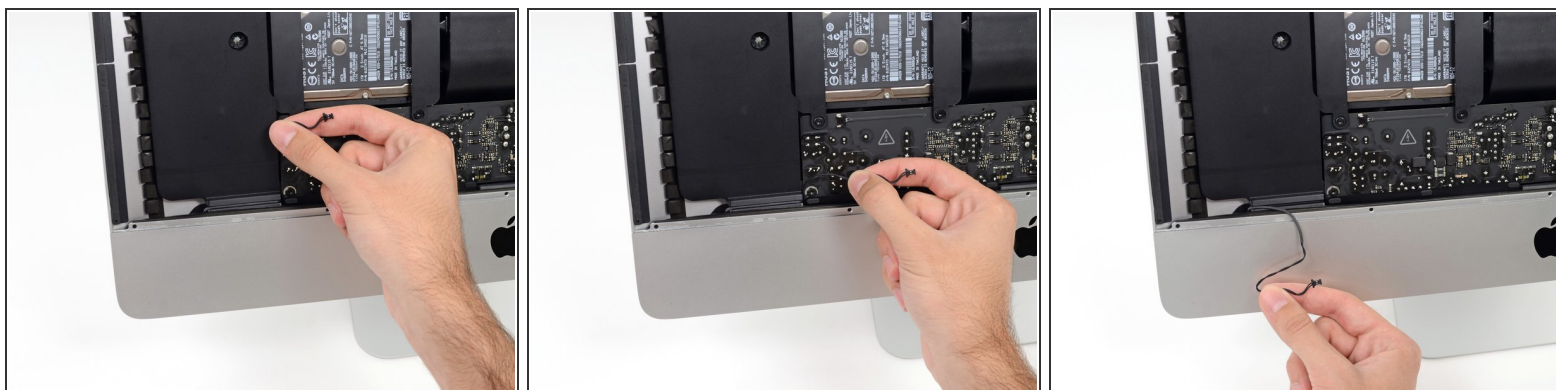
## Step 34



- Lift, but do **not** remove, the left speaker straight up, until the power button cable is exposed (about 0.5").

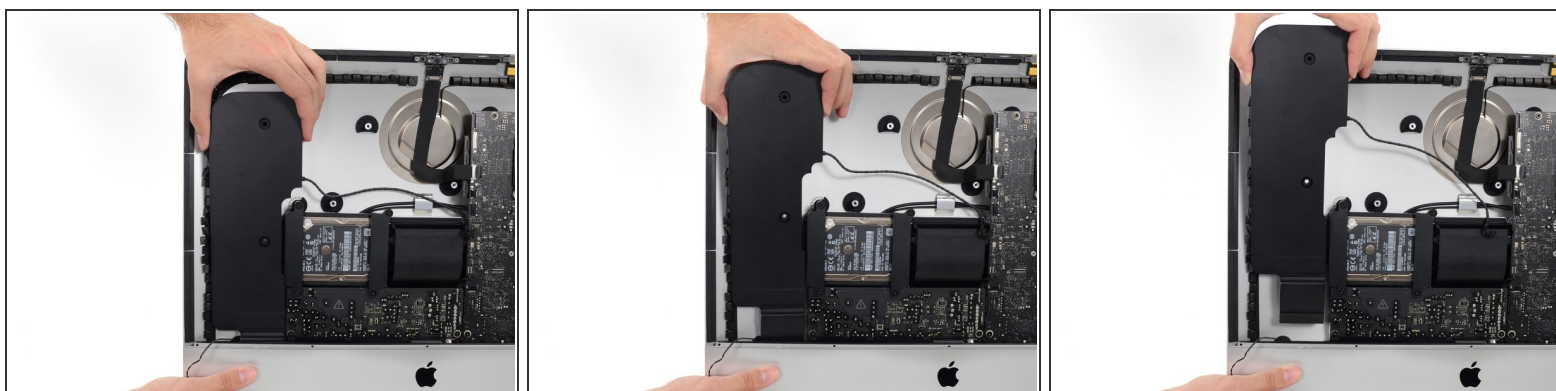


## Step 35



- Carefully de-route the power button cable from its groove in the left speaker.

## Step 36



- Lift the left speaker straight up and remove it from the iMac.

To reassemble your device, follow these instructions in reverse order.