



# iMac Intel 21.5" EMC 2638 Teardown

Teardown of the fall 2013 21.5" iMac, EMC 2638.

Written By: Sam Goldheart



## INTRODUCTION

We are 99% sure that this iMac is 99% the same as its predecessor. What makes the 1%? Power? Money? New connectors?! We know of only one way to find out.

Come see as we take a peek inside a minor update of an old friend.

21.5" not quite enough iMac for ya? We also got our hands on the new 27" model, so be sure to check out the bigger brother's [teardown](#) too!

Want to be 99% sure you are up to date on the latest teardowns, photos, and friendly encounters of iFixit? Tweet us a new one on [Twitter](#), peer into our souls on [Instagram](#), or BFF us on [Facebook](#).



### TOOLS:

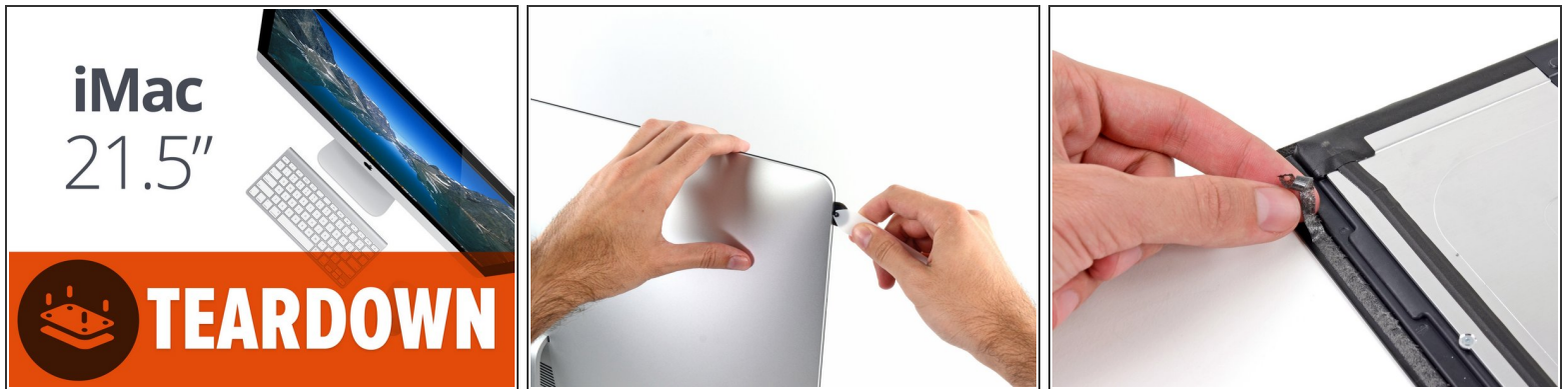
- [iMac Opening Tool](#) (1)
- [Plastic Cards](#) (1)
- [Spudger](#) (1)
- [T5 Torx Screwdriver](#) (1)
- [T8 Torx Screwdriver](#) (1)
- [T10 Torx Screwdriver](#) (1)



### PARTS:

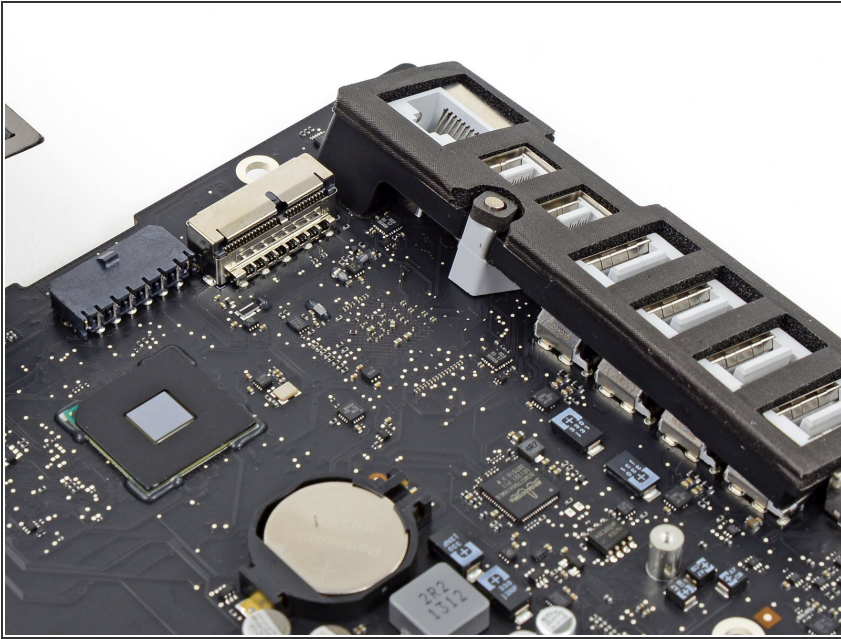
- [iMac Intel 21.5" \(2012-2017\) Adhesive Strips](#) (1)

## Step 1 — iMac Intel 21.5" EMC 2638 Teardown



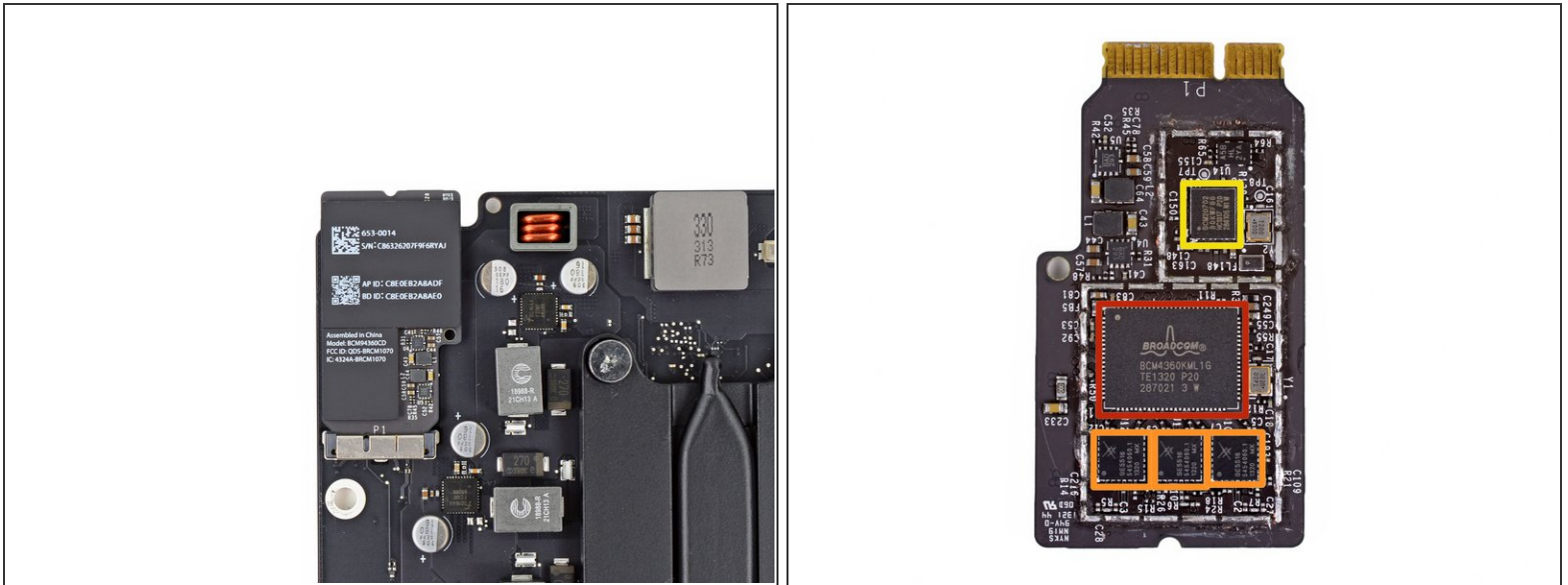
- Updated Specs:
  - 2.7 GHz quad-core Intel Core i5
  - Iris Pro graphics
  - 802.11ac Wi-Fi
  - PCIe flash SSD available
- Apple again used the fun foamy adhesive to hold the display in place. Fortunately, we have [a solution](#) to that sticky situation, just in case you need it.
  - With a couple of cuts here and there, we managed to get in.
- We're sad to see that Apple hasn't upgraded iMac's display cable, which is delicate and can be prone to disaster. So if you attempt this at home, take care when opening it!

## Step 2



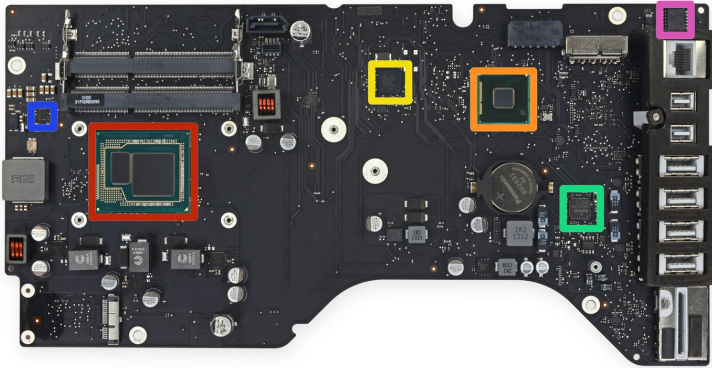
- We had to do some digging and actually *remove* the logic board from the iMac. We don't like work. Work is hard. But the reward was certainly worth the effort.
- ⓘ Our base-model 21.5" iMac **now features an empty PCIe SSD slot**, ready and waiting for eager money-saving DIY upgraders everywhere.
- This is a pleasant surprise compared to last year, when we were left [sorely disappointed by unpopulated solder pads](#) on our low-end 21.5's logic board.

## Step 3



- Marked as BCM94360CD, this Broadcom AirPort card boasts support for the new [802.11ac Wi-Fi](#) standard.
- Not the first Mac to get updated with the new ac standard, we expected to see some similar hardware as in the refreshed [MacBook Airs](#) from earlier this year.
- What's under the hood?
  - Broadcom [BCM4360KML1G](#) 5G WiFi 3-stream 802.11ac gigabit transceiver—as expected, this is the same chip driving the ac Wi-Fi in the 11" and 13" MacBook Air
  - Three Skyworks [SE5516](#): dual-band 802.11a/b/g/n/ac WLAN front-end modules
  - Broadcom [BCM20702](#) single-chip Bluetooth 4.0 HCI solution with Bluetooth Low Energy (BLE) support

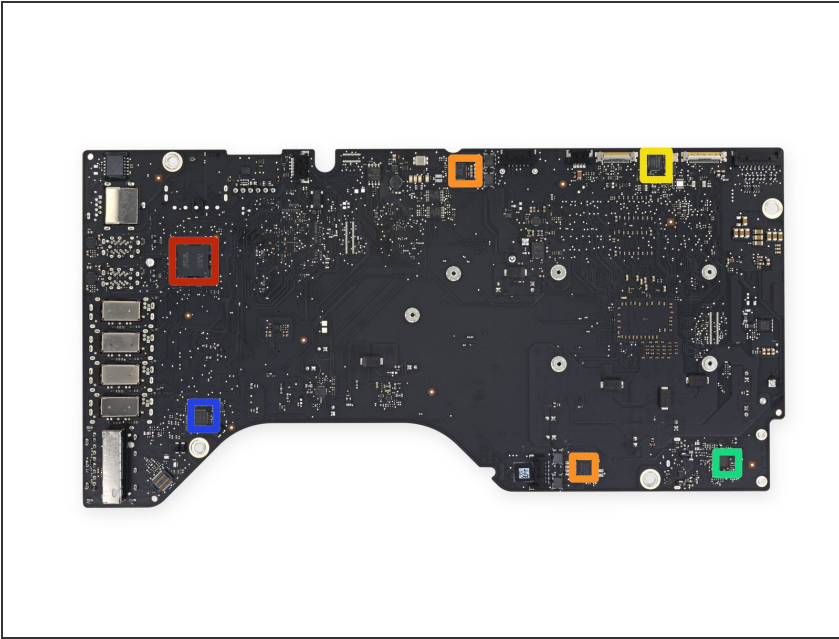
## Step 4



- The front-side ICs are looking mighty familiar, despite a CPU/GPU shuffle:
  - 2.7 GHz quad-core Intel Core i5 with Intel Iris Pro graphics processor.
  - Intel [E213B384](#) platform controller hub
  - Texas Instruments Stellaris [LM4FS1AH](#) microcontroller
  - Broadcom [BCM57765A1KMLG](#) gigabit ethernet controller with integrated SDXC card reader
  - National Semiconductor VM22AC

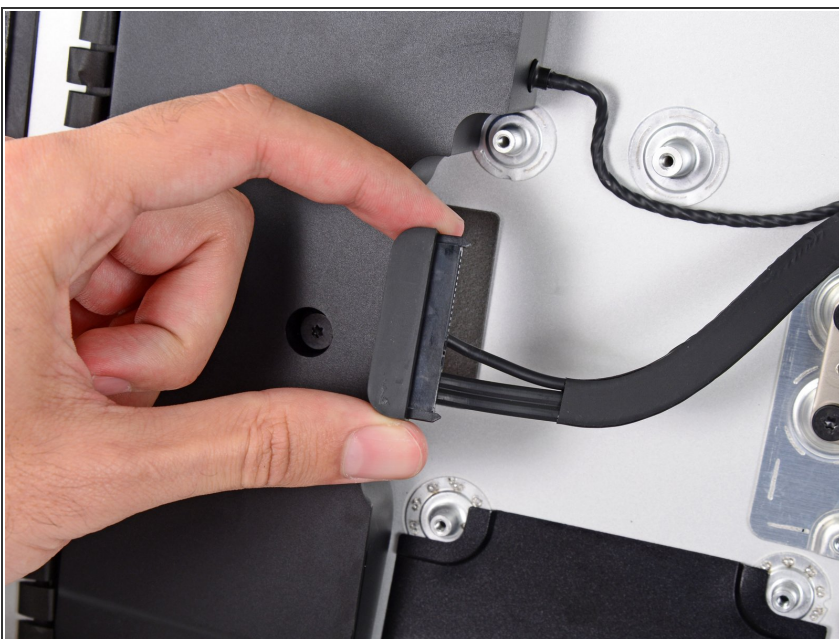


## Step 5



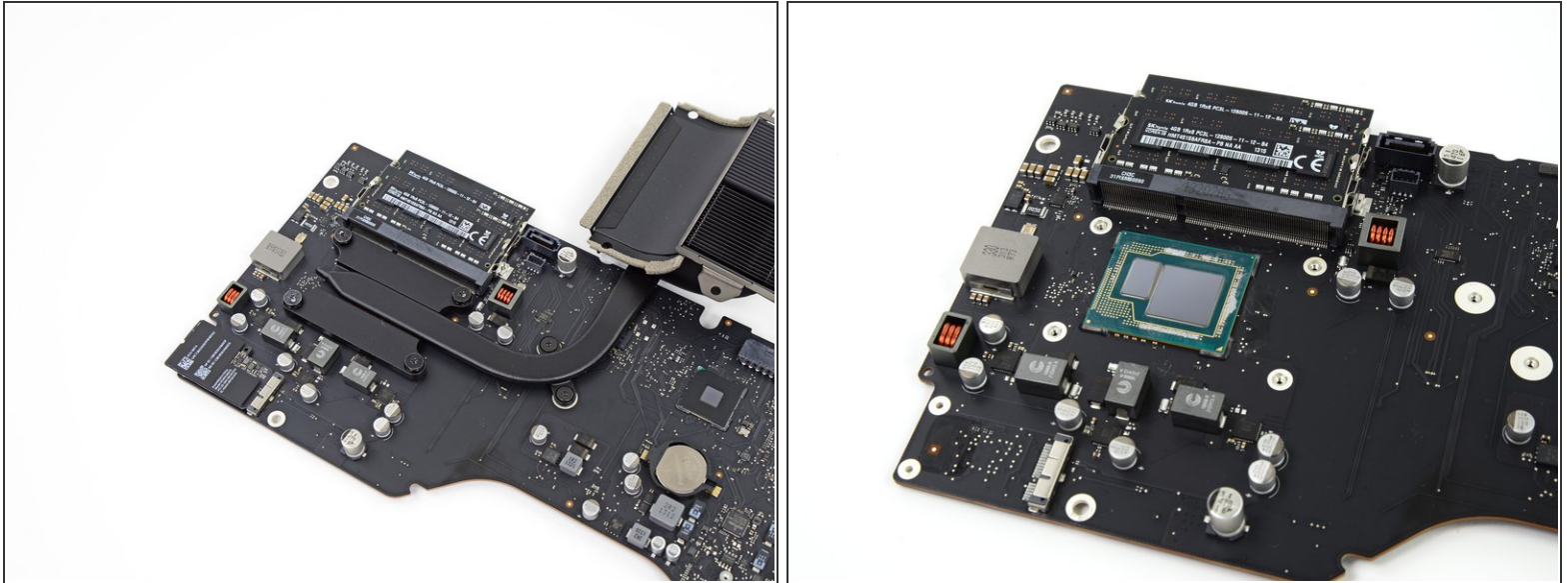
- And if we the front-side ICs looked familiar, get a load of the back:
  - Intel DSL3510L [Cactus Ridge](#) Thunderbolt controller
  - Analog Devices [SSM3302](#) audio amplifier
  - Vimicro [VC0359](#) webcam processor
  - Intersil [ISL6364](#) multi-phase pulse width modulation (PWM) controller
  - Cirrus Logic 4206BCNZ audio controller, the same chip as found in [last year's 21.5"](#)

## Step 6



- Looks like Apple got two birds with one stone — that is if hard drive cables were birds. The hard drive SATA power and data cables come together in a glorious union, saving you [a step or two](#) when you upgrade.

## Step 7



- Apple's iterative streamlining is again in effect, with a slimmed down and beautified CPU heat sink.
- ❗ We compared this new heat sink to last November's bigger, beefier, and more securely-fastened [spidery mess](#), and started to wonder what changed to allow such a slender 'sink'.
  - The truth was alarming—the **CPU is soldered in place** on the logic board, and cannot be removed, replaced, or upgraded.
- ❗ As far as we can tell, this is the [first aluminum iMac](#) to have a soldered CPU; it's a silent, but clear, shift to even poorer iMac upgradeability.
- 21.5-inch: 2.9GHz corei5 CPU is upgradeable and the double side sticky strips for the the 2012 model work on this late 2013 model as well.



## Step 8



- iMac 21.5" EMC 2638 Repairability Score: **2 out of 10** (10 is easiest to repair)
- You can still replace the RAM and hard drive inside this machine...with a lot of adhesive cutting.
- Budget-minded folks now can add a second hard drive to the base iMac because the Fusion Drive connector is no longer missing from the logic board.
- The CPU is soldered to the logic board, and cannot be replaced or upgraded.
- The glass and LCD are fused together, and there are no more magnets holding the glass in place.
- Most replaceable components (like the RAM) are buried behind the logic board, meaning you'll have to take apart most of the iMac just to gain access to them.
- You'll have to masterfully peel off the old double-sided sticky tape and apply new tape in order to reseal this iMac into original condition.