



iMac Intel 21.5" EMC 2805 Hard Drive Assembly Replacement

Prereq only for removing the logic board, fan and power supply are out.

Written By: Walter Galan



INTRODUCTION

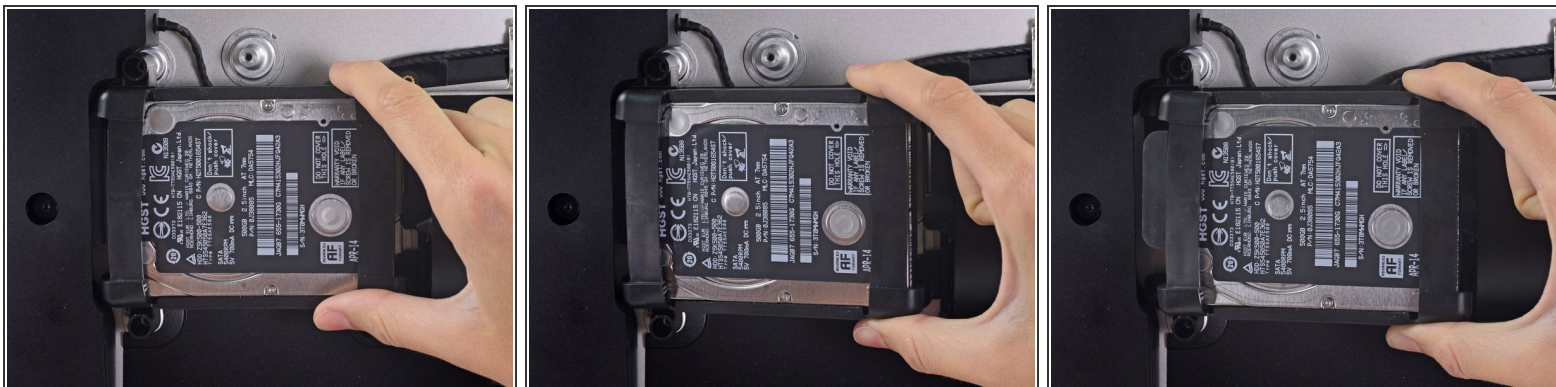
Prereq only for removing the logic board, fan and power supply are out.



TOOLS:

- [Spudger](#) (1)
-

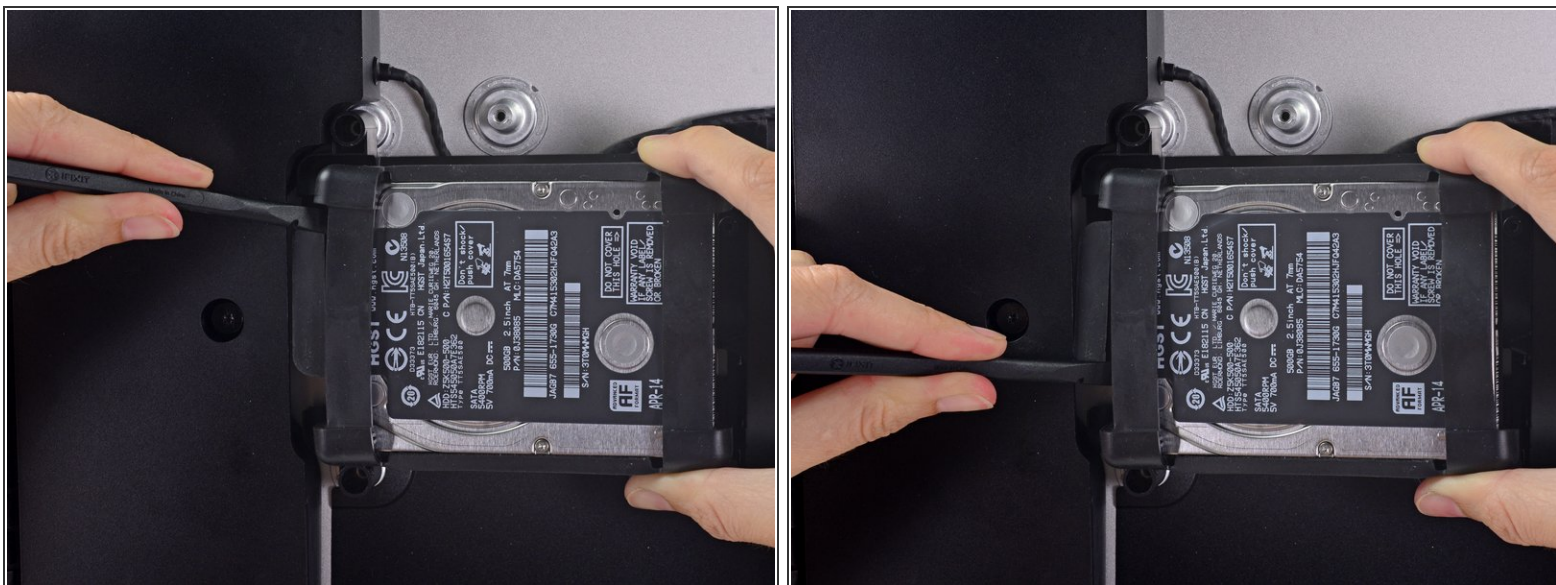
Step 1 — Hard Drive Assembly



- Lift the hard drive from the edge nearest the logic board and pull it slightly out of its recess.

⚠ The hard drive is attached by a single SATA power/data cable—do **not** attempt to fully remove it from the iMac yet.

Step 2



- Use a spudger to disconnect the single SATA power and data combo cable by gently prying its large plastic connector away from the hard drive.

Step 3



- Remove the hard drive assembly from the iMac.

To reassemble your device, follow these instructions in reverse order.