



iMac Intel 21.5" Retina 4K Display (2017) RAM and SATA Hard Drive Upgrade

Max out your iMac by replacing the RAM and SATA hard drive with better upgrades.

Written By: Sam Goldheart



INTRODUCTION

This guide details removing the logic board in a 2017 iMac 4K in order to upgrade the RAM and the SATA hard drive (for example, if you purchased the Max Your Mac kit).

Some images in this guide were taken from the 2015 model, which has some small visual differences.

If you are replacing/upgrading your hard drive, be sure to [clone your existing hard drive](#) onto the replacement drive prior to performing this upgrade to keep your files and operating system in place.

This guide is marked "potentially dangerous" because it requires you to handle a power supply that contains large capacitors. Unplug the iMac and hold the power button down for at least 10 seconds to help discharge the capacitors. Handle the board by the edges and do not touch surface components.



TOOLS:

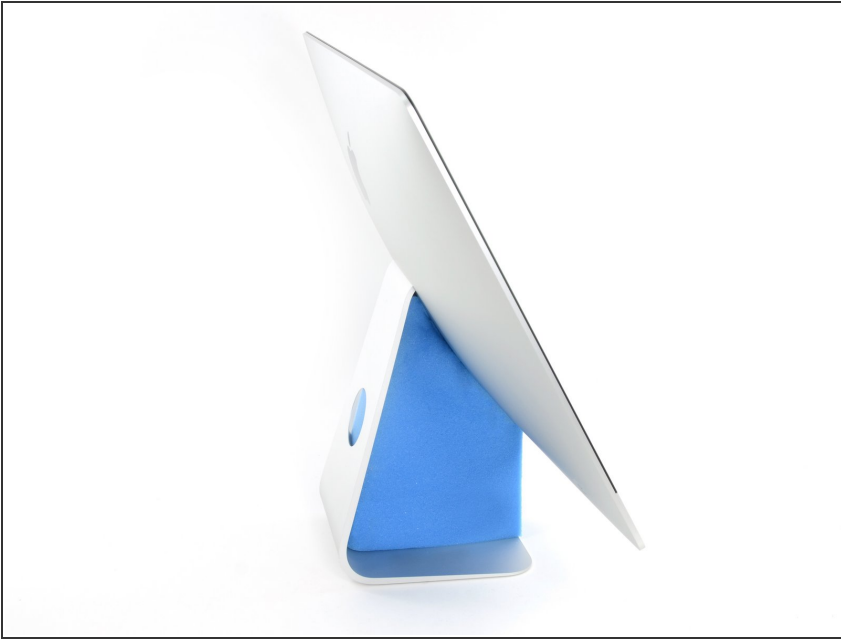
- [Plastic Cards](#) (1)
- [iMac Opening Tool](#) (1)
- [Tweezers](#) (1)
- [Spudger](#) (1)
- [iMac Service Wedge](#) (1)
- [Phillips #00 Screwdriver](#) (1)
- [T10 Torx Screwdriver](#) (1)
- [T8 Torx Screwdriver](#) (1)
- [T5 Torx Screwdriver](#) (1)



PARTS:

- [Max your Mac for iMac Intel 21.5" Mid 2017 \(RAM and SSD Upgrade Kit\)](#) (1)
- [iMac Intel 21.5" \(2012-2017\) Adhesive Strips](#) (1)

Step 1 — Display Assembly

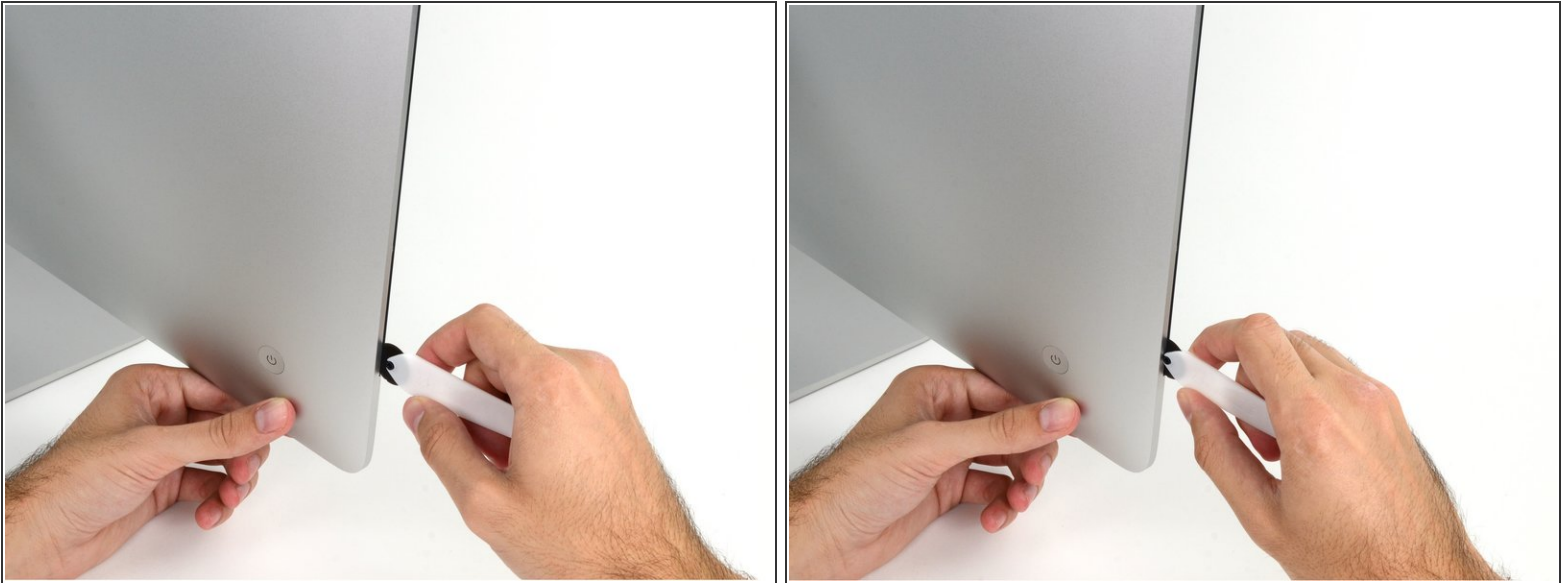


i With the hinge free to move, the iMac will be unbalanced and hard to work on. Repairs are fast and easy with an [iMac service wedge](#), but can be completed without one.


- **Before beginning any work on your iMac:** Unplug the computer and press and hold the power button for ten seconds to discharge the power supply's capacitors.

! **Be very careful** not to touch the capacitor leads or any exposed solder joints on the back of the power supply. Only handle the board by the edges.

Step 2



- Starting on the left of the display, near the power button, insert the iMac Opening Tool into the gap between the glass panel and the rear enclosure.

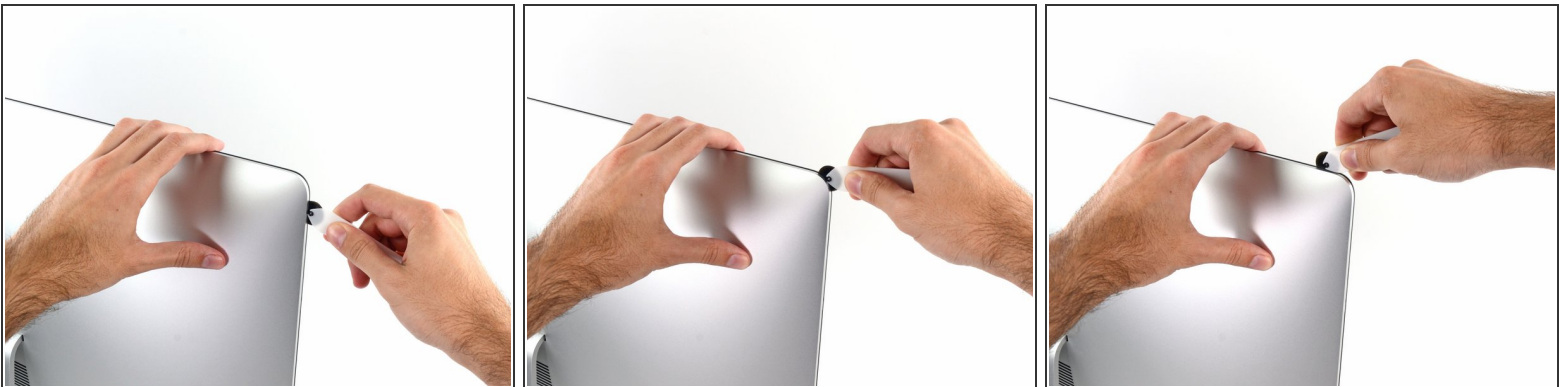
 The hub on the iMac Opening Tool will keep you from pushing the wheel in too far. If using a different tool, insert no more than 3/8" into the display. Otherwise, you risk severing antenna cables and causing serious damage.

Step 3



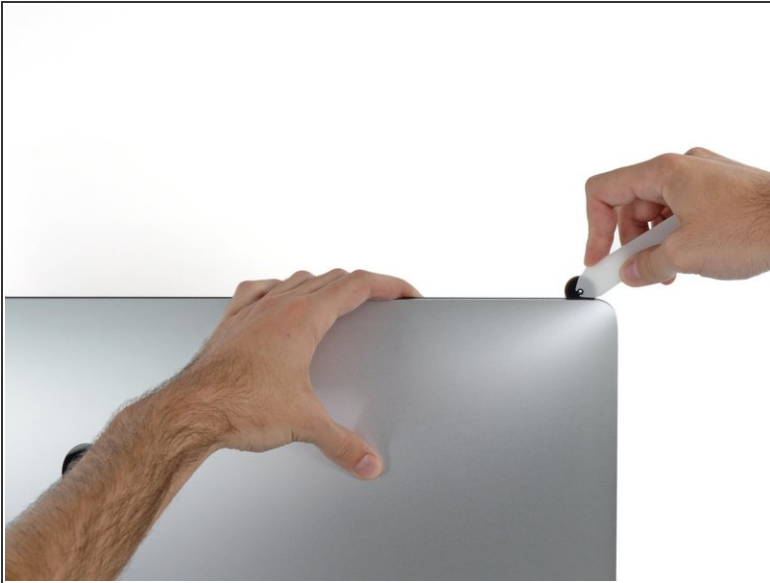
- Use the tool like a pizza cutter—roll it along through the gap, and it will cut the foam adhesive through the center.
- ⓘ Be sure to always push with the handle behind the cutting wheel. If you pull, the wheel might get pulled out of the handle.
- Run the tool up along the left side of the display.

Step 4



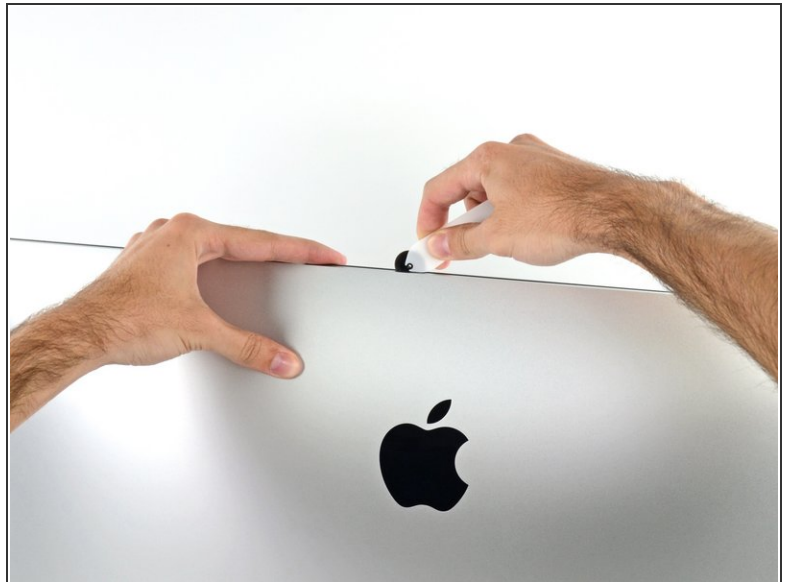
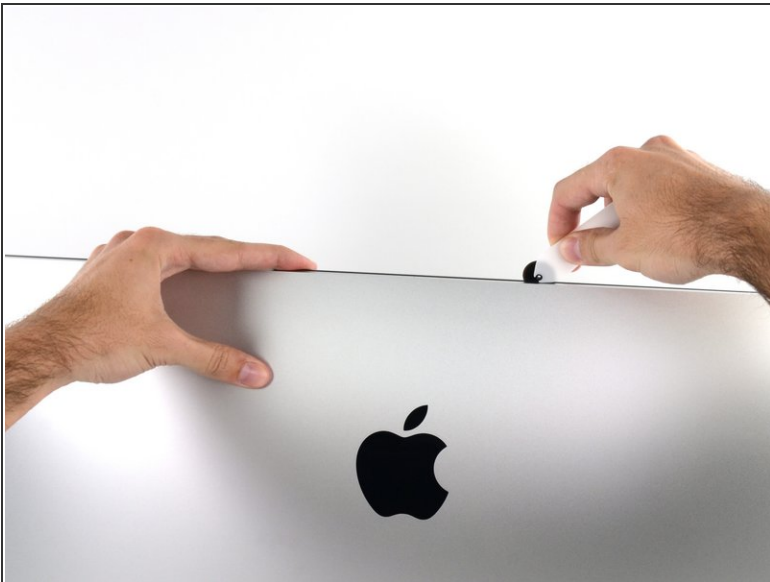
- Continue running the tool up around the top left corner.

Step 5



- Cut the adhesive along the top left of the display.

Step 6



- Continue along the top of the display.

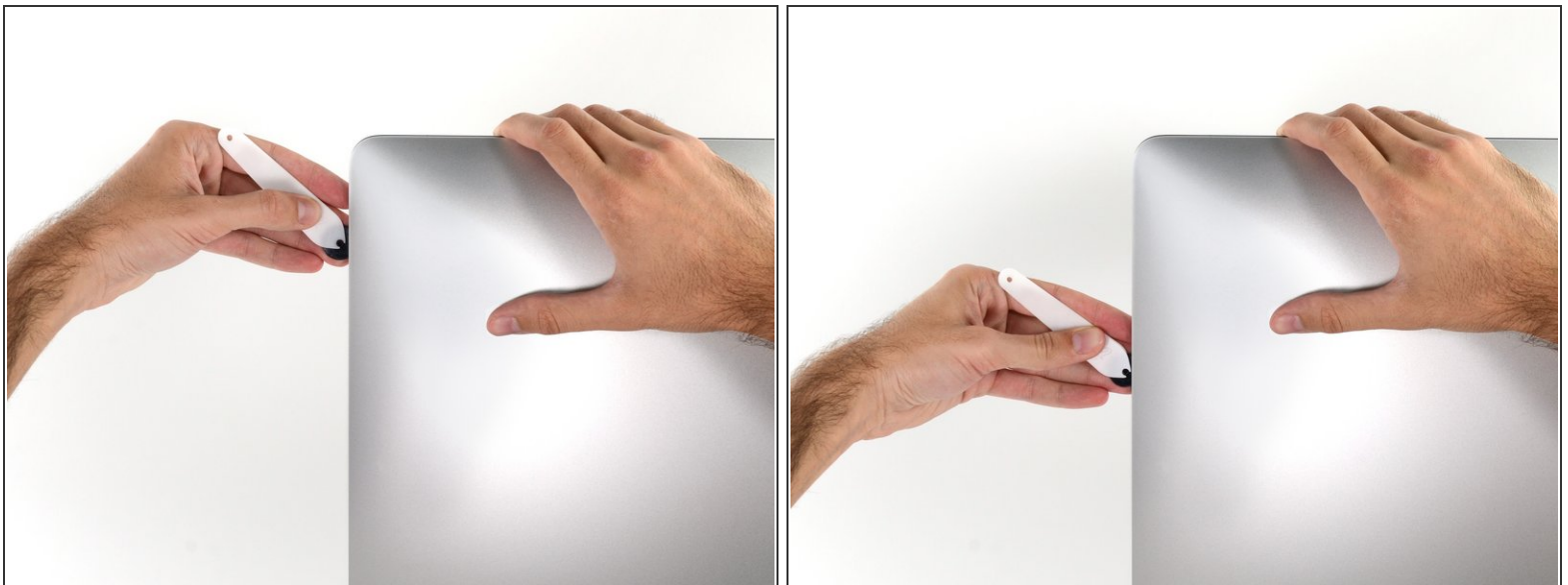
i You may want to run the tool back and forth through what you've already cut a few times, to ensure you get as much of the adhesive separated as possible.

Step 7



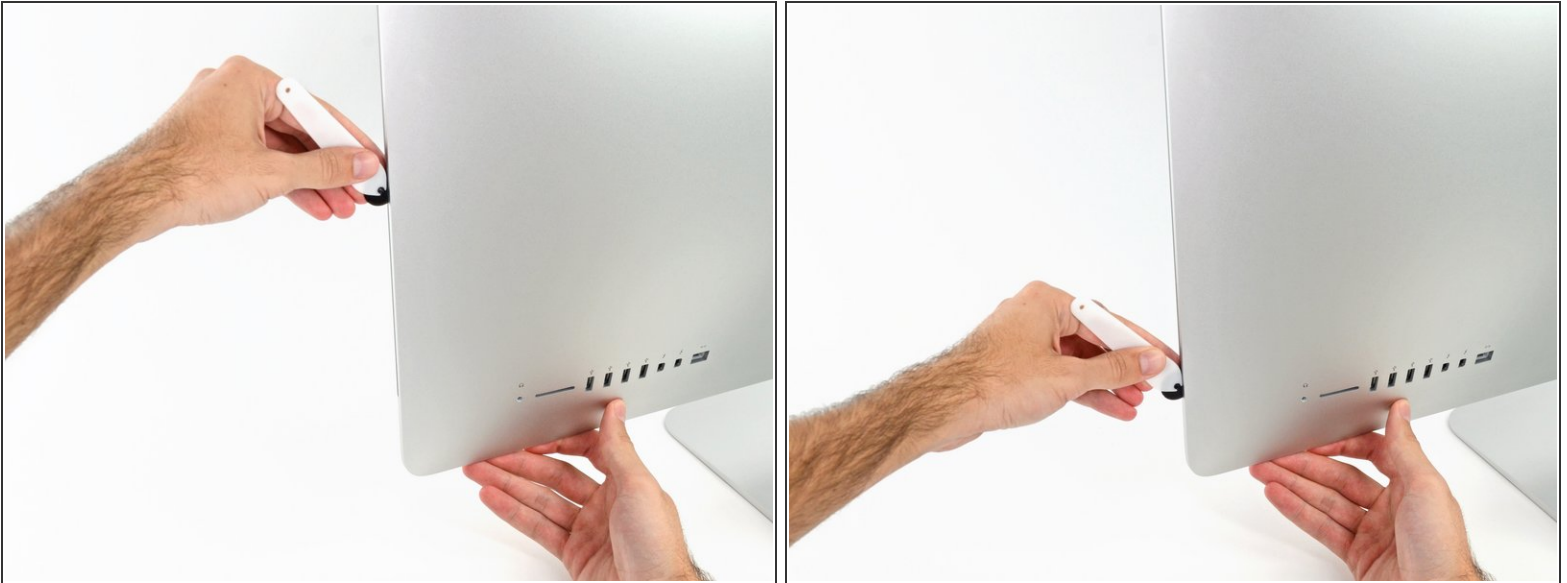
- Push the tool around the top right corner of the display.

Step 8



- Wheel the tool down along the right side of the display.




Step 9



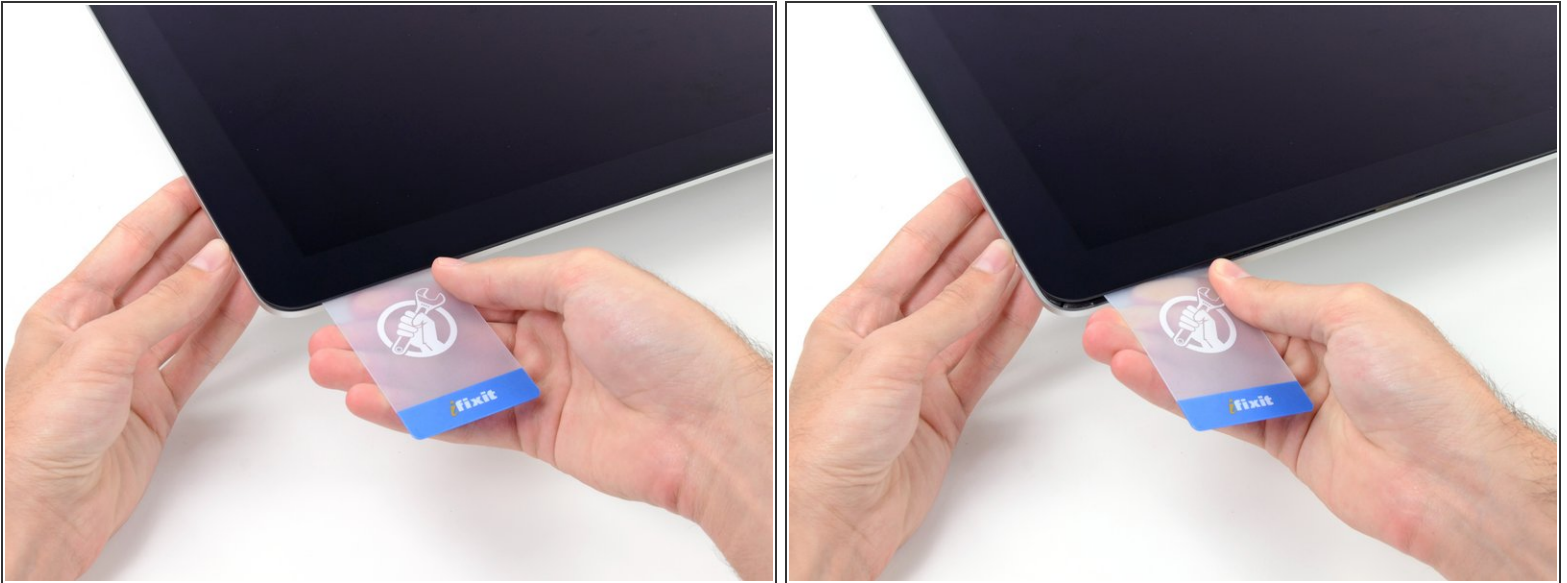
- Finish pushing the opening tool to the bottom of the right side of the display.
- ⓘ At this point, you'll want to run the tool back around the entire display, to ensure you cut as much adhesive as possible.

Step 10



-  While the opening tool cut most of the adhesive, the display will still be slightly adhered to the case. A plastic card will be necessary to free up the last of this adhesive.
-  Set the iMac face-up on a table.
 - Starting from the top right corner of the iMac, wedge a plastic card between the display and frame.
-  Be careful **not** to insert the plastic card more than 3/8", or you may damage internal components.

Step 11



- Gently twist the plastic card sideways to create a gap between the display and frame.
- Move slowly and be careful not to stress the display glass too much—you only need to make a gap of about 1/4".

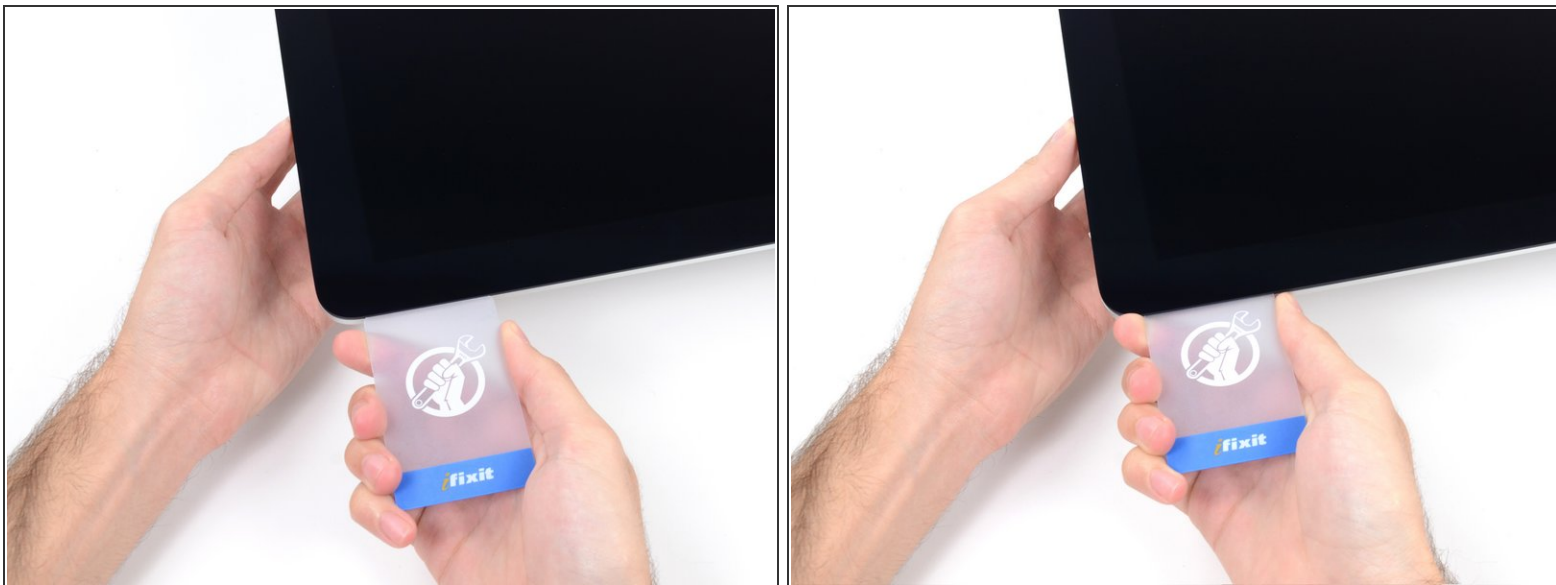
Step 12



- Slide the card toward the center of the display to cut any of the remaining adhesive along the top right corner of the iMac.

 Be sure to **stop** before the iSight camera, or you may damage it.

Step 13



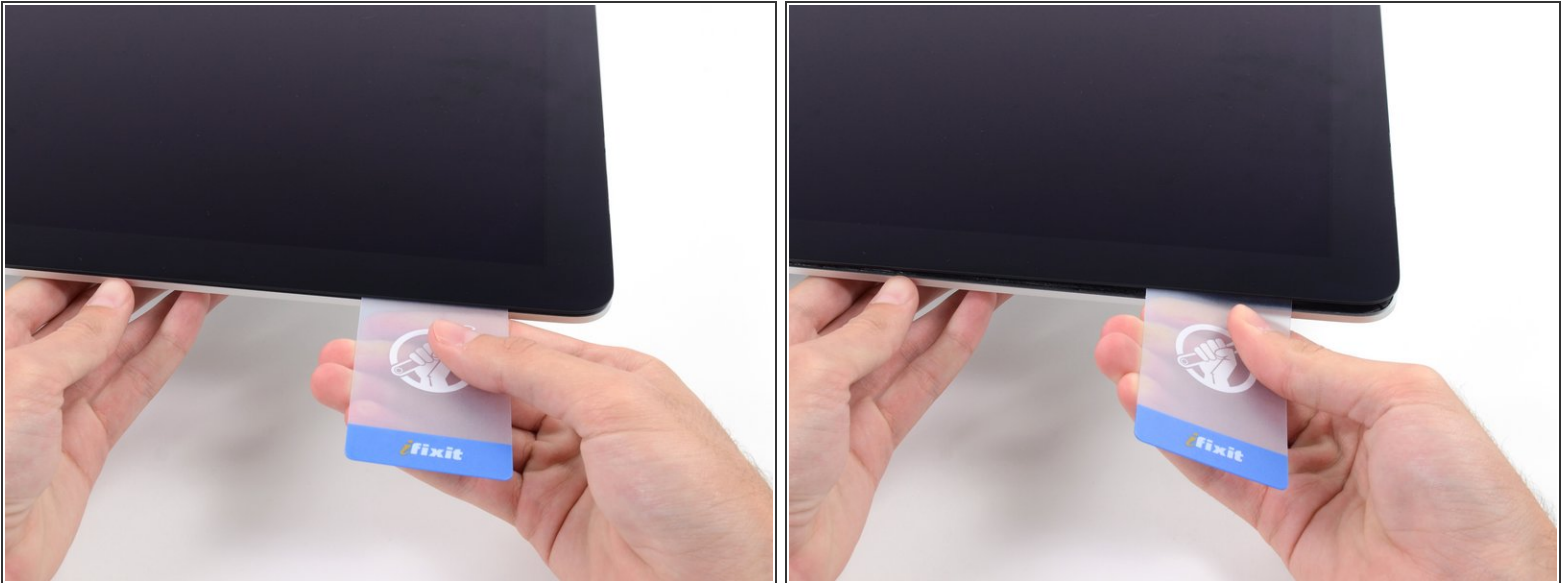
- Wedge the plastic card into the top right corner once again, and leave it there to prevent the adhesive from resticking.

Step 14



- Insert a second plastic card into the gap between the display and frame near the top left corner of the iMac.

Step 15



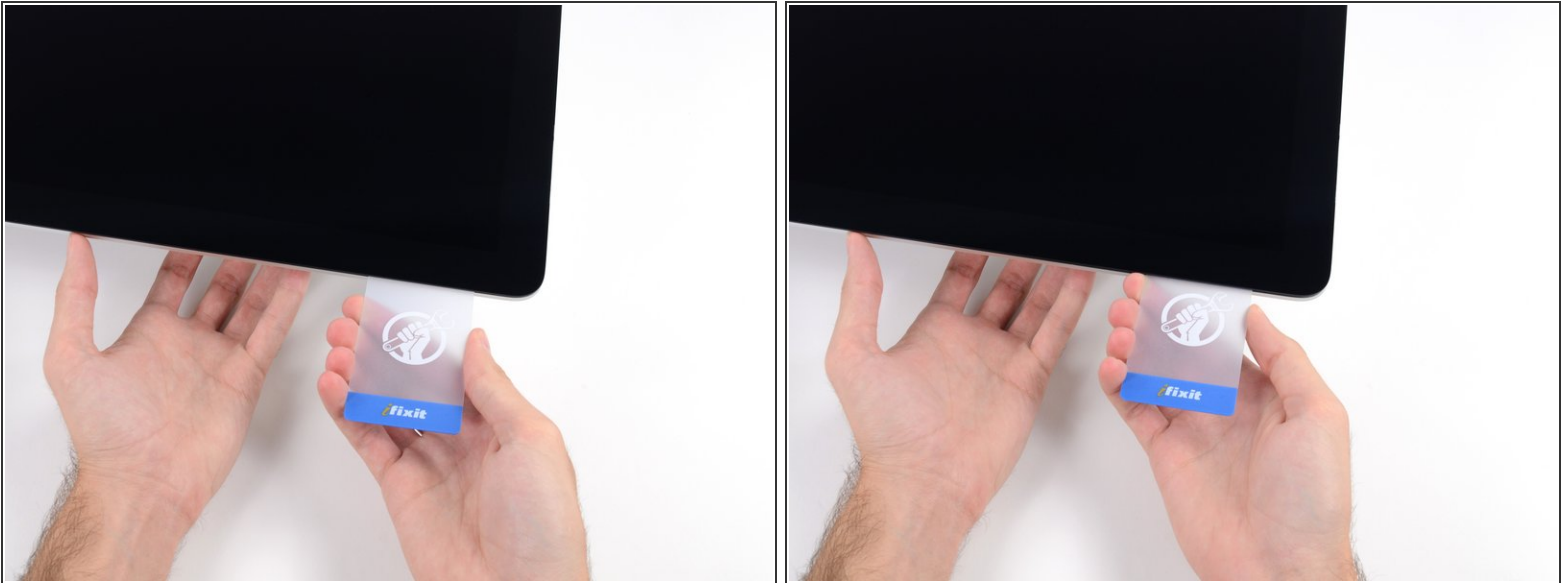
- Gently twist the card upward, slightly increasing the space between the display and frame.
- ⓘ As with the other side, twist slowly to allow the adhesive time to separate, and be careful not to over-stress the display glass.

Step 16



- Slide the plastic card toward the center, again stopping just before the iSight camera.

Step 17



- Wedge the plastic card back into the top left corner.

Step 18



- With both plastic cards inserted as shown near the corners, gently twist the cards sideways to increase the gap between display and case.
- ⓘ If there are any sections that seem to stick and won't separate, stop twisting and use one of the cards to cut the remaining adhesive.
- Begin to lift the top of the display up from the frame.
- ⚠ Only lift the display a few inches—the display data and power cables are still connected to the logic board.

Step 19 — Display Assembly Cables



- ⓘ Lift the display up enough to have easy access to the connector, but not so much that you stretch the cables and stress their connections (about 8").
- Hold the display with one hand while using your other hand to unplug the display power cable.

Step 20



- Continuing to support the display with one hand, flip up the metal retaining bracket on the display data cable.
- Carefully pull the display data cable from its socket on the logic board.
- ⚠ Be sure to pull the display data cable connector straight out of its socket, keeping it parallel to the motherboard, to avoid damaging it.

Step 21 — Display Assembly Separation



- Lift the display up to a near-vertical position.

i At this point there is still a strip of adhesive along the bottom of the display that will hold the display to the frame like a hinge. You can loosen this adhesive by working the display up and down a few times.

Step 22




i If necessary, a plastic card can be used to cut any remaining sections of the bottom adhesive strip.

Step 23

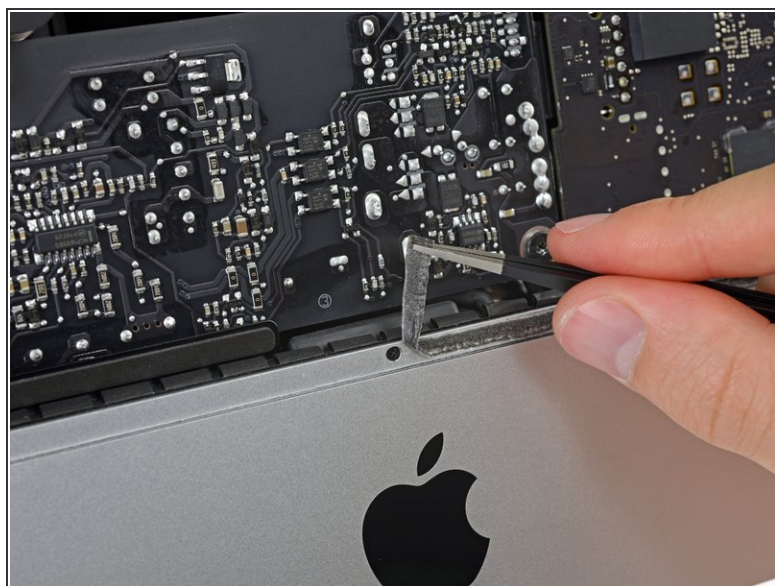


- Lift the display up from the frame and remove it from the iMac.
- It may be necessary to slowly lift from one side to peel against the remaining adhesive.

 Be very careful handling the display—it's big, heavy, and made of glass.

-  After the adhesive is cut, it cannot be used to re-seal the display in place. Follow [this guide](#) to replace the adhesive strips that secure the display to the rear enclosure.

Step 24 — Lower Support Bracket



- Remove the following five Phillips screws holding the lower support bracket in place:
 - Four 3.2 mm screws
 - One 1.7 mm screw
- ⓘ You may need to peel up the display adhesive lining the bottom edge of the iMac enclosure to access the screws.

Step 25



- Remove the lower support bracket (a.k.a. "chin strap") from the iMac enclosure.

Step 26 — Hard Drive Brackets



- Remove the following T10 Torx screws securing the hard drive brackets to the iMac:
 - Two 21 mm screws
 - One 9 mm screw
 - One 27 mm screw


Step 27



- Remove the left and right hard drive brackets from the iMac.

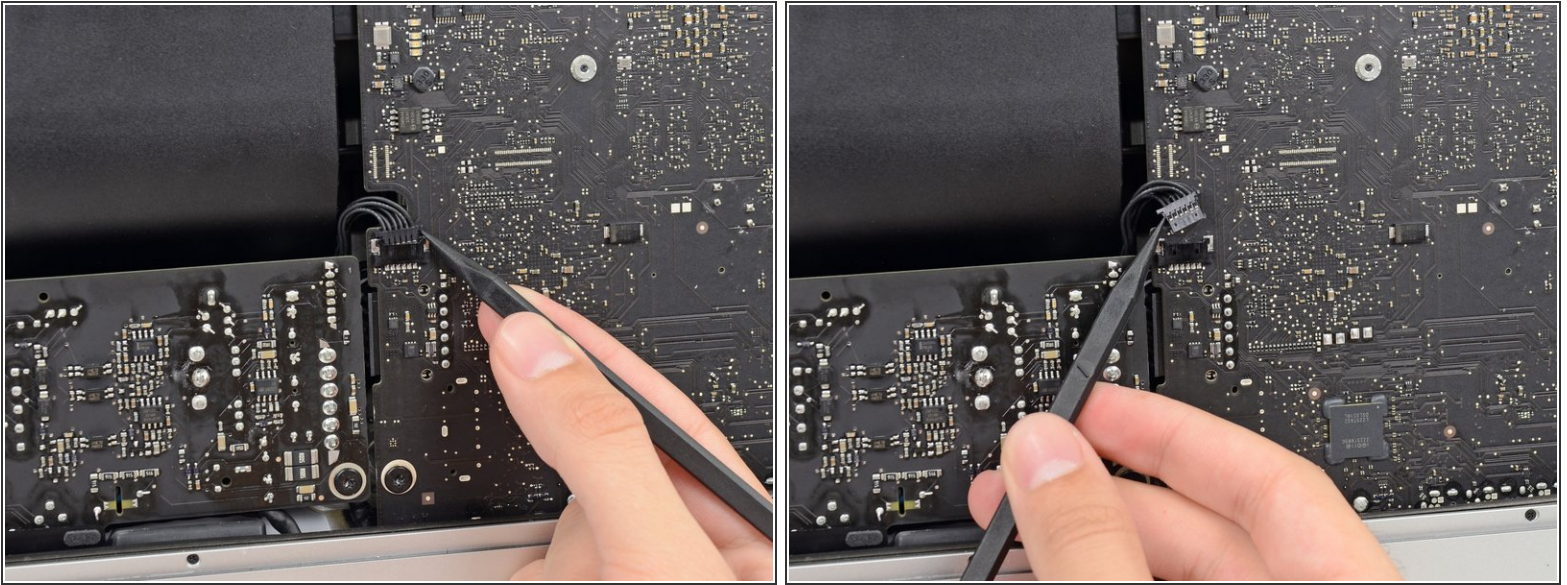
Step 28 — Power Supply



 The next few steps bring your hands close to the exposed face of the power supply. **Do not** touch the face of the power supply or any of the exposed solder. Touching it risks a high voltage shock from the many large capacitors attached to the board.

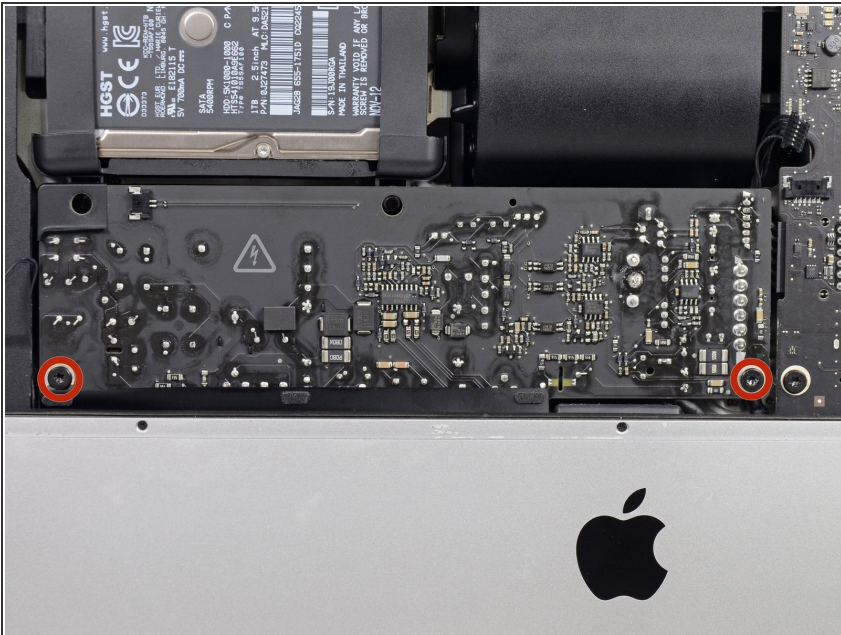
- Use the tip of a spudger to push each side of the power button cable connector and gently *walk* it out of its socket.

Step 29



- Use the tip of a spudger to push each side of the power supply control cable connector and gently *walk* it out of its socket.

Step 30



- Remove the two 7.2 mm T10 Torx screws securing the power supply to the rear enclosure.
- ⓘ In newer model iMacs these are 7.2 mm T8 Torx screws.

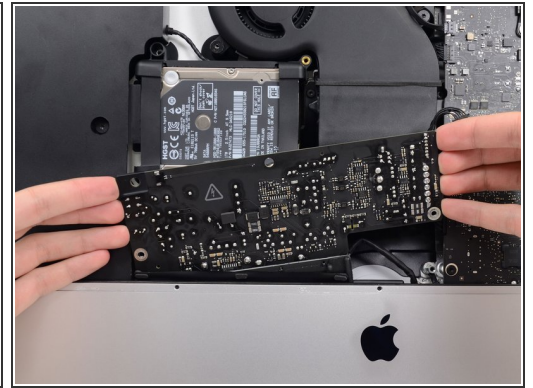
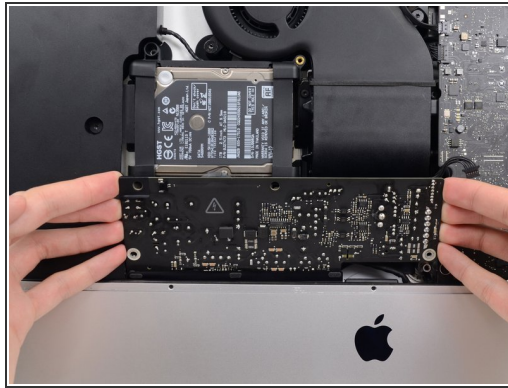
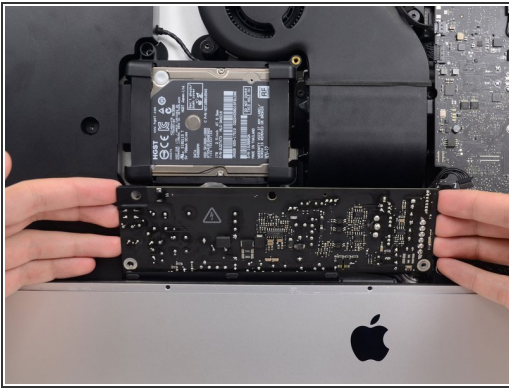
Step 31



⚠ When working on the power supply, **be very careful** not to touch the capacitor leads or any exposed solder joints on the back of the power supply. Only handle the board by the edges.

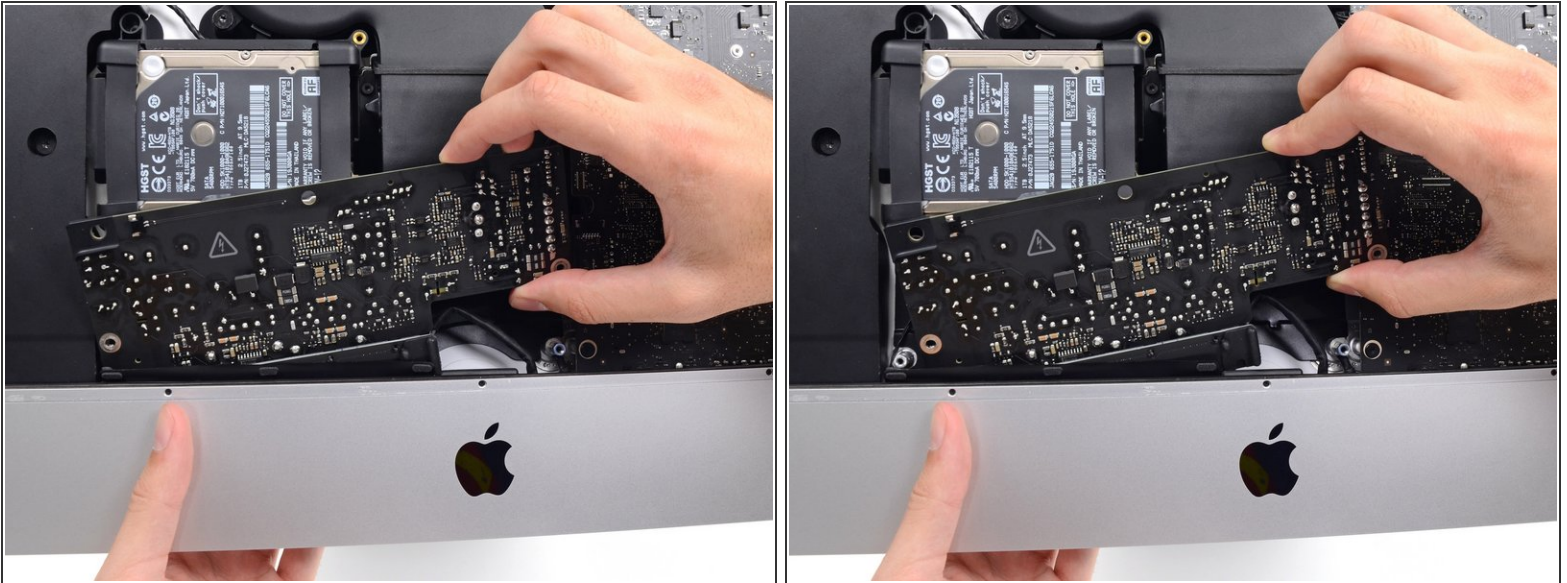
- Tilt the power supply forward.

Step 32



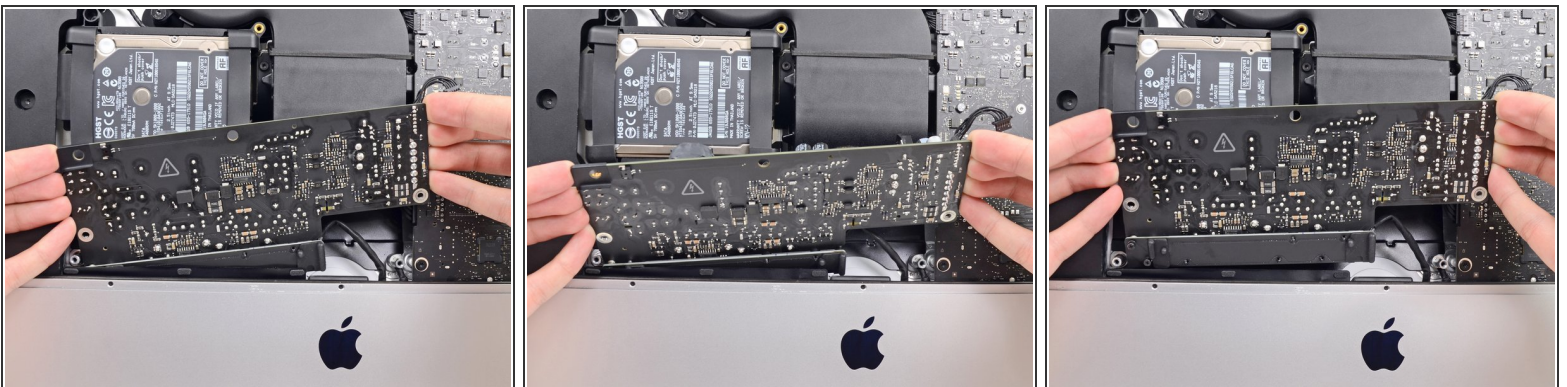
- Pull the power supply slightly up and out from the rear enclosure.
- Rotate the power supply counterclockwise, lifting the right side up about an inch higher than the left.

Step 33



- Slide the power supply to the right to clear the screw posts on the rear enclosure.

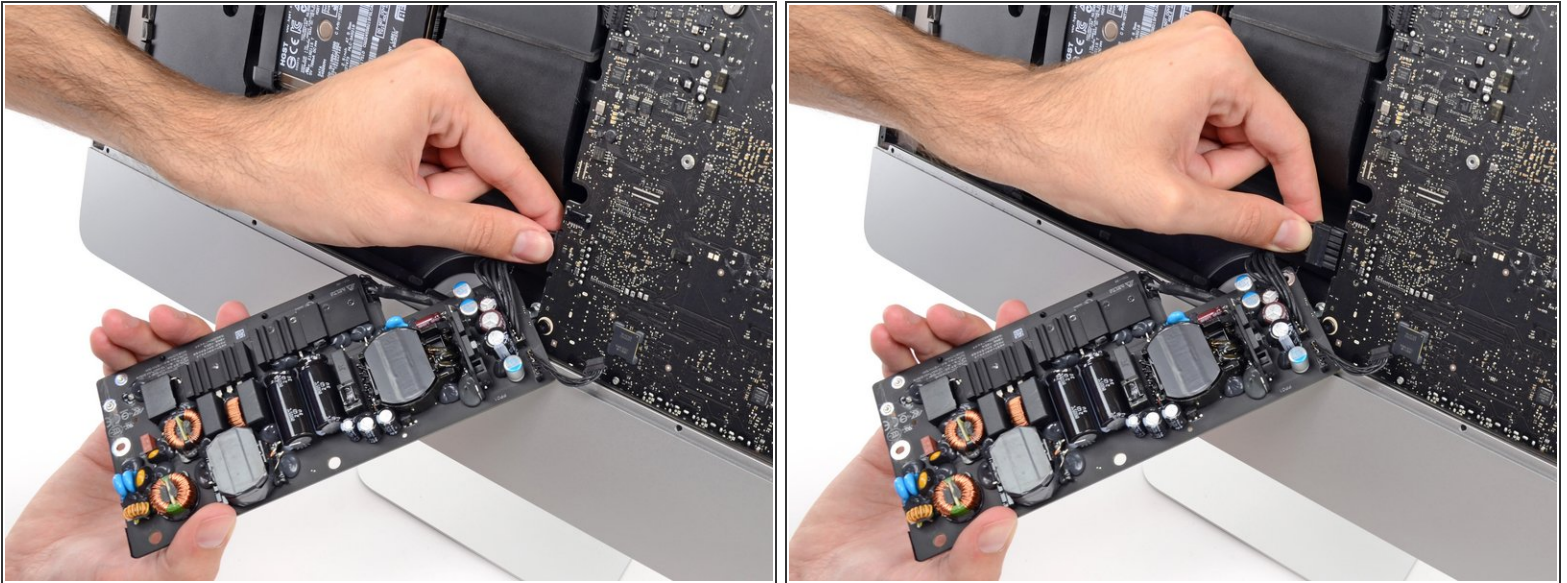
Step 34



- Rock the power supply forward and remove it from its recess in the rear enclosure.

⚠ Do not try to completely remove the power supply from the iMac yet—it is still connected to the logic board.

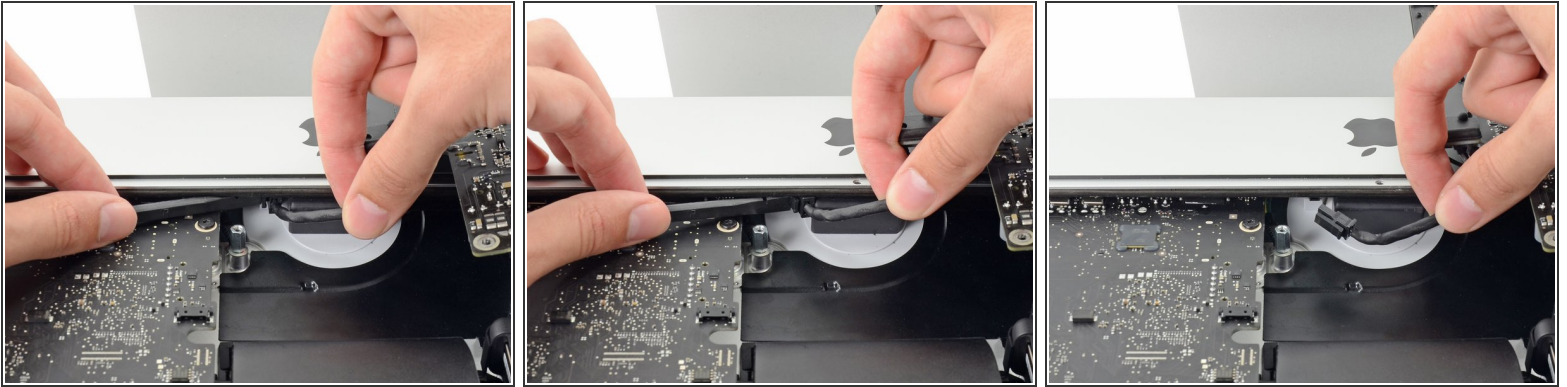
Step 35



⚠ Be very careful not to touch the capacitor leads or any exposed solder joints on the back of the power supply. Only handle the board by the edges.

- i** Flip the power supply over to access the DC power cable connection behind the logic board.
- Squeeze the tab on the back side of the DC power cable connector and pull it straight out of its socket on the back of the logic board.

Step 36



 You may find it helpful to set the iMac down on its back for the next couple of steps.

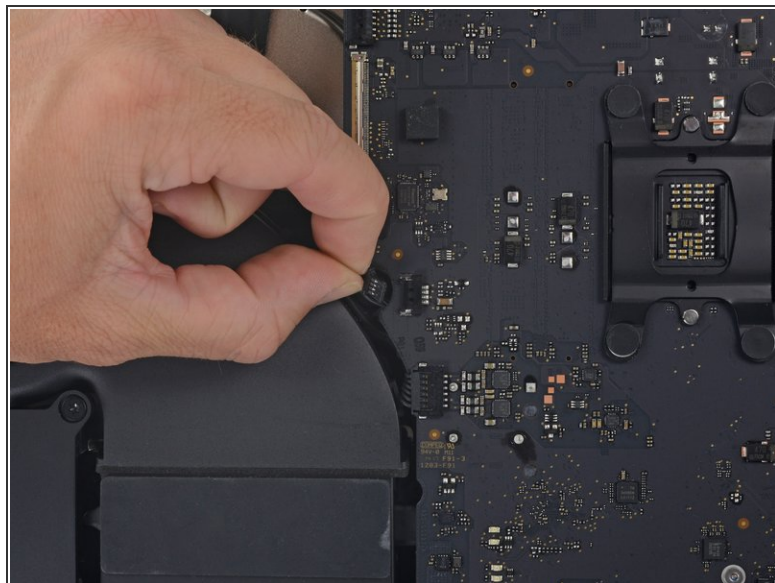
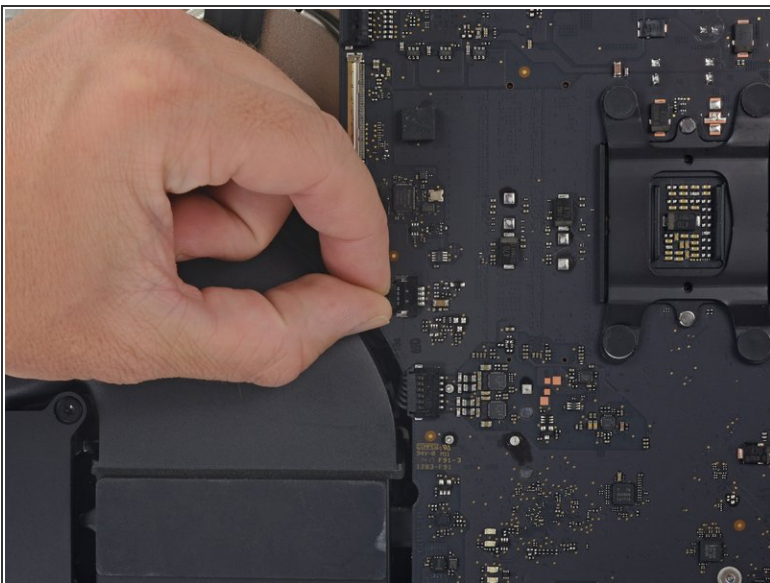
- Use the flat end of a spudger to press the clip on the side of the AC inlet cable connector inward.
- While pressing on the release clip with the spudger, grasp the AC inlet cable, and pull the connector straight out of its socket.

Step 37



- Remove the power supply from the iMac.

Step 38 — Fan



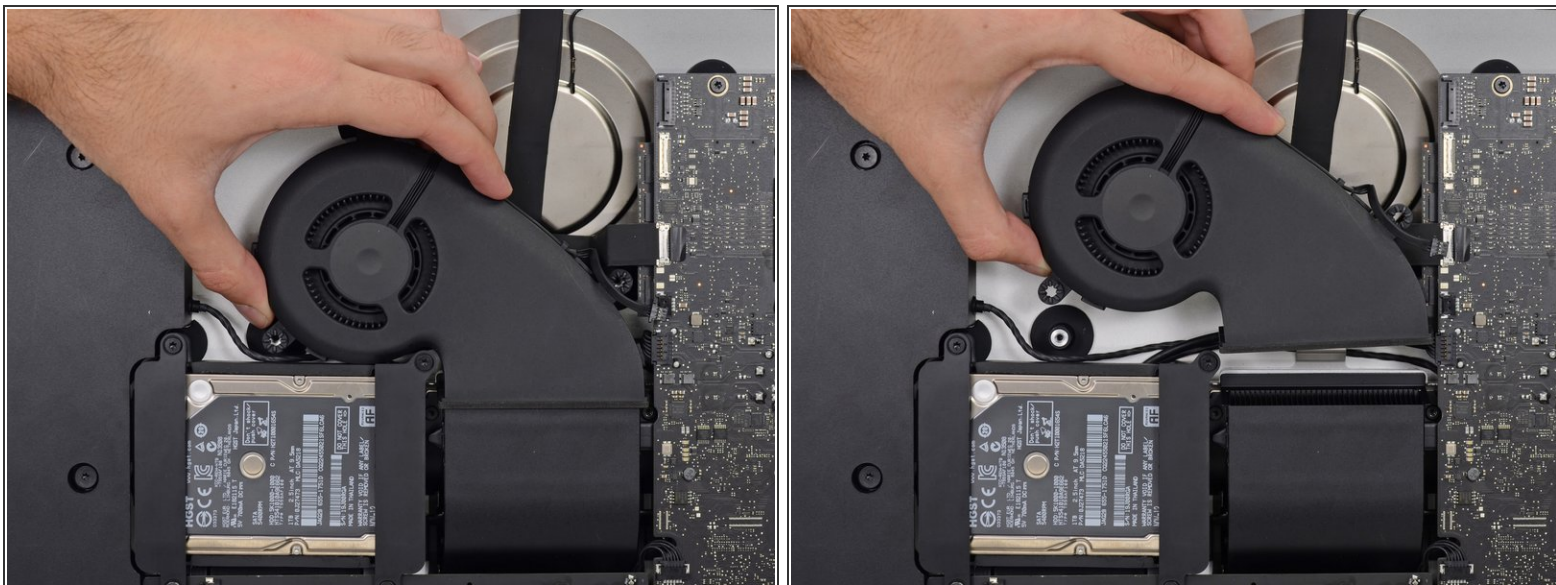
- Gently pull the fan cable connector straight away from its socket on the logic board.

Step 39



- Remove the three 10 mm T10 Torx screws securing the fan to the rear enclosure.
- ⓘ The uppermost screw has a rubber standoff adhered to its head to support the display—leave this in place.

Step 40



- Remove the fan from the iMac.

Step 41 — Hard Drive Assembly



- Lift the hard drive from the edge nearest the logic board and pull it slightly out of its recess.

⚠ The hard drive is still attached by its SATA cable; do not attempt to fully remove it from the iMac yet.

Step 42



- Use a spudger to disconnect the single SATA cable by prying it gently away from the hard drive.
- Remove the hard drive assembly from the iMac.

Step 43 — Hard Drive



- Peel the rubber bumper off one side of the hard drive.
 - Repeat for the other side.
- ☒ When installing a new drive, it's helpful to use double-sided tape to stick the bumpers to your new drive.

Step 44 — Hard Drive Tray



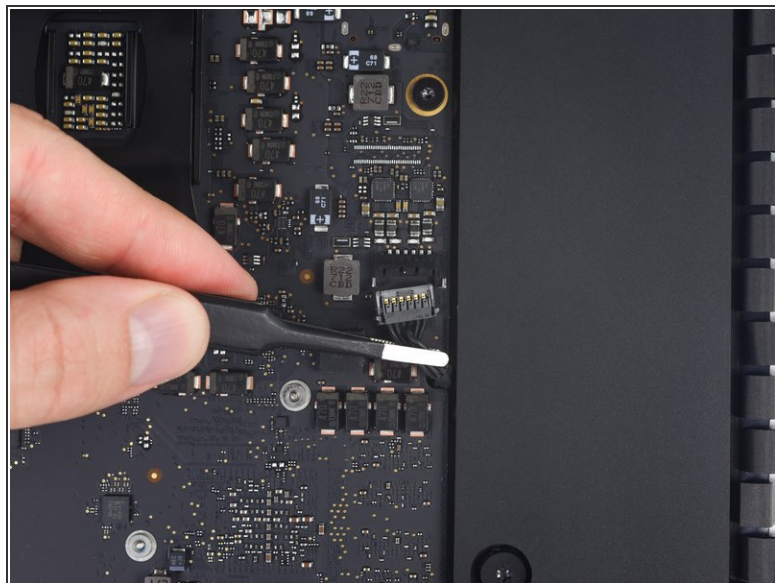
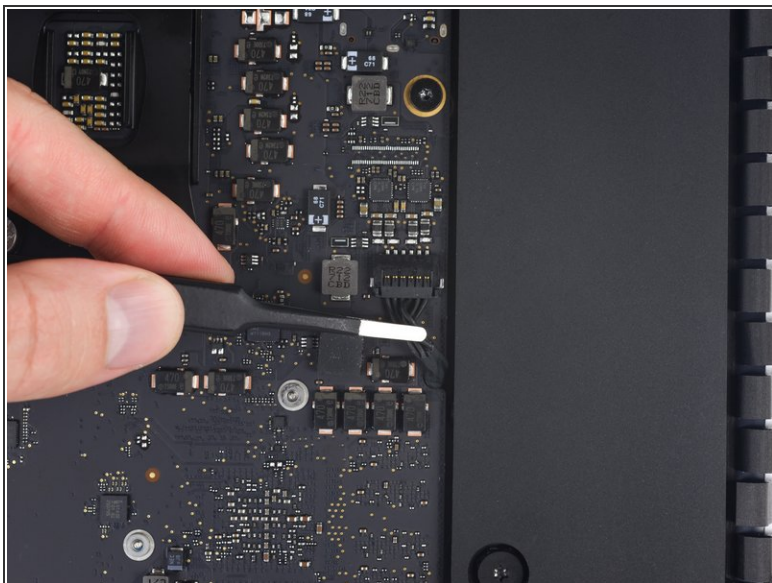
- Remove the 7.3 mm T8 Torx screw securing the hard drive tray to the rear enclosure.

Step 45



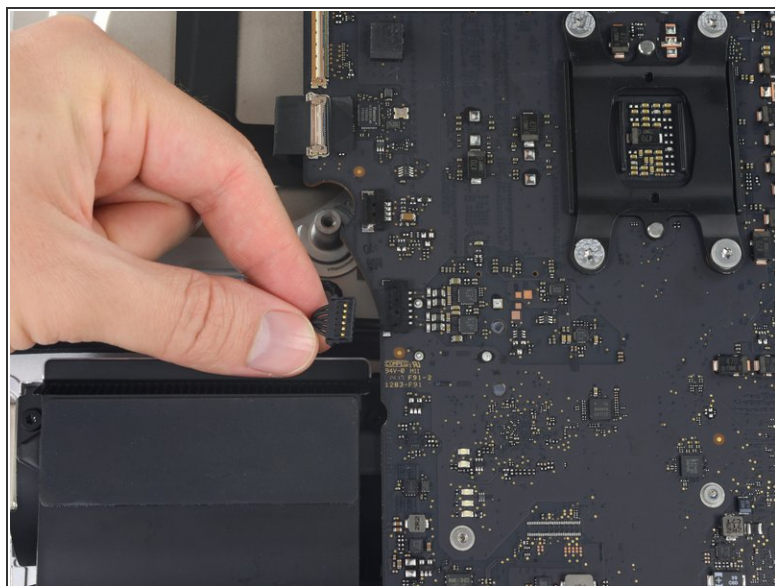
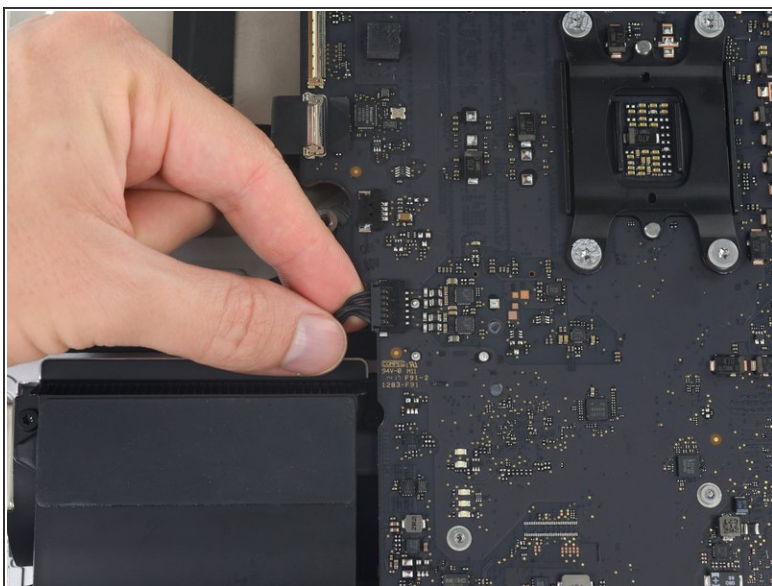
- Remove the hard drive tray.

Step 46 — RAM



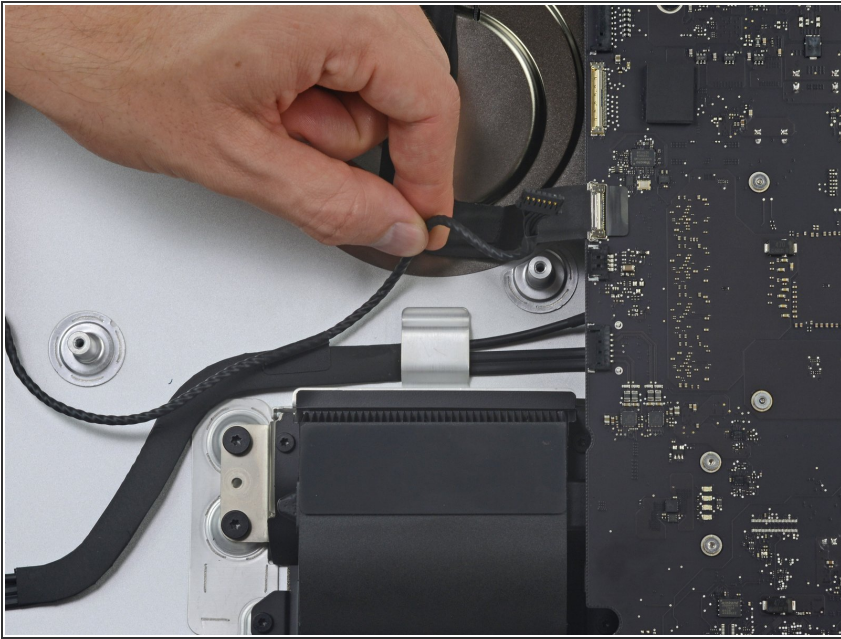
- Gently pull the right speaker cable connector straight down and out of its socket on the logic board.

Step 47



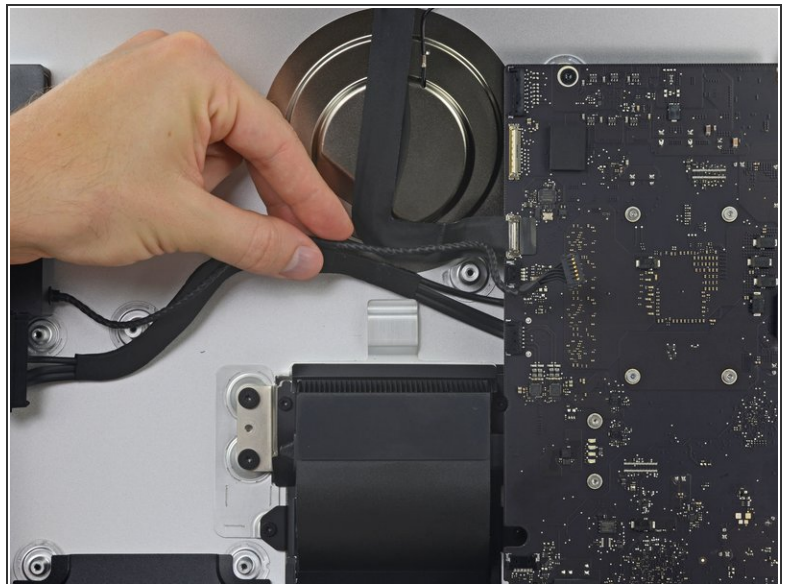
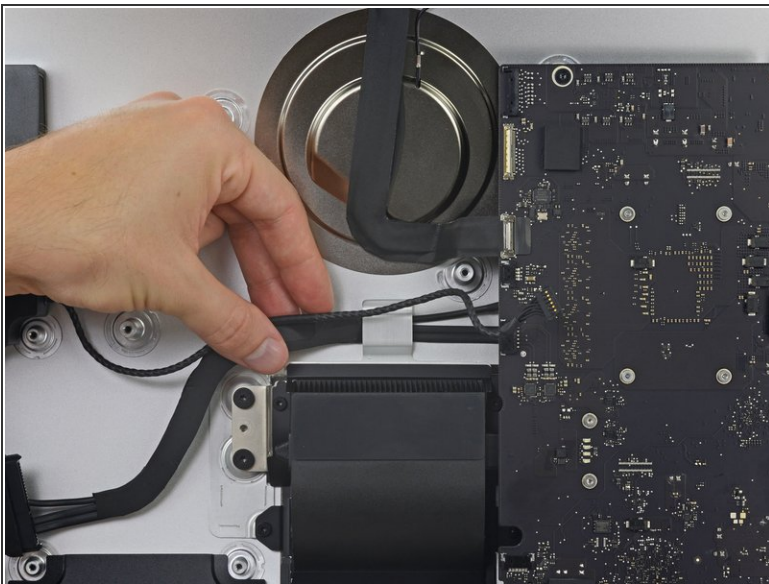
- Gently pull the left speaker cable straight out of its socket on the logic board.

Step 48



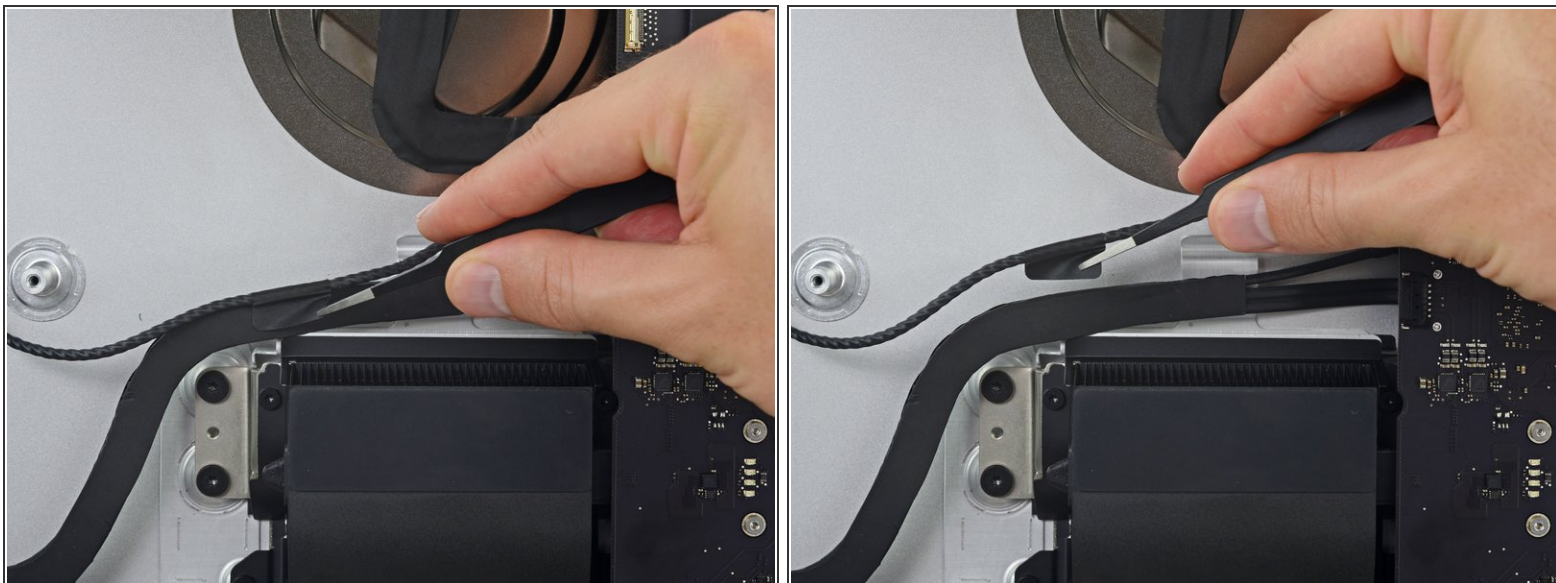
- De-route the left speaker cable by pulling it straight up out of the retaining clip in the back of the rear enclosure.

Step 49



- Similarly to the previous step, de-route the SATA and power cables by pulling the braid straight up out of the retaining clip.

Step 50



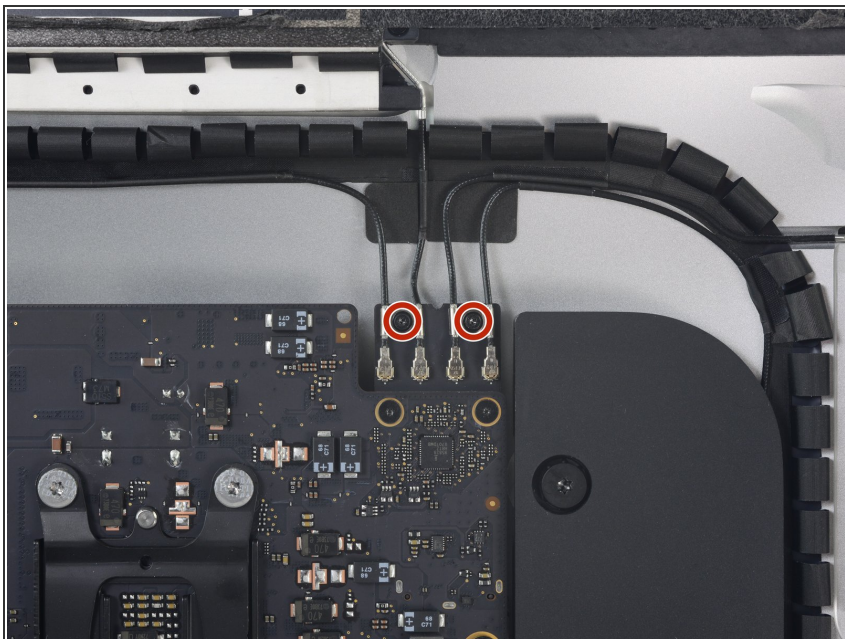
- Peel up the piece of tape connecting the left speaker connector to the SATA power and data cables.

Step 51



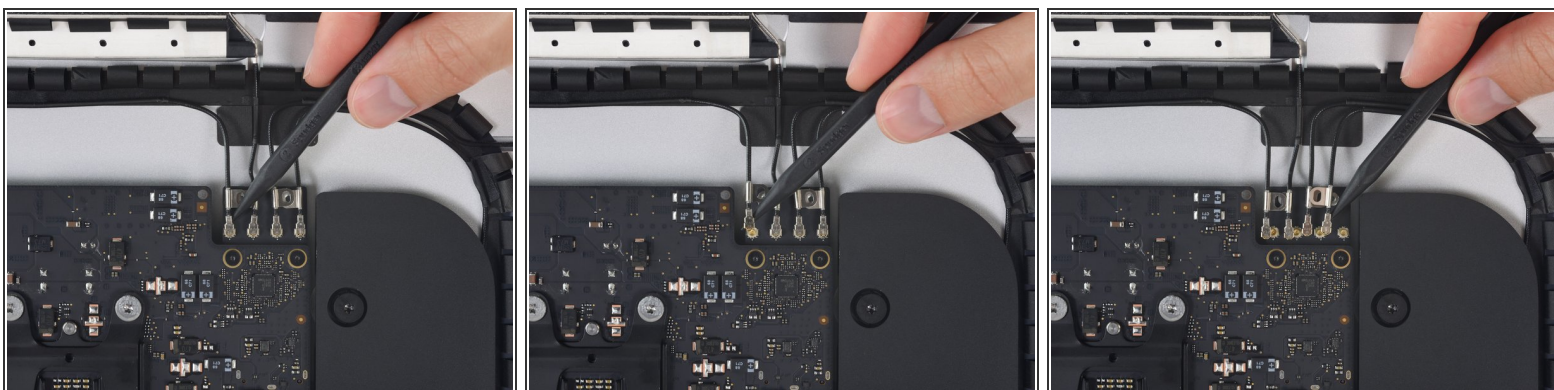
- Flip up the metal retaining bracket on the FaceTime camera cable connector.
 - Pull the FaceTime camera cable straight out of its socket on the logic board.
- ⚠ This is a delicate connector that can be easily damaged.

Step 52



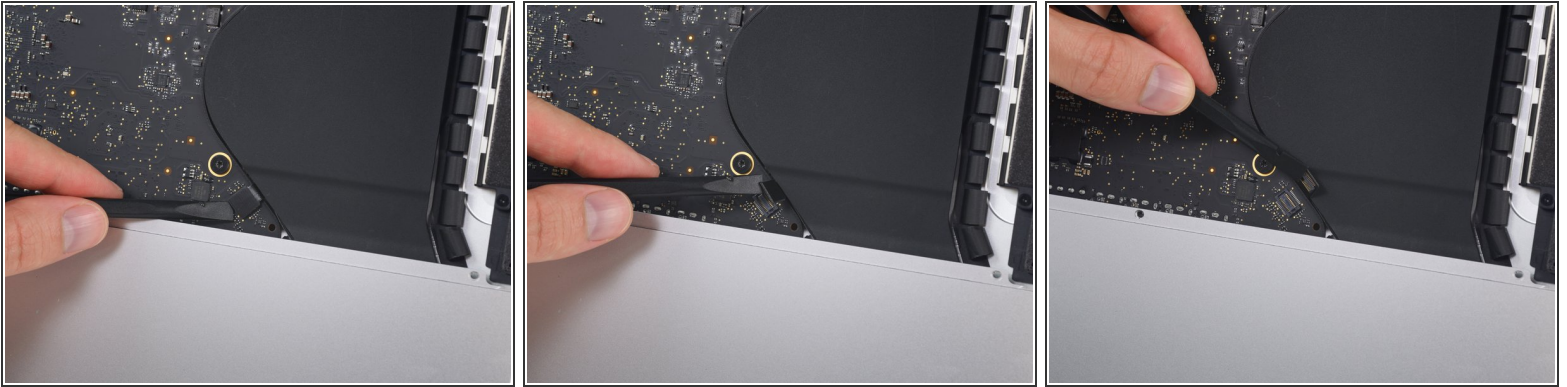
- Remove the two 4.0 mm T5 Torx screws securing the four antenna connectors to the AirPort/Bluetooth card.

Step 53



- Disconnect all four antenna connectors by prying them straight up from their sockets on the AirPort/Bluetooth card.

Step 54



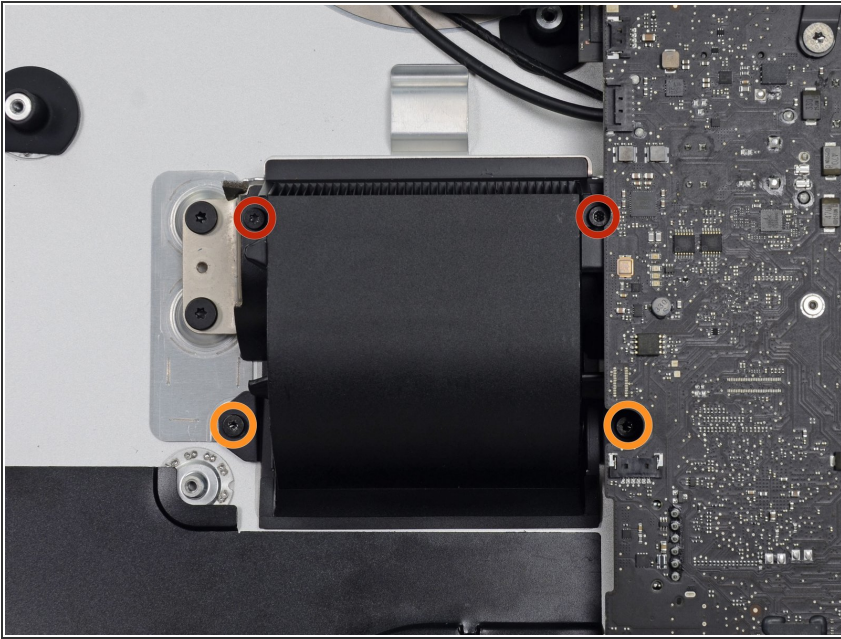
- Use the flat edge of a spudger to pry the headphone jack cable connector from its socket on the logic board.
- ⓘ This connector is located on the bottom right edge of the logic board, near the right speaker.
- Push the cable up and out of the way of the logic board.

Step 55



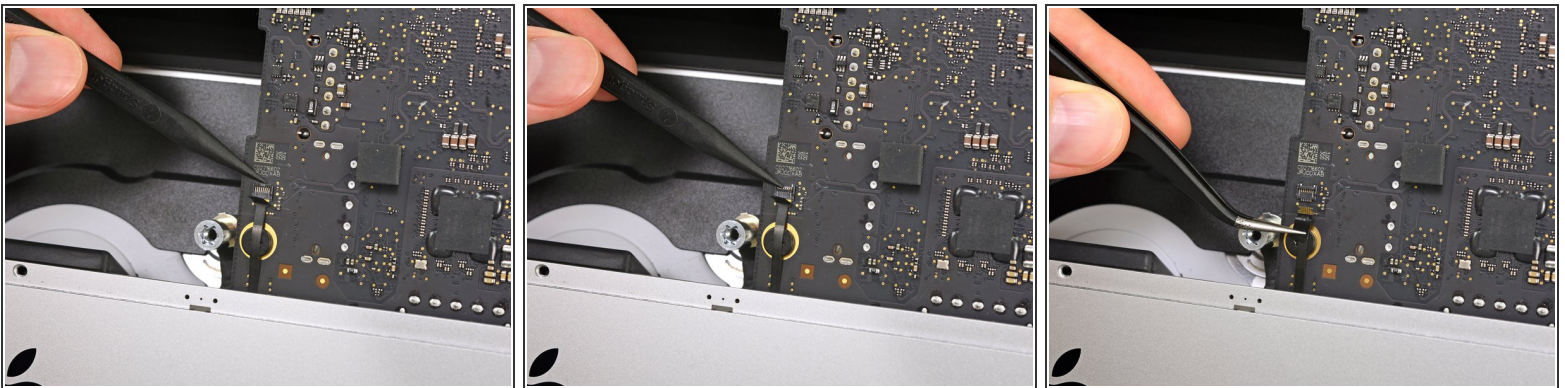
- Peel off the tape covering the exhaust duct.

Step 56



- Remove the following T8 Torx screws securing the exhaust duct to the rear enclosure:
 - Two 6.2 mm screws
 - Two 4.7 mm screws

Step 57



- Flip the latch on the microphone [ZIF connector](#) and pull the cable out of its socket on the logic board.

⚠ The microphone cable is delicate, so be careful not to damage it in later steps. If necessary, gently [tape it down to the front of the iMac's enclosure](#) to keep it out of harm's way.

Step 58



- Remove the four 7.3 mm T8 Torx screws securing the logic board to the rear enclosure.

Step 59



- Tilt the top of the logic board away from the rear enclosure.

Step 60

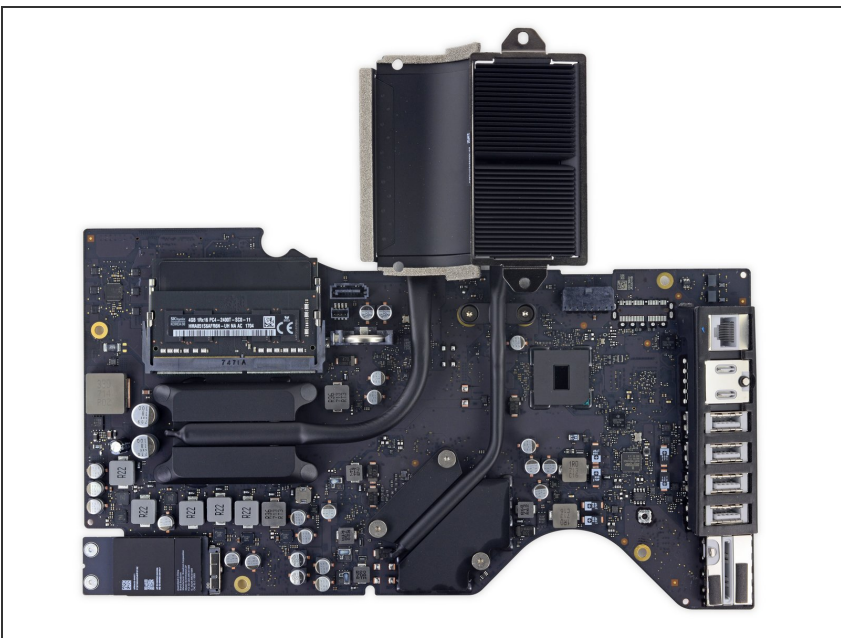


⚠ When removing and installing the logic board, take care not to damage the delicate [microphone ribbon cable](#) at the bottom left.

- Lift the logic board straight up and out of the iMac.

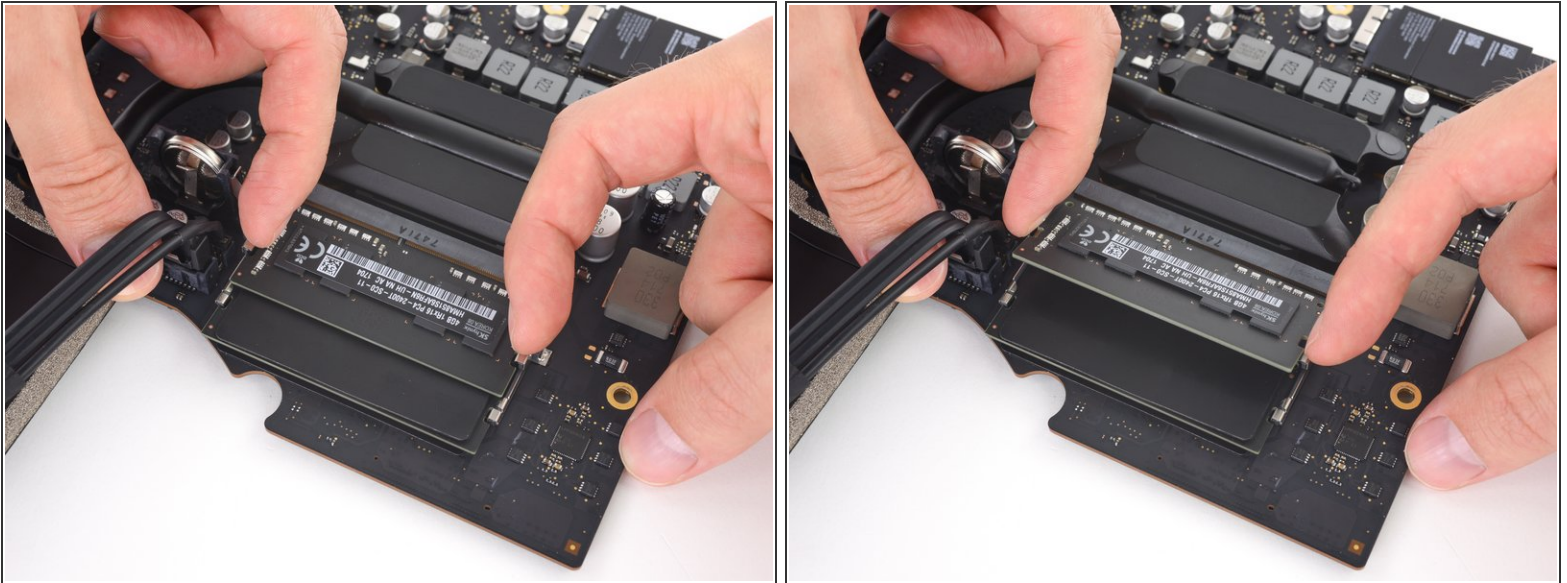
⚠ Be careful not to snag the board on any of the rear enclosure's screw posts.

Step 61



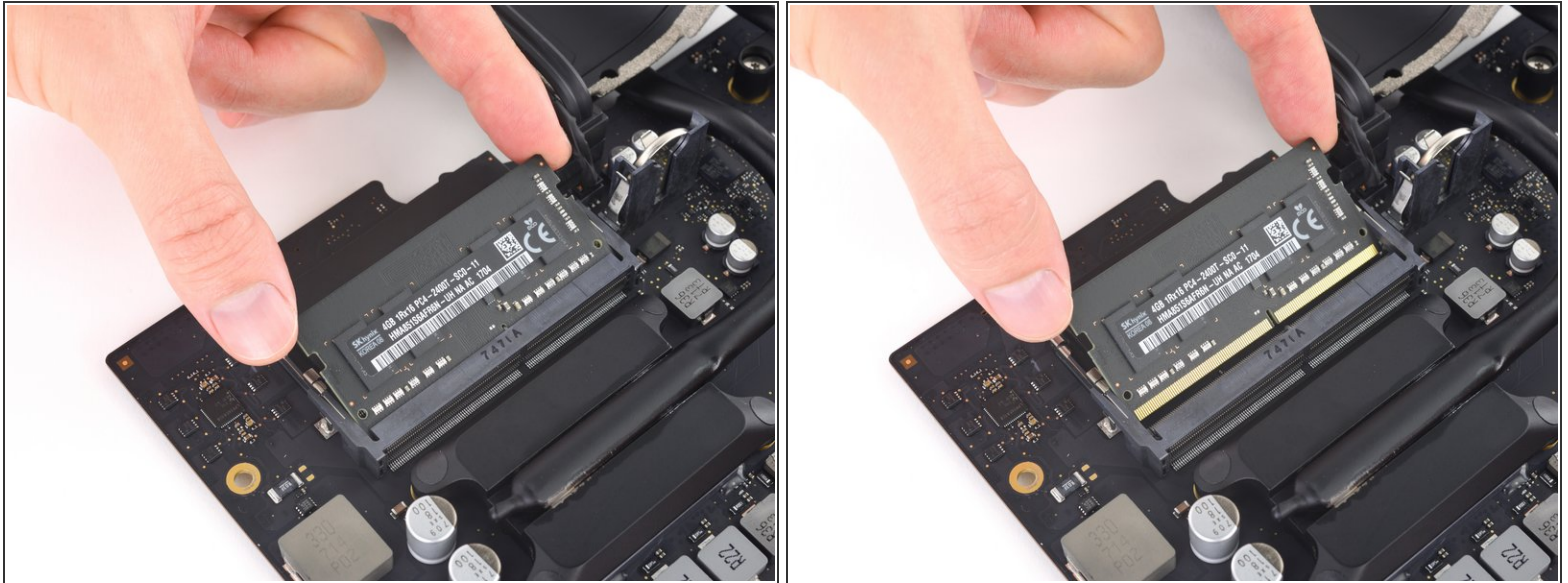
- Handling the board by the edges, flip the logic board over to access the two RAM modules.

Step 62



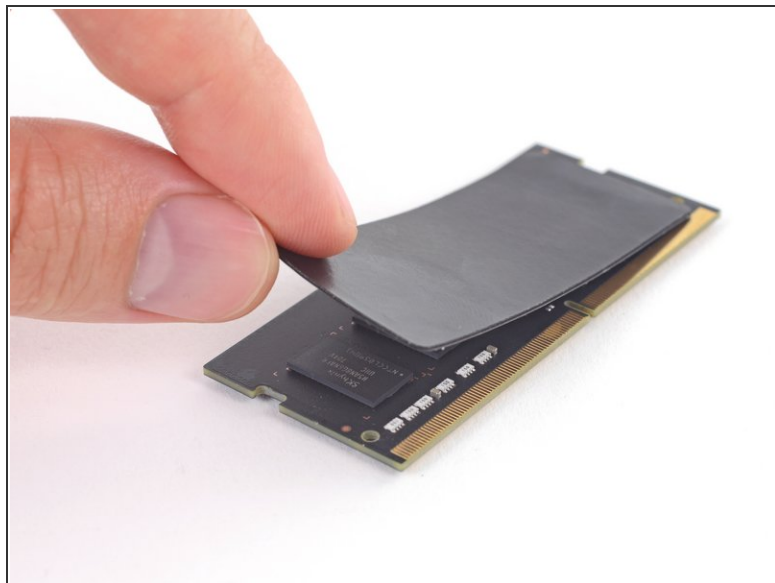
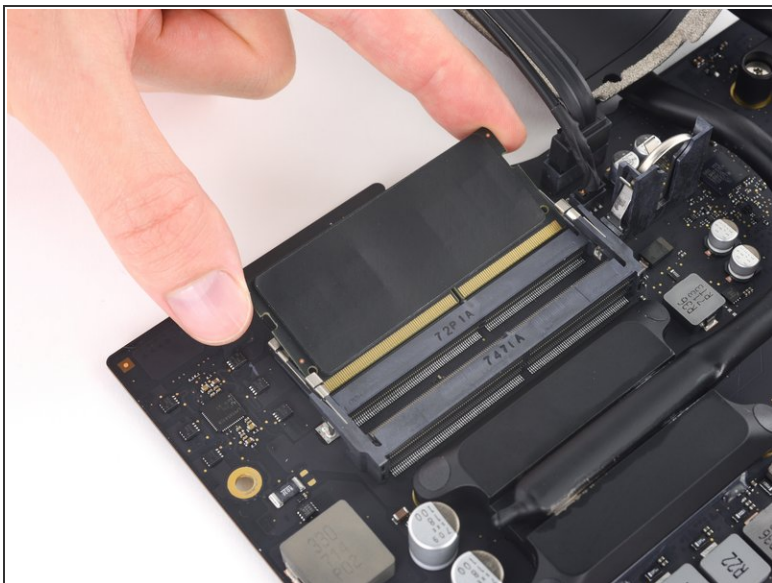
- Two clips secure the RAM module in place, one on each side. Using your fingers, spread the clips away from the RAM module.
 - ⓘ When released, the RAM module will pop up at a slight angle.

Step 63



- Lift the RAM module to an angle of about 30 degrees and slide it out.
- ⚠ When handling the RAM module, touch only the outside edges. Take care not to touch the gold-colored contact points along the bottom edge.
- 🔧 To install a new RAM module, slide it in place at about the same angle until it is snug, and then swing it downward until the two clips snap into place.

Step 64



- i** The original RAM module closer to the logic board has a thermal pad adhered to its top side (facing away from the logic board, between the two DIMMs).
- Peel off and transfer the thermal pad from the original RAM stick to your replacement RAM before you install it in the lower slot.

To reassemble your device, follow these instructions in reverse order.