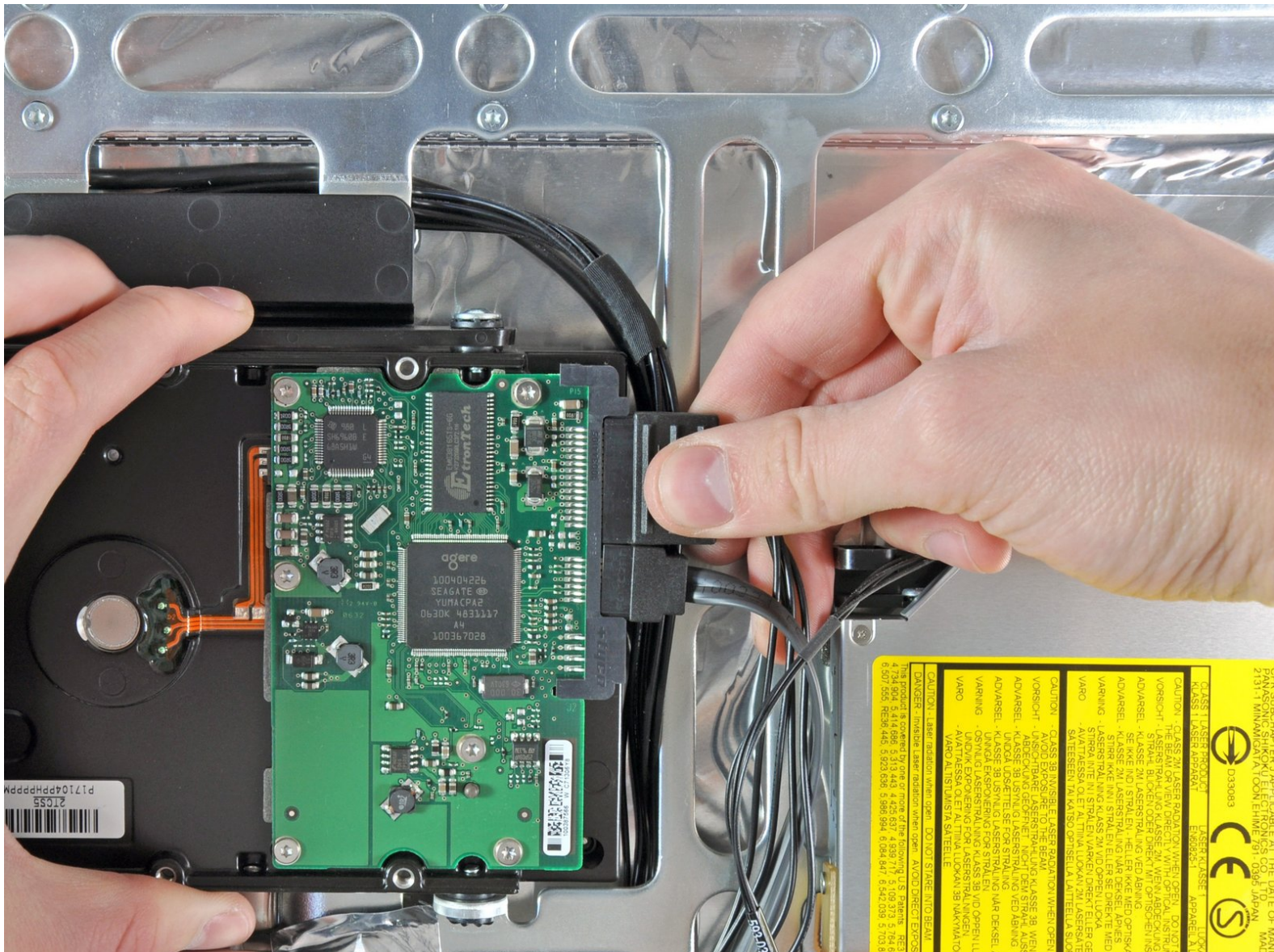




# iMac Intel 24" EMC 2111 Hard Drive Replacement

Internal Prerequisite.

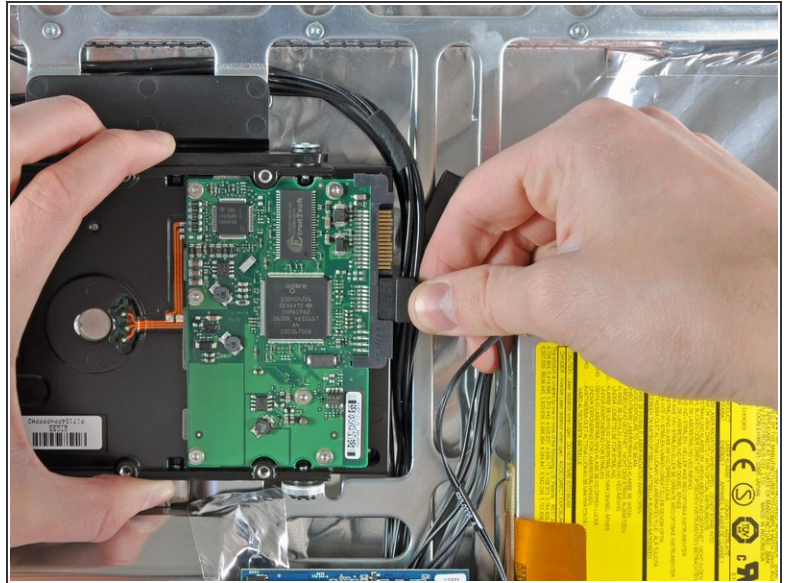
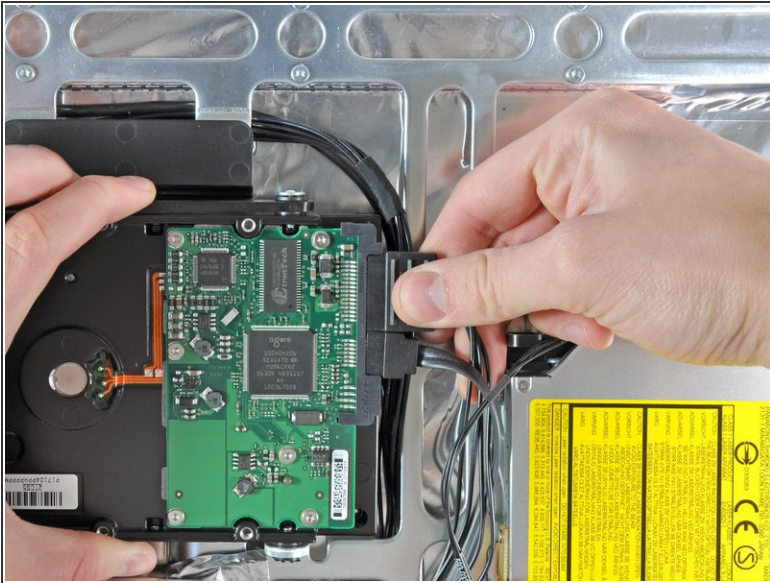
Written By: Andrew Bookholt



# INTRODUCTION

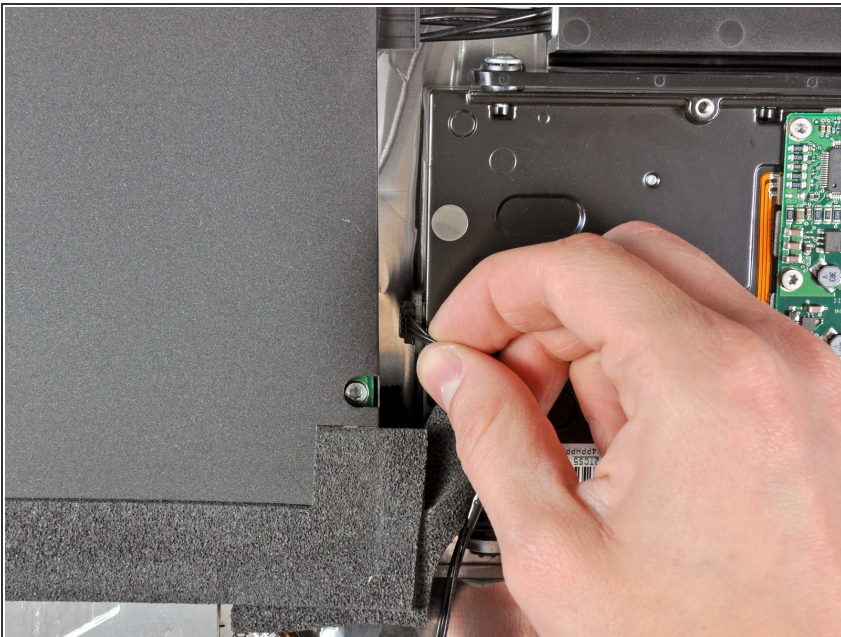
Internal Prerequisite.

## Step 1 — Hard Drive



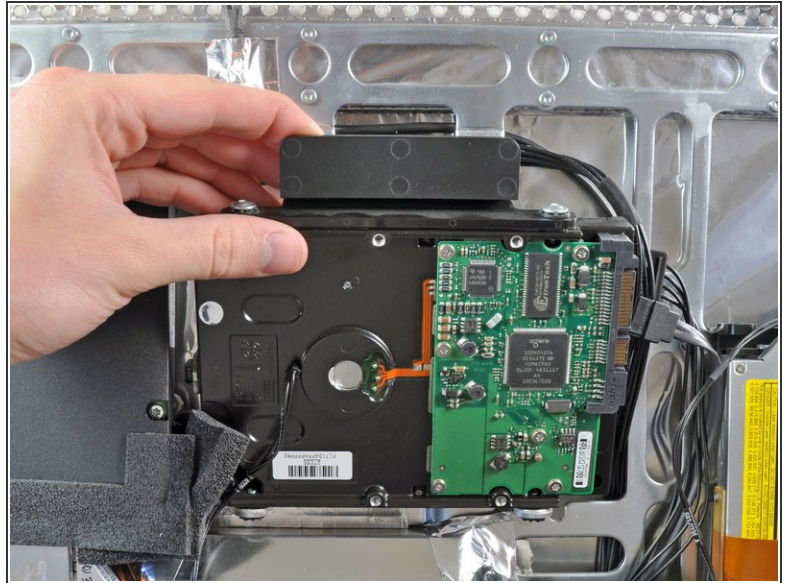
- Disconnect the SATA data and power cables by pulling their connectors away from the hard drive.

## Step 2



- Disconnect the hard drive thermal sensor cable from the thermal sensor attached to the side of the hard drive.

### Step 3



- Compress the plastic hard drive retainer by pushing it toward the bottom edge of the iMac.
- Pull the top edge of the hard drive slightly away from the rear case.

### Step 4



- Lift the hard drive off its bottom retaining posts and remove it from the iMac.

To reassemble your device, follow these instructions in reverse order.