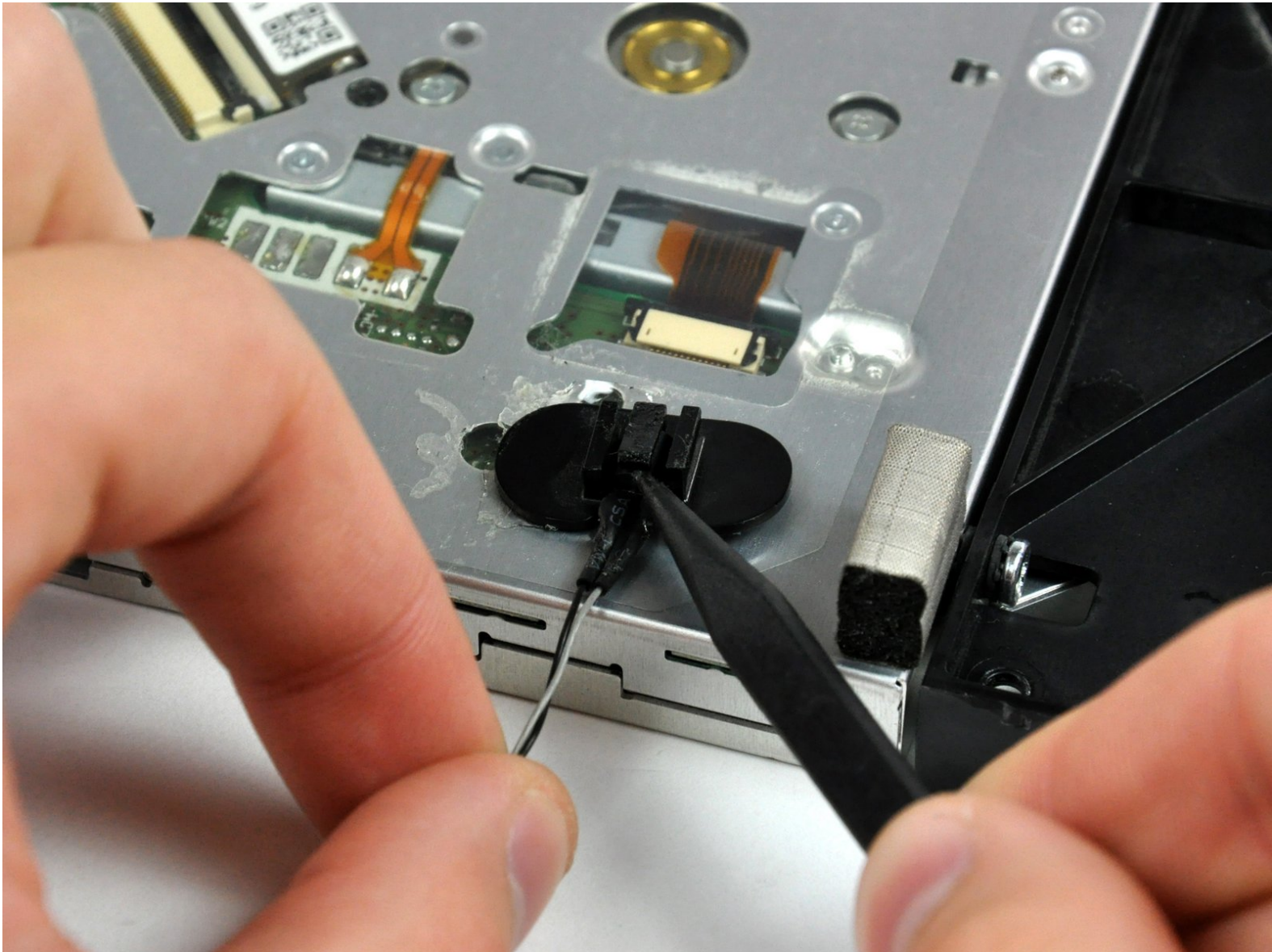




# iMac Intel 24" EMC 2134 and 2211 Optical Drive Replacement

Replace the optical drive in your iMac Intel 24" EMC 2134 or 2211.

Written By: Brittany McCrigler



---

# INTRODUCTION

Use this guide to replace the optical drive.

---

## TOOLS:

- [Heavy-Duty Suction Cups \(Pair\)](#) (1)
  - [Phillips #1 Screwdriver](#) (1)
  - [Spudger](#) (1)
  - [T10 Torx Screwdriver](#) (1)
  - [T6 Torx Screwdriver](#) (1)
  - [T8 Torx Screwdriver](#) (1)
-

## Step 1 — Access Door



- Loosen the single Phillips screw in the center of the access door.
- ⓘ This screw is captive in the access door.
- Remove the access door from your iMac.

## Step 2 — Glass Panel



- i** The glass panel is fixed onto the front bezel with fourteen magnets around its perimeter.

  - Stick two suction cups to opposing corners of the glass panel.
- i** To attach the [suction cups](#) we sell, first position the suction cup with the movable handle parallel to the face of the glass panel. While lightly holding the suction cup against the glass, raise the movable handle until it is parallel with the other handle.
- i** If your suction cups refuse to stick, try cleaning both the glass panel and the suction cup with a mild solvent such as Windex.



## Step 3



- Gently pull the glass panel straight up off the iMac.

- ⚠ The glass panel has several positioning pins around its perimeter. To avoid shearing these pins off the glass panel, be sure to only pull straight up during removal.
- ★ Be meticulous about cleaning the LCD and the inside face of the glass panel before reinstallation, as any fingerprints or dust trapped inside will be annoyingly visible when the display is on.


## Step 4 — Front Bezel




- Remove the following 12 screws securing the front bezel to the rear case:
  - Eight 13 mm T8 Torx screws
    - ⓘ Alternatively, you might have six 13 mm and two 25 mm T8 Torx screws
  - Four 25 mm T8 Torx screws
    - ⓘ Alternatively, you might have two 25 mm (outer) and two 35 mm (inner) T8 Torx screws

## Step 5



 The front bezel is still attached to the iMac by the microphone cable.

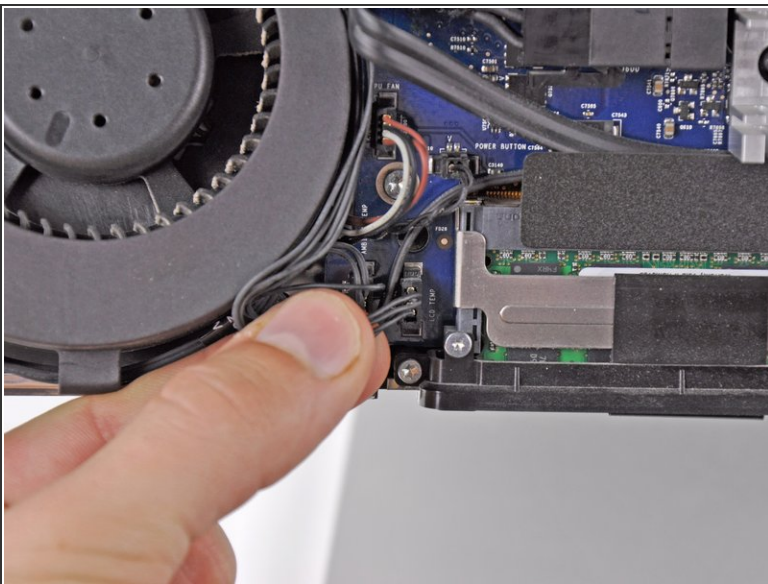
- Gently lift the front bezel from its top edge off the rear case. It helps to use your thumbs to push down very gently on the corners of the display.
  - Once the top edge of the front bezel has cleared the rear case, rotate the front bezel toward the stand and lift it off the rear case.
-  When reinstalling the front bezel, start at the lower edge and make sure it is flush with the rear case before lowering the top edge onto the iMac.

## Step 6



- Disconnect the microphone cable connector, removing tape as necessary.
- ★ For the front bezel to sit properly, be sure to tuck the microphone cable and connector into the void next to the camera board.

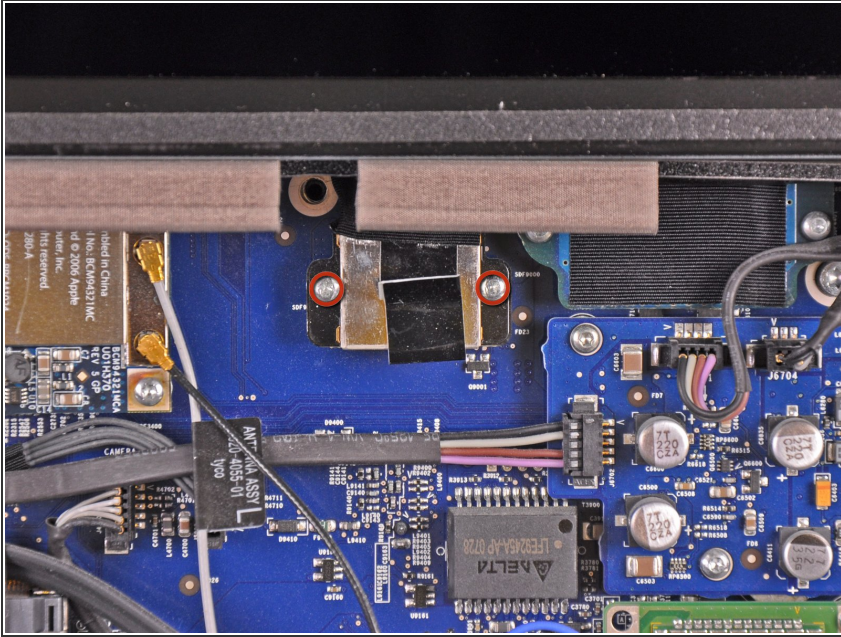
## Step 7 — Display Panel



- Disconnect the LCD temperature sensor by pulling the connector straight out of its socket on the logic board.
- i If necessary, de-route the LCD temperature sensor cable from behind the logic board.



## Step 8



- Remove the two 5.3 mm T6 Torx screws securing the display data cable to the logic board.



## Step 9



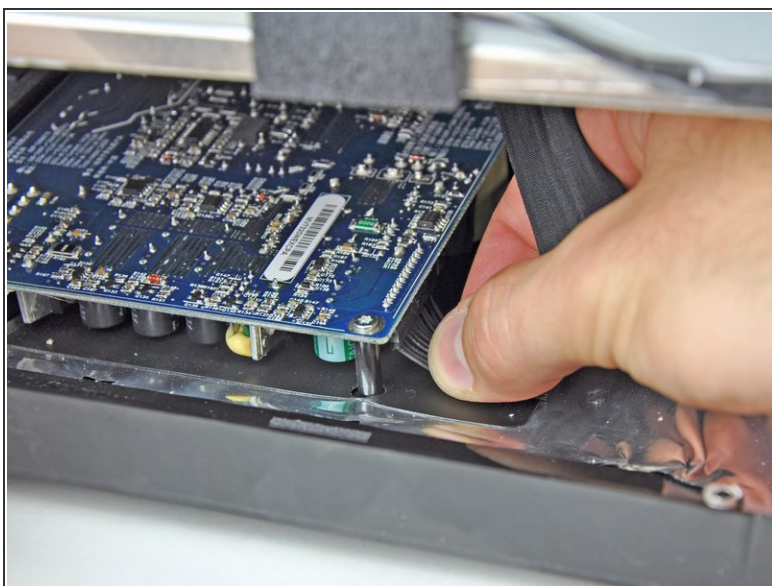
- Disconnect the display data cable connector from its socket on the logic board by pulling the attached plastic tab towards you and away from the iMac.

## Step 10



- ⚠ Lay the iMac down on a table before you remove the LCD so that it doesn't fall.
- Remove the eight 12 mm T8 Torx screws securing the display panel to the rear case.
- Lift the right side of the display panel a few inches up from the iMac.
- ⚠ Do not lift the LCD all the way up; there are still connectors attaching the LCD to the internals.

## Step 11



- With the LCD lifted, disconnect the LCD cable by pulling down.
- ⚠ The LCD cable is attached to the underside of the power supply; be careful where you put your fingers so you don't get zapped by a capacitor.
- ✦ On reassembly, you may find it helpful to remove the power supply, reconnect the LCD power cable, and then reinstall the power supply.
- Alternatively, the LCD power cable can be disconnected from the LCD, rather than the power supply.

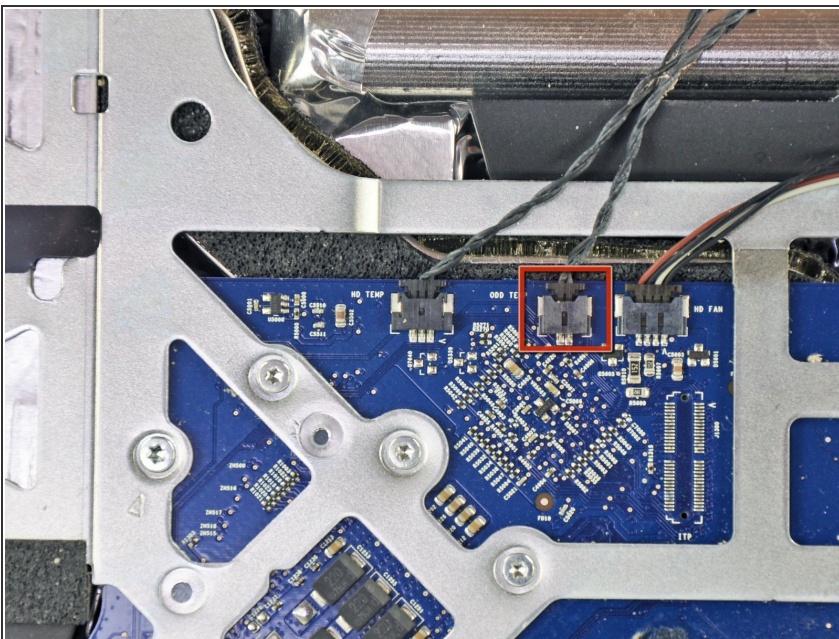


## Step 12



- Continue to lift the LCD from the right side.
- Remove the LCD.

## Step 13 — Optical Drive



- If necessary, remove the pieces of tape securing the hard drive/optical drive thermal sensor cables to your iMac.
- Disconnect the optical drive thermal sensor connector from the logic board by pulling its connector toward the top of your iMac.

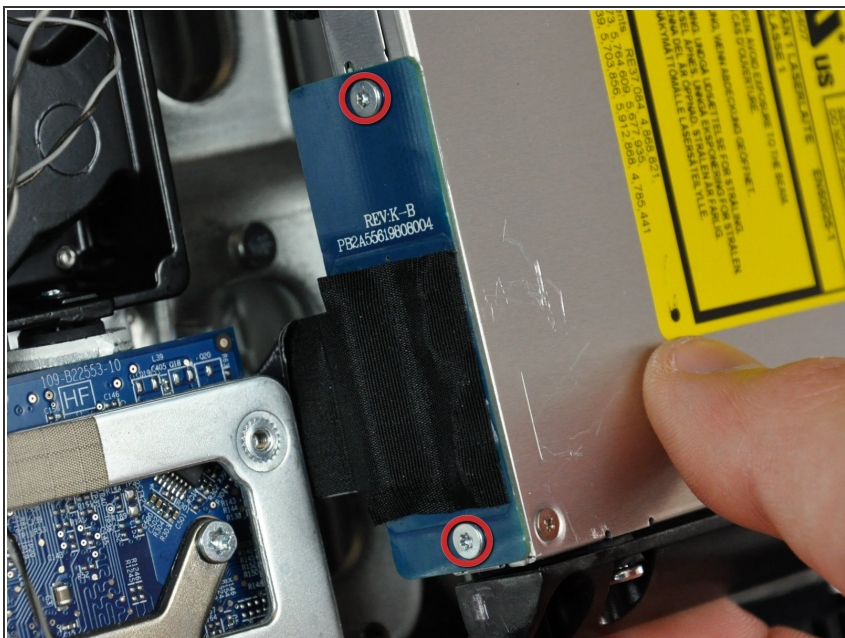


## Step 14



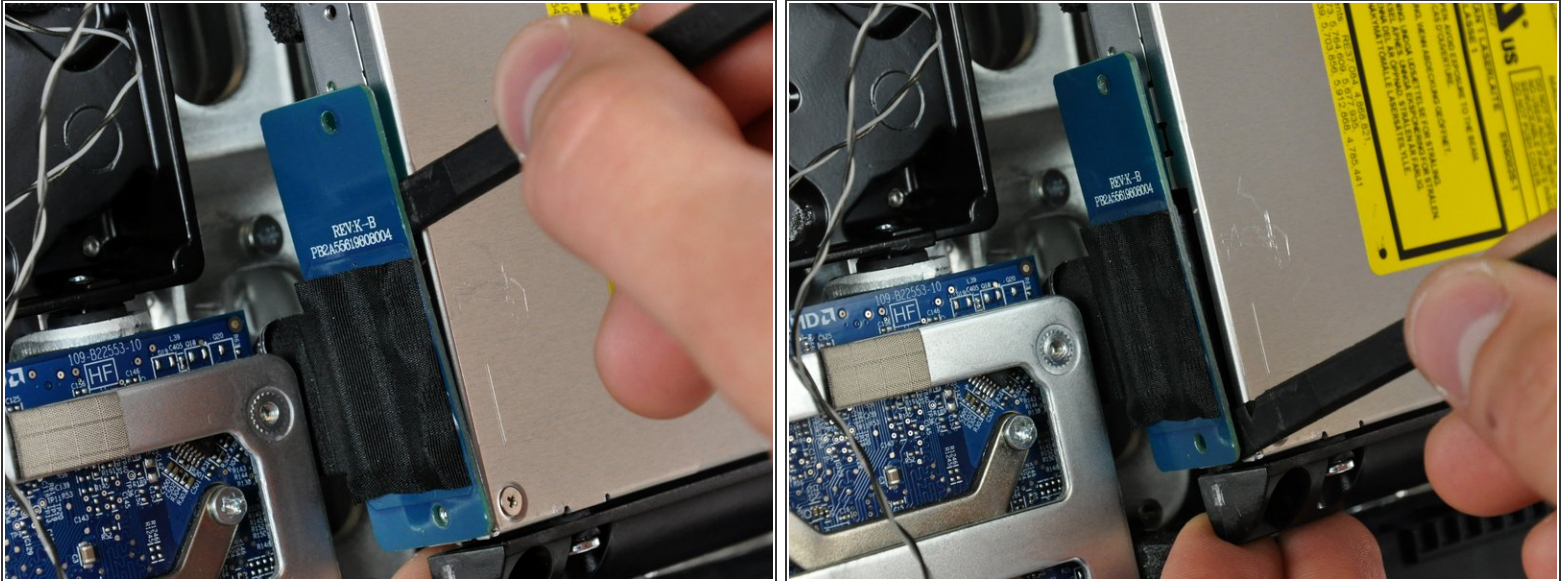
- Remove the two fine-thread 7 mm T10 Torx screws securing the optical drive to the rear case.

## Step 15



- Lift the free end of the optical drive slightly out of the rear case.
- Remove the two 3.5 mm T6 Torx screws securing the optical drive connector to the optical drive.

## Step 16



- Insert the flat end of a spudger between the optical drive connector and the body of the optical drive.
- Twist the spudger to separate the connector from the optical drive.
- ⓘ It may be necessary to work from alternating sides of the connector until it is disconnected.

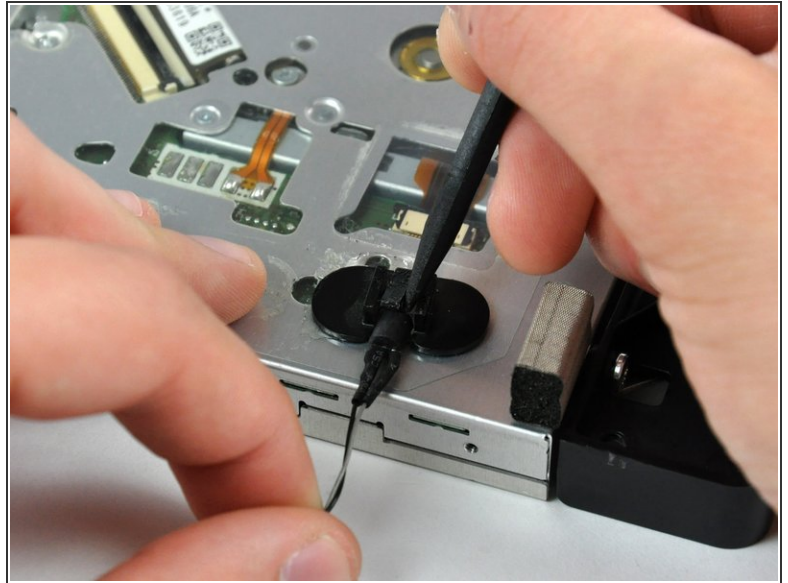
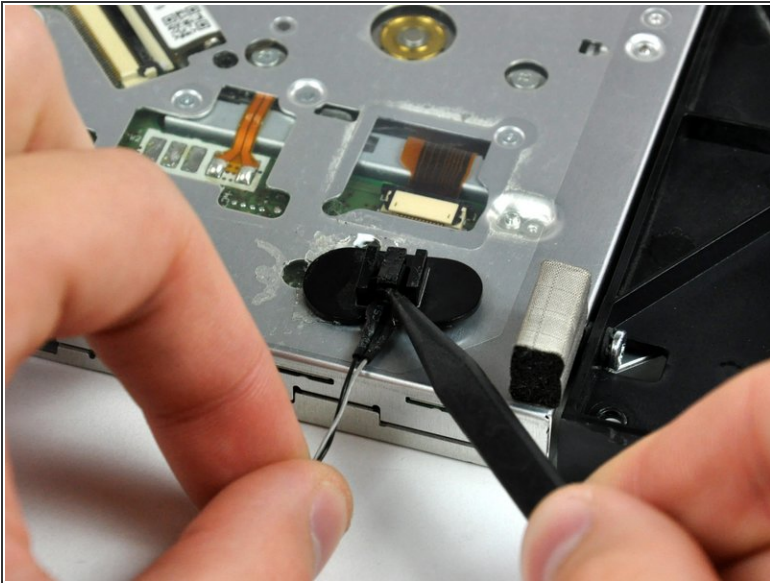
## Step 17



- Lift the optical drive out of the rear case and pull it away from the side of the rear case to release the strip of EMI tape attached to its surface.
- ⓘ The optical drive thermal sensor is still attached to the underside of the optical drive.



## Step 18 — Optical Drive



- If necessary, remove the piece of foam tape covering the optical drive thermal sensor.
- To remove the optical drive thermal sensor, use the tip of a spudger to lift the center finger of the thermal sensor bracket while applying slight tension to the thermal sensor cable.
- ⓘ If your thermal sensor is stuck to the optical drive, skip to the next step.

## Step 19



- Use the flat end of a spudger to pry the optical drive thermal sensor bracket up off the adhesive securing it to the optical drive.
- ⓘ If the adhesive gets dirty or will not stick to your new optical drive, place some double-sided tape under the two semicircular ears of the thermal sensor bracket.

## Step 20



- Use a spudger to remove the small piece of EMI foam from the bottom of the optical drive.
- ★ Don't forget to transfer this to your new optical drive.

## Step 21



- Remove the two 6.5 mm T10 Torx screws from both sides of the optical drive (four screws total).

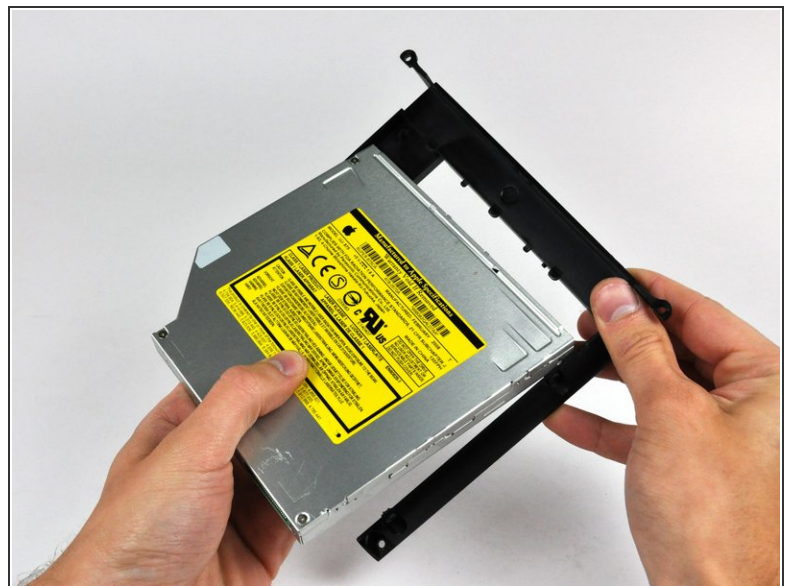


## Step 22



- Peel the strip of EMI tape off the optical drive.
- ☑ Don't forget to transfer this to your new optical drive.

## Step 23



- Slightly rotate the optical drive bracket away from the optical drive.
  - Pull the optical drive bracket away from the open end of the optical drive, minding any tabs that may get caught.
- ⓘ If you have a disk or anything else stuck inside your optical drive, we have a [guide](#) to fix it.

To reassemble your device, follow these instructions in reverse order.