



iMac Intel 24" EMC 2267 CPU Replacement

iMac Intel 24" EMC 2267 CPU replacement

Written By: Bastien Arata



INTRODUCTION

iMac Intel 24" EMC 2267 CPU replacement

TOOLS:

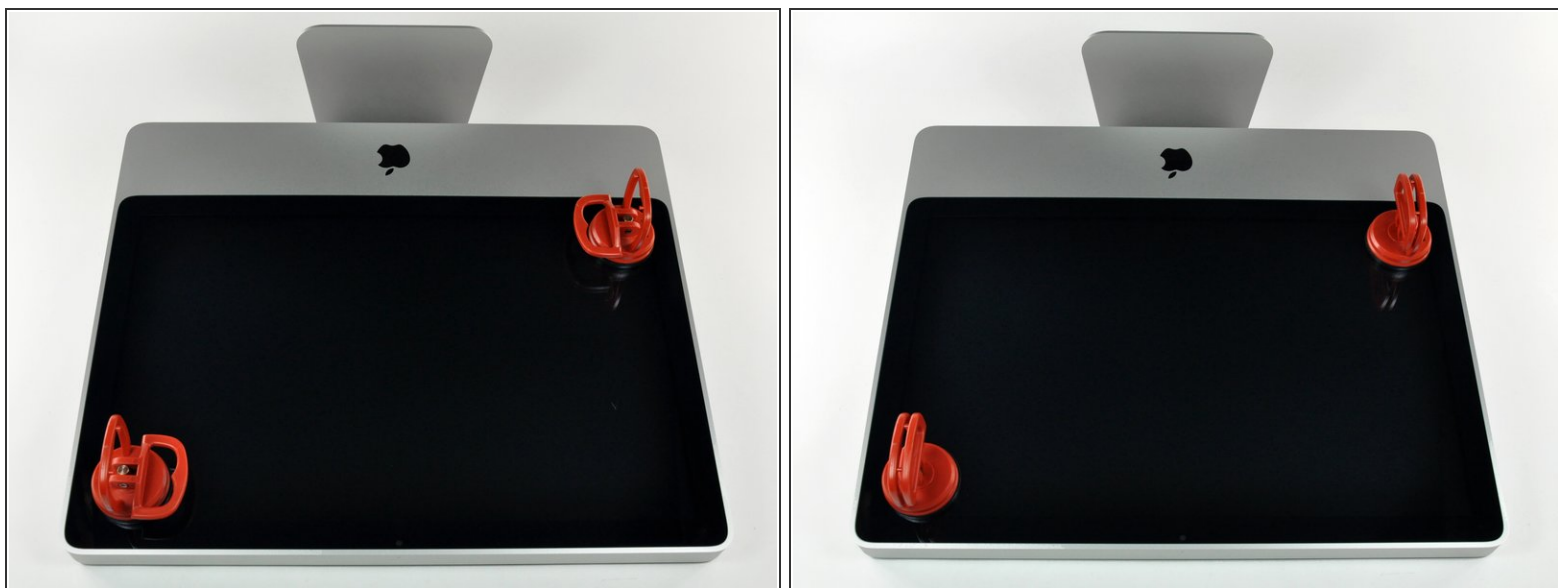
- [Phillips #0 Screwdriver](#) (1)
 - [T8 Torx Screwdriver](#) (1)
 - [Flathead Screwdriver](#) (1)
 - [Heavy-Duty Suction Cups \(Pair\)](#) (1)
 - [T10 Torx Screwdriver](#) (1)
 - [T6 Torx Screwdriver](#) (1)
 - [Spudger](#) (1)
 - [Phillips #1 Screwdriver](#) (1)
 - [Phillips #2 Screwdriver](#) (1)
-

Step 1 — Access Door



- Lay your iMac front side down on a table with the lower edge facing yourself.
- Loosen the single Phillips screw in the center of the access door.
- ⓘ This screw is captive in the access door.
- Remove the access door from your iMac.

Step 2 — Glass Panel



- i** The glass panel is fixed onto the front bezel with fourteen magnets around its perimeter.

 - Stick two suction cups to opposing corners of the glass panel.
- i** To attach the [suction cups](#) we sell, first position the suction cup with the movable handle parallel to the face of the glass panel. While lightly holding the suction cup against the glass, raise the movable handle until it is parallel with the other handle.
- i** If your suction cups refuse to stick, try cleaning both the glass panel and the suction cup with a mild solvent.

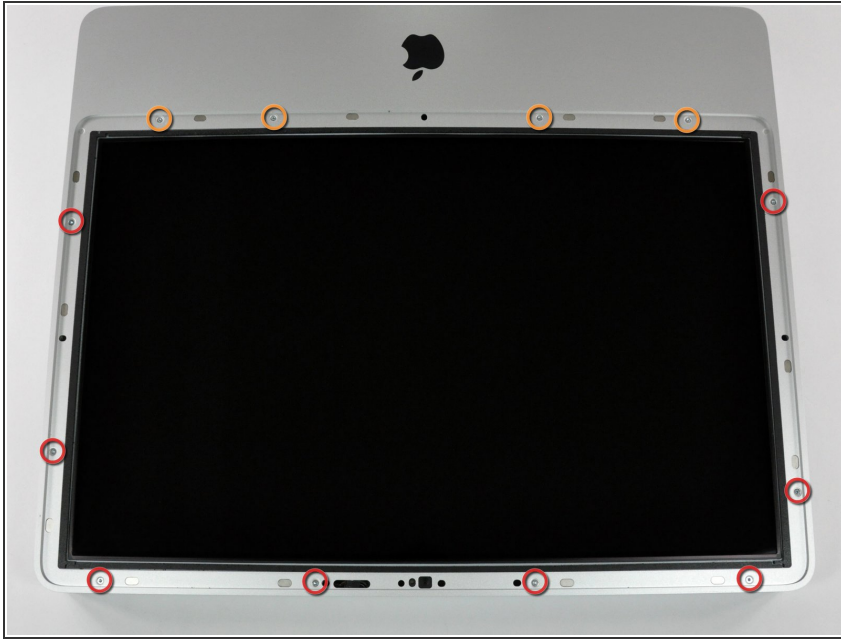
Step 3



- Gently pull the glass panel straight up off the iMac.

- ⚠ The glass panel has several positioning pins around its perimeter. To avoid shearing these pins off the glass panel, be sure to only pull straight up during removal.
- ★ Be meticulous about cleaning the LCD and the inside face of the glass panel before reinstallation, as any fingerprints or dust trapped inside will be annoyingly visible when the display is on.
- ★ When replacing the glass, be sure there's nothing between the glass and the frame. Stray cables could be damaged or crack the glass.


Step 4 — Front Bezel




- Remove the following 12 screws securing the front bezel to the rear case:
 - Eight 13 mm T8 Torx.
 - Four 25 mm T8 Torx.
- ⓘ On the 24" iMac Intel Model A1225, the bottom center two screws are long (26mm), four on sides (two left, two right) are medium (18mm), and the remaining 6 (four top, two bottom corners) are short (14mm).

Step 5



 The front bezel is still attached to the iMac by the microphone cable.

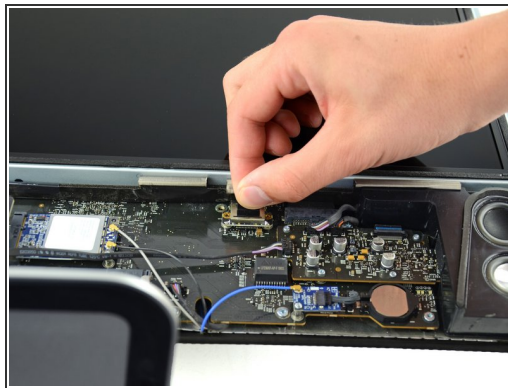
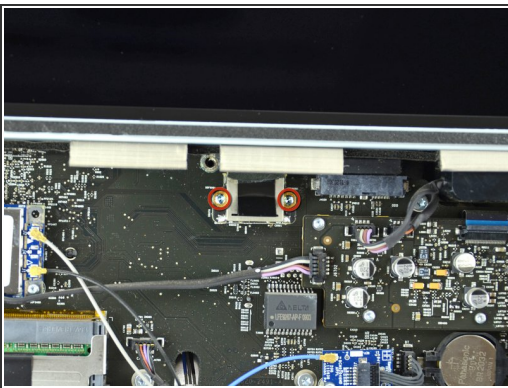
- Gently lift the front bezel from its top edge off the rear case.
 - Once the top edge of the front bezel has cleared the rear case, rotate the front bezel toward the stand and lift it off the rear case.
 - Rotate the front bezel away from the rest of the device and lay it above the top edge of the iMac.
-  When reinstalling the front bezel, start at the lower edge and make sure it is flush with the rear case before lowering the top edge onto the iMac.

Step 6



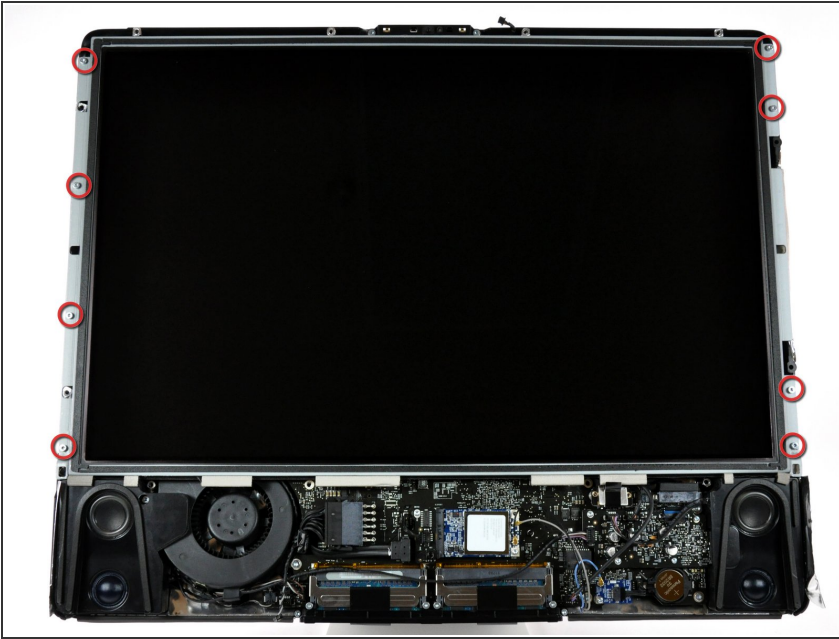
- Disconnect the microphone cable connector, removing tape as necessary.
- ★ For the front bezel to sit properly, be sure to tuck the microphone cable and connector into the void next to the camera board.

Step 7 — Display Panel



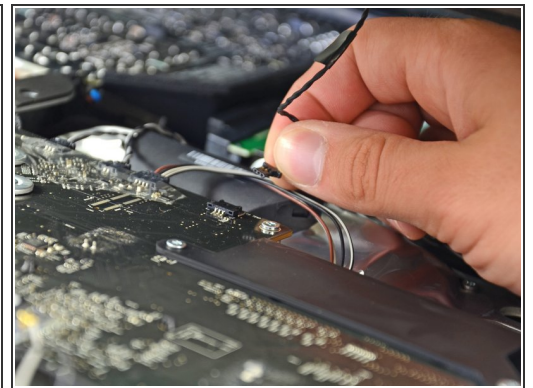
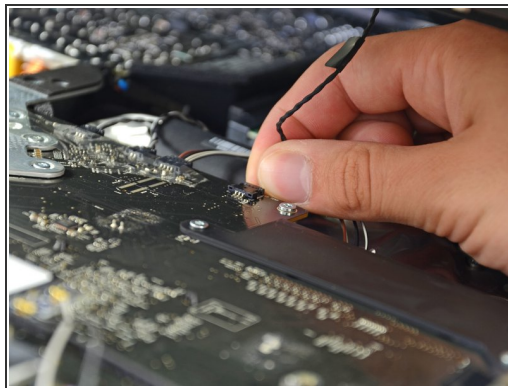
- Remove the two 5.3 mm T6 torx screws from the LCD connector.
- Firmly grasp the pull tab on top of the connector and pull it straight up out of its port.
- ⚠ Make sure that you are pulling the tab and not the connector cable.

Step 8



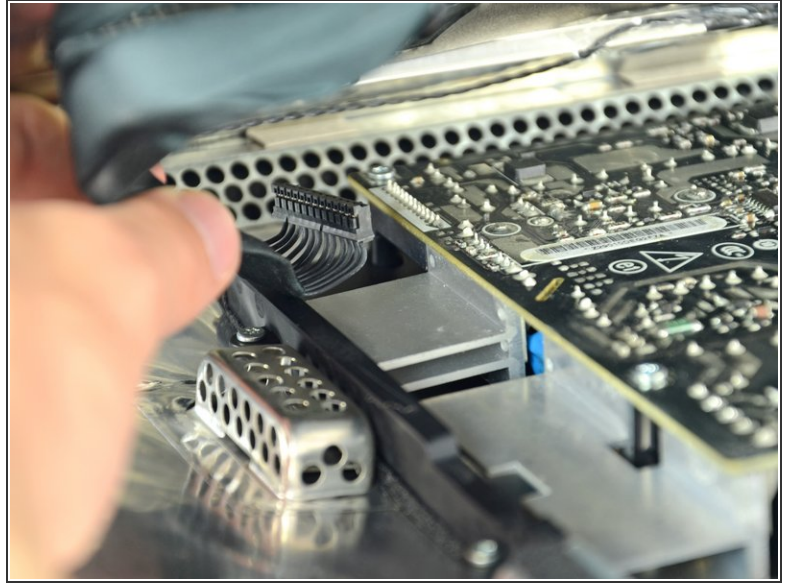
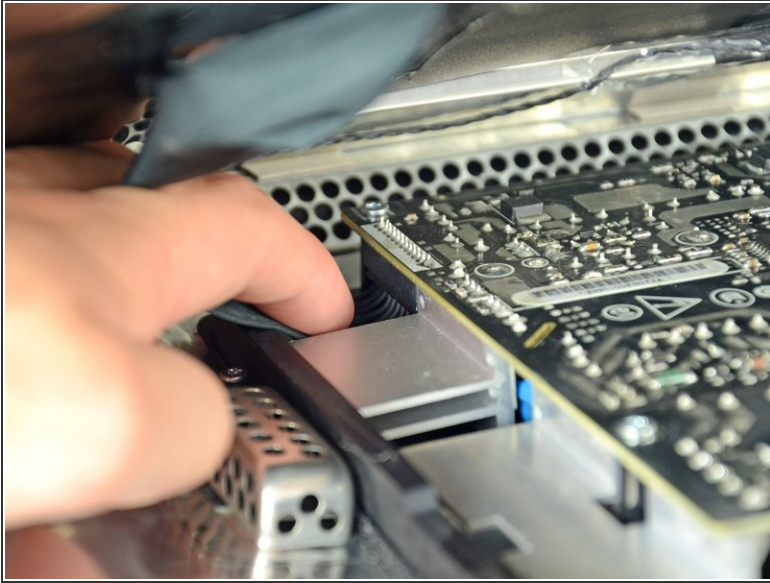
- Remove the eight T8 Torx screws securing the display panel to the rear case.
- ⓘ The iMac shown is a 20" model, but the screw locations should be approximately correct.

Step 9



- Place your hands on either side of the bottom of the display panel, and lift it up enough that you can reach the connectors inside.
- ⚠ Do not try to remove the display panel completely as it is still connected to the rest of the device.
- While holding the display panel up with one hand, locate and remove the display thermal sensor cable from its connector.

Step 10



- While still holding the display panel up, use two fingers to firmly push down on the power supply cable connector from its socket.

⚠ Be very careful not to touch the exposed face of the power supply to avoid electric shock from the many large capacitors attached to the other side of the board.

Step 11



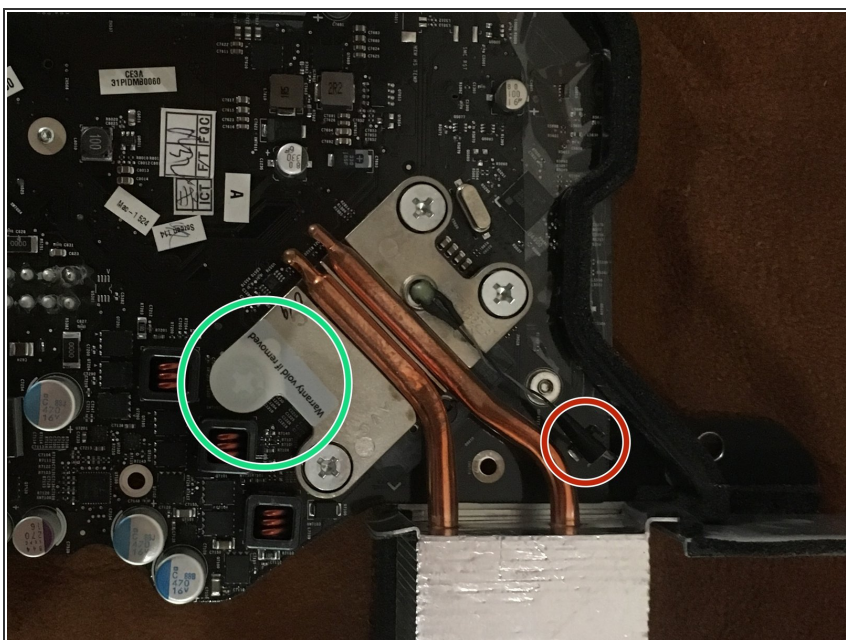
- Lift and remove the display panel from the device.

Step 12 — Logic board teardown



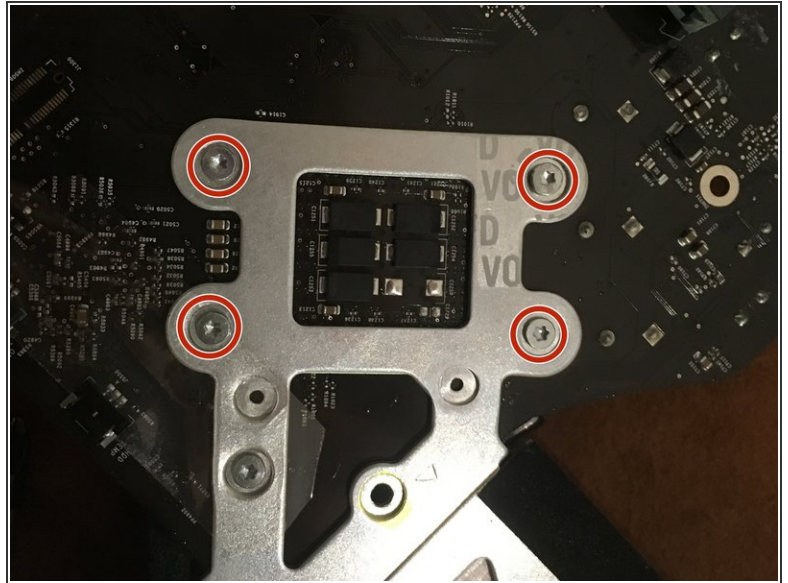
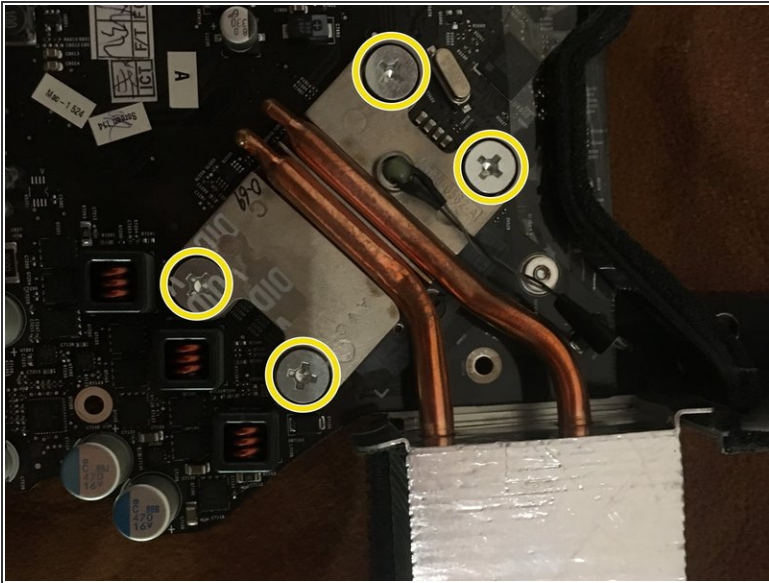
- Start by following the excellent [guide](#) from [Jeff Dickson](#) from step 2 to step 9

Step 13 — Unplug temperature sensor



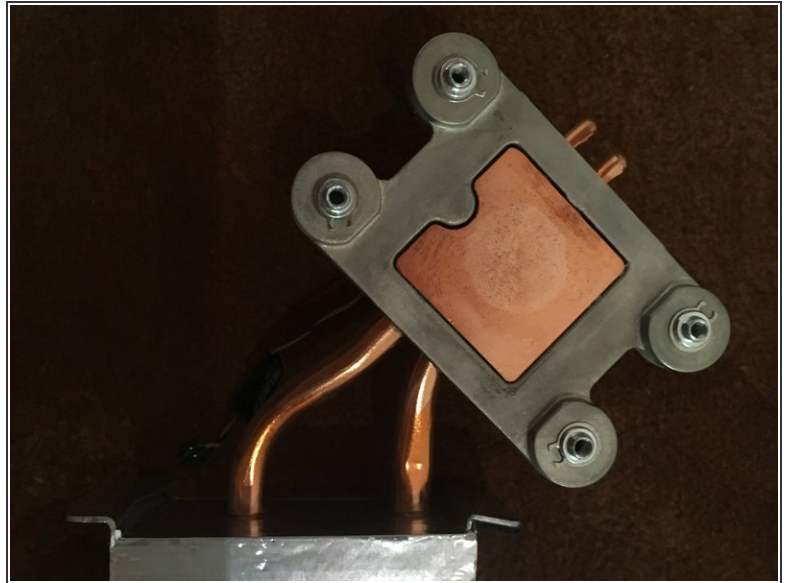
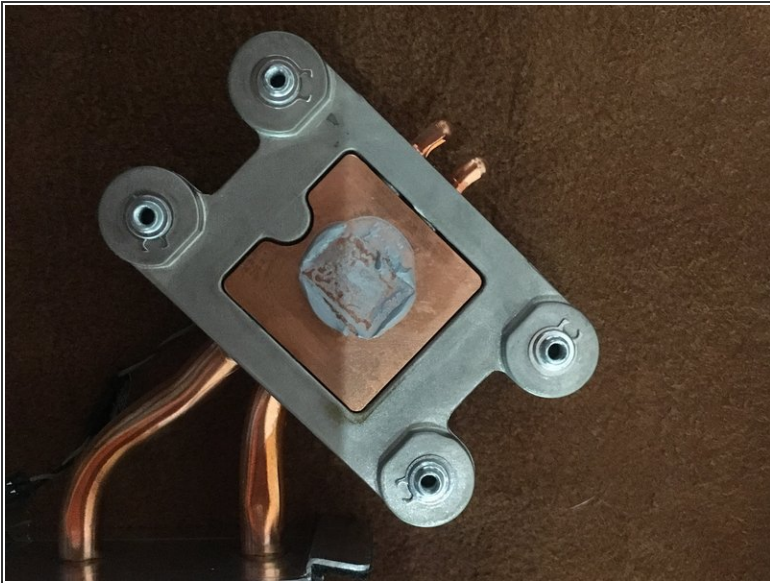
- Remove the warranty stickers
- Unplug the CPU temp sensor

Step 14 — Heat sink disassembly



- Remove the 4 Philips 02 screws
- Flip over the logic board
- Unscrew this 4 torx 8 screw. You may need to lock the Philips 02.

Step 15 — Heat sink cleanup



- Wipe the thermal paste with with a microfibre cloth wetted with an alcoholic solution.

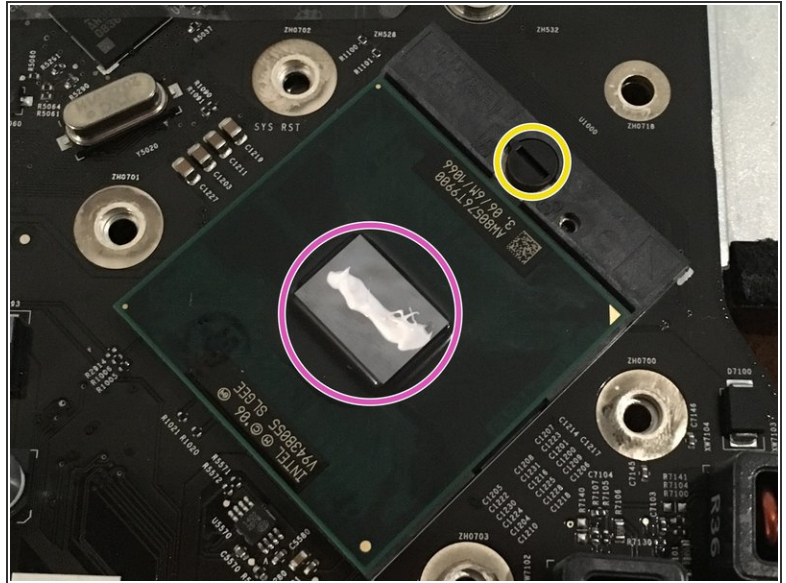
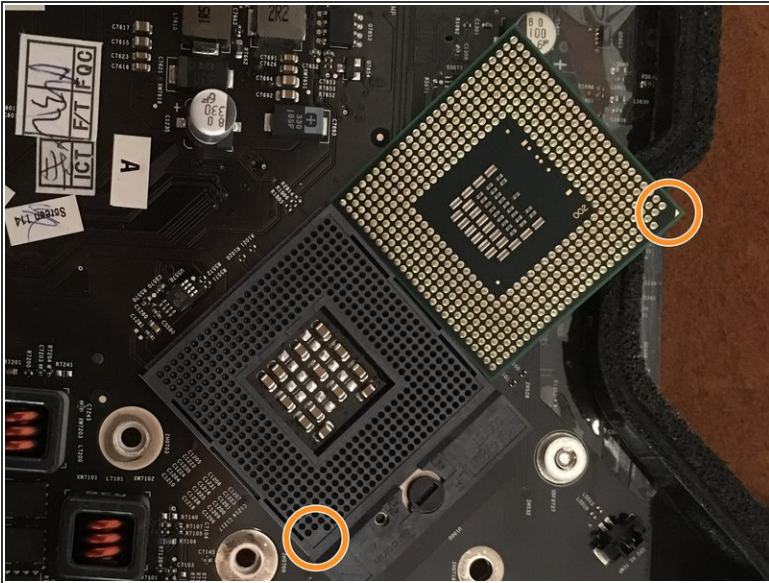
⚠ Keep away from any electronic parts during the cleanup step

Step 16 — CPU disassembly



- Rotate the locking screw by half a turn (counterclockwise).
- ⓘ The locking mount should slightly move backward.
- Gently remove the old CPU lifting it up vertically.

Step 17 — New CPU installation



- Align the socket and the new CPU with the help of the trimmed corner
- Gently drop the CPU in its socket
- ⚠ Don't use any force here, it should fit easily in its socket
- Lock the CPU by rotating the locking screw half a turn clockwise.
- Drop a little bit of thermal paste on the center of the CPU
- ⓘ When reassembling the heat sink, gently squeeze it to spread the thermal paste

To reassemble your device, follow the instructions in reverse order.