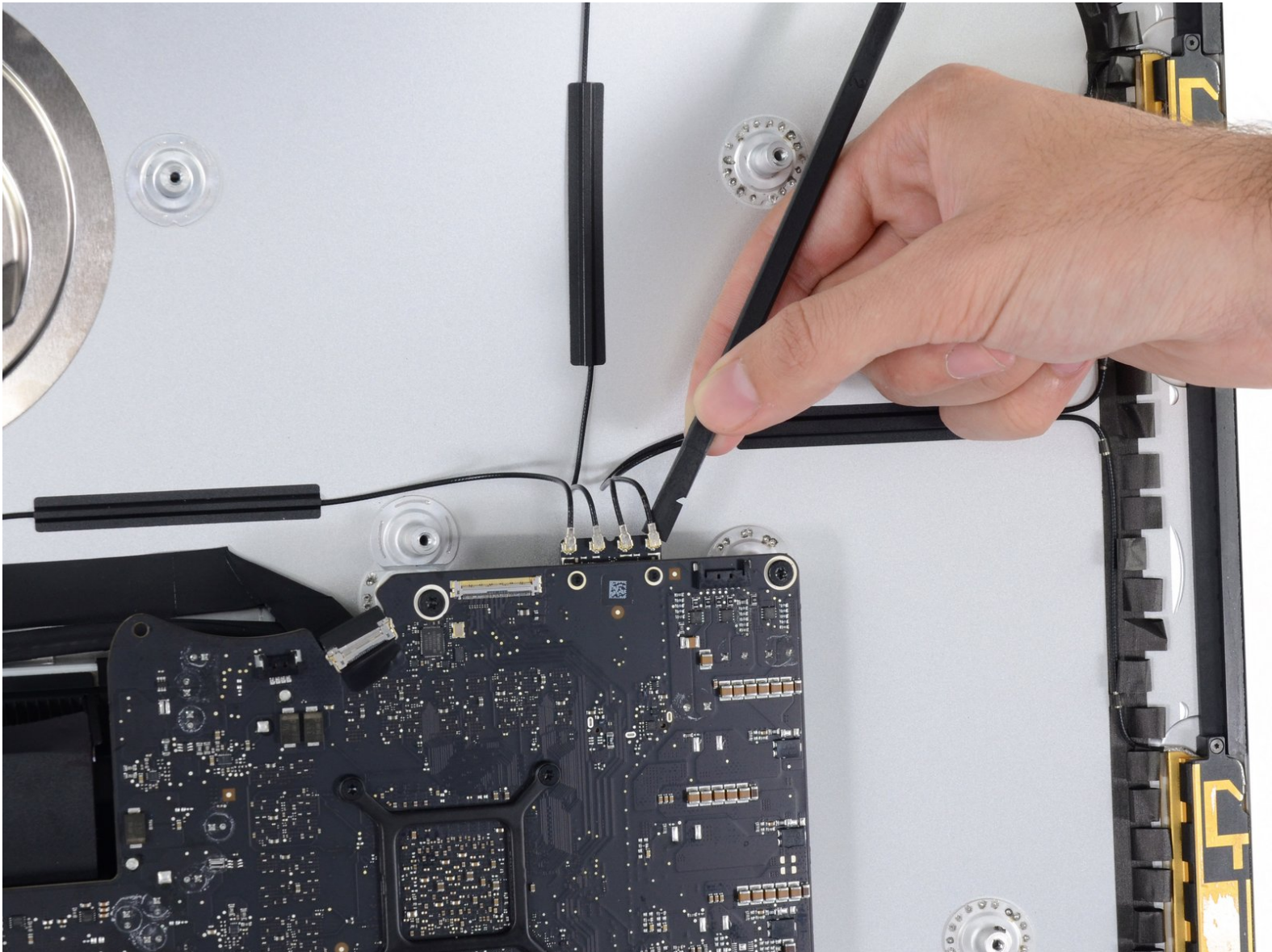




iMac Intel 27" EMC 2546 Logic Board Assembly Replacement

Prerequisite guide for SSD, Heat Sink, SATA Cable.

Written By: Andrew Optimus Goldheart

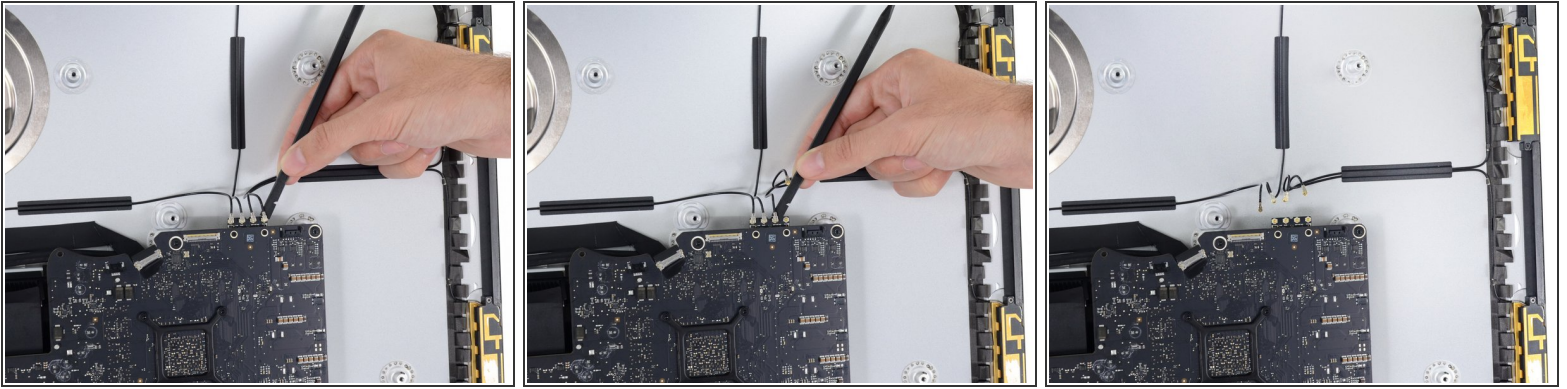




TOOLS:

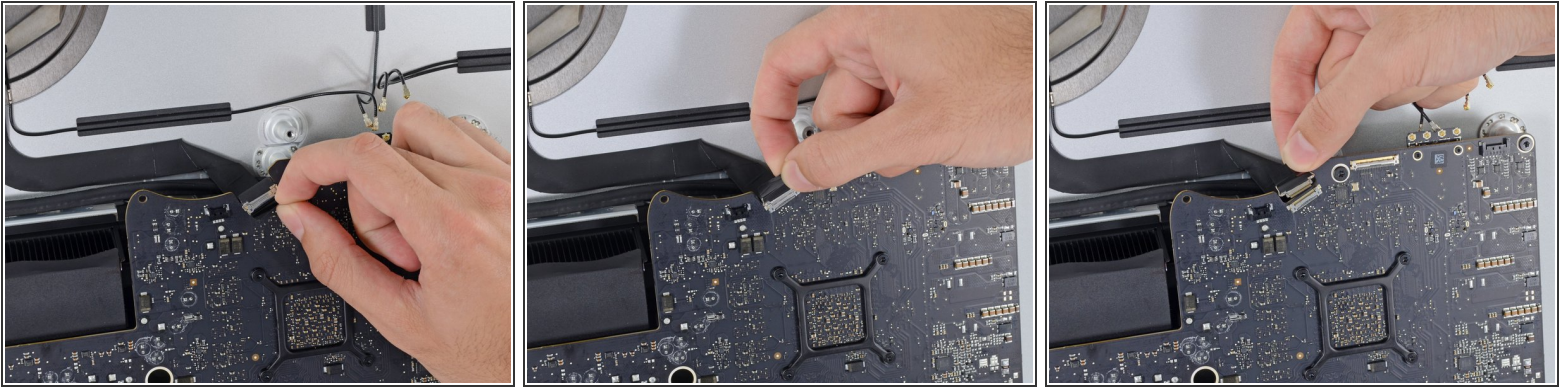
- [Spudger](#) (1)
- [T10 Torx Screwdriver](#) (1)
- [T25 Torx Screwdriver](#) (1)

Step 1 — Logic Board Assembly



- Use the flat end of a spudger to disconnect each of the four antenna connectors from the AirPort/Bluetooth card.
- ☑ Note the original positions for each connector when reconnecting the cables. From left to right on the card, the antennas are connected in the following order:
 - Leftmost
 - Top
 - Upper right
 - Lower right

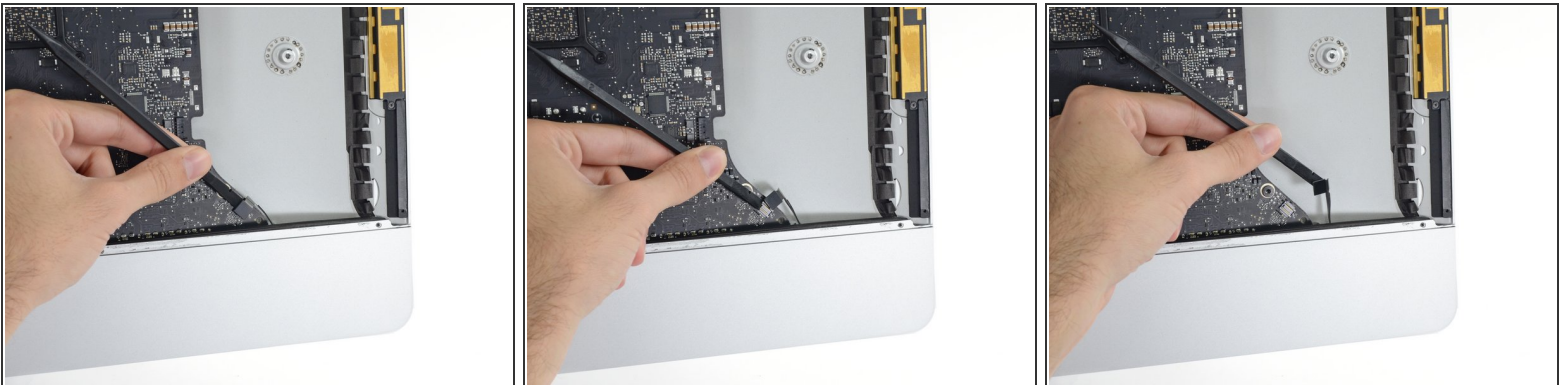
Step 2



 This is a delicate connection that can be easily broken.

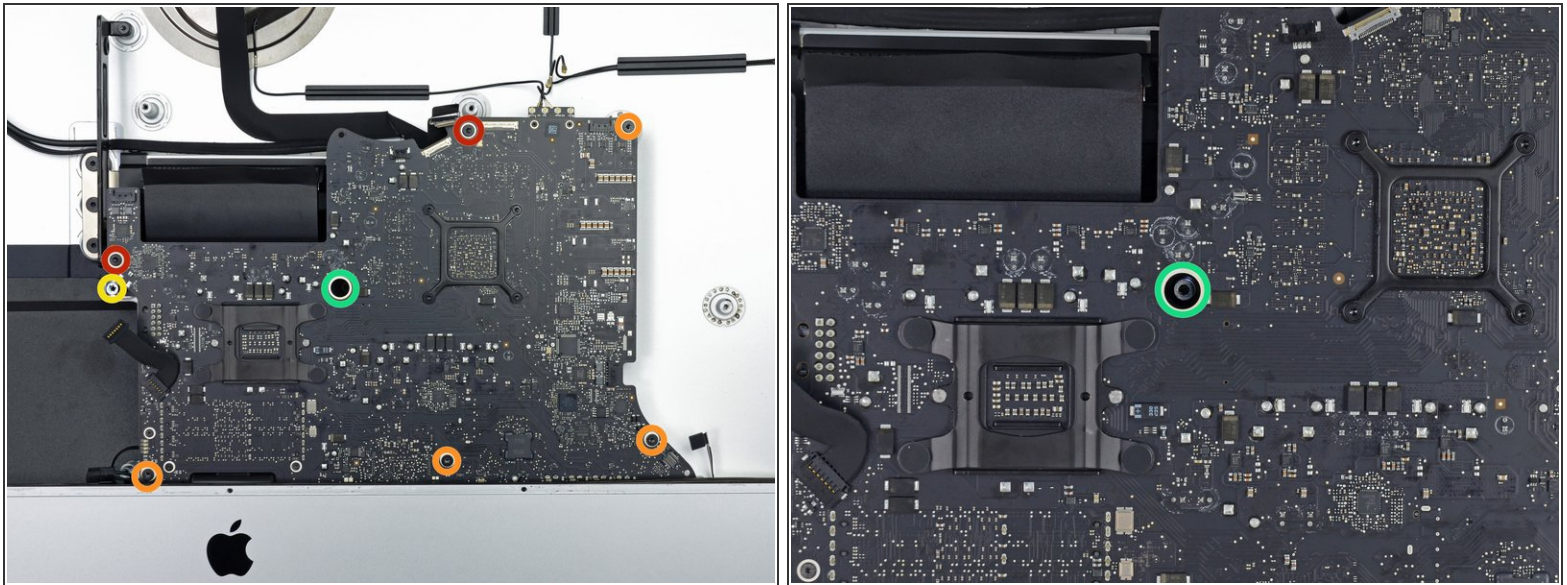
- Flip up the metal retaining bracket on the iSight camera cable.
- Pull the camera cable connector straight out of its socket, toward the top of the iMac.

Step 3



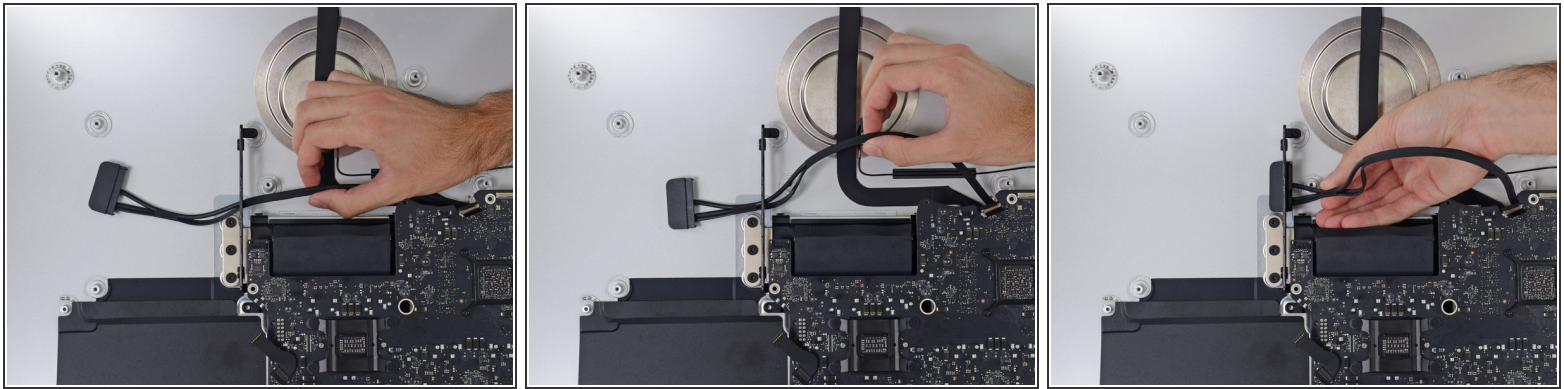
- Use the flat end of a spudger to disconnect the headphone jack cable connector from its socket on the logic board.
- Gently push the cable out of the way.

Step 4



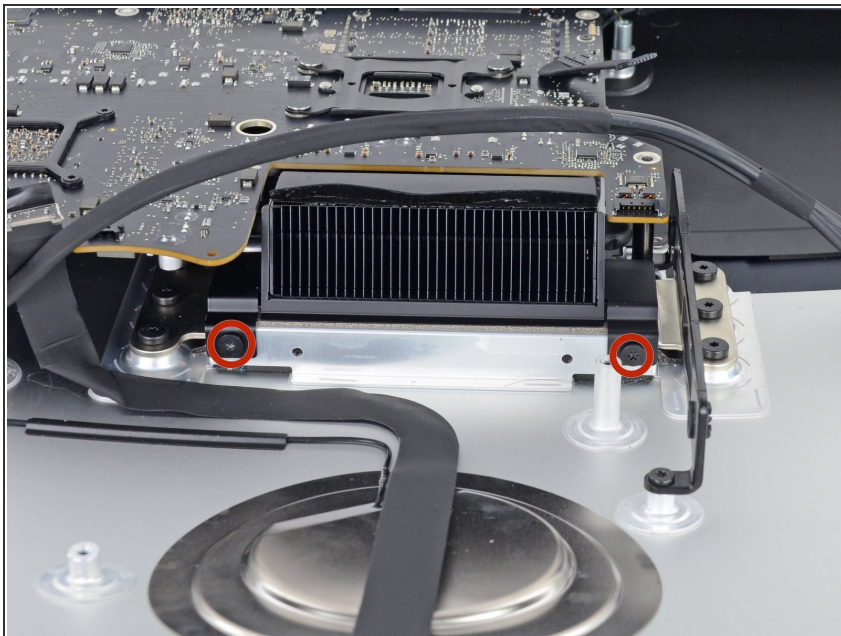
- Remove the following screws from the front of the logic board:
 - Two 23.7 mm T10 screws
 - Four 7.4 mm T10 screws
 - One 20.8 mm T25 spacer screw
 - One captive T10 screw
- ⓘ This screw is beneath a hole in the logic board. You'll need a fixed screwdriver or the 60 mm extension from an iFixit driver kit to reach it.

Step 5



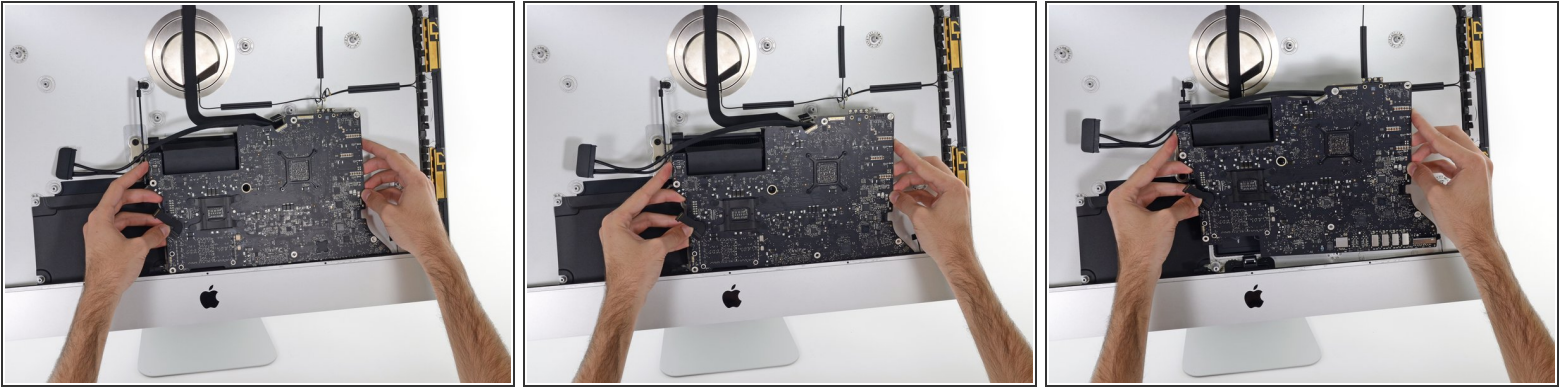
- i The hard drive SATA cable can't be removed just yet, but will get in the way of removing the logic board.
- Pull the cable and connector through the right hard drive bracket. Move the cable to the right side of the iMac, out of the way of the exhaust port.

Step 6



- Remove two 5.7 mm T10 screws from the top of the heat sink exhaust duct.

Step 7



- Tilt the logic board slightly forward.
- Lift the logic board straight up and out of the iMac. Be careful not to snag on any of the screw posts attached to the inside of the rear case.

Step 8



- When reassembling your iMac, be very careful to align the exterior I/O ports correctly. The logic board can sit crooked even when secured with all its screws.
- You can use a USB flashdrive or ethernet cable to ensure the logic board is seated correctly while you screw it in.

To reassemble your device, follow these instructions in reverse order.