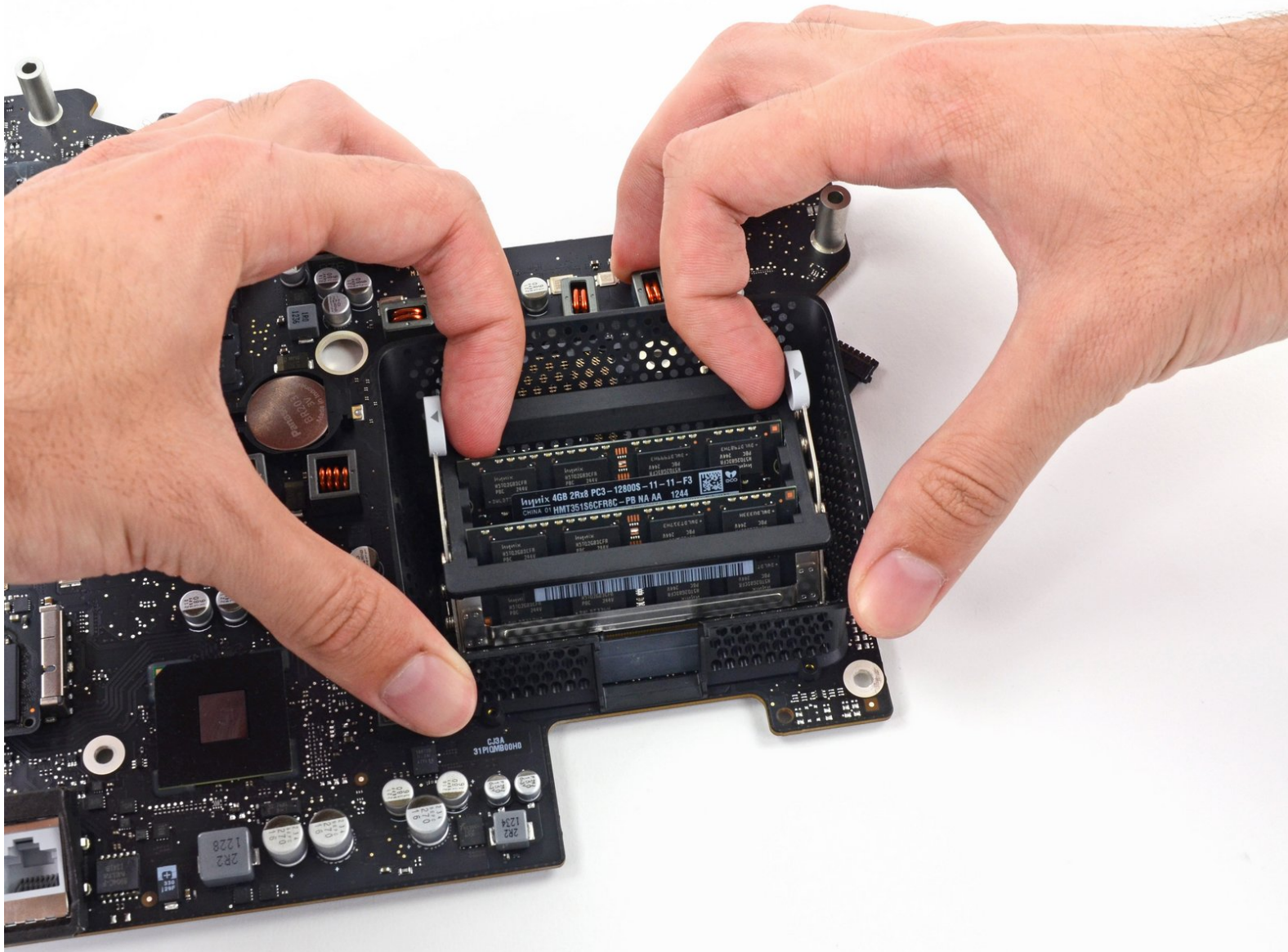




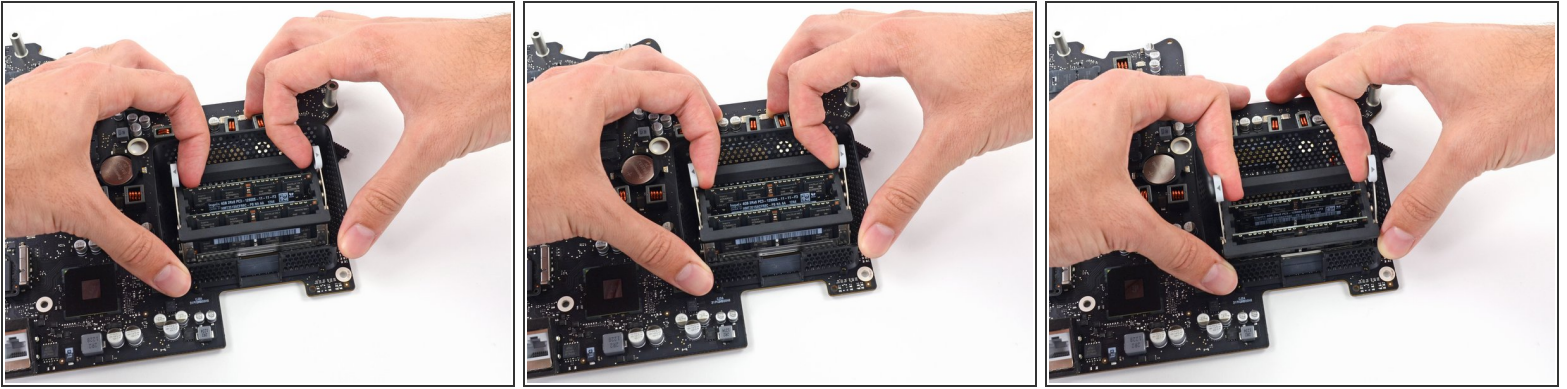
# iMac Intel 27" EMC 2546 RAM Replacement


prerequisite for logic board—before SSD, after SATA cable and heat sink

Written By: Andrew Optimus Goldheart



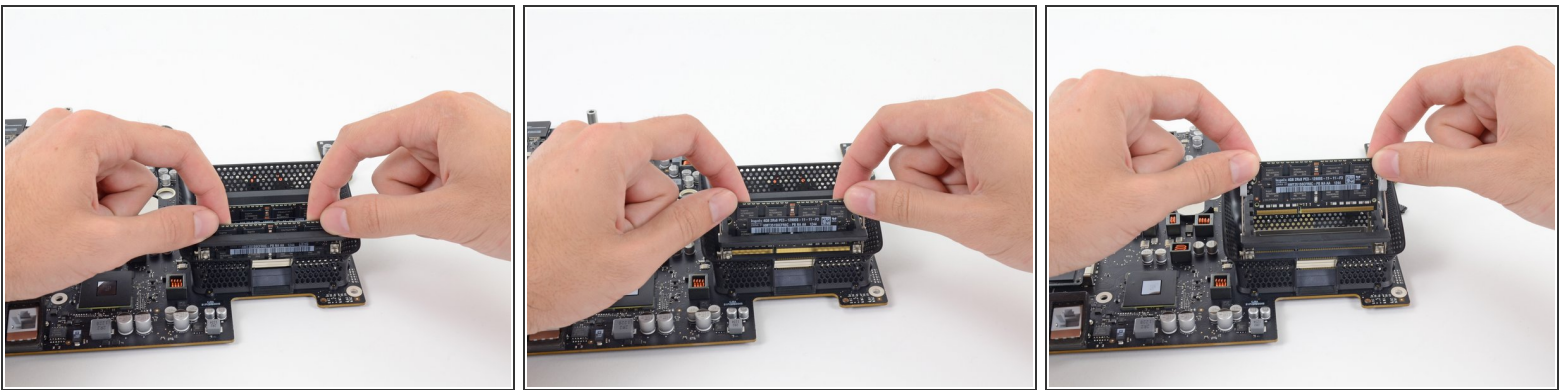
## Step 1 — RAM




 The RAM tray is locked into its closed position with two grey tabs.

- Use your thumbs or index fingers to unlock the tray by pushing the tabs outward, away from the RAM.
- Pull the tabs out and up, swinging the RAM tray up to a near-vertical position.

## Step 2



- Remove a stick of RAM by grabbing it with two hands and pulling straight out of the RAM tray.
- Remove any remaining sticks of RAM.

 RAM modules are keyed, so that they can only be installed in the proper orientation. Ensure that the RAM module's notch lines up with the socket's notch when installing new modules.

To reassemble your device, follow these instructions in reverse order.

