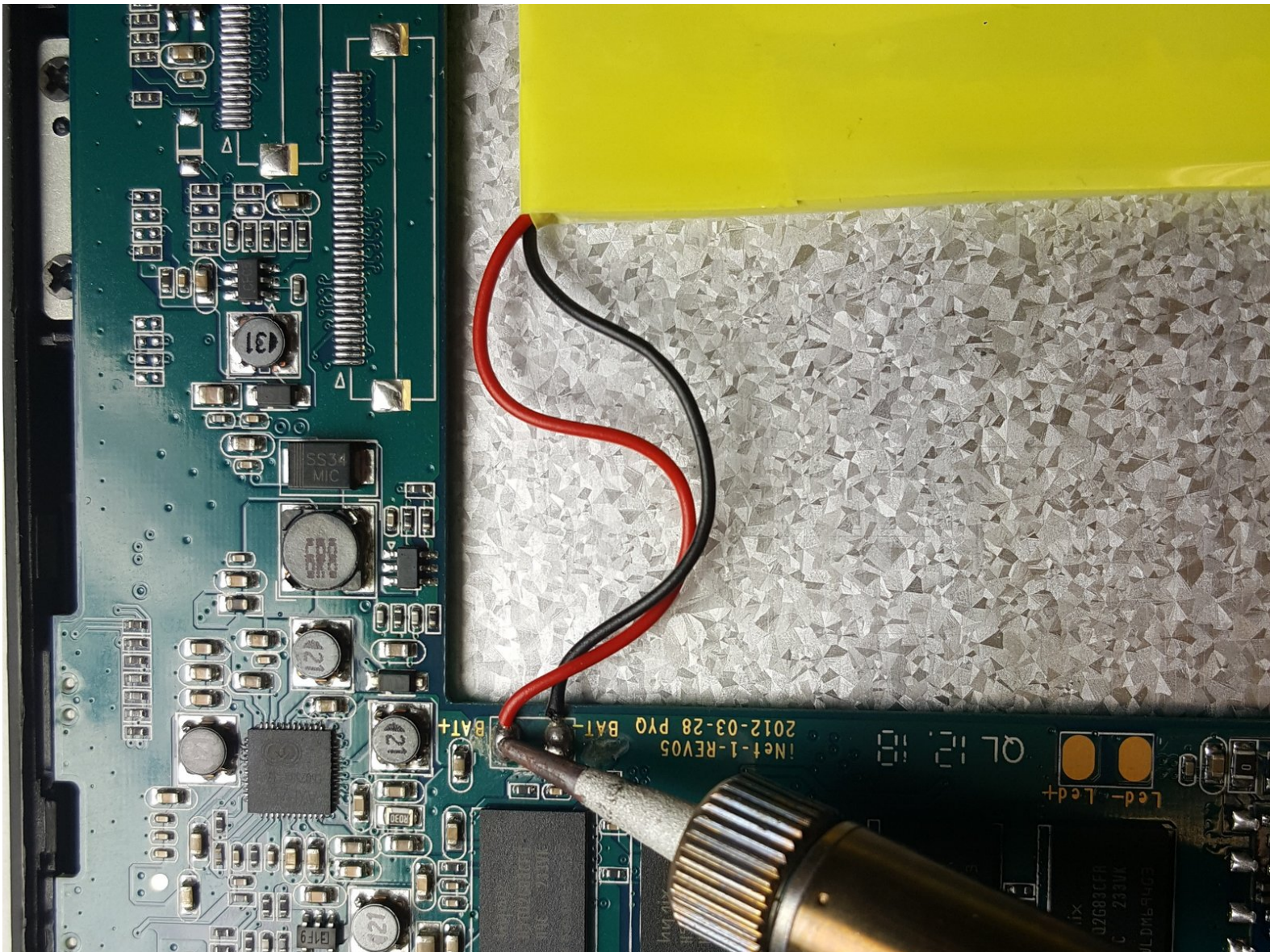




iNet M1001 Battery Replacement

This guide will show users how to replace the battery of iNet M1001 tablet.

Written By: Abduleeteef Abola



INTRODUCTION

This guide shows detailed steps on how to replace the battery of the iNet M1001 tablet. This guide is for you if the battery of your iNet M1001 tablet has gone bad and now needs replacement. One should take care not to break open the battery or damage it further when removing it from the device. This guide will show you how to do this in a safe manner.



TOOLS:

- [Phillips Head Screwdriver: Size PH1](#) (1)
 - [Suction Handle](#) (1)
 - [Soldering Iron](#) (1)
 - [iFixit Opening Tools](#) (1)
 - [Heat Gun](#) (1)
-

Step 1 — Back Cover



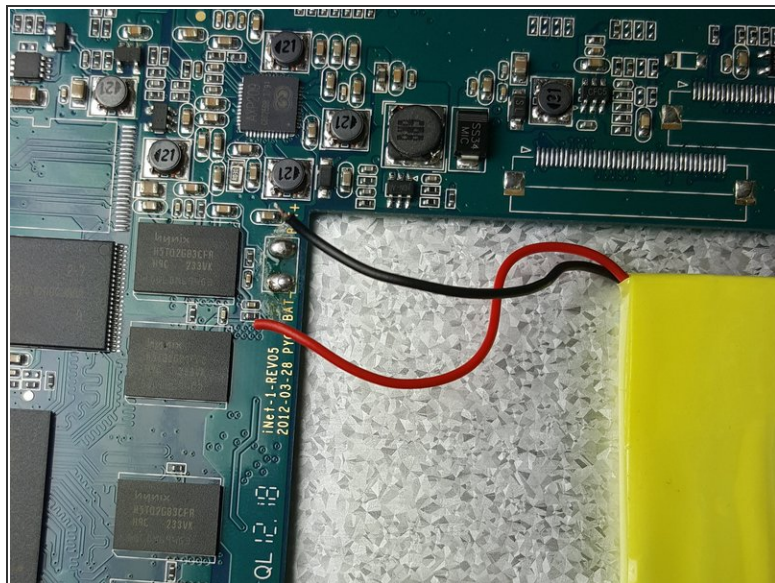
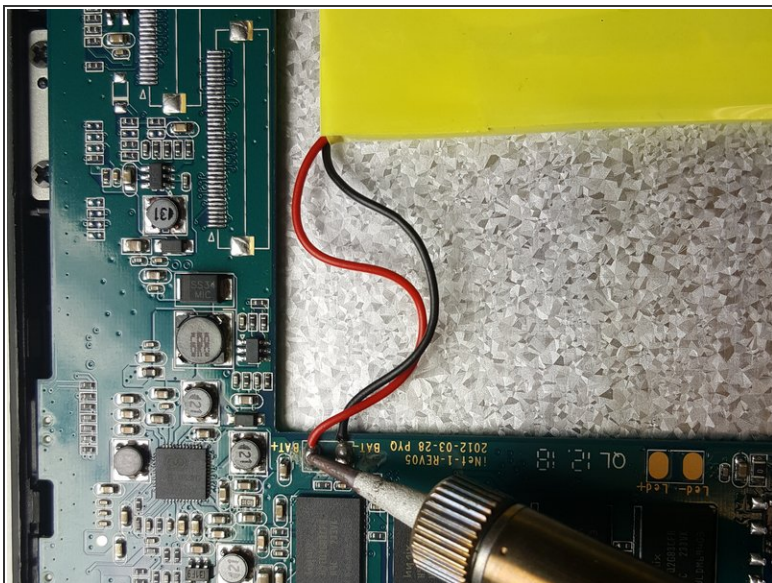
- Remove the two 4.1 mm PH1 screws with a Philips screwdriver.

Step 2



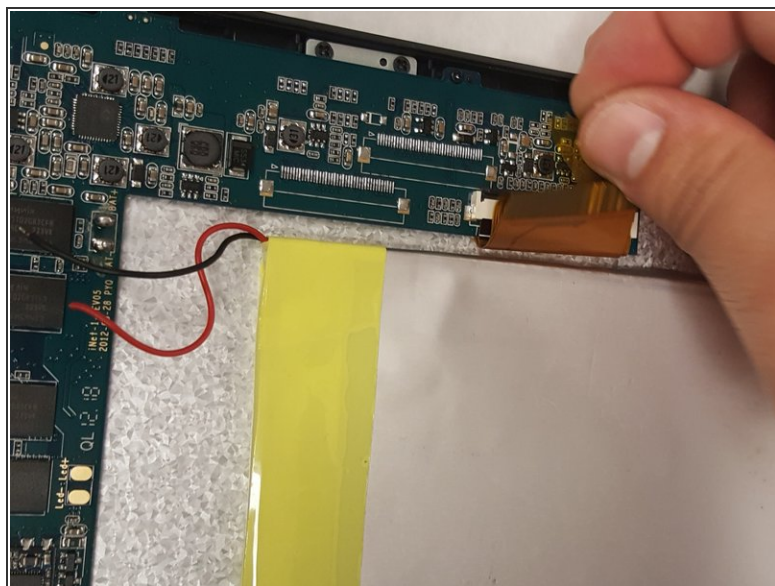
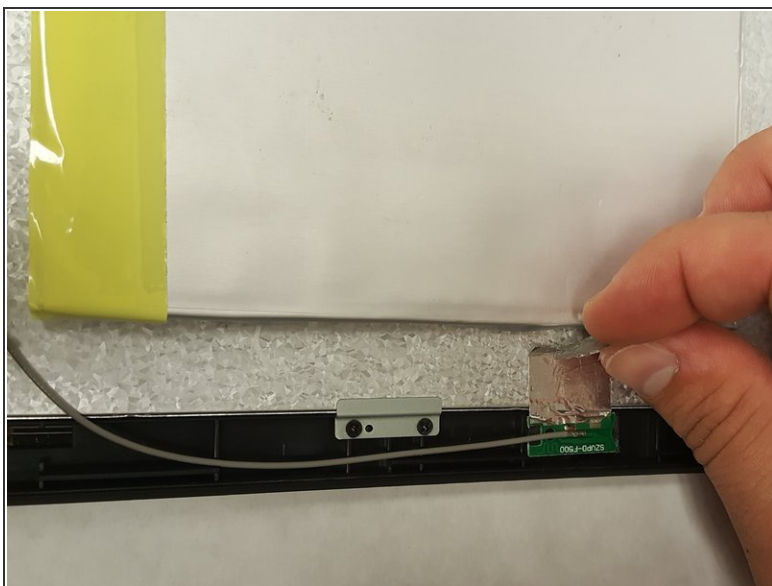
- Press the small suction cup on the back cover, and then pull the small suction cup to remove the back cover.

Step 3 — Battery



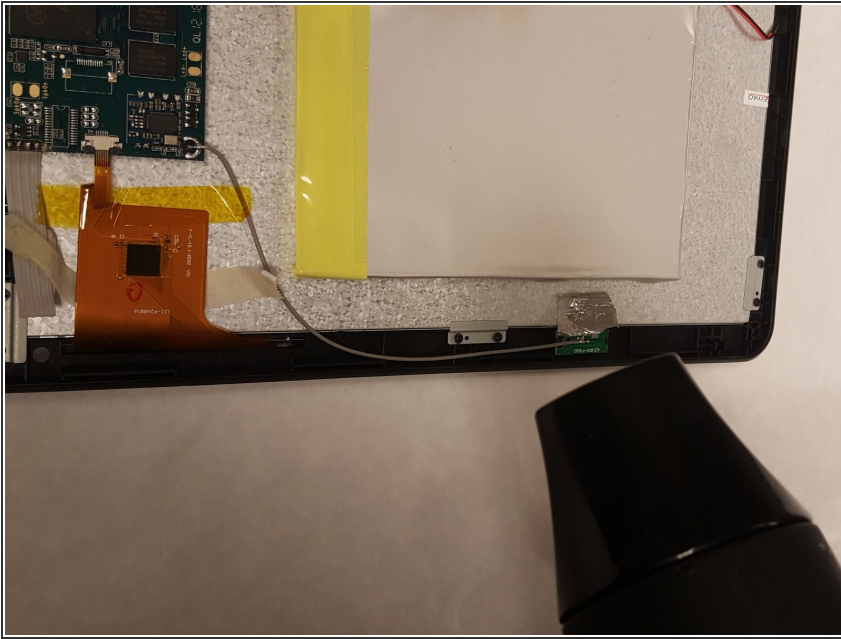
- Desolder the battery wires with a soldering iron; pull the wires out.
- Check out [this awesome guide](#) for tips on soldering and desoldering.

Step 4



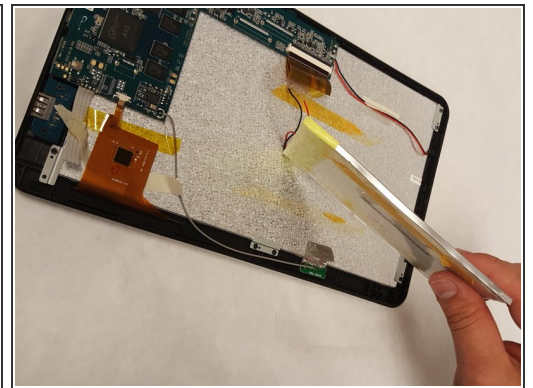
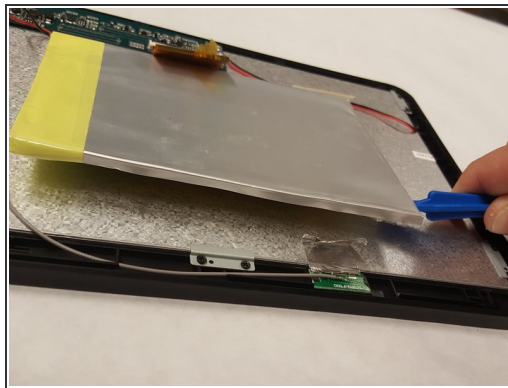
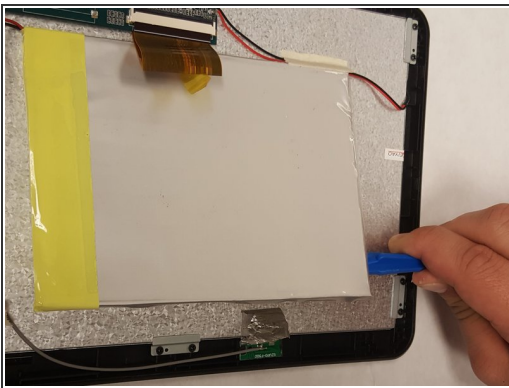
- Remove the two pieces of tape on the battery.

Step 5



- Apply heat around the edges of the battery with a hair dryer.

Step 6



- Pry off the battery with a plastic opening tool.

To reassemble your device, follow these instructions in reverse order.