



iNet M1001 Motherboard Replacement

Replacing the motherboard of iNet M1001 tablet.

Written By: Abdulateef Abola



INTRODUCTION

This guide will show users how to replace the motherboard of the iNet M1001 tablet. This guide is for you if one or more parts of your motherboard have gone out. For example if the WiFi chip, gyroscope, or board has gone bad. This guide uses soldering in a few steps to get the board out.

TOOLS:

- [Phillips Head Screwdriver: Size PH1](#) (1)
 - [Suction Handle](#) (1)
 - [Phillips head screwdriver Size PH00](#) (1)
 - [Soldering Iron](#) (1)
 - [iFixit Opening Tools](#) (1)
-

Step 1 — Back Cover



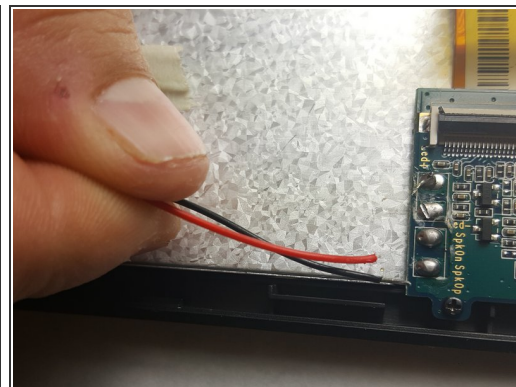
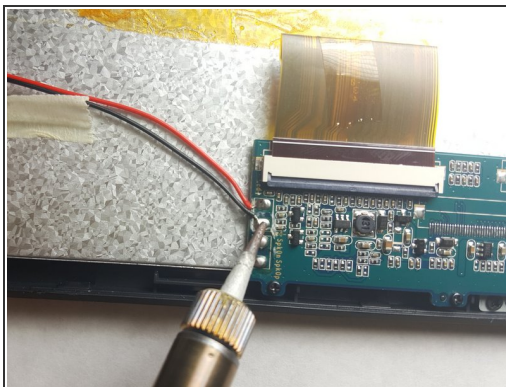
- Remove the two 4.1 mm PH1 screws with a Philips screwdriver.

Step 2



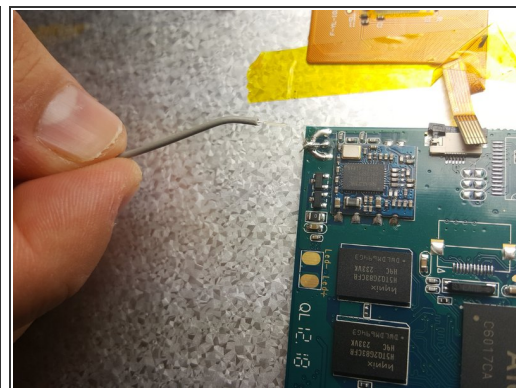
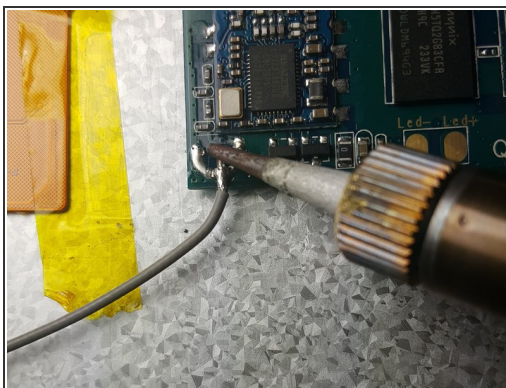
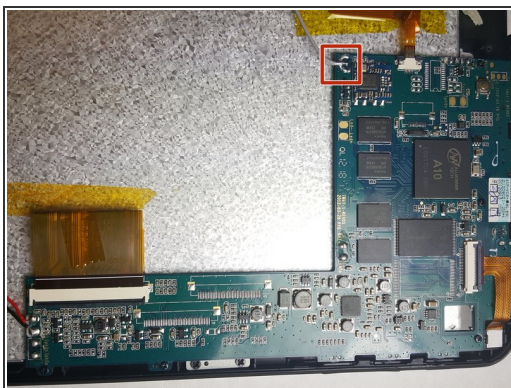
- Press the small suction cup on the back cover, and then pull the small suction cup to remove the back cover.

Step 3 — Motherboard



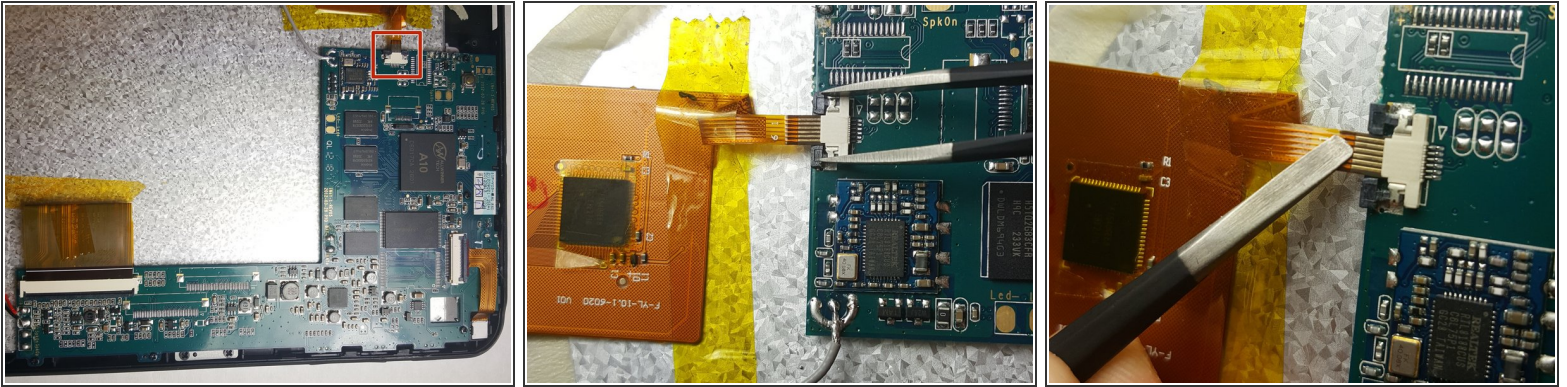
- Desolder the black and red wires and pull them off of the motherboard.
- Check out [this awesome guide](#) for tips on soldering and desoldering.

Step 4



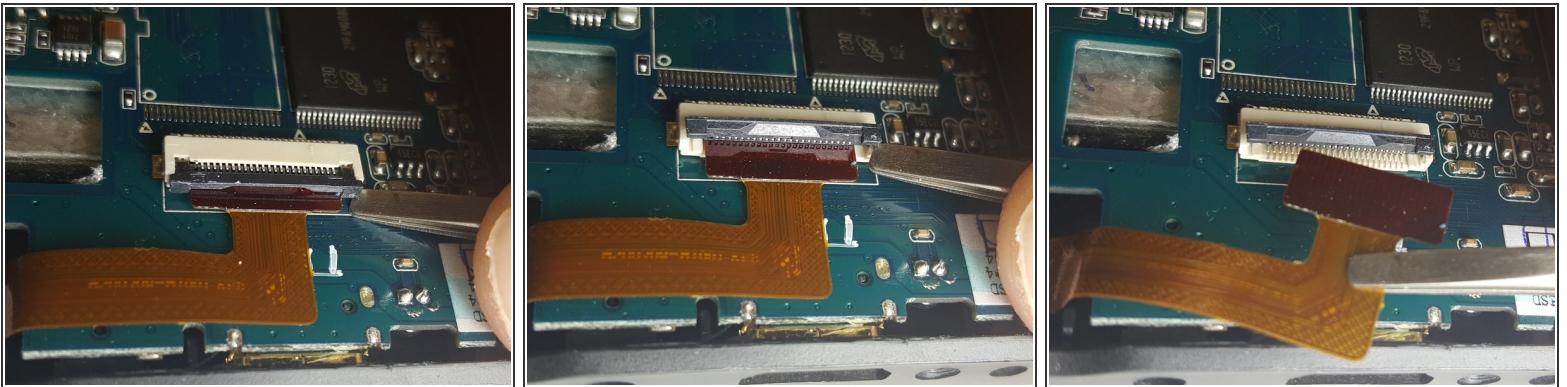
- Desolder the grey wire and pull it off the motherboard.

Step 5



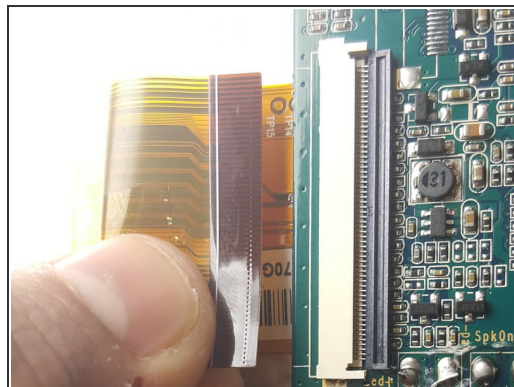
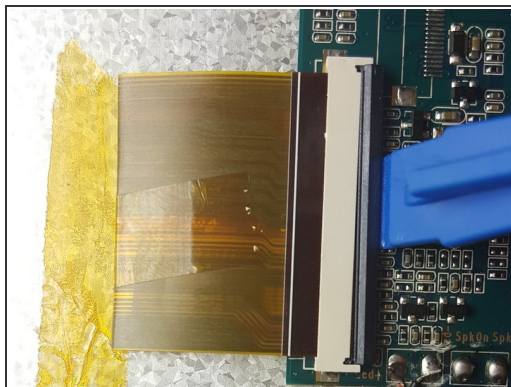
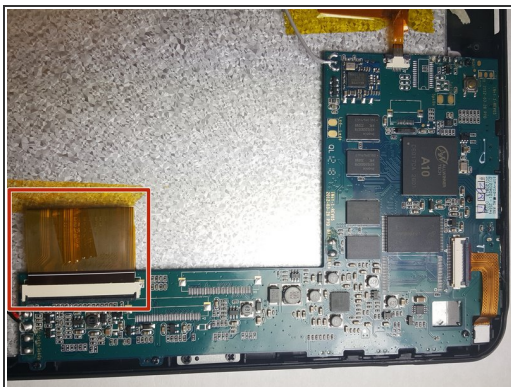
- Push out the ribbon cable connectors with a tweezer and pull out the ribbon cable.

Step 6



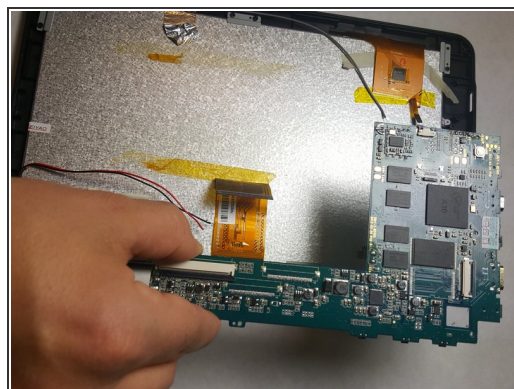
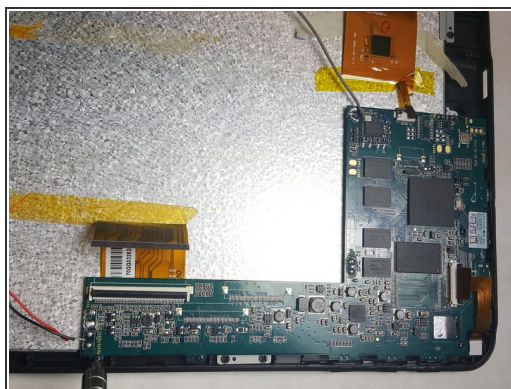
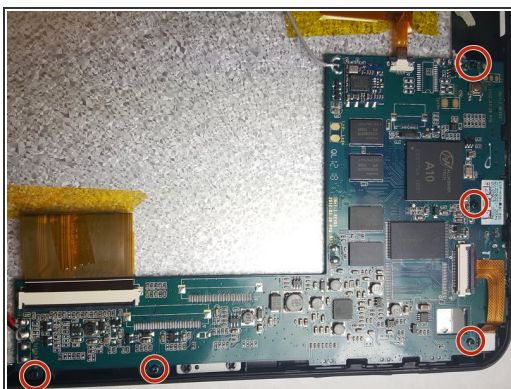
- Lift up the zero insertion force clip with a tweezer and pull out the ribbon cable.

Step 7



- Lift up the zero insertion force clip with a plastic opening tool and pull out the ribbon cable.

Step 8



- Remove the five 5.7mm PH00 screws with a screwdriver and pull out the motherboard.

To reassemble your device, follow these instructions in reverse order.