



iON SnapCam 1045 Wearable HD Video Camera Lens Replacement

This guide shows how to replace the iON SnapCam camera lens.

Written By: Jessica Matias



INTRODUCTION

A basic representation on replacing the lens on the iON SnapCam 1045.



TOOLS:

- [Metal Spudger](#) (1)
 - [Phillips #000 Screwdriver](#) (1)
 - [iFixit Opening Tools](#) (1)
-

Step 1 — Battery



- Detach the magnetic clip from the bottom of the camera.
- The magnetic clip gets in the way of disassembly because it constantly spins and therefore a distraction so it is imperative to detach.

Step 2



- Use a spudger to gently detach the memory card and USB slot cover.

Step 3



- Use a Phillips #000 Screwdriver to loosen the 0.008 mm screw located between the USB and memory card slots.

⚠ This screw is really tiny and can easily fall off and get lost! Make use of a magnetic mat to hold it in place or better still put the magnetic clip to use for keeping the screw safe.

Step 4



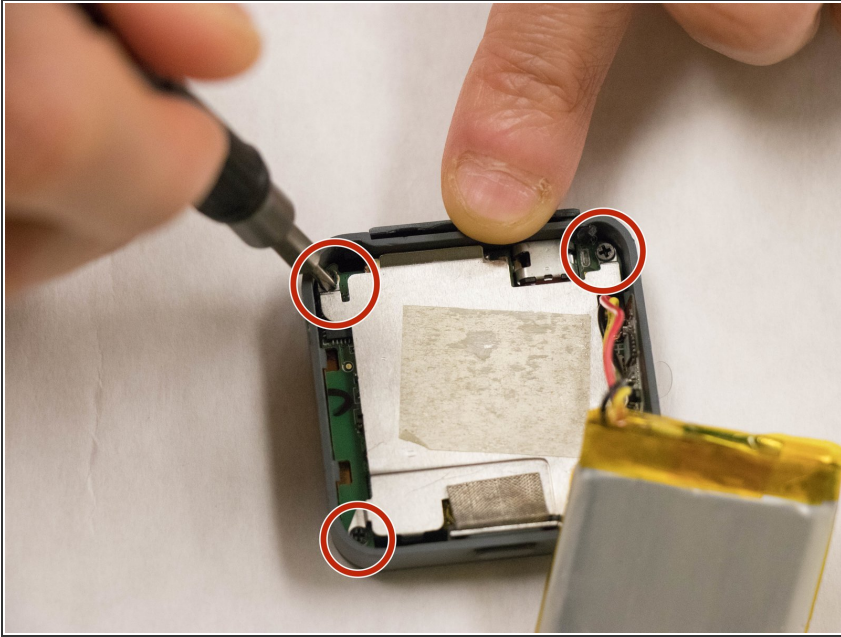
- Once again use the spudger to gently open the encasement.

⚠ The case is a little fragile and forceful entry could lead to damage of the plastic case. Thread carefully.

- The Battery can be safely detached and replaced.

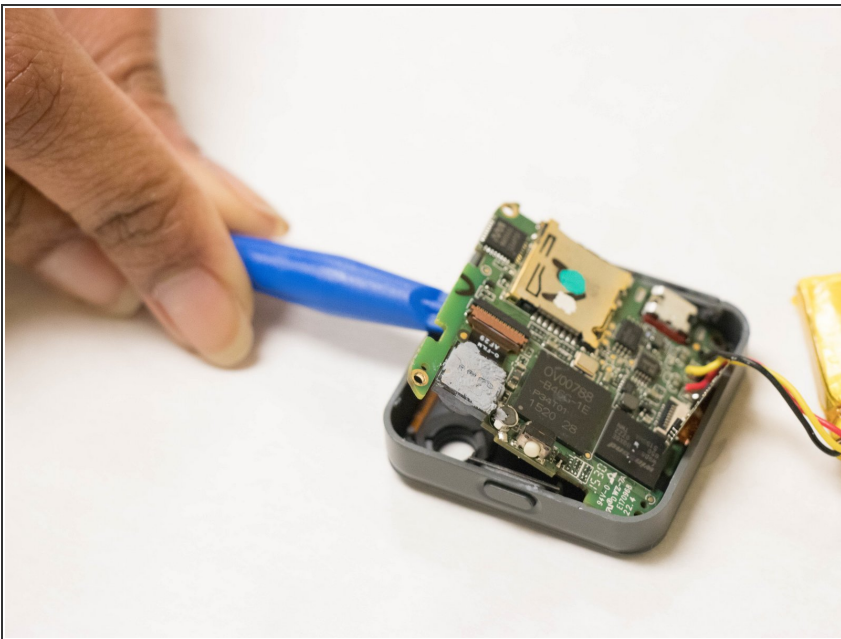
This document was generated on 2019-09-18 11:44:32 PM (MST).

Step 5 — Motherboard



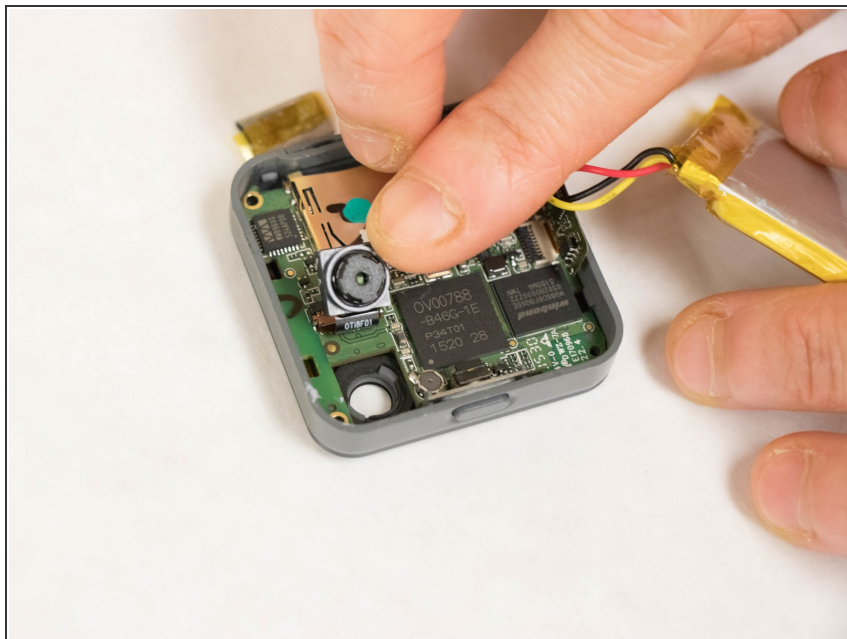
- To get to the motherboard, safely lift the battery to expose an Aluminium plate that shields and holds the motherboard in place.
- The plates are held down by four Phillips 0.008 mm screws on all four corners. Use a Phillips head #000 to safely loosen the screws.

Step 6



- To replace the motherboard gently insert a plastic opening tool into one end and lift up.
- ⚠ Be careful to avoid inserting material that is rough and too sturdy as it can damage components on the motherboard.

Step 7 — Lens



- The motherboard is in plain sight . The lens assembly is located on the lower left part of the motherboard just to the left of the power button.
- To replace the lens assembly, simply flip it up and detach.

To reassemble your device, follow these instructions in reverse order.