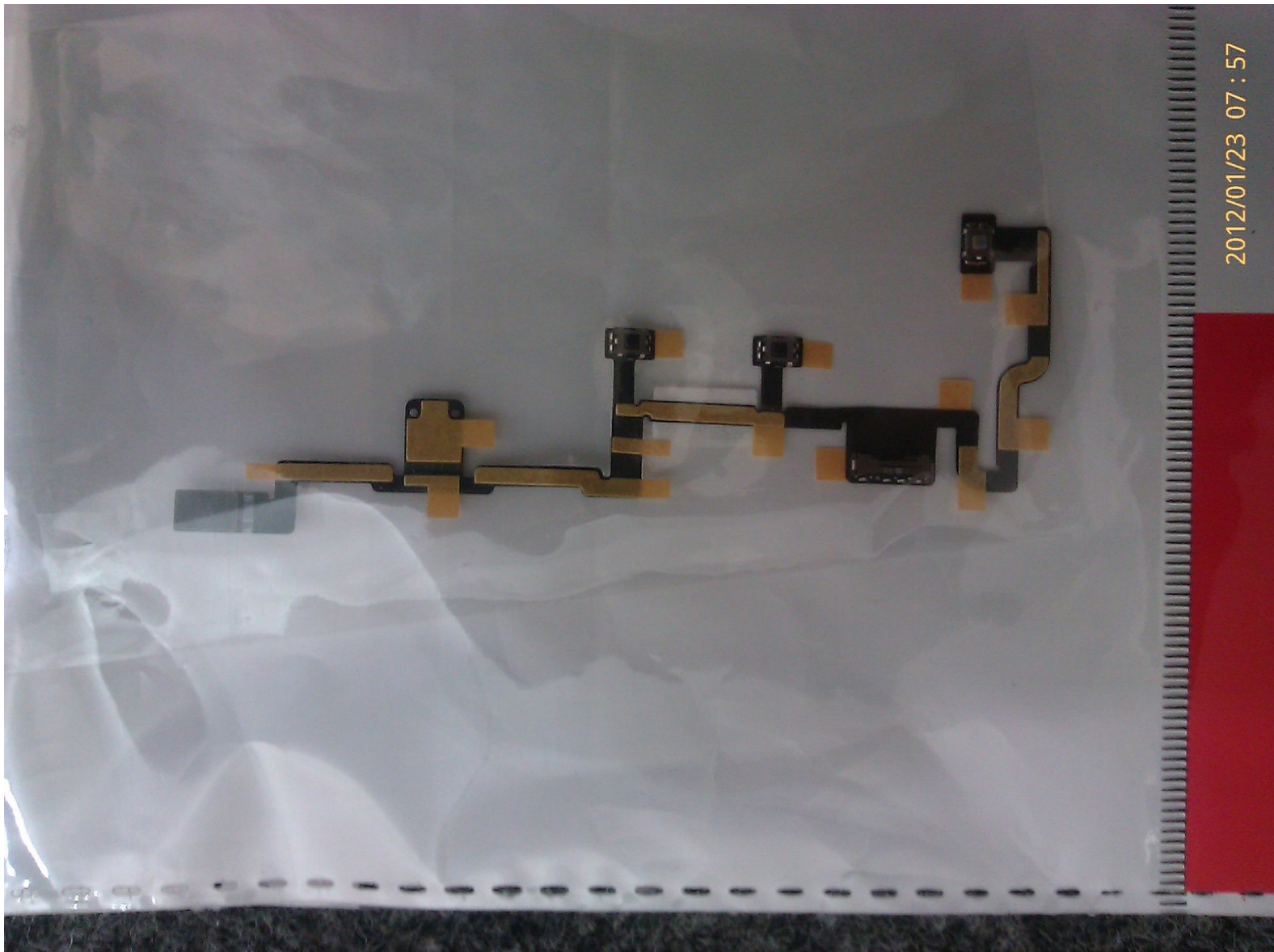




iPad 2 GSM Replace Power ON/OFF Flex Cable Replacement

Replace Power ON/OFF Flex Cable

Written By: Manuel carrion



INTRODUCTION

flexible cable as a replacement power button. an open and ipad 2. and removed the LCD panel and digital.



TOOLS:

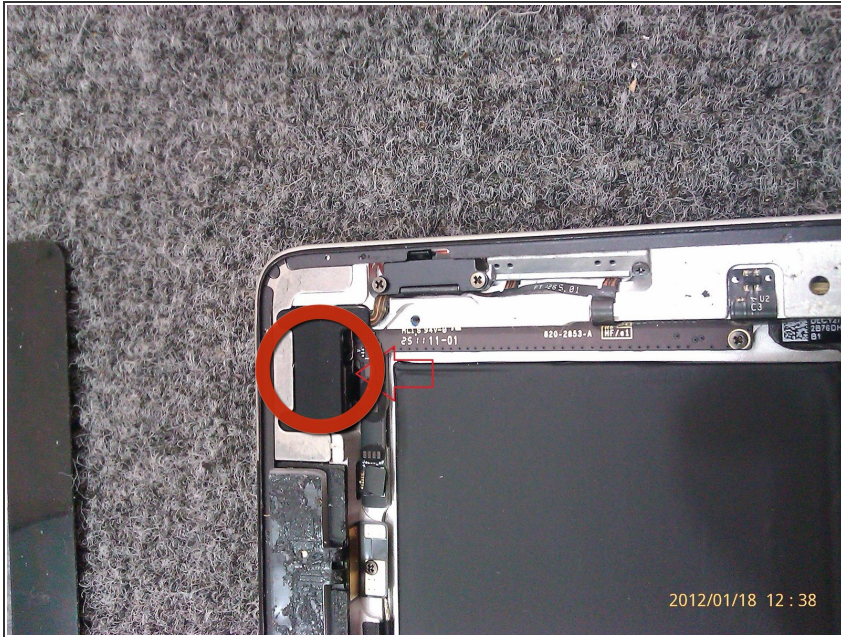
- [iFixit Opening Picks set of 6](#) (1)
- [iOpener](#) (1)
- [Phillips #00 Screwdriver](#) (1)
- [iFixit Opening Tools](#) (1)
- [Spudger](#) (1)



PARTS:

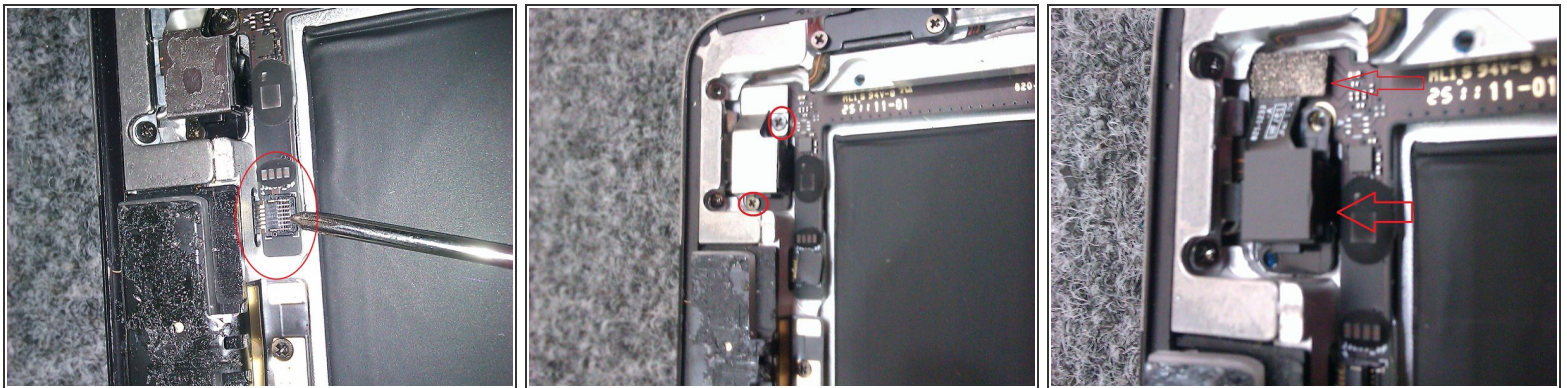
- [iPad 2 power volume flex ribbon cable](#) (1)

Step 1 — Replace Power ON/OFF Flex Cable



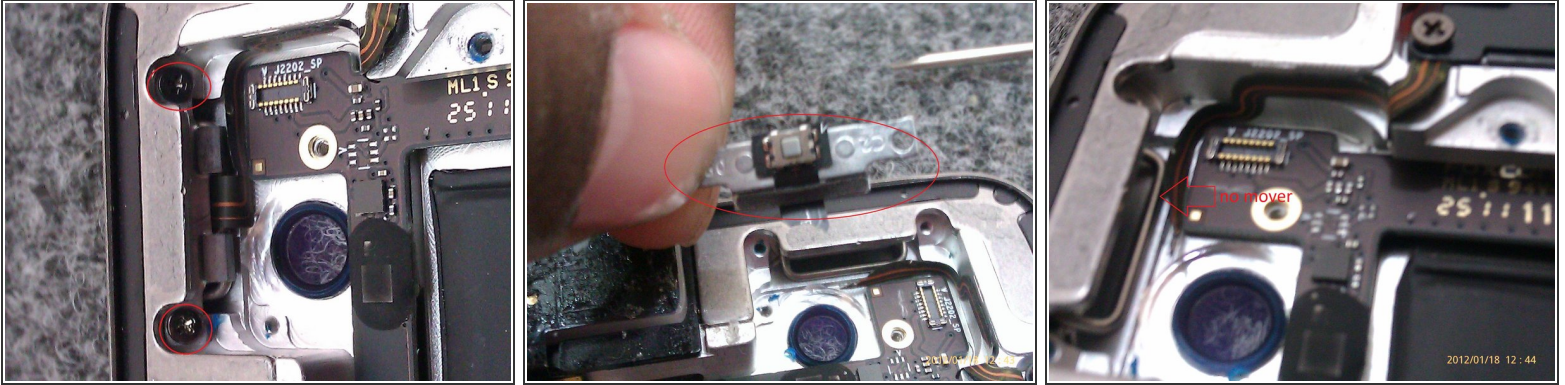
- Once opened, proceed to remove the rubber cover that covers the rear facing camera and the power button. Just pull out the rubber piece shown. There are no screws or glue.

Step 2



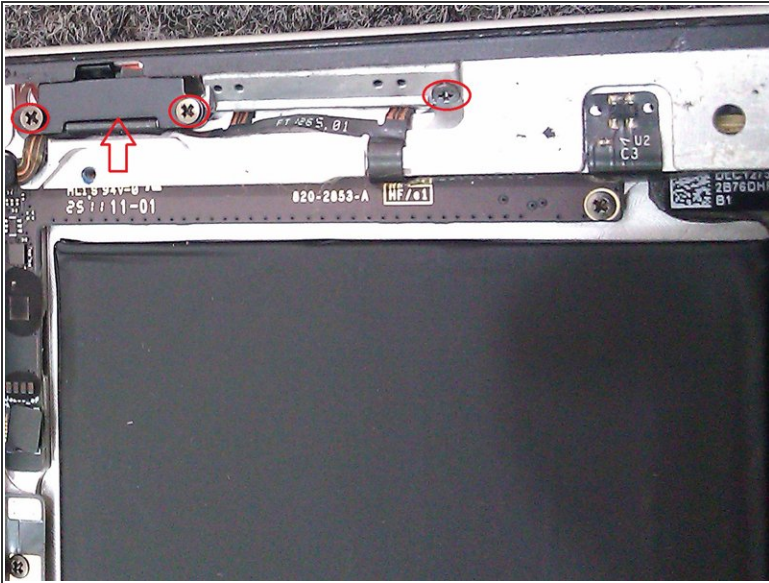
- Some models have a small GSM flex cable (Shown in the 1st picture, circled in red). There is a piece of tape covering it and will need to be removed. Then underneath the tape, there is a small tab, which is closest to the LCD screen. Lift gently on this tab with a smudger tool. In a later step, the flex cable will be removed from the board.
- Remove the screws from the metal plate on the power button, and gently detach the connector where indicated. During the removal, the metal cover and the rear facing camera may come out together.

Step 3



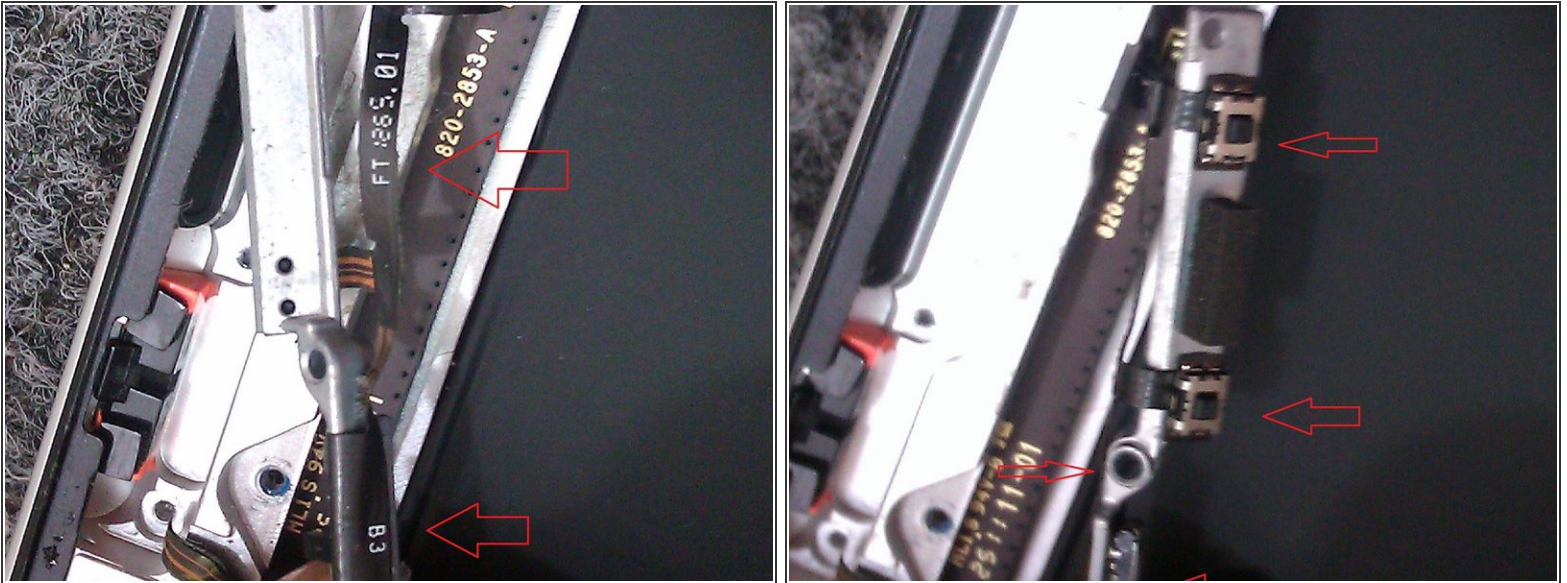
- You now can access the power button.
- Remove the 2 screws that secure the metal bracket and then carefully remove the metal bracket with the power button on the ribbon cable.
- Note: As shown in the 3rd picture, It is important that the clip connected to the external plastic power button does not get removed completely. It is tricky to put this plastic button back into the hole.

Step 4



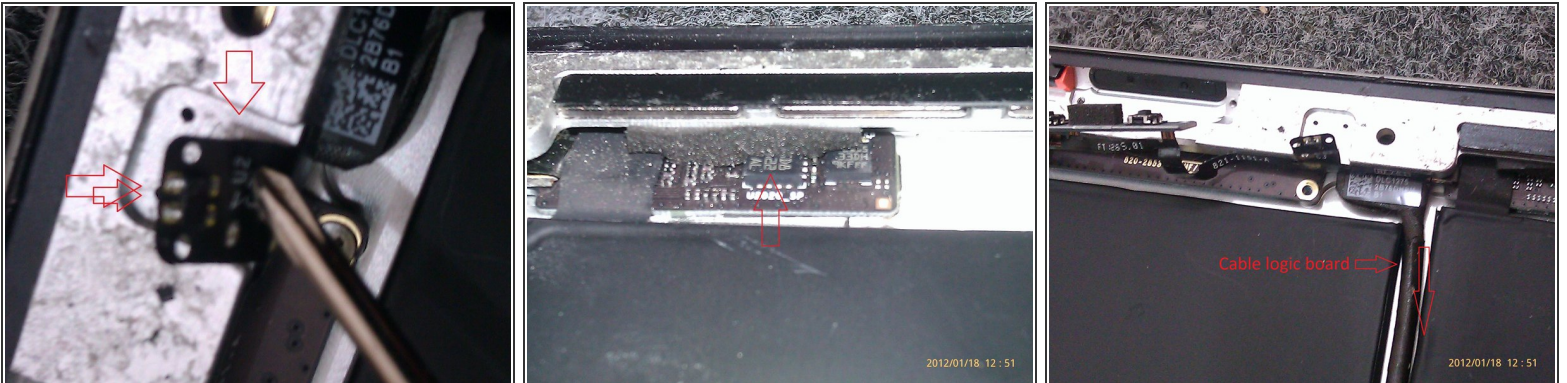
- Remove the 2 screws from the black metal part which covers the mute switch. Also remove the 1 screw, which is attached to the silver metal piece.
- We remove the black metal part to release the mute switch and volume buttons, which are attached to another silver metal piece.
- Note for reinstallation: After screwing back the metal pieces, perform a quick check that the buttons work properly. For the mute button make sure that the exterior and interior switches are sliding together. For the volume buttons, check that the buttons make a clicking noise. If the screws are too tight, then the volume buttons can be stuck.
- Note: If the volume buttons were stuck, just loosening the screw on the silver metal piece may fix the problem. The whole flex assembly may not need to be replaced.

Step 5



- The location of the mute switch and volume buttons are indicated in the pictures. Please make a note of their placement to be able to stick them in their proper locations.

Step 6



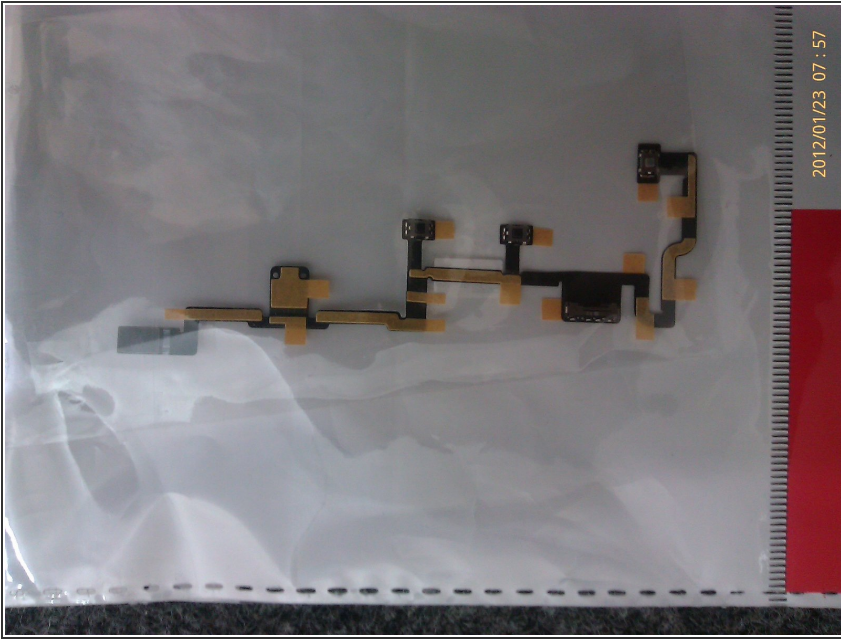
- Carefully take off the flexible tab.
- Remove the screw from the board.
- There is a foam insert that has to be taken out carefully. You can disconnect the other end of the cable going to the logic board. This makes it easier to remove the logic board.

Step 7



- Before removing the board, be very careful because the board is glued to the rear chassis. Use a splugger at the points indicated by the arrow to loosen the adhesive connecting the board to the chassis.
- Once the board is free of the chassis, then carefully remove the tape as pointed to by the arrow. There will be a connector to be removed from the board with a splugger.

Step 8



- Carefully reverse the steps used to remove the old flex cable to reinstall the new cable to complete the installation.

To reassemble your device, follow these instructions in reverse order.