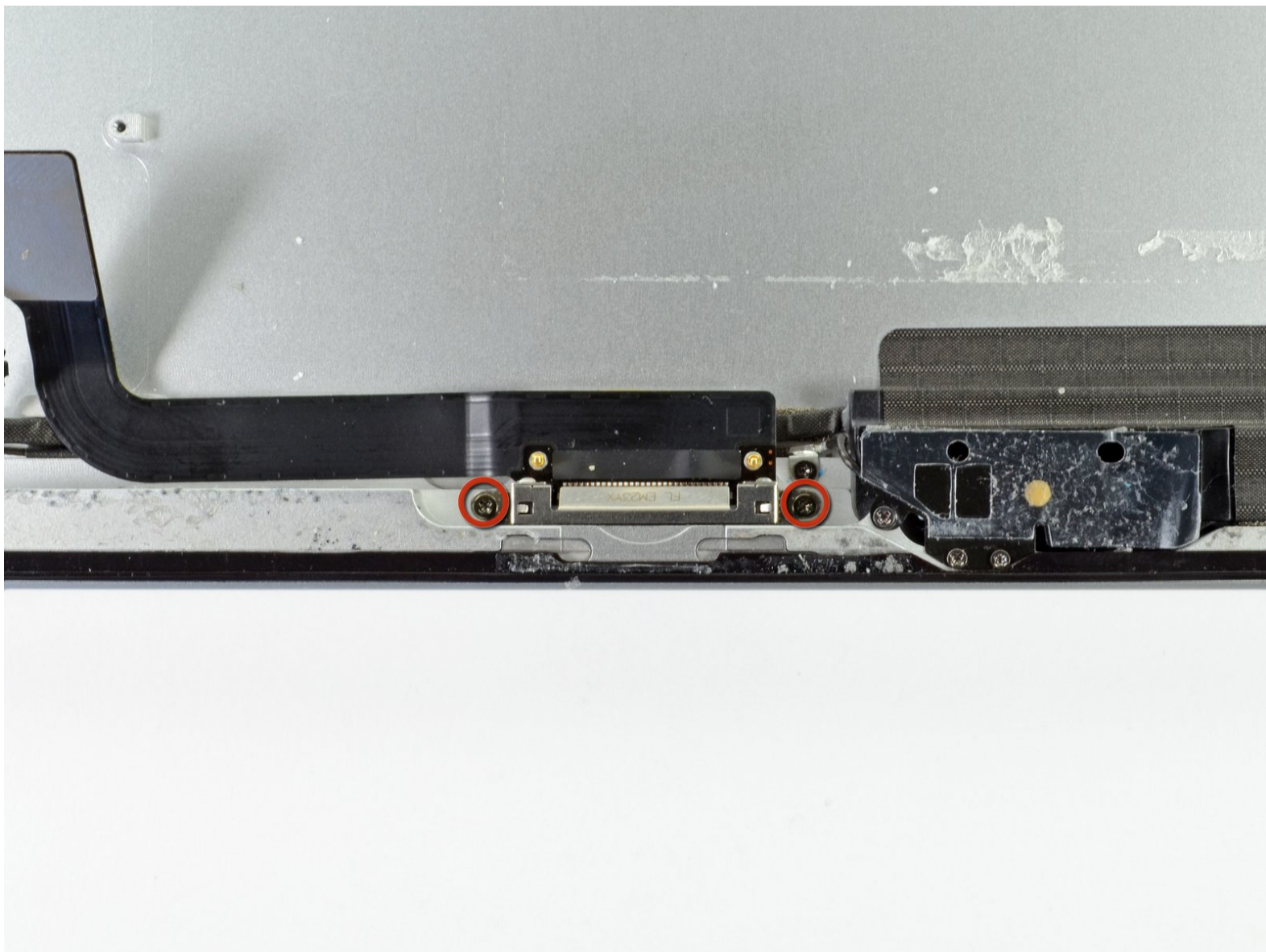




# iPad 3 4G Speaker Replacement

Removing the dock connector with the battery out

Written By: Brett Hartt



---

# INTRODUCTION

Removing the dock connector with the battery out

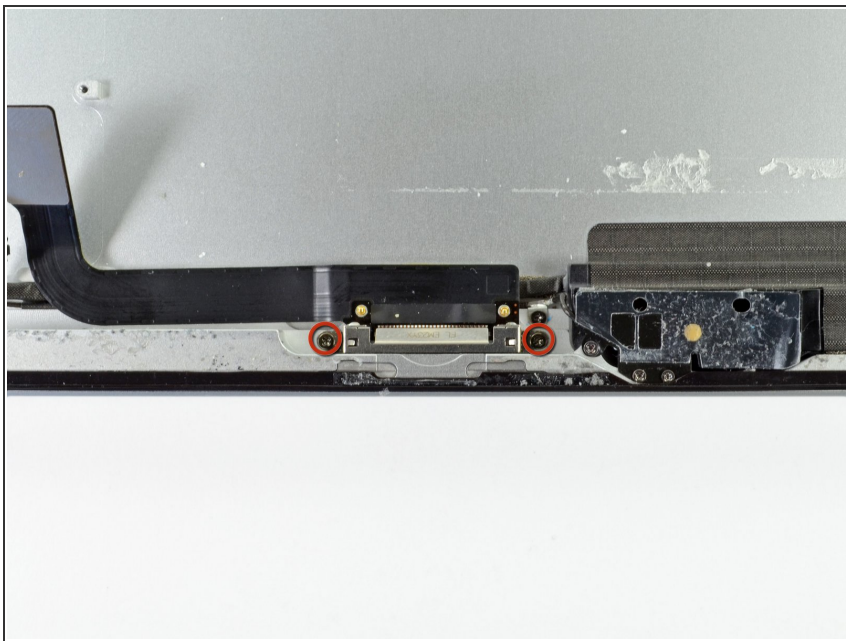
---



## TOOLS:

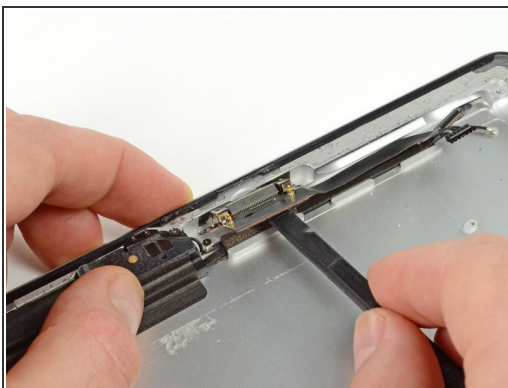
- [Phillips #00 Screwdriver](#) (1)
  - [Spudger](#) (1)
-

## Step 1 — Speaker



- Remove the two 1.8 mm Phillips #00 screws securing the dock connector to the rear aluminum case.

## Step 2



- Using the flat end of a spudger, lift up the dock connector.
- Remove the dock connector from the iPad.

To reassemble your device, follow these instructions in reverse order.