



# iPad 4 Wi-Fi Power & Volume Button Assembly Replacement

Internal Prereq.

Written By: Walter Galan



# INTRODUCTION

Internal Prereq.



## TOOLS:

- [Phillips #0 Screwdriver](#) (1)
  - [Phillips #00 Screwdriver](#) (1)
  - [iFixit Opening Tools](#) (1)
  - [Spudger](#) (1)
-

## Step 1 — Power & Volume Button Assembly



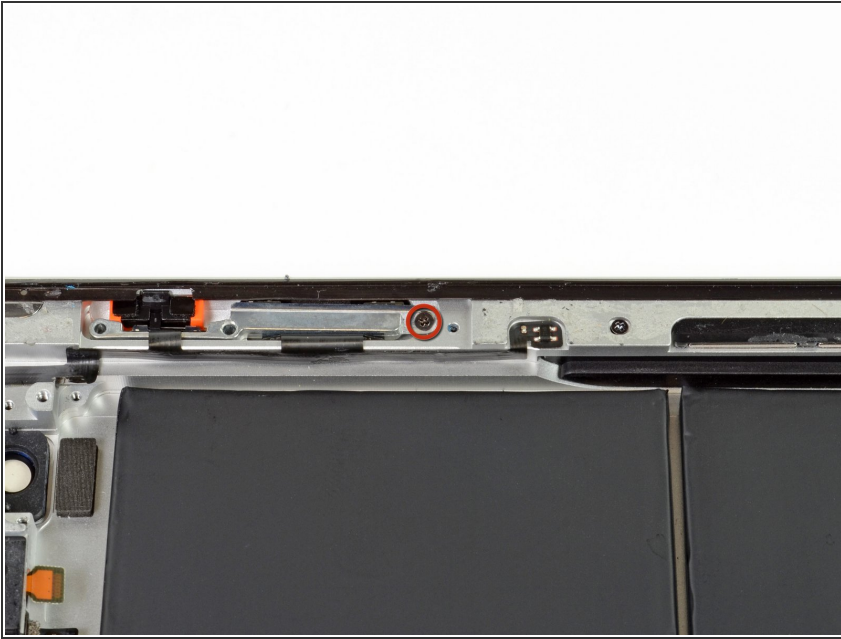
- Remove the following screws securing the power & volume button cable to the aluminum frame:
  - Two 5.5 mm Phillips #0
  - One 2.6 mm Phillips #0
  - Two 2.6 mm Phillips #0
- ⓘ The two screws located on top are angled into the aluminum frame. Be sure to always hold the screwdriver in line with the screw.

## Step 2



- Remove the piece of plastic covering the volume buttons.

### Step 3



- Remove the single 2.6 mm Phillips #00 screw holding the volume button frame to the aluminum frame.
- ⓘ This screw is angled into the aluminum frame. Be sure to always hold the screwdriver in line with the screw.

### Step 4



- Wedge the edge of a plastic opening tool underneath the sleep/wake sensor, being careful to not damage the fragile cable.
- Move the plastic opening tool around the sensor, releasing the adhesive.

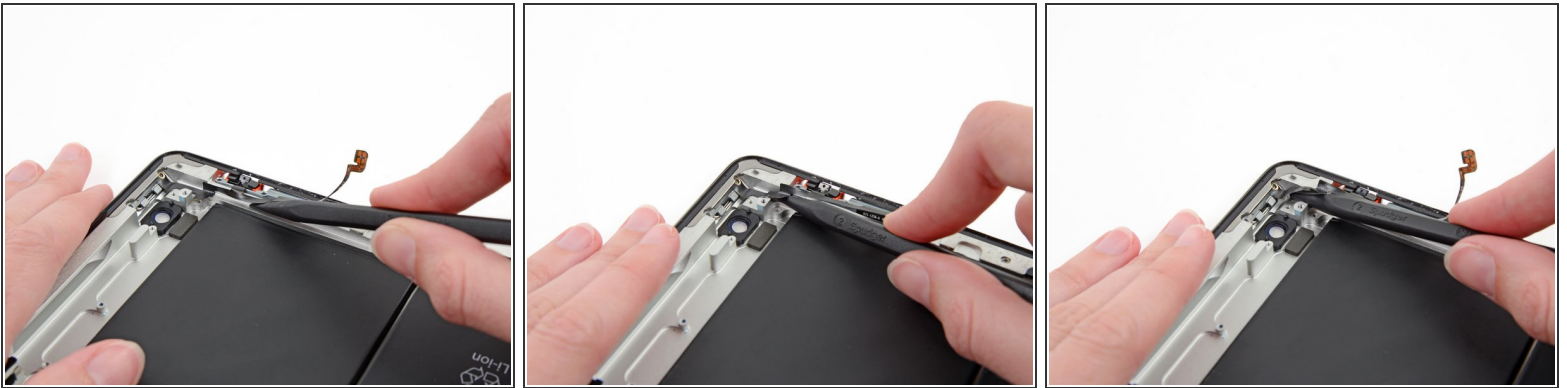


## Step 5



- Slide the tip of a spudger underneath the power & volume cables, releasing the adhesive.

## Step 6



- Using the tip of the spudger rather than the wide edge, release the adhesive underneath the volume button branch of the ribbon cable.
- Continue sliding the tip of the spudger toward the top of the iPad, releasing the adhesive.
- With the tip of the spudger still underneath the ribbon cable, gently lift the power button out of its socket in the aluminum frame.

## Step 7



- Lift and remove the power & volume button cable out of the iPad.

To reassemble your device, follow these instructions in reverse order.