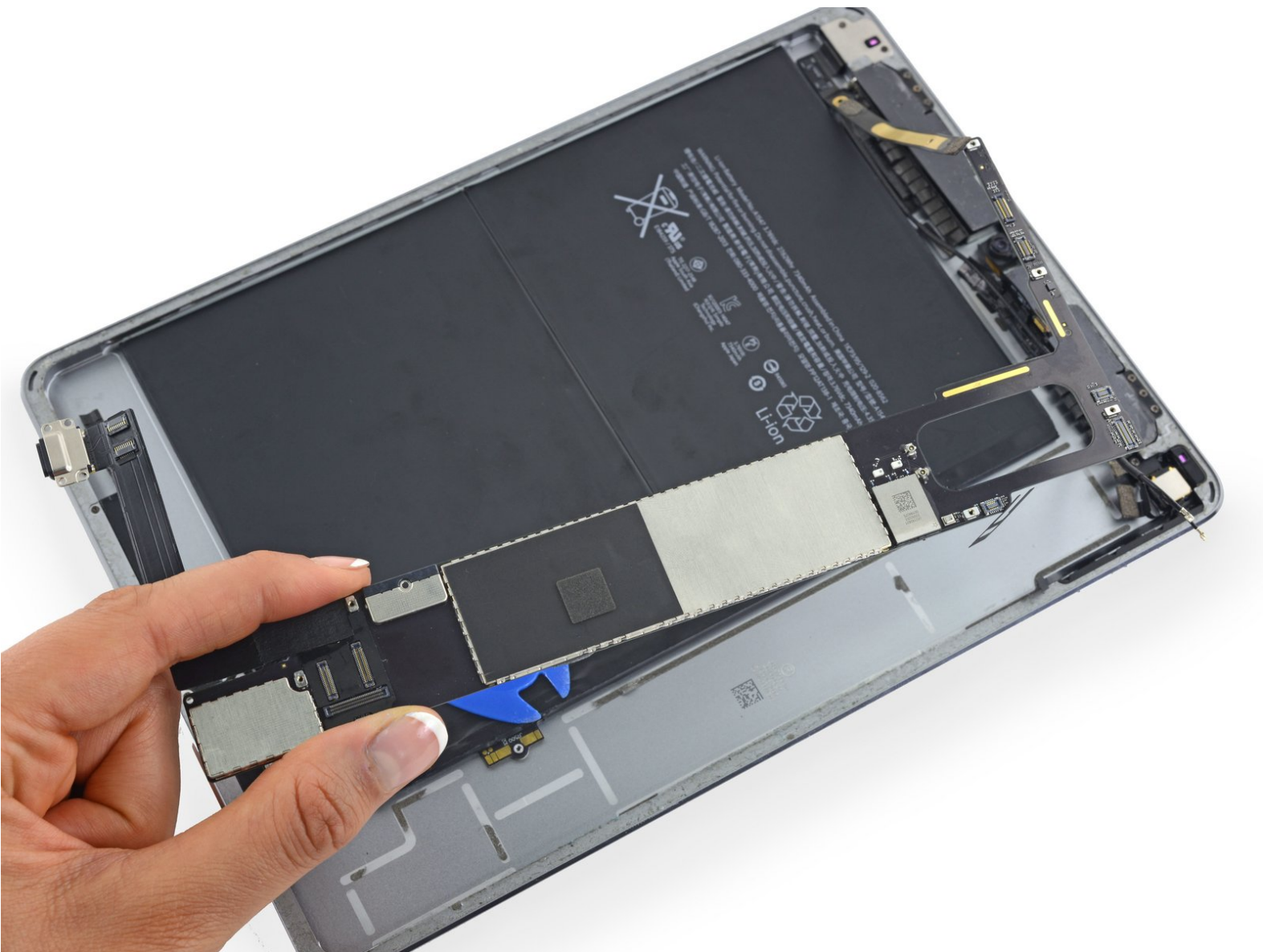




iPad Air 2 Wi-Fi Logic Board Replacement

Replace the logic board in an iPad Air 2 Wi-Fi.

Written By: Scott Havard



INTRODUCTION

Use this guide to replace the logic board in an iPad Air 2 Wi-Fi. Note that replacing your logic board will result in a loss of all data and Touch ID functionality.



TOOLS:

- [iFixit Opening Picks set of 6](#) (1)
- [iPad Battery Isolation Pick](#) (1)
- [Phillips #00 Screwdriver](#) (1)
- [iOpener](#) (1)
- [Suction Handle](#) (1)
- [Spudger](#) (1)
- [iFixit Opening Tools](#) (1)
- [Plastic Cards](#) (1)
- [Tweezers](#) (1)



PARTS:

- [iPad Air 2 Wi-Fi Logic Board](#) (1)

Step 1 — iOpener Heating



-  We recommend that you clean your microwave before proceeding, as any nasty gunk on the bottom may end up stuck to the iOpener.
- Place the iOpener in the center of the microwave.
-  For carousel microwaves: Make sure the plate spins freely. If your iOpener gets stuck, it may overheat and burn.

Step 2



- Heat the iOpener for **thirty seconds**.
- Throughout the repair procedure, as the iOpener cools, reheat it in the microwave for an additional thirty seconds at a time.

- ⚠ Be careful not to overheat the iOpener during the repair. Overheating may cause the iOpener to burst.
- ⚠ Never touch the iOpener if it appears swollen.
- ⚠ If the iOpener is still too hot in the middle to touch, continue using it while waiting for it to cool down some more before reheating. A properly heated iOpener should stay warm for up to 10 minutes.

Step 3




- Remove the iOpener from the microwave, holding it by one of the two flat ends to avoid the hot center.
- ⚠ The iOpener will be very hot, so be careful when handling it. Use an oven mitt if necessary.

Step 4 — iPad Air 2 Wi-Fi Opening Procedure



- If your display glass is cracked, keep further breakage contained and prevent bodily harm during your repair by taping the glass.
- Lay overlapping strips of clear packing tape over the iPad's display until the whole face is covered.
 - ⓘ This will keep glass shards contained and provide structural integrity when prying and lifting the display.
- Do your best to follow the rest of the guide as described. However, once the glass is broken, it will likely continue to crack as you work, and you may need to use a metal prying tool to scoop the glass out.

 Wear safety glasses to protect your eyes, and be careful not to damage the LCD screen.

Step 5



- i** The following steps involve using an iOpener to soften the adhesive holding the front panel assembly in place. When using the iOpener, be sure to heat it in the microwave for no more than 30 seconds.
- Handling it by the tabs on either end, place a heated iOpener over the top edge of the iPad.
 - Let the iOpener sit on the iPad for two minutes to soften the adhesive securing the front panel to the rest of the iPad.

Step 6



i While the iPad looks uniform from the outside, there are delicate components under certain portions of the front glass. To avoid damage, only heat and pry in the areas described in each step.

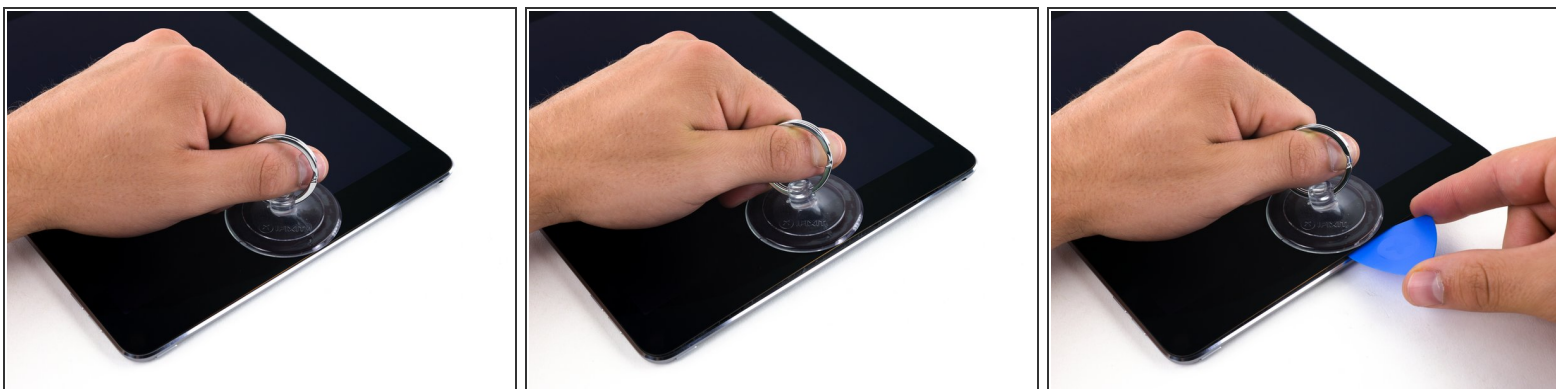
- As you follow the directions, take special care to avoid prying in the following areas:
 - Home Button
 - Front Facing Camera
 - Main Camera

Step 7



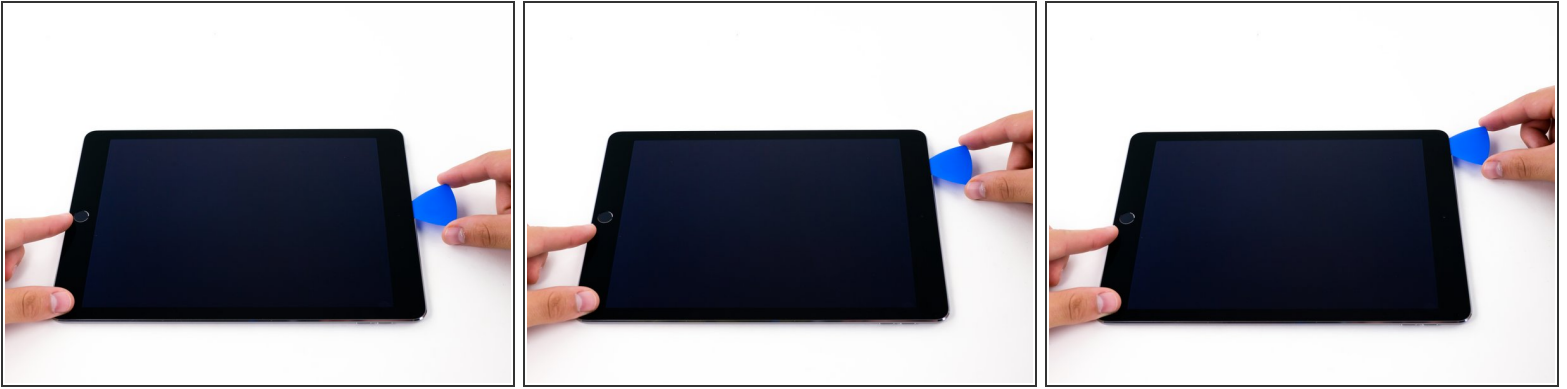
- Place a suction cup over the iPad's front-facing camera and press down to create a seal.
- ⓘ To get the most leverage, place the suction cup as close to the edge as possible without going past the edge of the display.

Step 8





- Firmly pull up on the suction cup to create a small gap between the front panel and the rear case.
- ⚠ Do not pull too hard or you may shatter the glass.
- Once you've opened a sufficient gap, insert an opening pick into the gap to prevent the adhesive from resealing.

Step 9

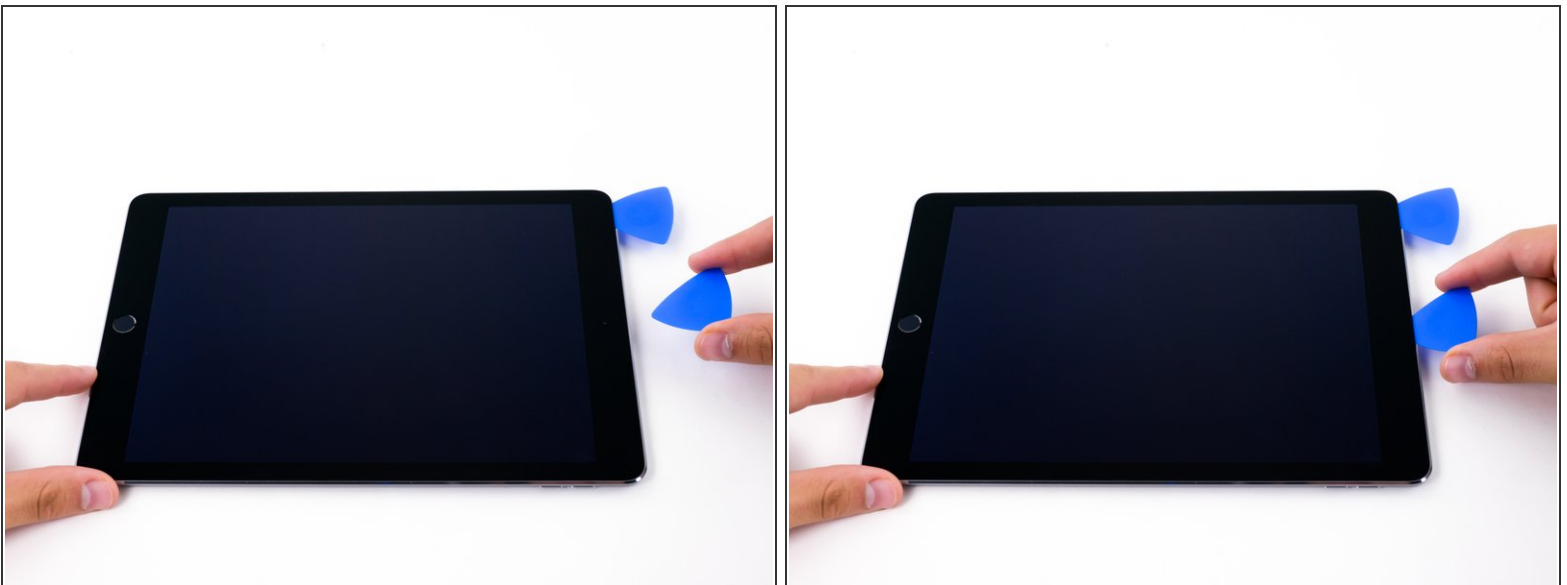


- Slide the pick along the edge of the display, towards the headphone jack.
- If there is still a considerable amount of resistance when sliding the opening pick, repeat the iOpener heating procedure and apply additional heat.

 Be careful not to let the opening pick slide between the fused LCD and front panel, as doing so can permanently damage the display.

-  A good rule of thumb is to never insert the opening pick more than a quarter inch (6 mm) into the iPad.

Step 10



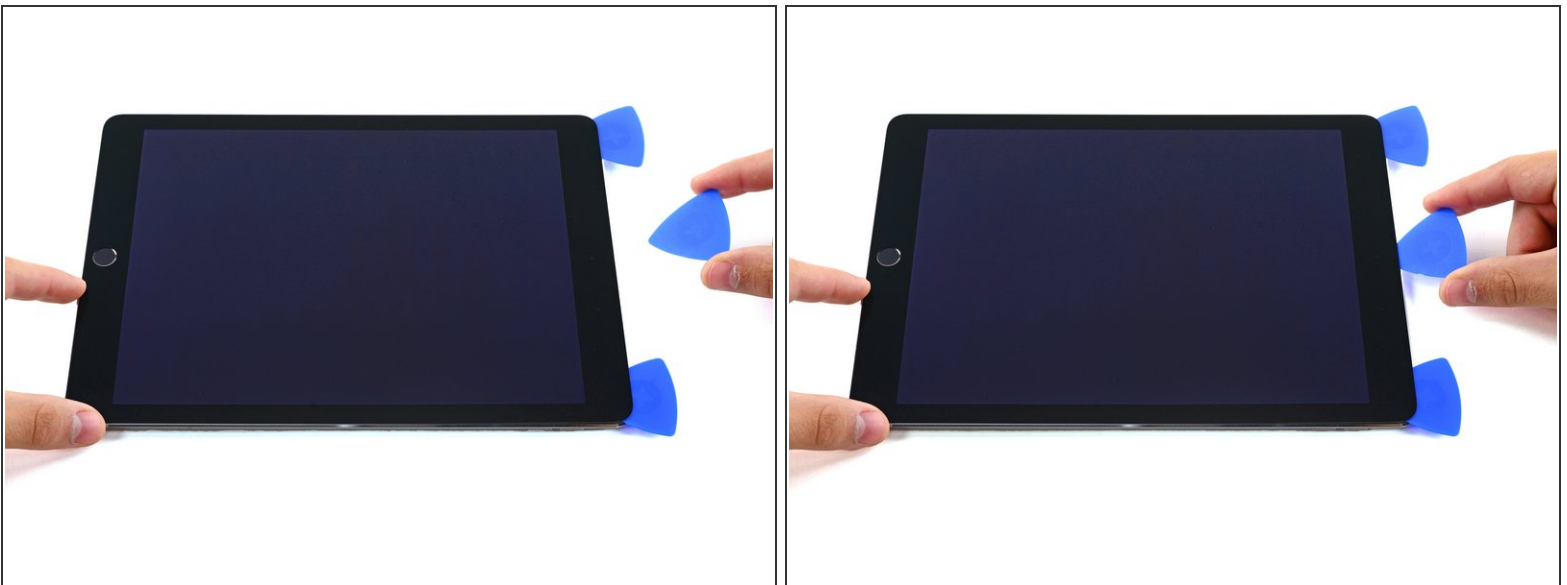
- Insert a second opening pick by the front-facing camera.

Step 11



- Slide the second pick along the top edge of the iPad, towards the Sleep/Wake Button.

Step 12



- Insert a third pick by the front-facing camera.

Step 13



- Bring the right opening pick down and around the top right corner of the iPad.

Step 14



- Bring the left opening pick around the top left corner of the tablet.

Step 15



- Reheat the iOpener and lay it over the right edge of the display to loosen the adhesive underneath.

Step 16



- Slide the right opening pick roughly halfway down the display.

Step 17



- Reheat the iOpener and apply heat to the left side of the iPad.

Step 18



- Slide the left-hand opening pick about halfway down the edge of the display.

Step 19



- Slide the opposite opening pick down to the bottom right corner of the iPad.
- ⓘ If necessary, reheat the adhesive on the right edge to loosen the display assembly.

Step 20



- Slide the left-hand opening pick down the edge of the display until you reach the corner.

Step 21



- Use the iOpener to apply heat to the bottom edge of the iPad.

Step 22



- Bring the right-hand opening pick around the bottom corner of the iPad.

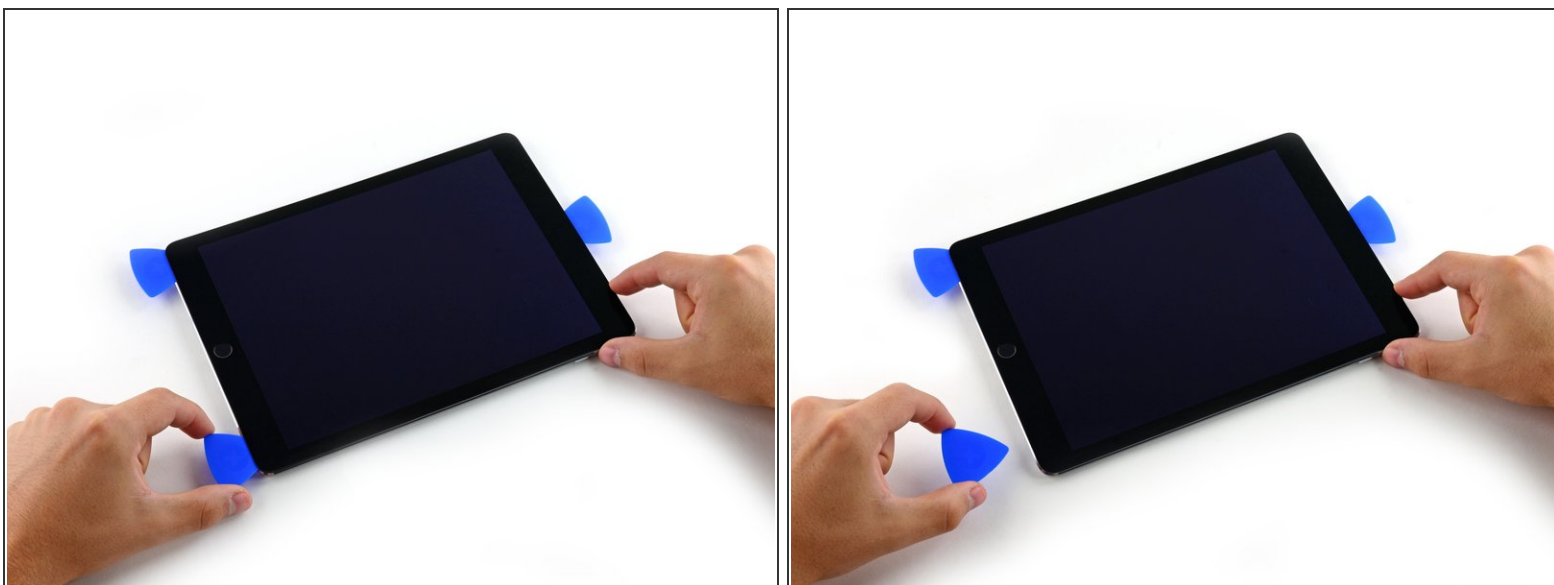
Step 23



- Repeat for the left-hand pick.

- ⓘ Reheat and reapply the iOpener as needed. Always wait at least ten minutes before reheating the iOpener.

Step 24




- Remove the right-hand opening pick at the bottom of the iPad.

Step 25



- Slide the left-hand opening pick along the bottom edge of the display, then remove it from the bottom right corner of the iPad.

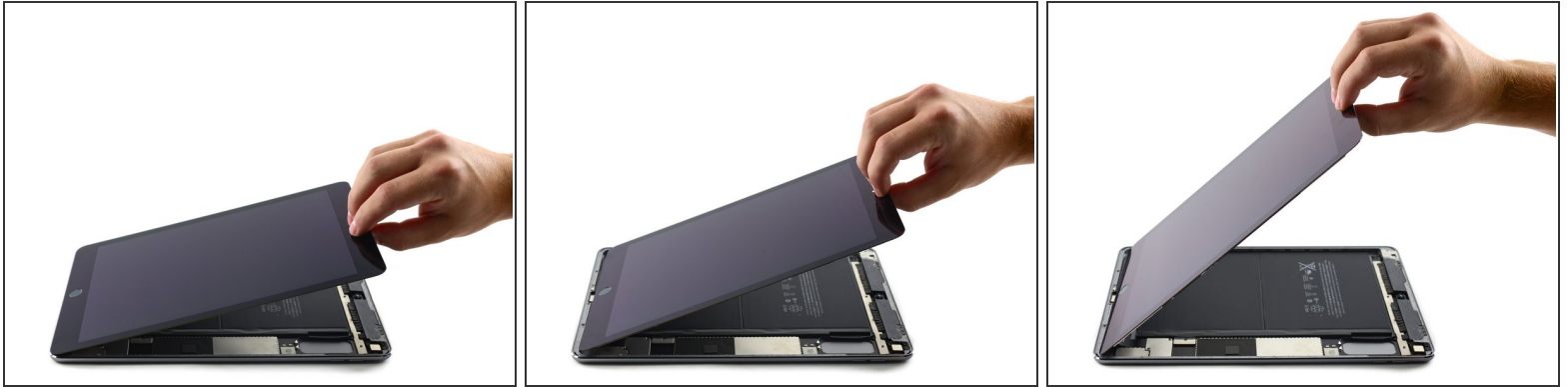
 Be very careful to not insert the pick more than a quarter inch (6 mm) into the display to avoid damaging the Home Button and display cables underneath.

Step 26



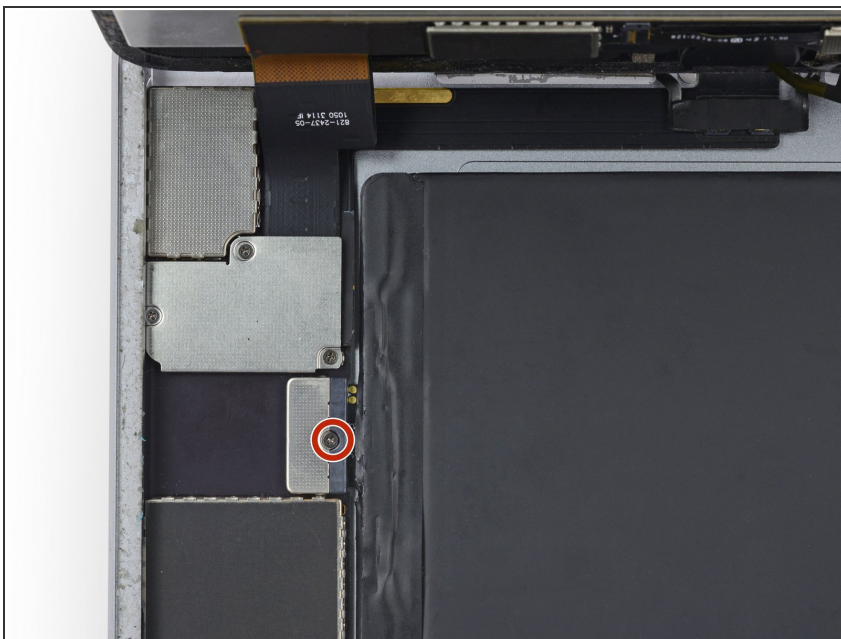
- Twist the remaining pick by the front-facing camera to separate the top edge of the display assembly from the rear case.

Step 27



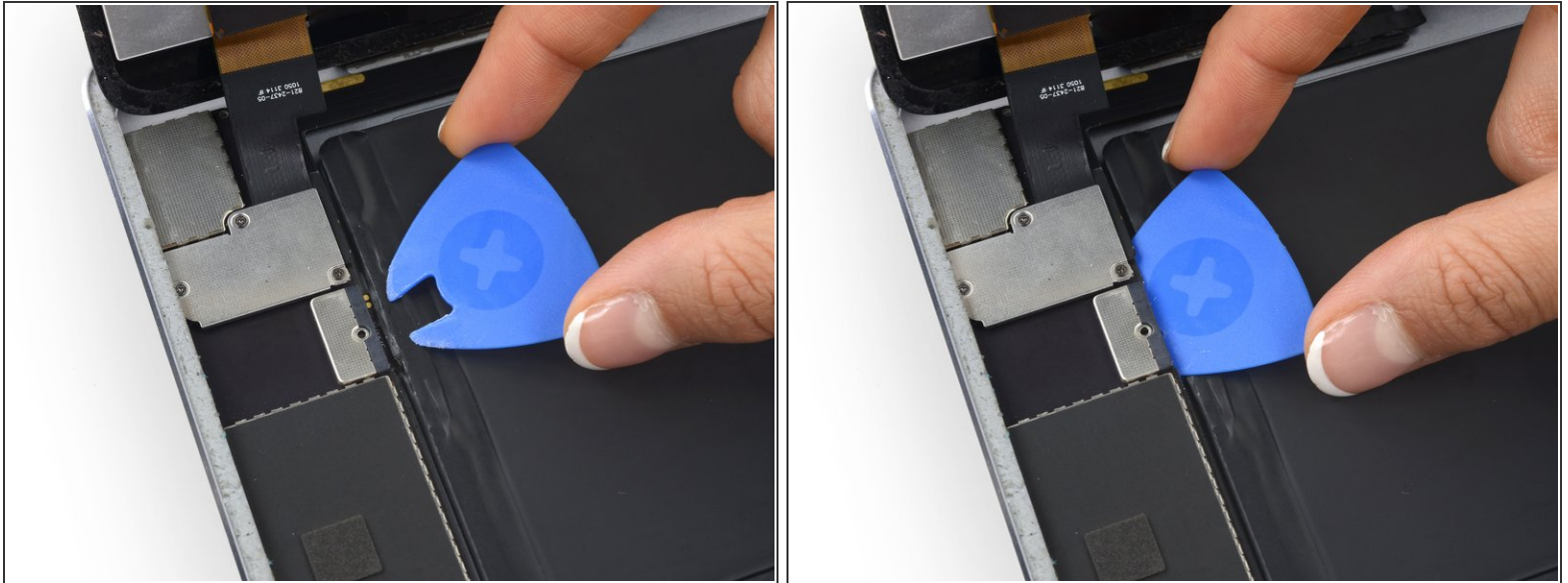
- Continue lifting the display assembly from the front-facing camera side.
 - Pull the display slightly away from the bottom edge to completely separate it from the rear case.
 - Keep lifting until the display assembly is roughly perpendicular to the body of the iPad.
- ⚠ Do **not** attempt to remove the display yet—it is still attached to the rear case by three delicate ribbon cables.

Step 28



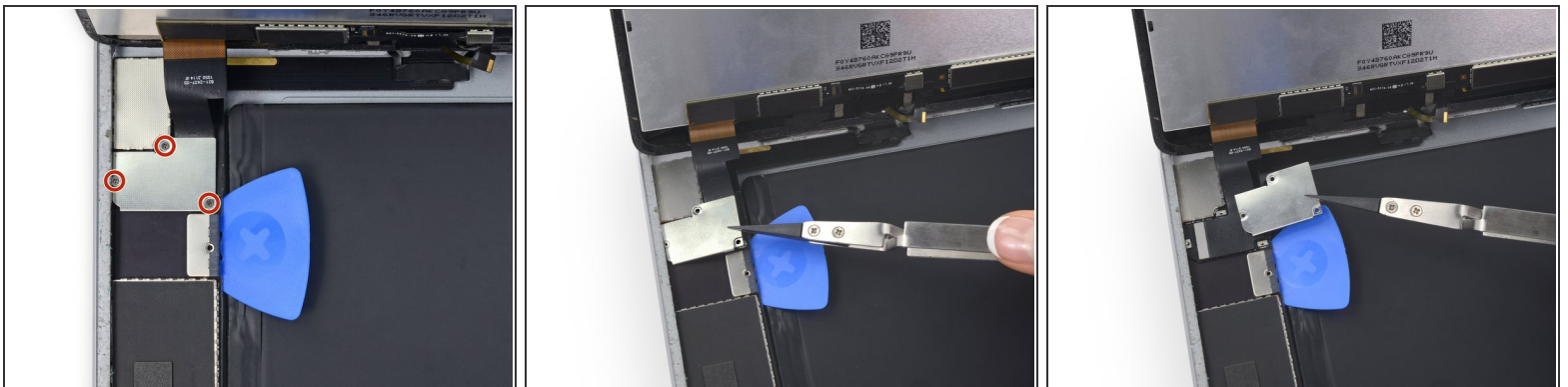
- Remove the single 1.8 mm Phillips screw securing the battery terminals to their contacts on the logic board.

Step 29



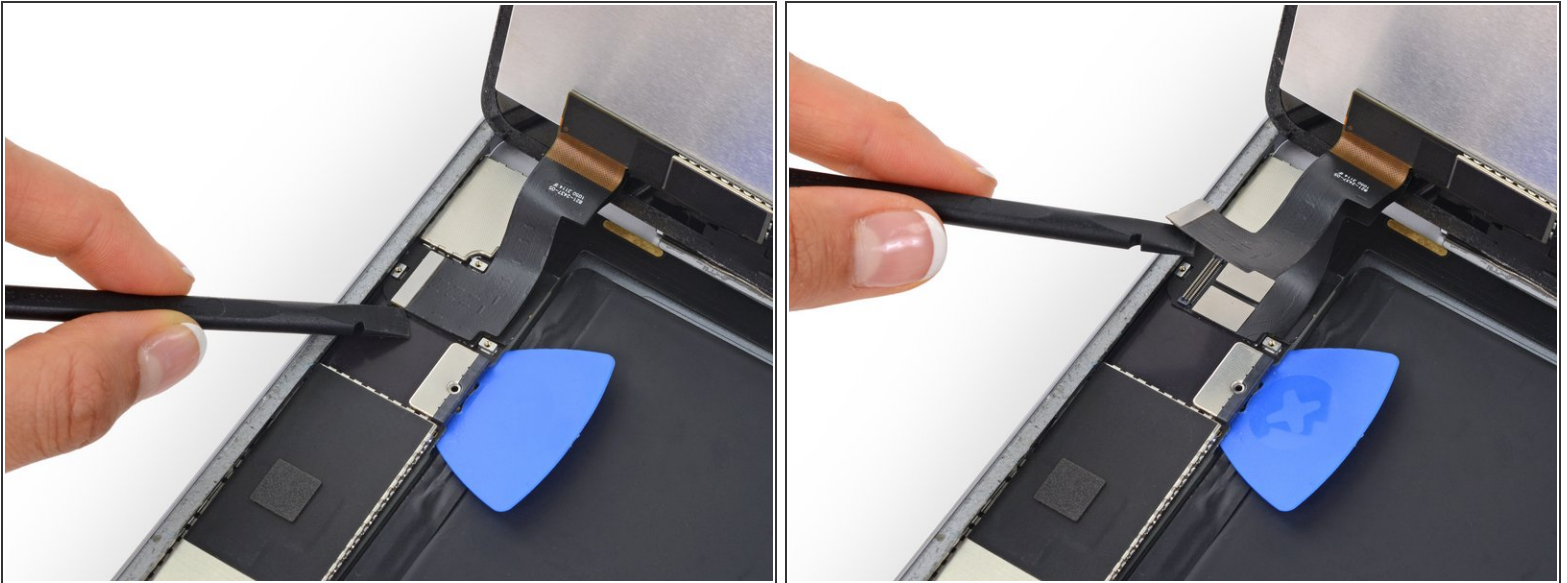
- i** To reduce the risk of a short, you can use a battery isolation pick to disconnect the battery.
- Slide a battery isolation pick underneath the battery connector area of the logic board, and leave it in place while you work.

Step 30



- Remove the three 1.3mm Phillips screws from the display cable bracket.
- Remove the bracket.

Step 31



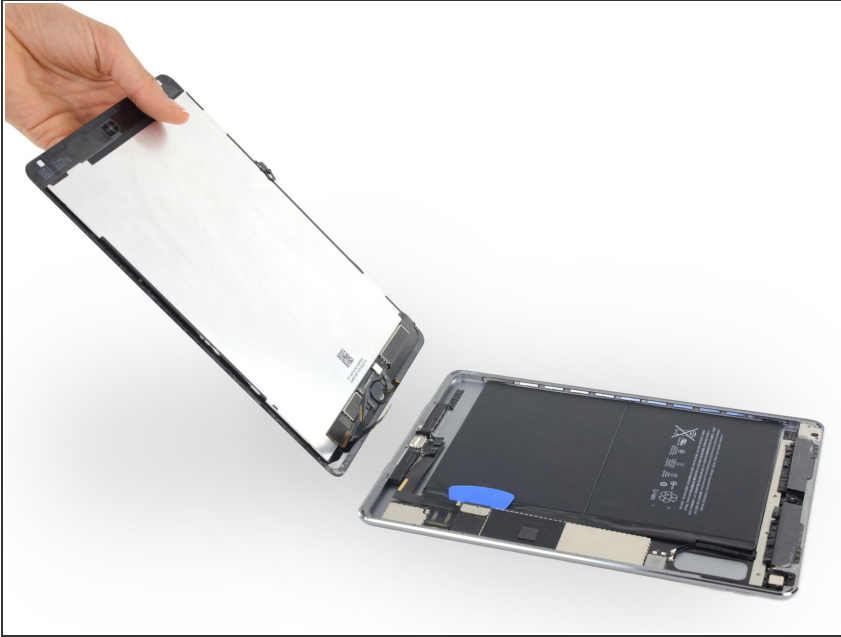
- Disconnect the display data connector from its socket on the logic board.

Step 32



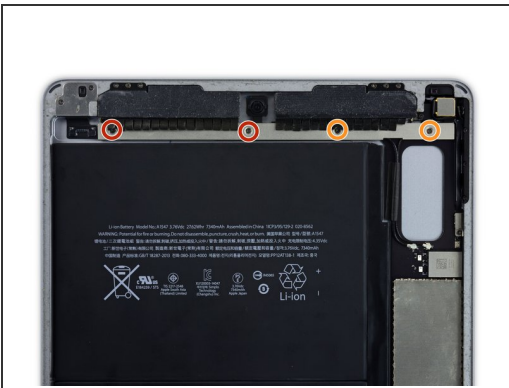
- Disconnect the two remaining digitizer cables underneath the display data cable.

Step 33



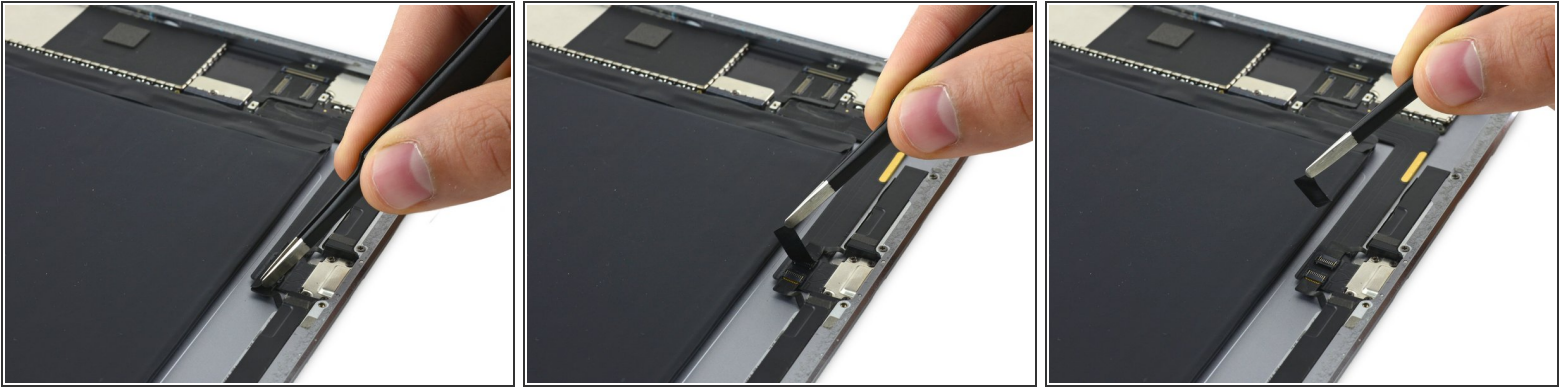
- Remove the front panel assembly from the rear case.
- ★ If you plan to reuse your display assembly, you will need to replace the display adhesive. Follow our [iPad Adhesive Guide](#) to reapply your display adhesive and reseal your device.

Step 34 — Upper Component Cable Bracket



- Remove the following four Phillips screws securing the upper component cable bracket to the tablet.
 - Two 1.6 mm
 - Two 1.3 mm
- Slide the upper component cable bracket out from under the protective flaps and remove it from the iPad.

Step 35 — Logic Board



- Remove the tape covering the two speaker ZIF connectors.

Step 36



- Use a spudger to flip up the retaining flap on the left speaker's ZIF connector.

Step 37



- Slide the left speaker cable out of its ZIF connector.

Step 38



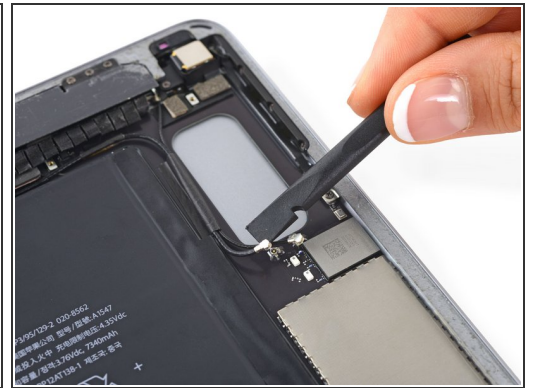
- Use a spudger to flip up the retaining flap on the right speaker's ZIF connector.

Step 39



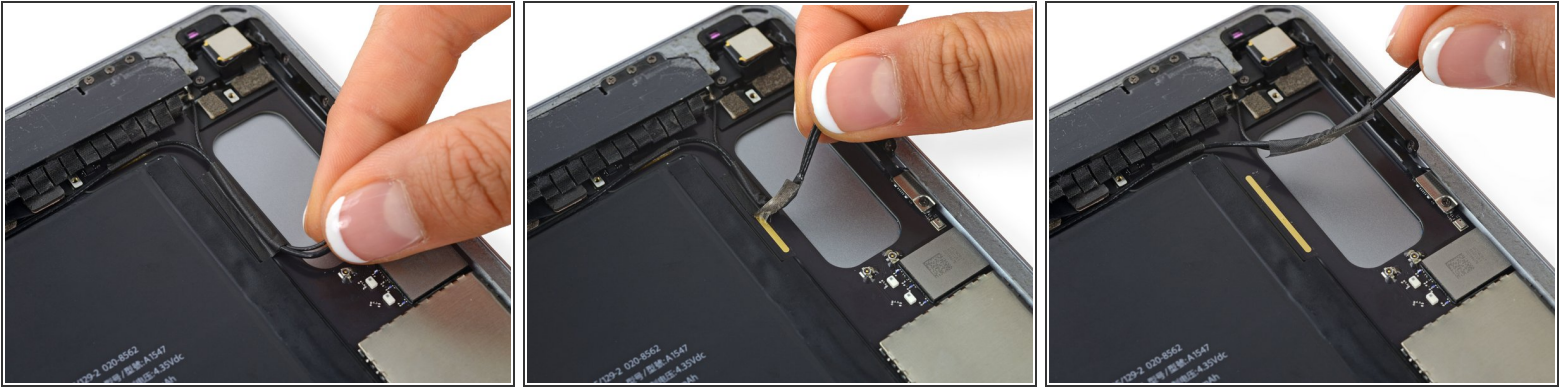
- Slide the right speaker cable out of its ZIF connector.

Step 40



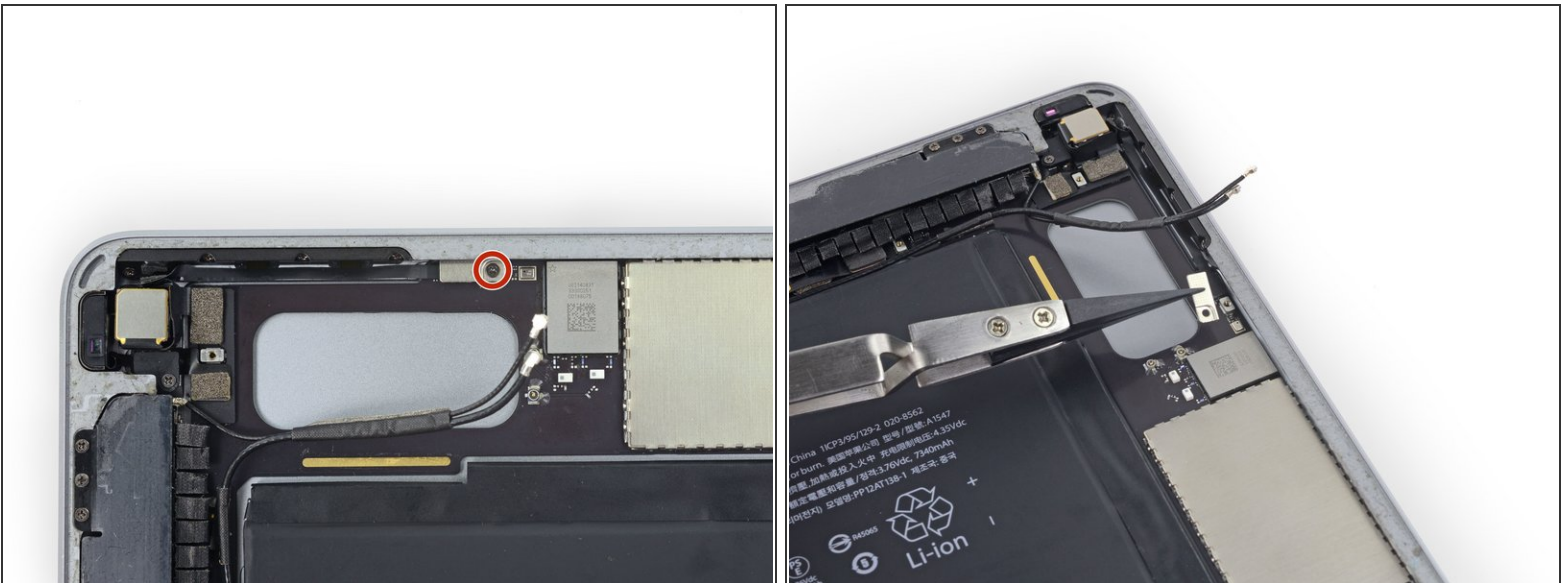
- Use a spudger to gently pry up the antenna cables from their sockets.

Step 41



- Firmly grasp the antenna cable and peel up the grounding tape attaching it to the logic board.
- ☑ Upon reassembly, it is important to reattach the antenna cable to the logic board with grounding tape properly adhered on the copper tape.

Step 42



- Remove the 1.2 mm Phillips screw securing the bracket covering the volume control cable connector.
- Remove the bracket.

Step 43



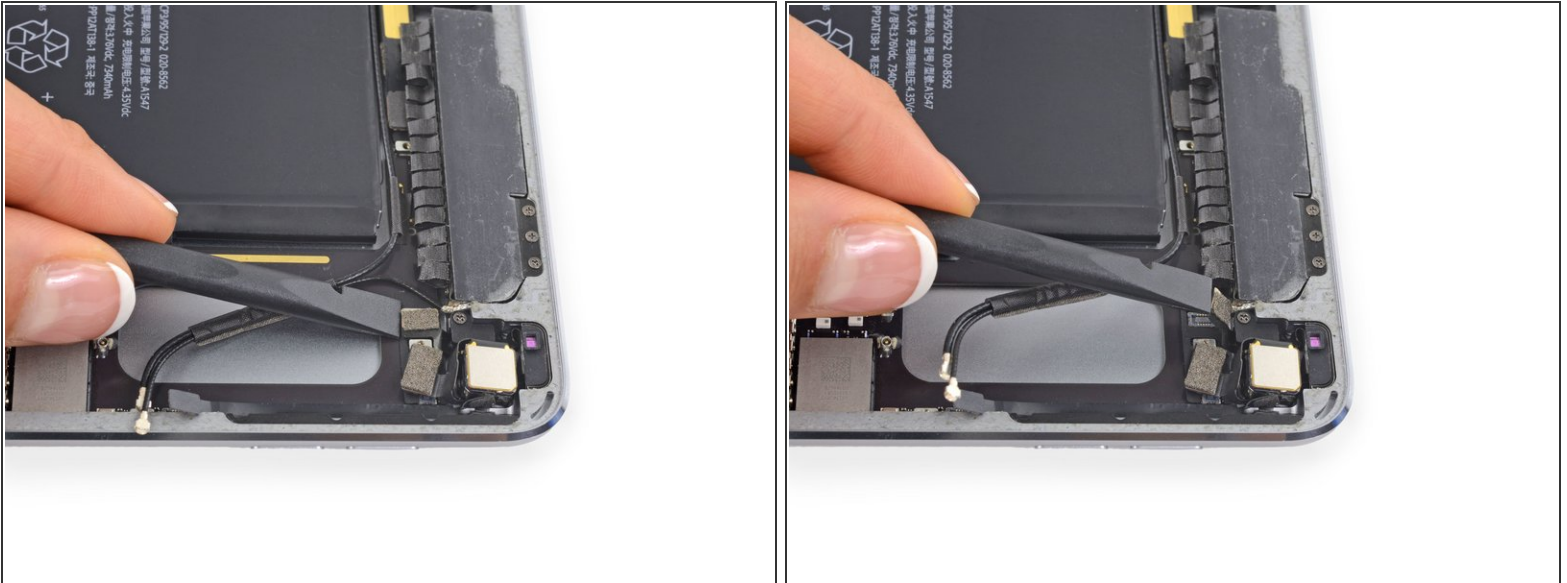
- Detach the volume button cable connector by prying it straight up from its socket.

Step 44



- Pry up the rear facing camera cable connector from its socket.

Step 45



- Pry up the home button/microphone ribbon cable connector from its socket.

Step 46



- Use the flat end of a spudger to disconnect the Facetime camera connector from its socket on the logic board.
- Pry up the adhesive attaching the Facetime camera cable to the audio jack cable underneath.
- Fold the Facetime camera cable up and out of the way.

Step 47



- Disconnect the headphone jack cable connector from its socket on the logic board.
- Pry the cable up to free it from the adhesive securing it to the rear case.
- Pull the audio jack cable out of the way of the logic board below.

Step 48



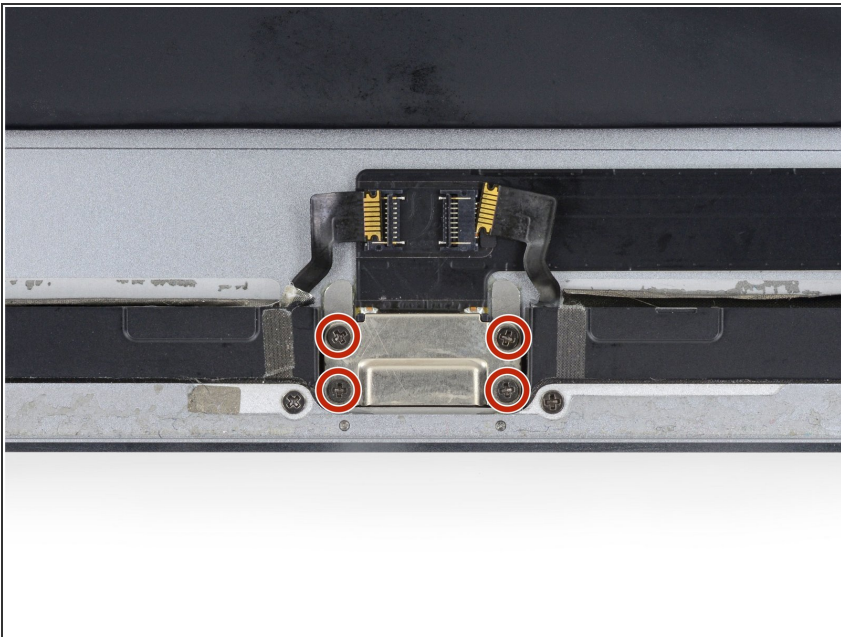
- Use tweezers to peel up the rightmost grounding tape attaching the antennas to the logic board.
- Bend the antenna wire back and out of the way of the logic board.

Step 49



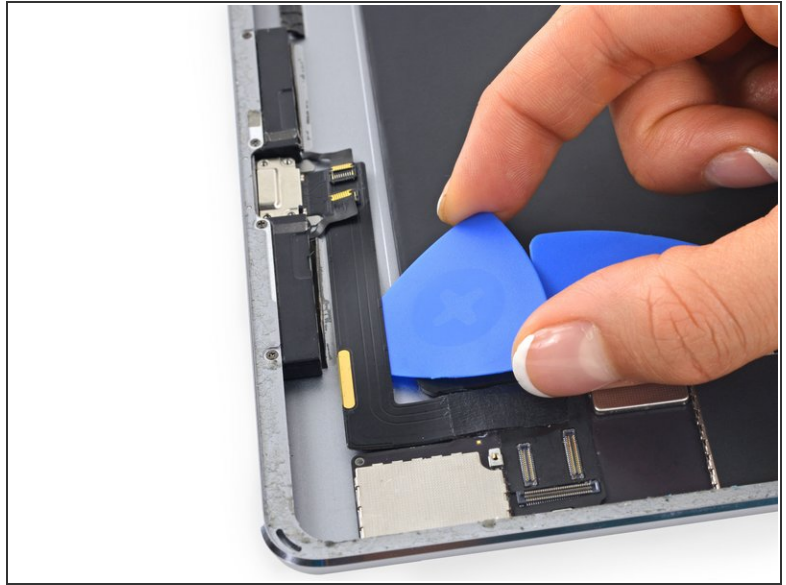
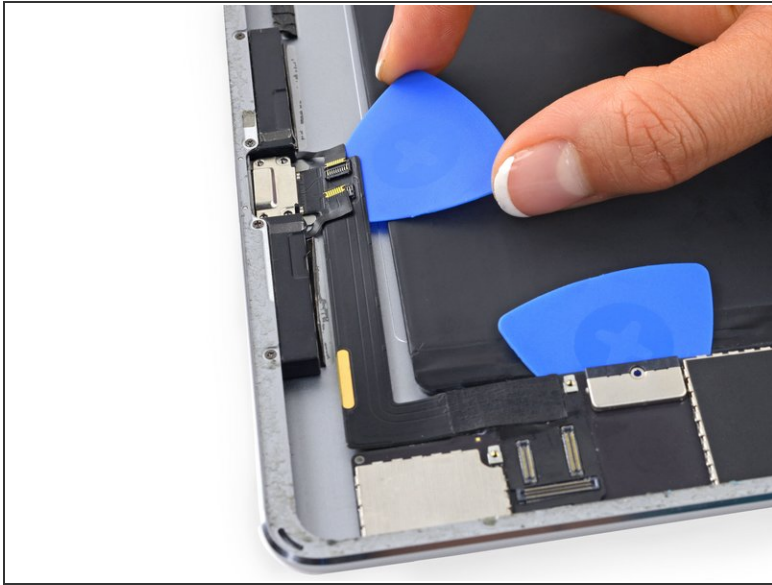
- Peel up the tape covering the top left edge of the logic board.

Step 50



- Remove the four 1.6 mm Phillips screws attaching the lightning port to the rear case.

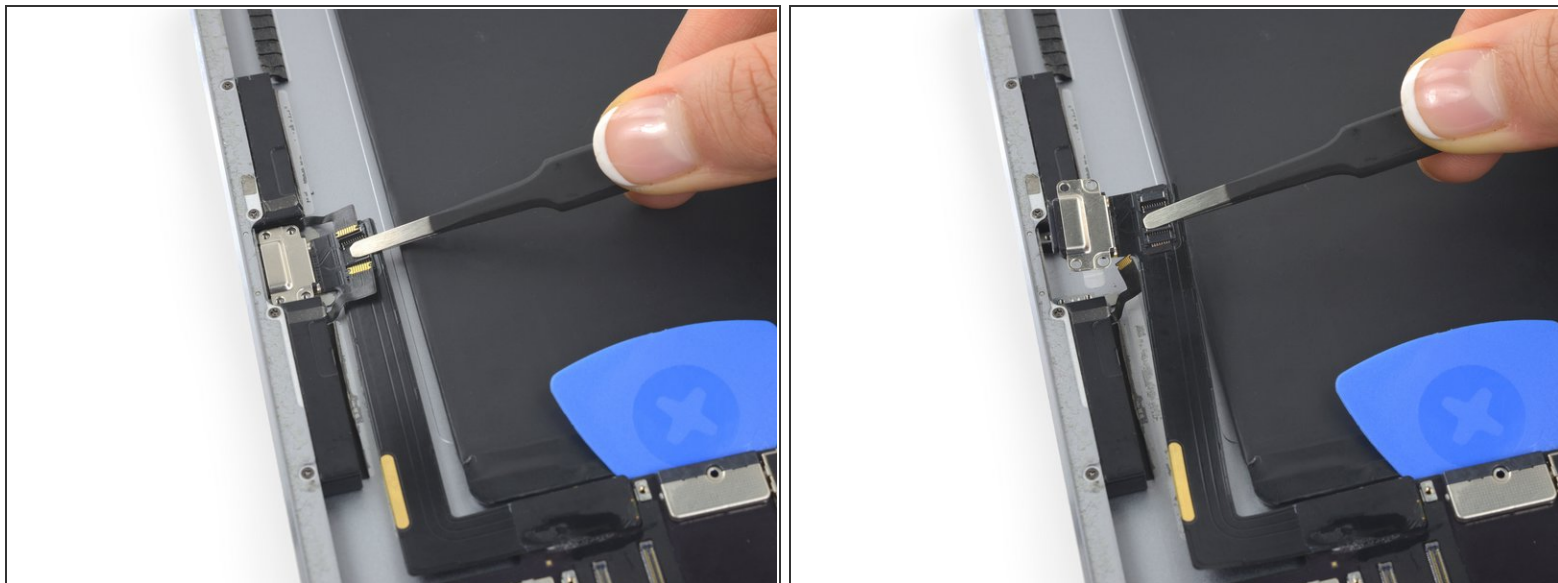
Step 51



i The Lightning connector cable is stuck to the case with some adhesive. To detach the adhesive you will be sliding an opening pick between the cable and the case. Be very careful not to cut the Lightning connector cable itself.

- Insert an opening pick underneath the Lightning cable where it meets the logic board.
- Slide the opening pick towards the bend in the cable.

Step 52



- Pull the Lightning connector straight out of its recess in the rear case.

Step 53



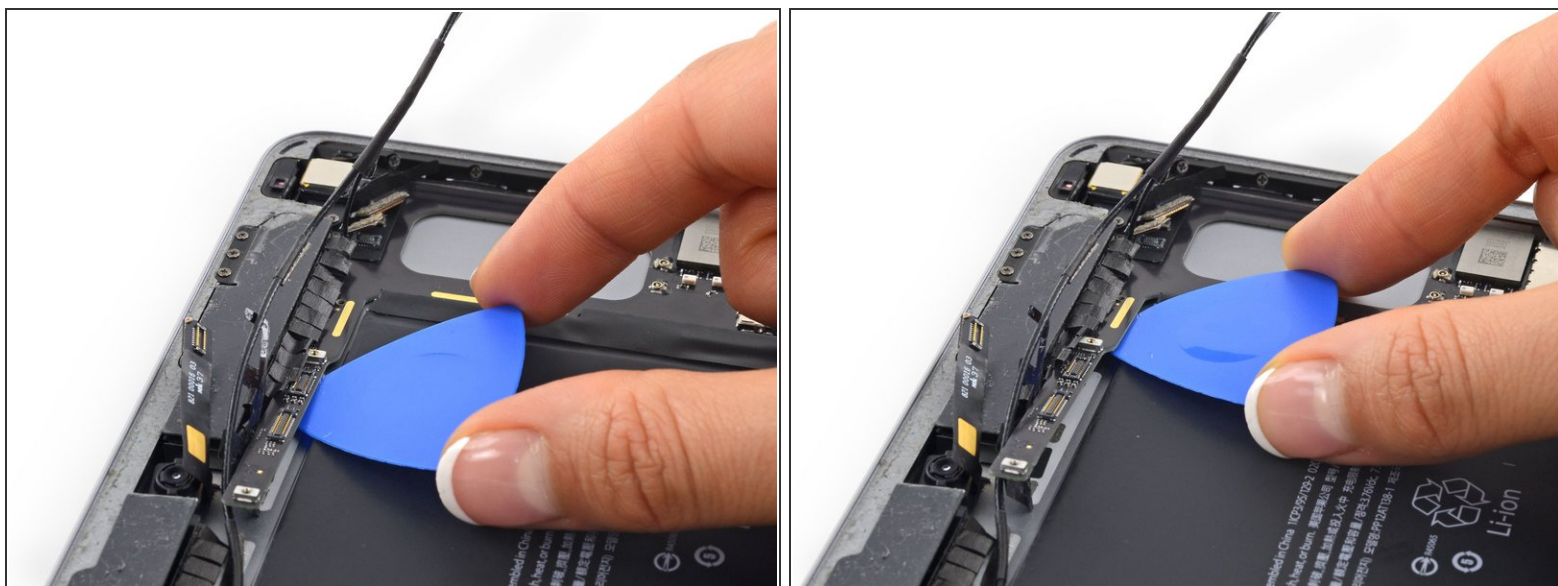
- Prepare an iOpener following the steps in the [iOpener Heating](#) Guide.
- Place the iOpener along the top of the back of the iPad for 2-3 minutes to soften the adhesive holding the logic board in place.

Step 54



- Insert an opening tool underneath the logic board below the FaceTime camera.
 - Pry the left edge of the logic board up.
- ⚠ Lift the end of the logic board slowly. If you encounter significant resistance, stop prying and reapply the iOpener.

Step 55



- Insert an opening pick underneath the portion of the logic board pried up in the previous step.
- Slide the opening pick towards the volume control buttons, and stop at the bend in the logic board.

Step 56



- Place a heated iOpener on the lefthand side of the back of the iPad for 2-3 minutes.

Step 57



- Insert a plastic opening tool underneath the logic board, inside the rectangular cut out, and gently pry the logic board up.
- Slide the opening tool down the length of the gap while continuing to pry the logic board up.

⚠ Lift the logic board slowly. If you encounter significant resistance, stop prying and reapply the iOpener.

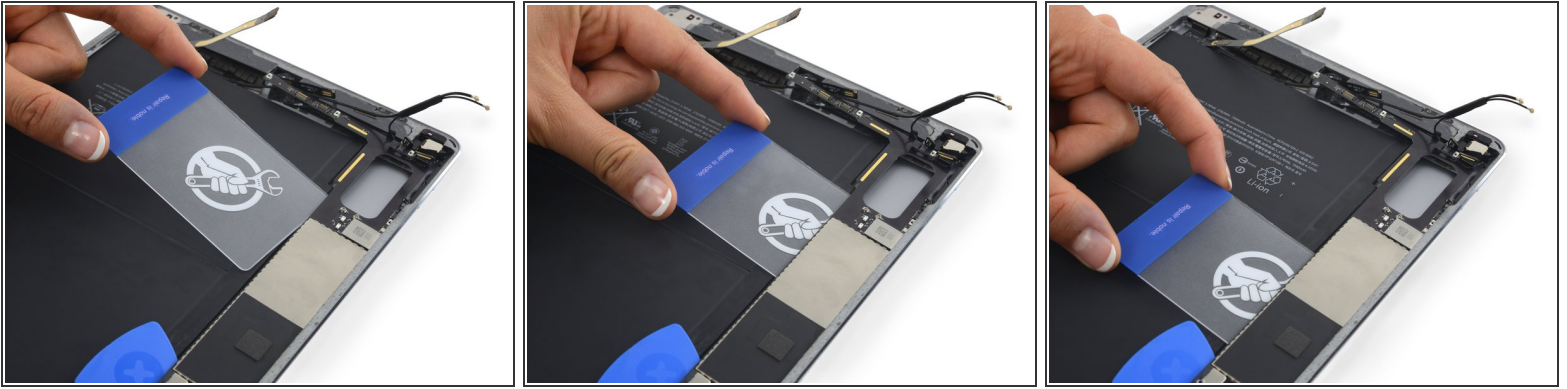
Step 58



- Insert an opening tool underneath the logic board on the other side of the rectangular cut out and pry it up.
- Slide the opening tool down the length of the gap while continuing to pry the logic board up.

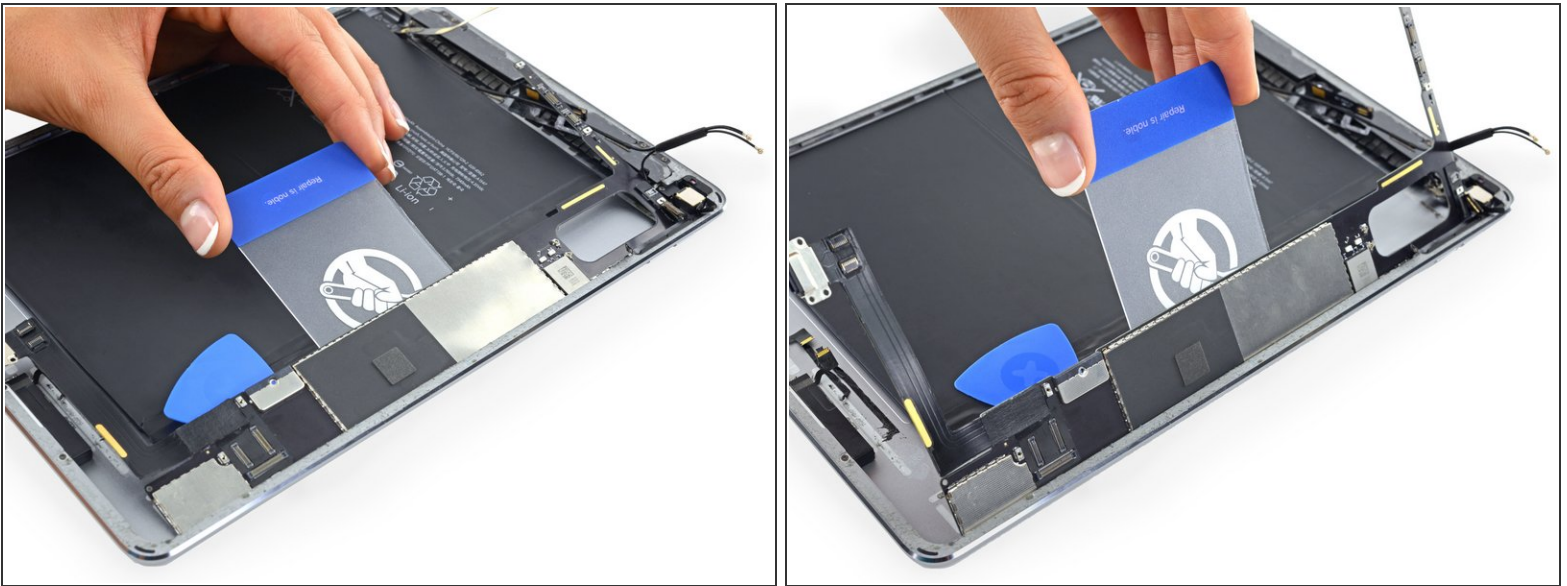
⚠ Lift the the logic board slowly. If you encounter significant resistance, stop prying and reapply the iOpener.

Step 59




- Insert a plastic card underneath the logic board.
- Slide the card down the length of the logic board to release the adhesive.

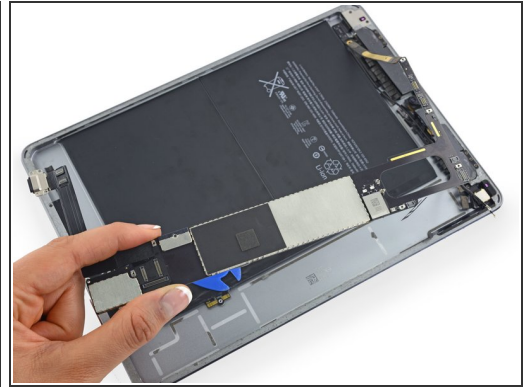
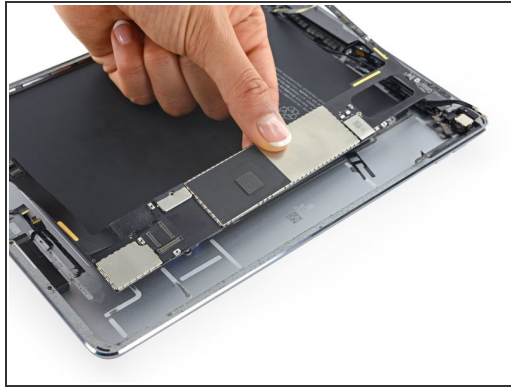
Step 60



- Slide a plastic card underneath the center of the logic board, pushing it in as far as it will go.
- Slowly swing the left edge of the logic board up, while making sure it doesn't snag against any of the disconnected cables.

 If any portion of the logic board requires excessive force to pry up, stop prying, re-apply the iOpener, and re-perform the corresponding guide steps to fully release the adhesive.

Step 61



- Remove the logic board.

To reassemble your device, follow these instructions in reverse order.