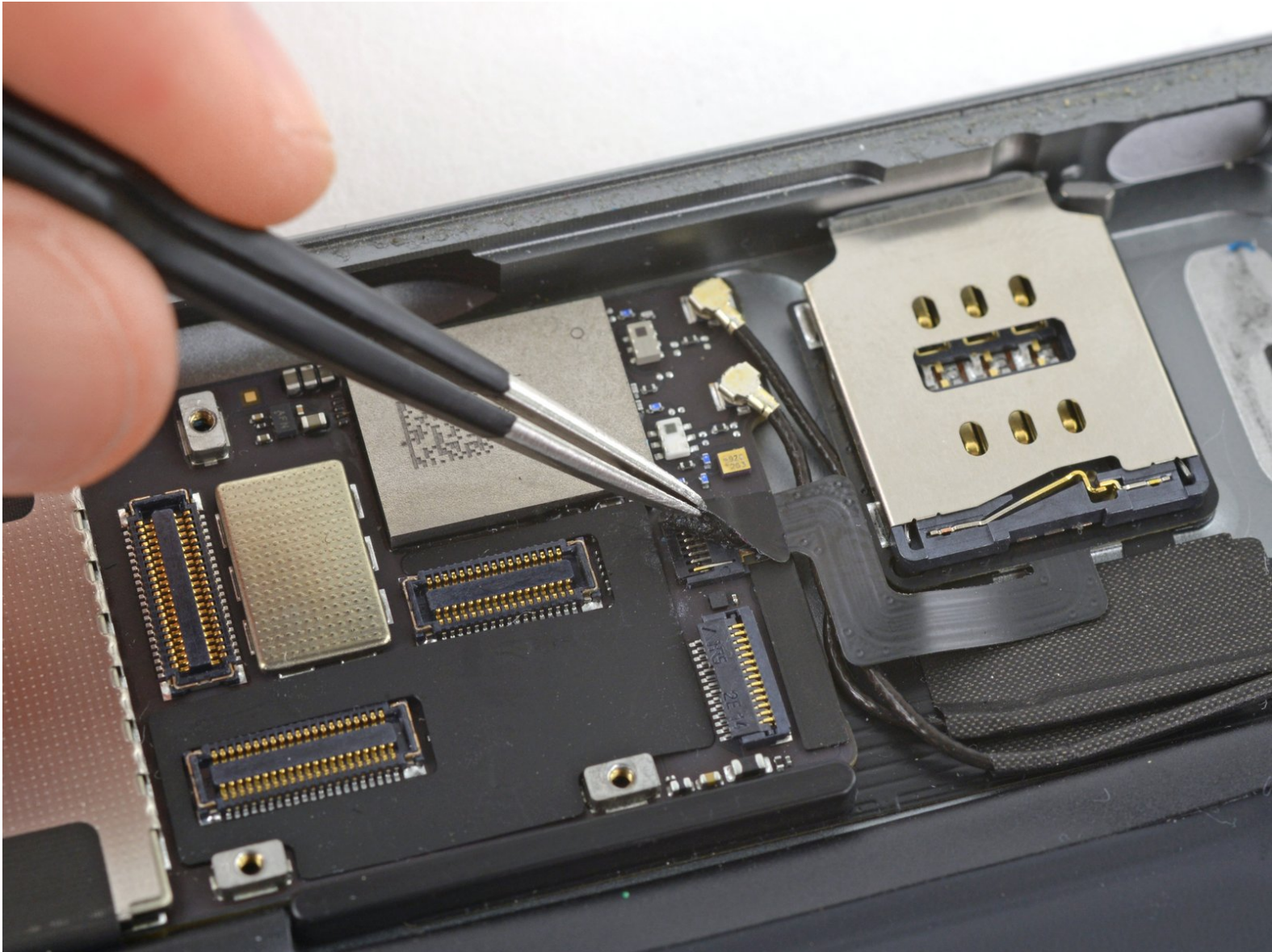




iPad Air LTE SIM Board Cable Replacement

Written By: Andrew Optimus Goldheart



INTRODUCTION

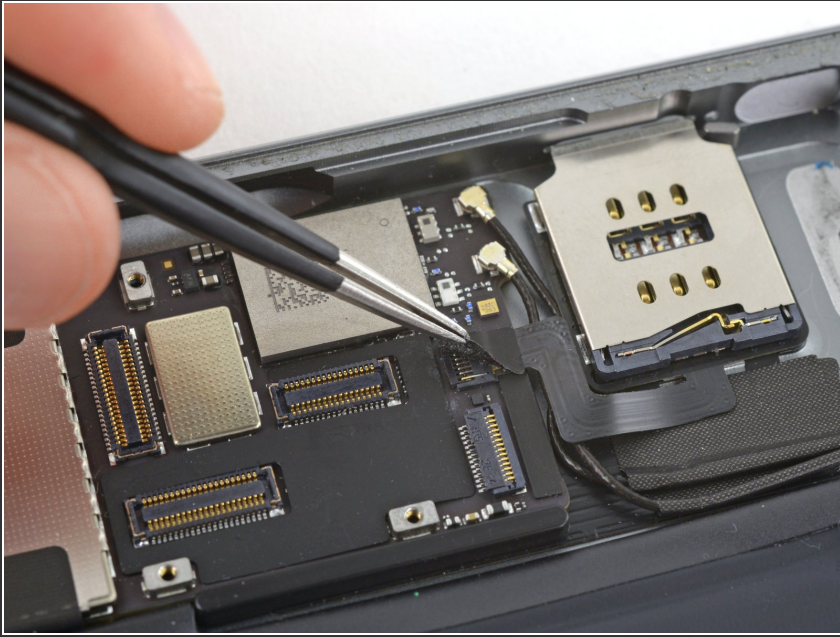
prereq for SIM board removal and maybe also logic board removal



TOOLS:

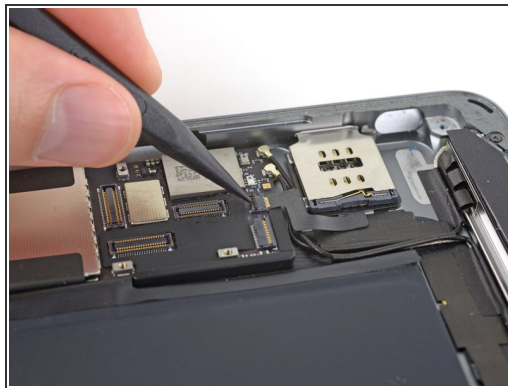
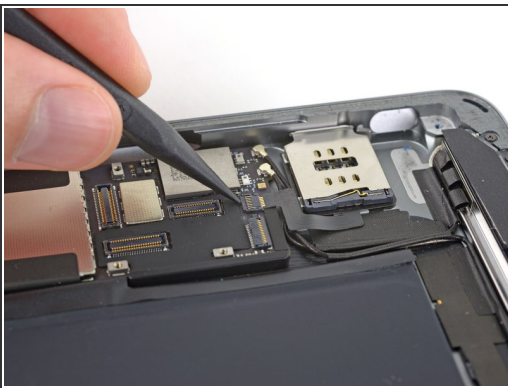
- [Spudger](#) (1)
 - [Tweezers](#) (1)
-

Step 1 — SIM Board Cable



- Use tweezers to peel and remove the piece of tape covering the SIM board cable connector on the logic board.

Step 2



- Use the pointed end of a spudger to flip up the retaining flap on the SIM board cable connector.
- Slide the SIM board cable straight out of its ZIF connector.

To reassemble your device, follow these instructions in reverse order.