



iPad Display Assembly 4 Pc. Adhesive Application

Apply display assembly adhesive to properly seal your iPad after repair.

Written By: Tarun Thiruma



INTRODUCTION

This guide shows how to apply display assembly adhesive to an opened iPad. Use it to prepare your display assembly before resealing your device during a repair.

TOOLS:

- [iFixit Opening Tools](#) (1)
 - [Tweezers](#) (1)
 - [Spudger](#) (1)
 - [Isopropyl Alcohol](#) (1)
-

Step 1 — iPad Display Assembly 4 Pc. Adhesive Application



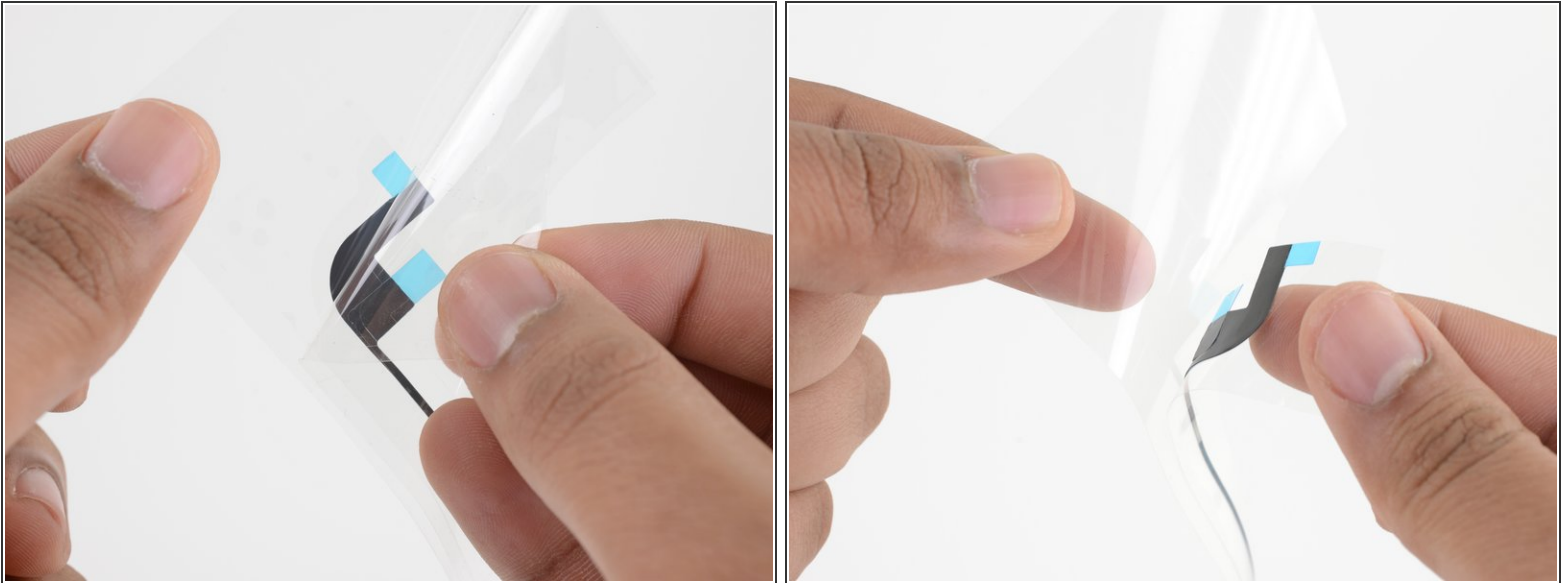
- Before installing new adhesive, thoroughly clean the display assembly and the frame of all residue.
 - Use tweezers to pull up sections of tape residue.
 - Use an opening tool or a spudger to scrape residue off. You can use high concentration (over 90%) isopropyl alcohol to soften the adhesive.
 - Remove the residue by wiping in one direction to prevent smearing.
- ⚠ Do not scrape with a metal tool, or you will scratch the display assembly's surface.

Step 2



- Lay out the replacement adhesive strips around the display assembly so that they correspond to the correct sides.

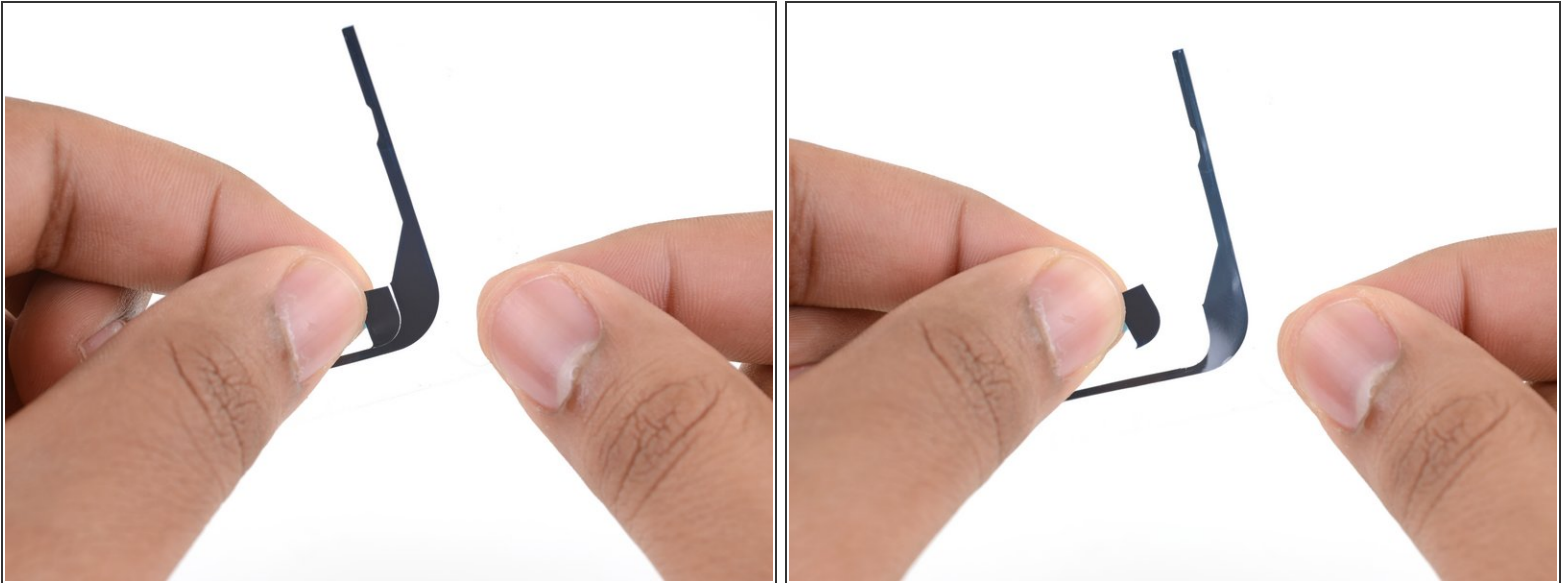
Step 3



- i** Each adhesive strip is encased in four layers of plastic—three on top and one on the bottom.

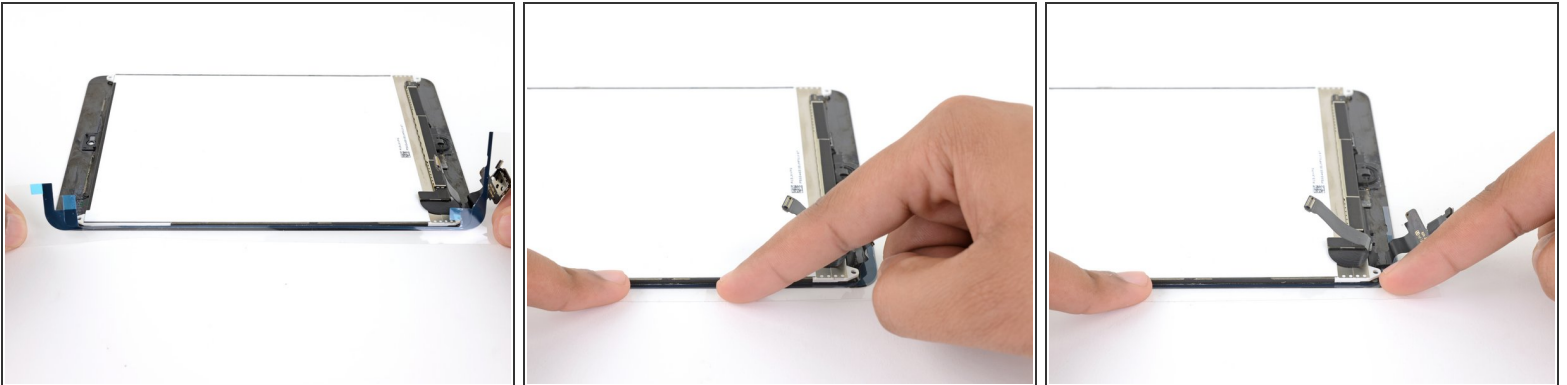
 - Peel and remove the topmost plastic cling layer from the left adhesive strip.
 - Peel and remove the bottom plastic liner from the strip.
- i** The top of the adhesive strip should still be covered by a colored plastic layer as well as a clear plastic stiffening layer.
- i** The bottom of the adhesive strip should now be exposed and sticky.

Step 4



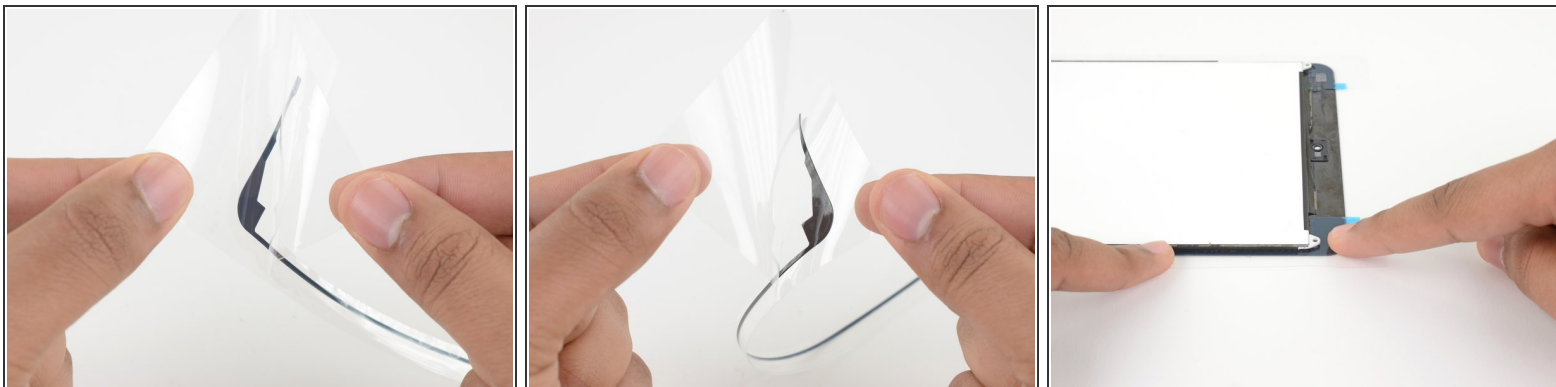
- If there are extra bits of adhesive on the strips that are not required for your particular model of iPad, remove them now.


Step 5



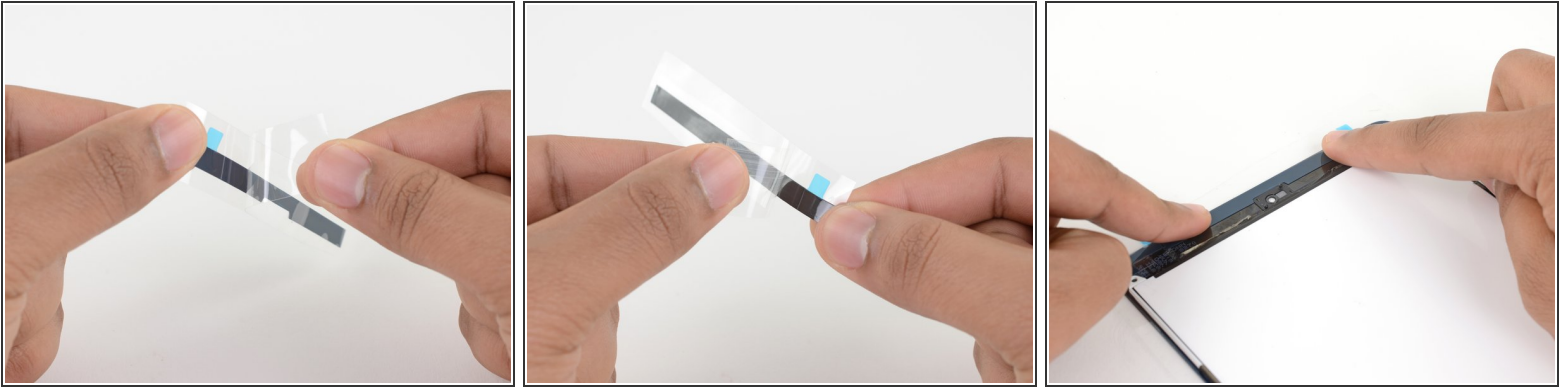
- Align the left adhesive strip to the left edge of the display assembly.
- Beginning from one corner, lay the adhesive strip onto the display assembly and press the strip into place.
- If necessary, [use a spudger](#) to press down the narrow parts of the adhesive strip.


Step 6



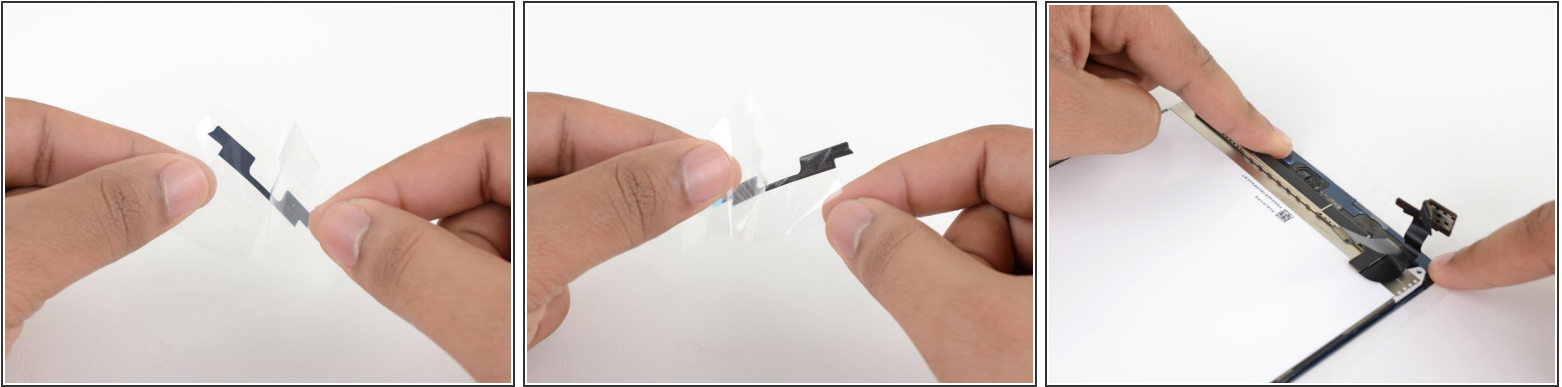
-  Repeat the process with the right adhesive strip.
- Peel and remove the topmost cling layer from the strip.
 - Peel and remove the bottom liner layer from the strip.
 - Align the adhesive strip to the right edge of the display assembly.
 - Starting from one corner, lay the adhesive strip onto the display assembly and press in place.


Step 7



-  Repeat the process for the top adhesive strip.
- Peel and remove the topmost cling layer from the strip.
 - Peel and remove the bottom liner from the strip.
 - Align the strip to the top of the display assembly such that the straight adhesive line bridges the gap between the left and right strips.
 - Press the strip in place.

Step 8



 Repeat the process for the bottom adhesive strip.

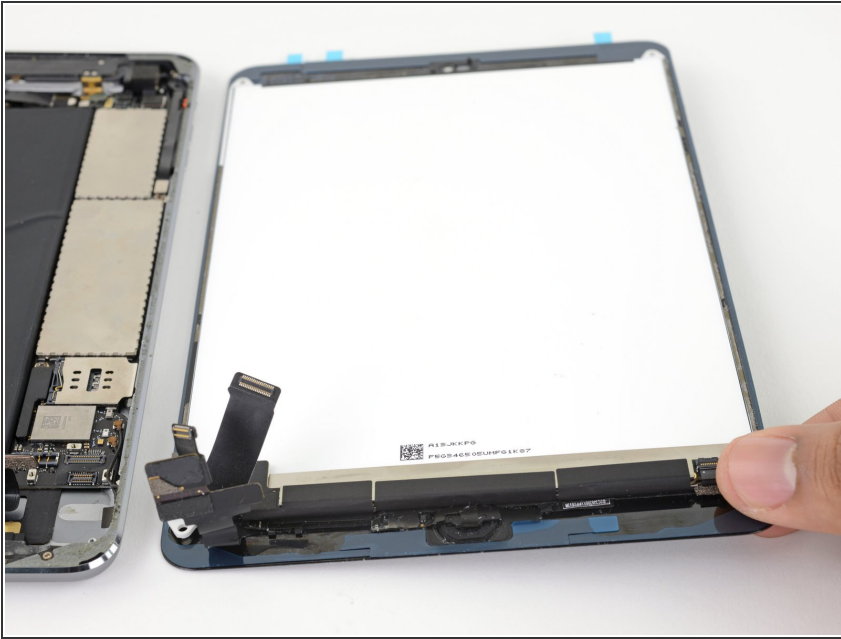
- Peel and remove the topmost cling layer from the strip.
- Peel and remove the bottom liner from the strip.
- Align the strip to the bottom of the display assembly such that the straight adhesive line bridges the gap between the left and right strips.
- Press the strip in place.

Step 9



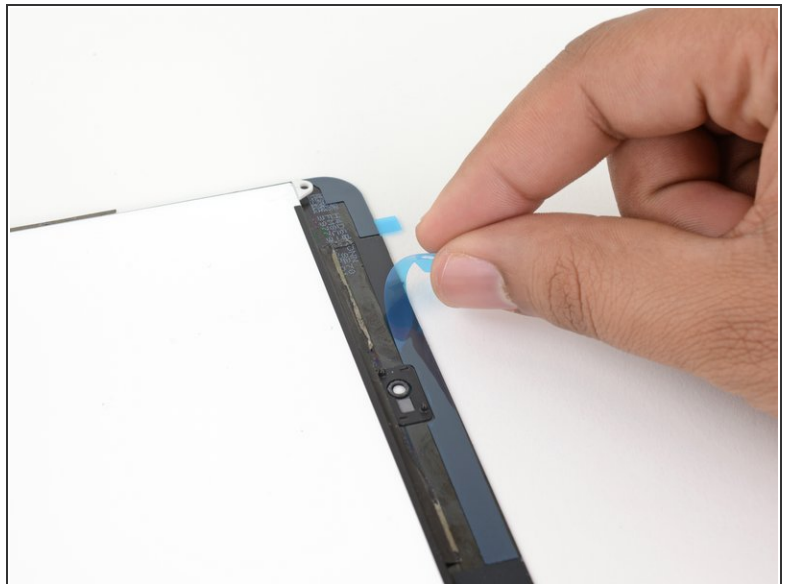
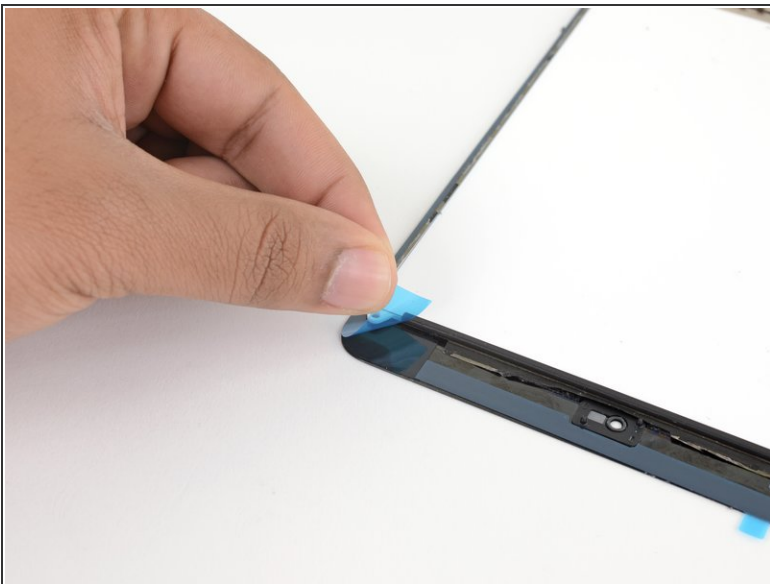
- Peel and remove the clear plastic stiffening layer from all four adhesive strip sections.

Step 10



- Continue with the reassembly process until you are ready to seal the device.

Step 11



- Peel and remove the four colored plastic liners to expose the adhesive.
- Close the device and place something heavy, such as a stack of large books, on top for thirty minutes to help the new adhesive bond.

Repair didn't go as planned? Check out our [Answers Community](#) for troubleshooting help.