



# iPad Mini 2 LTE Digitizer Replacement

prereq to disconnect the digitizer

Written By: Sam Goldheart



---

# INTRODUCTION

prereq to disconnect the digitizer



## TOOLS:

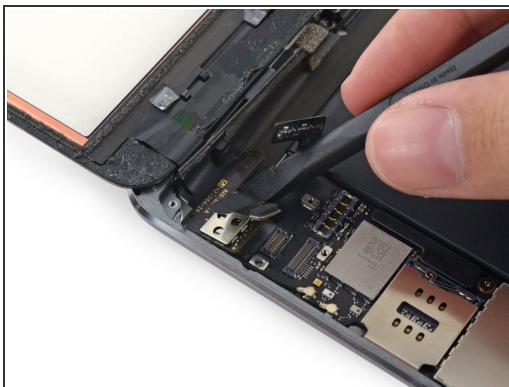
- [Spudger](#) (1)
-

## Step 1 — Digitizer



- Use the flat end of a spudger to lift the digitizer cable connector straight up off of its socket.

## Step 2



- Slide the spudger under the battery side of the digitizer board to begin separating it from the rear case.
- Lift the digitizer board up to free the last of the adhesive.

### Step 3



- Lift and remove the front panel from the iPad.

To reassemble your device, follow these instructions in reverse order.